

# PermaGreen

2014 PermaGreen™ Triumph Spreader Sprayer: the machine you'll trust your employees to drive!



- Triumph's full-articulation and long wheel base won't beat up employees.
- Fingertip location of main controls help the operator keep both hands on the handlebars.
- Triumph is intuitive to operate with a short learning curve.
- No need to take chances riding difficult terrain. Just drop the handlebars and walk.

**PermaGreen™ features that help reduce employee confusion and costly mistakes:**

- No guessing if the spray matches the ground speed. The Triumph has two factory-set working speeds (3.5 and 5.0 mph) and matching factory-set spray widths for each speed.
- Our center-mounted, low-drift nozzle actually sprays wider than some booms!

Triumph spreads and sprays up to an acre per fill and in as little as 15 minutes, and comes closest to the goal of one machine, all properties, every day. Why trust your future to anything else?

One fully-loaded test drive is worth a thousand words! Call or visit us online for a demo location near you and a chance to win your own 2014 Triumph\*.

*\*Details, limitations and exclusions available online.*

**New 2014 Triumph features that earn your trust:**

**O**ur improved ExtraEasy power steering system dramatically reduces the muscle power your employee needs to control the machine in tight, high-speed maneuvers and tough terrain. You'll be impressed.

**New Extended Warranties\* including corrosion coverage:**

- 60-day buyback Guarantee. You won't be stuck with a machine you don't want.
- 15-month PermaGreen™ Warranty includes engine, transaxle, and gearbox corrosion protection.
- 30-month frame and sully Warranty covers cracks and weld failures.
- Guaranteed same-day parts shipping. Parts orders received by 2 p.m. CT ship the same day, or the shipping is FREE!

**Tried and true Triumph hillside safety features:**

- The low-riding Triumph hopper and tanks are no more than 36 inches high for a truly low center-of-gravity with good weight distribution and better stability on slopes.
- Front-wheel-drive steering and all-wheel brakes help the operator keep Triumph under control and all four wheels on the ground regardless of the direction of travel on a hill.

permagreen



# Polaris®

## BRUTUS™



**B**RUTUS, a purpose-built commercial vehicle line from Polaris, is the first side-by-side utility vehicle in the market to deliver front-end power take-off (PTO) capability. Comprised of four models, the line was built to provide new levels of versatility and productivity to commercial users.

The full BRUTUS line includes standard features that are ideal for commercial applications. A 24-horsepower diesel engine with hydrostatic transmission, On-Demand True All-Wheel Drive, and treadle pedal for seamless — and shiftless — forward and reverse travel, provide operators with the power and functionality necessary on the jobsite.

BRUTUS vehicles can be paired with a complete line of purpose-built attachments that when used in conjunction, allows users to execute six diverse application with just one machine.

The BRUTUS HD vehicle is equipped to operate three hydraulically controlled attachments including a 69-inch snow blade, 450 pound capacity adjustable width pallet forks and a 62-inch materials bucket with 500-pound capacity.

The BRUTUS HDPTO model is capable of operating both the hydraulically-powered attachments as well as three PTO-powered attachments including a 70-inch angle broom, a snow blower with a 62-inch cutting width and a finishing mower

with a 66-inch cutting width.

As the first side-by-side utility vehicle line to use a multi-link coil over De Dion rear suspension, BRUTUS delivers a superior ride quality, minimizes suspension sag when the 1,250-pound capacity rear cargo box is fully loaded and maintains class-leading ground clearance when trailering with its 2,000-pound towing capacity.

Select models feature fully enclosed, factory-installed cabs with in-dash heat, defrost and air conditioning, keeping operators productive and comfortable no matter what the climate.

All models feature Polaris' exclusive Lock & Ride® cargo system, with a full line of cab, storage and vehicle protection accessories also available to meet each user's unique needs. BRUTUS vehicles come with a 12-month standard warranty.

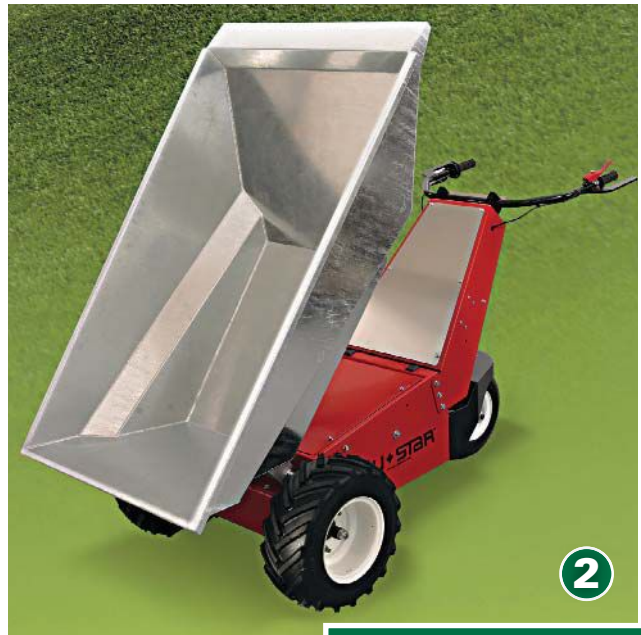
### About our products:

- 1.** Four-model BRUTUS commercial utility vehicle line.
- 2.** BRUTUS HD with optional hydraulically controlled materials bucket attachment.
- 3.** BRUTUS HDPTO with optional PTO-powered finishing mower attachment.



# Power Pusher

E-750 Electric Wheelbarrow



The Power Pusher **E-750 Electric Wheelbarrow** is designed to safely, easily transport loads weighing up to 750 pounds. Available in stainless steel or heavy-duty, high-density plastic, the wheelbarrow is designed to improve safety and efficiency by eliminating ergonomic challenges and unnecessary production delays that are associated with manually operated wheelbarrows. Designed to minimize strain, the E-750 is ergonomic and provides push-button unloading capability.

## Features and Benefits

- Available with a heavy-duty, high-density plastic tub or a stainless steel tub to handle diverse material-handling applications
- The motor, powered by a rechargeable 24v battery, can run five-miles on one charge
- Hauling up to 750 pounds at 3 miles per hour increases production speed and efficiency



## About our products:

1. The E-750 Electric Wheelbarrow available in heavy-duty, high-density plastic
2. The E-750 Electric Wheelbarrow available in stainless steel

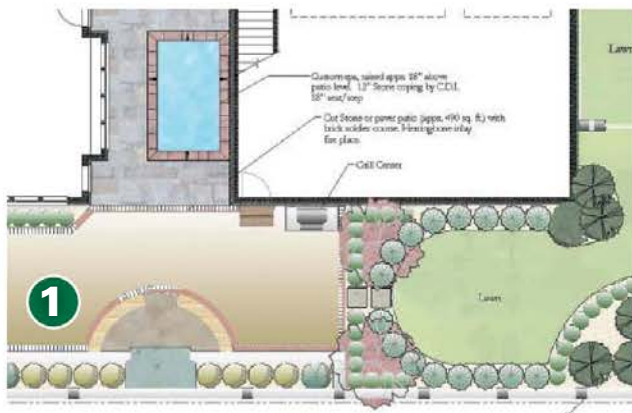
- A quiet motor is suitable for indoor use
- Bed capacity of 9 cubic feet allows the hauling of large loads in one pass
- Power dump feature allows users to eject materials with the push of a button on the wheelbarrow handle
- Durable, reliable construction is suitable for rocks, bricks, sand and concrete, fertilizer, sod, soil, mulch and many other materials

## About NuStar Inc.:

NuStar Inc. is a global manufacturer of engineered solutions for material handling needs, with facilities in the US and UK. The company operates out of Shakopee, Minn., and, to date, its Power Pusher® division has sold more than 26,000 units worldwide. Years of experience as a leading designer, manufacturer and innovator in the industry have given us the competitive edge in providing reliable and cost-effective load-moving solutions that deliver tangible productivity and safety benefits in a wide variety of applications.

# PRO Landscape by Drafix Software

Increase sales and improve design quality using PRO Landscape design software.



**P**RO Landscape is the most complete, easiest-to-learn and easiest-to-use professional landscape design software package you can buy. The software creates breathtaking visual landscape designs, 2D site plans, 3D representations and accurate estimates. PRO Landscape makes it fast and easy to plan, bid and sell your landscape designs.

► **Photo Imaging:** Use PRO Landscape's photo imaging to create a realistic visual representation of what your proposed landscape design will look like. Simply start with a digital photograph of your customer's house and then you can easily drag-and-drop your landscape items right onto the photograph. PRO Landscape's library contains more than 11,000 of the industry's highest quality images of plants, trees, shrubs, grass, mulch, hardscapes, water features, night and holiday lighting, or easily add your own. Easily create visual designs that your customers can understand.

► **PRO Landscape Companion for iPad/Android:** Go mobile with the first professional landscape design solution for your iPad or Android. PRO Landscape Companion allows you to easily create and edit designs right in the field using your



tablet. Impress your customers and outpace your competition by designing, presenting and closing the sale right on the spot.

► **Easy-to-Use CAD:** PRO Landscape allows you to quickly create scaled 2D-site plans that accurately represent your proposed design elements including plantings, hardscapes and irrigation systems. PRO Landscape keeps track of all materials, calculates hardscape areas and material volume of items such as rock or mulch. With a single click you can create a title block, callouts or a plant legend.

► **Customer Proposals:** PRO Landscape generates an accurate bid directly from your photo imaging or CAD files using your prices and tax rate. Once you create your estimate, put together a professional-looking customer presentation including the cover sheet, estimate, material list and plant information with pictures in just seconds!

► **Free Technical Support:** PRO Landscape comes with a 60-day money back guarantee, tutorial/training DVD and free, lifetime technical support.

## About our products:

1. Create accurate site plans with CAD software created specifically for landscape design.
2. Create, present and sell your designs right on your tablet.
3. Visually communicate design ideas to your customers.

# Progressive



## Should I keep a Comprehensive Only Policy in the offseason?

At Progressive, we'll work with you to find a policy that's right for your business. Just like you'd go to a doctor for medical advice, your agent or company should be able to help you find the right policy for your business. One question we hear often is, "Is a Comprehensive Only policy right for me?"

Sometimes we hear from landscapers like you about whether you need coverage during the off-season since you won't need your vehicles again until next spring. You might think: It's better to cancel the vehicle's insurance during the winter months to save some money, right?

Actually, a lot can happen to a vehicle in storage—even if it's covered in a garage. Your work truck could be stolen, vandalized or even slightly damaged, and those damages could end up costing more than you might expect. It's in your best interest to protect all work-related vehicles, regardless of whether they are in use or not.

Talk to your agent to identify which coverage options are right for you and your landscaping business throughout the year. Instead of eliminating coverage altogether, seasonal businesses can simply switch over to a Comprehensive Only policy. This provides basic protection

against incidents like theft, vandalism, falling tree branches and windstorms year round.

Another reason to maintain a Comprehensive Only policy is that most insurance companies want to see proof of continuous coverage when you purchase a policy. So, when you drop insurance completely during the off-season, it may seem like you're saving money in the short term, but when spring rolls around you'll end up paying more to get the coverage you need. Seasonal businesses can save money by maintaining continuous coverage throughout the off-season, and it also eliminates the hassle of reinstating your policy each year.

Whether you're talking to Progressive or your agent, we're here to help you with questions about your policy. It doesn't matter if you need to cover one truck, multiple vehicles or all of your mowers and equipment – there's a policy that will fit your needs. With more than four decades of experience in the commercial auto industry, we know that your time is money, so we work to get you back on the road fast.

**PROGRESSIVE**<sup>®</sup>  
COMMERCIAL



# Propane Education & Research Council



The Propane Mower Incentive Program offered by the Propane Education & Research Council (PERC) is a research and demonstration program that provides incentives to landscape contractors for providing feedback and documenting performance data about their real-world experiences mowing with propane. PERC uses this data in the research, development, and demonstration of new



propane-fueled lawn care equipment.

New mower purchases and new mowers converted to run on propane are eligible for the incentive. By participating, landscape contractors can receive \$1,000 on eligible new mowers and \$500 on converted mowers. This incentive can be combined with other manufacturer and state-level propane gas association rebates.

To qualify for the mower incentive on conversions, the equipment must be a commercial mower operated for less than 10 hours. It also must be a dedicated propane-fueled mower and the conversion kit must meet Environmental Protection Agency or California Air Resources Board requirements. The conversion cannot void the original equipment manufacturer's warranty.

While participating in this program, landscape contractors can benefit not only from the monetary incentive, but also from the overall benefits of propane. Fuel costs have an enormous impact on landscape contractors' profitability, and the price of propane is competitive compared with other energy sources. And since propane



is an approved alternative fuel, there's less downtime as a result of ozone action days.

Landscape contractors who have switched to propane-fueled commercial mowers have seen substantial results with cost and time savings. Denison Landscaping and Nursery, a large landscape contractor based in Fort Washington, Md., knows firsthand about these benefits.

Vice President Elbert Monroe said the company saves an average of \$20 to \$30 daily for each propane-fueled 72-inch riding lawnmower. Monroe also said that his customers support Denison's use of propane-fueled lawn equipment.

"It's environmentally friendly," he said. "Customers like it that we're using a clean fuel."

For more information about the Propane Mower Incentive Program and how propane can benefit your business, visit [www.poweredbypropane.org](http://www.poweredbypropane.org).



1140 Connecticut Ave. NW, Suite 1075, Washinton DC 20036 | Phone: 202-452-8975  
 Fax: 202-452-9054 | [propanecouncil.org](http://propanecouncil.org)

# Quali-Pro

Trends in the lawn care market



## What pests are lawn care operators (LCOs) most concerned with these days?

In the past, LCOs could plan to deal with the same pests year after year. You could almost count on it. Today we're all dealing with pests that may not have been a problem before. In my area we have red imported fire ants that were certainly less of a problem 10 to 12 years ago. I have heard entomologists claim we have more pests because we're now using insecticides that are safer for the environment, so these insecticides do not offer the broad-spectrum insect control like the old chemistry (organic phosphates or carbamates, etc.).



**JERRY CORBETT**  
TECHNICAL SERVICES MANAGER,  
QUALI-PRO

Today we're treating for more specific insect situations. Now when we're treating fire ants using fipronil we may control a couple of other insects like mole crickets, but we don't control everything.

Because of the increase with insect pest pressures and the limited insect spectrum of our insecticides, I predict that combination products will be more handy in the future.

## What's new with Quali-Pro?

This has been an exciting year. Quali-Pro has launched many new and innovative products, such as **ABBA CS**, a new generation of Abamectin boasting a highly efficient technique for encapsulation with CapVantage Technology.

Three newly added herbicides include:

- **2DQ**, a three-way herbicide with 2,4-D, Dicamba and Quinclorac to provide superior control of annual and perennial broadleaf weeds.
- **NEGATE 37WG**, a unique, dual-powered, post-emergent Sulfonylurea herbicide with synergistic grass and broadleaf weed control in established warm season turfgrass, and
- **Quinclorac 1.5L**, a liquid herbicide that provides unsurpassed crabgrass control.

We also recently launched two new fungicides: **QUALI-PHITE F**, a systemic fungicide, and **ENCLAVE**, a flowable fungicide for horticultural disease control. ENCLAVE pioneers the first fungicide, with Quad-Control-Technology for control of many foliar, stem and below-ground diseases on a wide range of horticultural plants grown or maintained under a variety of conditions.

Quali-Pro delivers more value for your dollar and a product that guarantees satisfaction. Our innovative formulations are university-tested with proven results, designed to help you prevent and eliminate diseases, weeds and pests. By creating new and unique products, we help keep golf courses, lawns, landscapes, nurseries, greenhouses and other general maintenance areas looking and playing their best. We're making "basic" even "better," just what you'd expect from Quali-Pro, and you Know The Sign.

**QUALI-PRO**

Quality Turf & Ornamental Products



# R&K Pump & Equipment



**R**&K Pump & Equipment manufactures sprayers for the lawn care, pest control, aquatics, nursery and agricultural industries. With 30 years of experience in the spray equipment industry, we produce more than 50 models with various pump, engine and hose reel options to meet every spraying need. Our exclusive all-welded aircraft-grade aluminum frames allow us to produce a high-strength, lightweight piece of equipment that will never rust and never needs painting.

## Manufacturing facility:

Located in Pompano Beach, FL, since 1980, R&K is proud to be an American manufacturer. All welding, fabrication and assembly is completed in-house to ensure quality control and on-time deliveries. Our shops are organized into work cells that can easily be adjusted to build a custom unit or 100 production units just as efficiently. We manufacture for some of the largest fleets in the lawn care and pest control industries and provide maintenance for more than 1,500 commercial spray units.

## Major product lines:

- **Lawn/Turf Care Trucks.** Truck-mounted spray systems are available from 200 to 1,600 gallons. We offer complete turnkey body and chassis combinations, or we can custom build on your existing vehicle.
- **Pro-Series Skid Mounted Units.** Skid units range in size from 50 to 600 gallons with poly or fiberglass tanks and more than a dozen pump and engine combinations. These units offer exceptional service at an economic price.
- **Portable Commercial Sprayers.** Our 50-, 100- and 200-gallon 4-wheel carts and 2-wheel trailers are available with boom spray options and hose reel accessories to match any spraying application.



1905 NW 40th Court Pompano Beach, FL 33064 | Phone: 954-295-3144 | Fax: 888-229-4341  
 randkpump.com | Email: ken@randkpump.com



# Rain Bird



## Rain Bird® ESP-Me provides versatile control for residential and light commercial sites

Contractors often have to learn to install and program two or more different irrigation controllers to meet the needs of their diverse customer base. Others keep things simple by specializing in either residential or commercial systems—but end up limiting their growth and new job prospects. There’s a solution that offers contractors the best of both worlds—the Rain Bird® ESP-Me Modular Controller.

The ESP-Me controller builds upon all of the best features of its trusted predecessor, the ESP Modular. However, while the ESP Modular was limited to 13 stations, the ESP-Me offers the highest station count in its class. Simply install the optional three-station or six-station modules and expand the ESP-Me from its standard four stations all the way up to 22 stations.

With the ESP-Me, there’s no need to stock multiple controllers or teach crew members how to install and program them. This saves space on work trucks, ties up fewer dollars in inventory and decreases labor costs. These factors, combined with the ESP-Me’s highest-in-class station count, make this controller an outstanding value. By using the ESP-Me, contractors can save money, pass those savings on to their customers and potentially win more jobs.



### About our product:

1. The ESP-Me controller expands from four to 22 stations, making it ideal for both residential and light commercial sites.
2. With the ESP-Me, contractors can stock a single controller, saving space on work trucks and tying up less money in inventory.

The ESP-Me also offers a number of new, useful features that save contractors time and money. The Delay Watering feature allows users to easily postpone irrigation for up to 14 days and then automatically return to their normal watering schedule. Some landscaped areas aren’t easily reached by rainfall—like those shadowed by a deck or an overhanging eave. ESP-Me users can simply choose to bypass the rain sensor for those stations. The Seasonal Adjust by Program feature allows users to reduce watering to as little as 5 percent of the scheduled program times in cooler, wetter conditions or increase it by up to 200 percent during warmer, drier weather. The Total Run Time Calculator automatically tallies up the total amount of time a system is scheduled to run for any given program. On the rare occasion that the ESP-Me experiences electrical or programming issues, a bright red LED will either stay illuminated or flash, depending on the condition. Scrolling messages across the display alert users to a problem.

By combining practical features with a versatile station count, the ESP-Me helps contractors keep things simple while serving a larger customer base.



# Schiller Grounds Care

**S**chiller Grounds Care creates and brings to market a broad variety of landscaping, gardening and turf care equipment for residential and commercial use under the brand names of BOB-CAT, Classen, Little Wonder, Mantis, Ryan and Steiner. For nearly 100 years, professional landscapers and home gardeners have trusted these industry-leading brands to maintain and transform landscapes across the globe.

The Schiller Grounds Care brand/product lineup includes: BOB-CAT commercial and residential walk-behind and zero-turn mowers, Classen aerators, dethatchers, overseeders and sod cutters, Little Wonder landscaping & debris management equipment, Mantis tiller/cultivators, composters and handy yard care tools, Ryan turf renovation equipment, and Steiner tractors and attachments.

**New products from Schiller Grounds Care include:**

➤ **BOB-CAT CRZ** – All of the power and performance of a BOB-CAT professional zero-turn riding mower harnessed for the homeowner. BOB-CAT consistently delivers the most “beast for the buck” in the industry and the brand’s first zero-turn riding mower designed for the homeowner is no exception.

➤ **BOB-CAT XRZ** – Introducing the new BOB-CAT XRZ – a CRZ for the large property owner with enhanced comfort and performance features that are attractive to the commercial cutter as well. The new BOB-CAT XRZ (shown above) features a 3100 Hydro-Gear transaxle, deluxe seat for all-day riding comfort, and 22-inch rear drive wheels for surefooted agility and a smooth ride on hilly and undulating terrain. Get a sneak peak and test drive the new BOB-CAT XRZ at this year’s GIE+EXPO. GIE+EXPO Exclusive!

➤ **Classen Reciprocating Aerator** – As easy to operate and maneuver as a 21-inch mower with eight core tine rods that easily



penetrate even the most compacted soil. Productivity: 450 tine revolutions per minute, covers up to 26,000 square feet per hour, providing more aeration holes per square foot than traditional drum-style, walk-behind aerators.

➤ **Little Wonder Hydro Brush Cutter** – The newest brush cutter from Little Wonder (BRC-26) features a rugged design that stands up to your biggest brush-cutting challenge. Top-of-the-line features include: Hydro-Gear T2 Hydrostatic Transaxle, 28-inch cutter deck, 26-inch reversible cutter blade, solid linkage controls, speed control dialer, and puncture-resistant X-Trac tires.

➤ **Ryan Lawnaire Aerator with EST** – New Easy Steer Technology enables the industry-leading Lawnaire IV & V walk-behind aerator to easily steer while the tines are in the ground. Intuitively responsive, the EST’s outer tines rotate faster as the operator steers left or right, embracing turns while maintaining deep core penetration. See how easy turf aeration can be when you take control with the new Ryan Lawnaire with EST.



1028 Street Road, Southampton, PA 18966 | **Phone:** 877-596-6337 | [schillergc.com](http://schillergc.com) | GIE+EXPO booth #3052 & 7506D

[Youtube.com/mantisyardandgardentools](https://www.youtube.com/mantisyardandgardentools) | [Facebook.com/mantistiller](https://www.facebook.com/mantistiller) | [Twitter.com/mantistiller](https://twitter.com/mantistiller) | [Youtube.com/bobcatmowers](https://www.youtube.com/bobcatmowers)  
[Facebook.com/bobcatmowers](https://www.facebook.com/bobcatmowers) [Youtube.com/classenturfsolutions](https://www.youtube.com/classenturfsolutions) | [Youtube.com/ryanturfrenovation](https://www.youtube.com/ryanturfrenovation) | [Facebook.com/ryanturfcare](https://www.facebook.com/ryanturfcare)