

continued from page 49

drip is understanding their soil types.

"Soils are typically grouped into three main categories: clay, loam and sand," Clark says. "We suggest contractors use lower flow rates and wider spacing for the clay-type soils, and higher flow rates and closer spacing for sandy soils. You have to match the

application rate of the drip system to the infiltration rate of the soil. Then it becomes a matter of scheduling."

Clark says root intrusion, one of the biggest challenges for maintaining drip systems, has been largely eliminated by the use of root barrier as well as Tech-filter, a disc filter impregnated with the chemical root inhibitor trifluralin.

Dave Palumbo, manager of Rain Bird's Drip Division, believes the biggest challenge getting contractors to use drip is unfamiliarity.

"Once contractors install the first two or three drip systems, they learn how to bid it," he says. "They see they can do it efficiently, and they can make money, too." LJM

## WHY BE A DRIP?

- › Drip offers significant water savings.
- › There's no overspray or evaporation loss like with sprinklers, making it a viable choice for any area suffering water restrictions.
- › Drip eliminates runoff and erosion.
- › Drip delivers the right amount of water slowly down deep to plant roots.
- › Drip can deliver water below the surface and help keep the top of the ground dry.
- › Drip reduces weed growth because it delivers water only to the base or root zones of the landscape plants.
- › Plants are healthier when water is delivered to their roots regularly.
- › Drip provides and maintains a consistent soil moisture level.
- › Leaves stay dry and are less susceptible to sun damage, fungus and insects.
- › Drip encourages fast, steady growth early in the season, and disease-resistant deep-rooted plants later.
- › Drip is quiet and almost invisible.
- › Deep, even moisture levels under the soil surface benefit worms and microorganisms, which, in turn, help improve soil and keep it loose and full of air.

Request a web-based demonstration!

# QXpress™

## SCHEDULING SOFTWARE

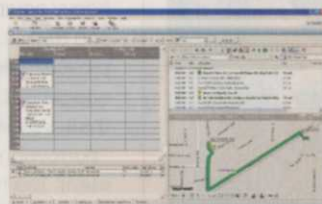


### QXpress v8.0 (NEW!)

As a QuickBooks user, you should use QXpress. Getting started couldn't be easier, since QXpress instantly integrates with your existing customer list. Simply schedule new services for your QuickBooks customers, and print route lists and work orders. When services are complete enter job cost information and post them to QuickBooks as invoices! No double entry. No wasted time.

### QX Mobile v2.0

QX Mobile is the most advanced PDA software available for Windows Mobile Pocket PCs. Take QXpress with you in the field to track start times, stop times, materials used, look up customer information, and sync wirelessly with the office. New in v2.0 is the ability to customize your own data entry screen, and print templates designed in QXpress.



### QX Mapping

Every extra hour your crews spend behind the wheel, is an extra hour they are not generating revenue. Using Microsoft MapPoint, QX Mapping greatly reduces wasted drive time by optimizing routes and printing driving directions.

call 1.877.529.6659 or visit [www.qxpress.com](http://www.qxpress.com) for a web based demonstration



QuickBooks is a registered trademark and service mark of Intuit Inc. in the United States and other countries. QXpress is a registered trademark of Alcot Incorporated. QuickBooks and the "Designed for QuickBooks" Logo are trademarks and/or registered trademarks of Intuit Inc. displayed with permission. The use by Alcot of the Logo does not signify certification or endorsement of Alcot's software by Intuit, and Alcot is solely responsible for its software and the support and maintenance of the software.



# PRODUCTS

## TOOLS OF THE TRADE

### Custom options

Featuring an 800-lb. capacity and a durable, corrosion-resistant chassis, the E-Z-GO MPT 800 is able to perform a wide variety of tasks. It can be customized to fit the needs of any operation. Choose from a wide range of options and accessories, including a cab, an electric or gas-powered drivetrain, a power-dump bed or front hydraulic disc brakes. [www.ezgo.com](http://www.ezgo.com) or 800/241-5855

PRODUCT  
SPOTLIGHT  
UTILITY  
VEHICLES



### Snappy installation

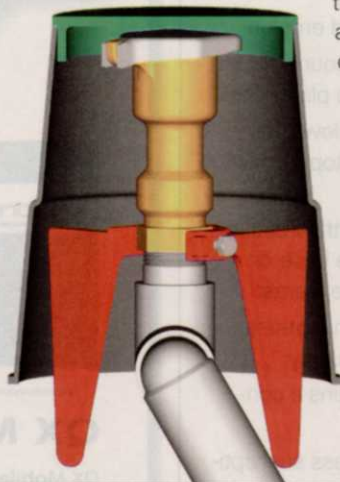
Lay more block in less time and less strain with Versa-Lok's Square Foot Versa-Lifter. Prongs on either end of the lifter are placed in the retaining wall unit's end holes and as the hinged bar is lifted, the prongs grip the

holes, and the weight of the block secures its hold. The two-handed carrying handle has a comfortable rubber sleeve and is positioned to balance the 87-lb. unit evenly for maximum ease of carrying. Contact [www.versa-lok.com](http://www.versa-lok.com) or 800/770-4525. [www.versa-lok.com](http://www.versa-lok.com) or 800/770-4525

### Prevent accidents

Underhill International's the Claw helps prevent dangerous and unpredictable quick coupler accidents. Quick couplers often become unthreaded from swing joints during hand-watering and cause a high-pressure geyser of water that floods the turf and can cause serious injury to a maintenance crew. To prevent

this hazard, the Claw acts like an anchor, holding the quick coupler securely in place, restraining rotational, vertical and horizontal motion. It fits inside most valve boxes without any cutting or alterations, and attaches directly to the base of the quick coupler valve with a hexagonal receptacle and single stainless steel bolt. [www.underhill.us](http://www.underhill.us) or 866/UNDERHILL



### Anti-theft

The Equipment Lock Co. (TELC) provides anti-theft devices for all types of heavy equipment, trucks and trailers. By practicing proactive equipment security, equipment owners can prevent theft, vandalism and unauthorized "borrowing" of their heavy equipment. The heavy-duty wheel lock, when installed, stops any wheel from rolling. The rugged-tough lock is so versatile it fits all types of equipment, from small utility trailers to all types of commercial lawn mowers. The product, available with powdercoating and/or electroplate finish, features an adjustable wheel lug cover to prevent thieves or vandals from removing the wheel. [www.equipmentlock.com](http://www.equipmentlock.com) or 866/LOK-IT-UP

PRODUCT  
SPOTLIGHT  
UTILITY  
VEHICLES



High Quality  
Mowing

INDEPENDENT  
INNOVATORS

Take a Test Drive Today

# WALKER MOWERS

5925 E. Harmony Road • Fort Collins, CO 80528  
800.279.8537 • [www.walkermowers.com](http://www.walkermowers.com)





PRODUCT  
SPOTLIGHT  
UTILITY  
VEHICLES

### Handy power

Honda Power Equipment's EU3000i Handi adds increased portability to the fuel efficiency and reliability of the EU3000i generator. The lightweight and user-friendly unit provides customers with dependable, portable power, increasing the breadth of the Honda EU generator Super Quiet Series lineup through enhancements in noise, size, usability and fuel consumption. It produces 3,000 watts, yet weighs just 77.6 lbs. It features built-in wheels, two fixed handles and a folding handle to allow for easy transport. It's towing weight is 17.6 lbs. Its GX160 engine can operate on one tank of fuel for more than four hours. [www.hondapowerequipment.com](http://www.hondapowerequipment.com) or 770/497-6400



### Diesel doer

Cub Cadet's new Volunteer 4x4D utility vehicle combines the rugged simplicity and low maintenance of an 854cc, 3-inline cylinder, Yanmar diesel engine with the advanced performance of an independent suspension. Features include a wide stance, welded steel frame, and low center of gravity for stability, traction and control. The unit offers high-back seats, trail tires, a heavy-duty air filter and a fully enclosed CVT transmission.

[www.cubcadet.com](http://www.cubcadet.com) or 877/835-7841



### Extreme accessory

Specialty Equipment, LLC introduces the extreme tailgate ramp, which bolts to any tailgate and takes up about 5.5-in. of bed space. Using an expanding baby-gate-type design, it extends as far as 108 inches, creating a 57-in.-wide ramp capable of holding as much as 1,600 lbs. It's constructed entirely of extruded aluminum and stainless steel, so it's light and won't rust. It has high tensile strength thanks to the interlocking web design. An optional tailgate extension kit allows the closed ramp to flip up and become an alternate tailgate on the rear of a truck's gate.

[www.specialtyequipmentusa.com](http://www.specialtyequipmentusa.com) or 772/398-2270

# INTELLIGENT USE OF WATER FILM COMPETITION

## ANNOUNCING OUR NEW GREEN INDUSTRY AWARD WIN A \$6,000 PRIZE

With a new award category specifically for Green Industry professionals, there's never been a better time to get involved with The Intelligent Use of Water™ Film Competition. Create the film that best explores smart water use and you'll receive \$6,000, plus an invitation to a special screening this fall in Los Angeles.

Learn more at: [www.iuowfilm.com](http://www.iuowfilm.com)

RAIN BIRD

Landscape  
Management



# CLASSIFIED SHOWCASE

## ADVERTISING INFORMATION

Call Kelli Velasquez at 800-669-1668 x3767 or 216-706-3767, Fax: 253-484-3080, E-mail: kvelasquez@questex.com



Payment must be received by the classified closing date. We accept Visa, MasterCard, and American Express.

### Mail LM Box # replies to:

Landscape Management Classifieds, LM Box # \_\_\_\_\_  
306 W. Michigan St., Suite 200  
Duluth, MN 55802  
*(please include LM Box # in address)*

Every month the Classified Showcase offers an up-to-date section of the products and services you're looking for. **Don't miss an issue!**

## BUSINESS OPPORTUNITIES

Our proven bolt-on landscape lighting & holiday decorating business systems:

- ★ Diversify Your Services
- ★ Attract Affluent Clients
- ★ Add Profitability



Call Today! 1.800.687.9551  
www.TheDecorGroup.com

landscapemanagement.net

## SELL MORE LANDSCAPES & JOBS



FREE DVD & TRAINING  
SYNTHETIC LAWNS

Two **NEW** Profit Centers - 50%+  
Two **NEW** Revenue Streams  
Two **NEW** Customer Bases  
A Simple, Easy Add-On Service  
Buy Factory Direct - Wholesale  
**NO PAYMENTS & INTEREST FOR 90 DAYS**

We **FUND** Your Installs  
1-800-334-9005  
www.allprogreens.com/training

## SELL MORE LANDSCAPES & JOBS



FREE DVD & TRAINING  
SYNTHETIC GOLF GREENS

Two **NEW** Profit Centers - 50%+  
Two **NEW** Revenue Streams  
Two **NEW** Customer Bases  
A Simple, Easy Add-On Service  
Buy Factory Direct - Wholesale  
**NO PAYMENTS & INTEREST FOR 90 DAYS**

We **FUND** Your Installs  
1-800-334-9005  
www.allprogreens.com/training



### WANT TO BUY OR SELL A BUSINESS?

Professional Business Consultants can obtain purchase offers from numerous qualified potential buyers without disclosing your identity. There is no cost for this as Consultant's fee is paid by the buyer. This is a **FREE APPRAISAL** of your business.

If you are looking to grow or diversify through acquisition, we have companies available in **Lawn Care, Grounds Maintenance, Pest Control and Landscape Installation** all over the U.S. and Canada.

182 Homestead Avenue, Rehoboth, MA 02769

708-744-6715 • Fax 508-252-4447  
E-mail pbcme1@aol.com

## Incorporate

for as little as \$99

Visit [www.incorporate.com](http://www.incorporate.com)  
or call 800-616-0216

— THE —  
**COMPANY**  
CORPORATION™

INCORPORATING WHAT'S RIGHT FOR YOU

## HELP WANTED



### SERPICO LANDSCAPING, INC.

A successful 19-year-old business in the SF Bay Area has dynamic opportunities for experienced landscape maintenance professionals to join us as:

- Account Managers
- Branch Managers

For Info. Call (510) 293-0341  
jobs@serpicolandscaping.com



## Dig up some new customers.

Advertise in Landscape Management.

Contact Kelli Velasquez to reserve your ad space today!  
800-669-1668 x3767 or kvelasquez@questex.com

## Looking to hire?

Reach **thousands** of professionals in your industry by placing a classified ad.



## HELP WANTED (CONT'D)

### FLORASEARCH, INC.

In our third decade of performing confidential key employee searches for the landscape/horticulture industry and allied trades worldwide.

Retained basis only.

Candidate contact welcome, confidential and always FREE.

1740 Lake Markham Road  
Sanford, FL 32771

407-320-8177 ♦ Fax: 407-320-8083

E-mail: [search@florasearch.com](mailto:search@florasearch.com)

[www.florasearch.com](http://www.florasearch.com)

## SOFTWARE

# Wintac™

The #1 all-in-one software for lawn care and landscaping contractors



Scheduling, Routing  
CRM, Service History  
Job Costing, Estimating  
Inventory, Purchasing  
Automatic Billing, Invoicing  
AR/AP, Payroll, Accounting  
Marketing, Vehicle Management

Check out the amazing software that landscaping contractors everywhere are talking about!

[www.wintac.net](http://www.wintac.net) 1-800-724-7899

## TAKE YOUR OFFICE WITH YOU CLIP2Go



GPS Tracking + Bilingual Directions + Start/Stop Times for each Job  
of Crews\*

\* Requires CLIPin, a Windows Mobile device, Garmin mapping software, Microsoft MapPoint and GPS receiver.

To Learn more call **800-635-8485** [www.clip.com](http://www.clip.com)

## Did you know?

All Landscape

Management

classifieds are

posted online.

[landscapemanagement.net](http://landscapemanagement.net)

## AD INDEX

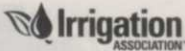
Agrium Advanced Tech.....p11	CA Association of Nurserymen.....p48	PBI Gordon.....cv2-1, 37
Alocet.....p51	Collier Metals.....p45	Pine Hall Brick.....p41
Ameristar.....p6	DeWitt.....p26	Progressive Commercial.....p22
Andersons.....p27	Dow AgroSciences.....p3	Rainbird.....p5, 53, cv3, Insert
Ariens.....p19	Drafix.....p16	Sepro.....p21
Arysta.....p7, 35	DuPont.....p15, 29	Target Spec Products.....p42
BASF Corp.....p13, 31	Exakttime.....p14	Turf Products.....p41
Bobcat.....p23	Hortica Insurance.....p17	U.S. Lawns.....p50
	John Deere Commercial.....cv4	Versa Lok.....p43
	L.T. Rich.....p6	Walker Mfg.....p52
		Wilson-Oyler Group.....p39

## EDIT INDEX

Ariens.....32	HighGrove Partners.....12	Robertson Lawn Care.....12
Bad Boy.....26	Husqvarna.....26	Scag Power equipment.....26
Briggs & Stratton.....25	Hustler.....26	SEK (Snap Edge/ Kerr Lighting).....44
Cub Cadet Yanmar.....32	Jacobsen.....12	Tensar International Corp.....44
Davey Tree Expert Co.....14	JP Horizons.....9, 18	The Brickman Group.....48
Deere & Co.....14, 32	Kehoe & Co.....24	TOCA.....9, 10, 56
Dixie Chopper.....25	LebanonTurf.....10	Williamette Landscape Services.....12
EnviroGard.....26	Lehr.....25	Wilson-Oyler Group.....36
E-Z-GO.....12	Netafim.....49	Wood Landscape Services.....46
Ferris Industries.....25	P.J. Pappas Co.....49	Zipper.....26
Google.....38	Pave Tech.....44	
Grant & Power.....40	PLANET.....47	
	Quality Care.....30	
	Rain Bird.....49	

Indices are provided as an additional service. The publisher does not assume any liability for errors or omissions.

## AFFILIATE ASSOCIATIONS



LANDSCAPE MANAGEMENT (ISSN 0894-1254) is published monthly (12 issues per year) by Questex Media Group, Inc., 306 W Michigan St, Suite 200, Duluth, MN 55802. Subscription rates: one year, \$54, two years \$76 in the United States & Possessions; \$87 for one year, \$127 for two years in Canada and Mexico; all other countries \$165 for one year, \$246 for two years. For airmail delivery, include an additional \$75 per order annually. Single copies (pre-paid only): \$8 in the United States; \$10 in Canada and Mexico; \$15 all other countries. Back issues, if available: \$16 in the U.S.; \$20 in Canada and Mexico; \$30 all other countries. Add \$6.50 per order for shipping and handling. Periodicals postage paid at Duluth, MN 55806 and additional mailing offices. POSTMASTER: Please send address changes to Landscape Management, P.O. Box 1268, Skokie, IL 60076-8268. Canadian G.S.T. number: 840 033 278 RT0001. Publications Mail Agreement Number 40017587. Printed in the U.S.A.



Copyright 2009 Questex Media Group, Inc. All rights reserved. No part of this publication may be reproduced or transmitted in any form or by any means, electronic or mechanical, including by photocopy, recording, or information storage and retrieval system, without permission in writing from the publisher. Authorization to photocopy items for internal or personal use, or the internal or personal use of specific clients, is granted by Questex Media Group, Inc. for libraries and other users registered with the Copyright Clearance Center, 222 Rosewood Dr., Danvers, MA 01923 phone: 978-750-8400 fax 978-750-4470; call for copying beyond that permitted by Sections 107 or 108 of the U.S. Copyright Law. For those not registered with the CCC, send permission requests to [questexpermissions@reprintbuyer.com](mailto:questexpermissions@reprintbuyer.com) or phone 800-494-9051 ext. 100.

Landscape Management does not verify any claims or other information appearing in any of the advertisements contained in the publication, and cannot take any responsibility for any losses or other damages incurred by readers in reliance on such content. Landscape Management welcomes unsolicited articles, manuscripts, photographs, illustrations and other materials but cannot be held responsible for their safekeeping or return. Questex Media Group provides certain customer contact data (such as customers' names, addresses, phone numbers and e-mail addresses) to third parties who wish to promote relevant products, services and other opportunities which may be of interest to you. If you do not want Questex Media Group to make your contact information available to third parties for marketing purposes, simply call 866-344-1315; 847-763-9594 if outside the U.S. between the hours of 8:30 am and 5:00 pm CT and a customer service representative will assist you in removing your name from Questex Media Group's lists.







## WHIT'SWORLD

MARTY WHITFORD EDITOR-IN-CHIEF

Contact Marty at 216/706-3766 or via email [mwhitford@questex.com](mailto:mwhitford@questex.com)

# Treasure trove

**A** 5-ft. iguana swimming laps in the hotel pool was my first clue. The resort staff and some of the more-settled guests acting like it was nothing was my second.

I didn't know it on the first day of the business meeting, but I soon discovered the treasure trove of animal and plant species we mainlanders call San Juan, Puerto Rico.

I, along with dozens of other attendees of the Turf and Ornamental Communicators Association's (TOCA's) 20th anniversary meeting, hit the mother (nature) load when we toured the El Yunque National Rainforest May 14.

El Yunque is the only sub-tropical rainforest located in a U.S. territory. The 28,000-acre worldly wonder is home to an array of wildlife — including the small and precious Coqui singing frog found nowhere else and the endangered Puerto Rican Parrot — as well as more than 250 species of trees, 50 types of ferns and 20 varieties of wild orchids.

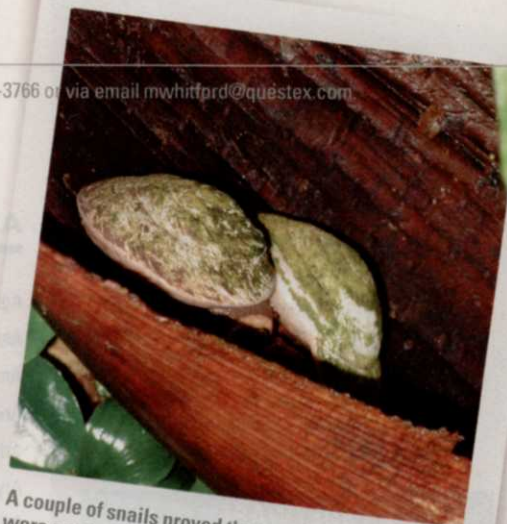
I'll let photos I took during the tour tell the story because I can't come close to doing it justice.

But, in closing, I must say it saddens me that globally we lose 50 million acres of rainforest annually due to our seemingly unquenchable quest for food, water and land development. To put things in perspective, the U.S. Forest Service oversees a com-

bined 200 million acres, including El Yunque. Hard to imagine those 200 million acres vanishing by 2013 — but that's what's happening on a global level to our most-precious parcels.

Tropical rainforests cover 2% of Earth's surface yet sustain half the world's plant and animal species. An estimated 40% of the world's oxygen is generated by rainforests in the Amazon alone. And one-quarter of all pharmaceuticals originate in tropical rainforests.

If we don't better sustain our rainforests, many more plants and animals — possibly including *homo sapiens* — will hit the endangered species list. Granted, that's down the road a bit. But, in the meantime, we can expect to continue to share our pools with more and more wildlife. After all, how can we expect them to respect our turf if we don't respect their habitats?



A couple of snails proved that my wife, Bridgid, and I were not the slowest-moving animals in the El Yunque National Rainforest.



Above: Igggy the iguana struts his stuff. Left: Yogi, our tour director, dons his rainforest version of Disney's mouse ears while holding a "pee pee flower" (African tulip).

See how much you'll save at  
[www.rainbird.com/savings](http://www.rainbird.com/savings)



Two dependable  
products,  
one low price.  
That's intelligent.



TALK TO YOUR  
SALES REP OR  
DISTRIBUTOR

**Save nearly 20% with Rain Bird® DV and JTV Valves.**

Get the quality you need and the savings you deserve with the unmatched reliability of Rain Bird® DV and JTV Series Valves—now at a lower list price. Delivering fewer callbacks, happier customers and more positive job referrals, these durable valves are engineered to save time, energy and money. Now that's The Intelligent Use of Water.™

**Rain Bird® DV and JTV Valves**

Save nearly 20% over Hunter® SRV-100G and Hunter® PGV-100JTG Valves.\*

**Rain Bird List Price**

**\$22<sup>50</sup>**

**Hunter List Price**

**\$27<sup>75</sup>**

\*Based on 2009 Rain Bird® and Hunter® List Pricing effective January 1, 2009.

**RAIN  BIRD®**