



# HINIKER



TRIP-EDGE  
C-PLOWS



TRIP-EDGE **V-PLOWS**

## STRENGTH & PERFORMANCE

Hiniker offers a *comprehensive line* of *professional grade* snowplows to meet the demands of the toughest conditions and snowplow operations.

**V-PLOWS:** Trip-edge design gives smooth operation and effective protection with a nine-inch high pivot point. Double acting cylinders provide positive moldboard position control.

**C-PLOWS:** Get the heavy-duty performance of the Hiniker trip-edge conventional plow plus the added versatility of a high performance backdrag plow. An amazing time-saver in driveways, parking lots and loading docks.

**SCOOP PLOWS:** High capacity concave shape captures snow to efficiently clear lots and parking areas. Angles left or right for conventional plowing.


**CONVENTIONAL PLOWS:** 30 inch tall high-curvature blades roll deep snow off quickly and efficiently. Commercial plowers will appreciate the extra strength and efficient design.

**HOMEOWNER PLOWS:** Low-maintenance poly moldboard surface reduces friction, never needs painting. 6 vertical and 2 diagonal ribs provide strength and support.

The *Quick Hitch* mounting system is interchangeable with all Hiniker snowplow models, adding versatility to your snowplow fleet.



HIGH-PERFORMANCE COMMERCIAL PLOWS




TRIP-EDGE  
SCOOP PLOWS



TRIP-EDGE  
CONVENTIONAL PLOWS



FULL-TRIP  
CONVENTIONAL PLOWS



FULL-TRIP  
HOMEOWNER PLOWS

HOMEOWNER

HINIKER COMPANY

Mankato, MN • 1-800-433-5620 • [www.hiniker.com](http://www.hiniker.com)

# HINIKER



continued from page 40

## High performance

**Hiniker** has added a pair of 1032 Series 10-ft. plows to its line of trip-edge snowplows, available in either electric/hydraulic or central hydraulic powered configurations. The 32-in.-tall moldboard uses a dent-resistant, corrosion-free plowing surface made of low-friction HDPE polyethylene. A compact joystick controller can be surface-mounted or handheld. Super-bright quad halogen headlamps are included.  
[Hiniker.com](http://Hiniker.com) or 800/433-5620



## Change it up

Available in 8.5- and 9.5-ft. lengths, the all-new **Meyer Super-V2** Snowplow features a pistol grip controller with one-button functionality, as well as interchangeable components with the standard Meyer Super-V plow. The manufacturer claims that the blade throws snow up to 62% better than a standard V-plow, and its snow rolling action reduces vehicle stress. The blade's wings taper from 30.5 in. up to 38 in.  
[MeyerProducts.com](http://MeyerProducts.com) or 216/486-1313

## New size

**SnowEx's** new 3-cu.-yd. capacity V-Maxx 9300 V-box-style spreader is compatible with 1-ton dump-bed and flatbed trucks. It features the patented SnowEx Material Feed System — a multi-angle, polyethylene hopper with a built-in, inverted "V" baffle configuration. Also included is an attached vibrator to reduce clumping and allow continuous material flow, regardless of what is being spread. A digital LED display with status monitoring and system protection is standard, as well as an auto-reverse function in the event of auger jams.  
[TrynexFactory.com](http://TrynexFactory.com) or 800/725-8377

## PERFORMANCE YOU CAN TAKE TO THE BANK!

A penny saved is a penny earned. But how does saving up to 680,000 pennies — \$6,800 — per vehicle/per year sound for your operation?

- SAVES Maintenance**  
No pulleys, sprockets, belts or chains.
- SAVES Material**  
Independently controlled auger and spinner speeds.
- SAVES Manpower**  
Patented auger drive systems ensure continuous flow.

**START SAVING TODAY!** Visit your local dealer to get more information on limited-time, free product offers from SnowEx.

**SNOWEX**  
LEADERS IN ICE CONTROL

1-800-SALTERS • [snowexproducts.com](http://snowexproducts.com)



UTILITY



TAILGATE



PRO



V-MAXX



REPLACEABLE TAILGATE



DE-ICING SPRAYERS




ACCUSPRAY



## Less weight, all muscle

The new **Western HTS** snowplow is a full-size, full-featured snowplow designed specifically for today's lighter half-ton, 4WD pickup trucks. It handles standard-duty commercial — and extended-use homeowner — applications, providing pro-like performance without the extra weight. [WesternPlows.com](http://WesternPlows.com)



**Built to overcome  
Mother Nature.**

**And that mother  
of a parking lot.**

**The All-New Contractor Plow from Meyer.**

The Meyer® Lot Pro™ features the tallest and most aggressive moldboard in the industry. Its 75-degree attack angle and totally redesigned “black iron” means that you will get better snow clearing and more reliable performance in less time. And the Lot Pro is backed by the industry’s best warranty protection, three full years on all components and five years on structural steel\*.

The new Meyer Lot Pro, because in snowplowing, downtime is not an option.

**Meyer®**  
**LOT PRO™**

[www.meyerproducts.com](http://www.meyerproducts.com)

\* Register your plow online at [meyerproducts.com](http://meyerproducts.com) to activate years three through five.



# PRO-TECH GIVES YOU MORE

## GROWTH OPPORTUNITY

"We were hired by another place because of the reputation we developed using Sno Pushers."

-Chris James  
Chris James Landscaping, Waldwick, NJ

## EFFICIENCY GAINS

"One Sno Pusher saves us the equivalent of five trucks."

-Darin Campbell  
Greenthumb Lawncare, Wichita, KS

## TIME TESTED QUALITY

"Sno Pushers are far superior to the competition."

-Lawrence Neville  
Royal Turf Chemical Lawn Care, Stirling, NJ

## VALUE

Pro-Tech is offering 20% off all Sno Pushers until September 30, 2009, while distributor supplies last. Visit our website to see our vast product line and to find your local distributor.



**PRO-TECH**<sup>®</sup>

MANUFACTURING & DISTRIBUTION



[www.snopusher.com](http://www.snopusher.com) • 888-PUSH-SNO





# PONDS NEED *NOT* APPLY

Water features such as pondless waterfalls often serve as landscapes' crown jewels.

Create a disappearing waterfall in 12 easy steps.

BY GARTH EPP

## POND-FREE WATER

FEATURES, also known as “pondless,” “no pond” or “disappearing” waterfalls, range in size from 12 in. tall and 8 in. wide, up to 20 ft. tall and wide. Many have long meandering streams, while others are simply falls that vanish into a bed of

rocks. Because these disappearing waterfalls do not include ponds, the maintenance and upkeep on these water features is minimal.

The first step in the construction process is to determine the desired outcome of the project by the homeowners. I am not referring to

visually how it should look, but more how they want their lives to improve with changes to their landscape. This answer to this question is key to the success of the entire project.

Once you have determined the motives for wanting such a feature, tour

the yard and the interior of the home. Consider any location that will meet their desires and be enjoyed from both the interior and exterior of the home. Keep in mind that an outdoor water feature can be enjoyed from indoors.

It is also often believed that a backyard waterfall is restricted to corners of the lot. This is not true. In many cases, the corners are the worst places for falls.



## PONDLESS WATERFALL

### Begin the build

**1** Use a garden hose to form the shape of the base of the falls where the water will disappear into the ground. Use brightly colored spray paint to create an outline on the ground. Make sure the area is not larger than the piece of pond liner you have purchased. This area will become the bottom collection basin for the water.

**2** Place the spillway unit for the falls in position.

This large plastic container will fill with water, then overflow and become the head of the waterfall. Depending on your desired outcome, you might simply have the unit rest on the ground and mound soil up around it, or you might

choose to elevate it higher to get more height to the falls. For a gentle flowing stream, it's generally suggested to have the unit 6 ft. to 8 ft. away from the bottom basin.

**3** Attach your plumbing pipes to the spillway before the excavation. Use a sealant like polytetrafluoroethylene (PTFE, or plumber's) tape on all threaded fittings. Now is the time to make sure everything is watertight, before it's all buried and concealed. Once the pipe is sealed and in place, you can cover it with soil you excavate from the basin to hide it from view. It's a good idea to make sure the pipe has a gradual slope from the spillway unit to the basin so it can be easily flushed and

drained if needed.

**4** Use a level to ensure the unit is sitting on even ground. If the ground is tamped well and solid, it will prevent the unit from becoming uneven from the ground settling.

**5** Dig the basin at the base of the falls. The basin does not need to be more than 24 in. deep. It's important to make sure the edges of the basin are level so it will fill evenly with water.

As your team digs the basin, use the soil to backfill around the water feature's spillway unit. It's a good idea to have someone stand in the spillway unit while it's being tamped and backfilled so it does not move out of position.

Water features routinely rank among the top landscape design/build projects homeowners are interested in adding.



## Landscape Design Software

that makes an impact!

visual impact imaging  
**EARTHSCAPES**

Landscape Design Software

Earthscapes is so popular for one simple reason: **it sells jobs!** By enabling you to provide your customers with professional proposals that include dazzling images, Earthscapes guarantees that you will make more sales. With this type of sales firepower working for you, your competition doesn't stand a chance.

- High resolution photo-imaging
- Design to-scale site plans in B&W or color
- Extensive Plant and Hardscapes Library
- Compatible with over 30 different file types
- Runs on Windows XP and Vista
- ...and many more outstanding features

[www.EarthscapesDesigns.com](http://www.EarthscapesDesigns.com)

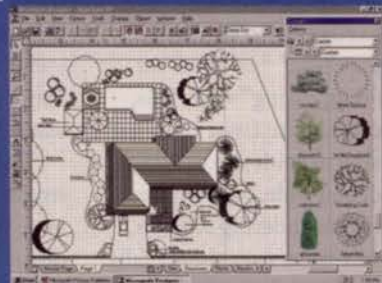
Visit our website for a free demo or call 330.259.7661



**#1 Landscape Design Software**

Professional. Easy to Use.  
Affordable.

Powered by:  
**COREL**







**WEB EXTRA!**

For more information on pondless waterfalls, visit [www.landscapemanagement.net/pondless\\_extra](http://www.landscapemanagement.net/pondless_extra).

**6** Once the basin is excavated, remove sharp objects such as roots or rocks from the basin. Now lay the geo-textile underlay in the basin, starting at the bottom, and work out all the slack so it conforms to the shape of the hole. The underlay is there

strictly to protect the underside of the liner. You don't need to line the future stream

bed at this point.

Now place the liner over the underlay. The liner should extend outside the basin. It can be cut back later if necessary. It's better to use a liner that's too large than too small. Provided all

was measured and planned ahead, it should fit correctly.

**7** Place the pump vault in the basin, with several large pieces of drainage pipe to act as filler in the basin bottom. This will reduce the amount of rock needed to fill the basin and will eliminate the weight of the rocks resting directly on the interior of your pond liner.

**8** Fill the basin with rinsed clean rock within a couple of inches from the top. Start with larger rocks on the bottom, and place smaller rocks on top. This acts as a natural filter for the feature.

**9** Once the rocks are in the basin, fill it with water to clean the rocks. Use a small sump pump to expel dirty water. This will help

Proudly Presented by: California Association of Nurseries and Garden Centers

## The Garden Market Expo

### The ONLY Expo for the Southwest!



**NEW LOCATION!**  
**FREE DRAYAGE!**  
**EXCITING FLOOR PLAN!**

**WHAT:** Garden Market Expo 2009  
**WHEN:** September 23 & 24, 2009  
**WHERE:** Las Vegas Convention Center, North Hall

Register **TODAY:**  
[www.GardenMarketExpo.com](http://www.GardenMarketExpo.com)

Call Stephanie at 1-800-748-6214 ext.#16,  
or email: [srodgers@cangc.org](mailto:srodgers@cangc.org)

#### OTHER EXCITING EVENTS

##### Golf Tournament @ Bear's Best

September 22, 2009  
Hosted beverage cart, free shuttle,  
catered luncheon, and exciting prizes!  
Contact: [dadams@cangc.org](mailto:dadams@cangc.org)

##### Wynn/Encore Grounds Tours

September 24, 2009  
Tour horticulture and floral facilities, 10  
acres of lush landscaping, one-hour tours!  
Contact: [dadams@cangc.org](mailto:dadams@cangc.org)

#### HOTEL INFO

##### Las Vegas Hilton Hotel

Host Hotel - Mention Garden  
Market Expo 2009 and receive a  
special room rate of \$129!  
1-800-635-7711



## PONDLESS WATERFALLS

Going pondless is a quick and cost effective way to add a waterfall.

the water in the completed project clear more quickly. Now attach the liner to the spillway. This process is very important to do correctly, so the water flows on top of the liner right from the source and does not get under the liner. Specific instructions for this step will be enclosed with the particular equipment that is purchased.

**10** Place a large rock on either side of the spillway spout to frame the head of the waterfall. Secure a flat rock on the spout using black waterfall foam. The rock should be no more than 3/4-in. thick. Slate works well.

**11** Create the stream and waterfall — the toughest part of the project. The

goal is to make the stream and waterfall blend perfectly into the landscape, as though the home and yard were built around it. The stream should twist and turn, as this will make it look more natural.

**12** After the stream is excavated, line it with an underlay and liner about 10x15 ft. in size. Then dig several large divots to inset larger rocks.

Do not form a fixed course for the water. It looks much more natural if the water appears to have chosen its own course of flow through a natural random assortment of rocks. In nature, water rocks are "placed" in uneven patterns along a stream or waterfall.



Carefully select and place varying-sized rocks on the perimeter of the stream.

Put black waterfall foam into the divots you dug earlier, and place large rocks on top. The foam will restrict water from flowing under rocks and will force it to flow above and around the rocks.

You can adjust and tweak the flow of the waterfall by placing smaller stones and gravel on the waterfall cas-

cases until the desired effect is achieved. This will change the sound and appearance of the flowing water. Remember: Without exception, large waterfalls require the use of large rocks. *L.M.*

*EPP is editor and owner of BuildingMyPond.com, an online resource dedicated to water gardening and water feature installation. He can be reached at 403/671-0797.*

# MONTAGE®

by AMERISTAR®

www.MONTAGEFENCE.COM



Fusion-welded for durability  
E-coated maintenance free finish  
Backed by 20-Year Warranty



AMERISTAR®

1555 N. Mingo Road Tulsa, OK 74116  
Phone 1-888-333-3422 Fax 1-877-926-3747  
www.montagefence.com Email: mktg@ameristarfence.com



## High Quality Mowing

INDEPENDENT INNOVATORS

Take a Test Drive Today

# WALKER MOWERS

5925 E. Harmony Road • Fort Collins, CO 80528  
800.279.8537 • www.walkermowers.com



HOW WILL I SURVIVE IN THIS ECONOMY?  
HOW DO I SURPASS MY COMPETITION?  
HOW CAN I SAVE MONEY ON OPERATIONS?  
WHERE ARE THE NEW BUSINESS OPPORTUNITIES?

# TOUGH QUESTIONS ON THE HORIZON



These days are demanding and you are demanding answers.  
Join us in Louisville for the 2009 Green Industry Conference  
October 28-31 - the answers are here.



**FIND THE ANSWERS.  
JOIN US.**

REGISTER TODAY, VISIT  
[GreenIndustryConference.org](http://GreenIndustryConference.org)

PLATINUM SPONSOR



**JOHN DEERE**

# 2009



## GREEN INDUSTRY CONFERENCE

OCTOBER 28-31, 2009  
Louisville, KY



# PROJECT PORTFOLIO

A SCRAPBOOK OF DESIGN/BUILD OVERHAULS

*The "elements" of design*

## THE MISSION

Designs by Sundown creates a balance of earth, air, water and fire for a Littleton, CO, residence.

The existing property consisted of 10 ponderosa pines, a few boulders, some dead cottonwood trees and grass — basically a clean slate. Designs by Sundown had a roughly \$500,000 budget to create an outdoor environment for the homeowners to enjoy all year long. The design, led by Greg Bobich, incorporates the four classic elements: earth, fire, water and air.

The earth element plays a dominant role in this landscape. The picturesque backdrop is the natural beauty of the Colorado mountains. Stone is used in abundance to blur the line between the foreground and the mountains off in the horizon. From the fieldstone outdoor hearth to the Siloam stone steps, to the use of boulders for fire pits and accents in perennial beds, Mother Nature's creations are showcased.

Fire and water are interspersed throughout the property. The pool area consists of a swimming pool, spa, a water feature, two unique fire elements and a pool house. The water's influence is essential to this experience from the gently flowing mountain stream to the bubbling hot tub and turquoise pool.

Two cozy fire elements are just a few steps from the pool. The upper terrace is home to a charming fieldstone wood-burning fireplace.

Open air is enjoyed in gathering spots throughout the property. Several sitting areas welcome guests to relax and enjoy the view.

The challenges that the Designs by Sundown team encountered were few, but massive. For example, the addition of more than 1,800 cu. yds. of soil, 125 tons of boulders, and the relocation of a leech field, which set the team back about a month.

