

# Hit more ringers.



## Crabgrass

When it comes to preventing the broadleaf and grassy weeds that most often plague your customers' turfgrasses, PRE-M® preemergent herbicide is right on target. Why pay more for other products when, time after time, university trials prove that PRE-M offers you better overall performance combined with unmatched value?

Superior performance made PRE-M the leading\* preemergent herbicide. Superior value widens the gap. PRE-M is everything you'd expect from LESCO®, the leading supplier in the professional turf care industry.

Ask your LESCO professional or call 1-800-321-5325 to learn how you can earn generous rebates for your PRE-M purchases.

Get behind the leading edge.



## Goosegrass



## Oxalis

# PRE-M®

The Leading Edge.



## Spurge

\*Source: Kline & Company report, US Acre Treatments by Turf Management.

Always read and follow label directions.

©1999 PRE-M® and LESCO® are registered trademarks of LESCO, Inc.

Periodical Reading Room  
DO NOT CIRCULATE

LESCO<sup>®</sup>

Circle No. 141 on Reader Inquiry Card

# The Bobcat 773 G-Series is the most comfortable, operator-friendly loader ever built!

Dramatic new vertical-path lift-arm design means improved jobsite performance.

Innovative G-Series cab design provides roomy comfort for operators of all sizes.

New high-output halogen headlamps provide excellent jobsite illumination.

Easy-to-reach controls and easy-to-view instrumentation. Other optional amenities include an electrical power port and a dome light.

Large front opening for easy entry and exit.

Rear pivot seat bar accommodates larger operators with ease, and doubles as a convenient armrest.

New high-flow (27 gpm) auxiliary hydraulics option now available for operating high-flow attachments.

Dual-mode auxiliary hydraulics switch in cab allows operator to choose between instant on-off or variable flow for improved attachment performance.

Other options include a super-efficient cab heater, easily removable side and top windows (for cleaning), easy-to-operate Advanced Hand Controls and full suspension seat.



Low-profile lift arms give super visibility to the sides, front and rear corners of the loader when loading, dumping and turning in tight quarters.

The NEW 773 G-Series



Skid-Steer Loader



*Introducing the new standard of design, productivity and comfort! The Bobcat 773 G-Series loader delivers a wide range of innovative operator-friendly features and exciting new value-added options. It all adds up to **The Bobcat Advantage...** total value that can't be matched.*



57-0

1,750-pound rated operating capacity and 118 in. lift height, plus **vertical lift path** and 29.6 in. reach make the 773 G-Series loader ideal for truck loading.



LH - standard instrument panel



RH - optional deluxe instrument panel

State-of-the-art instrument panels provide dozens of operational features, diagnostics and monitoring. Optional Deluxe Instrumentation package (shown above, right) includes automatic shutdown system, keyless start security system, lockouts, clock and job clock, multi-language display, even a "help" menu.

For a FREE "Bobcat Advantage" video and 40-page Buyer's Guide, call our 24-hour fax-back line: 1-800-662-1907 (ext. 702).

Circle No. 103 on Reader Inquiry Card

**BOBCAT**  
**INGERSOLL-RAND**

Melroe Company • P.O. Box 6019 • Fargo, ND 58108-6019

[www.bobcat.com/markets](http://www.bobcat.com/markets)



**bobcat**

# contents

December 1999 / #12 / VOLUME 38

## Green Book 2000

### 4. On the Record

Information made easy

BY: SUE GIBSON

### 6. Events

Who, what and where.

### 10. Key Associations

Key associations and their programs: ALCA, ANLA, ASLA, IA, NAA, PGMS, PLCAA, STMA, TPI

### 12. Green Industry Associations

These regional, local and national organizations have programs that may serve your needs.

### 30. University Contacts

These state resources might be the perfect contacts for your information needs.

### 36. Web Central

Here's the latest, most intriguing sites devoted to our industry. Many link to hundreds more sites.

## Quick Reference Tech Guide

### 40. Insects

Key pests of cool- and warm-season climates

### 42. Diseases

Cool- and warm-season turf diseases

### 44. Turf & Ornamentals

Selection and maintenance tips

### 48. Weed Control

Materials and methods that work

### 50. Operations

Ideas for a smoother, better operation

### 52. Editorial Index

► Features ► News stories ► Author index

### 56. Green Book Directory

► How to guide ► Suppliers ► Distributors ► Product index

### 107. Products & Services Index

### 147. Classified

### 150. Ad Index



## Editorial staff

Executive Editor	SUE GIBSON / 440/891-2729 / <a href="mailto:sgibson@advanstar.com">sgibson@advanstar.com</a>
Managing Editor	RON HALL / 440/891-2636 / <a href="mailto:rhall@advanstar.com">rhall@advanstar.com</a>
Associate Editor	FRANK H. ANDORKA JR. / 440/891-2709 <a href="mailto:fandorka@advanstar.com">fandorka@advanstar.com</a>
Chief Science Editor	KARL DANNEBERGER, PH.D. / <a href="mailto:danneberger1@osu.edu">danneberger1@osu.edu</a>
Group Editor	VERNON HENRY / 440/826-2829
Art Director	LISA LEHMAN / 440/891-2785
Sr. Graphic Designer	LISA BODNAR / 440/891-3101 / <a href="mailto:lbodnar@advanstar.com">lbodnar@advanstar.com</a>

## Reader advisory panel

JERRY GAETA	The Good Earth Inc. / Mt. Pleasant, SC
JUDSON GRIGGS	Landscape Design & Development / Sussex, WI
DWIGHT HUGHES	Dwight Hughes Nursery / Cedar Rapids, IA
LARRY IORII	Down to Earth Landscaping / Wilmington, DE
RICK KIER	Pro Scapes / Jamesville, NY
LOU KOBUS, JR.	Village Turf Inc. / Mount Vernon, VA
TOM RICCARDI	The Goodyear Tire & Rubber Co. / Akron, OH
JACK ROBERTSON	Jack Robertson Lawn Care / Springfield, IL

## Business staff

Group Publisher	JOHN D. PAYNE / 440/891-2786 / <a href="mailto:jpayne@advanstar.com">jpayne@advanstar.com</a>
Admin. Coordinator	DANIELLE HAGAN / 440/891-2734
Production Manager	KAREN LENZEN / 218/723-9129
Production Director	ROSY BRADLEY / 218/723-9720
Circulation Manager	KAREN EDGERTON / 218/723-9280
Green Book Coordinator	ANGELA PEARSON / 218/723-9418

## Advertising staff

Cleveland Headquarters	7500 Old Oak Blvd., Cleveland, OH 44130-3369
Eastern Account Manager	HEATHER M. FOX / 440/891-3168 Fax: 440/891-2675 <a href="mailto:hfox@advanstar.com">hfox@advanstar.com</a>
Midwest Account Manager	GENE HOMAN / 440/891-2772 Fax: 440/891-2675 <a href="mailto:ghoman@advanstar.com">ghoman@advanstar.com</a>
Account Manager	ANTHONY LAVDAS / 440/891-3118 Fax: 440/826-2865 <a href="mailto:tlavdas@advanstar.com">tlavdas@advanstar.com</a>
Classified Showcase	LESLIE ZOLA / 440/891-2670; 800/225-4569 x670 <a href="mailto:lzola@advanstar.com">lzola@advanstar.com</a>
Directory Sales	JESSICA HENDRICKS / 800/736-3665 ext. 104
Regional Offices	
Group Sales Director	TOM GALLIGAN / 262/653-9523 Fax: 262/653-9524 3901 52nd Ave., Kenosha, WI 53144-1830 <a href="mailto:tgalligan@advanstar.com">tgalligan@advanstar.com</a>
Western Sales	JOHN KIESEWETTER / 541/338-0022 Fax: 541/338-0044 859 Willamette St., Eugene, OR 97401 <a href="mailto:jkiesewetter@advanstar.com">jkiesewetter@advanstar.com</a>
	GRETCHEN WAGNER / 760/837-3734 Fax: 760/837-3785 74563 Pepper Tree Dr., Palm Desert, CA 92260 <a href="mailto:gwagner@advanstar.com">gwagner@advanstar.com</a>

## Marketing services

MARCIE NAGY	Reprints (500 minimum) / 440/891-2744
JOE GILLIAM	Circulation List Rental / 800/225-4569, ext. 773
ADVANSTAR MARKETING	Microfiche/film Copies 800/598-6008 Subscriber/Customer Service 218/723-9477/ 888/527-7008
TAMMY LILLO	International Licensing 218/723-9539 For current single copy, back issues, or film/fiche/ CD-Rom, call 800/598-6008; 218/723-9180



ROBERT L. KRAKOFF	Chairman and Chief Executive Officer
JAMES M. ALIC	Vice Chairman
DAVID W. MONTGOMERY	VP/Finance, CFO and Secretary
SKIP FARBER	Executive Vice President, Business Development
WILLIAM J. COOKE, ALEXANDER S. DEBARR	Executive Vice Presidents
ERIC I. LISMAN	Vice President & General Counsel
ADELE D. HARTWICK	Vice President-Controller & Treasurer

## on the record

BY SUE GIBSON / EXECUTIVE EDITOR

# Information made easy

It's no accident that the most successful people are often the most organized. They're organized all the time, with or without day planners, pocket "pals," voice mail, e-mail, snail mail, personal assistants, teleconferences, faxes, video conferences, and more.

Organization is a personal challenge for me — one that takes constant effort, especially since there are so many new people, responsibilities and ideas that enter my life, as they probably do yours. It takes time to organize, and although it isn't the most "fun" thing I do, I never regret it.

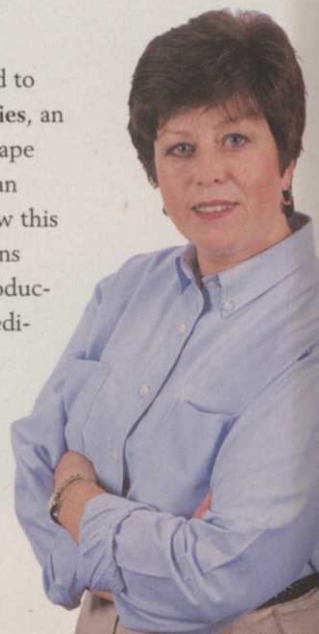
That's why it was a great exercise us last summer, when we reorganized the "Green Book 2000" into something more organized and useful for you. We selected information we think will serve you most: event updates, university contacts, associations, key Web sites and technical reference materials you can use all year. But we also spent considerable effort redefining our new "yellow" pages section, starting on pg. 56.

This new format will make it easier to find the products, services, and suppliers you need. Our list of categories more accurately reflects the types of things you buy to design, build, install and maintain all types of landscapes. Look for expanded listings of hardscape and irrigation products, specialty maintenance equipment, business management services, specialty software and many others.

We want this to be the most useful directory ever — something that will save *you* time and solve your problems quickly. Maybe you can use it to get even more organized.

### Is your organization organized?

Landscape Management is pleased to support the Skills Development Series, an ongoing training program for landscape professionals, sponsored by American Cyanamid. To learn more about how this program can improve your operations right from the start, attend the introductory seminar on Feb. 5, 2000, immediately following PLCAA's Management Conference in Tampa. To reserve a spot, call PLCAA at 800/458-3466. You'll be glad you did! — SG





## FROM ONE PROFESSIONAL TO ANOTHER.

*For more than 20 years, professionals like you have counted on Orthene® Insecticide. In recent years, Valent has added several other high-quality products to our Professional Products lineup, including Pinpoint®, a granular form of ORTHENE; Envoy®, your most practical grass herbicide choice; and Distance® Fire Ant Bait, an effective new way to break the fire-ant life cycle and kill the entire colony.*

*For more information about our growing lineup of products and services, visit the Valent web site at [www.valent.com](http://www.valent.com) or call 1-800-89-VALENT.*



*A Company You Can Grow With*

## January 2000

- 4-5 Maryland Turfgrass Conference & Trade Show, Timonium, MD; 301/345-4199.
- 4-6 Ontario Turfgrass Symposium, Toronto, Canada; 519/767-0758; [www.open.uoguelph.ca/OTS](http://www.open.uoguelph.ca/OTS)
- 5-7 Mid-Atlantic Nursery Trade Show, Baltimore, MD; 410/882-5300; [www.mants.com](http://www.mants.com)
- 5-7 Minnesota Nursery & Landscape Association Convention & Trade Show, Minneapolis, MN; 651/633-4987
- 6 New York State Turfgrass Association Northeast Regional Conference, Albany, NY; 800/873-8873
- 7-9 Greatest Show on Turf, Cobb Galleria Centre, Marietta, GA; 770/975-4123.
- 7 California Grounds and Landscape Seminar, Long Beach, CA; 909/656-3431
- 8 Western Nursery & Landscape Association Trade Show, Kansas City, MO; 202/789-5980, ext. 3006.
- 10-12 Nebraska Turfgrass Conference, Omaha, NB; 404/463-5418.
- 10-13 North Carolina Turfgrass Conference & Show, Charlotte, NC; 910/695-1333
- 10-14 Cornell Turfgrass Management Short Course, Ithaca, NY; 607/255-1792
- 11-13 Eastern PA Turf Conference & Trade Show, King of Prussia, PA; 814/863-3475; [www.paturf.org](http://www.paturf.org)
- 11-13 Kentucky Landscape Industries Winter Conference/Trade Show, Lexington, KY; 502/899-3622
- 12 Connecticut Nurseryman's Association Winter Meeting, Waterbury, CT; 202/789-5980, ext. 3006.
- 12 Landscape and Nursery Expo 2000, Sacramento, CA; 916/448-2522
- 12-13 University of Pennsylvania Naturalistic Landscape Design Symposium, Philadelphia, PA; 215/247-5777
- 12-14 Illinois Landscape Contractors Association's Design Seminar, Hoffman Estates, IL; 630/472-2851.
- 12-16 Sports Turf Managers Association Conference and Exhibition, St. Louis, MO; 800/323-3875
- 13 Green 'N' Growin' Show, Winston-Salem, NC; 202/789-5980, ext. 3006.
- 13-15 Winter Convention, Seattle, WA; Sponsored by Washington State Nursery & Landscape Association; 253/863-4482
- 14 Western Tree Management Symposium Arcadia, CA; 714/991-1900
- 15-16 University of Pennsylvania Naturalistic Landscape Design Symposium, New London, CT; 860/439-5060
- 15-20 Washington Association of Landscape Professionals and Oregon Landscape Contractors Association's Leadership Conference, Kauai, Hawaii; 503/253-9091
- 17-20 Michigan Turfgrass Conference, Lansing, MI; 517/321-1660; [michiganturfgrass.org](http://michiganturfgrass.org)
- 18-20 Midwest Turf Expo, Indianapolis;

Sponsored by Midwest Regional Turf Foundation; 765/494-8039

18-20 Mid-America Green Industry Convention, Kansas City, MO; 816/561-5323

19-21 Mid-Am Horticultural Trade Show, Chicago; 847/526-2010; [www.midam.org](http://www.midam.org).

20 Idaho Horticulture Show, Boise, ID; 800/462-4769

20 American Nursery & Landscape Association's 125th Anniversary Gala Dinner, Chicago; 202/789-2900; [www.anla.org](http://www.anla.org)

20-22 Tropical Plant Industry Exhibition, Ft. Lauderdale, FL; 800/375-3642

20-22 WinterGreen 2000, Atlanta; Sponsored by the Georgia Green Industry Association; 706/632-0100.

24-26 Central Environmental Nursery Trade Show (CENTS) 2000, Columbus, OH; Sponsored by Ohio Nursery & Landscape Association; 614/899-1195

24-28 Professional Horticulture Conference of Virginia, Virginia Beach, VA; 757/523-4734; [www.phcv.org](http://www.phcv.org)

24-28 Cornell Turfgrass Management to Preserve Water Quality Short Course, Ithaca, NY; 607/255-1792

25-27 Virginia Turf & Landscape Conference & Trade Show, Richmond, Va; Sponsored by Virginia Turfgrass Council; 540/942-8873

27 Northeastern PA Turf School & Trade Show Wilkes-Barre, PA; 814/863-3475; [www.paturf.org](http://www.paturf.org)

28 New England Grows, Boston; Sponsored by Associated Landscaper Contractors of Massachusetts, Massachusetts Arborist Association, Massachusetts Nursery and landscape Association, and New England Nursery Association; 202/789-5980, ext. 3006.

28 Illinois Landscape Contractors Association's Annual Excellence in Landscape Awards Program, Oak Brook, IL; 630/472-2851

29 Gulf States Hort Expo, Mobile, AL; 202/789-5980, ext. 3006

31-Feb. 1 Illinois Landscape Contractors Association's Foremanship Training, Willowbrook, IL; 630/472-2851

## February

1-3 Trees & Utilities National Conference, Nebraska City, NE; 402/474-5655

2-4 Illinois Landscape Contractors Association's Effective Landscape Selling Seminar, Willowbrook, IL; 630/472-2851

2-6 Northwest Flower and Garden Show, Seattle, WA; 206/789-5333

3-6 ANLA 2000 Management Clinic, Louisville, KY; 202/789-2900; [www.anla.org](http://www.anla.org)

4-6 PLCAA Management Conference, Tampa, FL; 800/458-3466

5 Landscape Management Skills Development Series, (during PLCAA Management Conference); 800/458-3466

6-9 Associated Landscape Contractors of America Executive Forum, Las Vegas, NV; 800/395-2522; [www.alca.org](http://www.alca.org)

9 Nevada Landscape Association Trade Show and Conference Reno, NV; 775/673-0404; [www.nevadanla.com](http://www.nevadanla.com)

9-11 Western PA Turf Conference & Trade Show Monroeville, PA; 814/863-3475; [www.paturf.org](http://www.paturf.org)

10-12 Turfgrass Producers International Conference & Expo San Antonio, TX; 800/405-8873

15-17 Illinois Landscape Contractors Association's Winter Seminar Lisle, IL; 630/472-2851

16-17 Landscape Industry Show. Long Beach, CA; Sponsored by California Landscape Contractors Association; 916/448-2522

16-18 Landscape Architecture Association Winter Workshop Bethesda, MD; 301/948-0810

21-23 Michigan Forestry and Park Association Winter Conference Lansing, MI; 517/482-5530

21-25 Virginia Tech Turfgrass Ecology and Management Short Course Blacksburg, VA; 540/231-5182

21-25 Cornell Turfgrass Management Short Course Fishkill, NY; 607/255-1792

26-3/5 Southern Spring Show Charlotte, NC; 704/376-6594

28 New York State Turfgrass Association Southeast Regional Conference Suffern, NY; 800/873-8873

## March

1 The Nassau Suffolk Landscape Gardeners Association Annual Professional Turf & Plant Conference, Huntington, NY; 516/665-2250

2-5 Wichita Lawn, Flower and Garden Show, Wichita, KS; 316/721-8740

6-9 New England Regional Turf Conference & Show, Providence; Sponsored by New England Turf Association; 401/848-0004

9-10 Ohio State University Sports Turf Short Course, Strongsville, OH; 614/292-4230

9-12 Associated Landscape Contractors of America Student Career Days Starkville, MS; 800/395-2522; [www.alca.org](http://www.alca.org)

11 Illinois Landscape Contractors Association's Semiannual Landscape Equipment Auction, Crystal Lake, IL; 630/472-2851

11-19 Chicago Flower and Garden Show, Chicago, IL; 312/321-0077; [www.chicagoflower.com](http://www.chicagoflower.com)

15-20 National Arborist Association Winter Management Meeting, Bermuda; 603/673-3311

23 Nevada Landscape Association Trade Show and Conference, Las Vegas, NV; 775/673-0404; [www.nevadanla.com](http://www.nevadanla.com)

24 New York State Western Regional Turfgrass Conference, Buffalo, NY; 518/783-1229; [www.nysta.org](http://www.nysta.org)

24-26 Capital District Garden & Flower Show, Troy, NY; 518/356-6410

## April

5 New York State Turfgrass Association Adirondack Regional Conference, Lake Placid, NY; 800/873-8873

9-12 North American Snow Conference, Traverse City, MI; Sponsored by the American Public Works Association; 816/472-6100

## June

15-16 Warm Season Turfgrass Research Tour, Maricopa, AZ; Sponsored by Pennington Seeds and Seeds West; 520/783-2050

## July

13-16 ANLA Convention & Executive Learning Retreat, Vancouver, BC; 202/789-2900

15-18 Texas Turfgrass Association Conference and Show, Galveston, TX; 409/690-2201

19-21 Turfgrass Producers International Summer Conference & Field Days, Spokane, WA; 800/405-TURF

22-24 International Lawn, Garden and Power Equipment Expo, Louisville, KY; 502/562-1962; [expo.mow.org](http://expo.mow.org)

24-25 PLCAA's Legislative Day on the Hill & Arlington Renewal Project, Washington, DC; 800/458-3466; [www.plcaa.org](http://www.plcaa.org)

## September

7-8 Southwest Horticultural Trade Show Phoenix, AZ; Sponsored by the Arizona Nursery Association; 480/966-1610

## October

28-30 2000 American Society of Landscape Architects Annual Meeting and Expo, St. Louis, MO; 202/898-2444

## November

1-3 Eastern Regional Nurserymen's Association Expo 2000, Atlantic City, NJ 800/376-2463

3-7 Green Industry Expo & Conference (PLCAA, PGMS, ALCA), Indianapolis, IN; 800/458-3466

9-11 Tree Care Industry Expo, Charlotte, NC; National Arborist Association, 800/733-2622; [www.natlarb.com](http://www.natlarb.com)

12-14 20th International Irrigation Show (Irrigation Association), Phoenix, AZ; 703/573-3551; [www.irrigation.org](http://www.irrigation.org)

14-16 Virginia Turf & Landscape Conference & Trade Show, Virginia Beach, VA; 540/231-9738

14-16 New York State Turfgrass Association Conference & Show, Syracuse, NY; 518/783-1229; [www.nysta.org](http://www.nysta.org)

## December

5-7 Ohio Turfgrass Foundation Conference and Show, Columbus, OH; 888-683-3445

12-14 New Jersey Turfgrass Expo, Atlantic City, NJ; 732/821-7134; [www.njturfgrass.org](http://www.njturfgrass.org)



# Put up a wall that lets your imagination run wild.

Anchor Wall Systems takes you beyond the barriers of traditional retaining walls into a world of design freedom where pins, clips and mortar are things of the past.

Anchor's patented pinless technology and integrated design conforms to virtually any configuration providing maintenance-free solutions for golf courses, residential sites, commercial projects, parks, towering interstate retaining walls and waterfront applications. The natural, rock face texture and warm earthtones accent any landscape environment.

Call 1-800-473-4452, for the Anchor Wall Systems Dealer nearest you.

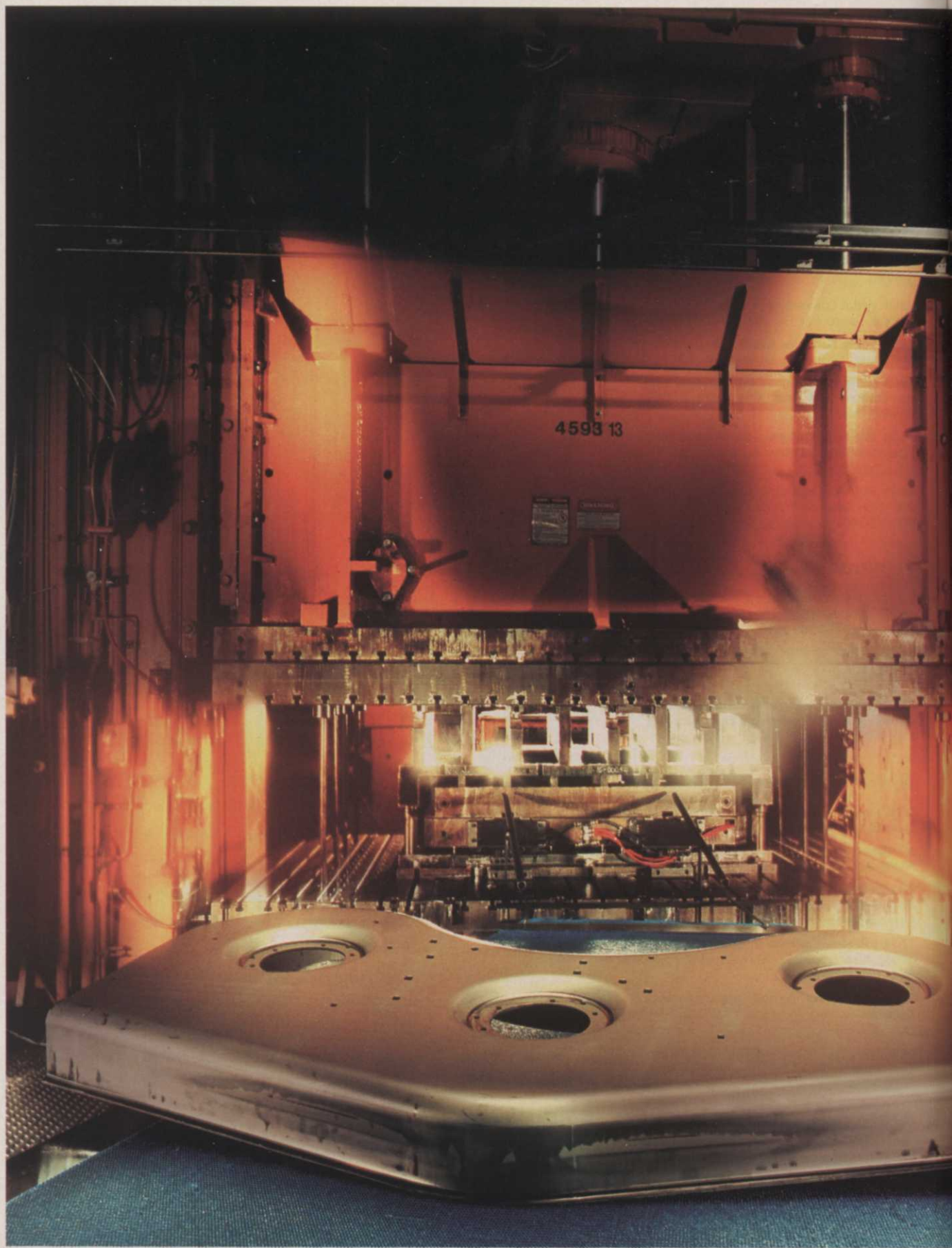
Visit our website at [www.anchorwall.com](http://www.anchorwall.com) to download AnchorCAD® or to order free AnchorWall™ version 2.0 design software.

**ANCHOR WALL SYSTEMS**



5959 Baker Road, Suite 390 Minnetonka, MN 55345-5973 • 1-800-473-4452





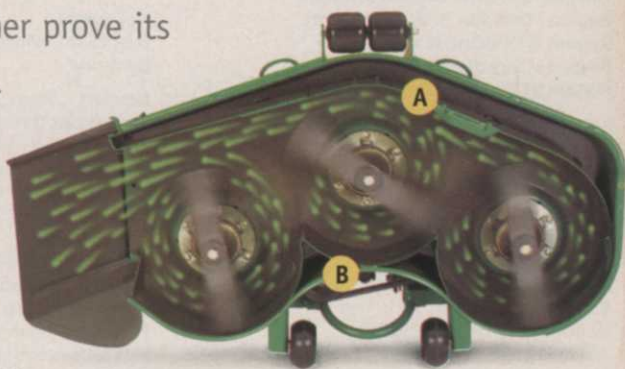
**7IRON** Its inspiration was the passion to build the best. Four years and four million pounds of pressure later, it's finally ready. Introducing the 7-Iron™ mower deck from John Deere. Stamped from a single sheet of incredibly thick 7-gauge (.177 inch) steel, in the industry's largest press, its perfectly smooth and impossibly strong shell (shown to the left) has no welds to break, or irregular



areas to catch clippings. A full-length front baffle **A** eliminates any dead space and brushes grass into an ideal vertical position. An almost unimaginable depth (5.75 inches at maximum **B**) creates a superior vacuum in which to cut. A multi-step electrostatic paint

## A diamond isn't the only thing formed by tons of pressure.

process (impressive for the automotive industry, let alone mowing) guards against rust. While features such as a rubber deflector shield and aluminum spindle hubs further prove its engineering excellence. (Rubber is more flexible than steel, and aluminum die casting more precise.) Available in 48-, 54-, and 60-inch widths, and only from



your local John Deere dealer, the 7-Iron deck is simply the best



in the world. To see for yourself, call 1-800-537-8233 or visit [www.deere.com](http://www.deere.com) for a dealer near you.

Circle No. 112 on Reader Inquiry Card

Nothing Runs Like a Deere®



## Associated Landscape Contractors of America

150 Eldon St., Suite 270  
Herndon VA 20170  
800/395-ALCA  
703/736-9666  
Fax: 703/736-9668  
EMail: [debraholder@alca.org](mailto:debraholder@alca.org)  
<http://www.alca.org>  
President: Steven Glover, CLP  
President Elect: Emily Thompson  
Secretary/Treasurer: Drew St. John II, CLP  
Immediate Past President: Cynthia Peterson, CCLP  
Executive Director: Debra Holder  
Directors: J.Landon Reeve, Kurt Kluznik, Gary Mangum, Ronald Kujawa, Richard J.Ott, Ronald E. Schmoyer

Certification Programs:  
Certified Landscape Professional  
(Exterior & Interior)

Certified Landscape Technician (Interior)

Certified Landscape Technician (Exterior)

### Key Events:

Feb. 6-9 ALCA Executive Forum in Las Vegas, NV

March 9-12 ALCA Student Career Days at Mississippi State University, Starkville, MS

Nov. 4-7 Landscape & Grounds Maintenance Conference, Indianapolis

## American Nursery & Landscape Association

1250 I St. NW, Suite 500  
Washington, DC 20005-3922  
202/789-2900

Fax: 202/789-1893

<http://www.anla.org>

President: Thomas Pinney Jr.

Executive Vice President: Robert J. Dolibois  
Vice President: Louis Hillenmeyer III  
Treasurer & Region 4 Director: Dale L. Bachman  
Director-at-Large: Edward S. Porter  
Region I Director: R. Wayne Mezitt  
Region III Director: Robert Orum  
Region V Director: James M. Zangger  
Region VI Director: Gary E. Briggs

### Key Events:

Jan. 20 125th Anniversary Gala, Chicago

Feb. 3-6 Management Clinic, Louisville, KY

July 13-16 2000 ANLA Convention & Executive Learning Retreat, Vancouver, BC Canada

## American Society of Landscape Architects

636 Eye St. NW  
Washington, DC 20001-3736  
202/898-2444

Fax: 202/898-1185

[www.asla.com](http://www.asla.com)

President: Janice Cervelli Schach  
Immediate Past President: Barry W. Starke,  
President Elect: Leonard J. Hopper  
Vice President/Communication: Rosheen M. Styczinski  
Vice President/Education: Patrick A. Miller  
Vice President/Information & Professional Practice: Patrick W. Caughey  
Vice President/Finance: Russell A. Adait  
Vice President/Membership: Robert A. Callans  
Vice President/Public Affairs: Paul Morris  
Laf Representative: Debra L. Mitchell

### Key Event:

Oct. 28-30 2000 ASLA Annual Meeting and Expo, St. Louis, MO

## Irrigation Association

8260 Willow Oaks Corporate Drive  
Fairfax, VA 22031  
703/573-3551

Fax: 703/573-1913

EMail: [info@irrigation.org](mailto:info@irrigation.org)

[www.irrigation.org](http://www.irrigation.org)

President: Dave Ramsey

Vice President: Rex Dixon

President-Elect: Dennis Schwieger

Treasurer: Adam Skolnik

Executive Director: Thomas H. Kimmell, CLIA  
Board of Directors: Michael E. Bousquet, Frank Busam, Mel Canterbury, Robert D. Dobson, Scott D. Knowles, Lex Michael Mason, John W. Ossa, Stuart W. Styles, Susan S. Thayer, Lynda R. Wightman

### Key Event:

Nov. 11-14 International IA Irrigation Show, Phoenix, AZ

## National Arborist Association

Route 101

P.O. Box 1094

Amherst NH 03031-1094

603/673-3311

Fax: 603/672-2613

EMail: [naa@natlarb.com](mailto:naa@natlarb.com)

<http://www.natlarb.com>

President: John R. Wright

President Elect: James C. Allard

Vice President: Mark J. Tobin

Treasurer: Tim A. Johnson

Directors: Rusty Girouard, Gregory S. Daniels, Thomas J. Golon, Dan Christie, John C. Britton, Mark Shipp

Correspondence Courses: Home Study Courses in Arboriculture

Electrical Hazard Awareness Program

### Key Events:

Feb. 15-20 Winter Management Meeting in Bermuda

Nov. 9-11 Tree Care Expo, Charlotte, NC  
Workshops throughout the year

## Professional Grounds Management Society

120 Cockeysville Road, Suite 104  
Hunt Valley MD 21031  
410/584-9754

Fax: 410/584-9756

EMail: [PGMS@aol.com](mailto:PGMS@aol.com)

[www.PGMS.org](http://www.PGMS.org)

President: Kevin O'Donnell

First Vice President: George Van Haasteren Jr./JCGM

Second Vice President: Matthew Vehr

Treasurer: Joseph Murphy

Immediate Past President: Randy Willis

Board Members: Ellen Newell, John Feliciani, Gene Pouly, Tom Dew, Chris Fay, Stephanie DeStefano, Milton "Dusty" Hallman, Todd Cochran,  
Executive Director: John Gillan

Correspondence Courses:

Certified Grounds Manager Program

CS Learning Systems Landscaping Systems through ICS, Scranton, PA

### Key Event:

Nov. 3-7 Grounds Management Conference, Indianapolis

## Professional Lawn Care Association of America

1000 Johnson Ferry Road NE, Suite C-135  
Marietta GA 30068  
770/977-5222

800/458-3466

Fax: 770/578-6071

EMail: [plcaa@atlcom.net](mailto:plcaa@atlcom.net)

<http://www.plcaa.org>

President: Gerald Grossi

President Elect: Michael Kernaghan

Vice President: Bill Hoopes

Executive Vice President: Tom Delaney

Secretary/Treasurer: Jon Cundiff

Immediate Past President: Robert Ottley

Board Members: Vincent Tummino, Gary La Scalea, Steve Russell, Doug Hague, Charles King, Louis Kobus, Dan A. Cheslock, John Bass, Paul Harder, Chuck McIntire

Correspondence Courses: Principles of Turfgrass Management

### Key Events:

Feb. 3-5 Management Conference & Golf Classic, Tampa, FL

July 24-25 Legislative Day on the Hill & Arlington National Cemetery Environment Enhancement Project in Washington, DC

Nov. 3-7 Annual Conference, Indianapolis, IN

## Sports Turf Managers Association

1375 Rolling Hills Loop  
Council Bluffs IA 51503-8552  
712/366-2669

Fax: 712/366-9119

EMail: [sportstmgr@aol.com](mailto:sportstmgr@aol.com)

<http://www.aip.com/stma>

President: Stephen Guise

President Elect: Rich Moffitt

Commercial Vice President: Bob Curry

Executive Director: Steve Trusty

Secretary: L. Murray Cook

Treasurer: Bab Patt

Directors-at-large: Tom Burns, Lynda Wightman, Bob Campbell, Timothy P. Moore, Dave Rulli, Dr. Tony Koski

Immediate Past President: Mike Schiller

### Key Events:

Jan. 12-16 STMA 11th Annual Conference & Exhibition, St. Louis, MO

## Turfgrass Producers International

1855-A Hicks Road  
Rolling Meadows, IL 60008  
800/405-TURF

Fax: 847/705-8347

EMail: [turfgrassod.org](mailto:turfgrassod.org)

President: Bryan Wood

Vice President: Earl Black

Secretary-Treasurer: Tom Keaven

Past President: Ben L. Copeland

Executive Director: Douglas H. Fender

Board of Trustees: Dale R. Burrie, Art Campbell, Stan Gardner, Mark Huggett, J. Robert Hummer, Arthur Milberger, Mike Ward

### Key Events:

Feb. 8-12 Midwinter Conference & Expo, San Antonio

July 19-21 Summer Conference and Field Days, Spokane, WA