



By the pro.

Introducing MTD Pro commercial lawn care equipment.

At MTD Pro we make equipment the pros can count on. Because we work directly with the pros to make sure our products deliver the performance they demand. Take Commercial Turf Products. This is our exclusive state-of-the-art manufacturer solely dedicated to developing equipment for the professional - a full line, including turf equipment, landscape maintenance products, wide area walk-behind mowers and the zero-turn MMZ riding mower. And take the fact that we travel to sites throughout the year. Asking questions, demonstrating products, testing prototypes, getting feedback. MTD Pro professional lawn care products are poked, prodded, used and abused not just by our engineers, but by pros in the field. Their input helps us make better products. Which help them do a better job.

Call toll free 1-877-MTD PRO1 www.mtdproducts.com

Circle No. 126 on Reader Inquiry Card

Fax: 717/236-2046
Contact: John Wanner

Lawn Services Association of Michigan
PO Box 608
New Baltimore MI 48047
810/598-7158

Massachusetts Association of Lawn Care Professionals
PO Box 533
Belmont MA 02178
617/489-4897

Nebraska Professional Lawn Care Association
5005 N 129 Ave
Lincoln NE 68164-1715
402/496-4221
Contact: Kevin M. Minino

Ohio Lawn Care Association
PO Box 14901
Columbus OH 43214
614/261-1221
Fax: 614/261-1242

Professional Lawn Care Association of America
1000 Johnson Ferry Rd NE
Ste C-135
Marietta GA 30068
800/458-3466
Fax: 770/578-6071
E-Mail: plcaa@atlcom.net
www.plcaa.org
Contact: Karen S Weber

Professional Lawn Care Association of Mid America
PO Box 419264
Kansas City MO 64141
816/561-5323
Fax: 816/561-1249

NURSERY

American Nursery & Landscape Association
1250 I St NW Ste 500
Washington DC 20005-3922
202/789-2900
Fax: 202/789-1893

www.anla.org
Contact: Robert Dolibois

Arizona Nursery Association
1430 W Broadway A 125
Tempe AZ 85282-1127
602/966-1610
Fax: 602/966-0923
E-Mail: azna@primenet.com
www.azna.org
Contact: Cheryl Goar

California Association of Nurserymen
3947 Lennane Dr Ste 150
Sacramento CA 95834
800/748-6214
Fax: 916/567-0505
E-Mail: can@earthlink.net
www.can-online.org
Contact: Elaine J Thompson

Delaware Association of Nurserymen Inc
952 Monroe Terrace
Dover DE 19904

302/677-1895
Fax: 302/677-1895
E-Mail: tucmcgloin@aol.com
Contact: Marianne McGloin

Eastern Regional Nurserymen's Association
15245 Shady Grove Rd Ste 130
Rockville MD 20850
800/376-2463
Fax: 301/990-9771
Contact: Beth Palsy

Florida Nurserymen & Growers Association
1533 Park Center Dr
Orlando FL 32835
407/295-7994
Fax: 407/295-1619
E-Mail: fnga@aol.com
www.fnga.org
Contact: Ben Bolusky

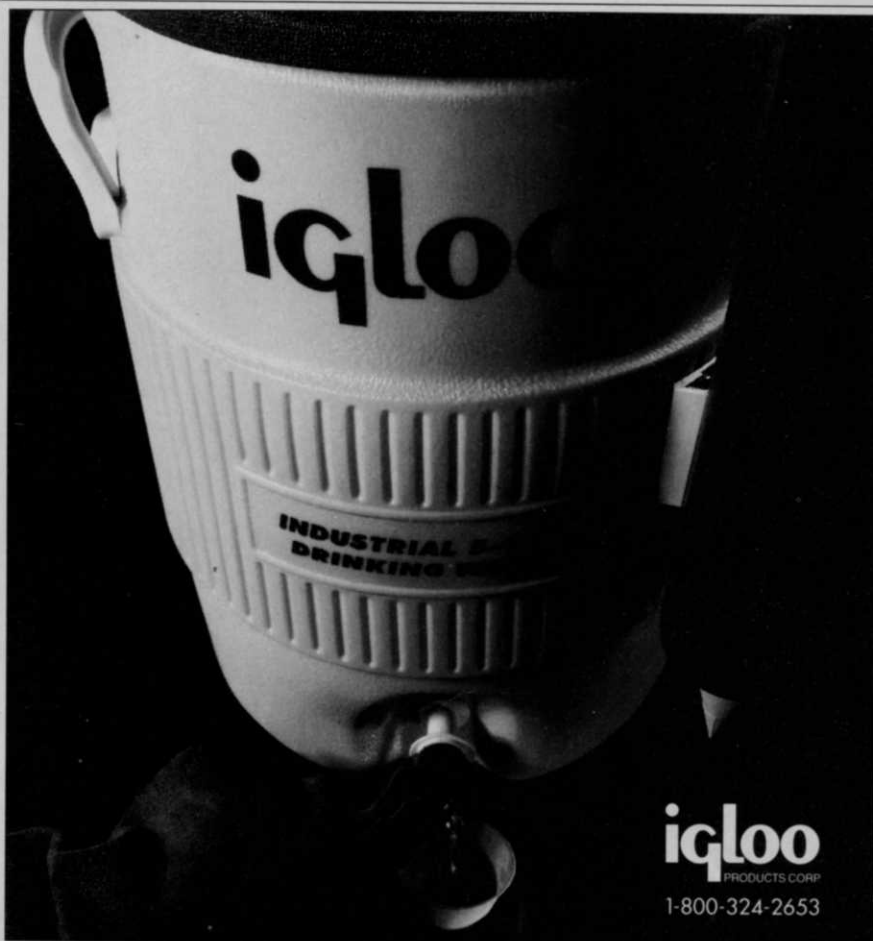
Long Island Nurserymen's Association
PO Box 117
East Moriches NY 11940
516/454-4503 (phone and fax)

Mid Atlantic Nurserymen's Association
PO Box 314
Perry Hall MD 21128
410/256-6474

Minnesota Nursery & Landscape Association
PO Box 130307
St Paul MN 55113-0003
651/633-4987
Fax: 651/633-4986
E-Mail: bobfitch@mnlandscape.org
www.mnlandscape.org
Contact: Bob Fitch

Ohio Nursery & Landscape Association
72 Dorchester Sq
Westerville OH 43081-3350
800/825-5062
Fax: 800/860-1713
E-Mail: onlagreen@aol.com
www.onla.org
Contact: Bill Stalter

Pennsylvania Landscape & Nursery Association
1707 S Cameron St
Harrisburg PA 17104
800/898-3411
Fax: 717/238-1675
E-Mail: plna@plna.com



Circle 107

www.plna.com
Contact: Patricia Norman

Southern Nurserymen's Association

1000 Johnson Ferry Rd Ste E130
Marietta GA 30068
770/973-9026
Fax: 770/973-9097
EMail: danny@mail.sna.org
www.sna.org
Contact: Danny Summers

Texas Association of Nurserymen

7730 South IH 35
Austin TX 78745-6698
800/880-0343
Fax: 512/280-3012
www.plants.org/tan
Contact: Eddy D Edmondson

Utah Nursery & Landscape Association

PO Box 526314
Salt Lake City UT 84152-6314
801/484-4426
Fax: 801/463-0026
EMail: utgreen@aol.com
www.utahgreen.org
Contact: Diane Jones

Wisconsin Nurserymen's Association

9910 W Layton Ave.
Greenfield WI 53228
414/529-4705
Fax: 414/529-4722
EMail: torii.mgmt@juno.com
www.wiso7.org
Contact: Joe Phillips

PARKS & RECREATION

Michigan Recreation & Park Association

2722 E Michigan Ave Ste 201
Lansing MI 48912-4083
517/485-9888
Fax: 517/485-7932
Contact: Mike Maisner

Minnesota Park Supervisors Association

3954 Bryant Ave S
Minneapolis MN 55409
800/362-3659
Fax: 612/825-6201
Contact: John Gurban

Missouri Park & Recreation Association

1203 Missouri Blvd
Jefferson City MO 65109-1793
573/636-3828
Fax: 573/635-7988



Put up a
wall that lets your
imagination run wild.

Anchor Wall Systems takes you beyond the barriers of traditional retaining walls into a world of design freedom where pins, clips and mortar are things of the past.

Anchor's patented pinless technology and integrated design conforms to virtually any configuration providing maintenance-free solutions for golf courses, residential sites, commercial projects, parks, towering interstate retaining walls and waterfront applications. The natural, rock face texture and warm earthtones accent any landscape environment.

Call 1-800-473-4452, for the Anchor Wall Systems Dealer nearest you.

Visit our website at www.anchorwall.com to download AnchorCAD® or to order free AnchorWall® version 2.0 design software.



ANCHOR WALL SYSTEMS

6101 Baker Road, Suite 201 Minnetonka, MN 55345-5973 • 1-800-473-4452

E-Mail: mpradave@aol.com
Contact: David W Ostlund

National Institute on Park & Grounds Management

730 W Frances St
Appleton, WI 54914-2365
920/733-2301
Fax: 930/733-2301
E-Mail: nipgm@tpo.org
Contact: Barbara Walters

National Parks & Conservation Association

1776 Massachusetts Ave NW
#200
Washington, DC 20036
800/628-7275
Fax: 202/659-0650
Email: ncpa@ncpa.org
www.ncpa.org

National Recreation & Park Association

22377 Belmont Ridge Rd
Ashburn Va 20148
800/626-6772
Fax: 703/858-0794
E-Mail: info@nrpa.org
www.nrpa.org
Contact: Kathy Spangler

Ontario Parks Association

1185 Eglinton Ave E Ste 404
Toronto ON Canada M3C 3C6
416/426-7157
Fax: 416/426-7366
E-Mail: opa@opassoc.on.ca
www.opassoc.on.ca
Contact: Kim Dunkelmann

Parks & Recreation Association Ontario

1185 Eglinton Ave E Ste 406
Toronto ON Canada M3C 3C6
416/426-7142
Fax: 416/426-7371
E-Mail: pro@osrc.com
www.prontario.org
Contact: Larry Ketcheson

Southwest Park & Recreation Training Institute

Texas Tech University Park
Administration and Landscape
Architecture Dept
PO Box 4219
Lubbock TX 79409
806/742-2011
Fax: 806/742-3881

PESTICIDE ISSUES

Alliance for Environmental Concerns

PO Box 4292
Warren NJ 07059-4292
732/563-9252
Fax: 732/560-8588

Ohio Professional Applicators for Responsible Regulation

85 E Gay St 11 Flr
Columbus OH 43215
614/221-7371
Fax: 614/221-0289
E-Mail: betts@netwalk.com
Contact: James E Betts

SEED/SOD

American Seed Trade Association

601 13th St NW Ste 570 South
Washington DC 20005-3807
202/638-3128
Fax: 202/638-3171
E-Mail: dumston@ix.netcom.com
www.amseed.com
Contact: Dean Umston

Atlantic Seedsmen Association Inc

298 E McCormack Ave
State College PA 16801
814/237-0330
Fax: 814/237-0330
E-Mail: atlanticseed@psu.edu
Contact: John E Baylor

Manhattan Ryegrass Growers Association

PO Box 250
Hubbard OR 97032
503/651-2130
Fax: 503/651-2351
Contact: Neil Reiling

Oregon Chewings Fescue & Creeping Red Fescue Commission

1193 Royvonne #11
Salem OR 97302
503/364-3346
Fax: 503/581-6819

Oregon Fine Fescue Commission

1193 Royvonne #11
Salem OR 97302
503/585-1157
Fax: 503/585-1292

E-Mail: dnlassoc@aol.com
Contact: David Nelson

Oregon Ryegrass Growers Seed Commission

PO Box 3366
Salem OR 97302
503/364-3346

Penncross Bentgrass Growers Association

PO Box 250
Hubbard OR 97032
503/651-2130
Fax: 503/651-2351
Contact: Charlotte Flowers

Sod Growers Association of Michigan

50240 Martz Rd
Belleville MI 48111
734/481-0033
Fax: 734/481-0804

Turfgrass Producers International

1855-A Hicks Rd
Rolling Meadows IL 60008
800/405-TURF
Fax: 847/705-8347
E-Mail: turf-grass@msn.com
www.turfgrassod.org
Contact: Douglas Fender

TREES

American Forests

PO Box 2000
Washington DC 20013
202/667-3300
Fax: 202/667-7751
www.amfor.org

American Society of Consulting Arborists

15245 Shady Grove Rd Ste 130
Rockville MD 20850
301/947-0483
Fax: 301/990-9771
E-Mail: asca@mgmtsol.com
Contact: Beth Pallys

Connecticut Tree Protective Association

18 Washington St
Rocky Hill CT 06067
860/257-8971

Council of Tree & Landscape Appraisers

15245 Shady Grove Rd Ste 130
Rockville MD 20850

301/947-0483
Fax: 301/990-9771
Contact: Beth Pallys

International Society of Arboriculture

P.O. Box 3129
Champagne IL 61826-3129
217/355-9411
Fax: 217/355-9516
www.ag.uiuc.edu/isa

National Arbor Day Foundation

100 Arbor Ave
Nebraska City NE 68410
402/474-5655
Fax: 402/474-0820
www.arborday.org
Contact: Gary Brienzo

National Arborist Association

PO Box 1094
Amherst NH 03031-1094
800/733-2622
Fax: 603/672-2613
Email: naa@natlarb.com
www.natlarb.com
Contact: Tim Johnson

New Jersey Shade Tree Federation

PO Box 231
New Brunswick NJ 08903-0231
732/246-3210
Fax: 732/246-3210
Contact: William J Porter

New York State Arborists

PO Box 58
Latham NY 12110
518/453-6461
Fax: 518/453-6462
www.plantamerica.com/nyarbor
Contact: Deb Goedeke

Secret Arboretum Ohio Agricultural Research & Development Center

1680 Madison Ave
Wooster OH 44691
330/263-3761
Fax: 330/263-3767
E-Mail: winkler.6@osu.edu
Contact: Sandy Winkler

TURFGRASS

Arkansas Turfgrass Association

PO Box 250270

Mycorrhizal Fungi

NATURE'S PLANT PROTECTION

More than 400 million years ago, plants evolved a symbiotic relationship with mycorrhizal fungi—a relationship that remains critical to plant health today.



Mycorrhizal fungi (fungus roots) are unique, root-inhabiting fungi that colonize plants outside (ectomycorrhizae) or inside (endomycorrhizae) fine absorbing roots to obtain essential organic chemicals. In return, the fungi extend vegetative strands (mycelia) far into the soil to extract water and essential elements and share them with their host. Mycorrhizae are able to absorb, accumulate and transfer all of the 15 major and minor mineral elements and water to plants more rapidly than roots with no mycorrhizae. Decades of research show that mycorrhizae increase the tolerance of their

plant host to drought, compaction, high soil temperatures, heavy metals, soil salinity, organic and inorganic soil toxins and extremes of soil pH. These beneficial fungi also extend life, viability, and productivity of their host root system.

How to Select Mycorrhizal Fungal Products

Commercial access to mycorrhizal fungi is due, largely, to the research begun 40 years ago by the U.S. Forest Service's Dr. Donald H. Marx. Awarded the 1991 Marcus Wallenberg Prize (considered the Nobel Prize for forestry) for his research, Dr. Marx continues his work as Chairman and Principal Scientist of PHC, Inc. The Company is the world's leading producer and supplier of mycorrhizal fungal products.

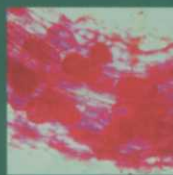
Experts worldwide agree that use of mycorrhizal fungi in plant health management will become widespread in the new millennium. However, because production of these beneficial fungi requires significant technical investment and expertise, buyers should be very selective about the products they purchase and who they purchase from. Ask these important questions before you make a product purchase:

- Q. Does the product manufacturer, packager and seller have adequate scientific expertise and technical knowledge to guarantee quality and proper use?** Growing, formulating and delivering mycorrhizal fungal inoculants require significant in-house scientific expertise. Four PhD specialists are on staff at PHC, Inc. to ensure quality control, to develop usage guidelines, and equally important, to answer customer questions.
- Q. Are you buying long-lived spores or short-lived propagules?** Many products that claim to be viable endomycorrhizal inoculants contain mostly fungal propagules in root fragments and few viable fungal spores. Published research shows the fungus in these root propagules only survive for 10 to 20 days after production. PHC, Inc. products contain a guaranteed number of quality dormant spores that are viable for a minimum of 18 months after production. PHC, Inc. conducts independent spore viability tests and plant root colonization on all of its products to ensure they work as represented.
- Q. Is the product guaranteed pathogen-free?** Since endo (VAM) spores are produced on plant roots, the potential for the unintentional propagation of fungal pathogens and nematodes with the mycorrhizal fungal inoculum is high. Random sample testing of several commercially available "me-too" products show they contained an abundance of undesirable pathogenic fungi and nematodes. All PHC Mycor™ and MycorTree™ brand products are guaranteed pest-free with the full backup of rigid laboratory Quality Control production standards and protocols.

M Y C O R R H I Z A E



Mycorrhizae:
Fungus Roots



Ash clear stained
VAM with vesicles



Produce fine
absorptive roots

What buyers need to know about commercially available mycorrhizal fungal products and their practical application.

Fungal Facts

M Y C O R R H I Z A E :

- Benefit more than 99 percent of Earth's plants
- Increase absorptive surfaces of root systems up to 700 percent
- Extend through the soil up to 30 feet away from a plant host
- Can occupy 100 times more soil volume than a non-mycorrhizal plant's entire root system
- Depress many root diseases caused by pathogenic fungi and nematodes

Mycorrhizae Types Matter:

E C T O V S . E N D O

Ectomycorrhizae: Colonize the outside of plant cells and the root to benefit conifers and hardwoods, such as beech, birch, eucalyptus, oak and willow

Endomycorrhizae: Colonize the inside of plant root cells to benefit turfgrasses, most ornamental plants, hardwoods, fruit and nut trees and shrubs



How Mycorrhizal Fungal Inoculant Products Work

Any condition that affects root growth influences mycorrhizal development. For

example, grossly over-fertilized and watered plants produce rapidly growing absorbing (white) roots that contain few available sugars, so these roots are much less susceptible to mycorrhizal fungal colonization. Also:

- Mycorrhizal fungi only colonize juvenile non-woody roots, not woody or white water roots. For best results, apply them with a root biostimulant product to encourage new root growth.
- Research has shown that soil-enriching bacteria, natural surfactants and soil-water managing gels are very effective in stimulating root fibricity (fine absorbing roots), rooting depth and mycorrhizal development.
- High light intensity and moderate soil fertility encourage mycorrhizal colonization.
- Some fungicides can have a detrimental effect on mycorrhizae, while some are beneficial. In general, insecticide and herbicide applications do not affect mycorrhizae.
- Once colonized, mycorrhizal fungi spread to new roots in new soil areas and continue to thrive as long as root growth is maintained and soil conditions are appropriate.

CONTACT PHC TECH SERVICES AT 1-800-421-9051



PLANT
HEALTH
CARE, INC.

PLANT HEALTH CARE, INC.

Plant Health Care, Inc. (PHC, Inc.) is the world technology leader in the commercial development of endo- and ectomycorrhizal fungal inoculant products, and is fast becoming a leader in beneficial bacterial technology.

1-800-421-9051

www.planthealthcare.com

Beneficial Bacteria

NATURE'S FERTILITY PARTNER

According to scientists, for every single destructive species of bacterium found on Earth, there are more than 30,000 species that are beneficial or neutral to plant and animal life. Through biotechnology, PHC scientists identify, isolate and commercially produce beneficial bacteria species to improve our environment and quality of life. A variety of bacteria species have been formulated into "plant health care" products that promote biological growth, prevent damaging foliar and soil pathogens and pests, and cleanse ponds and lakes.

Rhizobacteria

Soil bacteria decompose organic matter, including cellulose and lignin in wood, a process essential to all life on Earth. Primarily they are found in the upper 12 inches of soil where their carbon food source is most prevalent and where aeration, mineral elements, pH and temperature are more ideal. A half thimble of productive soil may contain up to 3 billion bacteria from thousands of species that carry out different activities in soils.

Beneficial Rhizobacteria, are found in the root zone of all plants (and turfgrasses). Rhizobacteria have adapted themselves to plant's absorbing roots where they get nutrients from sloughed root cells, exudates and organic matter. In return, they provide plants with specific benefits and are largely responsible for soil health.

For its products, PHC, Inc. selects soil bacteria and rhizobacteria that produce specific responses:

- **Plant-Growth Promoting Rhizobacteria** produce a variety of chemicals and natural hormones that stimulate plant growth under stress.
- **Free-Living or Non-Symbiotic Nitrogen-Fixing Bacteria** increase plant growth by fixing atmospheric nitrogen for plant use.
- **Phosphate-Solubilizing Bacteria** solubilize phosphorus for plants from insoluble mineral sources.
- **Bacteria Antagonistic to Root Pathogens** produce antibiotics or are hyperparasitic to inhibit root pathogenic organisms, such as *Pythium*, *Phytophthora* and *Rhizoctonia*.
- **Mycorrhizosphere Bacteria** improve mycorrhizal development and their function.



PHC™ BioPak™:

Dry, water soluble biofertilizer/biostimulant with multiple strains of growth-promoting, Nitrogen fixing and Phosphorus solubilizing bacteria. PHC™ BioPak™ promotes fast feeder root development, stimulates plant growth and improves nutrient availability and uptake. Also available with micronutrients.



PHC™ Complete™:

Dry, dispersible rhizosphere inoculant that contains 20 strains of microencapsulated bacteria antagonistic to root pathogens. Formulated with dry soluble yucca extract and organic biocatalysts to ensure rapid colonization of the plants' rhizosphere to minimize turf diseases and improve nutrient availability.

Insect-Toxic Bacteria

Some beneficial bacteria contain toxins that are fatal to insects but harmless to plants, animals and humans. The best known, *Bacillus thuringiensis* (Bt), have produced some of our most reliable and potent biological control measures. Bt is a common soil bacteria that produces crystal proteins and spores with insecticidal properties. Formulated into Bt bioinsecticides and then foliar-applied, these proteins/spores control a broad spectrum of caterpillar pests. The targeted pest consumes the proteins/spores, becomes sick and unable to eat, and soon dies.

Crymax® WDG bioinsecticide: The most potent Bt technology available to horticulturalists. It is twice as strong as traditional Bt products – for better, longer lasting control of caterpillar pests. It contains three different insecticidal proteins to provide broad spectrum biological control of all caterpillar pests found in ornamental trees and shrubs, including diamondback moth. Crymax® is available in a dry, water dispersible granule (WDG), so it is easy to store, handle and apply.

Cruiser™ bioinsecticide: Contains live Hb nematodes for control of Japanese beetles, masked chafers, rose chafers, flea larvae and pupae, sod webworms, chinch bugs and various weevils on turf, ornamentals and fruit crops.

Water-Cleansing Bacteria

Cloudy water, pond odor, scum and algae blooms—the most common pond maintenance complaints—are caused by excessive levels of nutrients, from the leaching and inflow of fertilizers and buildup of organic matter. These elements are food nutrients that promote the growth of algae and anaerobic bacteria. Water-cleansing bacteria, contained in high concentrations in PHC, Inc. products, biologically cleans, clarifies and deodorizes fresh water. These specialized bacteria digest ammonia, nitrates and phosphorous and degrade hydrocarbons and plant material. Without food, algae and anaerobic bacteria are kept in check and water quality improves.



PondSaver™:

Contains more than 5 billion colony-forming units of 17 different proprietary strains of dry, live bacteria per gram. Reduces clouding, sludge and unpleasant pond and lake odors.



PLANT HEALTH CARE, INC.

Plant Health Care, Inc. (PHC, Inc.) is a microbial biotechnology company specializing in the development of "plant health care" products and natural systems solutions for the commercial tree care, horticulture, turfgrass, aquatic, forestry and land reclamation industries.

Green for Life™

For more information about beneficial bacteria and mycorrhizal products, call 1-800-421-9051 to order a Green for Life guidebook and catalog of PHC, Inc. biological products.

PHC™, BioPak™, Healthy Start™, Complete™, Mycor™, MycorTree™, A Natural Systems Approach™, Green for Life™, and PondSaver™ are trademarks of PHC Royalty, Inc. Crymax® and Cruiser™ are trademarks of Ecogen, Inc. ©1998 PHC Royalty, Inc.

Little Rock AR 72225-0270
501/664-8048
Fax: 501/664-8048
E-Mail: ammgmt@mail.snider.net
Contact: Angie McSwain

Florida Turfgrass Association Inc

5858 TG Lee Blvd Ste 110
Orlando FL 32822-4408
800/882-6721
Fax: 407/856-5150
E-Mail: ftga@aol.com
www.ftga.org
Contact: Jane E Rea

Georgia Green Industry Association

PO Box 369
Epworth GA 30541
706/632-0100
Fax: 706/632-0300
E-Mail: sherryl@ggia.org
www.ggia.org
Contact: Sherry Loudermilk

Georgia Turfgrass Association/Georgia Turf-grass Foundation Trust

5198 Ross Rd
Acworth GA 30102
770/975-4123
Fax: 770/975-4044
www.turfgrass.org
Contact: Sherri Loudermilk

Hawaii Turfgrass Association

2142 Kaumualii St
Honolulu HI 96819
808/841-3305
Fax: 808/842-5711

Kansas Turfgrass Foundation

Kansas City University
2021 Throckmorton Hall
Manhattan KS 66506
785/532-6173
Fax: 785/532-6149
www.oznet.ksu.edu/dp_hfrr/turf
Contact: Steve Keeley

Kentucky Turfgrass Council

PO Box 701
Richmond KY 40476-0701
606/623-6130
Fax: 606/623-6130
Contact: Dr. Dwight G Barkley

Louisiana Turfgrass Association

Knapp Hall-LSU

Baton Rouge LA 70803
504/388-2222
Fax: 504/388-1068
E-Mail: tkoske@agctr.lsu.edu
Contact: Thomas J Koske

Maryland Turfgrass Council

Box 223
White Marsh MD 21162
800/899-7645
Fax: 410/335-0164

Massachusetts Turf & Lawn Grass Council

34 Comins Rd
Hadley MA 01035
413/549-5295
E-Mail: troll@pssci.umass.edu
Contact: Dr. Joseph Troll

Michigan Turfgrass Foundation

PO Box 80071
Lansing MI 48909
517/321-1660
Fax: 517/321-5822
www.michiganturfgrass.org

Midwest Regional Turf Foundation

Box 2285
West Lafayette IN 47996
765/494-8039
Fax: 765/496-2926
www.agry.purdue.edu/
agonomy/turf/turf.htm

Mississippi Turfgrass Association

PO Box 9555
Mississippi State MS 39762
601/325-0517
Fax: 601/325-8742
www2.msstate.edu/~csvg/
turfgrass.html

Musser International Turfgrass Foundation

PO Box 8
Sharon Center OH 44274
330/239-2383
Fax: 330/239-1390

National Turfgrass Evaluation Program

BARC-West Bldg 002 Rm 013
Beltsville MD 20705
301/504-5125
Fax: 301/504-5167
E-Mail: kmorris@asrr.arsusda.gov
http://hort.unl.edu/ntep
Contact: Kevin Morris
Nebraska Turfgrass

Foundation

PO Box 2118
Hastings NE 68902
402/463-5418
Fax: 402/463-5683
Contact: Don Ellerbee

New York Greengrass Association

PO Box 612
Latham NY 12110
518/783-1229
Fax: 518/426-8058
www.nysta.org

New York State Turfgrass Association

PO Box 612
Latham NY 12110
518/783-1229
Fax: 518/426-8058
E-Mail: nysta@capital.net
www.nysta.org
Contact: Elizabeth Seme

New York State Turf & Landscape Assn Inc

PO Box 307
Scarsdale NY 10583
914/636-2875
Fax: 914/636-2875
E-Mail: nysturf@aol.com
Contact: Michael Bellantoni

Ohio Turfgrass Foundation

PO Box 340546
Columbus OH 43235
614/760-5442
Fax: 614/760-5431
E-Mail: cindi@teammanagement.com
Contact: Cindi Smith

Pennsylvania Turfgrass Council

PO Box 1078
Lemont PA 16851-1078
814/863-3475
Fax: 814/863-3479
E-Mail: cek6@psu.edu
www.paturf.org
Contact: Christine E King

South Carolina Landscape & Turfgrass Association

305 N Kings Grant Dr
Columbia SC 29209
803/787-8930
Fax: 803/787-7639
E-Mail: age3eee@bellsouth.net
Contact: Eleanor Eillion

Southwest Turfgrass Association

NMSU
Box 30001 Dept 3Q
Las Cruces NM 88003
505/646-3405
Fax: 505/646-6041
Contact: James Fisher

Texas Turfgrass Association

1003 Howe
College Station TX 77845
800/830-8873
Fax: 409/690-1656
E-Mail: sduble@aol.com
www.texasturf.com
Contact: Shirley Duble

Turfgrass Council of North Carolina

PO Box 289
Southern Pines NC 28388-0289
910/695-1333
Fax: 910/695-1222
E-Mail: mmrtcnc@aol.com
Contact: Gene Maples

Turf Resource Center

1855-A Hicks Rd
Rolling Meadows IL 60008
800/405-8873
Fax: 847/705-8347
E-Mail: turf-grass@msn.com
www.turfgrassod.org
Contact: Douglas Fender

Virginia Turfgrass Council

PO Box 698
Fishersville VA 22939
540/942-8873
Fax: 540/943-3900
E-Mail: thevtc@cfw.com
Contact: Susan K Floyd

WILDFLOWERS

Ladybird Johnson Wildflower Center

4801 LaCrosse Ave
Austin TX 78739
512/292-4200
Fax: 512/292-4627
E-Mail: nwrc@onr.com
www.wildflower.org
Contact: F M Oxley



If you really want to keep something

It takes two fierce herbicides acting side by side to keep crabgrass, goosegrass, spurge, oxalis and other weeds from breaking into your customers' property. Team[®] Pro preemergence herbicide combines Balan[®] and Treflan[®] herbicides into the most consistent, fast-acting, long-lasting crabgrass preventer available. Team Pro protects lawns better than pendimethalin without severe staining of spreaders, shoes or landscaping.



out of a yard, unleash the Power of Two.

And Team Pro won't harm established ornamentals, turfgrass or your reputation for a good value. For information on fertilizers formulated with Team Pro, talk to your supplier. Or call us at 1-800-255-3726 or visit our web site, www.dowagro.com. Then stand back, and unleash the Power of Two. Always read and follow label directions.

 Dow AgroSciences
Team* Pro

*Trademark of Dow AgroSciences LLC

KEY ASSOCIATIONS

Associated Landscape Contractors of America

150 Eldon St Ste 270
Herndon VA 20170
800/395-ALCA
703/736-9666
Fax: 703/736-9668
EMail: debraholder@alca.org
www.alca.org

President: Cynthia Peterson
President Elect: Steven Glover
Secretary/Treasurer: Emily Thompson

Immediate Past President: Judson Griggs

Executive Director: Debra Holder

Directors: Rick Doesburg, Dale Elkins, Kurt Kluznik, Gary Mangum, Wayne Richards, Drew T. St. John, II

Certification Programs: Certified Landscape Professional (Exterior & Interior)

Certified Landscape Technician (Interior)

Certified Landscape Technician (Exterior)

Key Events:

Jan. 20-23 Interior Landscape Conference in Fort Lauderdale, FL

Feb. 20-24 ALCA Executive Forum in Rancho Mirage, CA

March 18-21 ALCA Student Career Days at the University of Kentucky, Lexington

American Nursery & Landscape Association

1250 I St NW Ste 500
Washington DC 20005-3922
202/789-2900
Fax: 202/789-1893
www.anla.org

President: Edward S. Porter
Executive Vice President: Robert J. Dolibois

Vice President: Thomas Pinney, Jr.
Treasurer: Dale Bachman
Director-at-Large: Carl J. Meyer

Key Events:

Jan. 2, 1999 Western Nursery & Landscape Association Trade Show, Kansas City, MO

Jan. 24 ONLA/CENTS Show in Columbus, OH

Feb. 4-7 1999 Management Clinic in Louisville, KY

July 24-28 1999 ANLA Convention in Philadelphia, PA

American Society of Golf Course Architects

221 N LaSalle St
Chicago IL 60601-1520
312/372-7090

Fax: 312/372-6160
EMail: asgaweb@selz.com
www.golfdesign.org

President: Robert Lohmann
Vice President: John LaFoy
Secretary: Damian Pascuzzo
Treasurer: Brian Ault
Immediate Past President: Alice O'Neal Dye
Past President: Denis Griffiths
Executive Secretary: Paul Fullmer

Golf Course Superintendents Association of America

1421 Research Park Dr
Lawrence KS 66049-3859
785/841-2240

Fax: 785/832-4449
EMail: gcsacom@gcsaa.org
www.gcsaa.org

President: George E. Renault III
Vice President: David W. Fearis
Chief Executive Officer: Steve Mona

Secretary/Treasurer: R. Scott Woodhead

Directors: David Downing, Joseph Emanuel, James Nicol, Timothy O'Neill, Samuel Snyder VII, Mark Woodward

Correspondence Courses: Emergency Planning & Community Right-to-Know

Hazard Communication

Media Relations

Personal Protective Equipment for Pesticide Applicators

Personal Stress Management

Responsible Pesticide Use in Golf Course Management

Risk Communication

Risk Management

Time Management

Underground Storage Tank Monitoring & Record keeping

Key Events: Feb. 8-14 70th International Golf Course Conference Show in Orlando, FL

National Arborist Association

Route 101
PO Box 1094
Amherst NH 03031-1094

603/673-3311
Fax: 603/672-2613
EMail: naa@natlarb.com

www.natlarb.com
President: Paul Wolfe II
President Elect: John R. Wright
Vice President: James C. Allard
Treasurer: Mark Tobin
Directors: Tim Johnson, Rusty Girouard, Vince Newendorp, Gregory S. Daniels, Thomas J. Golon, Dan Christie

Correspondence Courses: Home Study Courses in Arboriculture

Electrical Hazard Awareness Program

Key Events:

Jan. 26-31 Winter Management Meeting in Cancun

Workshops throughout the year

Professional Grounds Management Society

120 Cockeysville Rd Ste 104
Hunt Valley MD 21031
410/584-9754

Fax: 410/584-9756
EMail: PGMS@aol.com
www.pgms.org

President: Randy Willis, CGM
First Vice President: Kevin O'Donnell

Second Vice President: George Van Haasteren, Jr./CGM

Treasurer: Matthew Vehr
Immediate Past President: Tom Riccardi

Executive Director: John Gillan

Correspondence Courses: Certified Grounds Manager Program

CS Learning Systems Landscaping Systems through CS, Scranton, PA

Professional Lawn Care Association of America

1000 Johnson Ferry Rd NE Ste C-135

Marietta GA 30068
770/977-5222

Fax: 770/578-6071
EMail: plcaa@atcom.net
http://www.plcaa.org

President: Bob Ottley
President Elect: Gerald Grossi
Vice President: Michael Kernaghan

Executive Vice President: Tom Delaney

Secretary/Treasurer: Gene Pool
Immediate Past President: Larry Messina

Correspondence Courses: Principles of Turfgrass Management

Key Events:

Feb. 4-6 Management Conference & Golf Classic in Orlando, FL

July 19-20 Legislative Day on the Hill & Arlington National Cemetery Environment Enhancement Project in Washington, DC

Sports Turf Managers Association

1375 Rolling Hills Loop
Council Bluffs IA 51503-8552
712/366-2669

Fax: 712/366-9119
EMail: sportstmgr@aol.com
http://www.aip.com/stma

President: Stephen Guise
President Elect: Rich Moffitt
Commercial Vice President: Bob Curry

Executive Director: Steve Trusty
Secretary: L. Murray Cook
Treasurer: Bob Patt

Directors-at-large: Tom Burns, Mary Owen, Lynda Wightman, Bob Campbell, Timothy P. Moore
Immediate Past President: Mike Schiller

Key Events:

Jan. 13-17 STMA 10th Annual Conference & Exhibition in Mesa, AZ