

CRABGRASS

TAKE CONTROL WITH PENDIMETHALIN.

| CRABGRASS CONTROL | | | |
|---------------------|-------------------|-----------|---------|
| PRODUCT | Rate (lb ai/A) | % Control | |
| | | 97 DAT | 129 DAT |
| PENDIMETHALIN 60WDG | 3.0 | 97 | 97 |
| PENDIMETHALIN 60WDG | 1.5+1.5 | 98 | 98 |
| BARRICADE 65WG* | 0.75 | 100 | 100 |
| DIMENSION 1EC* | 0.5 | 99 | 99 |
| TEAM .87 FG* | 1.5+1.5 | 88 | 82 |

Ohio State University 1996

If crabgrass is a growing problem on your golf course, you're not using the right herbicide.

What you need is Pendimethalin.

No other preemergent offers a broader spectrum of control. Fact is, this high-performance herbicide

effectively controls crabgrass, most annual grassy weeds and many annual broadleaf weeds.

And Pendimethalin has excellent turf tolerance. University and field research studies have shown that Pendimethalin provides consistent, superior weed control—yet offers tremendous tolerance to warm- and cool-season turfgrasses.

Here's how it works: After Pendimethalin makes

| CRABGRASS CONTROL | | | |
|---------------------|-------------------|-----------|---------|
| PRODUCT | Rate (lb ai/A) | % Control | |
| | | 84 DAT | 154 DAT |
| PENDIMETHALIN 60WDG | 3.0 | 100 | 93 |
| PENDIMETHALIN 60WDG | 1.5+1.5 | 100 | 99 |
| BARRICADE 65WG* | 0.75 | 100 | 95 |
| DIMENSION 1EC* | 0.5 | 100 | 86 |
| RONSTAR 2G* | 2+2 | 97 | 24 |

Virginia Polytechnic Institute & State University 1996

PENDIMETHALIN

CRABGRASS?

contact with the germinating weed seed, it disrupts the seed's biochemical processes, which makes the weed seed stop growing—and start dying—before emerging.

What's more, Pendimethalin works hard—and long. Through the entire season. That's because its low volatility and slow decomposition characteristics keep it active in the soil longer. Pendimethalin also makes your life easier. You have the flexibility to spread it on as a dry granule,

| CRABGRASS CONTROL | | |
|---------------------|------|----------------------|
| PRODUCT | Rate | % Control 120 DAT |
| PENDIMETHALIN 60WDG | 1.5 | 97 |
| BARRICADE 65WG* | .48 | 92 |
| DIMENSION 1EC* | .38 | 95 |
| RONSTAR 2G* | 3 | 92 |

Penn State University 1996

alone, or in combination with fertilizer products. Or you can use the sprayable formulations, available as a 3.3 EC, 60 WDG and 60WP.

No wonder professional turf managers have made Pendimethalin the #1 preemergent herbicide.

So take control of your turf—and your reputation. Use Pendimethalin herbicide to control crabgrass and more. Because the only thing you should see growing like a weed on your golf course is beautiful grass. Call now for more information or for the distributor nearest you.

1-800-545-9525

extension 1250A

PENDIMETHALIN.

T
A
K
E
C
O
N
T
R
O
L



INSIDE

35th
ANNIVERSARY

ON THE COVER: OUR 420 BACK ISSUES ARE REPRESENTED IN ONE BIG STACK, AS WE GIVE YOU A HISTORY OF THE GREEN INDUSTRY, IN THIS OUR 35TH YEAR. COVER PHOTO BY JERRY MANN.

COLUMNS

- 6 OPENING SHOTS
- 10 ASK THE EXPERT

DEPARTMENTS

- 11 LETTERS
- 14 HOT TOPICS
- 17 TALKBACK
- 38 EVENTS
- 39 SUPPLIERS CORNER
- 40 PRODUCTS
- 46 AD INDEX
- 47 CLASSIFIED
- 50 GRAB BAG

THE VOICE OF THE GREEN INDUSTRY

LANDSCAPE management

FEATURES

- 19 **LOOKING BACK AT 35 YEARS**
In this retrospective on Green Industry growth, representatives from leading suppliers give a history of some of the products that made it off the drawing board.

- 21 **THE 'TIMELINE'**
1962-1997: Here are some of the many memorable moments we've covered for you over the years.

- 30 **RESEARCH MILESTONES**
Three guest researchers review some of the ideas and technological breakthroughs that have helped the Green Industry grow.
*DRS. HARRY NIEMCZYK;
ARDEN BALTENSPERGER;
COLEMAN WARD*

- 33 **MORE VARIETY IN TREE CARE**
The Davey Tree Expert Co. provides us with a look at how tree care has climbed higher.

- 40 **INDUSTRY GROWS THROUGH SENSE AND SCIENCE**
Improved plant and turfgrass varieties and a better understanding of the Green Industry's duty to society have led to industry growth.
DR. ELIOT C. ROBERTS

[TIMELINE]

1962
1972
1974
1977
1981
1983
1987
1990
1997
19



LANDSCAPE MANAGEMENT (ISSN 0894-1254) is published monthly by Advanstar Communications, Inc. Corporate, editorial and advertising offices: 7500 Old Oak Blvd., Cleveland, OH 44130. Accounting, advertising production and circulation offices: 131 West First St., Duluth, MN 55802.

Subscription rates: one year, \$39, two years \$58 (U.S.); one year \$66, two years \$99 (Canada and Mexico); one year \$130, two years \$195 (all other countries). For air mail delivery, include an additional \$70 per order annually. Current issue single copies (pre-paid only): \$4 (U.S.); \$7 (Canada and Mexico); \$12 (elsewhere); add \$3.50 per order for shipping and handling. Back issues, if available, \$10 (U.S.); \$14 (Canada and Mexico); \$20 (other countries); add \$3.50 per order for shipping and handling (pre-paid orders only). **To subscribe,** call (218) 723-9477; fax: (218) 723-9437.

Office of publication: Advanstar Communications, Inc., 131 W. First St., Duluth, MN 55802. Periodicals postage paid at Duluth, MN 55806 and additional mailing offices.

Copyright ©1997 by Advanstar Communications, Inc. All rights reserved. No part of this publication may be reproduced or transmitted in any form or by any means, electronic or mechanical, including photocopying, recording, or any information storage and retrieval system, without permission in writing from Advanstar Marketing Services, Attn: Permissions, 7500 Old Oak Blvd., Cleveland, OH 44130 or phone (800) 225-4569 x742. Authorization to photocopy items for internal or personal use, or the internal or personal use of specific clients, is granted by Advanstar Communications for libraries and other users registered with the Copyright Clearance Center.



Canadian G.S.T. Number: R-124213133, IPM number: 841919

POSTMASTER: Send address changes to Landscape Management, P.O. Box 6198, Duluth, MN 55806.

BPA
INTERNATIONAL





Move to Kubota Country

Move to Kubota country and you'll find versatility, durability and operator comfort. The Kubota B-Series (13 to 18 PTO horsepower) tractors are compact to fit in tight places and powerful to get lots of jobs done. Kubota performance matched implements include rotary tillers, front loaders, mid and rear mount mowers, boxscrapers and snowblower.

Need more power? Move up to the innovative Grand L-Series (25 to 37 PTO horsepower). Hydrostatic steering, shuttle transmission with shift-on-the-go provides ease of operation. Kubota's exclusive optional Glideshift transmission has clutchless operation through all eight speeds, forward and



reverse. These tractors are smooth and quiet, with Kubota's E-TVCS engine which ensures clean emissions while providing high torque rise. Get one with an integral cab with heat and air-

conditioning for year 'round comfort.

Visit your Kubota dealer and find out how to make your move - to Kubota country!



For more information, please write to:

Kubota®

KUBOTA TRACTOR CORPORATION

P.O. Box 2992, Dept. LM

Torrance, CA 90509-2992

or call Toll Free 1-888-4 KUBOTA ext. 403

(1-800-458-2682 ext. 403)

Financing available through Kubota Credit Corporation





At Echo, we've been giving landscaping professionals exactly what they need for over twenty-five years: superior outdoor power equipment that more than performs...day after day after bumping, jostling, banging, hard-working day.

The result? Power equipment that exceeds professional demands for quality, durability and dependability. Echo Pro Performance. Built by the team that knows what professionals need. Maybe that's why more landscaping professionals choose Echo than any other brand of outdoor power equipment. For more information on Echo Pro Performance products call 1-800-432-ECHO (3246).

THE POWER TO BREAK THE SOUND BARRIER.

Power blowers that deliver maximum performance with minimum sound.

That's Echo Pro Performance. Like our revolutionary Quiet 1™ Power Blower.

The ideal blower for use in locations where sound levels are an issue. At only 65 dB(A), it's the quietest backpack blower in the industry. And of course, it's powered by our legendary, world-class, two-stroke engine. Just what you would expect from the company that invented the power blower.*



* Per ANSI B175.2-1990 at wide open throttle

ECHO®

The Pro Performance Team

It is an honor to present this 35th Anniversary Issue to our many loyal and satisfied readers.

For the past 35 years, Green Industry professionals have walked a path of progress, and along the way have reached many milestones of achievement and growth.

As we began to review that history, we found that the people in the forefront of those developments were determined, well-focused in their efforts, and fully aware of the potential for the industry to grow.

It's very likely what they felt during the initial days of the automobile or fast-food industries.

Opportunity, discovery, new ideas; a vast wilderness just waiting to be charted and peopled.

The changes were gradual, both in the way the industry did its thing and the way this magazine presented news and feature stories. Agricultural techniques and products were modified and applied to the growing specialty market. Science picked up speed as the years went by, and

galloped into the 80s with growth regulators and vastly improved control products to replace some of the much-besieged old standby products.

Associations such as ALCA and PLCAA were formed to serve the educational/professional needs of service providers, and as a bonus perk, manufacturers were directed to a target audience for products. Publishing advancements gave WEEDS TREES & TURF, spin-off pub Lawn Care Industry and Landscape Management more verve and splash. (Finally, turfgrass photos in living color!)

We're thankful for the chance to have been

there for our readers and advertisers the whole way. From the first

days of WEEDS, TREES & TURF, our mission has been to give you a combination of useful information, current news and technical articles that will help you run your business, golf course operation or athletic field crew better, safer, more efficient and more profitably.

We thank the following people who helped us fill this issue: Dr. Arden Baltensperger, Seeds West; Dr. Joseph Beditz, NGF; John B. Calsin, Jr.; The John Deere Co.; Doug Fender, TPI; Paul Fullmer, ASGCA; John Gillan, PGMS; James E. Guyette; Mike Heitman, Kubota Tractor Corporation; Dr. Michael Hurdzan; Allen James, RISE; Dr. Bill Knoop; Dr. Kent Kurtz, Cal Poly Pomona; Don Maske, AgrEvo Environmental Health; Eugene Mayer, O.M. Scotts; Paul McGinnis, GCSAA; Dr. Harry Niemczyk, OSU; Dr. Eliot Roberts; Tony Saiia, Jacobsen; Joe Santangelo, Bunton; Jim Snow, USGA; Dick Tegtmeyer, Encore; Ruth Thaler-Carter; Steve and Suz Trusty, STMA; Polly Wade, Davey Tree Expert Co.; Dr. Coleman Ward, Auburn University; Karen Weber, PLCAA; Bruce Wilson, ECI.

I thank our publisher, John Payne; managing editor Ron Hall; and graphics designer Lisa Bodnar, for their support and award-winning contributions to this issue, and this editorial year.

Thanks to all in the Green Industry who have given us the people, events and products, the problems and solutions to report about for these 35 years. To our past editors—James Nelson (who also started the magazine); Charles Webb; Arthur Edwards; Gene Inglesby; James Sample; Donald Miller; Gail Hogan; Bruce Shank; and Jerry Roche—and their respective editorial staffs, a very big 'thank you' for the obvious editorial integrity upheld during their tenures. **LM**

LANDSCAPE MANAGEMENT

LM: name change reflects overall appeal.

History worth repeating



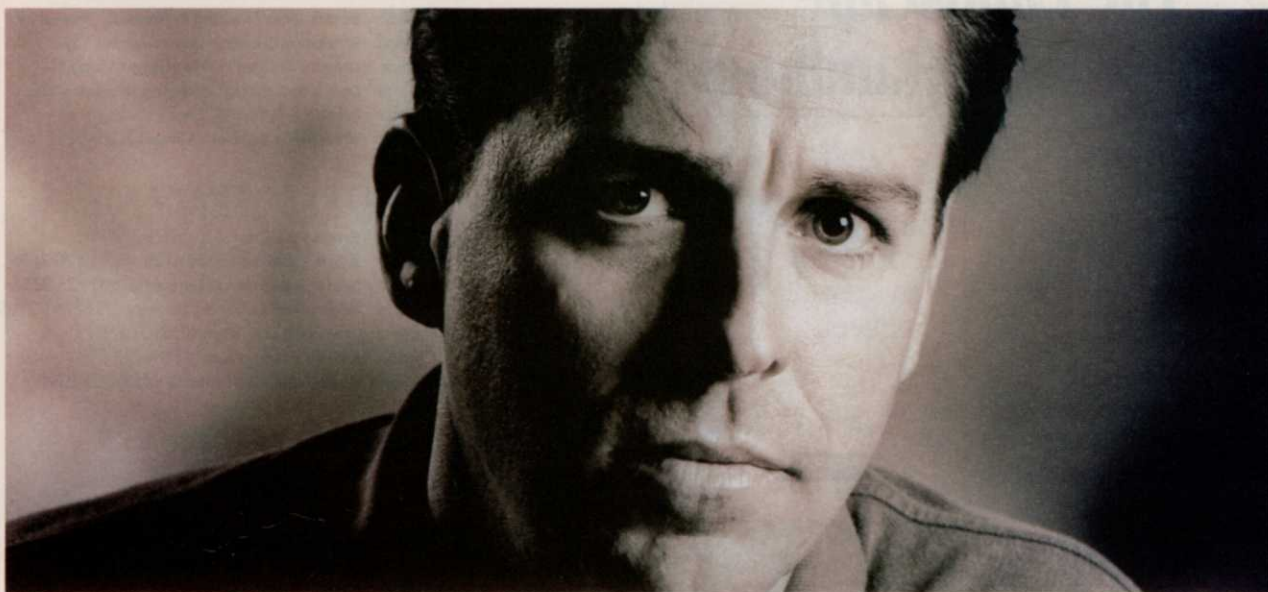
Terry McIver

TERRY MCIVER
Editor-in-Chief

LAWN CARE INDUSTRY

LCI: popular spin-off for lawn care market.

“It takes more than good products to get my job done right.”



“I don't need someone who's going to sell me a product and walk away. What I need is someone with the energy, know-how and resources to actually help me get the most out of the products I buy. Someone that will work with me to figure out what needs to be done – and the best way to do it. For me, that's Terra. They've got the products I need, when I need them. Turf seed. Fertilizers. Pesticides. All of the major brands,

including their own line of Terra Professional Products. And I can count on them for the kind of product information, agronomic advice and technical support that I can really use. Terra makes my job easier – my life simpler. One call is all it takes. I know I'll have the product I want and the answer I need.”

Working with you.



Terra Industries Inc.
P.O. Box 6000
Sioux City, Iowa 51102
1-800-831-1002
www.terraindustries.com

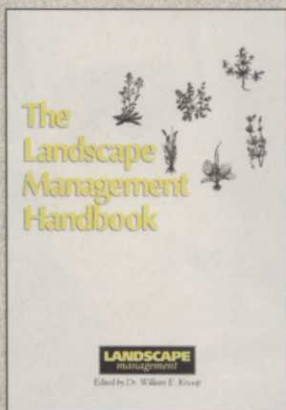


new Publication!

This new single-source reference provides the most current and comprehensive information on the basics of turfgrass and landscape management available today!

The Landscape Management Handbook

edited by
William E. Knoop
125 pages, softcover
Item #LSMB830
\$34⁹⁵



- ✔ Provides an overall understanding of turf and landscape care and management and covers all the basics of the green industry
- ✔ Covers all the topics both golf course superintendents and students of turfgrass and landscape management need to know about
- ✔ Combines practical information with the tried and true basics of management to provide a single, practical, affordable and up-to-date text
- ✔ Features detailed information, charts, diagrams, figures and tables to illustrate key information points

The Landscape Management Handbook provides a unique, single-source reference of comprehensive information on a variety of turf and landscape topics. It's an ideal handbook for golf course and lawn care superintendents and crew members, and is also appropriate for schools that teach basic turf and landscape management.

Call 1-800-598-6008

Fax: 218-723-9146

Outside the U.S. 218-723-9180

ADVANSTAR MARKETING SERVICES
Customer Service Dept. • 131 W. 1st St., Duluth, MN 55802

Shipping/Tax: UPS—add \$5 per order, plus \$1 per additional book. International, Hawaii, Alaska, Canada and expedited shipments—call for rates. Residents of CA, CT, GA, IL, MN, NJ, NY, OH and TX must add sales tax. Price subject to change. CODE: 950071

LANDSCAPE management

EDITORIAL STAFF

Terence McIver **Editor-in-Chief** (216) 891-2709
E-mail: tmciver@advanstar.com
Ron Hall **Managing Editor** (216) 891-2636
E-mail: rhall@advanstar.com
Dr. Bill Knoop **Technical Editor** (903) 860-2410
E-mail: knoop@mt-vernon.com
Vernon Henry **Group Editor** (216) 826-2829
Lisa Lehman **Art Director** (216) 891-2785
Lisa Bodnar **Graphic Designer** (216) 891-3101

READER ADVISORY PANEL

Jerry Coldiron **Boone Links / Lassing Pointe G.C.** Florence, Ky.
Corey Eastwood **Stockdale Country Club** Bakersfield, Calif.
Mike Guthrie **Ground Control Landscaping** Orlando, Fla.
Larry Iorii **Down to Earth Landscaping** Wilmington, Del.
Pat Nibler **ProGrass** Wilsonville, Ore.
David Mellor **Milwaukee Brewers** Milwaukee, Wisc.

BUSINESS STAFF

John D. Payne **Group Publisher** (216) 891-2786
Leslie Montgomery **Administrative Coordinator** (216) 826-2856
Linda O'Hara **Senior Production Manager** (218) 723-9281
Karen Laszlo **Controller/Marketing Director** (216) 891-2705
Debi Harmer **Production Director** (218) 723-9325
Karen Edgerton **Circulation Manager** (218) 723-9280
Lynn Viele **Green Book Coordinator** (218) 723-9393

ADVERTISING OFFICES

Headquarters 7500 Old Oak Blvd.
Cleveland, OH 44130-3369
(216) 243-8100 Fax: (216) 891-2675
John D. Payne **Group Publisher** (216) 891-2786
E-mail: jpayne@advanstar.com
Patrick Toal **Regional Manager**
(904) 280-4205 Fax: (904) 280-2122
E-mail: ptoal@advanstar.com
Tom Galligan **National Sales Manager**
3901 52nd Ave.
Kenosha, WI 53144-1830
(414) 653-9523 Fax: (414) 653-9524
E-mail: tgalligan@advanstar.com
John Kiesewetter **Western Sales Manager**
859 Willamette St.
Eugene, OR 97401
(541) 461-0022 Fax: (541) 461-0044
E-mail: jkiesewetter@advanstar.com
Denise Zappala **Classified / Market Showcase** (216) 891-3162

MARKETING SERVICES

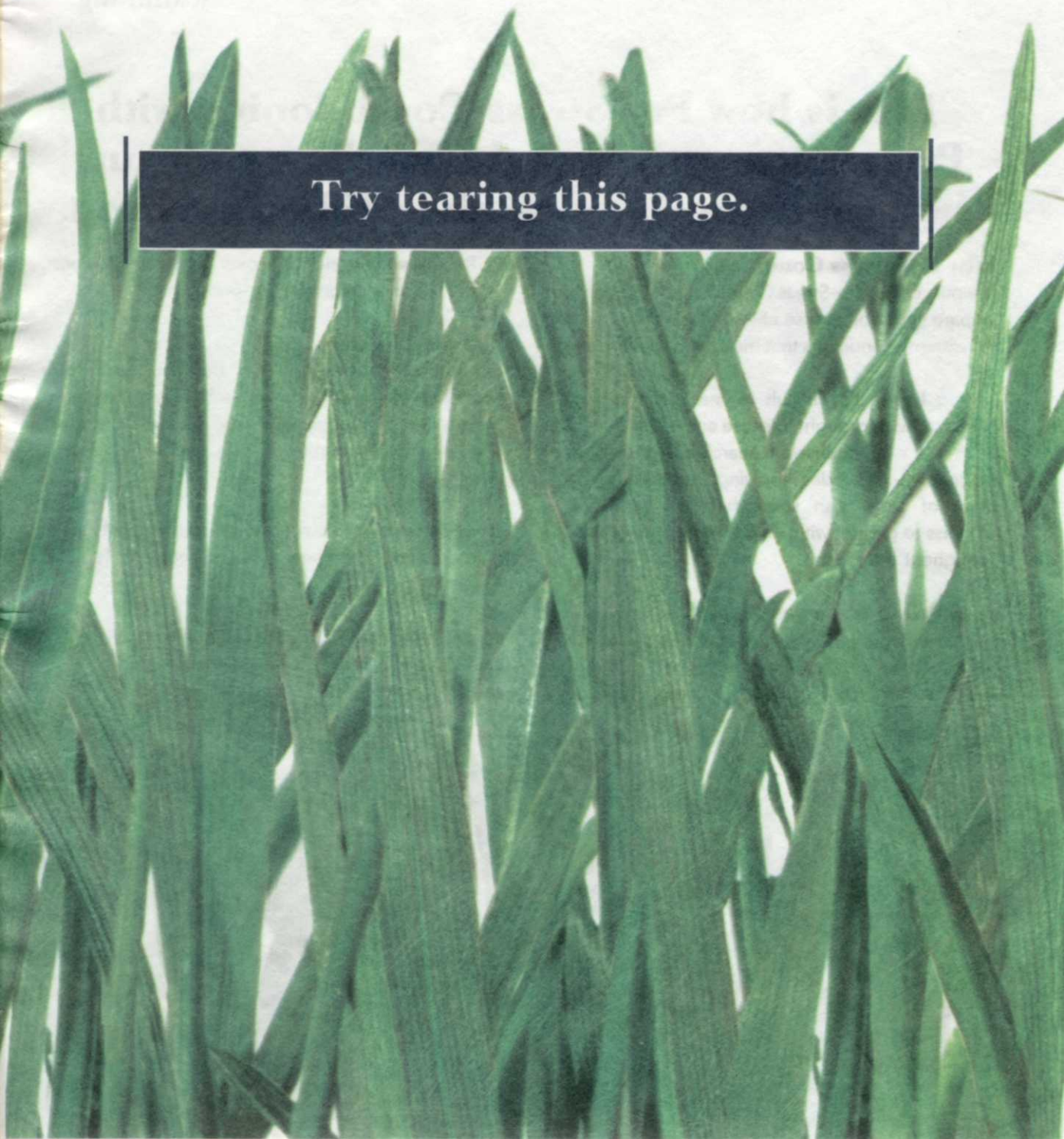
Marcie Nagy **Reprints (100 minimum)** (216) 891-2744
Mike Balzano **Circulation List Rental** (800) 225-4569, ext. 697
Advanstar Marketing **Microfiche/film Copies** (800) 225-4569, ext. 839
Chris Baxter **Subscriber/Customer Service** (218) 723-9477
Tammy Lillo **International Licensing** (218) 723-9518
Books, directories, back issues, photocopies
(800) 598-6008; (218) 723-9180



Chairman and Chief Executive Officer Robert L. Krakoff
Vice Chairman James M. Alic
VP, Business Development Skip Farber
VP/Finance, CFO and Secretary David W. Montgomery
VP, Strategic Planning Emma T. Lewis
Executive Vice Presidents Kevin J. Condon, William J. Cooke,
Alexander S. DeBarr, Brian Langille,
Glenn A. Rogers
Treasurer & Controller Adele D. Hartwick

**There's a simple way to
understand the benefits of using Primo[®]
for Pre-Stress Conditioning
on your golf course.**

Try tearing this page.





Award®

Banner® MAXX®

Barricade®

Sentinel®

Subdue® MAXX®

Primo®



**For Pre-Stress
Conditioning.**

This is how Pre-Stress Conditioning with Primo strengthens and beautifies your turf before the onset of another difficult season.

Why Pre-Stress Conditioning?

The purpose of Pre-Stress Conditioning is to help you prepare your golf course ahead of time to cope with the extreme conditions that make up a typical season.

As you know, it's difficult to manage the harmful effects of heat, drought, disease and traffic once they occur. But now extensive research has proven that a program that includes applying Primo prior to the onset of stress can strengthen the structure of turfgrass to greater withstand these ongoing stresses throughout the season.

How Primo Achieves Remarkable Results.

The advantage of Primo versus other plant growth regulators is that it only targets the part of the plant which inhibits vertical growth. So Primo, unlike other

PGR's, still enables rich turf color, bigger root systems, lateral stems and root mass development.

The End Results.

On turf treated with Primo, the end result is a healthier, more durable blade with a higher tolerance to extreme elements. This new, stronger grass will also be more disease resistant and have a faster divot-recovery time.

And essentially, a healthier, stress-resistant turf means a more beautiful, better playing golf course all season long.

To start your Primo Pre-Stress Conditioning Program, call 800 395 - TURF for the name of your Novartis sales representative or your nearest Novartis distributor.

LANDSCAPE management

A proud supporter of these green industry professional organizations:



Associated Landscape Contractors of America
150 Elden Street, Suite 270, Herndon, VA 20170
(703) 736-9666



**American Association of Nurserymen
(National Landscape Association)**
1250 I St. NW, Suite 500, Washington, DC 20005
(202) 789-2900



Golf Course Superintendents Assn. of America
1421 Research Park Dr.
Lawrence, KS 66049-3859
(913) 841-2240



**Independent Turf and Ornamental
Distributors Association**
1217 Wayburn
Grosse Pointe Park, MI 48230
(313) 331-7739

International Turfgrass Society
Crop & Soil Environmental Sciences, VPI-SU,
Blacksburg, VA 24061-0403
(561) 996-3062



National Arborist Association
The Meeting Place Mall, P.O. Box 1094,
Amherst, NH 03031-1094
(603) 673-3311



National Golf Foundation
1150 South U.S. Highway One, Jupiter, FL 33477
(407) 744-6006



Ohio Turfgrass Foundation
P.O. Box 14824, Columbus, OH 43214
(614) 261-6750

The Outdoor Power Equipment Institute
341 South Patrick St.
Old Town Alexandria, Va. 22314
(703) 549-7600



Professional Grounds Management Society
120 Cockeysville Rd., Suite 104,
Hunt Valley, MD 21031
(410) 584-9754



Professional Lawn Care Association of America
1000 Johnson Ferry Rd., NE, Suite C-135,
Marietta, GA 30068-2112
(770) 977-5222



Responsible Industry for a Sound Environment
1156 15th St. NW, Suite 400,
Washington, DC 20005
(202) 872-3860



Sports Turf Managers Association
1375 Rolling Hills Loop, Council Bluffs, IA 51503-8552
(712) 366-2669; (800) 323-3875



Turf and Ornamental Communicators Association
P.O. Box 156, New Prague, MN 56071
(612) 758-5811

PLCAA— GROWING LEADERS FOR SUCCESS

The Professional Lawn Care Association of America is in the business of "Growing Leaders." Growing your career, your company and your industry. That's our mission. From all parts of the United States, Canada and around the world, PLCAA members are dedicated lawn and landscape professionals, grounds managers, industry suppliers, and students committed to professionalism and success.

Invest in your success, join PLCAA today! As a member, you can take advantage of:

- > Year-Round Business, Legal and Technical Advice
- > 1-800 Resource Hotline & Web Site
- > Comprehensive Benefits Package Including Insurance & Retirement Planning
- > Tools to Promote Your Role as an Environmental Steward
- > Discounts on Educational Products, Conferences & Workshops
- > Discounts on a University-Directed Industry Certification Program
- > Legislative Support and Updates on the Issues
- > Subscriptions to Informative Publications
- > Discounts on PLCAA's Operating Efficiency Study
- > Public Awareness Campaigns to Spread the Good Word About Turf
- > Discounts on Green Industry Expo Booth Space for Suppliers
- > Exclusive Use of the Symbol of Good Practice Logo

"We continue our membership in PLCAA to take advantage of the many benefits. Strength in legislative affairs at the local and national levels, and specialists on staff who are a phone call away lead the list. 'Together Everyone Accomplishes More (TEAM)' through PLCAA."

Tom Tolkacz
Swingle Tree Company
Denver, Colorado

"PLCAA keeps our company sharp, which translates into efficiency. The many benefits we receive do trickle down to the bottom line. We belong to many associations, and PLCAA is truly the leader in understanding and servicing its members."

Michael Kemaghan
Weed Man
Mississauga, Ontario
Canada



Visit PLCAA's
Web Site:
www.plcaa.org

YES! Help me invest in my success.
Send me information on PLCAA.

Name _____
Company _____
Address _____
City _____ State/Country _____ Zip _____
Phone _____ FAX _____
E-Mail _____

Clip & send this coupon to:
PLCAA, 1000 Johnson Ferry Road, NE, Suite C-135, Marietta, GA 30068-2112
FAX: (770) 578-6071; PHONE: (800) 458-1466/(770) 977-5222; E-Mail: plcaa@alcom.net

INFORM ♦ INTRODUCE ♦ INFLUENCE ♦ INSTRUCT

REPRINTS

Reprints of *Landscape Management* articles, advertisements, news items or special announcements are available through Advanstar Marketing Services. Customized to meet your specific needs, reprints are highly effective when you use them to:

- Develop direct-mail campaigns
- Provide product/service literature
- Create trade show distribution materials
- Present information at conferences and seminars
- Train and educate key personnel, new hires
- Enhance press kits
- Compile reference materials
- Track trends and emerging technologies

ARTICLES
NEWS ITEMS
ADVERTISEMENTS

**LANDSCAPE
management**

ADVANSTAR MARKETING SERVICES
1-800-736-3665
216-891-2744
FAX: 216-891-2740

Will pesticides harm horses' tummies?

Our company maintains a 60-acre equestrian complex. The manager of the complex insists that all landscape chemicals are harmful to a horse's digestive system, and therefore none can be used. We have to trim miles of fence mechanically. Gravel drives are ill-defined due to weed and grass encroachment. Can you suggest any "horse safe" herbicides, insecticides and fertilizers?

—SOUTH CAROLINA

To manage the weeds, consider the following options. Based on the reports and literature in the scientific community, I disagree with your complex manager's statement that "all landscape chemicals are harmful to a horse's digestive system."

There are a number of products that can be used in pasture areas. The following information is my opinion. Please refer to the specific product labels and Material Safety Data Sheets before using.

One herbicide you may want to use is Scythe. This can be used around fence rows or gravel drives. Scythe is a fatty acid chemistry herbicide. It is a soap-based, non-selective herbicide. Scythe is quick acting, and the treated vegetation will discolor within a couple of hours. Do not walk on treated areas. If Scythe gets on your shoes, it will affect the areas in which you walk. Make sure to provide good coverage of the target vegetation to be managed. The

drawback with this product is that it will manage only those plants or plant parts it comes in contact with. Also, some weeds may resprout after a few days.

Repeat applications may be needed.

For a traditional herbicide program, consider using non-selective herbicide products such as Roundup or Finale. These postemergent herbicides can help manage whatever weeds are present at the time of treatment. Repeat applications may be needed to help manage some of the weeds. After treatments are made, be careful not to track the product to other areas.

For selective management of broadleaf weeds in pasture areas, your best option is to use a postemergent herbicide called Remedy. DowElanco representatives indicated that this product is registered in South Carolina for treating weeds in pasture areas. Its active ingredient is Trichlopyr. The same active ingredient is in other herbicides, such as Garlon and Confront, which you may be familiar with.

Regarding your "horse safe" products, know this: most pesticides are put through more than 100 tests to determine possible risks to plants and animals. These products must also be evaluated further by university scientists and other private practitioners. Generally, it may take seven to more than 10 years to register and approve use of a pesticide. For further details, contact the manufacturing companies.

Okay to inject different product three years later?

We injected some elm trees with Arbotect three years ago. Can we now inject with Alamo for Dutch elm disease management? If we find the sites of original injections, can we inject now at the same locations?

—MINNESOTA

I do not anticipate you will have any problem in switching the treatment products. After three years, the presence of Arbotect would be insignificant.

Arbotect fungicide has been the standard treatment for Dutch elm disease by many arborists in the past. In recent years, Alamo is being used for Dutch elm disease management.

If you are not familiar with the Arbotect or Alamo fungicide products and their injection practices, consult your Novartis Company representatives to obtain additional information. Review the product labels, Material Safety Data Sheets and, particularly, the injection methodology to obtain good results.

It is a good idea to inject the Alamo into a new spot on the tree. Make sure injections were made on the rootflare. Where possible, avoid injecting in the valley or recessed areas of the rootflare. **LM**



BALAKRISHNA RAO

Manager of Research and
Technical Development
for the Davey Tree
Expert Co.
Kent, Ohio

SEND YOUR QUESTIONS TO:

"Ask the Expert"
Landscape Management
7500 Old Oak Blvd.
Cleveland, OH 44130

Please allow two to three months for an answer to appear in the magazine.