

When you're ready to streamline your operation – remember

# One Grasshopper... One Operator... Your Most Productive Crew.

- ◆ Eliminate the equipment needed for most secondary trimming. Zero-radius maneuverability, outfront reachability and timesaving trimability combine to allow you to mow square corners, trim flush along walls and fences and reach out and under objects. Smooth continuous direction control means no wasted motion.
- ◆ Bag, discharge or mulch with the same deck using the Combo Mulching™ Deck\* to achieve superior results in varying conditions without changing decks. Quik-D-Tatch Vac® Collection Systems, full deck flotation options are available.
- ◆ Change to all-season attachments in minutes without tools with the Quik-D-Tatch® Mounting System\*. Aerator, bed shaper, dethatchers, angle dozer blades, rotary brooms, V-snow plow and snowthrowers.
- ◆ Mow all day with little fatigue thanks to built-in comfort features including an Iso-mounted seat.
- ◆ Durable robotic-welded steel construction and specially designed components such as the exclusive Gemini direct drive system give you more "up time."
- ◆ Easy day-to-day serviceability and built-in durability mean reliability season after season.

\* patent pending



First to Finish ... Built to Last.

**GRASSHOPPER**  
YOUR NEXT MOWER

Call today for the location of your local Grasshopper dealer.

The Grasshopper Company • One Grasshopper Trail P.O. Box 637 • Moundridge, KS 67107 U.S.A.

Phone: (316) 345-8621 • FAX: (316) 345-2301

©1996, The Grasshopper Company

Circle No. 114 on Reader Inquiry Card



LANDSCAPE

**T**he advent of spring carries a soft whisper to our ear as we near a milestone birthday; a birthday many of us original Baby Boomers face with trepidation but confidence.

"You're never too old to learn something new," the voice tells us. And two weeks of travelling to various industry functions confirms that basic truism.

In the following months, you'll be reading more about our visits to the GCSAA national convention, the ALCA Executive Forum, the NAA annual convention, and more. But for now, we concentrate on some of the more memorable

moments.

► "Fifty percent of all the jobs that will be available in 10 years haven't been invented yet," Dr. Nate Booth told ALCA executives in Phoenix. He was making a point that your reaction to the unavoidable changes manifested in this era of high-tech will determine your ultimate success.

► "Every January, my wife and I get together with our appointment cal-

endars and block out time for each other," said Will Phillips of the Faust Management Corp. to ALCA members. "Maybe it's every Wednesday night for dinner, or maybe it's a long weekend; or a summer vacation. But we block the time on our calendars. There are occasions when we've got to cancel, but we always make sure to reschedule." The Booths have been married more than 30 years, and have three children: 30, 20 and 10.

► Randy Russell, manager of sports management for the city of Austin, Tex., told his golf course colleagues this:

"The older I get, the more I realize planning is the key. Every minute of planning saves seven minutes of execution and productivity."

Russell also extolled the virtues of continuous improvement. "Do not fall in love with your current practices, stay focused on the important, and remember that the best agronomic decision is not always best for the course."

► Dr. Booth, head corporate trainer at Robbins Research International, on the theory that actions speak louder than words:

"People who heard the Kennedy-Nixon debates on the radio say Nixon won. People who watched the debates on television say Kennedy won. It's becoming more apparent this year that Bob Dole needs a charisma transplant."

► Richard Norton of the National Golf Foundation, citing the results of a recent survey on the impact of the GCSAA and its members:

"The golf course superintendent has the opportunity to outreach and educate golfers about the course's possible impact on the environment."

► Phillips, again:

"If there is no gap between what you want and where you are, you're in trouble. The size of the gap indicates the energy for change. To close the gap requires that you actually solve some problems, and that's where we get stuck because that takes teamwork."

► Jerry Moland, owner of a small company in Phoenix, put an exclamation point everything we learned during our recent travels. Moland, a conscientious and empathetic veteran businessman, was forced to start a new career in landscaping at the age of 50. He reflects:

"After realizing I had to start over, I spent a few months laying on my back feeling like life was over. But that's not the way to do it. You have to realize that the American dream still does exist."

The little voices you hear as you go about your everyday routine are no less valuable than these introductory nuggets of wisdom. Write them down, remember them, learn from them, and live them. You'll be a better person for it. **LM**

Comments? Phone Jerry at (216) 826-2830 or e-mail him at 75553.502@compuserve.com

## Need to plan ahead never goes away



*Jerry Roche*

JERRY ROCHE  
Editor-in-Chief



INSIDE

THE VOICE OF THE GREEN INDUSTRY

# LANDSCAPE management



## FEATURES

### 10 THE 1996 EMERALD AWARDS!

Enter to win \$500, \$300 or \$200 in LANDSCAPE MANAGEMENT's 1996 Emerald Awards. Simply tell us which products you use to manage your clients' properties. The most popular products being used in the market will be the subject of a special Emerald Awards feature article in our August issue.

### 20 COVER STORY: WEED CONTROL, NORTH & SOUTH

Acceptable levels of weed populations and weed tolerance to control products are important factors to consider, whether you live in the North or South. But there are also many differences when controlling weeds in the different sections of the U.S.

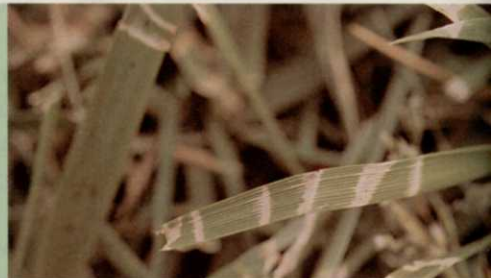
TOM FERMANIAN, PH.D.

TIM R. MURPHY, PH.D.

### 30 DRUG TESTING

Americans use about 60 percent of the world's supply of illegal drugs. It's quite possible you work next to, or with, one of the many casual or recreational drug users unless your company has a drug-free policy. Chris Kujawa of K.E.I. instituted a drug testing program two years ago, and he's glad he did. The program in force at K.E.I. includes fair warning and a second chance, but those aren't the only options.

JOHN R. CALSIN, JR.



### 54 TALL FESCUE: SURVIVAL OF THE FITTEST

If the turf you're maintaining just doesn't seem to be able to stand up to extremes in either the weather or other environmental stresses, turf-type tall fescue may be an alternative, according to Dr. A.J. Powell of the University of Kentucky.

JERRY ROCHE

## COLUMNS

1 OPENING SHOTS

8 ASK THE EXPERT

## DEPARTMENTS

12 HOT TOPICS

57 PRODUCT REVIEW

60 AD INDEX



INFORM + INTRODUCE + ADAPT

# DURSBAN ELIMINATES 140 INSECT PESTS BECAUSE ALL IT TAKES IS ONE TO BUG A CUSTOMER.



Most customers tend to overreact. Discover one lawn pest and they think they're infested. Never mind that most customers can't tell the difference between a sod webworm and a night crawler.

Keeping customers' lawns insect pest free is what Dursban\* insecticide is all about. Not only is it a dependable and economical broad spectrum insecticide,

but it has also been formulated to provide you an effective residual on most turfgrasses and ornamentals.

One thing for sure, use Dursban and customers won't be bugging you with their insect pest problems.

For further information on Dursban, or any other product in the extensive line of DowElanco products, give us a call at 1-800-352-6776. Always read and follow label directions.



\*Trademark of DowElanco





# REPRINTS

Reprints of *Landscape Management* articles, advertisements, news items or special announcements are available through Advanstar Marketing Services. Customized to meet your specific needs, reprints are highly effective when you use them to:

- ♦ Develop direct-mail campaigns
- ♦ Provide product/service literature
- ♦ Create trade show distribution materials
- ♦ Present information at conferences and seminars
- ♦ Train and educate key personnel, new hires
- ♦ Enhance press kits
- ♦ Compile reference materials
- ♦ Track trends and emerging technologies

ARTICLES  
NEWS ITEMS  
ADVERTISEMENTS

**LANDSCAPE**  
*management*

**ADVANSTAR MARKETING SERVICES**  
1-800-736-3665  
216-891-2742  
FAX: 216-891-2727  
7500 OLD OAK BLVD.  
CLEVELAND, OH 44130

**LANDSCAPE**  
*management*

## EDITORIAL STAFF

Fax (216) 891-2675  
E-mail 75553.502@compuserve.com

Jerry Roche **Editor-in-Chief** (216) 826-2830  
Terry McIver **Managing Editor** (216) 891-2709  
Ron Hall **Senior Editor** (216) 891-2636  
Lisa Bodnar **Graphic Designer** (216) 891-3101  
Vernon Henry **Group Editor** (216) 826-2829  
Lisa Lehman **Art Director** (216) 891-2785

## READER ADVISORY PANEL

Joe Alonzi **Westchester Country Club** Rye, N.Y.  
Rod Bailey **Evergreen Services** Bellevue, Wash.  
Alan Culver **Mahoney Golf Course** Lincoln, Neb.  
Charlie Racusin **Environmental Landscape Services** Houston  
Jack Robertson **Robertson Lawn Care** Springfield, Ill.  
Steve Wightman **Jack Murphy Stadium** San Diego

## BUSINESS STAFF

John D. Payne **Publisher** (216) 891-2786  
Leslie Montgomery **Administrative Coordinator** (216) 826-2856  
Judy Miducki **Production Manager** (218) 723-9281  
Alex DeBarr **Group Publisher** (216) 891-2789  
Donna Pack **Group Business Manager** (216) 891-3131  
Debi Harmer **Production Director** (218) 723-9325  
Rosy Bradley **Senior Production Manager** (218) 723-9352  
Bob Dahl **Circulation Manager** (218) 723-9274  
Lynn Viele **Green Book Coordinator** (218) 723-9393

## ADVERTISING OFFICES

**Headquarters** 7500 Old Oak Blvd.  
Cleveland, OH 44130-3369  
(216) 243-8100 Fax: (216) 891-2675

John D. Payne **Publisher** (216) 891-2786  
e-mail: jpayne2222@aol.com

Kerry Jacobson **Southeastern Sales Manager**  
(216) 891-2626

Tom Galligan **National Sales Manager**  
3901 52nd Ave.  
Kenosha, WI 53144-1830  
(414) 653-9523 Fax: (414) 653-9524  
e-mail: tgalligan@aol.com

Bob Mierow **Western Sales Manager**  
1333 N.W. Norcross  
Seattle, WA 98177-5235  
(206) 367-5248 Fax: (206) 367-5367

Dan Hoke **Classified Ad Manager** (216) 891-2672

## MARKETING SERVICES

Maureen Cannon **Reprints (100 minimum)** (216) 891-2742  
Mark Fleischer **Circulation List Rental** (216) 891-3166  
Advanstar Marketing **Microfiche/film Copies** (800) 225-4569, ext. 839  
Chris Baxter **Subscriber/Customer Service** (218) 723-9477  
Mary Abood **International Licensing** (216) 826-2804



**President & CEO** Gary R. Ingersoll  
**President, Advanstar Publishing** Brian Nairn  
**President, Advanstar Expositions** William M. Windsor  
**VP/Finance, CFO and Secretary** David W. Montgomery  
**Vice Presidents** Kevin J. Condon, William J. Cooke,  
Brian Langille, Phil Stocker  
**Treasurer & Controller** Adele D. Hartwick



PREVENT CRABGRASS WITH TEAM  
AND EVEN YOUR HARDEST CUSTOMER  
WILL CRACK A SMILE.



Dependability is what lawn care and landscape professionals look for in a preemergence herbicide. And dependability is what you get with the time proven Team\* herbicide. Since 1985, Team has proven itself effective at stopping a broad spectrum of troublesome grassy weeds, especially crabgrass.

With the rock solid performance of Team, you can expect consistent, season long control.



\*Trademark of DowElanco

Because nothing, pound for pound, prevents crabgrass better than Team, you know you've got a preemergent you can depend on to bring a smile to the face of any customer.

For further information on Team, or any other product in the extensive line of DowElanco products, give us a call at 1-800-352-6776. Always read and follow label directions.



Advanced Marketing Services

17000 Old Oak Blvd., Cleveland, OH 44130

© 2004 Dow

www.dow.com

LANDSCAPE MANAGEMENT, MAY 1998

8



# Preemergent Power

**Poa annua  
Crabgrass  
Goosegrass  
and broadleaf weeds**

- Convenient, easy to apply granules
- For use in turf, ornamentals and groundcovers
- High level of turfgrass tolerance
- Available in 12.5G and 7G formulations



**G pbi/gordon CORPORATION**  
An Employee-Owned Company

ALWAYS READ AND FOLLOW LABEL DIRECTIONS. CONTAINS BETASAN®

# PRE-SAN®

**GRANULAR HERBICIDE**

PRE-SAN® is a registered trademark of PBI/Gordon Corporation.  
BETASAN® is a registered trademark of Gowan Company.  
© PBI/GORDON CORPORATION, 1996

006/296

Circle 124

**NEW PUBLICATION!**

## Containment System Design:

Chemical Storage, Mixing and Recycling

by Fredric R. Haskett

Item #668 \$74.95



Find out how to prepare your company for the scrutiny of government regulators. Learn how your operation can comply with new regulations. Understand the legal implications of compliance versus noncompliance. Discover the difference between the cost of recycling finished product residues and the cost of disposal.

Areas covered in this comprehensive guide include: Planning, The Containment Facility, Equipment Standards, Site Standards, Emergency Response Procedures, and more.

**Call 1-800-598-6008**  
Outside the U.S. call 216-826-2839

**Advanstar Marketing Services**

7500 Old Oak Blvd. • Cleveland, OH 44130

Price subject to change

CODE: 949511

# LANDSCAPE management

A proud member of these green industry professional organizations:



**Associated Landscape Contractors of America**  
12200 Sunrise Valley Dr., Suite 150, Reston, VA  
(703) 620-6363

**American Association of Nurserymen  
(National Landscape Association)**

1250 I St. NW, Suite 500, Washington, DC 20005  
(202) 789-2900



**Golf Course Superintendents Assn. of America**

1421 Research Park Dr.  
Lawrence, KS 66049-3859  
(913) 841-2240

**International Society of Arboriculture**

P.O. Box 908, Urbana, IL 61801  
(217) 328-2032

**International Turfgrass Society**

Crop & Soil Environmental Sciences, VPI-SU,  
Blacksburg, VA 24061-0403  
(703) 231-9796



**National Arborist Association**

The Meeting Place Mall, P.O. Box 1094,  
Amherst, NH 03031-1094  
(603) 673-3311

**National Golf Foundation**

1150 South U.S. Highway One, Jupiter, FL 33477  
(407) 744-6006

**Ohio Turfgrass Foundation**

2021 Coffey Rd., Columbus, OH 43210  
(614) 292-2601



**Professional Grounds Management Society**

120 Cockeysville Rd., Suite 104,  
Hunt Valley, MD 21031  
(410) 584-9754



**Professional Lawn Care Association of America**

1000 Johnson Ferry Rd., NE, Suite C-135,  
Marietta, GA 30068-2112  
(404) 977-5222

**Responsible Industry for a Sound Environment**

1155 15th St. NW, Suite 900, Washington, DC 20005  
(202) 872-3860



**Sports Turf Managers Association**

1375 Rolling Hills Loop, Council Bluffs, IA 31503  
(712) 366-2669

**Turf and Ornamental Communicators Association**

P.O. Box 156, New Prague, MN 56071  
(612) 758-5811

LANDSCAPE MANAGEMENT (ISSN 0894-1254) is published monthly by Advanstar Communications, Inc. Corporate, editorial and advertising offices: 7500 Old Oak Blvd., Cleveland, OH 44130. Accounting, advertising production and circulation offices: 131 West First St., Duluth, MN 55802.

**Subscription rates:** one year, \$39, two years \$58 (U.S.); one year \$66, two years \$99 (Canada and Mexico); one year \$130, two years \$195 (all other countries). For air mail delivery, include an additional \$70 per order annually. Current issue single copies (pre-paid only): \$4 (U.S.); \$7 (Canada and Mexico); \$12 (elsewhere); add \$3.50 per order for shipping and handling. Back issues, if available, \$10 (U.S.); \$14 (Canada and Mexico); \$20 (other countries); add \$3.50 per order for shipping and handling (pre-paid orders only).  
**Office of publication:** Advanstar Communications, Inc., 131 W. First St., Duluth, MN 55802. Second class postage paid at Duluth, MN 55806 and additional mailing offices.

**Copyright ©1996 by Advanstar Communications, Inc.** All rights reserved. No part of this publication may be reproduced or transmitted in any form or by any means, electronic or mechanical, including photocopy, recording, or any information storage and retrieval system, without permission in writing from Advanstar Marketing Services, Attn: Permissions, 7500 Old Oak Blvd., Cleveland, OH 44130 or phone (800) 225-4569 x123. Authorization to photocopy items for internal or personal use, or the internal or personal use of specific clients, is granted by Advanstar Communications for libraries and other users registered with the Copyright Clearance Center.



**Canadian G.S.T. Number:** R-124213133, IPM number: 841919

**POSTMASTER:** Send address changes to Landscape Management, P.O. Box 6198, Duluth, MN 55806.





IF YOU WANT TO KNOW HOW LONG IT TAKES  
GALLERY WORKS TO PREVENT BROADLEAF WEEDS,  
ASK SOMEONE WITH TIME ON THEIR HANDS.



After applying Gallery\* preemergence herbicide, you've got about 6 to 8 months of good solid waiting before you'll spot the emergence of any of over 95 different broadleaf weeds. Even the tough ones like spurge, dandelion and plantain.

In fact, Gallery is the only preemergent on the market today that's designed to prevent so many broadleaf weeds, yet is safe over the top of all turfgrasses,

and over 400 different species of ornamentals.

So now that you have a little extra time on your hands, maybe you can get around to digging up even more business.

For further information on Gallery, or any other product in the extensive line of DowElanco products, give us a call at 1-800-352-6776. Always read and follow label directions.



 **DowElanco**

\*Trademark of DowElanco



## Ash dieback caused by construction

*A number of 10- to 40-inch dbh ash trees are showing various degrees of dieback and declining symptoms. This area is a four- to five-year-old development. I think it is related to construction damage. What do you think is the probable cause, and how can it be corrected?*

—MICHIGAN

Based on the information you provide, the problem does indeed sound as if it is related to construction activity. The dieback and decline symptoms you've seen could relate to some of the following factors:

1. Soil disturbance and root injury
2. Bark injury on trunk
3. Compacted soil caused by equipment traffic and poor aeration
4. Fill damage
5. Insect and/or disease activity

Fill damage is one of the major causes of tree decline. Generally, this would be more noticeable three to four years after the building is completed.

Often, it is too late. Ideally, the problem should be addressed before or during land development and construction. Where feasible, excess soil within the tree's dripline should be removed to the original grade. Install "wells" as needed and aerify compacted soil. Fill damage causes injury by suffocating the root system and changing water tables. Proper aeration, water, fertilizer and mulch should help improve

plant health.

Once the plants are weakened by the abiotic stress factors, the plants can be predisposed to a number of insect and/or disease problems. Among these, canker diseases and borer insect problems are the most common and destructive problems.

Inspect the affected trees closely for evidence of canker and/or borer problems.

Sunken and discolored areas with fungal fruiting bodies would suggest the possibility of fungal canker disease. Small exit holes or frass would suggest borer activity. If these problems are detected, promptly remove and discard affected plant parts.

Consider using a product such as Dursban for borers. There are no effective fungicidal treatments for cankers. To help plant vitality, be sure to water, fertilize and mulch as needed.

Systrex Nutrient, a systemic fungicide and micronutrient solution—it contains Bayleton fungicide and micronutrient—is made by Tree Tech Microinjection Systems in Florida. It is labeled for treating tree decline caused by several fungal agents.

Systrex can be injected into a declining tree with a microinjection delivery system, similar to microinjection of Alamo fungicide for oak wilt disease treatment.

Information on this treatment and its effect on declining trees is limited. Secondly, it is not clear whether the product can be used for ash decline.

Another cause of ash dieback and decline may be related to ash yellow disease caused by mycoplasma. However, at this time, there is no known effective treatment.

Products such as Tetracycline injection systems are being researched to determine the feasibility of managing this disease.

Read and follow label for better results.

## Broadleaf weed control without 2,4-D?

*Are there any herbicides which do not contain 2,4-D that can be used on lawns to control broadleaf weeds?*

—NEW YORK

Gallery, a pre-emergence herbicide, can be applied before weeds germinate. The weed seeds will germinate, but the seedlings will not emerge out of the soil.

You can also use post-emergence herbicides such as Trimec Encore, which contains MCPA; MCPP and dicamba; or, Confront, which contains triclopyr and clopyralid. Some of these are slightly slower-acting than herbicide formulations which contain 2,4-D.

The slow response may cause customer dissatisfaction, so discuss a change in herbicide and control expectations with customers.

Apply post-emergence herbicides during active weed growth. **LM**



**BALAKRISHNA RAO**  
*Manager of Research and  
 Technical Development  
 for the Davey Tree Co.  
 Kent, Ohio*

### SEND YOUR QUESTIONS TO:

"Ask the Expert"  
 Landscape Management  
 7500 Old Oak Blvd.  
 Cleveland, OH 44130

Please allow two to three months for an answer to appear in the magazine.



# Brown Patch And Dollar Spot Give You Two Choices.

Do a lot of explaining.

Prevent them with  
ProStar® and ProStar® Plus™.



## TWO excellent preventative/curative fungicides with different control spectrums.

**PROSTAR®** Fungicide controls brown patch, plus 7 other common turf diseases including fairy ring. With 2 to 3 weeks residual (versus 1 week), its unique class of chemistry is ideal for resistance management rotated with other fungicides. It also tank mixes with many other turf products.

**PROSTAR® PLUS™** Fungicide controls both brown patch and dollar spot. A premix that utilizes the lowest labeled rates of PROSTAR® and Bayleton®, the combined "synergistic" action is more effective than either agent alone. And it provides up to 30 days protection, even at these lowest labeled component rates.

**PROSTAR** and **PROSTAR PLUS** both have premeasured water-soluble packaging. Both are non-phytotoxic to all fine turfgrasses, and neither will interfere with growth regulator programs. Go with the obvious choice for best results.

**ProStar® and ProStar® Plus™**  
FUNGICIDE



**AgrEvo™**

A company of Hoechst and NOR-AM

Bayleton® is a registered trademark of Bayer, Inc. Read and follow label directions carefully. AgrEvo USA Company, Wilmington, DE 19808 ©1996

Circle No. 101 on Reader Inquiry Card



**WIN**



**\$500!**

LANDSCAPE MANAGEMENT magazine is offering a \$500 first prize to the winner of a random drawing to be held on June 21, 1996. Second prize is \$300 and third prize \$200 in cash. In order to be eligible for the drawing, simply fill out the questionnaire below and return it to LM's editorial offices.

Answers to the questions will be the basis for our "1996 Emerald Awards," to be revealed—along with the contest winner—in our August issue.

**CONTEST REQUIREMENTS:** Contestants must be owners or employees of landscape maintenance companies or lawn care companies; or maintenance employees of a golf course or country club, including superintendents and assistant superintendents; or an athletic field manager or member of an athletic field maintenance crew. Employees of Advanstar Communications and their families are not eligible.

All questions on this entry form must be completed, and all blanks filled. One entry per person. No more than five entries from any one employer will be allowed. Entry forms will appear in the March, April and May, 1992, issues of this magazine.

Completed questionnaires should be mailed to: Emerald Awards, LANDSCAPE MANAGEMENT, 7500 Old Oak Blvd., Cleveland, OH 44130. They must be received by noon, June 21, 1996.

A random drawing of all eligible entry forms will be held the afternoon of June 21, 1996. The winners will be notified within 24 hours.

**OFFICIAL ENTRY FORM**

**QUESTION:**

WHAT IS YOUR FAVORITE BRAND NAME OF:

CHECK HERE  
IF YOU DO  
NOT USE

riding mower?

walk-behind mower?

turf fertilizer?

pre-emergence herbicide?

post-emergence herbicide?

turf insecticide?

turf fungicide?

plant growth regulator?

compact tractor?

turf aerator?

pick-up truck?

leaf blower?

line trimmer?

chain saw?

Kentucky bluegrass?

perennial ryegrass?

turf-type tall fescue?

turfgrass mix or blend?

biological control product?

NAME: \_\_\_\_\_

EMPLOYER: \_\_\_\_\_

CITY/STATE: \_\_\_\_\_

PHONE NUMBER:  
(AC      ) \_\_\_\_\_