

New rider is powerful, stable

The Toro Company's Groundsmaster 3000 riding mower combines a 33-horsepower gas or diesel engine, designed to run noticeably quieter than previous engines, with greater hillside stability and easily-connected attachments.

The rotary mower is economical, stable and durable enough to handle numerous mowing needs, according to Toro. It features a larger wheelbase, lower center of gravity and larger tires.

The Guardian 84-inch Recycler mulching deck, also from Toro, is now available for the Groundsmaster 3000. It comes with an hydraulic counterbalance, soft-ride castor wheels and a deck design adjustable to extreme turf contours.

Three versions of the mower will be offered by spring of 1996.

Circle No. 211 on Reader Inquiry Card



Rain gauge combines accuracy and simplicity

A compact electric rain gauge from Innoquest provides accurate indoor readings to 0.01-inch resolution.

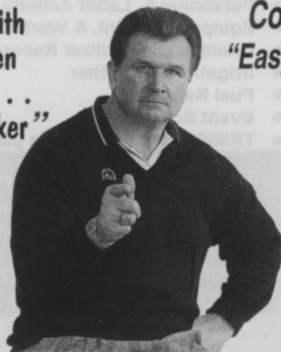


The easy-to-install gauge records each rainfall as well as a cumulative total on a battery-operated display. Memory can be reset with the touch of a button, without having to empty the unit. The collector was designed to be rugged enough to withstand the elements all year round.

Model DRG-6VB comes complete with mounting hardware and 40 feet of connecting wire.

Circle No. 212 on Reader Inquiry Card

"Go with a proven winner . . . Easy Marker"



Mike Ditka

Coaching Great Mike Ditka says, "Easy Marker is the perfect tool for your temporary marking needs!"

easy marker®

"Meets temporary marking needs for special events, construction and utility projects, golf course and landscape work. Saves money by clearly marking work sites with instructions to avoid costly mistakes."

SOME USES . . .

- Construction
- Utility Companies
- Landscaping
- Golf Courses



Also from FOX VALLEY SYSTEMS

SUPER STRIPER® \$49⁹⁵

- STRIPE . . .
- Parking Lots!
 - Warehouse Floors!
 - Athletic Fields!

SUPER STRIPE® TRAFFIC POWER PAINT CARTRIDGES Perfect for either covering old faded lines or for striping new ones. Paint is fast drying, offers one coat coverage even on a variety of surfaces and comes in eight choices of colors. One case will cover about 2,400 linear feet of bright crisp 3" lines.

12 (18 oz.) cans per case \$49⁹⁵

SUPER SUPREME® TRAFFIC POWER PAINT CARTRIDGES Our best paint is specially formulated with modified acrylic for a harder finish. Ideal for heavy traffic areas.

\$69⁹⁵
12 (18 oz.) cans per case

U.S. patent numbers 4126273, 4895304, 4940184, 4943008, 4946104, D320757, D324053

GREAT FEATURES . . .

SPRAY CAN - specially designed with the patented EASY MARKER/TRIG-A-CAP nozzle for consistent paint flow, easily inserted into the holder

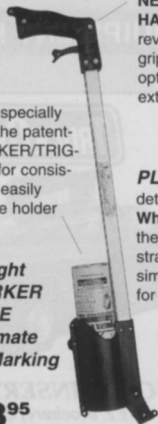
Lightweight EASY MARKER HANDLE is the Ultimate Temporary Marking Tool!

Only \$8⁹⁵

© 1995 FOX VALLEY SYSTEMS, INC.
U.S. and foreign patents pending

NEW COMFORT HANDLE - revised plastic grip with locking option for extended use

PLUS . . . detachable Wheel to aid in the application of straight lines - simply remove for freehand use!



easy marker® / trig-a-cap® POWER PAINT CARTRIDGES

Best paint on the market because it's loaded with pigment which means you get more marks from every can, about 2 1/2 miles per case! Available in paint cartridges or in chalk for less permanent marking. Can be used out of the holder for hand marking. Made *exclusively* for use in easy markers and for handheld applications. Call for the full selection of colors.



12 (17 oz.) cans per case \$28⁵⁰

See your local dealer for product information or call:

1-800-MARKERS
1-800-627-5377
DEALER INQUIRIES INVITED

FOX VALLEY SYSTEMS, INC.

DEPT. 4222 • 640 INDUSTRIAL DRIVE • CARY, ILLINOIS 60013
The Old Fashioned Company with Old Fashioned Values

Every month the Market Showcase offers the readers of Landscape Management a complete and up-to-date section of the products and services you're looking for. Check it out every month, or you might miss out.

LANDSCAPE MANAGEMENT

"WE KNOW YOUR TURF"

FOR ADVERTISING INFORMATION AND AD PLACEMENT, CONTACT:
Stephanie Stiggers-Smith, 216-891-2719
 1-800-225-4569 (ext. 719)
 Fax 216-826-2865

For all ads under \$250, payment must be received by the classified closing date. VISA, MASTERCARD, & AMERICAN EXPRESS accepted. Send to: Advanstar Marketing Services, 7500 Old Oak Blvd., Cleveland, OH 44130.

Send blind box replies to: Landscape Management, 131 W. First St., Duluth, MN 55802 (Include box number in address.)

FOR SALE



LANDSCAPE DESIGN KIT 3
 48 rubber stamp trees, shrub, & plant symbols & more
 1/8" scale. Stamp sizes range 1/4" to 1 3/4"
 \$77.50 + \$5 s/h VISA/MasterCard, or mo's shipped
 next day. Checks delay shipment 3 weeks. No cod's
 CA add 7.75% Sales Tax.

AMERICAN STAMP CO.
 12290 Rising Rd., Dept. LM955
 Wilton, CA 95693
 Voice/FAX (916) 687-7102

FREE
 LANDSCAPE
 DESIGNBOOK
 WITH YOUR
 LDK 3 ORDER!

FREE Landscape Design Book with your LDK order.

COMMERCIAL INSURANCE FOR LAWN CARE FIRMS "GREEN INDUSTRY SPECIALISTS"

M.F.P. Insurance Agency is dedicated to providing comprehensive insurance programs to the Green Industry at competitive prices. We back up this dedication with a staff of professionals who understand every facet of your business, from marketing to customer service. We know how to properly insure your company whether you're a sole proprietor or a multi-state operation.

Just as your customers look to you for lawn care advice, people come to us for insurance advice because they do not want to become insurance experts themselves. If you want good advice, the right coverage, and competitive rates, please contact:

Richard P. Bersnak, President

Jill A. Leonard, V.P.

1-800-886-2398
 FAX: 614-221-2203

M.F.P. Insurance Agency, Inc.
 50 West Broad Street, Suite 3200
 Columbus, OH 43215-5917

Circle No. 301 on Reader Inquiry Card

Classified Advertising is

- EASY
- EFFECTIVE
- and
- ECONOMICAL

MISCELLANEOUS




60'x100'x10'
\$13,981

Build it yourself and save MONEY. 5,000 sizes, all bolt-together ALL STEEL BUILDINGS. Call today for a price quote and a brochure.

HERITAGE BUILDING SYSTEMS
 800-643-5555

SOFTWARE



TRIMS for Windows

The World's Most Popular
 Grounds Management Software is now
 available for Microsoft Windows.

TRIMS for Windows Includes:

- Budgets & Expenses Tracking
- Inventory & Purchase Orders
- Personnel & Labor Activity Records
- Equipment Maint. & Work Orders
- Chemical & Fertilizer Records
- Irrigation & Weather
- Fuel Reporting
- Event Scheduling
- TRIMS DrawView for site plans

TRIMS Software International
 3110 N. 19th Ave. - Suite 190
 Phoenix, AZ 85015

For More Information Call:
 (800) 708-7467 or (602) 277-0067



Creative curb
 Concrete Curb & Landscape Border Equipment

Create Beautiful
 Concrete Borders & Curbs
 for Less than Half the Cost
 of Conventional Methods!

- Add on to your services/profits
- Low maintenance/easy to use
- Self-propelled, electric or gas powered
- Create various shapes and sizes
- Durable curbing is freeze/thaw tolerant

23042 Alcalde #C • Laguna Hills, CA 92653
 (714) 587-8488 • (800) 292-3488 • FAX: (714) 951-2656



THE TREE SAVER

YOU CAN STAKE UP TO 20 TREES PER HOUR WITH THE TREE SAVER™ TREE STAKE KITS

Our unique rubberized tree anchoring system saves time & money, grows stronger root systems and helps protect you from injury liability. Call today for a **FREE** product sample.

1-800-833-5323

Lawson Landscape Products,
 A Division of
 Lawson & Lawson, Inc.
 35 Industrial Drive,
 P.O. Box 1784,
 Martinsville, IN 46151

TREE STAKE KITS

EQUIPMENT FOR SALE



TRUCKCRAFT

PICKUP INSERT DUMPER
 For FREE brochure, call toll free 24 hr.
 1-800-755-3867
 WE SHIP NATIONWIDE

Reserve Ad Space
 in the next issue of
Landscape Management

Call Stephanie Stiggers-Smith:
 216-891-2719
 or fax your copy to her at
 216-826-2865

Subscription Information:
 800-346-0085, ext 477

For all ads under \$250, payment must be received by the classified closing date. We accept Visa, Mastercard & American Express. Credit card orders are accepted by phone. Send ad copy with payment to **Stephanie Stiggers-Smith, LANDSCAPE MANAGEMENT, 7500 Old Oak Blvd., Cleveland, OH 44130** or call **216-891-2719**. Fax Number 216-826-2865.

BOX NUMBER REPLIES: Mail box number replies to: LANDSCAPE MANAGEMENT, Classified Ad Department, 131 W. 1st St., Duluth, MN 55802-2065. Please include box number in address.

HELP WANTED

Atlantic Landscapes Opportunities: We are currently seeking key people to work interior and/or exterior. We offer competitive salary, excellent benefits and unlimited opportunities in our: Richmond, VA; Hampton Road, Virginia Beach, VA; and Research Triangle, Raleigh, NC offices. Please call, fax or mail us a resume. Atlantic Landscapes, 1400B Nowell Rd., Raleigh, NC 26717. Phone 919-233-2930. Fax 919-233-2941. 11/95

MAINTENANCE MANAGERS & SUPERVISORS: One of the nation's largest and fastest growing full service landscape companies has an immediate need for experienced maintenance managers and superintendents, as well as entry level maintenance supervisors in the Midwest, Southwest, Mid-Atlantic, Northeast and Southeast states. The company seeks energetic, team oriented college graduates with proven leadership, communication and interpersonal skills. The company offers full-time positions, excellent advancement opportunities and exceptional compensation and benefits with an industry leader celebrating more than 50 years of uncompromising customer service. For immediate confidential consideration, please send or fax your resume to: The Brickman Group, Ltd., Corporate Office, 375 S. Flowers Mill Road, Langhorne, PA 19047, 215-757-9630, EOE 9/95

Sales Manager: Growing company is looking for a Sales Manager with Design and Estimating experience. Send resume with salary history to: Mr. Bo's Inc., 955 Blesterfield Road, Elk Grove, IL 60007. 9/95

Searching for the right employee? Time for a new position? Contact **Florapersonnel, Inc.**, international search and placement firm for the landscape, irrigation industries and allied trades. **Confidential. Fee paid by employer.** Florapersonnel, Inc., 2180 W. 434, Suite 6152, Longwood, FL 32779-5008. Phone: (407)682-5151 Fax: (407)682-2318. TF

SOUTHERN TREE NEEDS YOU!! North Carolina commercial landscape firm is seeking qualified personnel for Charlotte, Greensboro, and Raleigh: **IRRIGATION MANAGER/SALES** Manager to start up Irrigation Division in Raleigh. Strong irrigation background essential. **LANDSCAPE MAINTENANCE FOREMEN** Two foremen with solid maintenance experience. Irrigation, sales, landscaping experience preferred. **HORTICULTURIST** Plant identification and pruning experience. **CHEMICAL APPLICATOR** Plant, insect, and disease identification. Pesticide license or ability to obtain. Respond to: HR Manager, Southern Tree & Landscape Companies, PO Box 7067, Charlotte, NC 28241. (704)375-7555 or Fax (803)548-4792. 9/95

SALES/MARKETING PROFESSIONAL- Landscaping firm with long term reputation for exceptional quality seeks an experienced salesperson with knowledge in landscaping maintenance, installation and estimating. Horticultural degree preferred. Position is based in Boca Raton, Florida. Call 407-997-0696 or fax resume to Human Resources Attn: Pat 407-997-0971. 10/95

MAINTENANCE SUPERVISORS, ACCOUNT MANAGERS: One of the nation's largest landscape management companies looking for experienced maintenance and irrigation supervisors in No. California market. We're seeking energetic, creative, team oriented people. Excellent growth opportunities and benefits package. Please mail or fax resume to: Environmental Care, Inc., 825 Mabury Rd., San Jose, CA 95133. Fax (408)437-1817. 11/95

Landscape Installation and Maintenance Award winning regional based company seeking quality supervisors and foremen with leadership skills for our Columbus branch. Experience in grounds maintenance and/or installation a must. Small engine repair knowledge, lawn and tree care license, or irrigation experience a plus. These year round positions are available for immediate start. We offer top pay, medical and dental benefits, 401k and more. Send resume to **PROLAWN PROSCAPE**, 11488 Deerfield Rd., Blue Ash, Ohio 45242. 11/95

ENVIROMENTAL CARE, INC., Nations' largest full service landscape maintenance company is currently accepting applications for experienced maintenance supervisors. Proven horticultural knowledge and communication skills required. Company provides medical, dental, life insurance and 401K plan. For immediate consideration FX resume to 602-276-8191 or mail to 2902 E. Illini, Phoenix AZ 85040. Phone 602-276-5900. Attn: Bill Rademacher. 10/95

BUSINESS FOR SALE

Landscape design & maintenance company. Established for 10 years servicing Metro Detroit. Excellent growth potential. Well established accounts. Includes all equipment. Gross sales in 1994 over 390,000.00. Asking 140,000.00. Write Landscaping Services, P.O. Box 24015, Detroit, MI 48224-0015. 12/95

Chicago; SW suburbs, growing Landscape and Maintenance company. Good profits, newer equipment. Grossing 600K plus, Commercial/Residential contracts. Owner willing to help with transition. Call PC Commercial 708-361-9000. 10/95

BUSINESS OPPORTUNITIES

FREE! LAWN AND PEST CONTROL SURVIVAL CATALOG. Non-Compete Agreements, Equipment Assignment, Office Forms, Contracts, Sales Letters, **A+BB** 1505 S.E. Elm St., High Springs, Florida 32643. Voice-24HRS. **1-800-308-4522** ext. 3 12/95

POSITIONS WANTED

LANDSCAPE MANAGEMENT CONSULTANT Consider an alternative to hiring a senior-level manager. Reduce costs and ensure employee loyalty through training in systems and procedures that will best help your business succeed. With nineteen years experience in landscape maintenance in Texas, Florida and the Midwest, I've helped companies grow, stabilize their work force, increase profits, and develop processes to enhance the company's performance. Estimating, scheduling, budgeting, crew organization and effectiveness, profitability and job quality are evaluated and a plan for improvement developed. T.D. MORLAND/HBMC (608)832-6401 9/95

EDUCATIONAL OPPORTUNITIES

NOW...LEARN PROFESSIONAL LANDSCAPING AND GARDENING AT HOME! Accredited program provides thorough training in all phases of commercial and residential landscaping. Diploma awarded. Free brochure describes program and opportunities in detail. Call 1-800-326-9221 or write Lifetime Career Schools, Dept: LF0115, 101 Harrison Street, Archbald, PA 18403. 12/95

FOR SALE

BUCKET TRUCK: Hi Ranger 65', 57', 50'. Skyworkers with chip boxes. Asplundh bucket trucks with chip boxes. Asplundh brush chippers. Bean 55 gal. sprayers. Pete Mainka Enterprises, 633 Cecilia Drive, Pewaukee, WI 53072. 800-597-8283. 12/95

Mail Blind Box
Replies to:
**LANDSCAPE
MANAGEMENT**
Classified Ad Dept.,
131 W. First St.,
Duluth, MN 55802

Please include box number in address!

ADVERTISER INDEX

- 101 AgrEvo USA Co. 9G
- 102 AgrEvo USA Co. 9G
- 103 AgrEvo USA Co. 15G
- 104 AgrEvo USA Co. 33
- 128 ALCA 23
- 105 American Cyanamid 35
- 106 American Cyanamid 10-11
- 107 American Cyanamid 10-11
- 127 Ciba 7G
- 109 Dalen 17L
- Dow Elanco 17
- Dow Elanco 19
- Dow Elanco 21
- Dow Elanco 23
- 110 Fox Valley Systems ... 41
- 111 General Motors Corp. 24-25
- 129 Green Industry Expo 31
- 112 Grasshopper Co. 7
- Intuit 19L
- 113 John Deere 1G-4G
- 114 John Deere 1L-12L
- 115 John Deere 27L
- 116 Kubota Tractor 37
- 117 Lofts Seed Cv4
- 118 Lofts Seed Cv4
- 119 Melroe Bobcat 29
- 108 Miles 4-5
- 120 Nextel Communications 31
- 121 Oregon Tall Fescue .. Cv3
- 130 PLCAA 23L
- 122 Tee 2 Green Cv2
- 123 Toro Co. 13
- 124 Turfco Mfg. 25L
- 125 Valent USA Corp. 11G
- 126 Walker Mfg. 21L

This index is provided as an additional service. The publisher does not assume any liability for errors or omissions.

EQUIPMENT FOR SALE

2 Low profile fiberglass chelmlawn bodies 1200 gal. tank split 400/800 w/200 gal. torpedo tank, 3 hose reels complete with dual pumps, excellent condition. \$2,950.00 each. Call Cavalier Equipment 703-992-3355, Fax 703-992-2150. 10/95

SPYDERS- New/Used/Rebuilt. Full line of replacement parts and update kits. Kubota, Ruggerini, and Kohler engines & parts. Nichols-Fairfield torque hubs. We repair and rebuild Spyder hydraulic pumps and motors. **FAST SERVICE.** Call or write: Mobile Lift Parts Inc., 5402 Edgewood Rd., Crystal Lake, IL 60012. (800)397-7509, FAX (815)455-7366. 12/95

REINCO HYDROGRASSERS and power mulchers in stock. Opdyke Inc., (Philadelphia Area) 215-721-4444. 12/95

BUCKET TRUCKS: Straight Stick, Corner Mount and Knuckle Boom Cranes. Brush Chippers: New Morbark Disc and Drum Style. New Rayco Stump grinders. Best prices anywhere. Used Chippers: Asplundh, Morbark, etc. 2 to 8 usually in stock. Sprayers, Dumps, Stakes, Log Loaders, Crew Cab Chip Box Dumps, Railroad Trucks, 50 in stock. Sold as-is or reconditioned. We also buy your surplus equipment. Opdyke's, Hatfield (Philadelphia Area). 215-721-4444. 12/95

FOR SALE: Tree Spade, Vermeer Model 84, Mounted on Chev Truck. 30,000 Miles - Excellent Condition. Call (903)893-9657. Ask for Read. 9/95

LEASE FINANCING

LEASE any type equipment for your business. Call AmeriNet Financial (216)543-3800. 9/95

WHOLESALE DISTRIBUTOR

Needed to market environmentally friendly, liquid, slow-release fertilizer products direct from manufacturer. Ken Franke, P.O. Box 123, Plato, MN 55370; 800-832-9635. 9/95

MARKET SHOWCASE & CLASSIFIED ADVERTISING

For all ads under \$250, payment must be received by the classified closing date. We accept VISA, MASTERCARD & AMERICAN EXPRESS. Credit card orders are accepted by phone.

ISSUES	CLOSING DATES
November	10-10
December	11-10

(Call rep for date confirmation.)

SEND AD COPY WITH PREPAYMENT TO:
Stephanie Stiggers-Smith
Landscape Management
7500 Old Oak Blvd.
Cleveland, OH 44310

for more information, call Stephanie:
1-800-225-4569 or 216-891-2719
Fax: 216-826-2865

LANDSCAPE MANAGEMENT BOOKSTORE



Compendium of Ornamental Foliage Plant Diseases

by A.R. Chase

92 pages, softcover

LSM-BK-415

\$30.00



Turf Managers' Handbook

by W.H. Daniel & R.P. Freeborg

437 pages, hardcover

LSM-BK-110

\$39.95

Call 1-800-598-6008

Outside the U.S. call 216-826-2839

Advanstar Marketing Services

7500 Old Oak Blvd. • Cleveland, OH 44130

CODE: 949095

BUSINESS REPLY MAIL

FIRST CLASS MAIL PERMIT NO 950 PITTSFIELD MA

POSTAGE WILL BE PAID BY ADDRESSEE

LANDSCAPE MANAGEMENT

ADVANSTAR COMMUNICATIONS INC
PO BOX 5054
PITTSFIELD MA 01203-9698

NO POSTAGE
NECESSARY
IF MAILED
IN THE
UNITED STATES



NAME _____
TITLE _____
FIRM _____
ADDRESS _____
CITY _____
STATE _____ ZIP _____

TELEPHONE (_____) _____
FAX NUMBER (_____) _____

HAVE A SALES REP CALL ME 18 (A)

101	118	135	152	169	186	203	220	237	254	271	288	305	322
102	119	136	153	170	187	204	221	238	255	272	289	306	323
103	120	137	154	171	188	205	222	239	256	273	290	307	324
104	121	138	155	172	189	206	223	240	257	274	291	308	325
105	122	139	156	173	190	207	224	241	258	275	292	309	326
106	123	140	157	174	191	208	225	242	259	276	293	310	327
107	124	141	158	175	192	209	226	243	260	277	294	311	328
108	125	142	159	176	193	210	227	244	261	278	295	312	329
109	126	143	160	177	194	211	228	245	262	279	296	313	330
110	127	144	161	178	195	212	229	246	263	280	297	314	331
111	128	145	162	179	196	213	230	247	264	281	298	315	332
112	129	146	163	180	197	214	231	248	265	282	299	316	333
113	130	147	164	181	198	215	232	249	266	283	300	317	334
114	131	148	165	182	199	216	233	250	267	284	301	318	335
115	132	149	166	183	200	217	234	251	268	285	302	319	336
116	133	150	167	184	201	218	235	252	269	286	303	320	337
117	134	151	168	185	202	219	236	253	270	287	304	321	338

LANDSCAPE MANAGEMENT

SEPTEMBER 1995

This card is void
after November 15, 1995

1. BUSINESS & INDUSTRY

MY PRIMARY BUSINESS AT THIS LOCATION IS:
(PLEASE MARK ONLY ONE IN EITHER A, B OR C)

A. Landscaping/Ground Care at one of the following types of facilities:

- 01 0005 Golf courses
02 0010 Sports Complexes
03 0015 Parks
04 0025 Schools, colleges, & universities
05 Other type of facility (please specify) _____

B. Contractors/Service Companies/Consultants:

- 06 0105 Landscape contractors (installation & maintenance)
07 0110 Lawn care service companies
08 0112 Custom chemical applicators
09 0135 Extension agents/consultants for horticulture
10 Other contractor or service (please specify) _____

C. Suppliers:

- 11 0205 Sod growers
12 Other supplier (specify) _____

Which of the following best describes your title:
(mark only one)

- 13 10 EXECUTIVE/ADMINISTRATOR
14 20 MANAGER/SUPERINTENDENT
15 30 GOVERNMENT OFFICIAL
16 40 SPECIALIST
17 50 OTHER TITLED AND NON-TITLED PERSONNEL (specify) _____

I would like to receive (continue receiving)

LANDSCAPE MANAGEMENT each month: YES NO

Signature: _____ Date: _____

LANDSCAPE MANAGEMENT

SEPTEMBER 1995

This card is void
after November 15, 1995

1. BUSINESS & INDUSTRY

MY PRIMARY BUSINESS AT THIS LOCATION IS:
(PLEASE MARK ONLY ONE IN EITHER A, B OR C)

A. Landscaping/Ground Care at one of the following types of facilities:

- 01 0005 Golf courses
02 0010 Sports Complexes
03 0015 Parks
04 0025 Schools, colleges, & universities
05 Other type of facility (please specify) _____

B. Contractors/Service Companies/Consultants:

- 06 0105 Landscape contractors (installation & maintenance)
07 0110 Lawn care service companies
08 0112 Custom chemical applicators
09 0135 Extension agents/consultants for horticulture
10 Other contractor or service (please specify) _____

C. Suppliers:

- 11 0205 Sod growers
12 Other supplier (specify) _____

Which of the following best describes your title:
(mark only one)

- 13 10 EXECUTIVE/ADMINISTRATOR
14 20 MANAGER/SUPERINTENDENT
15 30 GOVERNMENT OFFICIAL
16 40 SPECIALIST
17 50 OTHER TITLED AND NON-TITLED PERSONNEL (specify) _____

I would like to receive (continue receiving)

LANDSCAPE MANAGEMENT each month: YES NO

Signature: _____ Date: _____

NAME _____
TITLE _____
FIRM _____
ADDRESS _____
CITY _____
STATE _____ ZIP _____

TELEPHONE (_____) _____
FAX NUMBER (_____) _____

HAVE A SALES REP CALL ME 18 (A)

101	118	135	152	169	186	203	220	237	254	271	288	305	322
102	119	136	153	170	187	204	221	238	255	272	289	306	323
103	120	137	154	171	188	205	222	239	256	273	290	307	324
104	121	138	155	172	189	206	223	240	257	274	291	308	325
105	122	139	156	173	190	207	224	241	258	275	292	309	326
106	123	140	157	174	191	208	225	242	259	276	293	310	327
107	124	141	158	175	192	209	226	243	260	277	294	311	328
108	125	142	159	176	193	210	227	244	261	278	295	312	329
109	126	143	160	177	194	211	228	245	262	279	296	313	330
110	127	144	161	178	195	212	229	246	263	280	297	314	331
111	128	145	162	179	196	213	230	247	264	281	298	315	332
112	129	146	163	180	197	214	231	248	265	282	299	316	333
113	130	147	164	181	198	215	232	249	266	283	300	317	334
114	131	148	165	182	199	216	233	250	267	284	301	318	335
115	132	149	166	183	200	217	234	251	268	285	302	319	336
116	133	150	167	184	201	218	235	252	269	286	303	320	337
117	134	151	168	185	202	219	236	253	270	287	304	321	338

Use Your New
LANDSCAPE
MANAGEMENT
Reader Service
Card to receive
FREE
information on
products
and services
advertised
in this issue.

NAME _____
 TITLE _____
 FIRM _____
 ADDRESS _____
 CITY _____
 STATE _____ ZIP _____

TELEPHONE (_____) _____
 FAX NUMBER (_____) _____

HAVE A SALES REP CALL ME 18 (A)

101	118	135	152	169	186	203	220	237	254	271	288	305	322
102	119	136	153	170	187	204	221	238	255	272	289	306	323
103	120	137	154	171	188	205	222	239	256	273	290	307	324
104	121	138	155	172	189	206	223	240	257	274	291	308	325
105	122	139	156	173	190	207	224	241	258	275	292	309	326
106	123	140	157	174	191	208	225	242	259	276	293	310	327
107	124	141	158	175	192	209	226	243	260	277	294	311	328
108	125	142	159	176	193	210	227	244	261	278	295	312	329
109	126	143	160	177	194	211	228	245	262	279	296	313	330
110	127	144	161	178	195	212	229	246	263	280	297	314	331
111	128	145	162	179	196	213	230	247	264	281	298	315	332
112	129	146	163	180	197	214	231	248	265	282	299	316	333
113	130	147	164	181	198	215	232	249	266	283	300	317	334
114	131	148	165	182	199	216	233	250	267	284	301	318	335
115	132	149	166	183	200	217	234	251	268	285	302	319	336
116	133	150	167	184	201	218	235	252	269	286	303	320	337
117	134	151	168	185	202	219	236	253	270	287	304	321	338

LANDSCAPE MANAGEMENT

SEPTEMBER 1995
 This card is void after November 15, 1995

1. BUSINESS & INDUSTRY
 MY PRIMARY BUSINESS AT THIS LOCATION IS:
 (PLEASE MARK ONLY ONE IN EITHER A, B OR C)
A. Landscaping/Ground Care at one of the following types of facilities:
 01 0005 Golf courses
 02 0010 Sports Complexes
 03 0015 Parks
 04 0025 Schools, colleges, & universities
 05 Other type of facility (please specify) _____

B. Contractors/Service Companies/Consultants:
 06 0105 Landscape contractors (installation & maintenance)
 07 0110 Lawn care service companies
 08 0112 Custom chemical applicators
 09 0135 Extension agents/consultants for horticulture
 10 Other contractor or service (please specify) _____

C. Suppliers:
 11 0205 Sod growers
 12 Other supplier (specify) _____

Which of the following best describes your title:
 (mark only one)
 13 10 EXECUTIVE/ADMINISTRATOR
 14 20 MANAGER/SUPERINTENDENT
 15 30 GOVERNMENT OFFICIAL
 16 40 SPECIALIST
 17 50 OTHER TITLED AND NON-TITLED PERSONNEL (specify) _____

I would like to receive (continue receiving)
 LANDSCAPE MANAGEMENT each month: YES NO
 Signature: _____ Date: _____



BUSINESS REPLY MAIL
 FIRST CLASS MAIL PERMIT NO 950 PITTSFIELD MA

POSTAGE WILL BE PAID BY ADDRESSEE

LANDSCAPE MANAGEMENT

ADVANSTAR COMMUNICATIONS INC
 PO BOX 5054
 PITTSFIELD MA 01203-9698



NO POSTAGE
 NECESSARY
 IF MAILED
 IN THE
 UNITED STATES

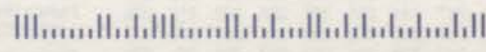


BUSINESS REPLY MAIL
 FIRST CLASS MAIL PERMIT NO 950 PITTSFIELD MA

POSTAGE WILL BE PAID BY ADDRESSEE

LANDSCAPE MANAGEMENT

ADVANSTAR COMMUNICATIONS INC
 PO BOX 5054
 PITTSFIELD MA 01203-9698



Use Your New
**LANDSCAPE
 MANAGEMENT**
 Reader Service
 Card to receive
FREE
 information on
 products
 and services
 advertised
 in this issue.



your good judgment

Will tell you to select

turf type

Tall Fescue seed from Oregon

the beauty

of the blades

the strength

and durability

the tolerance

to drought & disease

the quality!

Look for the grown in Oregon label. It puts all others in a lower class. A lush, healthy, deep green turf is your reward for selecting superior seed. The world's leading turf grass breeders have been perfecting it for more than 20 years. The tough, vibrant turf will not only tolerate drought, but survive cold winters.

When you select Turf Type Tall Fescue seed from Oregon you can be sure you will enjoy your "good judgment" decision year after year.

**TURF
TYPE
TALL
FESCUE**

SEED FROM OREGON

Oregon Tall
Fescue Commission
1193 Royvonne, Suite 11
Salem, OR 97302
503-585-1157