

# PRODUCT REVIEW

## Sound barriers install quickly, last a long time

The new Sylvia Outdoor Sound Wall uses prestressed wood that provides fast and easy installation, substantial cost savings and lasts two-to-three times longer than conventional sound walls.

Sound barrier units include wooden frames made of vertical and horizontal drilled prestressed wooden beams which surround either solid wood sound-reflecting panels or sound-absorbing panels filled with foam or mineral wool.

Frames that are longer than 13 feet need an additional supporting beam. A metal link runs across the top of the supporting concrete foundation blocks, which are placed eight to 30 feet apart, while a prestressed vertical pole secures the panel and bottom joist.

Prestressing increases the stiffness and



vertical stability of the wood panels, and provides enhanced impact resistance.

**Circle No. 191 on Reader Inquiry Card**

## Attachment reaches highest limbs with ease

The Hedger attachment from Technic Tool Corporation is designed to quickly and efficiently shape, prune, trim and thin hedges, brush and limbs up to 1-1/2 inches in diameter.

The cutting lade is made from hardened spring steel for longer teeth life.

The Hedger attaches easily to the end of the Technic Tool Power Pruner, and allows users to safely reach and trim in areas they couldn't reach with a reciprocating hedge trimmer.

The portable Hedger weighs less than two pounds and has a steel guard for operator safety.

The Hedger is available for both the standard and insulated Model D Power Pruners.

**Circle No. 193 on Reader Inquiry Card**

## Doppler radar predicts patterns and severity of thunderstorms

Accu-Weather, Inc. has made its proprietary StormVue Nexrad Doppler radar product available to the green industry.

Storm Vue predicts the path of thunderstorms. Individual thunderstorms are

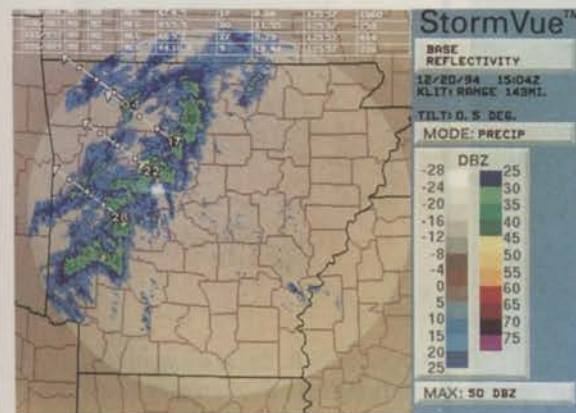
locations of storms. Boxes along the storm track indicate future positions of the storm at 15 minute intervals.

Accu-Weather's StormVue can be overlaid onto any of the 20 color graphic Nexrad Doppler radar products from any of the 88 Nexrad sites currently available from Accu-Weather.

The Nexrad storm information table identifies individual thunderstorms and contains valuable detailed information on the severity and movement of those storms. The storm information table even indicates which storms are producing hail, rotating and/or may be producing tornadoes.

Accu-Weather also allows users to overlay the storm information table onto any Nexrad product from any available site.

**Circle No. 192 on Reader Inquiry Card**



identified and highlighted within a boxed area. Predicted storm paths are displayed as a line or storm track.

StormVue also shows actual future



## Erosion control fabric keeps roads safe from mud slides

Traffic accidents caused by mud washing onto roads in Tucson induced city officials to provide protection against erosion on the city's new Kolb Road.

Armater geocell erosion fabric made by Akzo Nobel was used. Armater is a three-dimensional, semi-rigid geomatrix designed to provide erosion protection around the most demanding engineering and excavation projects where vegetation is scarce, as in earth and slope surface reinforcements, highway embankments, headwalls and pipeline installations.

The Armater stabilizes the surface of earth and fill structures, and offers excellent slope protection and support. It provides permanent erosion control with a non-woven, polyester fabric structure that is permeable, lightweight, rot-proof and strong.

Armater's distinctive honeycomb shape may be filled with sand, clay, gravel or other native soils to assure stabilization and erosion prevention.

**Circle No. 194 on Reader Inquiry Card**



## Walk-behind or ride new mower

The WR-1752 mower, from Rich Manufacturing is a commercial quality rotary mower that converts from riding unit to walk-behind mower without the use of a sulky or pull-behind device.

The mower goes from ride to walk positions while the machine is in neutral gear by removing a one-pin connector.

Hydrostatic transmission is by Hydro-Gear, and is combined with a gear reduc-

tion axle to reduce high pressure hoses and provide more space.

The mower was tested and developed during more than 7000 hours of lawn maintenance use.

The WR-1752 is powered by a 17-hp Kawasaki engine, and the mower uses a concentric shaft and chain-actuated control system.

**Circle No. 195 on Reader Inquiry Card**



## New gear box ready to go for outdoor equipment

Noram introduces a gear box that can be bolted on to standard three-to six-hp engines without modifying the engines for outdoor power equipment.

The Noram gear box has 6:1 gear ratio, enables engines to maintain a normal output capacity of 10-hp, and produces a



torque of 15 ft. lbs. at a lower RPM.

It features an aluminum transmission case, heat-treated, sintered metal gears, and ball-bearing PTO shaft which accepts standard, 3/4-inch crankshafts.

Custom PTO shafts are also available.  
**Circle No. 196 on Reader Inquiry Card**

# We'll keep the pesticide industry from becoming a victim of air pollution.



Ahh, television news in the 90s.

Tabloid journalism has sneaked its way onto the airwaves. And the pursuit of facts seems to have been replaced by the pursuit of ratings.

So the specialty pesticide industry needs a media watchdog that not only watches. But that also takes action.

Fortunately, we have one.

RISE. Responsible Industry for a Sound Environment.

RISE is a coalition of manu-

facturers, formulators and distributors from all areas of the specialty pesticide business.

In addition to promoting environmental stewardship, RISE makes sure the media doesn't report misinformation as fact.

We also hold editorial meetings with media decision-makers. And respond to negative articles or broadcasts that are incorrect. We've been very successful so far. Not surprising considering what

our most powerful weapon is. The truth.

Of course, there's still a lot more work to do. But rest assured, RISE is up to the task.

Because we know if we eliminate air pollution, the pesticide industry can breathe a lot easier.



1156 15th St., N.W., Suite 400,  
Washington, D.C. 20005. ©1995 RISE RISB-0047

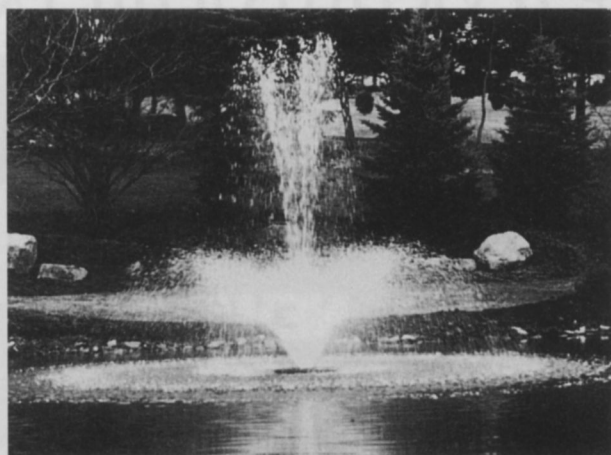
## Aeration series includes three interchangeable patterns

The Fractional Series by Otterbine uses many features from the company's other aeration systems, at a fraction of the cost.

The company describes the units as perfect for small ponds in housing developments, commercial complexes or golf courses. The line of high quality water features includes the "Starburst," "Phoenix" and "Rocket" spray patterns.

The "Phoenix" and "Rocket" patterns can be varied in height and diameter by adjusting the diffuser ring.

The units run on 1/2 hp, and



are made of stainless steel and thermal plastics. Each unit in the fractional series comes with 100-foot of power cable, st/st debris screen and a mini power center as standard features. The power center includes ground fault interrupter and a 24-hour on/off timer. As the motor is cooled by water rather than oil, the unit requires no maintenance.

Each Otterbine aerator system is electrically safety tested and approved as a package by ETL and ETLc.

**Circle No. 197 on Reader Inquiry Card**

## New tall fescue more drought tolerant, darker

Crossfire, the turf-type tall fescue that dominated the top rankings in the National Turf Trials a few years ago, will soon be available in a significantly improved reselection from Pickseed West, Inc.

The new variety, Crossfire II, is ideal for hotter areas of the country. Recently, Crossfire II was the top variety out of 91 tested in Mississippi turf trials, and number two in Georgia.

Crossfire II also ranked number one for versatility in the 1993 Rutgers trials.

The improved Crossfire II has an increased endophyte level of more than 80 percent. It features a darker green color, improved turf quality and better drought tolerance than its predecessor.

**Circle No. 198 on Reader Inquiry Card**

## Mulch leaves two ways with versatile mowers

The Cushman 6150 riding rotary mower is available with a choice of two leaf mulching kits.

The kit's heavy-duty screens adapt to either 35- or 41-inch cutting decks, and encase the blades for uniform mulching. Rear rubber deflectors help to evenly distribute the mulched leaves, thus improving the appearance of the grass.

The 6150 is designed to be used on large turf areas. Its "wing" configuration allows for cutting with one, two or all three decks. The mower also features a zero turning radius, four-wheel drive and a 7-acres/hour capacity.

**Circle No. 199 on Reader Inquiry Card**

## Flowable fungicide more concentrated

Sostram Corporation, maker of the Echo line of fungicides, has introduced a new, more concentrated Echo 720 Turf



and Ornamental flowable chlorothalonil fungicide for broad-spectrum disease control, including dollar spot, large brown patch, red thread, Helminthosporium leafspot and melting out.

With 6 lbs./AI/gal., Echo 720 delivers more disease control activity per ounce with less material applied per treated acre.

The more concentrated formulation provides better cost effectiveness thanks to labor-saving handling, less storage space requirements and fewer container disposal problems. Echo's technical chlorothalonil exceeds 99 percent pure active ingredients.

**Circle No. 200 on Reader Inquiry Card**

## Software provides degree-day forecasts

Spectrum Technologies, Inc. has an affordable Growing Degree Days software program that helps track growth factors needed to determine approximate growth stages.

You also can make better management decisions regarding fertility, insects, diseases and weeds.

The software program is designed to help the turf manager eliminate manual calculations and growing degree-day record keeping. Use the speed and convenience of your computer to determine growing degree days.

Users can select up to six different crop and field combinations, along with their respective lower and upper temperature thresholds. To operate, simply indicate the particular planting date and click the "calculate" button to display degree days for that period.

**Circle No. 201 on Reader Inquiry Card**

## Pump priming, pressure control for PTO pumps

The 6010 Series control unit from UDOR USA, Inc. is designed for easy pump priming and pressure control.

The 6010 is used for controlling pressure and by-pass on positive displacement pumps up to 18 GPM and 300 PSI.

The control was originally designed for gasoline engines, but can now be used on PTO-driven pumps.

Body parts and seals are suitable for use with most insecticides and herbicides.

**Circle No. 202 on Reader Inquiry Card**

### T&O herbicide controls variety of weeds

Fusilade II, a turf and ornamental herbicide from Zeneca Professional Products, has been approved by the Environmental Protection Agency.

Fusilade II is a selective post-emergence herbicide for controlling a wide variety of annual and perennial grass weeds.

Fusilade II controls grass in ornamental nongrassy plants, trees, shrubs and ground covers grown in commercial greenhouses and nurseries. It can also be used to suppress and eventually control some problem grasses in commercial turf areas, as well as turfed areas on golf courses.

Fusilade II controls virtually all grass weeds in non-crop areas, including airports, electric transformer stations and sub-stations, around buildings, on roadsides and on rights-of-way areas.

Circle No. 203 on Reader Inquiry Card

### New formulations for natural biostimulants

Roots 2 and ironRoots 2 biostimulants have replaced their original "parent" products this year, according to Roots, Inc. The company describes the new products as more useful and effective than its first biostimulants.

ironRoots 2 is a natural biostimulant that contains four percent fully-chelated iron phosphate-citrate for improved stress tolerance and appearance in turfgrass and acid-loving plants.

Roots 2 enhances growth—plants grow greener with larger roots—and also greatly improves fertilizer efficiency, allows reduced nitrogen rates, provides greater stress resistance and improves both growth rates and aesthetic values of turf.

Circle No. 204 on Reader Inquiry Card

### Barrier lotion protects skin from poison ivy

Trailside Poison Ivy Barrier protects the skin from exposure to poison ivy infection by forming an invisible non-greasy barrier film. Clinical results show that up to six hours of protection can be provided when used as directed prior to exposure. Lab test data show effective barrier action for as long as 15 hours.

The hydrophillic barrier lotion is the result of years of extensive laboratory and clinical testing.

Circle No. 205 on Reader Inquiry Card

### New turf fungicide has wide control spectrum

Eagle WSP turf fungicide is expected to benefit golf course managers, who need a wide spectrum of disease control, coupled with excellent safety to all types of turf-grasses.

Eagle, which received an EPA registration last spring, is manufactured by Rohn & Haas. In tests, it provided consistent control of brown patch; dollar spot; leaf

spot; melting out and crown rot; leaf smuts; necrotic ring spot or spring dead spot; powdery mildew; red thread; rusts; Septoria leaf spot; summer patch and copper spot or zonate leaf spot.

The new systemic fungicide can be used as a protectant fungicide and also provides post-infection activity. Recommended rate is 0.6 oz./1000 sq. ft.

Circle No. 206 on Reader Inquiry Card

## PRETTY AS A PICTURE



### INTRODUCING AQUASHADOW

**AQUASHADOW™** is a blended colorant formulation in convenient **WATER SOLUBLE PACKAGES** that highlights your water for a picture perfect landscape.

**AQUASHADOW™**  
LAKE AND POND COLORANT

- Convenient no-mess application.
- Concentrated/one pack treats 326,000 gallons.
- Beautifying/tints water a stable blue color.

**CUTRINE-PLUS**  
ALGAEICIDE / HERBICIDE

From **ab** Your trusted source of quality products for water quality.

**AQUASHADE**  
POLYMER-BASED LAKE AND POND COLORANT

**ab applied biochemists**

A division of Great Lakes Biochemical Co., Inc.

6120 West Douglas Ave. • Milwaukee, WI 53218 • Dial 1-800-558-5106

Circle No. 105 on Reader Inquiry Card

## Irrigation controller allows for system expansion in changing site conditions

The new XF-416 Controller from the Irrigation Division of The Toro Company allows commercial and large residential users to expand their irrigation systems as site demands change.

The flexibility is provided by advanced modular technology; four-station expansion modules upgrade the standard, eight-station controller to 12 or 16 stations as needed.

The controller is easy to program and

maintain, and features four, fully-independent irrigation programs that can be assigned to any station.

The Toro SurgePro system safeguards each module against lightning damage and power surges.

In addition, a built-in sensor port can be used with the Toro Rain Switch to prevent water waste by allowing automatic system shutdown.

**Circle No. 207 on Reader Inquiry Card**



## Fungicide available as water-soluble packets

DowElanco announces the introduction of Rubigan 50WSP fungicide in water-soluble packets.

Rubigan 50WSP contains new Worker Protection Standard information, personal protective equipment specifications and per-acre rate specifications.

Each case of Rubigan 50 WSP contains four handy, non-tear pouches. Each pouch can be resealed and contains eight, pre-measured, water-soluble packets.

The water-soluble packaging ensures faster dissolve time and optimum tear strength of individual packets for easier use and applicator protection.

Rubigan 50WSP prevents and treats all major patch disease. It is the only fungicide on the market guaranteed to provide 80 percent control of summer patch, necrotic ring spot and Fusarium blight.

Rubigan 50WSP controls 14 difficult diseases, including dollar spot, anthracnose, snow mold and spring dead spot.

**Circle No. 208 on Reader Inquiry Card**

## Service provides wind speed, humidity maps

Golf Communications, Inc. now provides subscribers with wind speed maps and humidity maps.

Three humidity maps are included in the kits. The first updates every three hours and includes a color display of humidity in 10 percent increments.

This package also includes two humidity forecast maps showing expected conditions for the next two forecast periods.

Forecast periods are at 6 a.m., 12 p.m.

and 6 p.m.

Weather Express wind maps include three different wind map displays.

The first map updates hourly and includes a color display of wind speeds plus arrows which depict wind direction.

Two wind forecast maps show expected conditions for the next two forecast periods.

**Circle No. 209 on Reader Inquiry Card**

## Bermudagrass turf established from seed

Farmers Marketing released NuMex Sahara, the first turf-type bermudagrass from seed, in 1989.

In 1995, Farmers Marketing has released Princess bermudagrass, developed by the same plant breeder, Dr. Arden Baltensperger of New Mexico State University.

Princess is a very dark green color that compares favorably with the sterile hybrid bermudagrass varieties.

It is dense and very fine-textured compared to most bermudas, according to the company.

Princess seed will be available in limited quantities later this year.

**Circle No. 210 on Reader Inquiry Card**

## Label expands control of indoor, outdoor pests

Thanks to a new, EPA-approved label, Ciba Turf & Ornamental Products' Citation can be used to control several damaging insects in most indoor and outdoor nursery settings.

Citation's new label includes control of Dipterous leafminers and fungus gnats in landscape ornamentals, container-grown

ornamentals, house-grown ornamental bedding plants and ornamental crops and interiorscapes.

Citation may also be used to control shore flies on greenhouse-grown ornamental crops and interiorscapes.

The previous label only included control recommendations for leafminers on container-grown chrysanthemums in greenhouses.

Citation's new label includes a number of the most popular landscape plants, including gerbera daisy, baby's breath, impatiens, marigold, poinsettia and verberna, among others.

**Circle No. 211 on Reader Inquiry Card**

## Irrigation software for residential, commercial

Rain Bird's RainCAD-Lite is a new Irrigation & Landscape Design software program made for use by residential and light commercial design/build contractors and irrigation designers.

RainCAD Lite includes estimate and proposal functions, and performs a complete material takeoff.

Automated sprinkler placement can be diagrammed along a line or curve, or in square and triangular patterns.

An automated lateral line and main line pipe sizing and design enhancement tools such as total system flow calculations are included.

RainCAD Lite comes complete with more than 200 customized symbols for sprinklers and accessories plus choices for title blocks, north arrows, hatching patterns and line styles. An on-line tutorial and on-line help screens are included.

**Circle No. 212 on Reader Inquiry Card**

# TECHNICAL REFERENCES

## for Landscape Professionals



### Interior Landscape Design

by Nelson Hammer, ASLA

LSM-BK-800 .....\$65.00

This reference discusses the basic principles of interior landscape design and covers such topics as tree planting, designing large

planting beds, balcony plantings, cost estimation, natural and electric lighting, irrigation and more. Particularly useful to those in the field are five case studies which demonstrate design and construction processes for an interior landscape project. 288 pages, hardcover.



### Urban Trees A Guide for Selection, Maintenance, and Master Planning

by Leonard J. Phillips, Jr.

LSM-BK-801 .....\$37.00

This complete guide to urban tree care and planning covers

everything from new methodologies for cataloging existing trees to selecting the right species for your climate and site to running a high-power, cost-saving maintenance program and much more. Landscape architects, urban foresters, municipal administrators and students will learn how to develop effective municipal street tree master plans, take street tree inventory, choose the best trees for a community, care for trees and promote public awareness. 273 pages, hardcover.



### The Process of Landscape Design

by Seamus W. Filor

LSM-BK-802 .....\$40.00

Five completed projects

illustrate the general principles followed by landscape architects in developing designs from concept to implementation. Each case includes a summary of the principles which generated the design; a study of the architect's response to special conditions; a description of the stages of development; and an assessment of performance since completion. The five projects cover: landscape planning, urban regeneration, new town development, university campus and recreational development. 160 pages, hardcover.



### Landscape Architecture

#### A Manual of Site Planning and Design

by John Ormsbee Simonds

LSM-BK-803 .....\$73.00

Written for landscape architects, architects, planners

and engineers, this book features descriptions of proven procedures, includes useful charts, tables, checklists and teaching diagrams, and offers innovative ideas and fresh thoughts of direct application in the design studio, drafting room and field. 331 pages, hardcover.



### Turfgrass Science and Management

by Robert D. Emmons

LSM-BK-805 .....\$37.50

Intended for turfgrass managers and students, this text discusses the establishment and maintenance

practices used by successful turfgrass managers and reviews relevant scientific theory as well as practical management skills. 451 pages, hardcover.



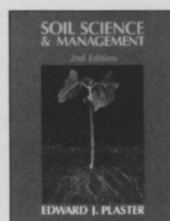
### Landscape Principles & Practices

4th edition

by Jack E. Ingels

LSM-BK-806 .....\$29.95

This introductory text leads the landscaping student from the basic principles of landscape design and graphics, through methods of installation and maintenance, to the business methods of beginning the business, bidding and cost estimating. 401 pages, hardcover.



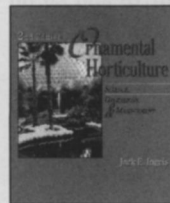
### Soil Science & Management

Second Edition

by Edward J. Plaster

LSM-BK-804 .....\$39.95

This text introduces the reader to the soil and water resources of the United States, presents soil science theory as it applies to soil use by the grower, shows how soil is used by farmers and horticulturists, and covers the basics of soil and water conservation. An instructor's guide, summaries of each chapter and review questions are provided. 514 pages, hardcover.



### Ornamental Horticulture Science, Operations & Management 2nd Edition

by Jack E. Ingels

LSM-BK-807 .....\$40.95

Offering a balanced study of ornamental horticulture as an applied science, a craft, a profession and a business, this introductory text reviews plant structure, the role of soil, the plant classification system, growth regulators, reproduction, and pests and their control. Floral design; the interior use of plants; landscape design, installation and maintenance; turf selection, establishment and maintenance; and techniques of plant propagation are also examined, along with the floriculture, nursery and landscape industries, greenhouse and nursery production techniques and business considerations. 554 pages, hardcover.



### Landscape Plants

#### Their identification, Culture, and Use

by Ferrell M. Bridwell

LSM-BK-808 .....\$49.95

The text is invaluable in assisting students, nursery workers, landscape architects, educators and others in identifying landscape plants. More than 450 ground covers, vines, shrubs, trees, grasses, palms and bamboos are depicted in full color with physical descriptions, geographic growth zone information, pest problem data and other details. 560 pages, hardcover.



### Managing Turfgrass Pests

by Thomas L. Watschke, Peter H. Demoenen & David J. Shetlar

LSM-BK-766 .....\$69.95

Emphasizing the philosophy of minimizing pests through well-defined and organized cultural practices, this book contains specific recommendations for a number of pests. Turfgrass weeds, diseases, insects, invertebrates and vertebrates are described and cultural, biological, mechanical and chemical solutions are provided. 361 pages, hardcover.

Call 1-800-598-6008 • Outside the U.S. call 216-826-2839

ADVANSTAR MARKETING SERVICES • 7500 Old Oak Blvd. • Cleveland, OH 44130

CODE: 949027

## Midsize mowers powered by new V-twin engines

Two new Toro midsize models are built with state-of-the-art V-Twin 18 and 20 hp Kohler Command series overhead valve

engines.

The durable, high quality engines feature hydraulic valve lifters which keep the engines virtually maintenance free, according to Toro ProLine.

Stellite exhaust valve and cast-iron cylinders extend engine life.

**Circle No. 213 on Reader Inquiry Card**



## Engine features electronic ignition

The Pro OHV engine from Robin America features electronic ignition, electronic low oil warning system, dual element air cleaner and convenient spark plug inspection window, all as standard equipment.

Cast iron cylinder liner, forged steel crankshaft and "two ball-bearing system design" are other durable features.

**Circle No. 214 on Reader Inquiry Card**

## Wetting agents improve water infiltration

Aquatrols introduces a totally new wetting agent chemistry specifically developed to outperform all wetting agents applied through irrigation systems.

InfilTRx will improve the penetration and infiltration of water through thatch and into the soil.

InfilTRx will also enhance turf quality, and provide better aeration and drainage,

according to the company.

InfilTRx can be applied as a spray to supplement other water management programs.

InfilTRx is available in 55 gallon drums and five gallon containers.

**Circle No. 215 on Reader Inquiry Card**

## Auto-feed feature new for brush chippers

Vermeer Manufacturing Company introduces the Auto Feed II for its disc-style brush chippers.

Designed to enhance Vermeer's disc-style chippers, the exclusive Auto Feed II system will be added to the 625, 935, 1230 and 1250 brush chippers.

The Auto Feed II system is geared toward making brush chipping more efficient and productive for commercial tree service firms, landscape contractors, lawn care operations, golf courses, municipalities and public works departments.

**Circle No. 216 on Reader Inquiry Card**

# ADVERTISER INDEX

101 AgrEvo USA Co. ....	13G
102 AgrEvo USA Co. ....	19G
125 AgrEvo USA Co. ....	19G
103 AgrEvo USA Co. ....	7G
104 American Cyanamid ..	4G-5G
123 American Cyanamid ..	4L-5L
105 Applied Biochemists .....	35
111 Ciba Geigy .....	11G
Dow Elanco .....	Cv3
Dow Elanco .....	13
Dow Elanco .....	15
112 Fox Valley Systems .....	14
113 GMC Truck .....	6-7
114 John Deere .....	10L-11L
115 Lofts Seed .....	Cv4
116 Merck AgVet Division .....	5
106 Miles .....	9G
107 Miles .....	14L-15L
124 Miles .....	16G-17G
108 Miles .....	37
109 Miles .....	7L
110 Miles .....	10-11
117 Nextel Communications	33
118 Otterbine Barebo .....	21
119 Pennington Seed .....	17
120 Tee 2 Green .....	Cv2
121 Valent U.S.A. ....	3G
122 Wells Cargo .....	13L

This index is provided as an additional service. The publisher does not assume any liability for errors or omissions.



# LANDSCAPE MANAGEMENT

"WE KNOW YOUR TURF"

**FOR ADVERTISING INFORMATION AND AD PLACEMENT, CONTACT:**  
**Stephanie Stiggers-Smith, 216-891-2719**  
 1-800-225-4569 (ext. 719)  
 Fax 216-826-2865

Every month the Market Showcase offers the readers of Landscape Management a complete and up-to-date section of the products and services you're looking for. Check it out every month, or you might miss out.

For all ads under \$250, payment must be received by the classified closing date. VISA, MASTERCARD, & AMERICAN EXPRESS accepted. Send to: Advanstar Marketing Services, 7500 Old Oak Blvd., Cleveland, OH 44130.

Send blind box replies to: Landscape Management, 131 W. First St., Duluth, MN 55802 (Include box number in address.)

## EQUIPMENT FOR SALE

**TRUCKCRAFT**



**PICKUP INSERT DUMPER**  
 For FREE brochure, call toll free 24 hr.  
**1-800-755-3867**  
 WE SHIP NATIONWIDE

## FOR SALE

### COMMERCIAL INSURANCE FOR LAWN CARE FIRMS "GREEN INDUSTRY SPECIALISTS"

M.F.P. Insurance Agency is dedicated to providing comprehensive insurance programs to the Green Industry at competitive prices. We back up this dedication with a staff of professionals who understand every facet of your business, from marketing to customer service. We know how to properly insure your company whether you're a sole proprietor or a multi-state operation.

Just as your customers look to you for lawn care advice, people come to us for insurance advice because they do not want to become insurance experts themselves. If you want good advice, the right coverage, and competitive rates, please contact:

Richard P. Bersnak, President

Jill A. Leonard, V.P.

**1-800-886-2398**  
**FAX: 614-221-2203**

**M.F.P. Insurance Agency, Inc.**  
 50 West Broad Street, Suite 3200  
 Columbus, OH 43215-5917

Circle No. 301 on Reader Inquiry Card

**LANDSCAPE DESIGN KIT 3**  
 48 rubber stamp trees, shrub, & plant symbols & more  
 1/8" scale. Stamp sizes range 1/4" to 1 3/4"  
**\$77.50 + \$5 s/h VISA/MasterCard**, or mo's shipped  
 next day. Checks delay shipment 3 weeks. No cod's  
 CA add 7.75% Sales Tax.

**AMERICAN STAMP CO.**  
 12290 Rising Rd., Dept. LM955  
 Wilton, CA 95693  
 Voice/FAX (916) 687-7102

**FREE** LANDSCAPE DESIGN BOOK WITH YOUR LDK 3 ORDER  
 Free offer expires 30 days from publication date

**FREE Landscape Design Book with your LDK order.**

# LANDSCAPE MANAGEMENT

## MARKET SHOWCASE & CLASSIFIED ADVERTISING

For all ads under \$250, payment must be received by the class-ified closing date. We accept VISA, MASTERCARD & AMERICAN EXPRESS. Credit card orders are accepted by phone.

ISSUES	CLOSING DATES
July	6-9
August	7-11
September	8-9
October	9-11
November	10-10
December	11-10

(Call rep for date confirmation.)

**SEND AD COPY WITH PREPAYMENT TO:**  
 Stephanie Stiggers-Smith  
 Landscape Management  
 7500 Old Oak Blvd.  
 Cleveland, OH 44310

for more information, call Stephanie:  
 1-800-225-4569  
 or 216-891-2719  
 Fax: 216-826-2865

## Creative curb

Concrete Curb & Landscape Border Equipment



Create Beautiful Concrete Borders & Curbs for Less than Half the Cost of Conventional Methods!

- Add on to your services/profits
- Low maintenance/easy to use
- Self-propelled, electric or gas powered
- Create various shapes and sizes
- Durable curbing is freeze/thaw tolerant

23042 Alcalde #C • Laguna Hills, CA 92653  
 (714) 587-8488 • (800) 292-3488 • FAX: (714) 951-2656

## Tulip Bulbs at Wholesale Prices

Colorblend™ collections of spectacular bulbs for early, mid, and late seasons.

**Finest Quality and Size**

**FREE CATALOG 1-800-877-8637**  
**SCHIPPER & CO. USA** P.O. Box 7584  
 Dept. 14075 Greenwich, CT 06836

## MISCELLANEOUS



Build it yourself! Save \$\$\$!  
 • 5000 Sizes • All Steel

Call Today For Brochure and Price Quote  
**HERITAGE BUILDING SYSTEMS**  
**800-643-5555**

## THE TREE SAVER

### YOU CAN STAKE UP TO 20 TREES PER HOUR WITH THE TREE SAVER™ TREE STAKE KITS

Our unique rubberized tree anchoring system saves time & money, grows stronger root systems and helps protect you from injury liability. Call today for a **FREE** product sample.

**1-800-833-5323**

Lawson Landscape Products,  
 A Division of  
 Lawson & Lawson, Inc.  
 35 Industrial Drive,  
 P.O. Box 1784,  
 Martinsville, IN 46151

## TREE STAKE KITS

For all ads under \$250, payment must be received by the classified closing date. We accept Visa, Mastercard & American Express. Credit card orders are accepted by phone. Send ad copy with payment to **Stephanie Stiggers-Smith**, LANDSCAPE MANAGEMENT, 7500 Old Oak Blvd., Cleveland, OH 44130 or call 216-891-2719. Fax Number 216-826-2865.

**BOX NUMBER REPLIES:** Mail box number replies to: LANDSCAPE MANAGEMENT, Classified Ad Department, 131 W. 1st St., Duluth, MN 55802-2065. Please include box number in address.

## HELP WANTED

**MAINTENANCE MANAGERS & SUPERVISORS:**

One of the nation's largest and fastest growing full service landscape companies has an immediate need for experienced maintenance managers and superintendents, as well as entry level maintenance supervisors in the Midwest, Southwest, Mid-Atlantic, Northeast and Southeast states. The company seeks energetic, team oriented college graduates with proven leadership, communication and interpersonal skills. The company offers full-time positions, excellent advancement opportunities and exceptional compensation and benefits with an industry leader celebrating more than 50 years of uncompromising customer service. For immediate confidential consideration, please send or fax your resume to: The Brickman Group, Ltd., Corporate Office, 375 S. Flowers Mill Road, Langhorne, PA 19047, 215-757-9630, EOE 7/95

**Searching for the right employee? Time for a new position?** Contact **Florapersonnel, Inc.**, international search and placement firm for the landscape, irrigation industries and allied trades. **Confidential. Fee paid by employer.** Florapersonnel, Inc., 2180 W. 434, Suite 6152, Longwood, FL 32779-5013. Phone: (407)682-5151 Fax: (407)682-2318. TF

**GREENTREE, INC.** one of Atlanta's leading commercial Landscape Management Companies is seeking highly qualified, motivated people to supervise maintenance teams. Candidate must be organized, exhibit strong supervisory skills and have solid knowledge of Southeast region landscape management. **GREENTREE OFFERS GROWTH OPPORTUNITY, TOP INDUSTRY SALARY, BENEFIT PACKAGE, AND 401K.** Submit resume with salary history: **GREENTREE, INC.**, Human Resources Department, 1640 Roadhaven Drive, Stone Mountain, GA 30083, Tele: (404)938-8080, Fax: (404)934-0919. 7/95

**LANDSCAPE DESIGN:** Great opportunity for experienced landscape designers. Come join the design/sales team of **Hermes Landscaping**. A leader in the industry since 1965, **Hermes** provides landscape and sprinkler design services for both residential and commercial properties. Bachelor's degree, strong customer service skills and 2-4 years experience in design and sales preferred. Benefits provided. If interested please call Tracy Strohm or send resume to: **Hermes Landscaping**, 12421 Santa Fe Trail Drive, Lenexa, KS 66215, (913)888-2400. EOE 7/95

**LANDSCAPE MANAGER** Landscape Division Manager for a multi-unit commercial landscaper. Strong proven management skills and 3 years industry experience required. Business or industry degree required. This is a senior management level position, only individuals with proven track records will be considered. All replies are strictly confidential. Reply: **Landscape Manager**, Southern Tree & Landscape Companies, P.O. Box 7067, Charlotte, NC 28241. 7/95

## EQUIPMENT FOR SALE

**PIPE LOCATOR INEXPENSIVE!** Locates, traces underground drain, water pipe lines of clay, PVC, ABS, steel, cement. Finds sprinklers, valves, clogs. Bloch and Company, Box 18058, Cleveland, Ohio 44118. (216)371-0979. TF

Brower 7 gang hyd. lift \$4,800; Jacobson 7 gang hyd. ran lift \$6,800; Spin-Grinder, Supreme leader, also does relief grinds and bedknives \$6,500; and Toro GM-3 Greens mower \$1,300. Call (215)598-7155. 7/95

1986 Finn hydroseeder, pull type 2 axles, never used since reconditioned. 150 ft. of hose \$7,000. (317)883-5245 or (317)883-7839. 7/95

**SPYDERS-** New/Used/Rebuilt. Full line of replacement parts and update kits. Kubota, Ruggerini, and Kohler engines & parts. Nichols-Fairfield torque hubs. We repair and rebuild Spyder hydraulic pumps and motors. **FAST SERVICE.** Call or write: **Mobile Lift Parts Inc.**, 5402 Edgewood Rd., Crystal Lake, IL 60012. (800)397-7509, FAX (815)455-7366. 12/95

**REINCO HYDROGRASSERS** and power mulchers in stock. **Opdyke Inc.**, (Philadelphia Area) 215-721-4444. 12/95

**BUCKET TRUCKS:** Straight Stick, Corner Mount and Knuckle Boom Cranes. Brush Chippers: New Morbark Disc and Drum Style, New Rayco Stump grinders. Best prices anywhere. Used Chippers: Asplundh, Morbark, etc. 2 to 8 usually in stock. Sprayers, Dumps, Stakes, Log Loaders, Crew Cab Chip Box Dumps, Railroad Trucks, 50 in stock. Sold as-is or reconditioned. We also buy your surplus equipment. **Opdyke's**, Hatfield (Philadelphia Area). 215-721-4444. 12/95

## WHOLESALE DISTRIBUTOR

Needed to market environmentally friendly, liquid, slow-release fertilizer products direct from manufacturer. **Ken Franke**, P.O. Box 123, Plato, MN 55370; 800-832-9635. 7/95

## POSITIONS WANTED

**LANDSCAPE MANAGEMENT CONSULTANT** Consider an alternative to hiring a senior-level manager. Reduce costs and ensure employee loyalty through training in systems and procedures that will best help your business succeed. With nineteen years experience in landscape maintenance in Texas, Florida and the Midwest, I've helped companies grow, stabilize their work force, increase profits, and develop processes to enhance the company's performance. Estimating, scheduling, budgeting, crew organization and effectiveness, profitability and job quality are evaluated and a plan for improvement developed. **T.D. MORLAND/HBMC** (608)832-6401 7/95

## EDUCATIONAL OPPORTUNITIES

**NOW...LEARN PROFESSIONAL LANDSCAPING AND GARDENING AT HOME!** Accredited program provides thorough training in all phases of commercial and residential landscaping. Diploma awarded. Free brochure describes program and opportunities in detail. Call 1-800-326-9221 or write Lifetime Career Schools, Dept: LF0115, 101 Harrison Street, Archbald, PA 18403. 12/95

**MOVE UP IN THE GREENS INDUSTRY.** Two year AAS degree program in Golf Course Superintending, Irrigation Management, Landscape Contracting and Park Supervision. Fully accredited, VA approved, expanded learning facilities, new equipment. Graduate placement assistance available. For information contact Golf Course Operations/Landscape Technology Department, Western Texas College, Snyder, TX 79549. 8/95

## FOR SALE

**BUCKET TRUCK:** Hi Ranger 65', 57', 50'. Sky-workers with chip boxes. Asplundh bucket trucks with chip boxes. Asplundh brush chippers. Bear 55 gal. sprayers. **Pete Mainka Enterprises**, 633 Cecilia Drive, Pewaukee, WI 53072. 800-597-8283. 12/95

## POSITIONS WANTED

**LANDSCAPE MANAGEMENT CONSULTANT** Consider an alternative to hiring a senior-level manager. Reduce costs and ensure employee loyalty through training in systems and procedures that will best help your business succeed. With nineteen years experience in landscape maintenance in Texas, Florida and the Midwest, I've helped companies grow, stabilize their work force, increase profits, and develop processes to enhance the company's performance. Estimating, scheduling, budgeting, crew organization and effectiveness, profitability and job quality are evaluated and a plan for improvement developed. **T.D. MORLAND/HBMC** (608)832-6401 7/95

Reserve Ad Space  
in the next issue of  
**Landscape  
Management**

Call **Stephanie Stiggers-Smith:**  
216-891-2719  
or fax your copy to her at  
216-826-2865