



IF THIS IS WHAT YOU THINK PRIMO DOES TO YOUR GRASS,



IT'S TIME WE SET YOU IN THE RIGHT DIRECTION.

Lots of people know that Primo® regulates the growth of grass. But not as many understand how.

Primo doesn't stunt turf. Instead, it redirects the grass's growth.

Unlike other growth regulators, which actually stop cell division, grass treated with Primo will still be actively growing, producing the same amount

of new cells. Only now the cells will be smaller. Smaller cells mean a more compact plant.

Nutrients that otherwise would be needed above ground are now channeled into the roots, giving you a thicker stand, and up to 25% more root mass. So the grass can more efficiently take up water and nutrients.

And Primo is foliar-absorbed, so there's less risk of inconsistent uptake.

The result? The easiest-to-manage, best-looking turf you can imagine.

It's easy to see why all roads lead to Primo.



GREEN INDUSTRY SHOWCASE

Lawn, tree and landscape software includes support

The "Lawn Genius," from Genius Software Development Corporation is easy to use and pays for itself.

A personalized "Lawn Genius" program fits your specific business needs.

With this program, you can automatically route and schedule jobs with less paperwork. You decide which customers get billed and when.

Comprehensive manuals and on-screen help and telephone support are also available.

The "Lawn Genius" will help customize services for individual customers, print invoices, statements, work schedules and more than 100 reports.

A built-in mail merge function is included for making selective mailings.

Complete pesticide tracking and reporting is included, and the program will handle any method of billing.

Three versions are available, for trial runs, small business and networks.

Circle No. 192 on Reader Inquiry Card



Software package includes accounts receivable

Dillaware, Inc. has written a software program to eliminate billing by hand.

The Billing Clerk does it in less than half the time and automatically keeps up with receivables. The software simplifies billing, tracks which customers owe, and for how long, and produces professional invoices and statements.

The Billing Clerk includes a regular billing option for special jobs, such as tree trimming and tree removal.

Circle No. 191 on Reader Inquiry Card

Software designed with help of landscape pros

The TRIMS Grounds Management Software provides landscape managers with instant access to information, and lets them make better management decisions.

TRIMS Grounds Management Software is a simple solution to the paperwork and record keeping required for today's landscape management professional.

Features include:

- ease of use;
- "point & shoot" mouse operation;
- integrated operation;
- informative graphics;
- modular construction.

Prior computer experience is not required.

Scrolling, mouse operation and function keys make TRIMS easy to use for both the beginner and advanced user.

Simple prompts and help screens guide the user through the necessary steps for data entry and reporting.

Circle No. 193 on Reader Inquiry Card

Solar-powered trim mower needs little care

Solar Power International, Inc. has introduced what it calls the world's first solar-powered lawn mower for the consumer market.

The result of extensive research and development, as well as on-site testing, the Solar Mower uses the same solar cell technology that drives NASA's space program.

Three state-of-the-art solar panels, comprised of 72 highly efficient, individual silicon solar cells, charge the all-weather Solar Mower, even as you mow.

The company says the mower is patented in 26 countries.

The mower is UL approved and exceeds all OPEI and ANSI safety standards.

The mower carries a four-year warranty against manufacturer's defects.

The mower has a 21-inch cutting radius.

Maximum decibel level is 72.

The mower will run for 1.5 hours on a charge.

Circle No. 194 on Reader Inquiry Card

Reel mower features on-demand four-wheel drive

The Toro Company's Reelmaster 3500-D is designed for a broad range of mowing applications over smooth and rolling terrain.

The versatile triplex mower features on-demand four-wheel drive and a 36-hp diesel engine for optimum traction and power. Variable reel speed control allows for precision cutting.

Toro's optional, on-demand, four-wheel drive means an over-running clutch activates the system when operators need extra traction most. A Peugeot 36-hp engine provides greater reliability and longevity, as well as the muscle to climb and cut simultaneously. The Reelmaster 3500-D incorporates Toro's exclusive reel speed adjustment knob that lets the operator infinitely adjust reel.

Circle No. 195 on Reader Inquiry Card

'Mini-prill' formulation new to fertilizer product line

Vicksburg Chemical Company has developed 12-0-42 K-Power controlled-release mini-prill blend fertilizer with controlled-release nutrients for use on greens and close-cut turf.

This product provides 50 percent controlled-release nitrogen and potassium from polymer-coated potassium nitrate.

According to national sales manager Michael Larisey, the easy-to use mini-prill formulation combines a desirable nitrogen-to-potassium ratio with the benefits of slow-release nutrients.

Circle No. 196 on Reader Inquiry Card

Mulcher used for controlling erosion at smaller job sites

The Reingo Power Mulcher Model TM-JR is a compact machine to cover straw or hay over residential or hard-to-reach sites.

A powerful, 18-hp engine drives a patented straight-through beater system designed for easy maintenance.

Circle No. 197 Reader Inquiry Card

Results Don't Lie.



Don't be fooled by competitive claims or isolated tests. In trial after trial, Terra® Thalonil™ stood up strong to the competition.

The fact is, for solid protection against dollar spot, brown patch, snow mold, algal scum and many, many more costly diseases—you can't buy better than Thalonil.



With Thalonil you get the leading fungicide *and* a fair deal at the same time. This season, talk to Terra for Thalonil and all of your professional product needs.



From Terra

THALONIL™ STICKS.

Always read and follow label directions.

Trial results summary available on written request.

Terra International, Inc., P.O. Box 6000, Sioux City, Iowa 51102-6000, 1-800-831-1002

Circle No. 135 on Reader Inquiry Card

PRODUCT REVIEW

Front mower available with 4WD

Kubota Tractor Corp. has introduced the GF1800 front mower with 4-wheel drive, designed for enhanced maneuverability in a variety of mowing conditions.

Featuring a unique Foot Control 4WD and an independent hydraulic PTO, the 18-hp GF1800 changes easily between two and four-wheel drive, and offers increased mobility on slopes and in soft ground conditions.

The 4WD GF1800's unique two-pedal design allows the operator to switch easily between drives by simply stepping on either the 4WD Lock Pedal or 4WD Release Pedal. This Foot Control 4WD can be activated "on the go," permitting quick response to changing ground conditions.

Circle No. 198 on Reader Inquiry Card



New, nimble gloves cover worker protection standard

Covering hands with chemical-resistant gloves when working with pesticides is the law under the EPA's Worker Protection Standard. The problem is, the gloves can make it difficult to change sprayer tips and nozzles.

Gempler's new, 100 percent Nitrile gloves provide protection without sacrificing dexterity.

The Nitrile gloves are recommended over rubber for chemical work, says the company, and resist damage from acids, caustics, solvents, grease, punctures and tears.

The embossed, anti-slip grip holds tips and nozzles tightly without impeding finger movement. Unlined and flock-lined pairs come individually packaged.

Circle No. 199 on Reader Inquiry Card



Apply fungicide to trees with injection system

Chipco's Aliette Injectable brand fungicide is available for use in trees through an innovative micro-injection system from the Arborx company.

The technology lets the operator inject the material directly into the tree.

Consequently, those who provide pro-

fessional tree care can deliver an immediate self-contained dose of the fungicide's disease-control properties.

According to Chipco, the technology addresses the issue of potential applicator exposure to chemicals and can also be useful in saving urban trees in situations where high pressure spraying is not a practical option.

Circle No. 200 on Reader Inquiry Card

Weather satellite service keeps watch for lightning

Golf Communications, Inc. has offered GolfLink—called the first complete golf weather and information satellite service—to the green industry.

GolfLink is designed to keep golf professionals, superintendents and players informed of the latest information in the golf industry.

GolfLink provides news from national and local golf and superintendent associations, tips from the pros, new product information and much more.

The most exciting feature about GolfLink, according to the company, is the weather and lightning information provided to all subscribers. GolfLink has the most complete weather and lightning package that is offered to anyone in the golf industry.

This system offers 12 different maps from national and regional radar maps; jet stream, temperature and soil temperature maps; action radar maps showing the movement of weather front; high and low forecasts and any other type of information that relates to weather.

All of this information is updated several times an hour.

The Lightning Strike maps can help warn golfers of any lightning strikes in the area.

All information is available 24 hours each day, seven days a week.

Cost is a \$250 one-time fee, plus \$58.25 per month. A two-month trial offer costs \$159.

Circle No. 201 on Reader Inquiry Card

Root feeder ideal for shallow surface situations

The Green Garde division of H.D. Hudson Manufacturing Company has added a heavy-duty surface root feeder to its line.

The Green Garde HD-8 is ideal for shallow surface feeding with liquids and is ruggedly designed and built with fully replaceable parts for long, professional use. For greater in-field convenience, the feeder fits Green Garde JD9-C and JD-9CT spray guns.

Circle No. 202 on Reader Inquiry Card



KUBOTA RUNS CIRCLES AROUND THE COMPETITION

Kubota's FZ2100 and FZ2400 with Zero Diameter Turn (ZDT) run circles around the competition.

The power in the innovative FZ front mowers starts with 20 or 24 horsepower Kubota liquid cooled diesel engines and continues with the Auto Assist Differential (AAD) drive system that automatically switches between 2WD and 4WD to match operating conditions. With AAD, you get extra power to maneuver easily in wet grass and muddy conditions with the front wheels rotating freely through the tightest turns. The FZ can turn completely around in one spot without damage to the turf, cutting way down the time spent on labor-intensive hand trimming jobs.

For productivity and versatility, Kubota's F-Series front mowers can't be beat. The F2400 is 4WD and 24 horsepower, while the F2100 is available in 2WD or 4WD, and has 20 horsepower. Both have Kubota diesel engines, and are equipped with hydrostatic rear-wheel power steering for easy handling. A wide selection of Performance Matched Implements provide the versatility. They include triplex reel, rotary, flail and mulching rear discharge mowers, rotary broom, leaf blower, snowblower, and front blade. Roomy operator's deck, tilt steering wheel, and excellent visibility increase comfort and productivity.

Your Kubota dealer can show you the complete Kubota turf equipment line with the power and maneuverability to run circles around the competition.



Kubota®

For information write to:

Kubota Tractor Corporation,

P.O. Box 2992, Dept. LM, Torrance CA 90509-2992

Financing available through Kubota Credit Corporation.

PRODUCT REVIEW

Roll-type aerator added to product line

Classen adds the new model TA-19 self-propelled, roll-type core aerator to its line of turf equipment.

The TA-19 is powered by a 4-hp Honda engine and covers up to 24,000 sq. ft. per hour.

Other features include:

- a rugged, one-piece frame with a removable weight bar;
- user-friendly handle and controls.

The TA-19 will easily fit through a 30-inch wide area.

Circle No. 203 on Reader Inquiry Card



Marker dye helps improve spray accuracy, visibility

Three new marker dye products to help applicators improve the visibility and accuracy of their agrichemical applications have been marketed by Loveland Industries.

Marker Dye WSP is a water-soluble packet of blue dye added to the mixing tank water for agricultural, horticultural, forestry and roadside applications of pesticides and liquid fertilizers.

With Marker Dye WSP, the applicator sees exactly what areas have been treated, thereby avoiding costly overlaps as well as skips and off-target applications.

Marker Dye WSP dissolves quickly and completely and leaves no residue to clog nozzles.

Circle No. 207 on Reader Inquiry Card

Foliar fertilizer improves turf color, spreads nutrients

Terra International introduces the foliar fertilizer Six Iron to its line of professional turf products.

Six Iron is a ferrous sulfate, urea and sulfur combination that improves the color of turfgrass.

Terra reports that foliar applications of Six Iron distribute iron and nitrogen more rapidly to the turf than do soil applications.

Six Iron is available in 2.5-gallon jugs and 55-gallon drums.

Circle No. 204 on Reader Inquiry Card

Self-propelled field striper has a 3-year warranty

The Brite Striper 2000 now carries what Pioneer Manufacturing says is the longest warranty in the industry: three years.

Three large, 13-inch wheels provide smooth rolling on rough surfaces.

An extra-large, 12-gallon, stainless steel tank reduces the number of delays for refilling. A Thomas-diaphragm-type compressor prevents costly and time-consuming problems associated with oil mixing and marking paint.

Circle No. 206 on Reader Inquiry Card

New sliding topper for specific cargo vehicle

Reading Body Works has added a new optional feature, the Sliding Top, to the line of accessories available for the off-road Mitsubishi Mighty Mits vehicles.

The Sliding Top is a 14½-inch high rear taligate, and weathertight protection to the cargo bay. The Sliding Top is easy to open and close.

Circle No. 208 on Reader Inquiry Card

Broader label designation for ornamental herbicide

The Environmental Protection Agency has approved an expanded label for Pendulum WDG herbicide from American Cyanamid Company.

The new label enables landscapers, nursery growers, lawn care operators and golf course superintendents to use the product over the top of an additional 70 species of ornamental plants.

With the new label, Pendulum WDG herbicide may be used to control grasses and broadleaf weeds in more than 260 species of trees, shrubs, flowering beds and ground covers.

The product contains pendimethalin, a leading pre-emergence turf herbicide.

Circle No. 205 on Reader Inquiry Card

Company makes vertical shaft engine

Briggs & Stratton Corporation's new Quattro engine provides economical and dependable power and low-cost differentiation in price-sensitive markets.

The powerful, 4-hp, 10 cubic inch engine offers a distinctive, contemporary-styled appearance. Features include a large rewind and mechanical compression release for easier starting.

Other features include Magnetron electronic ignition, foam element air cleaner, and a two-year consumer warranty.

An extended oil fill and automotive type dipstick makes it easy to accurately check and service engine oil.

Circle No. 209 on Reader Inquiry Card



PRODUCT REVIEW

New line of stone seats, tables, benches for outdoors

An expanded line of cast stone site tables and benches has been introduced by Dura Art Stone, bringing to 15 the number of standard tables it makes for picnic, game, recreational and general outdoor use, including a variety of shapes in traditional and art deco styles.

All tables have matching seats or benches that are either freestanding or an integral part of the design, as with picnic tables.

All styles of table offer the beauty and permanence of top quality cast stone in a choice of 18 standard colors and six finishes.

Most designs include wheelchair access by modifying the table height in compliance with Americans with Disabilities Act standards.

Other standard options include umbrella holes for tables and a variety of installation mounts to meet different application needs.

Circle No. 210 on Reader Inquiry Card

Fertilizer spreaders have many options, sizes

Precision cam gauge metering on Gandy 10 Series spreaders give accuracy and simplicity in gravity flow application of fertilizer, granular material and seeds.

Standard powder angles can be installed on the internal rotors for added agitation when applying granulated lime.

Each spreader has a cold-roll steel bottom with stainless steel slide which are precision mated at the factory for accuracy.

Hopper capacity is approximately 100 lbs./linear ft., with hoppers available in six-, eight- and 12-foot sizes in four models—trailer model, 3 pt. hitch end-wheel drive model and 3-pt. hitch or implement-mounted with 12-volt motor or hydraulic motor drive.

Circle No. 211 on Reader Inquiry Card

NEXT MONTH:

**LM Reports on
rotary mowers**

Stump grinder lightweight, with anti-vibration feature

A portable new lightweight stump grinder with the latest in anti-vibration and decompression valve technology is available from Husqvarna.

The Model 272S uses an 8-inch steel blade with tungsten carbide tips. According to the company, the grinder is ideal for tree services, landscape contractors and companies that offer stump grinding services.

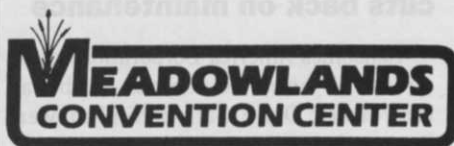
Circle No. 212 on Reader Inquiry Card

NEW JERSEY LANDSCAPE

'95

*"Meeting the Needs of the
Green Industry Professional"*

18TH ANNUAL TRADE SHOW and CONFERENCE



**AT HARMON MEADOW
SECAUCUS, NEW JERSEY**

**WEDNESDAY
MARCH 1, 1995
8:30 AM - 4:30 PM**

*TRADE SHOW:

New Jersey Landscape offers time & money savings to the landscape businessperson who is truly concerned about his/her company. See over 130 companies exhibiting everything you need to be successful in today's economy.

- Turf Equipment
- Concrete Pavers/Walls
- Snow Plows/Salters
- Landscape Materials
- Construction Equipment
- Trucks/Truck Bodies
- Horticultural Supplies
- Custom Fencing
- Trailers
- Power Equipment
- Nurseries
- Leasing Companies
- Irrigation Supplies
- Annual/Perennial Growers
- Computer Software/Services
- Fertilizers
- Professional Uniform/
Clothing Companies
- Insurance Companies
- Pesticides
- Sod Farms/Growers

*CONFERENCE:

Seminars presented by Rutgers University Cooperative Extension Service. DEP recertification credits offered. Special Guest Speakers.

Sponsored by: Bergen County Landscape Contractors Assoc.
Associated Landscape Contractors of New Jersey

For information: Call (201) 664-6310 or (201) 236-8476, or FAX (201) 664-7014

PRODUCT REVIEW

'Boom' applicator greatly reduces spray product drift

Environmental Technologies has introduced the "ultimate" walking boom spray applicator that virtually eliminates spray drift to ensure the spray goes and stays where you want it. The enclosed design also improves operator and environmental safety while reducing public complaints.

The Drift Guard WB70 is a 3-section boom that follows ground contours to ensure accurate spray application.

The wings fold for easy transport and storage. The walking boom also comes standard with a nozzle flow monitor, pressure gauge and digital speedometer.

An optional "chariot" unit lets you load and transport the sprayer.

Circle No. 214 on Reader Inquiry Card

W-2 form report generator available for tax needs

Armor Systems has the Report Generator W-2 Form Format software.

The format, which requires the use of the Premier Report Generator and Payroll modules, is perfect for large and small operations that incorporate Advance EIC Payments, have employees in multiple states or have special W-2 printing needs.

By using the new format, companies with employees in two states and localities, or those who have special printing needs can eliminate multiple print runs.

In addition, this format package reports Advance EIC Payments amounts in a separate box on W-2 forms, so employees will no longer have to fill in the Advance EOC Payments by hand.

Circle No. 215 on Reader Inquiry Card

New container reduces exposure to products

Monsanto Company is coming out with a new 2-1/2 gallon herbicide container that it says eliminates the foil seal, and features an innovative no-glug, no-drip design.

The patented container reduces user exposure to herbicides and makes herbicide handling easier and faster.

The no-glug pouring effect is achieved with a large, "air-flow" handle designed with a special split inner opening, which

lets air flow back into the container at the same rate the liquid empties, to create a smooth, fast-pouring action.

A special no-drip lip keeps contents from running down the container's exterior while pouring, and a large handle makes for easy carrying and lifting.

Circle No. 216 on Reader Inquiry Card.

New sprayer/foamer line features high flow rate

Eagle Power Products announces its new line of portable, heavy-duty sprayers and foamers. All units have a steel tank construction ranging in size from 2.6 to 13.2 gallons.

The sprayers are quickly charged and capable of 170 psi of pressure, with high flow rate.

Individual replacement parts are also available.

Circle No. 217 on Reader Inquiry Card

New hydrostatic mower cuts back on maintenance

Ransomes America Corporation introduces a new, Ransomes Bob-Cat Hydrostatic Drive walk-behind mower. Designed to cut up to 24.6 acres in an eight-hour day, the mower features an infinitely variable number of ground speeds for optimum productivity.

The hydrostatic drive's transmission features dual Sunstrand/Hydrogear pumps and Ross wheel motors. Fingertip levers control independent power to each wheel for moving, stopping, power turning and reverse. The result is exceptional maneuverability in confined areas. Controls for blade engagement, throttle and wheel tracking are conveniently located on the panel and handlebars.

Kohler, Kawasaki and Vanguard air-cooled engines are available.

Circle No. 218 on Reader Inquiry Card

**Want information
on a product? Just circle the
number on the Reader Service
Card.**

ADVERTISER INDEX

102	Agrevo	14-15
103	Agrevo.....	37G
104	Akzo Salt.....	39L
105	American Cyanamid	7
106	American Cyanamid.....	24L-25L
140	American Cyanamid	24G-25G
107	Ciba	61
108	Ciba.....	23G
109	Cub Cadet	29L
110	Dalen.....	23L
111	Dixie Chopper.....	44L
112	Dixon Industries	43L
	Dow Elanco Insert.....	17-20
	Dow Elanco	51
	Dow Elanco	53
	Dow Elanco	55
	Dow Elanco	57
113	Genius Software	40L
114	Grasshopper Co.....	41
117	Howard Price	Cv3
	ISK Biosciences	28a-28f
141	John Deere	33L
118	John Deere	30-31G
	John Deere (Insert)	36A-D
120	Kubota Tractor.....	65
115	Lesco.....	27G
122	Lesco	27L
123	Lofts	Cv4
124	Melroe	59
125	Miles	34-35G
126	Miles.....	4-5
	New Jersey Landscape	67
127	Oregon Tall	50
128	Prime Line	52
129	Riverdale Insert	45-48
130	Scag Power	35L
131	Scotts Co	33G
132	Tee 2 Green.....	Cv2
133	Terrabiotics	39G
134	Terra Int'l.....	11
135	Terra Int'l.....	63
136	Toro.....	13
137	Valent.....	43G
138	Walker	31L
139	Wells Cargo.....	36L

This index is provided as an additional service. The publisher does not assume any liability for errors or omissions.



Compendium of Ornamental Foliage Plant Diseases

by A.R. Chase

92 pages, softcover

LSM-BK-415

\$30.00



Turf Managers' Handbook

by W.H. Daniel & R.P. Freeborg

437 pages, hardcover

LSM-BK-110

\$39.95



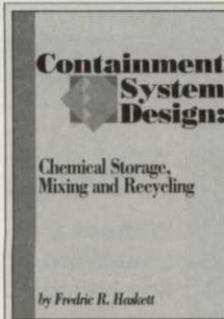
Landscape Problem Management

by Balakrishna Rao

153 pages, softcover

LSM-BK-102

\$39.95



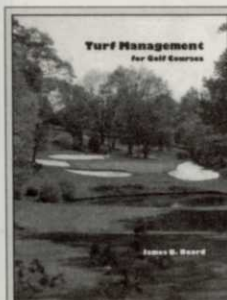
Containment System Design:

Chemical Storage, Mixing and Recycling

by Fredric R. Haskett

LSM-BK-200

\$74.95



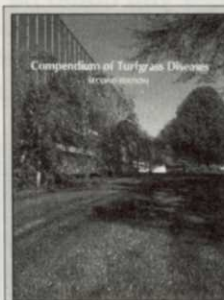
Turf Management for Golf Courses

by James Beard

642 pages, hardcover

LSM-BK-615

\$77.00



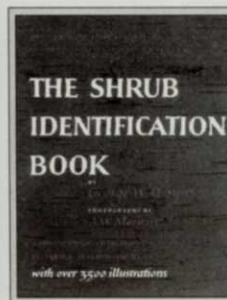
Compendium of Turfgrass Diseases

by Richard Smiley,
Peter Dernoeden &
Bruce Clark

128 pages, softcover

LSM-BK-650

\$30.00



THE SHRUB IDENTIFICATION BOOK

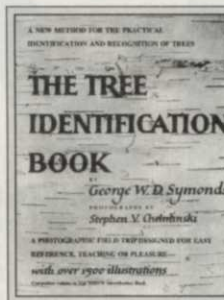
The Shrub Identification Book

by George Symonds

379 pages, softcover

LSM-BK-720

\$19.50



THE TREE IDENTIFICATION BOOK

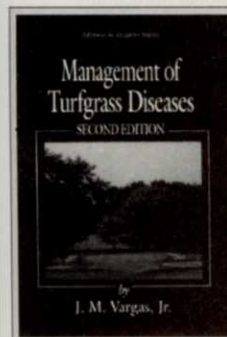
The Tree Identification Book

by George Symonds

272 pages, softcover

LSM-BK-750

\$17.50



Management of Turfgrass Diseases

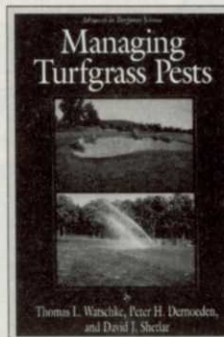
Management of Turfgrass Diseases

by J.M. Vargas, Jr.

294 pages, hardcover

LSM-BK-764

\$59.95



Managing Turfgrass Pests

Managing Turfgrass Pests

by Thomas L. Watschke,
Peter H. Dernoeden &
David J. Shetlar

361 pages, hardcover

LSM-BK-766

\$69.95

Call 1-800-598-6008

Outside the U.S. call 216-826-2839

Advanstar Marketing Services • 7500 Old Oak Blvd. • Cleveland, OH 44130

CODE: 949095

Every month the Market Showcase offers the readers of Landscape Management a complete and up-to-date section of the products and services you're looking for. Check it out every month, or you might miss out.

LANDSCAPE MANAGEMENT

"WE KNOW YOUR TURF"

FOR ADVERTISING INFORMATION AND AD PLACEMENT, CONTACT:
Stephanie Stiggers-Smith, 216-891-2719
 1-800-225-4569 (ext. 719)
 Fax 216-826-2865

For all ads under \$250, payment must be received by the classified closing date. VISA, MASTERCARD, & AMERICAN EXPRESS accepted.

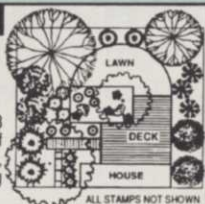
Advanstar Marketing Services, 7500 Old Oak Blvd., Cleveland, OH 44130.

FOR SALE

FREE BOOK OFFER

LANDSCAPE DESIGN KIT 3

1/8" scale set contains: 48 rubber stamp symbols of trees, shrubs, accents, rocks, hedge, railroad tie, stepping stones, and stamp pad.



ALL STAMPS NOT SHOWN

FREE LANDSCAPE DESIGN BOOK WITH YOUR LDK 3 ORDER.

\$77.50 + \$5 s/h VISA/MasterCard, or mo's shipped next day. Checks delay shipment 3 weeks. NO COD's. CA only add 7 3/4% sales tax.

AMERICAN STAMP CO.
 12290 Rising Rd., Dept. LM95L
 Wilton, CA 95693
 Voice/FAX (916) 687-7102

Free offer expires 30 days from publication date

COMMERCIAL INSURANCE FOR LAWN CARE FIRMS

"GREEN INDUSTRY SPECIALISTS"

M.F.P. Insurance Agency is dedicated to providing comprehensive insurance programs to the Green Industry at competitive prices. We back up this dedication with a staff of professionals who understand every facet of your business, from marketing to customer service. We know how to properly insure your company whether you're a sole proprietor or a multi-state operation.

Just as your customers look to you for lawn care advice, people come to us for insurance advice because they do not want to become insurance experts themselves. If you want good advice, the right coverage, and competitive rates, please contact:

Richard P. Bersnak, President

Jill A. Leonard, V.P.

1-800-886-2398

FAX: 614-221-2203

M.F.P. Insurance Agency, Inc.
 50 West Broad Street, Suite 3200
 Columbus, OH 43215-5917

Circle No. 301 on Reader Inquiry Card

EQUIPMENT FOR SALE

Lawn Sprinkling Cable Laying

Without a Line-Ward line laying machine you could be missing the best buy on the market!!



- Moves On Tracks, (Not Wheels), For Superior Traction
- No Restoration
- Up to 16" Depths
- 800 LB

Since 1972



Boring Attachment Available

Fast Parts Delivery & Service



Line-Ward Corp.
 157 Seneca Creek Road
 Buffalo, New York 14224
 Fax: (716) 674-5334

Phone: (716) 675-7373 / (800) 816-9621

TRUCKCRAFT



PICKUP INSERT DUMPER
 For FREE brochure, call toll free 24 hr.
 1-800-755-3867
 WE SHIP NATIONWIDE

SOFTWARE



LAWN ASSISTANT II

#1 Software for the Lawn & Tree Care Industry

FREE 140 PAGE Information Booklet!

1-800-422-7478 810-360-LAWN

Real Green Computers
 8246 Goldie Street, Walled Lake, MI 48390

Circle No. 300 on Reader Inquiry Card

EDUCATIONAL OPPORTUNITIES

CAREER TRAINING IN HORTICULTURE!

New York Botanical Garden offers a two year program of practical field work and academic classes in BOTANY • HORTICULTURE • LANDSCAPE DESIGN

Write or Call...

School of Professional Horticulture,
 New York Botanical Garden, Bronx, NY 10458
 (718) 817-8797

Place your Classified Ads now!
 Call Stephanie Stiggers-Smith at 216-891-2719