

# GREEN INDUSTRY SHOWCASE

## New mower features larger cutting deck, 20-hp engine

The ZTR 560 from Dixon Industries, Inc. features a 60-inch cutting deck, with a powerful 20-hp Kohler engine.



The mower's drive system uses twin hydrostatic units with hydro gear drive. It features a large capacity reservoir, separate fans, and a charge pump to actively cool the hydraulic fluid, a feature important for commercial users.

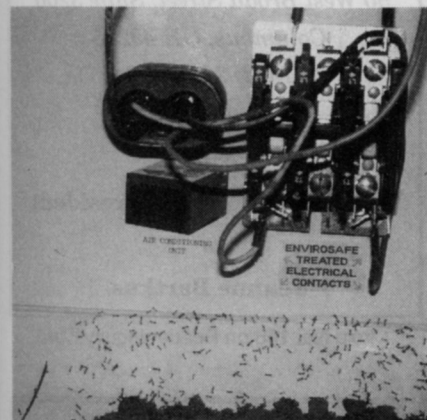
The 560 features a zero turning radius, for quicker mowing.

The unit is built with a tilt-up body, which allows instant and easy access to the fluid tanks, control adjustments, hydrostats and gear drive.

**Circle No. 192 on Reader Inquiry Card**

## Teflon the secret to new spray-on insect barrier

Envirosafe is a new, non-pesticide, safe Teflon barrier spray product available for use on golf courses.



The product can be used wherever crawling insects create problems around people or equipment. Spray the product on

and the Teflon coating stops insects from crawling farther.

Envirosafe spray can be used on boots, gloves and tool handles and sprayed around the contact areas of electrical equipment. According to Envirosafe Solutions Corporation, Envirosafe saves money in reduced repair bills for equipment, medical and medication bills for workers and reduced pesticide application.

The Teflon barrier will last for years as long as it's not scratched or abraded, according to the company.

**Circle No. 193 on Reader Inquiry Card**

## Half-ounce cap makes for easier product measure

New from DowElanco in 1993 is the one-ounce container cap for Gallery 75 Dry Flowable pre-emergence herbicide.

The container cap measures one-half ounce of Gallery, enough herbicide to treat 1,000 sq. ft. and prevent broadleaf weeds for six to eight months.

Users simply remove the cap and pour. In the interest of safety and accuracy, the company warns that the cap is to be used only to measure Gallery or other Dow-Elanco products.

Gallery contains the new chemical compound isoxaben, which allows Gallery to prevent the growth of 46 different broadleaf weeds. It can also be used in most established cool- and warm-season turf-grasses and in more than 400 field-grown and 236 container-grown ornamentals.

**Circle No. 194 on Reader Inquiry Card**

## Accounting software brings key information together

Armor Systems, Inc. of Maitland, Fla., has developed Summit Management Information, which can consolidate Premier Accounting Software information into concise screen and report formats.

The Armor Premier modules that interact with Summit are General Ledger, Accounts Payable, Accounts Receivable, Inventory Control, Purchase Orders, Point of Sale, Billing, Order Entry, Job Cost and Time Billing.

Consolidating the information in these modules with Summit will give top management a more timely perspective of important data, essential for day-to-day

operations. Summit uses 63 pre-defined data elements, which allow the user to custom-design screen and report formats.

**Circle No. 195 on Reader Inquiry Card**

## Give turf that much needed sodium of potash, low salt

Great Salt Lake Minerals Corporation's new Turf Blend line of sulfate of potash products was created especially for high-grade lawns, golf greens and fairways and offers the lowest salt index of any commonly used potassium sources on the market.

During periods of pronounced heat, cold and wear, low-salt potassium is good for roots and turf.

The company's secret lies in its solar evaporation and extraction process, which produces potash in its most effective sulfate form.

According to Great Salt Lake, Turf Blend products have been proven to produce less leaching losses than potassium chloride or potassium nitrate.

**Circle No. 196 on Reader Inquiry Card**

## New 23-hp mower features direct drive wheel motors

The 23-hp Hustler 4100 mower from Excel features a dual-hydrostatic drive system with independent pumps and direct



drive wheel motors. According to Excel, the drive concept eliminates the need for high maintenance chains, sprockets and transaxles.

The Hustler 4100 can be matched with any one of Excel's deck options including the 60-inch or 72-inch 3-way decks which offer the option of side discharge, rear discharge or mulching.

**Circle No. 197 on Reader Inquiry Card**

# MARKET SHOWCASE

RATES: \$105 per column inch for 1x insertion; \$100 for 3x insertion; \$95 for 6x insertion; \$90 for 9x insertion; \$85 for 12x insertion (one inch minimum). Frequency based on calendar year. For ads using a Reader Inquiry Number, add \$30 to the total cost of the ad per issue. For ads using a second color standard red, blue, green or yellow only, add \$65 to the total cost of the ad per issue.

Send ad copy with payment to: Susan Ramseth, LANDSCAPE MANAGEMENT, 7500 Old Oak Blvd., Cleveland, Ohio, 44130, or call (800) 225-4559 ext. 742 outside Ohio; (216) 891-2742 inside Ohio; FAX (216) 826-2685.

## SOFTWARE

**SUPERSCAPE**



SuperScape Management system offers the landscape professional the following:

- \*Ease of use
- \*Reduced support costs
- \*Reduced training costs
- \*Excellent management info
- \*Large time savings
- \*Increased sales

Benefits too numerous to list. Simply the best software in the industry. Don't buy until you call.

1-800-580-5880

SI SoftQuest, Inc.

**SOFTWARE**

Circle No. 250 on Reader Inquiry Card

## Next Month

Reserve this space for your ad in the Market Showcase

**Classified Advertising is**

- ✓ EASY
- ✓ EFFECTIVE
- ✓ ECONOMICAL!

## LAWN ASSISTANT

# 1 # 1



To get a FREE 90 page information booklet on the #1 software for the lawn and tree care industry

Call Toll Free:  
1-800-422-7478

Real Green Computers  
1970 Winner Street, Walled Lake, MI 48390

Circle No. 251 on Reader Inquiry Card

## TRIMS

MANAGEMENT SOFTWARE FOR LANDSCAPE AND LAWN CARE CONTRACTORS

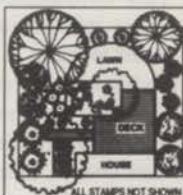
CUSTOMER MANAGEMENT  
ACCOUNTS RECEIVABLE  
ACCOUNTS PAYABLE  
GENERAL LEDGER  
PAYROLL

Call or write today for your FREE Demo Disk and Literature to see what TRIMS can do for you!

LABB SYSTEMS/SOFTWARE  
6018 EAST OSBORN ROAD  
SCOTTSDALE, AZ 85251  
(800)733-9710

Circle No. 252 on Reader Inquiry Card

## BUSINESS OPPORTUNITIES



LANDSCAPE DESIGN KIT 3 SAVES YOU TIME

48 rubber stamp symbols: trees, shrubs, rocks, step stones, vine, & more. 1/4-1 3/4 in. dia

\$74.95 - \$4.50 sh

CA orders add 7 3/4% tax

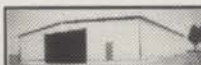
AMERICAN STAMP CO.

12290 Rising Rd., Dept. 1192

VISA Wilton, CA 95693

ALL STAMPS NOT SHOWN MasterCard Phone (916) 687-7102

## COMMERCIAL EQUIPMENT



30'x40'x10'  
\$4,177

BUILD IT YOURSELF AND SAVE MONEY. 5000 SIZES, ALL STEEL. CALL TODAY FOR BROCHURE AND PRICE QUOTE.

HERITAGE BUILDING SYSTEMS

800-643-5555

## LANDSCAPERS' SUPPLY CORP.

The Best Prices - Guaranteed!



- Engines, equipment, commercial mower parts and more!
- Get your FREE catalog today. Call toll free...

1-800-222-4303

1-914-429-8300 (IN NEW YORK)

## FOR SALE

## COMMERCIAL INSURANCE

for

## LAWN CARE OPERATORS

M.F.P. Insurance Agency, Inc.

50 West Broad Street, Suite 3200

Columbus, OH 43215

(614) 221-2398

Contact:

Richard P. Bersnak, President

or

Jeanne Bartkus

Circle No. 188 on Reader Inquiry Card

**Landscape Management Market Showcase**



# CLASSIFIEDS

MARKET  
MANAGEMENT

## EQUIPMENT FOR SALE

## POSITIONS WANTED



**KNOWLEDGE IS POWER.** Every day, Advanstar opens up a world of knowledge, becoming the prime source of information that you need for success — through leading publications serving diverse business and professional markets...productive expositions that deliver quality audiences...and sharply focused database marketing services. Look at your world in a whole new light. *Advanstar. Serving business' need to know.*



PUBLICATIONS • EXPOSITIONS • DATA SERVICES  
7500 Old Oak Boulevard, Cleveland, Ohio 44130 216-243-8100 800-949-9049

**RATES:** \$1.25 per word (minimum charge, \$40). Bold face words or words in all capital letters charged at \$1.50 per word. Boxed or display ads: \$105 per column inch-1x (one inch minimum); \$100-3x; \$95-6x; \$90-9x; \$85-12x. (Frequencies based on a calendar year). Agency commissions will be given only when camera-ready art is provided by agency. For ads using blind box number, add \$20 to total cost of ad per issue. Send ad copy with payment to Susan Ramseth, LANDSCAPE MANAGEMENT, 7500 Old Oak Blvd., Cleveland, OH 44130 or call 216-891-2698. Fax Number 216-826-2865.

**BOX NUMBER REPLIES:** Mail box number replies to: LANDSCAPE MANAGEMENT, Classified Ad Department, 120 W. 2nd St., Duluth, MN 55802. Please include box in address.

## POSITIONS WANTED

### FREE CLASSIFIED AD

To all "**POSITION WANTED**" Classified Advertisers!

- Maximum 40 words
- Maximum 2 issues

Offered as an industry service - Let LANDSCAPE MANAGEMENT help you with your employment needs. For more information contact:

**Susan Ramseth**  
**LANDSCAPE MANAGEMENT**

7500 Old Oak Blvd., Cleveland, OH 44130  
216-891-2742-Phone 216-826-2865-Fax

Turf IPM position sought. Position could involve research, scouting, etc. Master's degree in turf IPM. Hard working, but desire a position in the northeast. Resume upon request. Timothy Abbey, 3419 Tulane Drive #24, Hyattsville, MD 20783. 301-422-1549. 2/93

## BUSINESS FOR SALE

**FOR SALE:** Our company is selling all existing landscape maintenance and construction contracts, we now have in our files for the 1993 season. These accounts are located in the north and northwest Illinois suburbs. All list, personal contacts, addresses, phone numbers, bidding information past and present, etc., will have to be sold before March 1, 1993. All accounts are either commercial, individual, or corporate headquarters and will be sold as a package and not partially. If you are interested in more details send your letter to: Pro-Corp., P.O. Box 52, Lincolnshire, Illinois 60069-0052. 2/93

Cemetery For Sale: 15 acre cemetery 1 hour Metro D.C. in W. Va. For information contact John Thompson. RE-MAX. 301-739-4800. 2/93

## EQUIPMENT FOR SALE

**PIPE LOCATOR INEXPENSIVE!** Locates, traces underground drain, water pipe lines of clay, PVC, ABS, steel, cement. Finds sprinklers, valves, clogs. Bloch Company, Box 18058, Cleveland, Ohio 44118. (216)371-0979. TF

**LAWN SPRAYING TRUCKS-** \*1976 Chevy-C60, new 366 engine, good rubber, 1250 gal. dual compartment tank, Myers pumping system, dual hose reels. Well maintained. Excellent working truck; \$6,800. \*1977 Chevy-C50, 350 engine, good rubber, 800 gal. tank, hydro pump, single hose reel. Well maintained. Ready to spray. \$4,800. Call Ron @ (410)795-7900. 2/93

## EQUIPMENT FOR SALE

**FOR SALE:** Jacobsen 7 gang Hyd. ram lift. Like new \$12,500. Brower 7 gang Hyd. Lift. Very good cond. \$8,500. Spin Grinder Supreme Leader. Also does relief Grinds and bed knives. Like New with all jigs. \$10,500. (215)598-7155. 2/93

**JACOBSEN HF-15** 7 gang reel mower \$9,500 or trade for other equipment. Delivery available. Call Henry at (405)262-0622. 2/93

**NEW AND USED BROUWER EQUIPMENT:** Mowers - VACS - Fork Lifts - Harvesters - and full line of replacement parts. Contact Ed or Glenn Markham at 1-800-458-3644. TF

**FOR SALE:** 1986 Vermeer three spade mounted on Mack - RD 600, 10 wheeler. Ready to go to work. \$47,500. Day 508-897-7244, evening 508-692-2292. 2/93

**FOR SALE:** Used Brouwer Sod Harvesters. Excellent condition. Ready to go. Call Brian for parts. **HUBER RANCH SOD NURSERY**, Schneider, IN. Phone (800)553-0552. 2/93

**HYDRO-MULCHERS AND STRAW BLOWERS:** New and used. **JAMES LINCOLN CORPORATION**, 3220 S. Jupiter Rd., Garland, TX 75041. (214)840-2440, (800)551-2304. TF

**SPYDERS-** New/Used/Rebuilt. Full line of replacement parts and update kits. Kubota, Ruggerini, Kohler and Onan engines and parts. Nichols-Fairfield torque hubs. We repair and rebuild Spyder hydraulic pumps and motors. **FAST SERVICE.** Call or write: Mobile Lift Parts Inc., 5402 Edgewood Rd., Crystal Lake, IL 60012. (815)455-7363, (800)397-7509, FAX (815)455-7366. 2/93

## EQUIPMENT FOR SALE

**NEW/USED EQUIPMENT AND RENTALS—** Asplundh, Hi Ranger, Holan and Lift-All Forestry Bucket Trucks, Chip Trucks and Chippers. Mirk, Inc., (216)669-2000, 7629 Chippewa Road, Orrville, Ohio 44667. TF

**REINCO HYDROGRASSERS** and power mulchers in stock. Opydke Inc., (Philadelphia Area) 215-721-4444. TF

**BUCKET TRUCKS:** Straight Stick, Corner Mount and Knuckle Boom Cranes. Brush Chippers - New Morbark Disc and Drum Style. New Rayco Stump grinders. Best prices anywhere. Used Chippers - Asplundh, Morbark, etc. 2 to 8 usually in stock. Sprayers, Dumps, Stakes, Log Loaders, Crew Cab Chip Box Dumps, Railroad Trucks, 50 in stock. Sold as-is or reconditioned. We also buy your surplus equipment. Opydke's, Hatfield (Philadelphia Area). 215-721-4444. TF

**BUCKET TRUCK:** Hi Ranger 65', 57', 50'. Sky-workers with chip boxes. Asplundh bucket trucks with chip boxes. Asplundh brush chippers. Bean 55 gal. sprayers. Pete Mainka Enterprises, 633 Cecilia Drive, Pewaukee, WI 53072. 414-691-4306. TF

**Finn Hydroseeders, Mulch Spreaders, Krimpers, Pit Burners, Fiber Mulch & Tackifiers.** New & Used. **Wolbert & Master, Inc.**, P.O. Box 292, White Marsh, MD 21162. 410-335-9300, 1-800-234-7645. TF

## EDUCATIONAL OPPORTUNITIES

**GRAYSON COLLEGE,** Denison, Texas: Two-year technical program in Golf Course and Turf-grass Management. 18-hole golf course on campus. Dormitories, placement assistance, financial aid and scholarships available. Contact: GCC, 6101 Grayson Drive, Denison, TX 75020. 903-463-8653. 5/93

## FOR SALE

**FOR SALE:** Two Brouwer Sod Harvesters, 2,800 hours, 3910 Ford, 18 Inch Rolling, Auto Steer. Delivery Possible. (719) 683-2599. 2/93

**FOR SALE:** Used Foley Reel Sharpener with Lapper. Jacobson Blitzer Units. New and Used Parts. (719) 683-2599. 3/93

**MAKE MORE MONEY** with safe, efficient employees. Free catalog of over 100 professional training videos available from California Polytechnic State University. Perfect for landscape construction and maintenance companies, grounds crews, designers, etc. Call 1-800-235-4146. 6/93



## FOR SALE

Aluminum molds for concrete bird baths and statuary. Various sizes. Call Henry at (405)262-0622. 2/93

**LAWN SEED:** Wholesale. Full line of top quality grasses. Improved bluegrass varieties, tall fescues and fine bladed ryegrasses. We specialize in custom mixing. Olinger Seed Company, 89 Hanna Parkway, Akron, OH 44319. Call collect (216)724-1266. OH, PA, WV, MI, IN. TF

**MEYER Z-52 ZOYSIA SOD FOR SALE. VAMONT AND TUFCOTE BERMUDAGRASS SOD. FORKLIFT DELIVERY. SERVING THE MID-ATLANTIC REGION. OAKWOOD SOD FARM, SALISBURY, MD 410-742-3086. 3/93**

**FOR SALE - 1990 HUSTLER 340:** 3 Way Deck, 1460 Hours, Kabota Diesel, Spare Tires, Maintenance Logs, Very Clean. \$9,800. Call R.J. Zaffer, between 3-9 pm at (716) 248-3443. 2/93

## HELP WANTED

### SALES REPRESENTATIVE

Great opportunity for energetic, self-motivated individual for full-time sales. Interesting and challenging work in So. California for a distributor of specialty agricultural chemicals. PCA licenses and degree in biological science required. Excellent company benefits.

EOE NON SMOKING  
SEND RESUME:

**TARGET  
P.O. BOX 1117  
CERRITOS, CA 90701**

**SALESPERSON** Customer and employee oriented commercial landscape contractor in northwest Chicago suburb seeks an experienced salesperson with construction and property management contacts. Energetic and enthusiastic persons interested in joining the sales team of a quality minded production firm. Call Maureen at Acres Enterprises, Inc. (708)526-4554 or send resume: PO Box 448, Wauconda, IL 60084. Salary commensurate with experience. 2/93

**Searching for the right employee? Time for a new position?** Contact **Florapersonnel, Inc.**, international search and placement firm for the landscape, irrigation industries and allied trades. **Confidential. Fee paid by employer.** Florapersonnel, Inc., 2180 W. 434, Suite 6152, Longwood, FL 32779-5008. Phone: (407)682-5151 Fax: (407)682-2318. TF

### LANDSCAPE SUPERVISOR GROUNDS MANAGEMENT

Progressive Northern NJ Firm seeks outstanding candidate to manage the grounds of a large corporate facility, with a 10 man crew. The right individual will possess a Horticultural degree and have at least 5 years hands-on experience. Excellent written and oral communication skills are required. Competitive salary and full company benefits.

Please forward resume in confidence to:  
PO Box 623, Livingston, New Jersey 07039  
or call Mr. Scott at 201-992-0633. EOE M/F

## HELP WANTED

**BOZZUTO LANDSCAPING COMPANY** - An expanding firm in the Washington, D.C., Maryland and Virginia markets is currently looking for qualified, career oriented professional. Opportunities are available in our commercial grounds maintenance division for foreman, assistant foreman, pesticide foreman, and mechanical positions. Benefits include vacation and sick leave, health care package, disability and retirement. Send resumes to: Thomas W. Davis, 15127 Marlboro Pike, Upper Marlboro, MD 20772, or fax to 301-627-7011. 2/93

**LANDSCAPE MAINTENANCE/SALES:** Established, Full Service Landscape Firm is seeking a highly motivated individual to assist in the continued growth and development of our Maintenance Division. Areas of responsibility would include client prospecting, estimating, sales and scheduling. Must have strong horticultural and sales/estimating background and 3-5 years proven experience in Landscape Management. If you are an aggressive take charge person, willing to work hard for success, please send complete resume along with past work history & salary to: Michael Guerrisi, Guerrisi Landscape Inc., 25 Ridge Ave., Lebanon, PA 17042. 2/93

**LANDSCAPE MAINTENANCE SALES** — Large established landscape, irrigation, and maintenance firm in Tampa Bay area. Experience in bid preparation required. Send resume to P.O. Box 22501, Tampa, FL 33622. 2/93

**LANDSCAPING/OPERATIONS:** Hermes Landscaping, a well established contracting company, is seeking a self-motivated, professional manager to handle the operations of a Commercial Landscaping and Sprinkler Division. Must have a B.S. degree, 2-4 years of experience, people skills and hands-on supervisory experience. Send resume and salary history to: Hermes Landscaping, Inc., P.O. Box 14336, Lenexa, KS 66215. EOE. 2/93

## MARKETING SERVICES

**INCREASE YOUR BUSINESS & KEEP YOUR CUSTOMERS** with a customized, professional newsletter. You choose the articles and title! **FREE** marketing tips and information! **Special introductory offer!** For free sample and details, call TotalControl Inc. (800)432-5528. In Pennsylvania call (215)430-3960. 2/93

## MISCELLANEOUS

**BUSINESS ENVELOPES: FREE CATALOG AND WHOLESALE PRICELIST** of the most often used printed business envelopes in the Green Industry. **STOP** paying printer's retail prices. **CALL TODAY AND SAVE (219)865-8485. 2/93**

**MOWING CONTRACTORS: FREE CATALOG** Commercial mower parts guaranteed to fit Bobcat, Bunton, Exmark, Snapper and Scag. **WHOLESALE PRICING** on blades, belts, filters, pulleys, tires, transmissions and mowing supplies. **SAVE \$\$\$** call toll free **1-800-343-4333. LAWN CARE PARTS** guarantees savings coast to coast. AMX/Visa/Mastercard Accepted. 2/93

## BUSINESS OPPORTUNITIES

### STRATEGIC GUIDE



### "Winning Strategies for Lawn and Landscape Contractors-- A System for Success"

This new business manual contains powerful ideas, strategies and suggestions that cover all aspects of success in this highly competitive industry. Planning now, will reduce stress and help you implement proven techniques that can triple your sales in just one year.

- Learn how to win up to 85% of all your residential and commercial bids while retaining up to 90% of your customers each year.
- Discover proven techniques that can double your clientele in just 2-3 weeks.
- Learn other strategies: hiring and retaining productive employees, powerful management skills, marketing and advertising, equipment management, diversification, education & training, handling business stress before it gets to your family.

Sure to become one of your most important business documents. Only \$59.95, postage prepaid. **Tax deductible. MONEY BACK GUARANTEE.**

Order now. Allow 10-15 days for delivery. Send check or money order to ELC Inc., P.O. Box 9069, Colorado Springs CO 80932. For more information, or to order by VISA or MASTERCARD, call 1-800-748-1113.

## FOR THE 90s

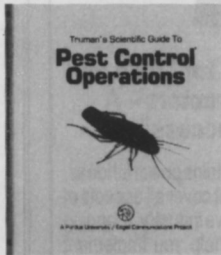
**LET THE GOVERNMENT FINANCE** your new or existing small business. Grants/loans to \$500,000. Free recorded message: (707)448-0330. (OL8) 3/93

**NOW... LEARN PROFESSIONAL LANDSCAPING AND GARDENING AT HOME!** Accredited program provides thorough training in all phases of commercial and residential landscaping. Diploma awarded. Free brochure describes program and opportunities in detail. Lifetime Career Schools, Dept. LF0113, 101 Harrison St., Archbald, PA 18403. 9/93

**Use our  
Blind Box Service  
for  
Confidential  
Results!**

# LANDSCAPE MANAGEMENT BOOKSTORE

## VOLUMES TO BUILD YOUR BUSINESS VOLUME



**TRUMAN'S SCIENTIFIC GUIDE TO PEST CONTROL OPERATIONS**  
 by G.W. Bennett, J. M. Owens, R.M. Corrigan  
 Updated 4th edition. Find answers to hundreds of questions about pest control. Learn sound techniques for pest management programs for hundreds of types of pests. New chapters on urban wildlife, pest control for food plants, specialized facilities and fumigation. Lavishly illustrated, fully indexed. PECO101 - \$69.95



**TURFGRASS MANAGEMENT REVISED**  
 by A.J. Turgeon  
 Third Edition. Covers the latest developments in turfgrass science and technology. Heavily illustrated with dozens of new drawings. Provides specific recommendations for applying the newest pesticides, fertilizers and other materials to combat turfgrass problems. LM225 - \$62.95



**ARBORICULTURE: THE CARE OF TREES, SHRUBS AND VINES IN THE LANDSCAPE**  
 by Richard W. Harris  
 Comprehensive coverage of planting, site analysis, preparation and special planting methods. Includes fertilization, irrigation and pruning, and diagnostic chapters on non-infectious disorders, diseases, insects and related pest management. LM665 - \$63.00



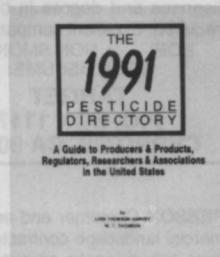
**RESIDENTIAL LANDSCAPE**  
 by Gregory M. Pierceall  
 An excellent reference for design and development of plantings and constructed features for residential sites. Illustrations and actual residential case study examples are used to communicate graphic, planting and design concepts. LM375 - \$66.95



**TREE MAINTENANCE**  
 by Pascal Pirone  
 Sixth edition. The care and treatment of trees, including special sections on abnormalities, diagnosing tree troubles, non-parasitic injuries and assessing the suitability of trees in different environments. LM760 - \$49.95



**TURFGRASS: SCIENCE AND CULTURE**  
 by James Beard  
 Comprehensive basic text and reference source used in many leading university turf programs. Includes findings of current research compiled from more than 12,000 sources. LM630 - \$62.95



**THE 1991 PESTICIDE DIRECTORY**  
 by Lori Thomson Harvey and W.T. Thomson  
 A guide to producers and products, regulators, researchers and associations in the United States. For the person who needs to know everything in the United States pesticide industry. LM500 - \$75.00

### ORDER TODAY! YOUR SATISFACTION IS GUARANTEED!

Yes! Please send me the professional books listed below. If I'm not completely satisfied, I may return them in 10 days for a full refund.

| Book Number and Title | Quantity | Price | Total Price |
|-----------------------|----------|-------|-------------|
|                       |          |       |             |
|                       |          |       |             |
|                       |          |       |             |
|                       |          |       |             |
|                       |          |       |             |

Please allow 3 to 4 weeks for delivery.

Postage and Handling \$ \_\_\_\_\_

Tax (CA, CO, CT, GA, IL, MN, NJ, NY, OH, TX) \$ \_\_\_\_\_

TOTAL \$ \_\_\_\_\_

Name \_\_\_\_\_

Company \_\_\_\_\_

Address \_\_\_\_\_

City \_\_\_\_\_ State \_\_\_\_\_ Zip \_\_\_\_\_

Phone (\_\_\_\_) \_\_\_\_\_

Payment must accompany order  Check Enclosed

Charge my  VISA  MasterCard  American Express

Account No. \_\_\_\_\_ Exp. Date \_\_\_\_\_

Signature \_\_\_\_\_ Date \_\_\_\_\_

Return this coupon with payment to

ADVANSTAR DATA, 7500 OLD OAK BLVD., CLEVELAND, OH 441

Credit Card Orders May Call Toll Free 1-800-225-4569, x839, or fax your order to (216) 891-2726

**Postage and Handling**

Domestic: Add \$5 per order plus \$1 for each additional book ordered.

International: Add \$15 per order plus \$2 for each additional book ordered. 02FP2M



Landscape Mangement...it's all you really need...pass it on...

Landscape Mangement...it's all you really need...pass it on...

Landscape Mangement...it's all you really need...pass it on...

# LANDSCAPE MANAGEMENT

...it's all you really need!

# PASS IT ON!

For 30 years, Landscape Management has been your Green Industry source for Business Management "How-To" Technical Information, and Industry News.

Now that we include Lawn Care Industry's coverage of the LCO segment, you have more reasons than ever to read LM and... **PASS IT ON!**

Your crew, a partner, technicians or even customers... LM's editorial, useful, timely and understandable will help you and other professionals with your work, and in promoting the benefits of healthy attractive turf.



## BUSINESS OPPORTUNITIES

**ARE CHEMICALS KILLING THE CHEMISTRY BETWEEN YOU AND YOUR CUSTOMERS?** If you're not growing, you might want to consider converting to or adding a NaturaLawn Franchise. We are the industry leader in organic-based lawn-care. We offer reduced franchise fees to existing businesses with a minimum of \$50,000 in existing annual lawn care revenue. **NaturaLawn® of America, 1-800-989-5444 (C).** 2/93

## ORGANIC LANDSCAPE MAINT

**LANDSCAPERS** interested in reducing the use of agricultural chemicals! Subscribe to **BUGS Flyer**, the premier environmental landscape quarterly. Discover the latest environmentally sound landscape products, techniques, and resources. Professional subscriptions \$18.00. **BUGS, Dept. LM, PO Box 76, Citrus Heights, CA 95611.** 4/93

## SERVICES

**NEED EMPLOYEES?** We can fill any employment need you may have. We have hard-working, reliable and loyal Mexican workers to fill any job from laborer to foreman. We may also have the professional you have been looking for, from supervisors, architects to managers. Call Bob Wingfield (214) 634-0500. 4/93

Pumps - Wanner D-10 and D-25 Hydra-cell. New, reconditioned parts and complete 24 hour repair service. Call Industrial Services Co., 614-965-4112. New Lawn Care Hose Reel Swivel. 4/93

## SOFTWARE

**TurfWorks™** - Your Best Buy. Version 4.0 just released. Customer/Job Tracking, Automatic Scheduling, Invoicing, Receivables/Cash Application, Monthly Statements, Chemical Usage Tracking, Marketing, Sales Analysis and more. Online help. Affordable price. Send \$4.00 and disk size for demo. Bellanger Group, 50 Clarkson Center, Suite 422, Chesterfield, MO 63017, 314/537-2025. 2/93

Route Manager System for scheduling and accounts receivable record keeping. Serving the Lawn Care Industry since 1982. List price \$350. Fortunate Computers, 46 N. 4th Street, Coplay, PA 18037. 800-275-0620. 12/93

**PLANTS COMPUTER SOFTWARE** offers a comprehensive plant database with over 960 characteristics, including maintenance and disease/pests. Reviewed as one of the best! Call 619-345-7120 for free brochure. 3/93

## WANTED

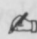
Pull type Toro fairway mowers. Pull type 9 gang Toro frame. Toro Groundmaster 72. Toro Greens-mower. Fairway core pulverizer. Greens type sweeper. Call collect 309-289-4146. 2/93

## Classified Advertising

# ADVERTISER INDEX

| NO. | ADVERTISER                    | PAGE NO. |
|-----|-------------------------------|----------|
| 101 | American Cyanamid.....        | 12-13    |
| 102 | Andersons, The.....           | 31       |
| 103 | BASF Corp.....                | 17       |
| 104 | BASF Corp.....                | 43       |
| 105 | Ciba Geigy/Award.....         | 56-57    |
| 106 | Ciba Geigy/Bonner.....        | 2-3      |
| 107 | Deere & Co., John.....        | 7        |
| 144 | Deere & Co., John.....        | 7        |
|     | Dow Elanco.....               | 2-3      |
|     | Dow Elanco.....               | 66-67    |
| 110 | Echo, Inc.....                | 32       |
| 111 | Growth Products.....          | 47       |
| 112 | Hoechst Roussel.....          | 63       |
| 113 | Honda Power Equipment.....    | 29       |
| 114 | Howard Price.....             | 53       |
| 115 | ISK Biotech Corp.....         | CV3      |
| 116 | Jacobsen Div. of Textron..... | 25       |
| 117 | Koos, Inc.....                | 46       |
| 118 | Lofts Seed, Inc.....          | Cv4      |
| 119 | Manhattan II.....             | 21       |
| 120 | Medalist America.....         | 49       |
| 123 | Mid Dakota.....               | 40       |
| 121 | Miles Inc/Bayleton.....       | 34-35    |
| 122 | Milorganite.....              | 41       |
| 124 | Oregon Tall.....              | 28       |
| 125 | Pickseed West.....            | 15       |
| 126 | Ransomes, Inc.....            | 19       |
| 127 | Ransomes, Inc.....            | 19       |
| 128 | Ritchie Industries.....       | 50       |
| 129 | Rhone Poulenc Co.....         | 39       |
| 130 | Rhone Poulenc Co.....         | 39       |
| 131 | Rhone Poulenc Co.....         | 27       |
| 132 | Rhone Poulenc Co.....         | 27       |
| 133 | Spraying Systems.....         | 42       |
| 134 | Steiner Turf Equip.....       | 48       |
| 135 | Stihl Inc.....                | 37       |
| 136 | Scotts & Sons, O.M.....       | 22-23    |
| 137 | Tee 2 Green.....              | Cv2      |
| 138 | Toro Co.....                  | 33       |
| 143 | Turfco.Mfg.....               | 58       |
| 139 | Valent Corp (Regional).....   | 51       |
| 140 | Walker Mfg Co.....            | 54       |
| 141 | Wells Cargo.....              | 50       |
| 142 | Woods.....                    | 45       |

This index is provided as an additional service. The publisher does not assume any liability for errors or omissions.

 **send a Classified Advertising message...  
...write here.**

(Please Print) \_\_\_\_\_

\_\_\_\_\_  
 \_\_\_\_\_  
 \_\_\_\_\_  
 \_\_\_\_\_  
 \_\_\_\_\_  
 \_\_\_\_\_

1. Number of insertions: (circle) 1 3 6 12 TF (Till Forbid)
2. Start with (month) \_\_\_\_\_ issue. (Copy must be in by 1st of month preceding).
3. Amount enclosed: \$ \_\_\_\_\_ (To keep our rates as low as possible, payment must accompany order)

SIGNATURE \_\_\_\_\_ DATE \_\_\_\_\_

NAME \_\_\_\_\_ COMPANY \_\_\_\_\_

ADDRESS \_\_\_\_\_

CITY \_\_\_\_\_ STATE \_\_\_\_\_ ZIP CODE \_\_\_\_\_

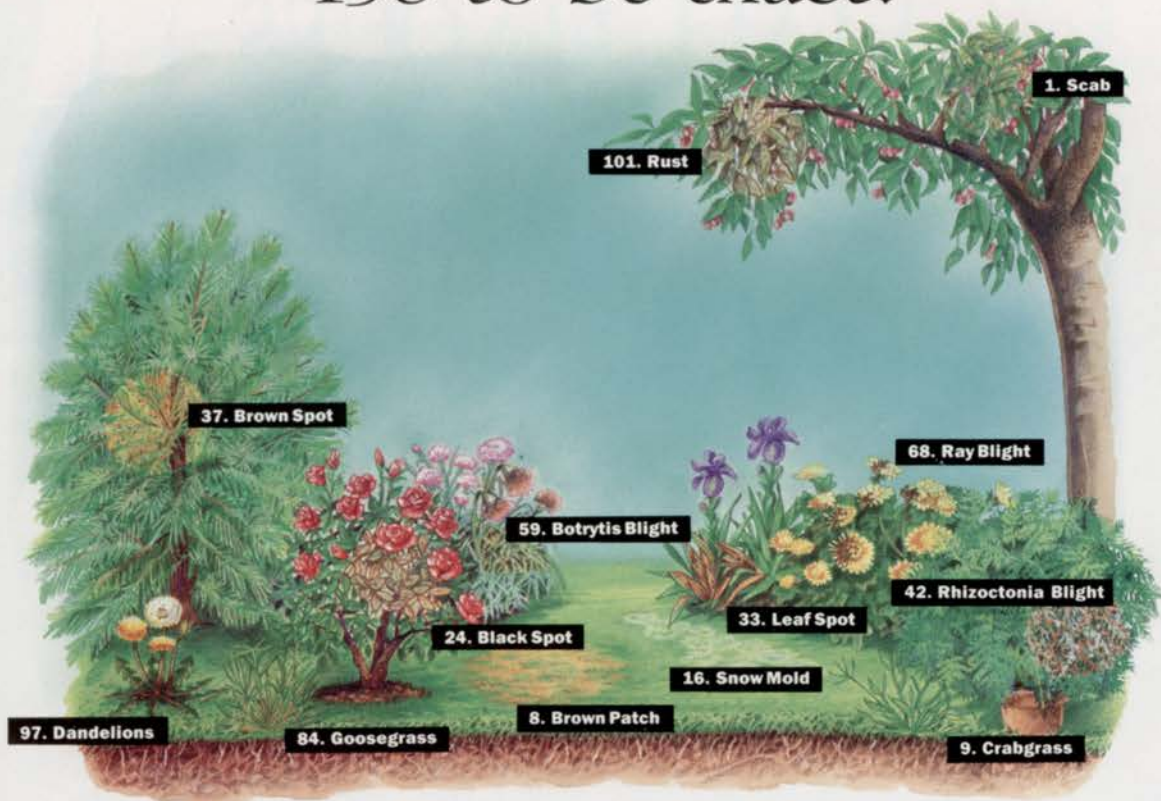
PHONE NUMBER \_\_\_\_\_

**Mail ad copy to:** Paul Garris, **Landscape Management**, 7500 Old Oak Blvd., Cleveland, OH 44130 or call 216-891-2698.

**RATES:** \$1.25 per word (minimum charge \$40). Boldface words or words in all capital letters charged at \$1.50 per word. Boxed or display ads \$105 per column inch, one time; \$100, three times; \$95, six times; \$90, nine times; \$85, twelve times (one inch minimum). (Frequencies based on a calendar year). For ads using blind box number, add \$20 to total cost of ad per issue.



# Use the Turf Care® Pros for any number of growing problems. 138 to be exact.



Professionals count on the Turf Care Pros. To treat diseases, Daconil 2787® fungicide is the cornerstone of your management program. The broadest-spectrum fungicide on the market, it controls 18 disease-causing organisms on turf and 55 major ornamental diseases. And there's never been a documented case of disease resistance to Daconil 2787.

For pre- and post-emergent herbicide control of annual grasses and broadleaf weeds, it's Dacthal® and Daconate® 6. On pesky broadleaf weeds, use 2 Plus 2.

And round out your program using Frigate® with Roundup® to control perennial and annual weeds. Together with Daconil 2787, they all create a complete professional management program.

When it comes to turf and ornamental care, count on the Turf Care Pros. And count out labeled diseases and weeds — 138 to be exact.



**ISK Biotech Corporation, Turf & Specialty Products Division, 5966 Heisley Road, P.O. Box 8000, Mentor, OH 44061-8000.**

\*Roundup is a registered trademark of Monsanto Company.

Always follow label directions carefully when using turf chemicals.

® Registered trademark of ISK Biotech Corporation.