

Fireworks and fanfare are signaling in the new generation of world class fine fescues.



Enjoy, Cindy and Longfellow are the dynamite trio of low maintenance fine fescues that provide environmentally sound answers to some of the tough turf problems in parks, home lawns, industrial complexes, roadsides and reclamation areas.



ENJOY

CHEWINGS-TYPE RED FESCUE

Enjoy Chewings Fescue is a dark green, very fine leaved variety with excellent resistance to red thread, fusarium blight and leaf spot. It is an impressive performer, developing a dense sod that stands up to hard use and will require less fertilizer and fewer mowings.



Cindy

creeping red fescue

Cindy Creeping Red Fescue, like its low maintenance companions, forms a dense upright growth of rich color that shows a marked persistency even under low fertilization regimes. One of the finest creepers available today, Cindy has the turf quality of a chewings fescue and is equally at home in sun or shade.

Longfellow

CHEWINGS
TYPE
RED
FESCUE

Longfellow Chewings Fescue is a tough competitor that consistently ranks among the top varieties in National Fine Fescue trials. Its vibrant, dark green turf has low thatch buildup and excellent tolerance to environmental stresses.

“Seed – the Gift of Life”[®]

INTERNATIONAL SEEDS, INC.

P.O. Box 168 • Halsey, Oregon 97348 • Tel.: (503) 369-2251 • Toll Free: 1-800-445-2251 • TWX: 910/240-5575 • FAX: (503) 369-2640

Circle No. 117 on Reader Inquiry Card

PRODUCT REVIEW

EPA approves fungicide in water-soluble packet

The Environmental Protection Agency has approved a new formulation for turf of Ciba-Geigy's Subdue fungicide.

Subdue + WSP combines Subdue's disease control in a water-soluble package.

"We listened to turf managers' concerns, and we think Subdue + WSP's package helps the industry address those concerns head-on, says Owen Towne, Ciba-Geigy product manager.

The product controls Pythium blight and Pythium damping-off in all turf species, yellow tuft in bluegrass, and downy mildew in St. Augustinegrass.

"Our original Subdue has been an effective turf fungicide for several years," says Towne. "The new formulation offers an alternative that features less potential applicator exposure and easier container disposal."

Subdue + WSP is packaged in a 20-ounce water-soluble bag, which comes in a standard cardboard box. To mix, drop the bag into a water-filled spray tank and agitate. The bag and fungicide dissolve quickly and completely.

Circle No. 192 on Reader Inquiry Card

Spray head features built-in nozzle with adjustable arcs

Hunter's S-type spray sprinkler with built-in nozzle is designed for use on small



turf and landscape areas. It is available with adjustable arcs to vary the radius and discharge rates, and as a fixed, full circle sprinkler. The adjustable arc feature allows the user to more precisely match irrigation coverage to garden design.

S-Type models include 2" or 4" pop-ups, a shrub head and a side strip sprinkler. Depending on the model employed, the S-Type radius may be varied from 3' to 19' and the discharge may be adjusted from 1/2 to 5.3 gpm.

The discharge rate increases automatically as the arc of the coverage is increased. The radius may be adjusted independently of the arc while maintaining matched precipitation between all models.

Circle No. 193 on Reader Inquiry Card

New modular design for hazardous waste storage

Landscape contractors, lawn care operators and golf course superintendents often find they have too-little storage space for control products or other liquids.

A series of modular hazardous materials storage buildings designed to permit more storage in less space has been developed by Shields Mfg., Oxnard, Calif.

"The modular system provides palletized depth, which makes for space efficiency," says Gary Van Valkenburgh, vice president.

The modular designs provide building in increments, in bays of 5 to 25 feet. Larger buildings are possible if the need is there.

The modular system has received Factory Mutual approval, and can be provided with fire-proofing and/or fire suppression systems.

An advantage of the modular system, according to Shields, is the capability to match end-user shelving requirements as needed, and still permit easy access to the interior.

Circle No. 194 on Reader Inquiry Card

Water-conserving spikes cut waterings by 50 percent

Soil Moist spikes without fertilizer are available in packages of 250 each from JRM Chemical, Cleveland, Ohio.

JRM says the spike is a safe, non-toxic polyacrylamide that will store more than 100 times its weight in tap water.

The spike releases a steady supply of water as needed by the plant.

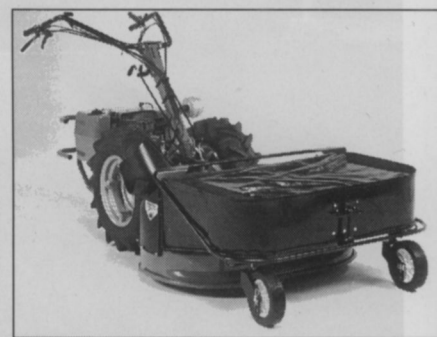
According to JRM the spike will help reduce turf waterings by as much as 50 percent.

Circle No. 195 on Reader Inquiry Card

Mower is designed for large commercial applications

The 745 commercial mower from BCS America, Inc. is designed for large-scale commercial work.

The mower runs off of a 14-hp Kohler



engine, with five forward and two reverse speeds. A 33-inch rear tine tiller is also available.

The model 745 features commercial construction throughout, from its all-gear transmission to heat-treated ball-bearing mounted shafts for long life.

A heavy-duty clutch absorbs shocks and eliminates the need for power-robbing belts. A low center of gravity provides uneven terrain.

Circle No. 196 on Reader Inquiry Card

Two-cycle oil burns entirely in combustion chamber

A new brochure from the Shaler Company describes the benefits of Rislone Premium Quality 2-cycle oil.

According to Shaler, just one oil/gas mixture meets the needs of most air-cooled, 2-cycle engines, including weed trimmers, chain saws, leaf blowers, power mowers and garden equipment.

Formulated with premium quality components, this oil burns completely in the combustion chamber.

Complete chamber burning eliminates noxious smoke and fumes, decreasing spark plug fouling and reducing deposits.

Circle No. 197 on Reader Inquiry Card

PRODUCT REVIEW

Hydrostatic walk-behind new for mower company

Gravely International has introduced its first hydrostatic walk-behind front-



mount mower, the Hydro Pro.

The new unit is powered by a 16-hp twin-cylinder Vanguard engine and features individual Sundstrand 70-series hydrostatic pumps to each wheel, individual wheel motors driving each wheel and single lever (friction washer) control for maximum forward ground speed control.

With approximate ground speeds of 0- to 5.4-mph forward and 0- to 1.5-mph reverse, the new Gravely unit mows as quickly as it will smoothly, according to Gravely. The unit can be used with all mower decks currently available for the Gravely Pro Series Heavy Duty machines, 40-, 50-, and 60-inches.

Circle No. 198 on Reader Inquiry Card

Powerful gasoline blower keeps greens dry, cool

Tempest Technology Corporation, the largest manufacturer of power blowers in the fire service industry, has announced the introduction of a new gasoline blower for use in the golf market.

Tempest says the blower is the most powerful blower on the market, and that it produces huge volumes of air that quickly dries a wet green.

The company says that the blower lets a greenskeeper control the amount of air needed for each problem green.

Because the blower is portable, it can be moved from one problem green to another, or to various areas around the green. Available in 5- and 9-hp units.

Circle No. 199 on Reader Inquiry Card

Hose reels have many spray and washdown uses

Hannay Reels makes a hose reel that is ideal for a number of pest control, landscape management and pressure washing procedures.

The Series 1500 handles 1/4"-1/2" i.d. hose and comes equipped with either a direct-crank rewind or a chain and sprocket drive powered by electric or compressed air motor. An auxiliary crank is available on the power rewind model as well.

Hannay Reels makes hose and cable reels for virtually any purpose, and the use of a reel extends the life of costly hose and cable, and keeps it safely stored and ready for use.

Circle No. 200 on Reader Inquiry Card

Backhoe attachment tackles the tough digging projects

Toyota's Skid-Steer Loader backhoe attachment is designed to tackle many



tough digging tasks, especially in tight places.

With a maximum digging depth of approximately 11 feet, the unit is suited for digging footings, foundations, general excavation, water and sewer line trenches, swimming pools and other applications where larger machines or hand labor are not practical.

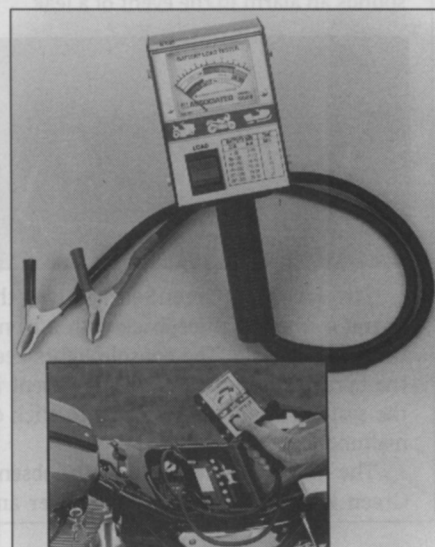
Buckets range from 10" to 36". The skid steer is designed to provide big machine performance in a compact, economical package, according to Toyota.

Easy-to-use lever controls and an adjustable boom swing speed control help keep learning time to a minimum. Hydraulic pump is standard equipment.

Circle No. 201 on Reader Inquiry Card

Battery tester available for smaller engines

An easy-to-use, hand-held battery tester for small engines is now available from



Associated Equipment Corporation.

The Model 6028 diagnoses charging and starting problems on 6- and 12-volt systems. With a single hook-up, four tests can be read on the simplified "good-bad" meter: state of charge; full load battery output; charging system voltage output; starter draw.

Circle No. 202 on Reader Inquiry Card

Turf sweeper single reel design is high efficiency

The Smithco Sweep Star turf sweeper utilizes a single reel design which operates with high pick-up efficiency and requires little maintenance.

Its full-floating, 5-foot wide reel, with pliable, serrated rubber fingers, removes leaves, clippings, pine needles and the smallest trash without damage to the turf, according to Smithco.

The sweeper is built with a hydraulic control system completely separate from its drive-train, which lets the sweeper raise and dump at any height up to six feet.

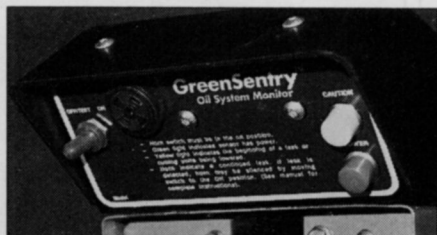
The hopper lifts easily to trucks, containers, and compost piles, even with wet and heavy loads. The sweeper is powered by a Kohler 23-hp, 4-cycle engine. A Kubota 19.5-hp diesel is optional.

Circle No. 203 on Reader Inquiry Card

PRODUCT REVIEW

Oil monitor detects hydraulic fluid leaks

Jacobsen's new GreenSentry monitors the flow of oil in the hydraulic system, and sounds an alarm in the event of a leak.



The Jacobsen GreenSentry gives the operator important feedback with a front-mounted console. The console lights keep the operator informed of oil movement in the system. There are no floats to stick or malfunction.

The monitor is available for Jacobsen's Green King IV triplex greens mower and

the LF-10 fairway mower.
Circle No. 204 on Reader Inquiry Card

Insecticides receive federal OK for mole cricket control

DowElanco's new Pageant DF insecticide has received federal EPA registration to control mole crickets in turfgrasses.

The label for the company's Dursban 50WSP insecticide has been expanded to mole cricket control in turf.

"Pageant DF and Dursban 50WSP, when used in an integrated pest management program, provide an effective way to control mole crickets, which have now become the most destructive insect pest of turf in the Southeast," says Mike Shaw, DowElanco spokesperson.

Pageant DF is a dry flowable broad-spectrum insecticide; Dursban 50WSP is a wettable powder in water soluble packets.

Circle No. 205 on Reader Inquiry Card

Pelletized minerals ready for green industry use

Kelly Lime & Rock Co., Inc. now distributes pelletized limestone, dolomite and gypsum in 50-lb. poly bags.

According to Kelly, the products are 100 percent natural. Fast-acting High Calcium Limestone is non-burning, cor-



rects soil acidity, provides plants with nutrients and helps decay lawn clippings.

Circle No. 206 on Reader Inquiry Card

POLLUTION CLEAN-UP INSURANCE FOR COMMERCIAL LAWN CARE FLEETS AND EQUIPMENT

Through the National Lawn Care Risk Purchasing Group, Inc., Lawn Care firms can now purchase pollution clean-up insurance for spills which are the result of an automobile accident.

Reasonably priced clean-up insurance is available for all sizes of trucks and production equipment providing up to \$100,000. in annual clean-up costs.

Coverage is provided by Lloyd's of London and is subject to a \$2,500. deductible per accident. This program will not replace your automobile insurance—it will fill a void in your current policy. Consult your Agent or Broker to verify that your current policy does not provide pollution clean-up protection.

For further details contact:

Richard P. Bersnak, Jeanne Bartkus, or Dan Remley at:

**M.F.P. Insurance Agency, Inc.
 50 W. Broad St., Suite 3200
 Columbus, OH 43215
 (614) 221-2398**

Circle No. 131 on Reader Inquiry Card

Quality Assured

- High quality assures your investment.
- LM's readers are the movers and shakers of the professional Landscape, Lawn Care and Golf Industries.
- The names of these highly qualified decision makers are available nationally, regionally or demographically.
- Assure your next campaign with a targeted mailing from Landscape Management's list.

LANDSCAPE MANAGEMENT
 List Rental Service

For more information call:
 Carol Nicol
 Advanstar list rental department
 7500 Old Oak Blvd
 Cleveland, Ohio 44130
 Phone (216) 826-2744
 Fax (216) 891-2727

Circle No. 147 on Reader Inquiry Card

**WITH EXHIBIT,
YOU NO LONGER
HAVE TO BE AFRAID
OF THE WATER.**

Because of a heightened sense of concern about our environment

It's in these areas you should use Exhibit.™

While harmless

the nematodes in Exhibit are driven to seek out these harmful pest larvae. They infect the pest with a deadly bacteria, feed on the remains, then reproduce.

The offspring continue to hunt down pest larvae. Once successfully eliminated, the nematodes simply

die off. So what you're left with is healthier turf. Not to mention peace of mind.

To learn more about our natural larvicide, just call your

these days, you're probably leery of using certain pest control products near water or wooded areas.

to wildlife and beneficial insects that thrive on your course, the beneficial nematodes in Exhibit are quite deadly to the cutworms, billbugs, and sod webworms that destroy it.

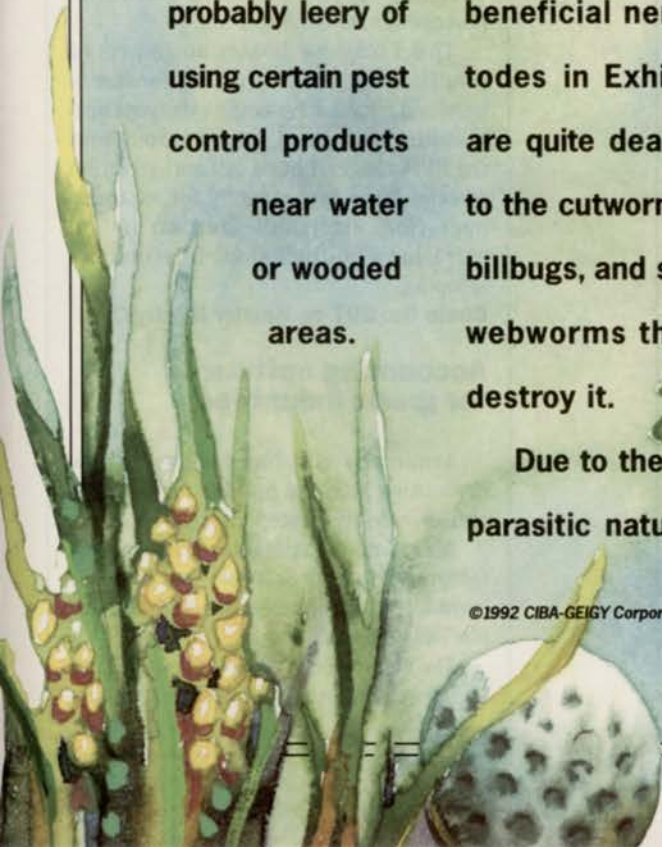
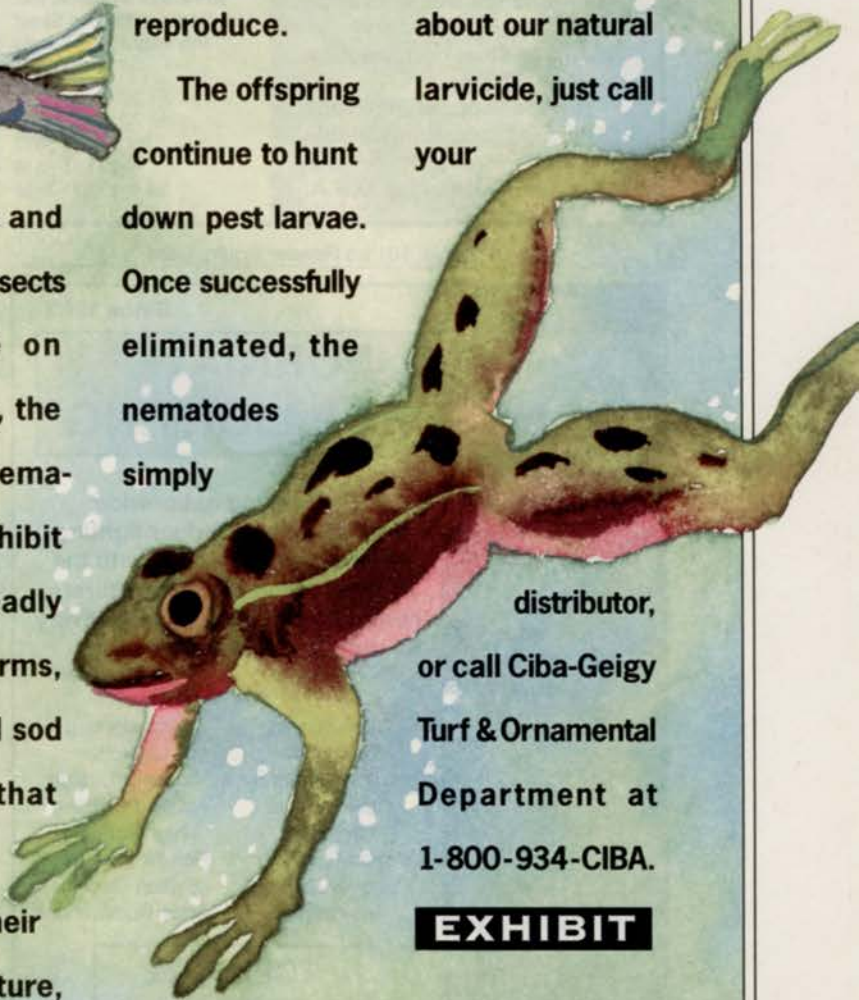
Due to their parasitic nature,

distributor, or call Ciba-Geigy Turf & Ornamental Department at 1-800-934-CIBA.

EXHIBIT

©1992 CIBA-GEIGY Corporation, Turf and Ornamental Products, Box 18300, Greensboro, NC 27419.
Always read and follow label directions.

Circle No. 109 on Reader Inquiry Card



A Breath of Fresh Air for Landscape Lakes & Ponds

The AquaTORNADO Aerator



Chemical free odor and
algae control

Improved water quality

Maintenance free operation

Stainless steel construction

Boulder appearance rock
covers available

Made in the U.S.A.



"Specialists in Aeration
and Mixing Equipment"

AEROMIX Systems, Inc.
2611 North Second Street
Minneapolis, Minnesota
55411-1634
U.S.A.

800 / 879-3677
612 / 521-8519
fax 612 / 521-1455

Circle No. 101 on Reader Inquiry Card

CALIFORNIA LANDSCAPE LIGHTING

Since 1963

The leading nationwide
distributor for outdoor lighting.
Providing contractors with the
best selection of manufacturers,
competitive prices, quick delivery
and the largest inventory.



HANOVER LANTERN



INTERMATIC



KIM LIGHTING

Distributors of

After-Sunset	Kim Lighting
Bronzelite	Lightolier
Braun & Company	Lumiere Design
Cal-Products	Malibu Lighting
Greenlee	Nightscaping
Hadco Lighting	Rainjet Fountains
Hanover Lantern	Sylvan Designs
Intermatic	Victor Illuminations

TOLL FREE

800-457-0710

Order Desk

800-457-0720

Tech Line

31119 Via Colinas • Westlake Village, Ca. 91362
Corporate Office (818) 889-6300
FAX (818) 889-6760

Circle No. 108 on Reader Inquiry Card

PRODUCT REVIEW

This trimmer is heavy-duty, high-torque workhorse

The T-27 is Shindaiwa's premier,
heavy duty workhorse. It's noted for out-



standing power, high torque and light
weight. The T-27 has electronic ignition
and a TK professional quality slide valve
carburetor for precision fuel metering in
the mid-RPM ranges where a trimmer
often runs.

Shindaiwa's T-27 features an efficient
forced air cooling system, automatic cen-
trifugal clutch and a full anti-vibration
system. The Shindaiwa line of trimmers
offers one lightweight flexible-shaft model
and four straight-shaft models weighing
from 8.6 lbs. to 12.3 lbs., with
horsepower from 0.8 to 1.5.

The T-25 now boasts an improved
throttle, moved under the shaft for ease of
handling. It's 1.4 hp engine delivers out-
standing power and torque throughout
the RPM range. It has a full anti-vibration
system, large fuel capacity for extended
operation, electronic ignition and an
extra-long 60-inch shaft to eliminate
stooping.

Circle No. 207 on Reader Inquiry Card

Accounting software for green industries

Armor Systems has designed a new
accounting software package for the agri-
culture/nursery-related market.

According to its Maitland, Fla. manu-
facturer, Premier Software can increase
productivity, reduce costs and control
business activities.

The software can track inventory, sales
and purchase orders. It also relays cus-



THE EARLY BIRD CATCHES THE SAVINGS



DURING LESCO'S SPRING EARLY ORDER RENOVATION PROGRAM.

Now is the best time to order LESCO renovation equipment. We've got special Early Order Pricing on our Renovator-20, Aerator-30 and Dethatcher. Order between May 15th and July 1st and save hundreds of dollars. **And no payment is due until October 1st with**

approved credit !

Engineered and manufactured by LESCO, the Renovator-20 features a new upper handle design and heavy-duty cables, making it more productive and operator - friendly. Our Aerator-30 and Dethatcher continue to offer turf maintenance professionals season

after season of performance and durability.

At LESCO it pays to plan ahead. So don't delay. Get a jump on the renovation market and boost your profitability by buying your equipment early. Credit terms and financing are available.

RENOVATOR-20

EOP Price: \$2,690 Save \$260

AERATOR-30

EOP Price: \$1,040 Save \$100

DETHATCHER

EOP Price: \$635 Save \$60

For more information or to place an order, contact your LESCO sales representative, visit a LESCO Service Center or call (800) 321-5325 or (216) 333-9250 in Cleveland.

LESCO

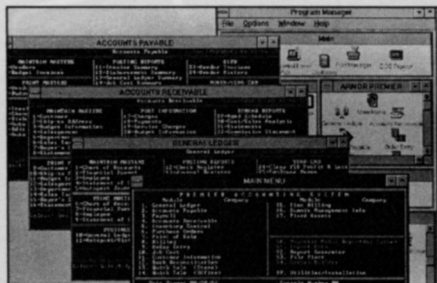
ESTABLISHED 1962

20005 Lake Road
Rocky River, Ohio 44116

Fertilizers, Seed, Control
Products, Equipment, Parts

LESCO - YOUR FIRST CHOICE IN TURF MAINTENANCE EQUIPMENT.

PRODUCT REVIEW



tomter information, and a Purchase Order program tracks demand. The Point of Sale program allows customers to pay with cash, check or five different credit cards.

Other modules are order entry, billing, general ledger, accounts payable and accounts receivable.

Circle No. 208 on Reader Inquiry Card

Treatment system cuts nitrates by 80 percent

An 80 percent reduction in contaminating nitrates was achieved at a Pennsylvania school system, after installing an alternative wastewater treatment system manufactured by Cromaglass Corp. of Williamsport, Pa.

Three studies, one conducted by Dr. Melvin C. Zimmerman of Lycoming College at a 250-student school that generates 1400-2200 gallons of wastewater per day, proved the Cromaglass system's efficiency.

The treatment system is also in use at the Jack Nicklaus-designed Grand Cayman Island golf course, and various island banks, condominiums and office buildings.

According to Cromaglass, the collated

data has demonstrated the batch treat unit capable of excellent total nitrogen removal superior to that required under new federal and state agency regulations.

Circle No. 209 on Reader Inquiry Card

New hydrostatic ZTR cuts a 42-inch path, maneuvers

Dixon Industries now offers the green industry a 42-inch hydrostatic ZTR mower.

The new ZXTR 542 features Hydro Gear drive, and, according to Dixon, outmaneuvers any heavy duty mower on the market.

The mowers move in tight circles around trees or light poles, cut neat, square corners without leaving uncut patches, turn in place without interrupt-



ing the pace. On lawns with numerous trees, benches and other obstacles, those saved minutes become hours.

It is powered by a Kohler engine.

Circle No. 210 on Reader Inquiry Card

New mulching blade has eight cutting edges

The new 2x2 Split Level mulching blade from Snapper features four horizontal and two vertical cutting edges that keep chopping clippings until they are reduced to a fine, powderlike mulch.

The new technology is available on the company's 1992 series of Recycling Mulcher Walk Mowers, with engines 4 hp and larger. Snapper also offers its standard recycling mulcher kits for all other Snapper mowing products, and says the Split Level blade will soon be added to expanded to include most Snapper product lines.

Circle No. 211 on Reader Inquiry Card

BAKER™ QUALITY. PRO PERFORMANCE.



20 & 23 HP



Tractor PTO Drive

AT LAST. A YARD WASTE RECYCLING SYSTEM THAT WORKS LIKE YOU DO. HARD AND SMART. COMPLETE DEBRIS CLEAN-UP. CHIP LIMBS UP TO 6" THICK. SHRED 1" TREE TRIMMINGS. AND TURN GIANT LEAF PILES INTO MULCH IN MINUTES WITH THE UNIQUE VACUUM KIT.

CALL TODAY AND ASK ABOUT OUR IN-HOME VIDEO DEMONSTRATION.

VIDEO DEMO \$6.95

1-800-945-0235 M-F, 8AM-5PM, CST

RECYCLE NATURE'S WASTE...NATURALLY!!!
TORNADO Products, Inc.
W190 N11260 Carnegie Drive
Germantown, Wisconsin 53022

Circle No. 144 on Reader Inquiry Card

IN THE GREEN

COMMERCIAL INSURANCE
for
LAWN CARE OPERATORS

M.F.P. Insurance Agency, Inc.
50 West Broad Street, Suite 3200
Columbus, OH 43215
(614) 221-2398

Contact:
Richard P. Bersnak, President
or
Jeanne Bartkus

Circle No. 188 on Reader Inquiry Card

PROXOL®

**When Surface
Pests are at
their worst
PROXOL®
works
best.**



Surface-feeding sod webworms, armyworms and cutworms don't stand a chance when PROXOL® 80SP is on the job. It's as easy to apply as a spray and has no unpleasant odor. Fast-working PROXOL readily penetrates thatch to control grubs. Yet it has no long-term residual build-up in the soil.

For a complete information kit on nourishing and protecting your turf, including a comprehensive guide on turf insect control, join the NOR-AM Turf Management Program. Write to the Communications Department NOR-AM Chemical Company.

 **NOR-AM**
NOR-AM CHEMICAL COMPANY
A Schering Berlin Company

Copyright © 1989 NOR-AM Chemical Company.
All rights reserved.

3509 Silverside Road, P.O. Box 7495, Wilmington, DE 19803

IMPORTANT: Please remember always to read and follow carefully all label directions when applying any chemical.

Circle No. 133 on Reader Inquiry Card

RATES: \$1.25 per word (minimum charge, \$40). Bold face words or words in all capital letters charged at \$1.50 per word. Boxed or display ads: \$105 per column inch-1x (one inch minimum); \$100-3x; \$95-6x; \$90-9x; \$85-12x. (Frequencies based on a calendar year). Agency commissions will be given only when camera-ready art is provided by agency. For ads using blind box number, add \$20 to total cost of ad per issue. Send ad copy with payment to Susan Ramseth, LANDSCAPE MANAGEMENT, 7500 Old Oak Blvd., Cleveland, OH 44130 or call 216-891-2742. Fax Number 216-826-2865.

BOX NUMBER REPLIES: Mail box number replies to: LANDSCAPE MANAGEMENT, Classified Ad Department, 120 W. 2nd St., Duluth, MN 55802. Please include box in address.

BUSINESS OPPORTUNITIES

DISTRIBUTOR FRANCHISE: Consider becoming part of a growing and profitable lawn mower, small engine replacement parts franchise. **AMPS** has several area openings to start you on your way to "financial success." For investment \$45K. **CALL (305)474-4942, ATLANTIC MOWER PARTS & SUPPLIES, INC.,** 13421 S.W. 14th Place, Ft. Lauderdale, FL 33325. 5/92

FOR SALE: Small landscape maintenance/construction service in Santa Rosa, California. Established 15 years. Commercial maintenance and residential/commercial installation. For more information write to P.O. Box 5085, Santa Rosa, CA 95402. TF

LET THE GOVERNMENT FINANCE your new or existing small business. Grants/loans to \$500,000. Free recorded message: (707)448-0330. (OL8) 7/92

NOW... LEARN PROFESSIONAL LANDSCAPING AND GARDENING AT HOME! Accredited program provides thorough training in all phases of commercial and residential landscaping. Diploma awarded. Free booklet describes program and opportunities in detail. Lifetime Career Schools, Dept. A-578, 101 Harrison St., Archbald, PA 18403. 9/92

EXCITING OPPORTUNITY/"SLEEPING GIANT!" Organic lawn care company with dynamic track record seeking to expand nationally. Looking for investors - partners - lenders or sale. **HIGH** rate of return and/or shared equity option. For further information call **(716)442-2151**, in Rochester, NY. 5/92

	LANDSCAPE DESIGN KIT 3	SAVES YOU TIME
	48 rubber stamp symbols: trees, shrubs, rocks, step stones, vine, & more. 1/4-1 3/4 in. dia	
	\$74.95 - \$4.50 sh CA orders add 7 3/4% tax.	
	AMERICAN STAMP CO. 12290 Rising Rd., Dept. 1192 VISA Wilton, CA 95693 ALL STAMPS NOT SHOWN MasterCard Phone (916) 687-7102	

ARE CHEMICALS KILLING THE CHEMISTRY BETWEEN YOU AND YOUR CUSTOMERS? If you're not growing, you might want to consider converting to or adding a NaturaLawn Franchise. We are the industry leader in organic-based lawn care. We offer reduced franchise fees to existing businesses with a minimum of \$50,000 in existing annual lawn care revenue. **NaturaLawn of America, Mike Catron, 1-800-989-5444 (C).** 7/92

FOR SALE

FOR SALE: Jacobsen E10 5 gang Blitzer \$4,750. Jacobsen 3 gang Blitzer \$1,500. Toro Park Master 7 gang mower \$7,250. (OBO). (501)776-3802, Jim. 5/92

PIPE LOCATOR INEXPENSIVE! Locates, traces underground drain, water pipe lines of clay, PVC, ABS, steel, cement. Finds sprinklers, valves, clogs. Bloch Company, Box 18058, Cleveland, Ohio 44118. (216)371-0979. TF

Royer Shredder 182. Very low hours, outstanding machine for processing and shredding soil, peat humus, compost, etc. For bid purchase information contact: Southgate Parks & Recreation, 14400 Dix-Toledo Rd., Southgate, MI 48195. (313)246-1339. 5/92

NEW AND USED BROUWER EQUIPMENT: Mowers - VACS - Fork Lifts - Harvesters - and full line of replacement parts. Contact Ed or Glenn Markham at 1-800-458-3644. TF

For Sale: Used Brouwer Sod Harvesters and Hitch-Hiker Forklifts. Many lines of equipment for sod growers as well as full line of Ford, Brouwer, and Kubota parts in stock. Huber Ranch Sod Nursery, Inc., Schneider, IN. Ph: 800-553-0552. 5/92

Howard Gem 20" reconditioned \$3,500 plus engine choice also 24" and 30" Gems. Reconditioned BCS 745 14 h.p. Kohler or Ferrari 14 h.p. diesel electric start \$2,000. Disc Trainers-Root Cutters, Stump Cutters, Chain saws, Power feed Chippers 18 h.p. to 120 h.p. Commercial Tillers/Engines-parts & service, Dowdeswell (Howard Gem), BCS, Howard, Maschio, Mainline, Wisconsin, Kohler, Acme. **For the Quality Service you expect. G & S TILLER SALES, 2031 Fourth Avenue, Joliet, IL 60433. (815)726-7921.** 7/92

	TREE TRANSPLANTER Lightweight, Variable Size Rootball (16" - 28"), Component Adaptable (sprayer, logsplitter, dump box, post-hole digger). Available in 3 models (towable, bucket mount, 3 pt.). MID DAKOTA CORP. Box 728 • Garrison, ND 58540 Phone (701) 337-5619 or 1-800-327-7154 GSA Contract No. GS-00F-5442A SIN No. B37

PENNSYLVANIA GROWN SOD: PENNCROSS - Bentgrass available soil free. BLUEGRASS BLEND. BLUEGRASS/RYEGRASS Blend-Shipped via our trucks - forklift unloaded. **VICOR FARMS, INC.,** Connoquenessing, PA 16027. **800-842-0461** 10/92

PACHYSANDRA TERMINALIS: Strong 1 yr. propagated in soil and peat frames with light shade. **First class Stock. 100-\$16. 1000-\$135. F.O.B. here.** Field grown Myrtle, Baltic Ivy and Eucalyptus available in quantity. A good source of supply since 1937. **Send for wholesale list on your letterhead. PEEKSKILL NURSERIES, Box 428L, Shrub Oak, NY 10588. (914)245-5595.** 5/92

LANDSCAPE MAINTENANCE BUSINESS FOR SALE - 100 plus solid accts dating back to 1984. Potential unlimited. In fast growing tri-state river area of Bullhead City, AZ. \$110K. (602)754-3277 evenings. 5/92

HYDRO-MULCHERS AND STRAW BLOWERS: New and used. **JAMES LINCOLN CORPORATION,** 3220 S. Jupiter Rd., Garland, TX 75041. (214)840-2440, (800)527-2304. TF

REINCO HYDROGRASSERS and power mulchers in stock. Opdyke Inc., (Philadelphia Area) 215-721-4444. TF

LAWN SEED: Wholesale. Full line of top quality grasses. Improved bluegrass varieties, tall fescues and fine bladed ryegrasses. We specialize in custom mixing. **Oliger Seed Company, 89 Hanna Parkway, Akron, OH 44319.** Call collect (216)724-1266. TF

SPYDERS - New/Used/Rebuilt. New Kohler engines, short blocks and a complete line of engines and Spyder replacement parts. New Style Nichols-Fairfield Torque Hub Kits, heavy duty Wilton Caster Kits, Remote Air Cleaner Kits, heavy duty Carriage Side Plates. We repair and rebuild hydraulic pumps and motors for your Spyder. Same day service. Call or Write: **Mobile Lift Parts, Inc., 5402 Edgewood Rd., Crystal Lake, IL 60012.** 815-455-7363; 1-800-397-7509. 5/92

SPRAY TRUCKS: 1987 and 1989 GMC Diesel 4,000 - 700 Gal stainless steel tanks, Hannay Reels w/300' of hose. Excellent condition in and out. 30,000 miles. PTO. \$14,000 & \$16,000 neg. 651 Pine Street, Uniondale, L.I., New York 11553, (516)489-3903. 5/92

KELWAY professional SOIL ACIDITY and SOLUBLE SALTS TESTERS available from distributors nationwide. HB-2 and SST brochures from **KEL INSTRUMENTS CO., INC.,** Dept. 1, P.O. Box 54, Wyckoff, NJ 07481. (201)847-8353. 10/92

FOR SALE: Jacobsen HF-5 7,400, Toro GM-3 green mower 3,000, Jacobsen 5 gang fairway, 5 gang Blitzer, 7 gang Blitzer and hydraulic 5 gang. Ransomes 213-D 6,500. All equipment reconditioned and ready for Spring. 313-653-5695. 6/92

Finn Hydroseeders, Mulch Spreaders, Krimpers, Pit Burners, Fiber Mulch & Tackifiers. New & Used. **Wolbert & Master, Inc.,** P.O. Box 292, White Marsh, MD 21162. 301-335-9300, 1-800-234-7645. TF

HELP WANTED

LANDSCAPE MAINTENANCE SUPERVISOR: For multi-million dollar Florida landscape company. To handle field supervision for up to 5 crews. Knowledge of southern horticulture preferred. Salary + benefits. Send resume to: **Mr. S. Khalsa, 1174 Florida Central Parkway, Longwood, FL 32750.** 5/92