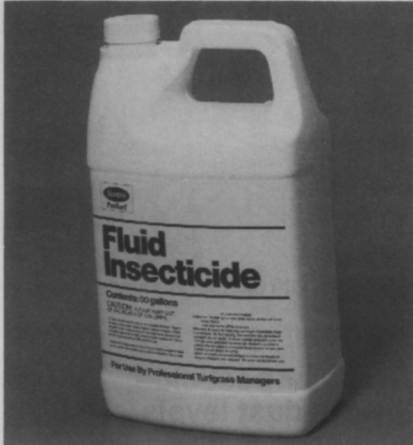


PRODUCTS

Fluid insecticide controls more than 100 insects

The O.M. Scott & Sons Fluid Insecticide is formulated to offer one of the widest spectrums provided by one product, as it controls more than 100 turf, tree and ornamental-damaging insects, including consistent control of the white grub complex.

Scotts says the water-based formulation is easy to handle and mix, and fits easily into an "integrated pest management" spray program.



Circle No. 191 on Reader Inquiry Card

Gain spectrum control with tree, shrub insecticide

Pageant DF from DowElanco is specially formulated for tree and shrub care.

Pageant protects trees and shrubs from virtually all troublesome worms, beetles, borers, scales and aphids. When the spray dries, it bonds tightly to trees and shrubs, and doesn't wash away, even in heavy rain. Comes in a convenient dry flowable formulation.



Circle No. 192 on Reader Inquiry Card

Control aphids, mites and other ornamental pests

Metasystox-R2 from Mobay Corporation is an ornamental insecticide ef-

fective for pests that attack shade, nursery trees and shrubs.

Absorbed into the root system, Metasystox-R2 travels in the sap stream to protect the plant from sucking insects and mites.

Mobay says weather will not reduce the effectiveness of the product. The chemical is inside the plant where it cannot wash off or blow away. And, it will not destroy beneficial insects populations.

Metasystox-R2 mixes with water to form an emulsion that is usable in soil injection equipment.

Circle No. 193 on Reader Inquiry Card

Soil modifiers can help turfgrass plants

Power Up Bio-Modifiers can work in harmony with nature in maintaining a balance of essential nutrients and micro-organisms in the soil for optimum plant/soil health and growth.

These Bio-Modifiers actually stimulate biological activity in the plant/soil ecosystem, according to the people at Power Up. According to a press release, "By using these products, the percentage of seed germinated increases and time of germination increases.

"Over a period of time and con-



trolled use, Power Up will enable your soil to release its hidden potential. Through a series of small advances in the soil composition, large life-changing modifications will occur."

Circle No. 194 on Reader Inquiry Card

Disposable earplugs, goggles hit market

From Zee Medical, Inc. comes a disposable polyurethane foam earplug as well as a line of goggles in five styles.

The NRR III earplug has a noise reduction rating of 31 dB, is tapered and extra long and the company says is easy to insert and remove in any ear canal.

Vision Shield goggles are lightweight and made of PVC frames which Zee says are impact-resistant and comfortable.

The goggles are manufactured in

two pieces with replaceable lenses and soft nose pieces. The line features perforated safety goggles, indirect vents and respirator fit to oversize goggles.

Circle No. 195 on Reader Inquiry Card

Pesticide collection center holds 135 gal.

From Justrite Manufacturing Co. comes a secondary containment storage system which encases two standard 55-gallon drums.

The system, made of molded medium density polyethylene, is 60 inches long by 34 inches wide. It



stands 47 inches and weighs 105 pounds.

The container is equipped with a grating suspended over a 135-gallon capacity sump.

The top cover slides for easy access and lugs on the base allow for lifting with truck forks. The unit is designed to fend off rain water and is equipped with a lock.

Circle No. 196 on Reader Inquiry Card

Spray-on soil stabilizer aids in erosion control

A spray-on soil stabilizer is now available from Environmental Soil Systems, Inc.

Soil Master WR blends liquid copolymers to form a membrane capable of bonding topsoil and protecting



against erosion.

Soil Master WR treatments can also help establish vegetation.

A thicker blend is used in soil erosion problems while thinner blends act as tackifiers in hydro-

seeding and mulching.

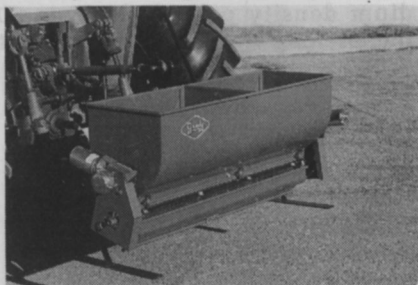
It is available in 55-gallon drums.

Environmental Soil Systems says Soil Master WR is safe for the environment, as well as non-toxic and non-flammable. It can be used for planned residential communities and other commercial landscapes including parks and golf courses.

Circle No. 197 on Reader Inquiry Card

New spreader versatile; easy on maintenance

From Gandy Co. comes a new 42-inch drop spreader which can be used in a variety of settings.



The Turf Tender spreader—on a three-point hitch mount—can accurately spread sand, salt or sodium chloride on ice, topdressing or gran-

ular pesticides with equal ease.

The hopper holds 3.5 cu. ft. of material. Internal rotors are powered by 12-volt electric motors and all controls can be led to the tractor seat area.

The bottom is made of stainless steel and snaps off for cleaning.

Circle No. 198 on Reader Inquiry Card

Equipment catalog full of newest gear

Witco Industries has released its 1991 landscape management equipment catalog. The 94-page guide features commercial equipment in heavy use settings including trench diggers, power sprayers and other big ticket items used at golf courses, cemeteries, schools and other landscape settings.

Witco says prices are competitive and all equipment comes with limited warranties.

Circle No. 199 on Reader Inquiry Card.

Landscaping tool line offers job flexibility

From V & B Manufacturing Co. comes a new line of landscaping tools the firm

has dubbed "high tech designed" because of patents of the unique shapes and acclaim from industry experts.

The Groundbreaker series was engineered with nursery, landscaping and gardening in mind as well as construction work involving trenching.

The head designs are different than traditional past shapes, are made of a lighter ductile iron and come in a mix of handle lengths for various situations.

The company says the nine tools will perform 18 different job functions.



Circle No. 200 on Reader Inquiry Card

Granular pesticide lowers dust levels

From Rhone-Poulenc comes a granular formulation of Chipco Mocap 10G pesticide. The new form has reduced dust levels during application, the company says.

The pesticide can be applied between 50 and 200 pounds per acre, depending on the pest and has been used to control surface and subsurface insects such as white grub, mole cricket, chinchbug, black turfgrass atenius beetle, bluegrass billbug, sod webworm and nematodes.

After application, Chipco Mocap 10G needs watering or soil incorporation.



Circle No. 201 on Reader Service Card
continued on page 59

YOUR TREES DESERVE THE BEST OF CARE

Trees are valuable assets. Don't entrust their future to less than caring professionals.

Bartlett leads the way in tree care with trained arborists, research facilities, nationwide experience and specialized equipment.

For a professional evaluation of your tree care needs or for our free brochure, call today. There is no obligation.

1-800-THE EXPT
(1-800-843-3978)

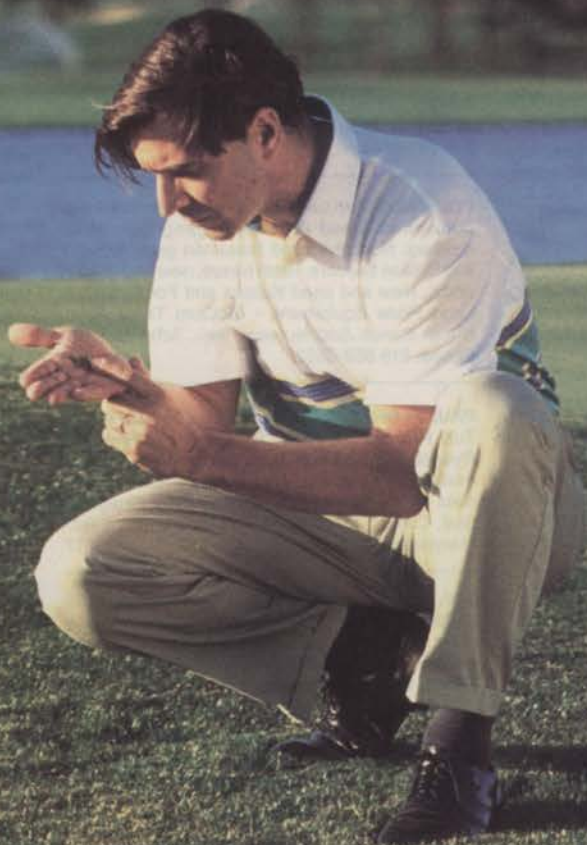


Scientific tree care since 1907
BARTLETT
TREE EXPERTS
STAMFORD, CT

©1990 Bartlett Tree Experts

Circle No. 102 on Reader Inquiry Card

For the turf manager who worries about every spot, patch and mold.



Now there's Curalan™ fungicide.

Now broad spectrum CURALAN controls eight diseases without harm to turf so turf managers can sleep nights.

Brown patch and dollar spot control. CURALAN controls these tough diseases plus six more including leaf spot, Fusarium patch and grey snow mold.

Two-way protection. CURALAN gives you the option of preventive and curative treatments by adjusting the application rate.



Labeled for all turf grasses.

You can apply CURALAN to any turf grass variety, at any stage of growth without concern for injury.

CURALAN is part of a growing line of turf ornamental products from BASF.

Simple solutions to complex problems.

For more information call
1-800-878-8060.

BASF Corporation

BASF

Always read and follow label directions.
Curalan is a trademark of BASF Corporation.
© 1991 BASF Corporation JJ7623

Circle No. 101 on Reader Inquiry Card

CLASSIFIEDS

RATES: \$1.25 per word (minimum charge, \$40). Bold face words or words in all capital letters charged at \$1.50 per word. Boxed or display ads: \$105 per column inch-1x (one inch minimum); \$100-3x; \$95-6x; \$90-9x; \$85-12x. (Frequencies based on a calendar year). Agency commissions will be given only when camera-ready art is provided by agency. For ads using blind box number, add \$20 to total cost of ad per issue. Send ad copy with payment to Dawn Nilsen, LANDSCAPE MANAGEMENT, 1 East First Street, Duluth, MN 55802 or call 218-723-9483. Fax Number 218-723-9437.

BOX NUMBER REPLIES: Mail box number replies to: LANDSCAPE MANAGEMENT, Classified Ad Department, 1 East First St., Duluth, MN 55802. Please include box number in address.

BUSINESS OPPORTUNITIES

CURBIMATE. The growth industry of the 90's is concrete landscape edging installed by the Curbmate machine. Excellent profits, low overhead, low start-up. \$5,495. Call (801)262-7509. 6/91

LET THE GOVERNMENT FINANCE your new or existing small business. Grants/loans to \$500,000. Free recorded message: (707)448-0330. (OL8) 5/91

For Sale or lease - 17,000 sq. ft. greenhouse, fully automated with hot water heat. Automatic watering system and vent control. P.O. Box 27, McGaheysville, Virginia 22840. 703-289-9661. 6/91

LEARN Professional Landscaping and Gardening at home. Accredited program provides thorough training in all phases of commercial and residential landscaping. Certificate awarded. Free booklet describes program and opportunities in detail. Lifetime Career Schools, Dept. A-480, 101 Harrison St., Archbald, PA 18403. 9/91

WANT TO BUY OR SELL A GOLF COURSE? Exclusively golf course transactions and appraisals. Ask for our catalog. McKay Golf and Country Club Properties, 15485 N. East Street, Lansing, Michigan 48906. Phone (517)484-7726. TF

WANTED - MANUFACTURERS REPRESENTATIVES AND DISTRIBUTORS - to represent a line of high quality hydroseeding tackifiers. For more information, contact PRSM, Inc. at (215)430-3960. 5/91

CURB KING: Curbing machine that lays continuous concrete landscape borders. Financing available. Low investment, high returns. For information call 303-434-5337 or write P.O. Box 40567, Grand Junction, CO 81504. TF

EDUCATIONAL OPPORTUNITIES

GRAYSON COLLEGE, Denison, Texas. Two-year technical program in Golf Course and Turfgrass Management. 18-hole golf course on campus. Dormitories, placement assistance, financial aid and scholarships available. Contact: GCC, 6101 Grayson Drive, Denison, TX 75020. 214-465-6030, Extension 253. 6/91

FOR SALE

I.P.M. sprayer 2x200 gallon poly tank, D30 hypro pump, 5 HP B&S engine, electric reel, 300 ft. hose, J.D. 2 GPM shower head. 12 months new, used 4 times. \$2,100 or B.O. 617-846-2848. 5/91

HYDRO-MULCHERS AND STRAW BLOWERS: New and used. **JAMES LINCOLN CORPORATION,** 3220 S. Jupiter Rd., Garland, TX 75041, (214)840-2440, (800)527-2304. TF

KELWAY® professional **SOIL ACIDITY** and **SOLUBLE SALTS TESTERS,** available from distributors nationwide. **HB-2** and **SST** brochures from **KEL INSTRUMENTS CO., INC.,** Dept. 1, P.O. Box 2174, Vineyard Haven, MA 02568. (508)693-7798. 10/91

BENT GRASS available for immediate pick-up or delivery. For information call **Jade Run Turf and Sod Farm: 800-332-1220.** 12/91

PROPERTY MAINTENANCE COMPANY - DENVER, COLORADO: Over eight years strong growth. Sales \$733,000. Extremely profitable. \$75,000 down. Seller will finance. Omni Business Brokers (303)753-1233. 6/91

REINCO HYDROGRASSERS and power mulchers in stock. **Opdyke Inc. (Philadelphia Area)** 215-721-4444. TF

FOR SALE: Two used **Brouwer Harvesters** - reconditioned. Used **Brouwer 7 gang** manual lift mowers. New and used **Roseman gang** mowers and **Brillion seeders.** Hitch hikers, new and used in stock. New and used **Kubota** and **Ford tractors.** Land Pride Equipment. - **McCord Terra Tires.** Huber Ranch Sod Nursery, Inc., **Schneider, IN.** Phone: 219-552-0552. 6/91

PAUL FLORENCE Turfgrass: Quality seed for the Turf Professional, Elite Bluegrasses, Fine-Leaf Ryegrasses, and Turf-Type Tall Fescues. Custom mixing our specialty. **Silva-Fiber** mulch and supplies for hydro-seeders. Quality Elite Bluegrass Sod. Call us! (513)642-7487. 13600 Watkins Rd., Marysville, OH 43040. TF

Sod, sprigs, row planting, strip sodding, solid sodding, fairway renovations, complete turn-key jobs. 16 yrs. golf course experience. 1-800-458-4756, DOUBLE SPRINGS GRASS FARM, Searcy, Arkansas. TF

FOR SALE - HYDROSEEDER - FINN TITAN 3000: Very good condition. John Deere diesel engine with 800 hours. Mounted on a 1978 Mack 685. \$32,000. 216-539-4450. 5/91

PENNSYLVANIA GROWN SOD: PENNCROSS Bentgrass-Fourway Blend of **BLUEGRASS-BLUEGRASS/RYEGRASS** Blend-Shipped via our trucks - forklift unloaded. **VICNOR FARMS, INC.,** Connoquenessing, PA 16027. 800-842-0461 6/91

FOR SALE: Northwestern Indiana sod business serving the Chicago and Indianapolis markets. Includes all rolling equipment, buildings, irrigation and 1 1/2 million yards of harvestable sod on 530 acres. A profitable well established business. Call or write **WILLE & STIENER REALTORS,** P.O. Box 290, Crown Point, Indiana 46307. Attention: Gil Stiener. Phone (219)663-2990. 5/91

'86 ROTOMIST BLOWER for sale: 500 psi bean pump powered by a 4 cyl. Ford gas engine. 250 gal. tank. Contact **Mike Young** at Edmonds Landscaping, Halifax, Nova Scotia, Canada, 1-902-423-8174, Fax 1-902-455-9956. 5/91

SPYDERS - New/Used/Rebuilt. New Kohler engines, short blocks and a complete line of engines and Spyder replacement parts. New Style Nichols-Fairfield Torque Hub Kits, heavy duty Wilton Caster Kits, Remote Air Cleaner Kits, heavy duty Carriage Side Plates. We repair and rebuild hydraulic pumps and motors for your Spyder. Same day service. Call or Write: **Mobile Lift Parts, Inc.,** 5402 Edgewood Rd., Crystal Lake, IL 60012. 815-455-7363; 1-800-397-7509. 5/91

One Lawn Truck - Mercedes Benz Diesel. Excellent condition - 1981. 1,200 gallon 2 compartment stainless steel tank. Also holds 1,000 lbs. of dry fertilizer. Hydro-cell 25 gallons per minute pump. 2 hose reels with guns. \$8,900. 201-891-8035. 5/91

QUALITY TURF GRASSES: Sod or sprigs. Meyer Z-52, Tifgreen II, Tifdwarf, Tifway. Sprig planting available. **Quail Valley Farm, Inc.** 1-800-666-0007. 5/91

High quality professional horticulture training videos. 100% satisfaction guaranteed! Call or write for a free color catalog. **San Luis Video Publishing, P.O. Box 4604, San Luis Obispo, CA 93403** Tel: (805)545-5426. Fax: (805)545-5423. 6/91

AKRON LANDSCAPE SUPPLY. Complete line of commercial walk behind mower parts, air filters, blades, monofilament line and accessories. Call 1-800-666-5344. 6/91

PIPE LOCATOR INEXPENSIVE! Locates, traces underground drain, water pipe lines of clay, PVC, ABS, steel, cement. Finds sprinklers, valves, clogs. **Bloch Company, Box 18058, Cleveland, Ohio 44118.** (216)371-0979. TF

Jacobsen - E10 - 7 units, rebuilt mowers. Excellent condition, \$6,100. 5 gang **Toro,** good condition. \$750. (501)664-2136 or (501)776-3802. 6/91

NEW AND USED BROUWER EQUIPMENT: Mowers - VACS - Fork Lifts - Harvesters - and full line of replacement parts. Contact **Glenn or Ed Markham** at 1-800-458-3644. TF

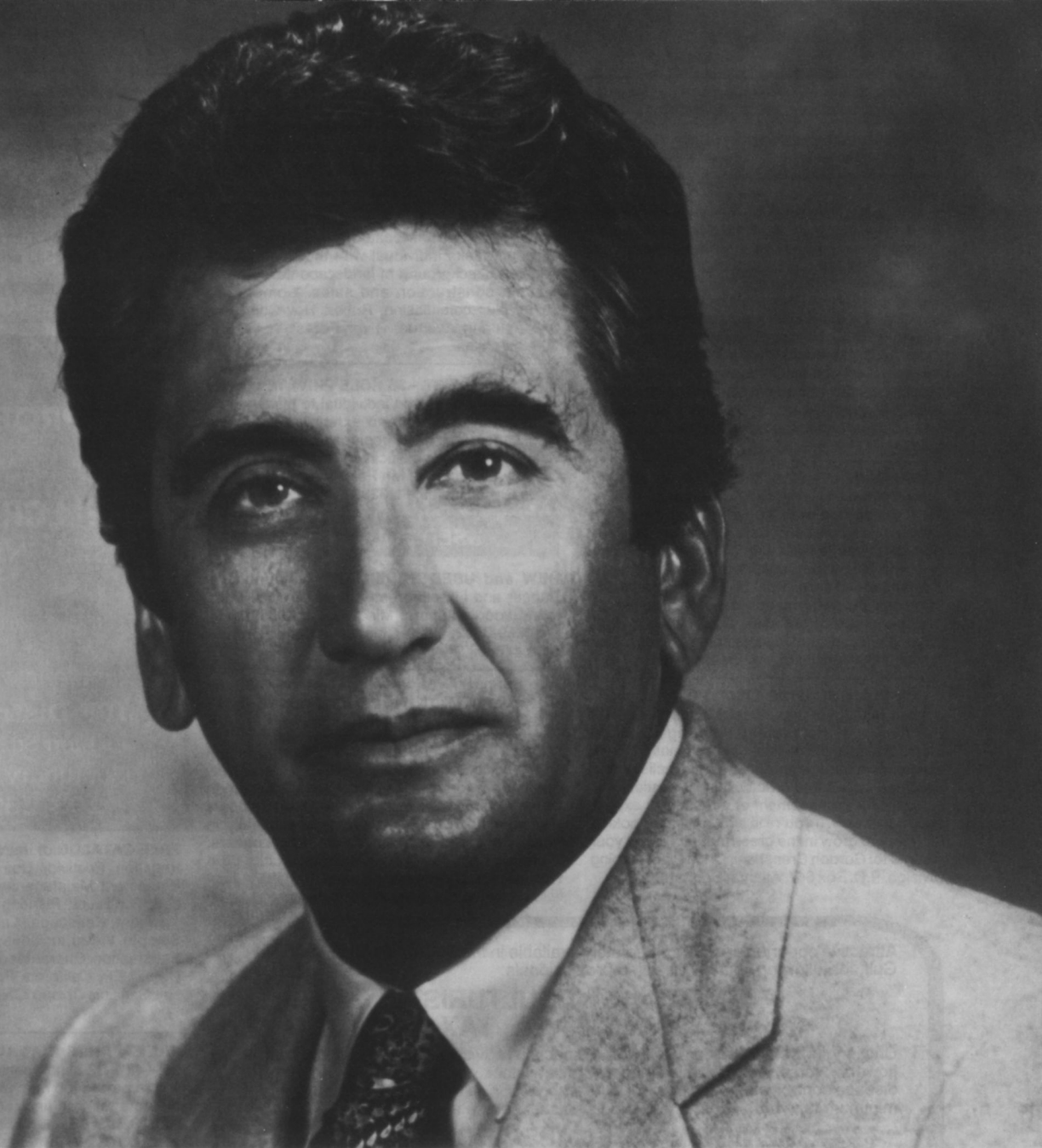
BULK HARDWOOD: Pine and Cypress mulches, woodchips, lumber, timbers, stone products and many other landscape and nursery supplies. Express delivery and UPS next day shipment. Call today. **GARICK and LANDSCAPERS WHOLESALE, INC.** 1-800-322-7700, nationwide. In Ohio, 1-800-631-1395. 6/91

Jacobsen HF5, lightweight fairway mower, diesel, sharpened, \$7,900. **Toro Greensmower,** sharpened, \$3,300. **Jacobsen Greensmower,** sharpened, \$3,300. '86 **Ransomes 213-D,** Kubota Diesel, sharpened, \$8,400. '85 **Jacobsen 5-ganged hydraulic fairway mower** with power pac, sharpened, \$5,250. Photos available. Call for information 313-653-5695. 5/91

PUMPS: Reconditioned **Wanner Hydra-Cell D-10, D-25** and **John Bean Pumps.** New and reconditioned parts and service for your pumps. **Industrial Services Company,** 2727 Rome Corners Road, Galena, Ohio 43021. Call **Jim Hughes** (614)965-4112. 6/91

LAWN SEED: Wholesale. Full line of top quality grasses. Improved bluegrass varieties, tall fescues and fine bladed ryegrasses. We specialize in custom mixing. **Oliger Seed Company,** 89 Hanna Parkway, Akron, OH 44319. Call collect (216)724-1266. TF

Finn Hydroseeders, Mulch Spreaders, Krimpers, Pit Burners, Fiber Mulch & Tackifiers. New & Used. **Wolbert & Master, Inc.,** P.O. Box 292, White Marsh, MD 21162, 301-335-9300, 1-800-234-7645. TF



“We used ROOTS* Root Growth Enhancer on a large residential project in New England that required installation of over \$100,000 worth of broadleaf evergreens (laurel and rhododendron) on a hillside. This plant material was installed in September, which is a crucial time for planting due to the nature of our winters. The hillside location also subjected the plants to cold winds that began immediately after planting was finished. The ROOTS biostimulant significantly reduced the transplant shock we would have normally encountered, and we lost very little stock. Some of the large trees we installed cost \$5,000 apiece and you don't want to lose even one of those. In the future, we plan to use ROOTS on all of our large plantings.”

roots inc.

A Division of LISA Products Corp.
25 Science Park, New Haven, CT 06511

*ROOTS is a trademark
of LISA Products Corporation

Ron Boucher, President
Ron Boucher and Associates
Sudbury, Massachusetts

Circle No. 124 on Reader Inquiry Card

Please call us toll-free at 1-800-342-6173 for additional information

Meyer Z-52 zoysia sod, bermuda-free, forklift delivery to the Mid-Atlantic region. Oakwood Sod Farm, Salisbury, MD 301-742-3086. 7/91

HELP WANTED

ASSISTANT TURFGRASS MANAGER: Progressive family owned sod farm is seeking an individual with turfgrass and/or farming background. Turf experience and degree is preferred, but not required. Responsibilities include managing all phases of Bluegrass development from seeding to mature sod. Also assist in set up and operation of a golf range. Applicant must provide leadership, like outdoor work and enjoy laxed off season. Salary commensurate with qualifications. Health benefits, retirement plan and profit-sharing available. Send resume to DeBuck's Sod Farms, 142 Mission Land Road, Pine Island, New York 10969. 5/91

LAWN CARE DIVISION MANAGER: Established Missouri based Landscaping Company looking for top individual with leadership background to manage St. Louis Lawn Care Operation. This person should be familiar with all technical, production and telephone aspects of full service lawn, tree and shrub care. Must be 100% committed to improving the performance of the job. Base salary plus performance bonuses, insurance and profit sharing. Please send resume complete with references and salary history to LM Box 486. 5/91

ORKIN PLANTSCAPING DIVISION: Needs experienced managers and sales executives to meet the needs of its fastest growing division. Plantscaping is the design, sale and maintenance of interior foliage plants located in malls, office buildings, hotels and civic buildings. Horticultural background, management or direct sales experience necessary. If you're in a rut or simply looking for a way to grow in the green industry, send your resume to: Gordon Crenshaw, Orkin Plantscaping Division, P.O. Box 647, Atlanta, Georgia 30301. 5/91

Assistant Manager needed for Sod Operation located in Louisburg, NC, 40 miles N.E. of Raleigh. Turf related employment history a plus. Degree in Agronomy or Turf related field required. Excellent salary and benefits available. Send resume to United Turf, Inc., Rt. 1 Box 170, Powells Point, NC 27966. 5/91

LANDSCAPE DESIGNER/ARCHITECT: Established landscape firm located in western suburb of Chicago seeks individual with thorough knowledge and background of landscape design, estimating, construction and sales. Competitive salary plus commission. Robert Hoy Company, 345 Ashland Avenue, River Forest, IL 60305. 708-366-7339. 5/91

HORTICULTURIST - 36 HOLE PRIVATE country club seeks a hands-on individual to manage golf course tree program and extensive clubhouse landscape plan. This position requires supervisory skills. Send qualifications to Vineyard Golf & Country Club, care of Mr. Peter Metcalf, 400 Vineyards Blvd., Naples, FL 33999. 5/91

USED EQUIPMENT

NEW and USED EQUIPMENT--Asplundh, Hi Ranger and Lift-all forestry bucket trucks, Chipmoo wood chippers. Mirk, Inc., (216)669-3567, (216)669-3562, 7629 Chippewa Road, Orrville, Ohio 44667. TF

Two Vermeer Tree Spades: *T-44 on C-30 '82 Diesel Chevy, Like New \$11,500. *T-66 on C-65 '73 Gas Chevy, \$11,000. (405)842-7177. TF

BUCKET TRUCKS, Straight Stick, Corner Mount and Knuckle Boom Cranes. Brush Chippers - New Asplundh (Morbark Disc Type), New Asplundh Drum Type. Best prices anywhere. Used Chippers - Asplundh, Woodchuck, etc. 2 to 8 usually in stock. Sprayers, Dumps, Stakes, Log Loaders, Crew Cab Chip Box Dumps, Railroad Trucks, 50 in stock. Sold as is or reconditioned. Opdyke's, Hatfield (Philadelphia Area) 215-721-4444. TF

Attractive opportunities are immediately available in the State of Bahrain, Arabian Gulf, for following suitably qualified professionals:

SENIOR HORTICULTURIST (about U.S. \$46,300 p.a., TAX-FREE)

Challenging senior position. Will provide specialist advice on arid region plants and flowers. Nursery organization and operation, stock control, care of plants and disease control, staff development. Preferably M.Sc. in related major of study and minimum ten years experience. Middle East expertise an advantage.

SENIOR LANDSCAPE ARCHITECT (about U.S. \$41,300 p.a., TAX-FREE)

- For field/operation assignment; experience with landscaping contractor essential.
- For design office staff; landscaping strategies and design for major parks, gardens and roads. Knowledge of arid regions' plants and irrigation systems. Preferably M.Sc. in related major study and minimum 8 years experience. Middle East experience and experience of design at national and regional level an advantage.

LANDSCAPE ARCHITECT (about U.S. \$35,400 p.a., TAX-FREE)

- For field/operations assignment; experience with landscaping contractor essential.
- For design office staff; landscaping design of parks, gardens and roads. Experience on major design projects and construction. Knowledge of arid regions' plants and irrigation systems and Middle East experience an advantage. Related B.Sc. and minimum six years experience.

Bahrain, connected to the Arabian mainland by a causeway, is a commercial and banking center for the Arabian Gulf area, with a large community of expatriates enjoying a high standard of living. Advanced medical services, varied sports activities, top restaurants and hotels, traditional and cultural aspects provide a rewarding lifestyle for the discriminating resident.

Two years employment contract, renewable on annual basis (family or single status). Furnished accommodation, free medical coverage in State Hospital, school fees assistance, six weeks paid annual leave, air fares paid.

Please send detailed resume immediately to: Assistant Director for Parks, Technical and Environmental Affairs, Central Municipality Council, P.O. Box 53, State of Bahrain (Arabian Gulf).

STATE OF BAHRAIN • CENTRAL MUNICIPALITY COUNCIL

BUCKET TRUCK: Hi Ranger 65', 57', 50'. Sky-workers with chip boxes. Asplundh bucket trucks with chip boxes. Asplundh brush chippers. Bean 55 gal. sprayers. Pete Mainka Enterprises, 633 Cecilia Drive, Pewaukee, WI 53072. 414-691-4306. TF

WANTED

Princeton Towboy Turf Harvester, working condition. (301)928-3620 ask for Jack. 5/91

MISCELLANEOUS

Birds or Animals a PROBLEM??

Scare them away with
SHELLCRACKERS®
a PEST CONTROL DEVICE
that safely disrupts
eating & nesting habits.

For more info, call or write:

JPF Distributors
9 Union Sq. Suite 184B
Southbury, CT 06488
203-262-1463

FREE CATALOG of training videotapes including Irrigation, Pesticide Use & Safety, Arboriculture, Equipment Maintenance, Pruning, Plant Selection, Fertilizers, Planting Techniques, Turf Management, Xeriscape, Landscape Design. \$5.00 Sample Video includes \$10 Discount Coupon. Satisfaction Guaranteed! Check, Visa, MasterCard. VEP, California Polytechnic State University, San Luis Obispo, CA 93407. 1-800-235-4146. 8/91

FREE PARTS CATALOG-- If you own a 36"-48"-52" walk behind mower and you feel you're paying too much for parts, call Preco Distributors toll-free and request our parts catalog. BELTS, BLADES, GRASS CATCHERS, WHEELS AND LOTS MORE! Replacement parts that fit: BOBCAT, BUNTON, KEES, EXMARK & OTHERS. 1 day shipping coast to coast available. All parts carry a 90-day warranty. Don't wait, call 24 hours a day. TOLL-FREE 1-800-428-8004, in Mass. 413-596-5505. PRECO DISTRIBUTORS, 97 Center St., Ludlow, MA 01056. TF

SERVICES

TRAINING PROGRAMS: Effectively train your new and experienced employees in the least amount of time with minimal management involvement. Complete weekly lesson packages including handouts, quizzes and documentation forms. Train at your location, at your convenience. Topics include pesticide safety and handling, agronomic and horticultural issues, customer service and sales, driver safety and more. Both lawn and tree and shrub care programs available. Recertification credits often available. Pesticide Control Technology Services. Call Paul Skorupa at 401-294-1384. 6/91

ATHLETIC FIELDS REBUILT: Baseball, Football, Soccer Fields rebuilt and sodded with BLUEGRASS SOD- A 160' X 360' Field \$20,000. Plus or minus 20% within 150 miles of Pittsburgh. CONSULTING on improving and maintaining existing fields. VICNOR FARMS, Connoquenessing, PA 16027. 800-842-0461. 6/91

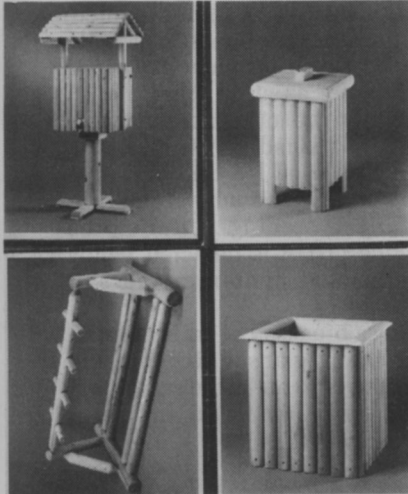
PRODUCTS from page 54

Spice up course with cedar accessories

From Green Pro, Inc. comes a line of cedar accessories for the golf course.

Among the company's offerings are included a tee box bench, wood waste container, soil and seed box and cooler stand.

The firm also manufactures a cedar log rack for the bag drop area. Green Pro says the accessories are maintenance free and competitively priced.



Circle No. 202 on Reader Inquiry Card

Life-size silhouettes add to scenery

Silawnets are life-size silhouettes which make eye-catching additions to lawns, gardens or golf courses. They are available in a variety of people and animals, including golfer silhouettes. They are constructed of durable colorfast black, rigid plastic.

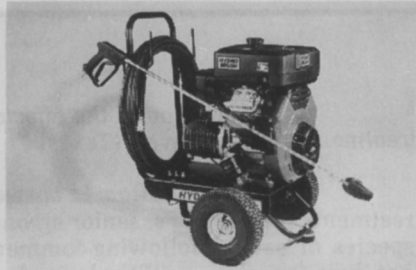


Circle No. 203 on Reader Inquiry Card

Features set washer apart from the pack

A new HydroBrush pressure washer line from Falkenberg, Inc. features engine sizes from five to 16 hp, power on demand throttle control idles and smooth start-up systems.

Falkenberg's line also boasts of labor-saving power nozzles that give



zero degree nozzle spray with a 25 degree fan.

The company's pressure washers also are equipped with fold-up handles and kick-down front braces as space savers during transportation.

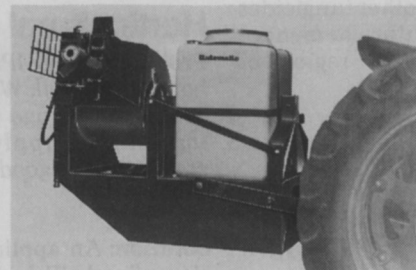
Circle No. 204 on Reader Inquiry Card

Heavy-duty sprayer takes on many tasks

From Automatic Equipment Manufacturing Co. comes the MC-50R model heavy-duty sprayer.

Features include a 50-gallon polyethylene tank, roller pump and suction hose connection for premixing chemicals.

The unit hitches to a tractor and has a triple V-belt drive.

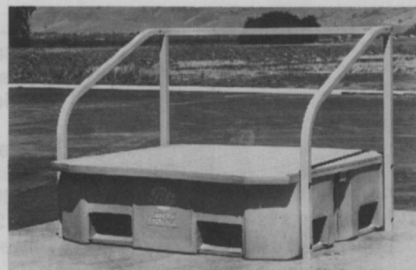


Circle No. 205 on Reader Inquiry Card

Spill containment pallets meet safety requirements

The Safe-T-Pallet from Safety Storage, Inc. of Hollister, Calif., complies with current regulatory agency requirements.

The pallets are designed to accommodate up to four 55-gallon drums or other types of containers weighing up to 5775 lbs. maximum storage capacity.



Circle No. 206 on Reader Inquiry Card

NO. ADVERTISER	PAGE NO.
101 B.A.S.F. Corp.	55
102 Bartlett Tree Experts	54
105 Cushman, Inc.	17
106 Cushman, Inc.	17
107 Cushman, Inc.	17
108 Cushman, Inc.	17
103 Davey Tree Expert Co.	22
104 Deere and Co., John	2-3
133 DowElanco	23
132 Drexel Chemical Co.	18
134 Grace Sierra Co.	49
109 ISK Bio Tech. Corp.	20-21
111 Jacobsen Div. of Textron ..	47
112 Jacobsen Div. of Textron ..	47
113 Lebanon Chemical Corp. ...	14
114 Lebanon Chemical Corp. ...	16
115 Lofts Seeds, Inc.	CV4
119 Maibo Manufacturing, Inc. ..	46
118 Mobay Corp./Dylox	35
116 Mobay Corp./Dyrene	CV3
117 Mobay Corp./Tempo	6-7
120 Monsanto Co.	29
121 Nor Am Chemical Co.	41
122 Olathe Manufacturing, Inc. ..	22
123 Reemay, Inc.	15
110 Roots, Inc.	27
124 Roots, Inc.	57
125 Sandoz Corp.	30-31
126 Service Master Co.	45
127 Tee 2 Green Corp.	CV2
128 Toro Co.	13
129 Turf Seed Co.	5
130 Turfco Manufacturing, Inc. ..	28
131 Valent USA Corp.	19
New Products	
205 Automatic Equipment Manufacturing, Inc.	59
192 DowElanco	53
197 Environmental Soil Systems, Inc.	53
204 Faulkenberg, Inc.	59
198 Gandy Co.	54
202 Green Pro, Inc.	59
196 Justrite Manufacturing Co. ..	53
193 Mobay Corp.	53
194 Power Up, Inc.	53
201 Rhone Poulenc Ag Co.	54
206 Safety Storage, Inc.	59
191 Scotts & Sons, O.M.	53
203 Silawnets	59
200 V & B Manufacturing Co. ...	54
199 Witco Industries	54
195 Zee Medical, Inc.	53

This index is provided as an additional service. The publisher does not assume any liability for errors or omissions.

PROBLEM MANAGEMENT

Treatments for oak wilt

Problem: Are there any fungicidal treatments being studied for oak wilt? (Ohio)

Solution: Yes, there are fungicidal treatments showing promising results on certain species of oaks. Ciba-Geigy representatives report that their experimental liquid fungicide, Alamo, is being used to manage oak wilt caused by *Ceratocystis fagacearum* on live oaks in Texas. At present, Alamo has a special label permit for use on oak wilt disease of live oaks, in Texas only.

The systemic fungicide is injected into the trees at the root flare, similar to the Dutch elm disease treatment technique with Arbotect. Ciba-Geigy representatives recommend that trees which have more than 30 percent canopy loss should not be treated. Preventive treatments are apparently more effective. They also suggest that trees which are within 150 feet of the affected trees and have greater potential for getting infected should be treated.

Ciba-Geigy suggests that for preventive treatments, use Alamo fungicide at 2 ml/liter per inch of trunk diameter. Use the therapeutic rate (3 ml/liter/inch trunk diameter) on trees that have specific oak wilt symptoms, but have less than 30 percent crown loss.

Let us hope that Alamo or similar other fungicides may become available in the near future to manage this destructive disease on oaks in other regions of the country.

Will rain nullify Cygon?

Problem: What effect would rainfall at midnight of the same day have on a birch tree sprayed with Cygon 4E at 6 p.m.? (Toronto, Canada)

Solution: Generally, two hours of drying weather is sufficient to prevent excessive pesticide from being washed off leaf surfaces with rain. Since Cygon is a systemic insecticide, it will be absorbed through leaf tissue and distributed within the plant. Once absorbed, the material is not subject to rain water washing. In your situation, there was about six hours time lapse between applicator and rain fall and, therefore, pesticide loss should not be a problem.

However, if the material remained on the foliage for an extended time without quickly drying, this may contribute to phytotoxicity and/or be subject to rain water washing. This would adversely affect the product efficacy and performance.

Read and follow label specifications for better results.

Repairing glycol damage

Problem: What can be done to correct the accidental spill of material used in our cooling and heating system. We believe it is ethylene glycol. The turfgrass

around the affected area is doing poorly. Will it recover? (Texas)

Solution: In answer to your question, Richard Rathjens, senior agronomist with Davey Tree, made the following comments:

"Ethylene glycol ($C_2H_6O_2$) is commonly used as an antifreeze in cooling and heating systems. Ethylene glycol is known to be toxic to plants in the landscape.

"Depending on factors such as the amount spilled, soil type, rainfall that occurred following the spill, etc., the accidental application of ethylene glycol to a lawn will probably kill the existing grass plants. Likewise, ethylene glycol in the soil can prevent new plants from becoming established. For this reason, the sod and soil to a depth of at least eight inches should be removed and replaced prior to reestablishing the lawn by sodding or seeding. If during the removal of soil ethylene glycol is detected below eight inches, the additional contaminated soil should also be removed."

Also, consider doing a bioassay of soil from the affected areas prior to seeding or sodding to make sure that the contamination from ethylene glycol is not going to present a problem in the future.

Horticultural oil vs. scale crawlers

Problem: In our IPM program, we would like to use horticultural oil. We are planning to use a first application to manage the eggs of scale insects. We are thinking of applying oil again to manage the crawlers. How good is oil against scale crawlers? (New York)

Solution: An application of horticultural oil (superior refined oil) during late winter or early spring will help manage the scale eggs. Oil will smother the egg mass, suffocate and kill them. Thorough coverage is important for good results. Often it is difficult to reach every scale. As a result, some will escape and hatch. The newly-hatched young nymphs are called scale crawlers, which can move around and reinfest the host.

Horticultural oil can be used to manage scale crawlers. Follow label specifications for good results. Avoid treating maples—beech, hickory and dwarf Alberta spruce. These plants are sensitive to oil spray and may experience phytotoxicity, particularly when stressed. Oil can also remove the bluish color of the blue spruce. It may take a few months to get the color back.



Balakrishna Rao is Manager of Technical Resources for the Davey Tree Co., Kent, Ohio.

Questions should be mailed to Problem Management, LANDSCAPE MANAGEMENT, 7500 Old Oak Boulevard, Cleveland, OH 44130. Please allow 2-3 months for an answer to appear in the magazine.