

September 4, 1990

7585 Ponce de Leon Circle
Atlanta, Georgia 30340-3119
Tel. (404) 449-6140
Telex: 981360 DEUTZATL
Fax: (404) 840-4244 - ENGINES
(404) 840-4288 - PARTS
(404) 840-4299 - ADM.

To Users of Small Diesel Engines

Ladies and Gentlemen:

Deutz Corporation of Atlanta, Georgia, and Ruggerini Motori S.p.A. of Reggio Emilia, Italy, have reached an agreement of importance to Diesel engine users in North America.

Deutz will market, support and service a number of modern, high-speed models out of the Ruggerini product offering especially selected for the requirements of the North American market. This addition extends Deutz' range downward for substantially increased competitiveness in smaller engines.

Starting today, the same experienced Deutz crew will offer these engines, product support, engineering and application assistance. Deutz will also provide parts and service availability for Ruggerini engines already operating in North America. We plan to duplicate the track record we have established in the market over the past 30 years.

We would appreciate a chance to tell you what we have to offer in the 4 to 30 HP range.

Thank you.

Sincerely,

DEUTZ CORPORATION



Werner Schmitz
President

P.S.: Fuel efficiency is in again!



PRODUCTS

Introducing two new vertical shaft engines

Teledyne Total Power now markets two new vertical shaft models of the Wisconsin Robin Sovereign engine series.

The WO1-170V is a single-cylinder, 5.5 hp engine that operates at 3600 rpm.

The WO2-560V is a twin-cylinder, 18-hp engine, that also operates at 3600 rpm.

The new models bring to 12 the number of engines available in the Sovereign Series.

Included in the series are seven horizontal shaft models with 4 to 18 hp. Five vertical shaft models have horsepower of 5.5 to 18. Every Sovereign model offers easy, dependable starting. Compact size and light weight, smooth, quiet operation, and long service life.

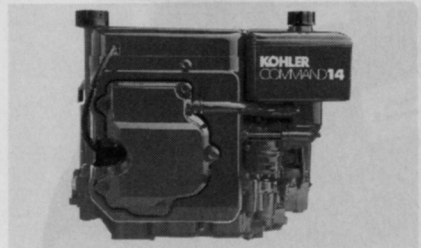
Teledyne Total Power says its engine models fit a wide range of lawn and garden equipment applications. **Circle No. 191 on Reader Inquiry Card**

New, 14-hp engine most powerful overhead

Kohler's new Command 14-hp engine is one of four models in this innovative line of vertical and horizontal shaft engines.

The most powerful model in Kohler's overhead valve engine series, the Command 14 is conservatively rated at 14 hp gross.

Features include Kohler's exclusive hydraulic valve lifter, high



torque at low rpm, a mechanical governor to maintain constant rpm, and a computer-designed balanced shaft which reduces first order forces while inhibiting engine vibration.

Circle No. 192 on Reader Inquiry Card

New shovel maneuvers well in tight spaces

Kobelco America, Inc. has introduced the Super Shovel, model SS-60, which it says is the first machine of its kind to enter the American market.

Small enough to pass through a

standard door frame and capable of digging to a depth of 3'4", the SS-60 was specifically designed to work in confined spaces and around obstacles.

The SS-60 is mounted on crawler treads, and powered by a 3.5-hp Ka-



wasaki engine with 12.3-cubic inch displacement.

Its compact dimensions, safety and ease of operation make it ideal for landscaping projects such as irrigation, ditch digging, flowerbed maintenance, and water features excavation.

Circle No. 193 on Reader Inquiry Card

Information manuals cover green industry

Nilsson Associates, green industry consultants based in Southington, Conn., has published an extensive business information reference library designed and written specifically for the green industry.

The management guides are the end result of over 20 years of experience and research in green industry contracting, management, accounting, marketing and sales.

These how-to management guides zero in on profit improvement, contract costing, sales, finance, operations and virtually every aspect of green industry business management. **Circle No. 194 on Reader Inquiry Card**

Business management easy with intelligence software

A new artificial intelligence software package for microcomputers is making it easier for landscapers to manage their businesses.

The new software, called the Management Information Query System, is from the Datasphere Division of Doane Information Services. It is an English language interface for Datasphere's Terra System.

The query system allows landscapers to search the many files and data bases kept by the Terra System and produce custom-designed reports.

For example, a landscaper could find out about all jobs performed by a certain individual or analyze the effect of a percentage increase in labor or material on the profitability of a job.

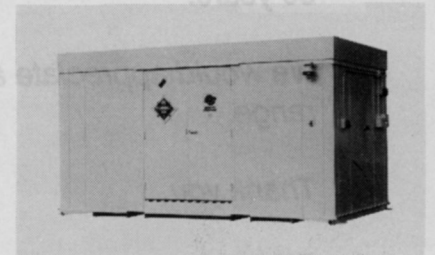
MIQS and the Terra System operate on MS-DOS microcomputers as well as multi-user networks. The software permits reports to be designed graphically on the computer screen. **Circle No. 195 on Reader Inquiry Card**

Storage building provides safe chemical storage

Safety Storage, Inc. of Campbell, Calif. announces the availability of its new, fire-rated model FR-30 storage building, designed to provide a prefabricated, relocatable structure for safe storage of hazardous liquids and other flammable materials.

FR-30 offers two-hour fire-rated walls extending to ground level, two-hour, fire-rated roof and ceiling and 1 1/2-hour fire-rated doors.

Building walls are constructed of layers of 18-gauge sheet steel and double-thick fire-rated gypsum boards separated by heavy-duty steel studs incorporated within a 3 1/2-inch air space. All materials are corrosion protected and interior surfaces are coated with chemical-resistant epoxy paint.



Circle No. 196 on Reader Inquiry Card

New transmission feature for more productivity

A 12x12-speed shuttle shift transmission for Models 1720 and 1920 Ford compact diesel tractors boosts productivity in loader and landscape work.

Available as an option to the standard 12x4 transmission, the 12x12 shuttle is synchronized for smooth, easy shifting.

With the shuttle, the operator can shift without coming to a complete stop, "feather" to the opposite direction and also change speed on the go.

As a result, cycle time is shortened for loading and other work that requires frequent direction change.

Circle No. 197 on Reader Inquiry Card

continued on page 70

CLASSIFIEDS

RATES: \$1.25 per word (minimum charge, \$40). Bold face words or words in all capital letters charged at \$1.50 per word. Boxed or display ads: \$105 per column inch-1x (one inch minimum); \$100-3x; \$95-6x; \$90-9x; \$85-12x. (Frequencies based on a calendar year). Agency commissions will be given only when camera-ready art is provided by agency. For ads using blind box number, add \$20 to total cost of ad per issue. Send ad copy with payment to Dawn Nilsen, LANDSCAPE MANAGEMENT, 1 East First Street, Duluth, MN 55802 or call 218-723-9483. Fax Number 218-723-9615.

BOX NUMBER REPLIES: Mail box number replies to: LANDSCAPE MANAGEMENT, Classified Ad Department, 1 East First St., Duluth, MN 55802. Please include box number in address.

BUSINESS OPPORTUNITIES

MAKE \$1000+ A WEEKEND AERATING LAWN AND SELLING SOIL CONDITIONER. GUARANTEED. Send for free information. Robin Pedrotti, 3403 Dorchester Dr., San Diego, CA 92123. 10/90

LEARN Professional Landscaping and Gardening at home. Accredited program provides thorough training in all phases of commercial and residential landscaping. Certificate awarded. Free booklet describes program and opportunities in detail. Lifetime Career Schools, Dept. A-415, 2251 Barry Ave., Los Angeles, CA 90064. 9/91



Environmental Care Inc CAREER OPPORTUNITY

Technical / Training person wanted to do field research and training with large maintenance contracting firm. Knowledge of landscape maintenance practices in western states desirable. Ability to work with others and problem solve is essential.

Please send confidential resume to:
Manager of Technical Services
Environmental Care, Inc.
825 Mabury Road
San Jose, CA 95133.

WANT TO BUY OR SELL A GOLF COURSE? Exclusively golf course transactions and appraisals. Ask for our catalog. McKay Golf and Country Club Properties, 15485 N. East Street, Lansing, Michigan 48906. Phone (517)484-7726. TF

CURB KING: Curbing machine that lays continuous concrete landscape borders. \$2695. Low investment, high returns. For information call 303-434-5337 or write P.O. Box 40567, Grand Junction, CO 81504. 11/90

Lawn, tree, and pest control business. Western Suburbs of Chicago. Approximately \$300,000 annually. Interested, financially qualified buyers only. Reply to LM Box 481. 10/90

HELP WANTED

NEED LANDSCAPE WORKERS? We can solve any labor problem you have. We have documented workers as well as foremen, leadmen, irrigators and architects available at a price you can afford. Call today! AMIGOS 214-634-0500. TF

GROUNDS MANAGEMENT MANAGER

New Jersey's most progressive, well-equipped Landscape Management Company seeks a motivated individual capable of managing one of our branch offices.

Individual must possess a horticultural degree and have at least 3 to 5 years managerial experience in the Grounds Management industry.

Excellent salary and benefits, commission program and company vehicle. Send your resume in confidence to:

EOE M/F
LM Box 482

MAINTENANCE SALES/SERVICE REPRESENTATIVE. Progressive, 35 year old San Francisco Bay area firm seeking long-term employees. Horticulture background, related degree preferred, sales experience helpful. Send resume to: Personnel Dept., CAGWIN & DORWARD, 1257 Quarry Lane, Suite 145, Pleasanton, CA 94566. 415-462-8881. 10/90

HELP WANTED: Manager for lawn and tree care division of large, full service landscape company. Must have related horticultural education and experience. Strong diagnostic abilities of tree and turf problems essential. Honest and enthusiastic personality required. Excellent future opportunity with company. Highly competitive salary plus benefits. Company established 45 years in the picturesque "Hamptons" of Long Island. Contact: Whitmore-Worsley, Inc., P.O. Box 10, Amagansett, NY 11930. 516-267-3756. Equal Opportunity Employer. 10/90

KT ENTERPRISES, INC., a commercial landscape management firm servicing the Washington, DC Metropolitan market, is now accepting applications for all departments for the 1990 season and beyond. All positions offer excellent salary, health benefits, retirement and, most importantly, an incomparable opportunity to work in a quality organization that will continue to offer professional satisfaction. All applicants should be experienced. Please send resume to Martha Sharlot, KT Enterprises, Inc., 4001 Westfax Drive, Fairfax, VA 22021. **LANDSCAPE MAINTENANCE:** Floral Installation Specialists, Turf an Ornamental Specialists, Pruning Specialists, Maintenance Supervisors. **LANDSCAPE INSTALLATION:** Landscape Supervisors, Landscape Installation Foremen, Hardscape Specialists, Equipment Operators. **IRRIGATION INSTALLATION:** Installation Supervisors, Installation Foremen, Golf Course Irrigation Specialists. **SALES: ALL DEPARTMENTS: Sales Representatives Designers, Estimators.** 11/90

Assistant superintendent needed for sod operation located in Powells Point, North Carolina, at the gateway to the Outer Banks. Turf related employment history a plus. Degree in agronomy or turf related field required. Warm and cool season grasses currently under production. Excellent salary and benefits available. Send resume to the attention of the Director of Operations at United Turf Inc., Route 1, Box 170, Powells Point, NC 27966. 10/90

"Consider all of your employment options in the irrigation and landscape industries. Call **Florapersonnel**, the international employee search firm for the ornamental horticulture industry. Completely confidential. Employer pays fee. **Florapersonnel, Inc.,** P.O. Box 1732, 1450 S. Woodland Blvd., Suite 201, DeLand, FL 32721-1732. (904)738-5151. Jeff Brower, Joe Dalton, Bob Zahra, CPC." TF

"AMERICANS ON THE MOVE" - Aggressive landscape company has immediate opening for a take-charge Chief Estimator. Experience required in estimating and bid preparation of large commercial, industrial and public works landscape, irrigation and site development projects. Permanent position with benefits. Salary commensurate with experience. Send resume to Mickey Strauss, American Landscape Companies, 7949 Deering Avenue, Canoga Park, CA 91304. TF

LANDSCAPE DESIGNER/SALESPERSON: Long-established design/build landscape firm has opening for landscape designer/salesperson. Three to five years design/build experience required. Send detailed resume to **HUNZIKERS INC.,** P.O. Box 397, Niles, MI 49120. 10/90

LANDSCAPE DIVISION MANAGER: well established, rapidly growing company seeks individual to take over for retiring manager. Individual must be able to run both a maintenance and a planting division simultaneously. Requires exceptional organizational/management skills as well as complete command of plant materials and maintenance techniques. For consideration contact David Gorter, 855 Skokie Highway, Lake Bluff, IL 60044. 708-615-0800. 10/90

Assistant Supervisor - Department of Facility Operations: Strong leader needed for multiple site field supervision and management of landscape maintenance, installation, irrigation, and nursery operations. Liberal benefits. Annual salary \$26,004. Send resume to: School Board of Palm Beach County, Department of Facility Operations, Attn: Joseph T. Lawson, 3300 Summit Boulevard, West Palm Beach, FL 33406. 407-687-7024/Landscape Section. 10/90

CEMETERY LANDSCAPE MANAGER. Award winning 225 acre cemetery and memorial park in Tampa Bay area seeks manager with A.S. Horticulture, Professional Certifications (PGMS, LMA). Three years experience with good organizational skills, Spanish language skills also helpful. Send resume with salary requirements to: Landscape Manager, 4207 E. Lake Avenue, Tampa, FL 33610. 10/90

LANDSCAPE MAINTENANCE PRODUCTION MANAGER: Rapidly growing Central Florida Landscape firm seeking an experienced production manager with strong people and organizational skills. Experience with large commercial accounts and a sincere desire to build a business based on customer service a must. Strong Salary and Benefits. Must relocate to Orlando. Send resume to: Mr. Khalsa, 1174 Florida Central Pkwy., Longwood, Florida 32750. 11/90

BOZZUTO LANDSCAPING COMPANY- An expanding firm in the Washington D.C., Virginia and Maryland markets is currently looking for qualified, career oriented professionals. Opportunities are available in the following departments: **COMMERCIAL GROUNDS MAINTENANCE:** Supervisors, Crewleaders and Crewpersons. **LANDSCAPE INSTALLATION:** Supervisors, Foremen and Crewpersons. **HYDROSEEDING AND EROSION CONTROL:** Foremen and Crewpersons. Benefits include vacation and sick leave, a super health care package, disability and retirement. Send resumes to: Thomas W. Davis, 15127 Marlboro Pike, Upper Marlboro, Maryland 20772, or call 301-627-6500. 11/90

Landscape Supervisor: Established Michigan Contractor looking for self-motivated individual with 5 years minimum experience to manage crews and oversee landscape installation. Send resume and salary requirements to: DeAngelis Landscape Incorporated, 22425 Van Horn Road, Woodhaven, Michigan 48183. EOE. 12/90

Position open for Commercial Landscape Maintenance Foreman: Minimum 2 years management experience w/degree. Strong turf background required. Rapid growth potential, good salary package. Send resume to New Garden Landscape Management, P.O. Box 549, Summerfield, NC 27358. 10/90

WANTED - MANUFACTURERS REPRESENTATIVES AND DISTRIBUTORS - to represent a line of high quality hydroseeding tackifiers. For more information, contact PRSM, Inc. at (215)430-3960. 11/90

EDUCATIONAL OPPORTUNITIES

FREE CATALOG of educational training videotapes. Over 50 titles including Irrigation, Pesticides, Safety, Pruning, Tool Use, Plant Selection, Soils and Planting, Turf Management, Xeriscape, IPM. Money Back Guarantee! VEP - California Polytechnic State University. 1-800-235-4146. 12/90

FOR SALE

PIPE LOCATOR INEXPENSIVE! Locates, traces underground drain, water pipe lines of clay, PVC, ABS, steel, cement. Finds sprinklers, valves, clogs. Bloch Company, Box 18058, Cleveland, Ohio 44118. (216)371-0979. TF

PORTABLE STUMP CUTTER - 10 to 16 H.P. or Diesel optional, 4 speed transaxle 28 1/2" to 34 1/2" wide. \$1,795, up. Kinetic Stump Cutter, Inc. 1-800-422-9344. 10/90

LAWN SEED: Wholesale. Full line of top quality grasses. Improved bluegrass varieties, tall fescues and fine bladed ryegrasses. We specialize in custom mixing. Oliger Seed Company, 89 Hanna Parkway, Akron, OH 44319. Call collect (216)724-1266. TF

HYDRO-MULCHERS AND STRAW BLOWERS New and used. **JAMES LINCOLN CORPORATION**, 3220 S. Jupiter Rd., Garland, TX 75041. (214)840-2440, (800)527-2304. TF

FOR SALE: (4) TREE/LAWN SPRAYING TRUCKS. (2) 1990 GMC 5,000's (ISUZU WR 5's). 4 months old, 5 speed, diesel, 14 ft. flatbed, power steering, 2 year unlimited mileage manufacturers warranty. IPM set-up, 4 tanks (2-300 gal./1-200 gal./1-100 gal.). Dual hose reels-large Hannay reel 300 ft. 3/4" hose, John Bean 785 spray gun, small Hannay reel 300 ft. 1/2" hose/JD-9 spray gun, dual spray systems, 30HP Wisconsin engine, hydro pump Model D1504-39.6 gpm, Briggs & Stratton engine, hydro pump Model D50-12.7 gpm. 18,000 lbs. GVW. Cost new \$41,000 each, sell \$31,000 each. ALSO (2) 1990 DODGE D350's, 7 year 70,000 mile warranty, 4 speed, V-8 engine, power steering, 12 ft. flatbed, 3 tanks (2-300 gal./1-100 gal.). Dual hose reels-large Hannay reel 300 ft. 3/4" hose/Bean 785 gun, small Hannay reel 300 ft. 1/2" hose/JD-9 spray gun, dual spray systems, 30HP Wisconsin engine/hydro pump-D1504-39.6 gpm, Briggs & Stratton engine/hydro pump-D50-12.7 gpm. Cost new \$32,000 each, sell \$21,500 each. Contact owner for details. 201-633-8398 days/516-331-4713 eves. Photos available for all trucks. 10/90

Husler zero turning radius mowers: 2-Model 251 18 hp 50" deck, Model 272 23 hp 72" deck, Model 305D diesel 20 hp 72" deck, Model 262 18 hp 60" deck, Model 400 Rangewing 24 hp 1-72" deck, 2-40" decks, Model 400 D 24 hp 72" deck. *Mowers only in operation 2 seasons and have been completely renovated for a new season. Owner highly motivated to sell. Call Mr. Khalsa. 407-831-8101. 11/90

SOD blends of four bluegrasses or bluegrass and perennial ryegrass blends shipped via our trucks within 300 miles of Pittsburgh. Penncross bent sod shipped within 1,000 miles of Pittsburgh. Vicnor Farms, Connoquenessing, Pennsylvania 16027. 412-789-7811. 10/90

5 CTL Turf-runner 1900D Mowers with 6' decks. Kubota diesel engines. These are commercial machines. (405)853-2253, (405)853-2551. 12/90

BENT GRASS available for immediate pick-up or delivery. For information call Jade Run Turf and Sod Farm: 800-332-1220. 10/90

NEW AND USED BROUWER EQUIPMENT: Mowers - VACS - Fork Lifts - Harvesters - and full line of replacement parts. Contact Glenn or Ed Markham at 1-800-458-3644. TF

1978 Chevy C-60, 800 Gallon Tank W/Pump and Hose. Ready to spray. Call Steve at 918-258-3566. Price \$3,900 or best offer. 10/90

1986 GMC Stake Body Truck, V-8, 4-spd. PS, PB, Casser, 11 ft. Body, 1,000 Lb. Hyd. Lift Gate, New Spare 24K, V.G.C. \$10,900. 708-257-8608. 10/90

Classen 5 HP Lawn Aerator, Used 2 Seasons, Like New w/extra Tines. 708-257-8608. 10/90

SPYDERS - New/Used/Rebuilt. New Kohler engines, short blocks and a complete line of engines and Spyder replacement parts. New Style Nichols-Fairfield Torque Hub Kits, heavy duty Wilton Caster Kits, Remote Air Cleaner Kits, heavy duty Carriage Side Plates. We repair and rebuild hydraulic pumps and motors for your Spyder. Same day service. Call or Write: Mobile Lift Parts, Inc., 5402 Edgewood Rd., Crystal Lake, IL 60012. 815-455-7363; 1-800-397-7509. 10/90

Tuffex 300 gal. Fiberglass Pick-up Truck Tank w/5 HP Eng., Hydro. Pump, Elec. Hose Reel & Gun. G.C. \$2,800. 708-257-8608. 10/90

ZOYSIA MEYERS Z-52 SOD OR SPRIGS. EXCELLENT QUALITY DELIVERED ANYWHERE AT REASONABLE PRICES. ALSO ROW PLANTING AVAILABLE. DOUBLE SPRINGS GRASS FARM, SEARCY, AR. 1-800-458-4756. TF

Bulk bark mulch and woodchips, hardwood, pine, and cypress, lumber, timbers, stone products. Many other landscape and nursery supplies. Express delivery, UPS, next day shipment. **LANDSCAPE SUPPLY HOTLINE!** Garick Corporation and Landscapers Wholesale Inc., OHIO-1-800-631-1395, U.S.A.-1-800-322-7770. 10/90

FOR SALE: Toro 7 gang spartans, sharpened. \$5,250. Jake fairways 7 gang rebuilt, sharpened 10 blade. \$5,000 firm. Photos available. (313)653-5695. 10/90

1988 LESCO 500 GAS FAIRWAY MOWER, 9 BLADE UNIT. USED ONLY 1 SEASON, 280 HOURS. CALL 413-568-1636 ASK FOR MIKE OR KEITH. 10/90

PAUL FLORENCE Turfgrass: Quality seed for the Turf Professional. Elite Bluegrasses, Fine-Leaf Ryegrasses, and Turf-Type Tall Fescues. Custom mixing our specialty. Silva-Fiber mulch and supplies for hydro-seeders. Quality Elite Bluegrass Sod. Call us! (513)642-7487. 13600 Watkins Rd., Marysville, OH 43040. TF

Finn Hydroseeders, Mulch Spreaders, Krimpers, Pit Burners, Fiber Mulch & Tackifiers. New & Used. Wolbert & Master, Inc., P.O. Box 292, White Marsh, MD 21162, 301-335-9300, 1-800-234-7645. TF

COLORADO GOLF COURSE: Nine holes with land to expand (177 acres) 2 streams, 3 ponds and magnificent mountain range view. Water augmentation just completed with zoning approved for 18 homesites plus 1 commercial site. Course 3 years old; \$650,000. Box 30, Westcliffe, CO 81252. 10/90

DAKOTA FIND TREE TRANSPLANTER

Lightweight, Variable Size Rootball (16" - 28"), Component Adaptable (sprayer, logsplitter, dump box, post-hole digger). Available in 3 models (towable, bucket mount, 3 pt.).

MID DAKOTA CORP.
Box 728 • Garrison, ND 58540
Phone (701) 337-5619 or 1-800-327-7154



High quality professional horticulture training videos. 100% satisfaction guaranteed! Call or write for a free color catalog. San Luis Video Publishing, P.O. Box 4604, San Luis Obispo, CA 93403. Tel: (805)545-5426. Fax: (805)545-5423. 10/90



OUR REPUTATION PRECEDES US.

- 1986: #1 IN TRUCK CUSTOMER SATISFACTION
- 1987: #1 IN TRUCK CUSTOMER SATISFACTION
- 1988: #1 IN TRUCK CUSTOMER SATISFACTION
- 1989: MOST TROUBLE-FREE TRUCK LINE IN AMERICA
- 1990: #1 IN TRUCK CUSTOMER SATISFACTION
- 1990: MOST TROUBLE-FREE TRUCK LINE IN AMERICA

We've always believed that if we made good trucks, word would get around. And that's what's happening, if our rankings in recent J.D. Power and Associates surveys are any indication. This year, for the fourth time in the last five, our entire line of trucks ranked number one in customer satisfaction.*



And Mazda received the award for most trouble-free compact truck line in America for the second straight year.** We think that's a pretty good indication of what you, as a fleet operator, can expect from Mazda.

Choose from a complete range of models, 2- and 4-wheel drive, and a choice of engines to suit any purpose.

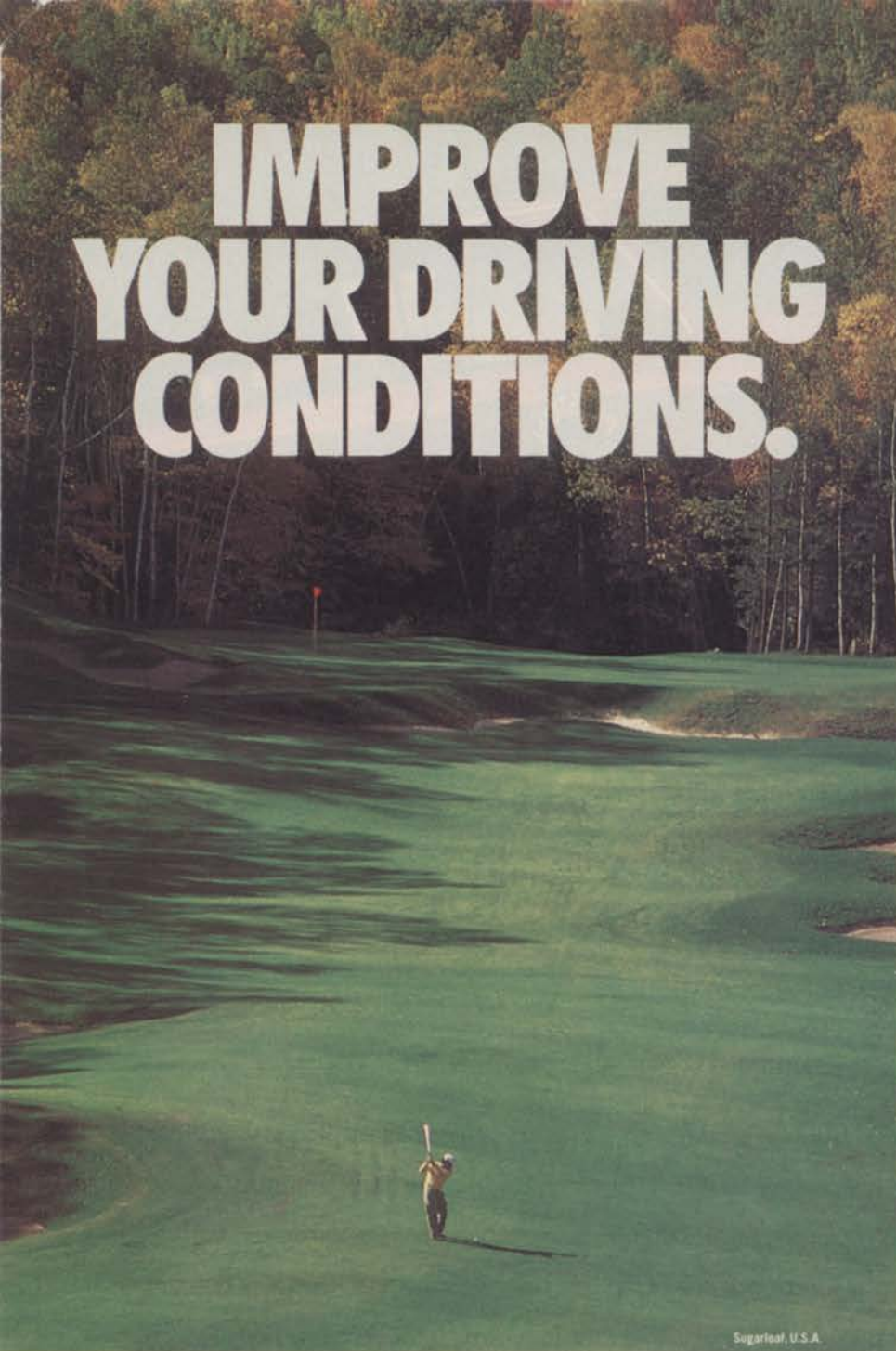
All with standard features like confidence-inspiring rear anti-lock brakes. And all backed by our 36-month/50,000 mile, no-deductible, "bumper-to-bumper" warranty—one of the best basic warranties† in the truck business.

To get the lowdown on the complete line of tough, reliable Mazda trucks, call our National Fleet Sales office at (714) 727-6453. As you'll quickly see, your business can benefit from choosing Mazda. Because only our reputation precedes us.

*J.D. Power and Associates 1986, 1987, 1988, 1990 Light Duty Truck Customer Satisfaction with Product Quality and Dealer Service.SM **J.D. Power and Associates 1989 and 1990 Compact Truck Initial Quality Survey.SM †Based on owner reported problems during the first 90 days of ownership. †Contact the National Fleet Sales Office for limited-warranty details.

mazda
IT JUST FEELS RIGHT.™

IMPROVE YOUR DRIVING CONDITIONS.



Sugarloaf, U.S.A.

ORTHENE® Turf, Tree & Ornamental Spray keeps pests out of your club.

Stop pests from playing a round on your course with ORTHENE Turf, Tree & Ornamental Spray. One treatment provides a broad spectrum of protection for turf as well as a wide variety of trees and ornamentals.

ORTHENE kills quickly on contact, then by systemic action. So you'll keep hard-to-kill pests like mole crickets, armyworms and leafhoppers under

control. ORTHENE supplies long-lasting residual action against other insects including tent caterpillars, aphids and thrips.

ORTHENE Turf, Tree & Ornamental Spray. It's more than enough to drive unwanted pests right off your course.

ORTHENE® Turf, Tree & Ornamental Spray

Avoid accidents. For safety, read the entire label including precautions. Use all chemicals only as directed. Copyright © 1990 Valent U.S.A. Corporation. All rights reserved. ORTHENE is a registered trademark of Chevron Chemical Co.



Circle No. 139 on Reader Inquiry Card

68 LANDSCAPE MANAGEMENT/OCTOBER 1990

Super Lawn growing mat is imbedded with high quality grass seeds. Rolls 5' X 50' = 250 sq. ft., \$45.50. Weight 30 pounds. Wild flower growing mat imbedded with 20 varieties of wild flower seeds. Rolls 2 1/2' X 10' = 25 sq. ft., \$9.95. Weight 3 pounds. Call 1-800-321-6888. 10/90

REINCO HYDROGRASSERS and power mulchers in stock. Opdyke Inc. (Philadelphia Area) 215-721-4444. TF

REPS WANTED

Sales Representative: Great opportunity for energetic, self-motivated individual for full time sales. Interesting and challenging work in So. California for a distributor of specialty agricultural chemicals. PCA license and/or degree in biological science required. Turf/landscaping experience preferred. Excellent company benefits. EOE. Non Smoking. Send resume: P.O. Box 1117, Cerritos, CA 90702. 10/90

SERVICES

ATHLETIC FIELDS renovated and resodded, stripped, tilled, fertilized, soil amendments added, graded and sodded. \$20,000 plus or minus 20% within 150 miles of Pittsburgh. Vicnor Farms, Connoquenessing, Pennsylvania 16027. 412-789-7811. 10/90

USED EQUIPMENT

NEW and USED EQUIPMENT--Asplundh, Hi Ranger and Lift-all forestry bucket trucks, Chipmore wood chippers. Mirk, Inc., (216)669-3567, (216)669-3562, 7629 Chippewa Road, Orrville, Ohio 44667. TF

BUCKET TRUCKS, Straight Stick, Corner Mount and Knuckle Boom Cranes. Brush Chippers - New Morbark Disc Type, New Woodchuck Drum Type. Best prices anywhere. Used Chippers - Asplundh, Woodchuck, etc. 2 to 8 usually in stock. Sprayers, Dumps, Stakes, Log Loaders, Crew Cab Chip Box Dumps, Railroad Trucks, 50 in stock. Sold as is or reconditioned. Opdyke's, Hatfield (Philadelphia Area) 215-721-4444. TF

TRACTORS: One Case, Model 685 (600 hrs.) and one Ford, Model 6610 (760 hrs.), each with Mott 74" left and right and 88" rear mowers. Used one season. \$50,000 both; \$26,000 each. Equipment located in Columbia, SC. Call 301/345-4654. 10/90

Roker 40" Tree Spade - \$3800. Hydrobrute 30" Tree Spade - \$2500. All in good working condition, ready to go to the field. **CLOVERDALE NURSERY**, Boise, ID (208)375-5262. 10/90

BUCKET TRUCK: Hi Ranger 65', 57', 50'. Skyworkers with chip boxes. Asplundh bucket trucks with chip boxes. Asplundh brush chippers. Bean 55 gal. sprayers. Pete Mainka Enterprises, 633 Cecilia Drive, Pewaukee, WI 53072. 414-691-4306. TF

PENNINGTON

Research...Production...Quality...Personal Service...
WE DELIVER!



PENNINGTON Covers the nation!

Finelawn 1
TURF TYPE TALL FESCUE

Finelawn 5GL
TURF TYPE TALL FESCUE

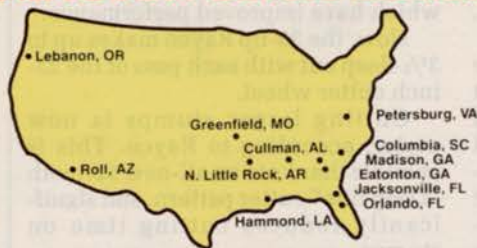
Wrangler
TURF-TYPE TALL FESCUE

TRIAD
TURF TYPE TALL FESCUE BLEND

PERFECTA
DURABLE TALL FESCUE MIXTURE

HUNTSVILLE
KENTUCKY BLUEGRASS

FLYER
CREEPING RED FESCUE



Pennington Subsidiaries

- | | |
|--|--|
| Pennington Seed, Inc. of Madison
Madison, GA (404) 342-1234 | Pennington Seed, Inc. of Greenfield
Greenfield, MO (417) 637-5979 |
| Pennington Seed, Inc. of Columbia
Columbia, SC (803) 771-4222 | Pennington Seed, Inc. of Louisiana
Hammond, LA (504) 386-7611 |
| Pennington Seed, Inc. of Cullman
Cullman, AL (205) 734-9486 | Pennington Seed, Inc. of Virginia
Petersburg, VA (804) 732-4769 |
| Pennington Seed, Inc. of Orlando
Orlando, FL (407) 295-6271 | Mid-South Seeds, Inc.
N. Little Rock, AR (501) 945-1474 |

Production Facilities

- | | |
|---------------------------------------|---------------------------------|
| CACTUS SEED COMPANY, INC.
Roll, AZ | PENNINGTON SEED, INC. of Oregon |
| GRO-TEC, INC. Eatonton, GA | |

Insure Your Stand, Ask For

National WATTS
1-800-543-1814

For additional information write
PENNINGTON SEED, INC. Turf Dept.
P.O. Box 290 Madison, Georgia 30650



TRIPLE PLAY

ELITE PERENNIAL RYEGRASS BLEND

Stallion
TURF TYPE PERENNIAL RYEGRASS

SUNRISE

Two Forty Six
TURF TYPE PERENNIAL RYEGRASS

PEBBLE BEACH
Perennial Ryegrass

Chateaub
PREMIUM KENTUCKY BLUEGRASS

CHEYENNE
TURF TYPE BERMUDAGRASS

Walk-behind mower for commercial users

The W5021-PCC walk-behind mower is the newest addition to Kubota Tractor's commercial turf maintenance line.

The mower is equipped with a 5-hp, 8.91-cubic inch overhead valve engine that delivers high torque at low speeds, so it easily handles a variety of terrains. With long-lasting components like cast-iron cylinder sleeves, cast-iron flywheel and ball-bearing supported crankshaft, the mower is designed with built-in durability.

The large capacity fuel tank minimizes the need for refueling. High-suction turbo fan produces Turbo-Suction, inhaling grass, leaves and twigs, and sweeping up debris and leaving behind nothing but a well-maintained lawn.

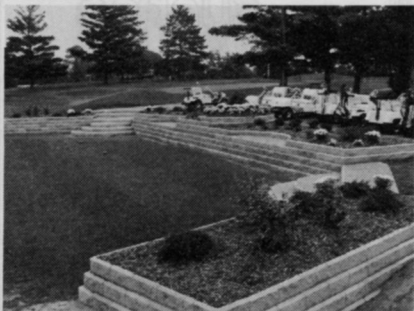
Circle No. 201 on Reader Inquiry Card

Retaining wall system used by many sectors

The landscape, golf and roadside maintenance industries can benefit from the many applications of mortarless Allan Block concrete retaining wall system.

"We've seen an immediate acceptance of Allan Block for many different applications—residential and commercial landscaping, roadway construction and golf course design," says Robert Gravier, product designer and president of Allan Block Corp., located in Minneapolis.

Allan Block is a patented landscape retaining wall system which does not require mortar, footings or pins, and can be used in a variety of site and soil conditions. The block is uniquely designed with a raised lip on the front upper edge, allowing blocks to interlock without mortar as they are stacked.



Circle No. 198 on Reader Inquiry Card

Edging system holds stonework in place

Bric-Edg is a new landscape edging system from Oly-Ola Sales of Villa Park, Ill.

The PVC edging is designed specif-

ically to support and contain bricks, cobblestones or patio blocks. It can be used for sidewalk, driveway, courtyard or patio installations.

Lightweight and easy-to-install, Bric-Edg is available as a rigid edging, or, for contoured or circular areas, in a flexible V-cut style that can be curved to a radius of about 36 inches.

Oly-Ola Sales says the Bric-Edg is suitable for use in any climate. Once



installed, an invisible, clean line is formed between the brickwork and adjacent areas.

Circle No. 199 on Reader Inquiry Card

Stump cutter improved with new features

The Rayco RG-1635A stump cutter has three new standard features which have improved performance.

Now, the 35-hp Rayco makes up to 3 1/2-inch deep cut with each pass of the 23-inch cutter wheel.

Cutting larger stumps is now easier, according to Rayco. This is possible thanks to an all-new 32-tooth "Deep Bite" cutter pattern, and significantly reduces cutting time on stumps.

Chip collection capacity has been increased to 22 cubic feet to handle more chips. The larger chip capacity, coupled with the units exceptionally big cutting dimensions, are two performance features that enable this 35-hp machine to tackle big stumps easily.

Dual cross-travel cylinders control the speed at which the cutter wheel slices through the stump. Cylinders



feed at the same rate on inclines.

Circle No. 200 on Reader Inquiry Card

AD INDEX

NO.	ADVERTISER	PAGE NO.
101	American Cyanamid (Regional)	71
102	Briggs & Stratton Corp. ...	20-21
103	Cascade International Seed Co.	54
104	Cushman	CV3
297	Cushman	27
105	Cushman	41
106	Cushman	41
107	Cushman	41
108	Cushman	41
109	Deutz Corp.	61
110	Deere and Co., John	2-3
111	DowElanco/Reemay	24-25
112	Grace Sierra	47
213	Gravely International, Inc. ...	57
114	ICI Americas, Inc.	33
115	Jacobsen Div. of Textron ...	51
116	Lebanon Chemical Corp. ...	6-7
117	Lesco, Inc.	23
118	Lofts Seeds, Inc.	CV4
119	Mazda Motor of America, Inc.	67
120	Mitsubishi Motor Sales of America, Inc.	53
121	Mustang Manufacturing, Inc.	22
122	Nor Am Chemical Co.	59
123	Olathe Manufacturing, Inc. ...	26
124	Olathe Manufacturing, Inc. ...	26
125	Olathe Manufacturing, Inc. ...	26
126	Oregon Fine Fescue Commission	43
127	Oregon Tall Fescue Commission	44
128	Pennington Seed, Inc.	69
129	Promark Products, Inc.	52
130	Ransomes, Inc.	49
131	Scotts Proturf, O.M.	28-29
132	Standard Tar Products Co., Inc.	26
295	Simplicity Manufacturing, Inc.	45
134	Tee 2 Green Corp.	CV2
135	Toro Co.	12-13
214	Turf Seed Co.	5
137	Turf Merchants, Inc.	39
138	Tecumseh Products Co.	55
139	Valent USA Corp.	68
140	Yazoo Manufacturing Co. ...	34
Literature Roundup		
150	Bandit Industries, Inc.	36
151	Bowie Industries	37
152	Coron Corp.	36
153	DowElanco/Gallery	35
154	DowElanco/Rubigan	35
155	DowElanco/Surflan	35
156	DowElanco/Cutless	35
157	Growth Products	36
158	Mobay Chemical Co.	37
159	Pennington Seed Co.	36
160	Proprietary Seed, Inc.	37
161	Roots, Inc.	37
162	UAP Specialty Products ...	36
163	Walker Manufacturing Co. ...	36
164	Woods Division of Hesston Corp.	36
165	Woods Division of Hesston Corp.	36

This index is provided as an additional service. The publisher does not assume any liability for errors or omissions.