

# Avoid Running Into Problems.

Announcing a turning point in mower history. The Reelmaster® 216 from Toro. It's nimble. Lightweight. And extremely maneuverable. Perfect for mowing around trees, signs, any obstacle standing in your way. And perfect for formal mowing and cutting on slopes.

For added performance, traction and versatility, the Reelmaster 216 features 3-wheel drive. Plus quick-adjusting height of cut. Options include grass catchers and a choice of front rollers that let you adapt easily to varying needs.

The Reelmaster 216 is so easy to operate that anyone can become an expert on the first ride. One lever con-

trols the cutting reels. One pedal controls the forward and reverse speeds and the braking. It's that simple.



For all-purpose mowing, there's nothing as agile as the Reelmaster 216 from Toro. It's a great way to steer clear of trouble. For a demonstration, call your local distributor or contact Toro at the address below.

**TORO**

The Professionals  
That Keep You Cutting.

\*Reelmaster® and "Toro" are registered trademarks of The Toro Company. ©1989 The Toro Company, Commercial Marketing Services, 8111 Lyndale Av. So., Minneapolis, MN 55420

Circle No. 158 on Reader Inquiry Card

# BOOKSTORE



**410 - DISEASES & PESTS OF ORNAMENTAL PLANTS**  
by Pascal Pirone  
This standard reference discusses diagnosis and treatment of diseases and organisms affecting nearly 500 varieties of ornamental plants grown outdoors, under glass or in the home. Easy to understand explanations of when and how to use the most effective fungicides, insecticides and other control methods. **\$37.95**

**415 - INNOVATIVE APPROACHES TO PLANT DISEASE CONTROL**  
by Ian Chet  
Brings together alternative approaches and methods that have potential to control diseases caused by fungi, bacteria and viruses. Major concepts of disease control discussed include biological control systems, their possible mechanisms, potential application and genetic improvement. **\$52.50**

**800 - THE GOLF COURSE**  
by Cornish and Whitten  
The first book ever to give the art of golf course design its due, and golf course architects the credit and recognition they deserve. 320 pages and 150 color and black and white photographs. Traces the history and evolution of the golf course, analyzes the great courses, shows how they were designed and constructed. **\$35.00**

**690 - INSECTS THAT FEED ON TREES AND SHRUBS**  
by Johnson and Lyon  
Essential information for identifying more than 650 insect pests and the injuries they cause. More than 200 color illustrations. **\$49.95**

**500 - THE 1989 PESTICIDE DIRECTORY**  
by Lori Thomson Harvey and W.T. Thomson  
A Guide to Producers and Products, Regulators, Researchers and Associations in the United States. For the person who needs to know anything in the United States pesticide industry. **\$75.00**

**010 - ADVANCES IN TURFGRASS PATHOLOGY**  
by Joyner and Larsen  
Leading U.S. turf pathologists report on turfgrass diseases, pythium blight, snow molds, fairy rings, leaf spot of Kentucky bluegrass in Minnesota, initial field fungicide screening, turfgrass disease resistance, etc. Contains new ideas on how to combat turfgrass problems. **\$27.95**

**235 - LAWN CARE: A HANDBOOK FOR PROFESSIONALS**  
by H. Decker, J. Decker  
Written by turfgrass professionals, this handy guide will be invaluable for playing field managers, golf course managers, or any lawn care practitioner. Covers all aspects of turfgrass management. **\$36.00**

**645 - MANAGEMENT OF TURFGRASS DISEASES**  
by J.M. Vargas  
Identifies turfgrass diseases by description and illustration. Includes a holistic approach to healthy turf and lawns. Presents practical management strategies for golf courses, lawns and athletic fields. 204 pages, illustrated. **\$26.70**

**620 - TURF MANAGEMENT HANDBOOK**  
by Howard Sprague  
Practical guide to turf care under both healthy and poor turf conditions. Chapters cover turf in cooler and warmer regions, fertilizer use, regular turf care, weed and disease control and special turf problems. Useful seasonal schedules for management of turf areas. **\$25.25**

**510 - HORTUS THIRD**  
from Cornell University  
A 1,300 page concise dictionary of plants cultivated in the United States and Canada. A reference which every horticulture professional should have. **\$135.00**

**810 - LIABILITY AND LAW IN RECREATION, PARKS AND SPORTS**  
by Ronald A. Kaiser, J.D.  
A fact-filled reference that all recreation professionals should have to steer clear of lawsuits resulting from athletic and recreation participant injuries. Uses layman's terms and an analysis of crucial court cases to provide you with a host of recommendations and risk management guidelines. **\$33.00**

**125 - SCIENTIFIC GUIDE TO PEST CONTROL OPERATIONS**  
by G.W. Bennett, J.M. Owens, R.M. Corrigan  
Fourth Edition. New chapters on fumigation, urban wildlife, special facilities, plus updated, improved chapters on pesticides, cockroaches, birds, termites, equipment, sanitation, stored product pests and more. Don't be without this updated edition. **\$49.95 Domestic All Others \$60.00**

**220 - CONTROLLING TURFGRASS PESTS**  
by Shurtleff, Farmanian, Randell  
New comprehensive guide provides the most up-to-date information available on the identification, biology, control and management of every type of turfgrass pest. **\$36.00**

**640 - TURF IRRIGATION MANUAL**  
by James Watkins  
A guidebook for engineers, architects, designers and contractors. Keeps pace with the latest developments in turf and landscape irrigation. Specific chapters devoted to rotary sprinkler design systems. Golf course design systems and expanded engineering and reference material. **\$27.25**

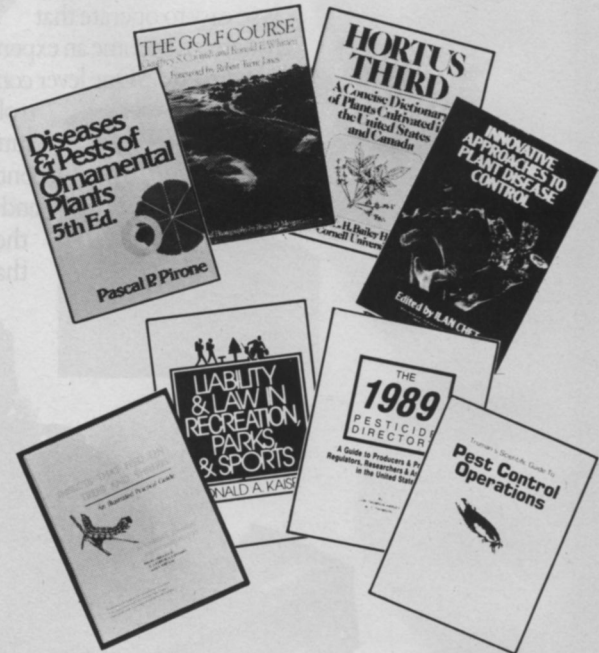
**630 - TURFGRASS: SCIENCE AND CULTURE**  
by James Beard  
Comprehensive basic text and reference source used in many leading university turf programs. Includes findings of current research compiled from more than 12,000 sources. **\$42.00**

**110 - TURF MANAGERS' HANDBOOK-Second Edition**  
by Daniel and Freeborg  
ENTIRELY UPDATED. A practical guide for the turf practitioner. Chapters on grasses, growth regulators and diseases have had extensive modification. Innovations resulting from research and practice have been added to reflect the current techniques available for turf managers. **\$32.95**

**230 - LAWNS-Third Edition**  
by Dr. Jonas Vangris and Dr. William A. Torello  
Designed as a textbook or a practical usage manual, this book has been completely brought up-to-date. Care of lawns and turfgrass, from selection of varieties to maintenance of established grass is completely covered. **\$25.95**

**225 - TURFGRASS MANAGEMENT**  
by A.J. Turgeon  
Revised edition. Covers the latest developments in turfgrass science and technology. Heavily illustrated with dozens of new drawings. Provides specific recommendations for applying the newest pesticides, fertilizers and other materials to combat turfgrass problems. A valuable reference for diagnosing problems and determining their causes. **\$42.00**

**615 - TURF MANAGEMENT FOR GOLF COURSES**  
by James Beard  
Written by an eminent turfgrass researcher, this USGA sponsored text is an ideal reference and "how to" guide. Details all phases of golf course design and construction, turf management, course administration, irrigation, equipment and disease and pest control. Fully illustrated. **\$52.75**



**Cost Data for Landscape Construction 1989**  
by Kathleen W. Kerr, Editor  
An updated unit cost data reference for designers and cost estimators. Developed to fill the tremendous need for detailed landscape construction cost data. Laid out in easy-to-use CSI format. Annual. **\$35.00**

**Landscape Design**  
A Practical Approach  
by Leroy Hannebaum

**LANDSCAPE MANAGEMENT**  
Planning and Maintenance of Trees, Shrubs and Turfgrasses  
by James R. Feucht, Jack D. Butler

**345 - COST DATA FOR LANDSCAPE CONSTRUCTION 1989**  
Kathleen W. Kerr, Editor  
An updated unit cost data reference for designers and cost estimators. Developed to fill the tremendous need for detailed landscape construction cost data. Laid out in easy-to-use CSI format. Annual. **\$35.00**

**300 - LANDSCAPE DESIGN: A PRACTICAL APPROACH**  
by Leroy Hannebaum  
Geared for the commercial designer/salesperson, this is a one-stop guide to the landscape design process. Covers the entire highly competitive field including design analysis techniques, pointers on land forms, specialized business landscaping methods, environmental design guidelines, specifications, estimations, bids. **\$41.00**

**305 - LANDSCAPE MANAGEMENT**  
by James R. Feucht and Jack D. Butler  
Planting and Maintenance of Trees, Shrubs, and Turfgrasses. Describes the basic principles of cultural management of installed landscapes. The important factors of plant growth, soils and fertilizers, improved planting techniques and new pruning techniques, integrated pest and disease management, and spray-equipment calibration and care are all featured. **\$29.95**

# BOOKSTORE

## 370 - LANDSCAPE OPERATIONS: MANAGEMENT, METHODS & MATERIALS

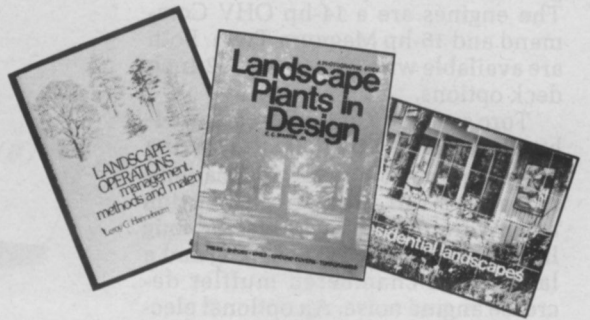
by *Leroy Hannebaum*  
An in-depth examination that combines technical training in landscape science with methods of accounting, business management, marketing and sales. Discusses effective methods for performing lawn installations, landscape planting and maintenance. Step-by-step accounting calculations are explained in simple terms. **\$38.00**

## 365 - LANDSCAPE PLANTS IN DESIGN

by *Edward C. Martin*  
An annotated photographic guide to the design qualities of ornamental plants and their aesthetic and functional use in landscape designing. Over 600 trees, shrubs, vines, ground covers and turfgrasses are described in nontechnical language. Over 1900 photographs. Provides a basis for selecting the best plant materials for any particular use in landscape design. Contains detailed indexes that provide quick reference to particular design qualities and growing conditions. **\$58.95**

## 375 - RESIDENTIAL LANDSCAPES

by *Gregory M. Pierceall*  
An excellent reference for individuals involved in the design and development of plantings and constructed features for residential sites. Illustrations and actual residential case study examples are used to communicate graphic, planning and design concepts which are the focus of this text. **\$43.00**



## 665 - ARBORICULTURE: THE CARE OF TREES, SHRUBS AND VINES IN THE LANDSCAPE

by *Richard W. Harris*  
Provides comprehensive coverage of complete planting, site analysis, preparation and special planting methods, fully detailed coverage of fertilization, irrigation and pruning guidelines on preventative maintenance, repair and chemical control, how-tos of diagnosing plant problems, practical data on non-infectious disorders, diseases, insects and related pests and pest management. **\$56.00**

## 400 - NATIVE TREES, SHRUBS, AND VINES FOR URBAN AND RURAL AMERICA

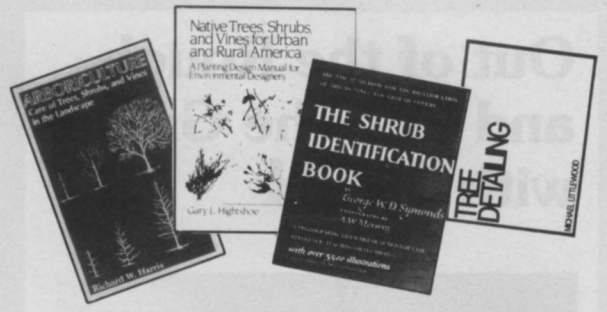
by *Gary L. Hightshoe*  
This award-winning reference to native U.S. plants has now been expanded to include shrubs and vines. Over 250 major species are characterized by form, branching pattern, foliage, flower, fruits, habitat, soil, hardiness, susceptibility, urban tolerance and associate species. Includes unique color-coded keys that classify plant species by visual characteristics, cultural requirements and ecological relationships. **\$79.95**

## 720 - SHRUB IDENTIFICATION

by *George Symonds*  
Pictorial key to identify shrubs. Contains more than 3,500 illustrations to check specimens. Popular and botanical names are given for each shrub and handy index tabs for quick reference. **\$12.95 paperback**

## 750 - TREE IDENTIFICATION

by *George Symonds*  
Pictorial reference to identifying trees by checking leaves, buds, branches, fruit and bark. Like its sister publication, SHRUB IDENTIFICATION, popular and botanical names are listed with index tabs for easy reference. **\$14.95 paperback**



## 755 - TREE DETAILING

by *Michael Littlewood*  
A compendium of practical information on all aspects of tree planting and maintenance. 10 chapters deal with tree stock and sizes, planting techniques, pruning and surgery, protection of new trees and existing trees, maintenance and management, survey and evaluation. **\$32.95**

## 760 - TREE MAINTENANCE

by *Pascal Pirone*  
The fourth edition of this guide for anyone involved in the care and treatment of trees. Special sections on tree abnormalities, diagnosing tree troubles, non-parasitic injuries and assessing the suitability of different trees. **\$49.50**

## 405 - WOODY ORNAMENTALS

by *Partya, Joyner, Rimelspach, Carver*  
Illustrates plant identification characteristics. Organized in two basic sections: plant identification and plant disorders, this text utilizes 430 color photos, 430 line drawings and 45 black and white photos to simplify identification. **\$32.50**



## NEW! Instructional Videos!

**01 - PROFESSIONAL SOD LAYING TECHNIQUES - 25 minutes - Color - VHS - \$85.00**  
"How-to" video featuring step-by-step guidelines for installing sod professionally. Illustrated reference guides and group study materials included.

**02 - PLANTING AND STAKING LANDSCAPE TREES - 20 minutes - Color - VHS - \$85.00**  
Award-winning instructional demonstration video covers the key steps of planting landscape trees. Illustrated reference guides and group study materials included.

**03 - SUCCESS WITH BEDDING PLANTS - 25 minutes - Color - VHS - \$85.00**  
Shares those "tricks of the trade" used by national award-winning professionals. Shows how to select, install and maintain bedding plants successfully. Illustrated reference guides and group training materials included.

**04 - WORKING WITH PESTICIDES - 2 45 minute videos - Color - VHS - \$143.95**  
This video safety course covers Pesticide Labels, In-field Clothing & Equipment, How to Be Prepared for a Spill, Tips on Mixing and Calibrating Pesticides and more.

**05 - PROFESSIONAL TURF MANAGEMENT - 30 minutes - Color - VHS - \$85.00**  
Examines nine major warm and cool season turf varieties. Optimum mowing heights and cutting frequency are given each turf variety. Illustrated reference guides and review test included.

**06 - LANDSCAPE IRRIGATION, Maintenance and Troubleshooting - 30 minutes - Color - VHS - \$85.00**  
Step-by-step instructional video for infield employees covering Sprinkler Heads/Drp Emitters, Electrical/Manual Valves, Backflow Prevention Devices, Controller Operation and more. Illustrated handbook included.

**07 - PLANT PROPAGATION - 2 25 minute videos - Color - VHS - \$85.00 each**  
Volume One covers four important methods of propagation: by seed, division, bulbs and tubers and micropropagation. Volume Two covers three additional techniques of propagation: cuttings, layering and grafting and budding. Study guides included.

**08 - ELEMENTS OF PRUNING - 30 minutes - Color - VHS - \$89.95**  
Available in English or Spanish. Best-selling video developed for entry level industry training presents in-the-field demonstrations of The Techniques of Thinning Out Pruning, How to Control and Direct Plant Growth by Selective Pruning, How to Prevent In-Field Injuries and more. Illustrated reference manual and reproducible group study guides included.

Mail this coupon to: Book Sales, Edgell Communications  
One East First Street, Duluth, MN 55802

Name \_\_\_\_\_

Street Address \_\_\_\_\_

P.O. Box Number \_\_\_\_\_

City/State/Zip \_\_\_\_\_

Phone Number ( ) \_\_\_\_\_

Purchase Order Number \_\_\_\_\_

Signature \_\_\_\_\_ Date \_\_\_\_\_

Please send me the following books. I have enclosed payment\* for the total amount.

Please charge to my Visa, MasterCard or American Express (circle one)

Account Number \_\_\_\_\_ Expiration Date \_\_\_\_\_

BOOK NUMBER AND TITLE	QUANTITY	PRICE	TOTAL PRICE

Domestic—\*Please add \$3.00 per order plus \$1.00 per additional copy for postage and handling.

All others—\*Please add \$5.00 per order and if ordering multiple copies, also add \$2.00 per additional copy to cover postage and handling.

Please allow 6-8 weeks for delivery.

Prices subject to change.

Quantity rates available on request.

Questions? Call 218-723-9471 or 9472

(postage & handling)

Total Enclosed

LM

gines to its ProLine mid-size mowers. The engines are a 14-hp OHV Command and 16-hp Magnum Twin. Both are available with 36-, 44- and 52-inch deck options.

Toro says the Kohler Command 14-hp OHV engine provides extra cutting power for tough mowing applications. It features full pressure lubrication and hydraulic valve lifters for long life. Laminated steel packaging and a large multi-chambered muffler decrease engine noise. An optional electric start kit is available.



The Magnum 16-hp twin cylinder

engine features excellent torque for extra lugging power in tough cutting conditions. More than two acres/hour can be mowed with the 52-inch deck. Other improvements for 1990 include: low profile 5-gallon gas tank; a shorter handle for easier storage and trailering; and a new 4-speed transmission with sealed bearings for longer life.

Circle No. 211 on Reader Inquiry Card

## Out of the Rough and Into the Green with **FINN**.



A winning golf course is one with top-notch landscaping. Finn gets you off to the right start with its line of quality equipment. And after your course is up and running, Finn equipment continues to work year round.

Versatile Finn HydroSeeders™ easily seed everything from roughs to bunkers, the banks of lakes, and along cart paths and roadsides. Our Mulch Spreaders finish the job quickly and inexpensively with their easy operation and efficient distribution of mulch.

Once the course is in operation, HydroSeeders™ are perfect for routine maintenance. Re-seed in spring; water in summer; feed in the fall, and quickly clean up equipment all year.

All Finn equipment features the most comprehensive customer support and after-sale service in the industry. So go with Finn and make your golf course a winner.

**FINN**  
CORPORATION

The Choice of Professionals

For all the facts about Finn's complete line of landscaping, reclamation and erosion control equipment call or write us today. Leasing plans available.

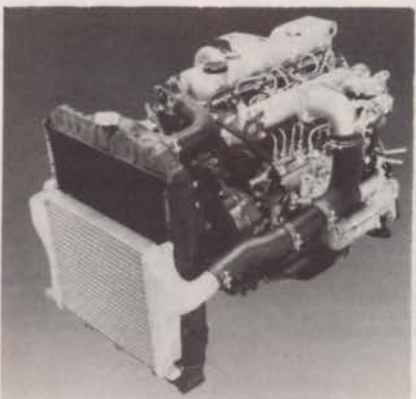
Phone (513) 874-2818

Toll Free (800) 543-7166 • FAX (513) 874-2914

9281 LeSaint Drive, Fairfield, Ohio 45014

## Direct-injection engine powers two truck models

A Mitsubishi 4D31-OAT2 intercooled, turbocharged, direct-injection diesel engine is rated at 127-hp. It powers the



new 11,600 lb. GVW Mitsubishi FUSO Intercooler truck model FE 434, and the 13,500 lb. GVW FE-HD 444. Peak torque of the in-line, four-cylinder engine is 214 lb./ft. at 2000 rpm.

Circle No. 212 on Reader Inquiry Card

## Lower-priced greensmower is packed with features

The John Deere 22R greensmower is propelled by a split drive system with



two aluminum traction rolls. The 22-inch greensmower is powered by a 3.6-hp Kawasaki 4-cycle engine.

A 5-inch-diameter 9-blade reel and 3mm hardened steel bedknife cut to 5/32 inch. An optional 2.5mm tournament bedknife cuts to 1/8 inch.

Circle No. 213 on Reader Inquiry Card

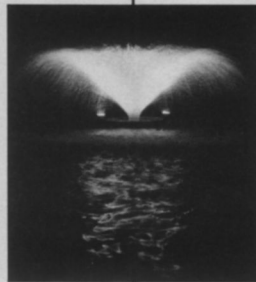
Circle No. 118 on Reader Inquiry Card

# Troubled waters?

## Otterbine Aerators

The prescription for troubled breathing, poor circulation, and changing temperatures in ponds and lakes is practical engineering that is esthetically pleasing.

These aerators range in power, circulating from 600,000 to 20 million gallons of water in a



24-hour

period. Each

complete, turnkey system is delivered fully assembled; no special pumps or foundations are required.

Striking patterns begin with the Starburst, Rocket, Sunburst, Constellation, or Phoenix working alone or mingled together. Add the Otterbine Fountain Glo™ lighting system for spectacular evening display as well as security or the Rock Float Cover for the illusion of natural spray.

Otterbine Aerators meet the water management needs of golf courses, parks, recreational lakes, office developments, and residential condominiums. Call or write for more information:

## Barebo Inc.

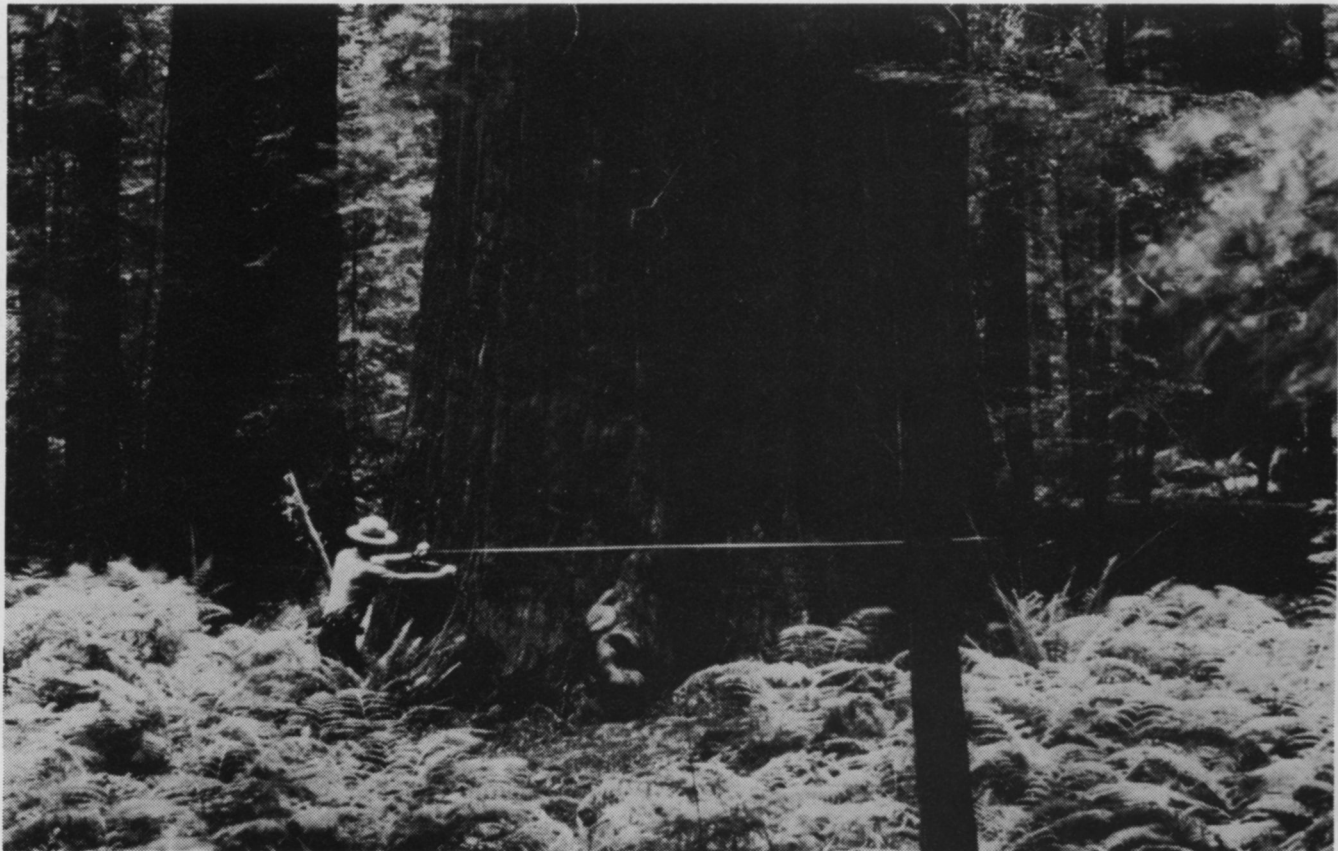
R.D. 2, P.O. Box 217  
Emmaus, PA 18049

215/965-6018



**"See us at GCSAA show,  
Booth No. 3632-35."**

# Recognize America's Living Landmarks



From the towering 275-foot Giant Sequoia in California's Sequoia National Park to the relatively diminutive 20-foot Allegheny Plum in Virginia's Blue Ridge Mountains, America's living landmarks are an invaluable part of our nation's natural heritage.

That's why the American Forestry Association began The National Register of Big Trees in 1940. Today, as then, we encourage citizens across the country to find and recognize the largest tree of each species. With your help and participation, we can locate and protect these

champions for future generations while fostering a deeper appreciation for trees and forests everywhere.

For information on how to measure and nominate a Big Tree, write:  
The National Register of Big Trees,  
American Forestry Association,  
P.O. Box 2000, Dept. BT,  
Washington, DC 20013.

*America's Living Landmarks.  
Their preservation is  
every American's concern.*



GCSAA '90

# ORLANDO

CONFERENCE & SHOW

Join us for the

## 61<sup>st</sup> INTERNATIONAL GOLF COURSE CONFERENCE & SHOW

February 19-26, 1990

Orange County Convention/Civic Center  
Orlando, Florida

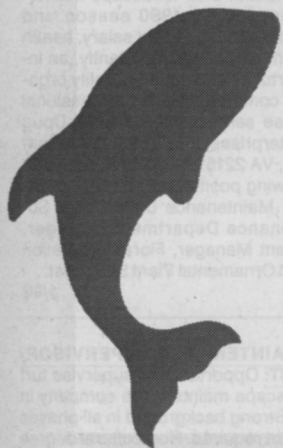
- *TRADE SHOW*
- *GOLF CHAMPIONSHIP*
- *GCSAA ANNUAL MEETING*
- *EDUCATIONAL SEMINARS*

For conference, seminar or exhibitor information:  
800/472-7878 or 913/841-2240

1617 St. Andrews Drive  
Lawrence, Kansas 66047-1707

GOLF COURSE SUPERINTENDENTS  
ASSOCIATION OF AMERICA

Circle No. 120 on Reader Inquiry Card



# CLASSIFIEDS

**RATES:** \$1.20 per word (minimum charge, \$35). Bold face words or words in all capital letters charged at \$1.45 per word. Boxed or display ads: \$100 per column inch-1x (one inch minimum); \$95-3x; \$90-6x; \$85-9x; \$80-12x. (Frequencies based on a calendar year). Agency commissions will be given only when camera-ready art is provided by agency. For ads using blind box number, add \$15 to total cost of ad. Send ad copy with payment to Dawn Nilsen, LANDSCAPE MANAGEMENT, 1 East First Street, Duluth, MN 55802 or call 218-723-9505. Fax Number 218-723-9615.

**BOX NUMBER REPLIES:** Mail box number replies to: LANDSCAPE MANAGEMENT, Classified Ad Department, 1 East First St., Duluth, MN 55802. Please include box number in address.

## BUSINESS OPPORTUNITIES

**CURB MATE - THE MONEY MACHINE:** Patented, electrically driven and self-propelled machine produces beautiful continuous concrete landscape edging. Simplifies the installation of concrete borders between lawns and flower beds, along driveways and sidewalks, etc. Applications for residential and commercial settings, golf courses, etc. Turn \$5,000-\$10,000 equipment purchase into \$50,000-\$100,000 potential annual income. (801)273-3938. 1/90

**LEARN** Professional Landscaping and Gardening at home. Accredited program provides thorough training in all phases of commercial and residential landscaping. Certificate awarded. Free booklet describes program and opportunities in detail. Lifetime Career Schools, Dept. A-415, 2251 Barry Ave., Los Angeles, CA 90064. 9/90

**WANT TO BUY OR SELL A GOLF COURSE?** Exclusively golf course transactions and appraisals. Ask for our catalog. McKay Golf and Country Club Properties, 15485 N. East Street, Lansing, Michigan 48906. Phone (517)484-7726. TF

**CONNECTICUT AND NORTHEAST:** Selling or buying a green industry business? I'm a specialist in your field with over ten years experience and can locate buyers and sellers. Phil Nilsson (203)621-6199. 1/90

## HELP WANTED

**TAKE ADVANTAGE OF THE OFF SEASON!** Remember how it was last spring trying to find the right people. We have foremen, supervisors, managers, irrigators, architects, etc. Let us pre-screen, send you resumes and set up interviews. Call Amigos today (214)634-0500. 3/90

**LANDSCAPE MAINTENANCE - SUPERVISOR:** Opportunity for experienced, highly motivated individual to join an established, award winning landscape company in the San Francisco Bay Area. Send resume in confidence to: Wayne Richards, Cagwin & Dorward, 8001 Binford Road, Novato, CA 94948. 1/90

**PARKS SUPERVISOR** \$32,240-\$45,822 -- Directs & coordinates the work of supervisory level staff which provides care and maint. of all parks, special facilities and public grounds for 1 geographic section of the City. Req. 3 yrs. of mgmt. level exp. with extensive knowledge of park and/or landscape maint., practices and standards. To request application, call (602)262-6277 or write: City of Phoenix, Personnel Dept., 135 N. 2nd Ave., Phx., AZ 85003. AA/EEO/H Employer. 1/90

"Consider all of your employment options in the irrigation and landscape industries. Call **Florapersonnel**, the international employee search firm for the ornamental horticulture industry. Completely confidential. Employer pays fee. **Florapersonnel, Inc.**, P.O. Box 1732, 1450 S. Woodland Blvd., Suite 201, DeLand, FL 32721-1732. (904)738-5151. Jim Bambrick, Jeff Brower, David Shaw, CPC, Bob Zahra, CPC." TF

**CARETAKER COUPLE** Mature, childless couple wanted for caretakers of country estate. Must have strong work ethic, with sense of personal pride in the job. Need good mechanical aptitude, house maintenance skills, and enjoy lawn and flower garden upkeep. Housekeeping and babysitting skills needed. House provided. Excellent benefit package. Salary commensurate with experience. Send resume to: LM Box 474. 2/90

**LANDSCAPE DESIGN/SALES, LANDSCAPE MAINTENANCE:** Leading Kansas City Landscape Company has immediate openings for talented, experienced, and aggressive persons in residential/light commercial design and sales, and in management of residential landscape maintenance. A.S. or B.S. in Horticulture or related fields preferred. Experience, organizational skills and a customer service attitude a plus. Competitive compensation and benefits package. Send a resume with experience and salary history to: HERMES COMPANY, INC., P.O. Box 14336, Lenexa, KS 66215. (913)888-2400. 1/90

H E L P   W A N T E D

## LANDSCAPE SALES MANAGER

*For landscape division  
of Westchester's premier tree care company.  
Unlimited potential. Excellent salary and  
share of profits. Minimum five years  
residential/commercial experience required.*

**GREENER  
LANDSCAPES**

*Address correspondence to:*

**Irving Eskenazi**

Greener Landscapes

300 Adams Street

Bedford Hills, New York 10507

**Irrigation Professionals Needed - Aggressive, fast growing irrigation company is seeking Installation Foreman, Service Technician, and Installers. Excellent wage and benefit package. Send resume to P.O. Box 25125, Lansing, MI 48909. 2/90**

## TREE & SHRUB CARE MANAGER,

Operations - Production Division, Major. Tree & Shrub Care Company (Spraying - Feeding only) seeks take charge person with horticulture management experience. Hands on experience in all aspects preferred, including ornamental spraying, truck and equipment maintenance, personnel management. This dynamic management position has potential to lead to Vice President. **Excellent salary and bonuses.** Position for New Jersey Branch. Confidential.

Contact: Sean Grace,  
Executive Vice President  
516-366-1818

## LANDSCAPE MANAGER

**GREEN THUMB ENTERPRISES, INC.**, a full service commercial landscape contractor based in the Washington DC area is looking to expand its Landscape Maintenance Division in 1990. We currently have openings for 2-3 qualified individuals to serve as area field managers. Individuals must have a minimum of 3-5 years supervisory experience in high quality commercial landscape maintenance. We offer an excellent salary complete with comprehensive benefit package and company vehicle. Send resume complete with salary requirements and references to:

**Green Thumb Enterprises  
2305 Old Ox Road, Suite #A  
Sterling, Virginia 22170  
Attention: Bill DeWitt**

**LANDSCAPE MAINTENANCE SUPERVISORS:** Rapidly expanding landscape maintenance firm seeking experienced, quality individuals to be field/working supervisors. Tremendous opportunity to grow. Full benefits. Contact: Tandem Landscape Company, 33W480 Fabyan Parkway, West Chicago, Illinois 60185, Attn: Glenn Kedzie. TF

**HELP WANTED:** A well established Southern Vermont Landscaping Firm located in one of the East's most popular ski and vacation areas is looking for a highly skilled and experienced individual to oversee our commercial division. Responsibilities will include: Daily co-ordination of crews, basic landscape design and estimating. Good organization as well as strong personality are a must. We are a fast paced company looking to do the job right and we need quality people to make it happen. Please send resume to: Homestead Landscaping & Garden Center, LTD., P.O. Box 125, Bondville, VT 05340-0125. 2/90

**KT ENTERPRISES, INC.**, a commercial landscape management firm servicing the Washington, DC Metropolitan market, is now accepting applications for employment in their landscape maintenance department for the 1990 season and beyond. All positions offer excellent salary, health benefits, retirement and, most importantly, an incomparable opportunity to work in a quality organization that will continue to offer professional satisfaction. Please send resume to: Mr. Doug Sevachko, KT Enterprises, Inc., 7950-1 Woodruff Court, Springfield, VA 22151 if you are interested in any of the following positions: Pruning Department Supervisor, Maintenance Department Supervisor, Maintenance Department Manager, Pruning Department Manager, Floral Installation Manager, Turf and Ornamental Plant Specialist. 1/90

**LANDSCAPE MAINTENANCE SUPERVISOR/TURF SPECIALIST:** Opportunity to supervise turf program for landscape maintenance company in Northern Illinois. Strong background in all phases of turf management required. Horticultural degree and experience preferred. Excellent opportunity with young, aggressive company. Send resume and salary requirements to: Andrew Otting, Scott Byron & Co., Inc., 30088 N. Skokie Highway, Lake Bluff, Illinois 60044. 2/90