

Tines are designed to enter the ground to a depth of 1/4 inch, thus combining the grass efficiently without tearing or damaging the growing grass.



Circle No. 203 on Reader Inquiry Card

Computer aided gardening system is user friendly

"Root Directory" from Garden Tech is a new state of the art computer soft-

ware program designed to make tree and plant selection easier and more correct.

The program features more than 1000 species and varieties of trees and 400 varieties of flowers; pest identification and organic control recommendations; plant care and plant propagation; and flower heights, colors, blooming seasons and types.

Graphic highlights include hyper-texts, hypergraphics and detailed pictures.

"Root Directory" runs on IBM XT, AT, PS/2 and 100 percent compatibles. It requires 512K of memory and a hard disk drive.

Circle No. 204 on Reader Inquiry Card

Riding aerator leads to productive day

The riding core aerator from Ransomes operates with a 54" swath and has a capacity of 60,000 square feet/hour. Its wide, smooth tires and three wheel design distributes weight evenly, minimizing turf marking.

Core spacing is variable from one to six inches, without stopping the machine. A variety of tine diameters are available.

The machine's free-floating tine system helps assure the highest quality aeration. The system cleanly removes cores and allows tight turns during maneuvers. Dual floating aerator heads with exclusive Tine-

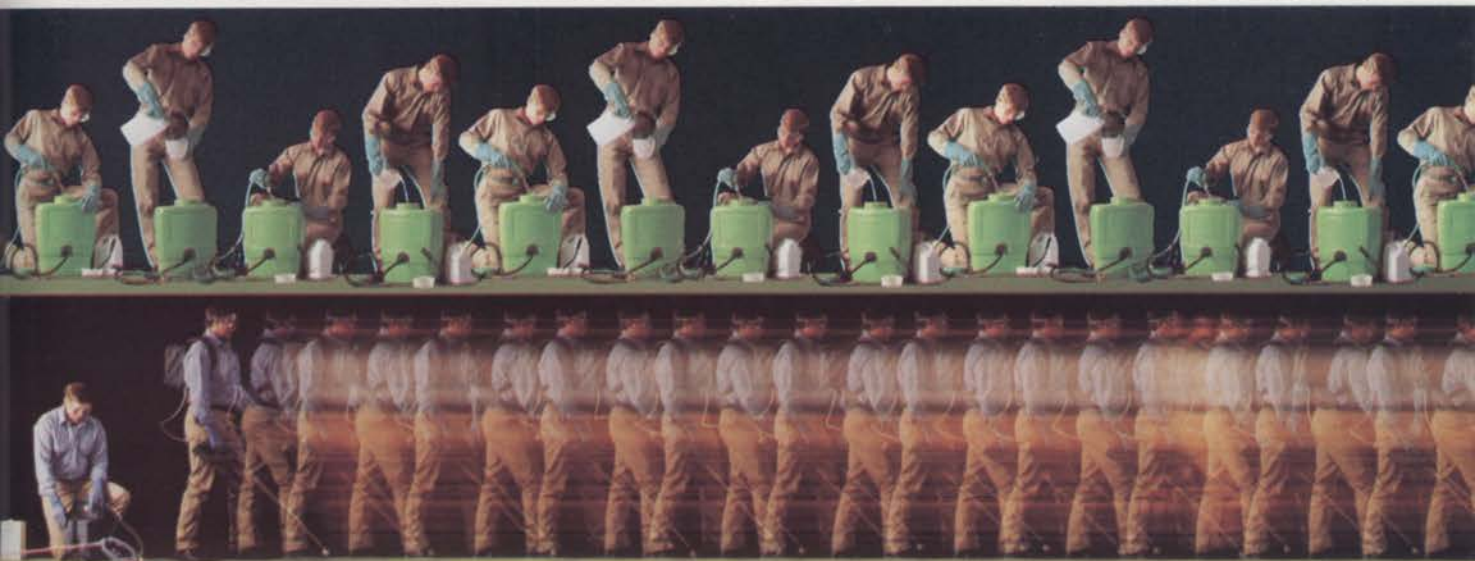


Saver design follow the contours of the turf and help absorb shocks when tines hit obstructions, extending the life of the tines.

Circle No. 205 on Reader Inquiry Card

Planting spot keeps weeds under control

The Poly Planting Spot from Poly Enterprises is designed to keep weeds and other vegetation from growing around your trees and plants.



MORE PRODUCTIVE

Make better time without having to constantly refill.

One 1.3-gallon box of Expedite® herbicide can treat the same area covered by a 3-gallon backpack refilled 15 to 25 times! Expedite is also easy to use — yet precisely accurate.

So you reduce the chances for mixing errors and waste.

Make a change for the better. Contact your local Greens Center or call toll-free: **1-800-323-1421**.

Circle No. 141 on Reader Inquiry Card

EXPEDITE®
THE BETTER WAY TO SPRAY. by Monsanto

ALWAYS READ AND FOLLOW LABEL DIRECTIONS.

Expedite is a registered trademark of, and used under license from, Nomix Plc. © Monsanto Company 1990
EXP-0-101 (1)



Made of a specially formulated cellular vinyl, it looks like rich dirt and will blend into the landscape.

The Planting Spot weighs five pounds, so it won't blow away. Its large size will keep a two-foot area



around your tree clear of vegetation for years, according to Poly Enterprises.

It is economical and maintenance-

free. Uses no chemicals.
Circle No. 206 on Reader Inquiry Card

Commercial edger made for a longer life

Scag Power Equipment makes a commercial edger with a large, milled-edge 10-inch blade for a cleaner cut and longer life. The unique design and engineering of the Scag edger eliminates all springs, sliding booms and other components.



Heavy-duty Fafner agricultural bearings are used. Distance from the tire to the blade is fixed, so the edger can ride on the narrowest of curbs without adjustment.

Circle No. 207 on Reader Inquiry Card

Three edger models to fit every need

Little Wonder, a division of Schiller-Pfeiffer, Inc., makes three models of edgers and a selection of dependable engines to fit a variety of landscaping needs.



All models come with rugged steel frames, a cast iron cutter head with a grease fitting and steel hub wheels.

The edging depth is set by adjusting the front wheel, thereby giving maximum power to the blade at all



MORE PROTECTION

Closed system offers better worker protection.

Expedite® herbicides are premeasured and premixed. So you don't come in direct contact with them. You simply connect the Expedite lance hose to a sealed 1.3-gallon box of herbicide. Then set the lance and you're ready to spray.

Make a change for the better. Contact your local Greens Center or call toll-free: **1-800-323-1421.**

Circle No. 142 on Reader Inquiry Card

 **EXPEDITE**[®]
THE BETTER WAY TO SPRAY. by Monsanto

ALWAYS READ AND FOLLOW LABEL DIRECTIONS.

Expedite is a registered trademark of, and used under license from, Nomix Plc. © Monsanto Company 1990
EXP-0-102 (1)



edging depths.

With the 10-inch hardened tool steel blade, edging is possible up to depths of four inches at a cutting speed of up to 90 feet per minute.

Circle No. 208 on Reader Inquiry Card

Erosion control matting in a variety of widths

Enkamat erosion control matting is now available in a variety of widths up to 15 feet.

The continuous surface of the wider piece eliminates problems occurring at overlap, makes staking easier, and reduces installation time and expense.

Enkamat's three-dimensional



nylon matrix helps grass roots obtain a sound footing, making vegetation almost impervious to damage by heavy waterflow.

Enkamat wide width offers considerable cost and labor savings when used instead of concrete or rip rap for erosion control.

Circle No. 209 on Reader Inquiry Card

Bed liners made to fit Deere transport vehicles

Protect-A-Bed of Hampshire, IL has introduced a high density polyethylene liner that will fit both the John Deere AMT 600 and AMT 622 transport vehicles. The tough, seamless liners come complete with a tailgate liner. Protect-A-Bed says the liner makes loading and unloading easier. Liners install in minutes, and are res-



sistant to sun exposure, acids, gasoline, fertilizers, insecticides, salts and solvents.

Circle No. 210 on Reader Inquiry Card

Heavy-duty leaf bags make clean-up easy

RedMax now makes 30" x 60" premium quality, heavy-duty leaf bags for quick and easy lawn clean up.

The bags are made of dense plastic tough enough to hold twigs, leaves and wet grass, and are available in easy-to-use 10-packs.



Circle No. 213 on Reader Inquiry Card

Sprinkler housing system universal, easy to service

American Irrigation Repair & Supply has developed a two-part, universal sprinkler housing.

The Eagle Universal Housing consists of a base and bell. According to the company, it can be used with any 4-, 8-, or 2-hole sealomatic (SAM) bearing guide Rain Bird sprinkler as



well as some Weathermatic sprinklers.

American says the housing is unique because it allows you to service the sprinkler by detaching the bell and leaving the base and sprinkler in the ground. The bell can be removed by loosening a few screws. The company says you can also change the type of sprinkler while still using the same housing.

The Eagle is made from ultra-high-molecular-weight polyethylene; the base of the unit has stainless steel inserts which prevents the fitting from rust and corrosion.

A soft coated lid for sports field applications and a custom check valve are also available.

Circle No. 212 on Reader Inquiry Card

Sensor device prevents sprinkler system freeze-up

Glen-Hilton Products, Inc. has devel-

All New!

Circle No. 168 on Reader Inquiry Card

Trim your Paperwork Down to Size!

- ✓ Organize your work. . .
- ✓ Build your Business. . .
- ✓ Save Time. . .
- ✓ Reduce Paperwork. . .

with forms and promotional products created especially for Landscape and Garden businesses.

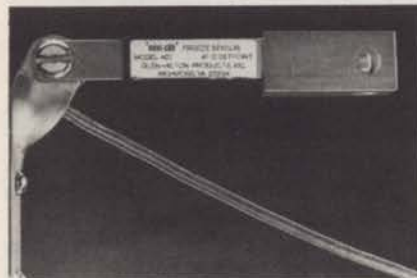
Free brochure and samples!

Call Toll Free 1-800-527-9530

Refer to Sample Pack No. LGAP90-3

The Drawing Board
P.O. Box 620004, Dallas, TX 75262-0004

oped an economical Freeze Sensor to prevent automatic sprinkler systems



from operating during freezing or near-freezing temperatures. The sen-

sor has a heavy-duty aluminum mounting. The sensor accurately measures the temperature, then cuts off the system at the appropriate setting. The system is reactivated when the temperature rises above the setpoint. Backed by a 5-year warranty. **Circle No. 215 on Reader Inquiry Card**

Flexible brushes assist in topdressing greens

The Flex-Brush from Standard Golf is a set of three brushes that attaches to

the cutting units of Toro and Jacobsen greens mowers to brush a swath as wide as each mower's cutting width.

On a light top dressing application, Flex-Brush lets you brush in sand faster than you can mow a green, according to Standard Golf.

It's also an excellent tool for deep tine aeration, when top dressing is needed deep in aeration holes.

The brushes follow the contours



and undulations of all top-dressed surfaces, says Standard Golf, like no dragging method can.

Circle No. 216 on Reader Inquiry Card

You'll See The Difference!



Take The Guesswork Out of Spraying!

Turf Mark®...the professional's way to apply liquid fertilizers and pesticides. Shows you *exactly* where you've sprayed. Helps eliminate skips and overlaps, saving time and money. Makes liquid solution applications virtually foolproof. Turf Mark mixes completely with water soluble pesticides and fertilizers. Won't permanently stain hands, clothing or equipment.

**TURF
MARK**



Restore Fresh Color To Faded Mulch!

Mulch Magic™...the inexpensive alternative to replacing faded fibrous mulch products. Economically restores a bright, vibrant color to existing mulch in minutes. So easy to use and handle. Covers herbicide stains, and colors unsightly trash and residue, too! It's water soluble. Mulch Magic is non-toxic and it's safe to use around plants, shrubs, flowers and trees.

**MULCH
MAGIC**

For more information, contact your distributor. Or call us today toll-free!



Becker-Underwood, Inc.
701 Dayton Avenue • Ames, Iowa 50010
Toll Free: 1-800-232-5907

Circle No. 104 on Reader Inquiry Card

New soil moisture control for landscape irrigation

Irrrometer Company has introduced a new soil moisture control system for automatic landscape irrigation systems. Based on the company's patented Watermark soil moisture sensor, the Watermark Four Zone Moisture Control panel interfaces with any standard 24 VAC irrigation controller.

Featuring the no-maintenance Watermark soil moisture sensor, the new system allows an irrigator to divide the valves on a controller into as many as four "zones," representing various irrigation needs, such as turf versus shrubs, full sun versus shade and top of a slope versus toe of a slope. Each "irrigation need" zone then has its own moisture sensing station, which in turn controls the valves which irrigate that "irrigation need zone."

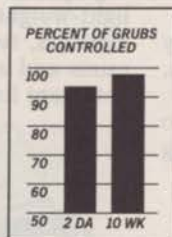
Each zone can be independently adjusted and fine tuned at the panel for desired moisture level. The panel also features a by-pass switch for manual override of the sensor control **Circle No. 217 on Reader Inquiry Card**

Newest flail cutting head for rough weeds

The Micro-Mower company now makes a new flail cutting head for both the MP92.5T and MP135T arm mower.

The new flail head, called the FL40, is a high-speed head with the unique capability of doing rough

When it comes to grubs, it's not enough just to suppress them.



Compiled from 18 university trials, 1985-86.

You want to squash them. Pulverize them. Grind them into dust. Send the little buggers to the root zone eternal.

And who could blame you?

After all, this one creature has probably baffled more turf professionals, made a mockery of more chemical company claims, than all other turf

insects combined.

Triumph® is changing all that.

Unlike most insecticides, which are unpredictable at best, Triumph has been proven in over ten years of testing

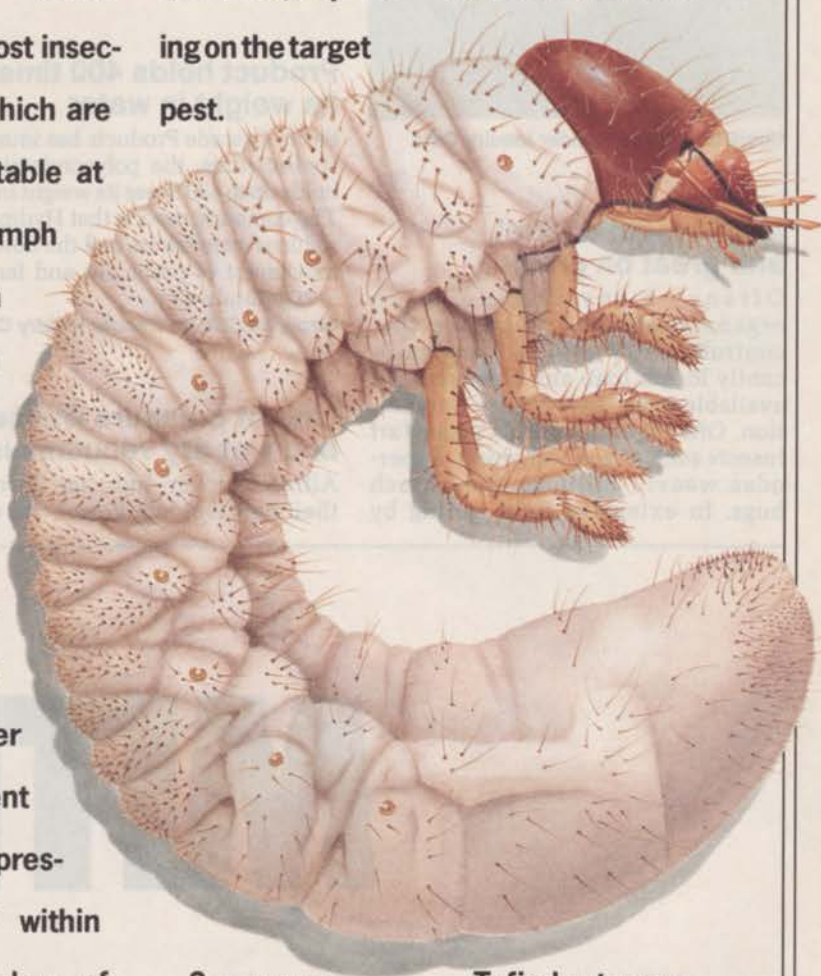
to consistently rid turf of over 90 percent of grubs present. And within just 2-3 days of application.

Better yet, once applied to the soil,

Triumph keeps on working for up to 10 weeks, depending on the target pest.

grub damage.

And protect you from losing what profits you have made to callbacks.



So one preventive application in late summer or early fall is all that's needed to protect turf from costly

To find out more, contact your turf products distributor or Ciba-Geigy representative.

TRIUMPH

HOW TO SQUASH A GRUB.

© 1990 CIBA-GEIGY Corporation, Turf and Ornamental Products, Box 18300, Greensboro, NC 27419. Always read and follow label directions. For retail sale to and use only by certified applicators or persons under their direct supervision, and only for those uses covered by the applicator certification.

weed cutting work as well as the fine finish cut expected of small flail mowers.

By changing the shielding and rotation of the rotor, the operator can match his machine to the cutting conditions.



Circle No. 218 on Reader Inquiry Card

Multi-insect control, and great on grubs

Oftanol 2 insecticide is an organophosphate insecticide that controls white grub larvae significantly longer than any other product available today, says Mobay Corporation. Oftanol also controls major turf insects such as sod webworm, hyperodes weevil, billbugs and chinch bugs. In extensive field testing by

Mobay Corporation and university researchers, Oftanol demonstrated outstanding efficacy and consistency.

Mobay says Oftanol 2 provides significantly longer grub control than any other product available today.

It will not leach out during heavy rains and does not tie-up in thatch, according to Mobay.

Check calibration periodically to ensure that equipment is working properly.

Circle No. 219 on Reader Inquiry Card

Product holds 400 times its weight in water

Sierra Cascade Products has introduced HydroSource, the polyacrylamide that holds up to 400 times its weight in water. The company reports that HydroSource reduces water stress and the downward movement of pesticides and fertilizers into groundwater.

Circle No. 220 on Reader Inquiry Card

Line of pressure washers and wet dry vacuums is out

Alfred Karcher, Inc., has introduced their new Outdoor Power line of high

pressure washers and wet-dry vacuums to power equipment dealers.

Karcher's product line includes three gasoline-powered commercial high-pressure washers, two electric light-weight consumer high-pressure washers, two electric wet-dry vacuums and a complete accessory and detergent line.



Circle No. 229 on Reader Inquiry Card

Engine maintenance meter monitors engine wear

The Sipap Maintenance Meter is a new digital readout power meter from Sipap Electronics, Inc., which serves as a preventive maintenance device designed to record the true running time of any gasoline engine.

MITE.

HOW TO
SQUASH A GRUB



"Periodic preventative maintenance is not generally thought of," says Herb Ley, president and founder of Sipap. "Before our meter was developed, there was no readily available way for people to know when service was required. This product helps users better maintain



their equipment and also promotes dealer service."

The 2-oz. meter attaches to any flat surface with double stick tape. A wire

extending from the unit wraps around a spark plug wire to form a conductive pickup which turns the meter on and off.

The meter, however, does not run off the engine. An internal, high-capacity lithium battery powers the meter, which records up to 5,000 running hours of any two- or four-cycle single- or multi-cylinder gasoline engine.

Circle No. 222 on Reader Inquiry Card

Bark renewer concentrate restores and revitalizes

Standard Tar Products Co., Inc. of Milwaukee has introduced Bark Renewer concentrate to compliment their ready-to-use brand.

Bark Renewer revitalizes decorative wood chips and bark, and is designed to restore vibrant like-new colors and prevent color loss and graying due to exposure from sunlight, wind and rain.

Moisture Guard barriers keep water from soaking into the chips or bark and causing rot.

Bark Renewer is available in the ready-to-use form or concentrate. Three colors are available: honey,

California redwood and walnut brown.

Available in one gallon, five gallon or 55 gallon containers.

Circle No. 223 on Reader Inquiry Card

Walk-along trencher has hydrostatic ground drive

Ditch Witch has introduced the Model 1620, a 16-hp walk-along trencher that features a hydrostatic ground drive and mechanical digging chain drive system.

The Company says the 1620 digs to



depths of four feet, at widths from 3 1/4 to 12 inches with optional pivot.

Its power and trenching depth capability make the 1620 ideally suited
continued on page 100

MIGHTIER.

NEW LIQUID FORMULATION!

In the battle for healthy ornamentals, only the strong emerge victorious. And the weak fall by the wayside.

Introducing new flowable MORESTAN® 4 Ornamental Miticide.

With MORESTAN, you get the strength you need to defeat even the worst mite infestations, the type of infestation that can devastate an entire



ornamental crop. Superior performance in a water-based liquid formulation, free of solvents that can cause phytotoxicity. With proven knock-down power, strong ovicidal activity and excellent residual control.

MORESTAN. For the power to control the mightiest of mite problems.

Mobay Corporation
A Bayer USA INC. COMPANY



Specialty Products Group
Box 4913, Kansas City, MO 64120

Morestan is a Reg. TM of Bayer AG, Germany. ©1989 Mobay Corp. 67431

Circle No. 133 on Reader Inquiry Card

APRIL 1990/LANDSCAPE MANAGEMENT 99

PRODUCTS from page 99

for utility line installation and repair.

Controls for the 1620 are color-coded to match the color-coded instruction/operation decals at the operator's station. All controls are grouped together within easy reach of the operator.

According to the manufacturer, advanced-design construction and components enable the 1620 to be operated with very little daily servicing, and also make it an exceptionally reliable trencher.

The 1620's drive wheels can be steered while trenching, allowing maneuverability when trenching around obstructions.

A Ditch Witch rotational horizontal boring unit can be mounted on the unit for added versatility.

Circle No. 224 on Reader Inquiry Card

Tree spade features eight field adjustable blades

A Stocker 85-inch low profile tree spade offers special advantages for use when digging, transporting and transplanting large diameter trees, according to Treespades America, Inc. of Minneapolis.

The spade has eight narrow blades to produce a solid, undisturbed root ball assuring maximum tree survivability. Each blade can be adjusted in minutes on-site to maintain tight blade alignment, preventing loss of soil and/or gravel from the spade during transport.

The spade also digs a perfectly round hole, eliminating the need to align the spade to match the contour of the receiving hole when planting.

Each blade is powered by a patented gear rack drive, eliminating the need for hydraulic towers above the spade module. Treespades America says this allows transplanting trees close to buildings, walls and other structures.

It digs a half-round root ball, 54-inches deep, which can be rotated in receiving holes to quickly plant trees plumb, especially on slopes and berms. A twin piston side tilt device eliminates outriggers.

Circle No. 225 on Reader Inquiry Card

Grids control erosion, keep paths protected

The Grid System from Chempath, Inc. of Oostburg, WI, is an easy-to-install,

interlocking protective surface to control erosion or maintain the beauty of cart paths or other highly used areas.

Grass grows through the Grid System, crowns and rhizomes are protected, and there is no interference with rhizome or stolon growth. Pieces are 2 x 2 1/2 feet in size, and easily cut to fit around sprinkler heads and sidewalks.

Chempath says the grids have many applications for the landscape industry, including use for trellises, terracing, sidewalks and paths to secure plantings.

Circle No. 226 on Reader Inquiry Card

Lightweight fairway mower causes less compaction

The Jacobsen LF-100 cuts a 100-inch swath at a 6-mph maximum speed.

Its 22" hydraulically-powered reels and a positive down pressure system mean a beautiful finish to turf, with less than 10-psi for less compaction.

Jacobsen says the LF-100 is designed for low maintenance and easy service. Its powerful, fuel efficient diesel engine has a proven record of durability and dependability. Quieter, too, thanks to a new muffler and larger air cleaner.

The LF-100 is available in a 2- or 4-wheel drive, and is the only fairway mower available with Jacobsen's Turf Groomer Fairway conditioner for healthier, stronger turf.

Circle No. 227 on Reader Inquiry Card

Top-ranked rye now available in blend

Garfield Williamson, Inc. reports that Saturn, ranked number one in the USDA's National Perennial Ryegrass Test is now being blended into its popular Proform Triple Classic Turf Rye Blend.

Garfield Williamson reports that Saturn is noted for its seedling vigor, genetic color, winter color and resistance to diseases such as blotch and brown patch.

Saturn is described as a very fine-leaved, low-growing variety which tolerates mowing as close as 3/8-inch.

Triple Classic Turf Rye is a result of three top-ranked premium varieties: Saturn, Omega II and Manhattan II or Competitor perennial ryegrass.

Triple Classic Turf Rye was developed exclusively by Proform research.

Circle No. 228 on Reader Inquiry Card

SIMPLIFY YOUR PRUNING!

MAIBO

**The Fastest, Lightest,
and Strongest Tree Trimming
Equipment in the World**

MAIBO, INC. MANUFACTURERS
Rt. 1, East Stone Drive
Kingsport, Tennessee 37660

1-800-331-2306

California

1-800-543-8694



Mod. LC-200

**FINANCING AVAILABLE
DEALERSHIPS AVAILABLE**

COMPLETE SYSTEMS START AT \$99900

**Our Two Year Warranty Only
Applies When Sold By Our
Authorized Distributors.**

International Patent



Mod. XT-04-E

Circle No. 128 on Reader Inquiry Card