



**THIS JULY 4th,
CELEBRATE
YOUR FREEDOM
FROM
CRABGRASS!**

Acclaim® to the rescue.

Why battle crabgrass all season long? Now you can apply one rescue treatment in late June or early July—and get rid of crabgrass for good. The treatment? Acclaim® IEC Herbicide—the first truly effective postemergence herbicide for crabgrass and other grassy weeds in cool season turfgrasses.

Acclaim for show-off turf.

Acclaim kills crabgrass much more effectively than

the old postemergence arsenates—and it's a lot easier on turf. Even better, Acclaim generally requires only one treatment versus two or three arsenate treatments. Also, Acclaim allows you the flexibility to reseed within 24 hours—so by the time the crabgrass is gone, all you see is lush, beautiful turf.



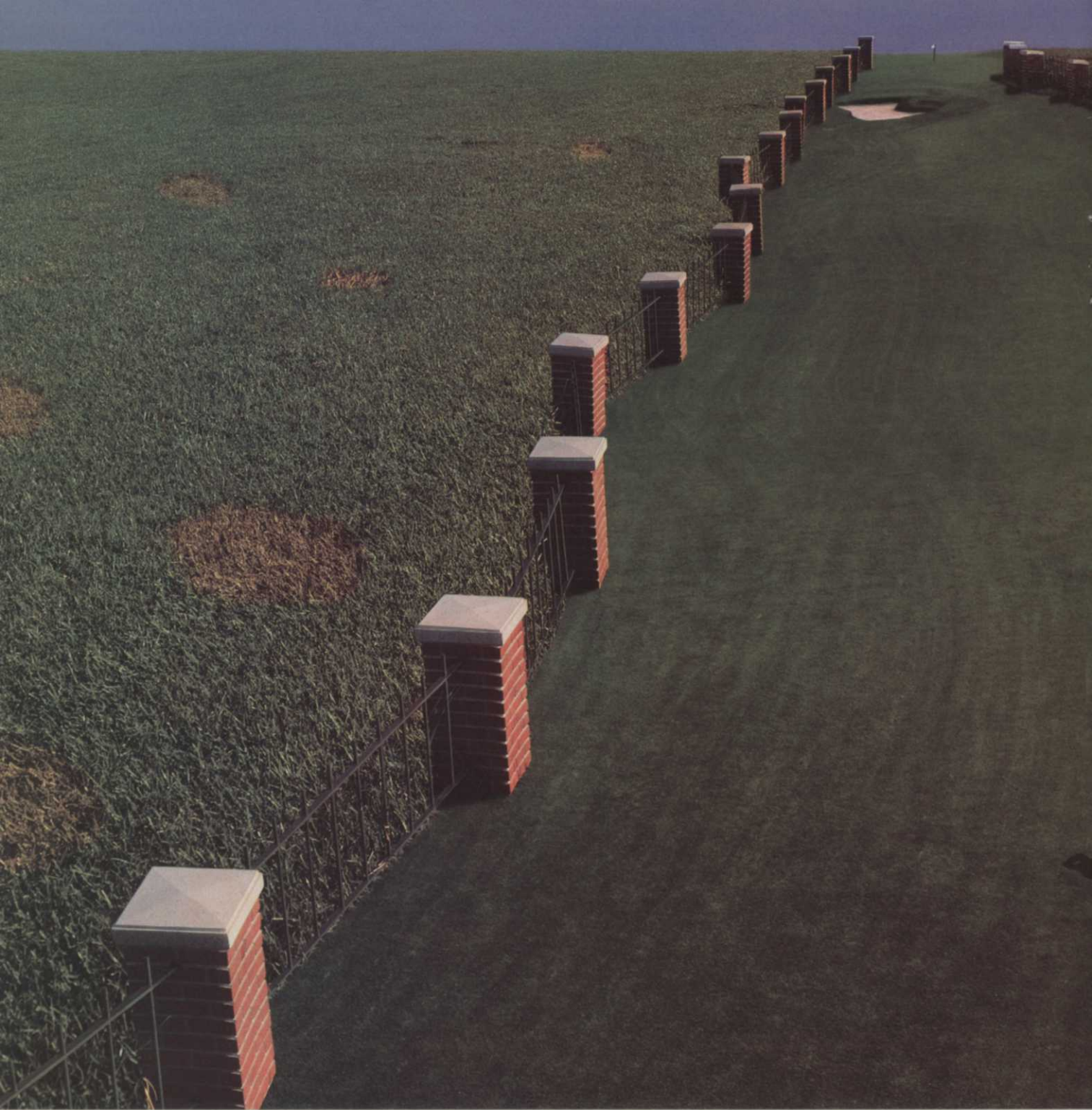
Read and follow label directions carefully. Acclaim and the name and logo HOECHST are registered trademarks of Hoechst AG. The name and logo ROUSSEL are registered trademarks of Roussel Uclaf S.A.

Hoechst
Roussel

ACCLAIM®
Because your turf is always on display.

Circle No. 119 on Reader Inquiry Card

MAY 1988/LANDSCAPE MANAGEMENT 31



Keep your fairways looking great.

ACCLAIM® is a selective herbicide for use on golf courses and other grass areas. It controls weeds and grasses without harming your grass.

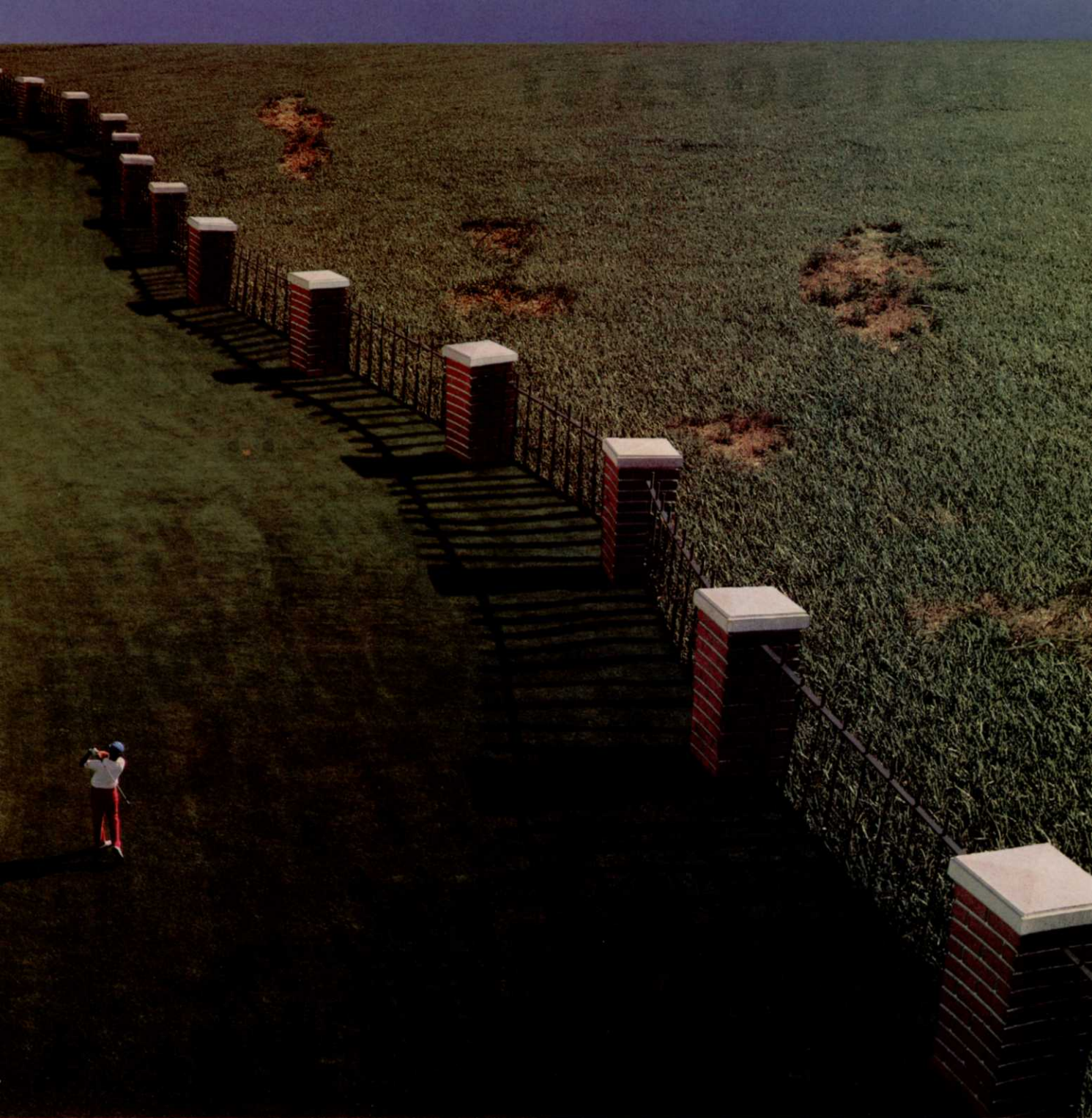


ACCLAIM® is a selective herbicide for use on golf courses and other grass areas. It controls weeds and grasses without harming your grass. Acclaim for show-off turf. Acclaim kills weeds much more effectively than

44061

Because your turf is always on display.

Circle No. 118 on Reader Inquiry Card



Golfers love to play on beautiful fairways. It's that simple. Which is why it's so important to keep your course in top shape. That means controlling diseases like dollar spot and anthracnose. And that means a program using BAYLETON® fungicide.

BAYLETON is taking care of more and more beautiful fairways because more superintendents are discovering

how long it lasts. How much they save in application costs by making fewer applications. And how good it makes them and their fairways look.

BAYLETON. Because golfers play favorites. Specialty Products Group, Box 4913, Kansas City, MO 64120.

Bayleton

Mobay Corporation
A Bayer USA INC. COMPANY



BAYLETON is a Reg. TM of Bayer AG, Germany.

Circle No. 130 on Reader Inquiry Card

NOT SO FAST

Opinions on green speeds vary as much as the management practices themselves. In the following, a few superintendents reflect on the trials and tribulations of managing greens in the face of pressure from players.

by Jeff Sobul, associate editor



Superintendent Mike Phillips (standing) and assistant Carl Rygg use a stimpmeter to check green speeds at The Links at Spanish Bay, the only fine fescue putting surfaces in the U.S. They cut the greens at an uncommonly high $\frac{5}{32}$ of an inch.

Recent trends have sent golf course greens cutting heights down and green speeds up. But somewhere along the way, some people forgot about that little fellow, the grass plant.

Tired of being walked all over, the little green (and sometimes brown) plant started retaliating at the players who wanted those lightning speeds. Unfortunately, the superintendent was pretty much the recipient of abuse from plants and players alike.

The lower you cut turf, the more susceptible it is to disease and stress. Then, by reducing fertilization—as some courses did to improve speed—the plant is denied nutrients needed to sustain healthy growth.

Jim Hippely, superintendent at Salem (Ohio) Golf Club, provides a good example of what many supers face. “We mow at $\frac{1}{8}$ of an inch because the membership requests it,” he says. That, he adds, results in many sleepless nights.

Another Ohioan, John Spodnik at Westfield Country Club, finds himself in a similar situation. He also mows his greens at $\frac{1}{8}$ of an inch at member request. “The ‘hot 100’—June, July and August—puts a strain on the grass,” he notes. “Needless to say, the turf manager must perform accordingly at his best. Sometimes that is not good enough!”

Are superintendents being forced to worship the almighty stimpmeter? Or are they finding ways to keep the faith without offering sacrificial turfgrass?

Scott Niven at the Stanwich Club in Greenwich, Conn., seems to have found some middle ground. “We used to cut at $\frac{1}{8}$ of an inch, nine cuts a week,” he notes. “Greens were fast but deteriorated in quality. Values in excess of 10 on the stimpmeter were too fast to be fair on greens with slopes like mine.

“Now we cut at $\frac{9}{64}$ of an inch. Greens are a bit slower (8.5-9.5),” he says, “but healthier, better looking and easier to manage.”

Sometimes it's situational, with speeds and height varying according to the time of year or occasion. Such is

STAY AHEAD OF THE GAME.

The Jacobsen 7-Gang Hydraulic Ranger's high-production, tournament quality cut puts you acres ahead of the game and your golfers.

Get ahead, and stay ahead, with the 15' cutting swath of this rugged, hard-working pull behind. It cuts nearly 40% more grass than a 5-gang, yet it's every bit as maneuverable. And hydraulic-reel drive delivers a quality cut, even through heavy, wet grass or morning dew.

Plus, the Ranger leaves a good impression on your golfers instead of your turf. Its compact size and wide, high-flotation turf tires produce a lighter footprint than competitors—less than 10 PSI ground pressure. Team-up the Ranger with the Jacobsen G-20D turf tractor and you've got a high-production mowing system that's right at home on fairways, roughs, parks or schoolgrounds.

Any 42 PTO hp tractor can pull the Ranger, because it has a completely self-contained hydraulic system. The hydraulic pump mounts directly to

the tractor PTO so you can turn tighter, without any PTO universal joints to get in the way or damage. And fast, simple hookup/disconnect frees up your tractor for other chores.

Easy-reach, up-front electrical solenoid switches start and stop the reels, and provide reverse rotation for backlapping or high-production vertical mowing. Hydraulic lift levers let you mow with three, five, six or all seven reels, for cutting widths from 84" to 184". Choose 6- or 10-blade, fixed or floating reels to match your needs.

So stay ahead of the game. See your Jacobsen distributor for full details and a free demonstration. Attractive lease and finance plans available. Or for more information contact: Jacobsen Division of Textron Inc., Racine, WI 53404.



A powerful 5-Gang Hydraulic Ranger with a 133" cutting swath is also available.

JACOBSEN
TEXTRON

Jacobsen Division of Textron Inc.
© Jacobsen Division of Textron Inc. 1988

Circle No. 122 on Reader Inquiry Card



J-2-B



Golf course architect Mike Hurdzan incorporates knowledge of golf design history into his present designs matching green slope to putting speed and skill.



The Stanwich Club members sacrificed a little speed so that Scott Niven could adjust management techniques to keep greens healthier and playing more honestly.

the case at the prestigious Greenbrier in White Sulphur Springs, W.Va.

In the past, executive director of golf and grounds Robert Mitchell has had speeds as high as 12 to 13 on the stimpmeter for the 1979 Ryder Cup matches. For other tournaments, Mitchell keeps greens at around 9.5.

Otherwise, he says, "my opinion is that the guests who come to play the Greenbrier enjoy our courses with a putting speed of 8.5. Thus, I try to keep speeds between eight and nine on our three 18-hole courses."

That means a swing away from scalping. Mitchell believes a 1/8-inch cutting height is too low for bentgrass/poa greens in his region.

"I prefer verticutting, top dressing, judicious use of fertilizer and chemicals, and even double cutting," he explains.

Also, recent technological advancements are making their way onto the market. That will improve speed and texture without lowering cutting height. Most notable are the turf groomers.

Jacobson's Turf Groomer was the first to enter the market and was followed shortly thereafter by Toro's Grooming Reel and Lesco's groomer. Since these are pretty new to the market, their collective effect is yet to be felt.

Variables

Most superintendents will continue to use existing equipment and techniques to manage greens.

Chuck Clark of The Broadmoor in

Colorado Springs, notes, however, that adjustments are a constant necessity. Weather conditions, he says, can change stimp readings from morning to afternoon. "When weather conditions don't cooperate, speeds which may begin the day at around nine may end up at 11 before the day is over."

To help keep his greens (and himself) out of stress during uncooperative weather, he has added a syringing system around all the greens to help preserve them with little inconvenience to the golfer.

Good intentions

The original intent of the stimpmeter



Superintendent Robert Mitchell integrates several management techniques to keep green speeds constant and turf healthy for guests at The Greenbrier.

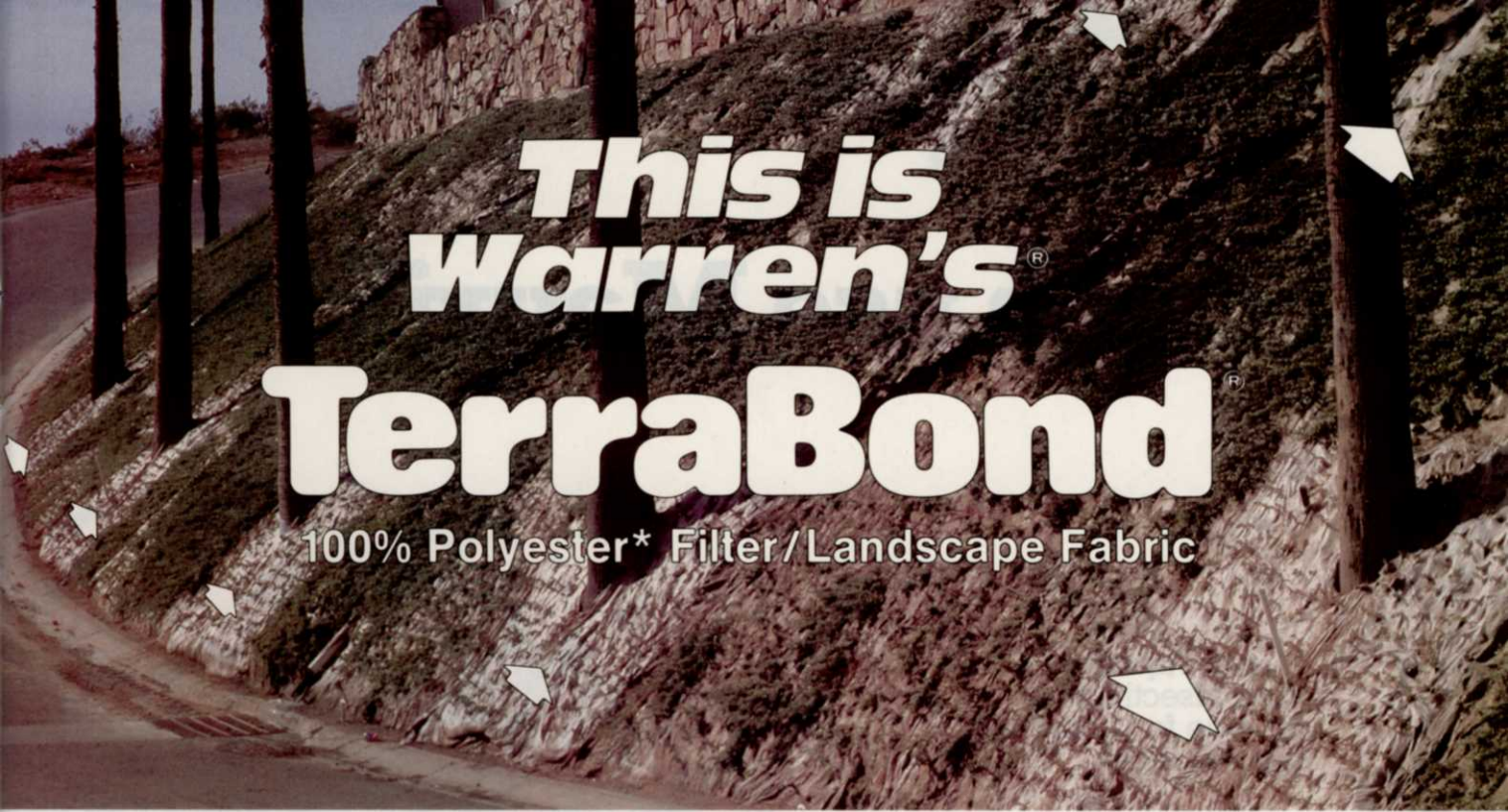
was to determine consistency of green speed from one green to the next and act accordingly to keep them consistent, thereby introducing skill into holing a putt.

Golf course architect Mike Hurdzan, Ph.D., would like to see skill returned to putting. He finds it ridiculous that the best players in the world would three- and four-putt from 10 or 12 feet, as they did at the 1982 Masters—the year Augusta switched to bentgrass "on slopes designed for Bermuda," he says. "Putting became luck, not skill." Hurdzan points out that Alister MacKenzie designed Augusta's green contours with Bermudagrass in mind.

"The point is," Hurdzan believes, "if putting is to be a skillful pursuit, then speed and slope must be matched."

Accomplishing this will take some time. Some help from the PGA and its members would be a good start. Playing pros are the most visible and influential people at pointing the way, as they did with higher speeds. They can do the same by moving back toward Hurdzan's three S's: speed, slope and skill; and a return to proper stimp-meter use.

"The stimpmeter can be a useful tool only when everyone has been properly educated to its intended use and an agreement has been struck as to how it will effect our management practices," The Broadmoor's Clark concludes. "It won't be the pro or the club manager who will be moving on when the greens die." **LM**



This is Warren's® TerraBond®

100% Polyester* Filter/Landscape Fabric

TerraBond® solved this tough erosion control problem in Phoenix . . . and helped enhance the natural beauty of the site at a fraction of the cost of concrete and stone. The ground cover is creeping over and rooting through the TerraBond down into the soil below. After 9 months in the desert sun and heat, the TerraBond is still in perfect condition (other materials would have disintegrated).

**Put America's No. 1 geo-fabric to work for you . . .
it's the only engineered, quality-controlled
filter/landscape fabric that's designed not to fail.**

TerraBond®, the **proven** leader in geotextile filter/landscape fabrics, is manufactured in the most modern factory of its kind in the U.S. . . . by people who care about creating a product you can rely on to do its job continuously, without fail.

- It's **polyester** (not polypropylene) . . . with high UV and chemical resistance to assure long life **on or in** the ground.
- It's **soft and pliable** . . . easy to handle and install . . . molds itself to the soil under rock and riprap, which is vital for successful long-term erosion control.
- It's **strong and tough** . . . stays intact during the rigors of construction . . . **remains** strong and tough years after installation because it's polyester, (not less durable polypropylene).
- It's **uniform in density** . . . to assure positive,

uniform filtration and separation of soils, ground, sand, mulch, etc.

- **Plus its fibers are mechanically bonded by needle-punching** (not glued or melted together) . . . this manufacturing process permits positive flow-through of fines while retaining larger soil particles which would otherwise clog your drains.

Shouldn't you be using the PROFESSIONAL fabric that's proven Number 1? It virtually ends costly rework and nuisance callbacks.

Whether your application is mulch and weed control, subsurface drainage, retaining wall linings, erosion control, gravel paths, brick or paving-stone patios, or planter separation, use the one filter/landscape fabric on the market proven not to fail: **Warren's TerraBond.**

*Made from Trevira® (reg. TM of Hoechst AG)

"It always costs less to put in the best."

Warren's®

TURF PROFESSIONALS

Corporate Offices: Crystal Lake, Illinois 60014

TerraBond is now available anywhere in the U.S. Call us for the name of the stocking dealer nearest you.

Call 1-800-828-TURF (8873) In California call: 1-800-828-8882.

For specific product information contact Warren's Seed & Special Products Division, P.O. Box 459, Suisun City, CA 94585.

Circle No. 146 on Reader Inquiry Card

MAY 1988/LANDSCAPE MANAGEMENT 37

You can use Mavrik Aqua

Mavrik Aquaflow is the ideal insecticide/miticide for landscape maintenance.

It is a **non-restricted product** that is highly effective against the majority of insect and mite problems.

There are **no phytotoxicity** problems. Mavrik® has been proven safe for hundreds of plant species, even when sprayed right on the blooms.



MANAGEMENT LANDSCAPE LAWNGRASSES

flow[®] all over this page.



Mavrik is also **concentrated**. So you have less to buy, carry around, or store. It's safe to use and Mavrik **leaves no odor** and **little visible residue**.

When you have insect and mite pests, hit them with Mavrik Aquaflow. And it'll be all over for them.

See your distributor today.



SANDOZ
CROP PROTECTION
CORPORATION

DES PLAINES, IL 60018

Use pesticides effectively. Read and follow label directions carefully.
© 1987 Sandoz Crop Protection Corporation
Mavrik is a registered trademark of Sandoz, Ltd.

Circle No. 139 on Reader Inquiry Card



LAWNGRASSES

Confused about which new turf varieties will work best for home lawns? The executive director of The Better Lawn and Turf Institute tells what to look for in choosing good grass.

by Eliot C. Roberts, Ph.D., The Lawn Institute

The new generation of improved lawngrasses is well recognized for helping lower maintenance costs and increase quality and persistence of the turf throughout cool, humid regions of the country.

Grasses bred to have darker green foliage are not likely to be over-fertilized in an attempt to improve color. So turf is maintained without stimulation leading to excess growth. This only weakens the grass and requires more frequent mowing. Savings on fertilizer costs can be significant.

New grasses developed for disease resistance are far superior to common types. Since disease conditions come and go, the task of chemical control is difficult and costly. Use of blends and mixtures of lawngrasses with improved resistance to one or more of the several common fungus pathogens builds hardiness and added beauty into a lawn. It also saves money.

Cultivars are now available with greatly increased insect resistance. Some even contain endophytes. These organisms live within lawngrass plants without harming the grass in any way. They cause the turf to be undesirable for insect infestation.

These types of biological insect control are permanent with the establishment of the sod. They may well eliminate or at least greatly reduce the need for some insecticides. Improvements of this type are meaningful in our attempt to reduce pollution and improve environmental quality.

Weeds cannot get a seedling start in a turf that has formed a good, dense stand and maintains that stand through the growing season. The new proprietary named grasses that have

been selected and bred for this kind of growth habit and vigor are the first line of defense against weeds.

Sod produced from these grasses is like "money in the bank" when it comes to savings on the cost of herbicides for lawn maintenance.

The Lawn Institute supports a Variety Review Board to evaluate the relative performance of new varieties of lawngrass marketed throughout

the United States and Canada. Each year, 40 to 50 of the best cultivars are selected for special recognition. With some 300 cultivars under evaluation in the United States and Canada, there is a wealth of superior germ plasm available.

Consumer interest in new grasses is taken into consideration. As turf-type perennial ryegrasses and tall fescues have become more popular, in-



Use of blends adds beauty to a lawn.