

# ARSENAL® TREATS EACH MEMBER OF THE ENVIRONMENT AS IF IT WERE THE LAST.

Too often in the past, inhabitants of the environment had to become endangered before they were protected. But we can all do our part so similar mistakes don't occur in the future. One way is by using a herbicide that doesn't harm the environment. ARSENAL® herbicide. Its advanced chemistry eliminates what you want it to. And nothing more.

## WHY ARSENAL IS EASY ON THE ENVIRONMENT.

Because of its unique mode of action, ARSENAL, when used as directed, has no harmful side effects on mammals, fish, bees, birds or earthworms. Because ARSENAL is non-volatile and doesn't move laterally through the soil, off-target vegetation is unaffected. ARSENAL is nonflammable. Its unique chemical activity causes a slow "brown-out" in foliage, so it poses little fire hazard. Unlike tank mixes, ARSENAL introduces only one biodegradable product into the environment. And it's applied only once during a season, resulting in a lower chemical burden and a reduction in "touch-up" treatments.

## CONTROLS MORE UNDESIRABLE VEGETATION.

ARSENAL has demonstrated control of a broad spectrum of weeds, vines and brush species. Tests in southern states showed that ARSENAL alone (at a rate of two quarts per acre) out-performed several tank mixes for annual and perennial weed control. Even more impressive, ARSENAL was most effective on difficult species like Johnsongrass, trumpet creeper, kudzu and red maple.

## ONE APPLICATION GIVES SEASON-LONG CONTROL.

ARSENAL gives you full-season control for up to eight months in temperate climates. It fits your spray schedule,

Always read and follow label directions carefully.

## TOUGH ON WEEDS. EASY ON THE ENVIRONMENT.

because it can be applied at any time during the growing season. ARSENAL controls not only existing vegetation, but also new weeds that germinate after application. So you get residual control for the rest of the season. On hard-to-kill vegetation, ARSENAL keeps working on the roots until complete control is achieved. In spray solution, ARSENAL is stable for several days. That means no waste due to decomposition, and no chance of under-dosing target vegetation.

ARSENAL offers broad-spectrum control, including these tough species:

Johnsongrass	Dallas grass
Trumpet creeper	Bindweed
Poison ivy	Canada thistle
Greenbriar	Foxtails
Redvine	Red maple
Kochia	Kudzu
Multiflora rose	Sumac

## DUAL ACTION CONTROLS WEEDS IN A WHOLE NEW WAY.

Unlike many other herbicides, ARSENAL is absorbed through both roots and foliage to stop new plant cell growth. Vegetation absorbs ARSENAL in less than two hours, so rain won't wash off your investment. Within four hours, plant growth ceases. In perennials, ARSENAL translocates thoroughly in the roots to prevent regrowth. This unique chemistry makes the visible results of control more gradual. In some vegetation, loss of color and other outward signs may not be apparent for weeks after application. After a year or more, returning vegetation is mainly desirable annual grasses and legumes.

## ARSENAL IS RIGHT FOR YOUR RIGHTS-OF-WAY.

On railroad, highway or industrial rights-of-way, around power substations, signal boxes, bridge abutments, lumber or freight yards — wherever you need annual total vegetation control, ARSENAL is the smart new choice for the job.



**CYANAMID**  
Agricultural Division  
Wayne, NJ 07470

©1987

Circle No. 101 on Reader Inquiry Card

# COOL-SEASON TURF DISEASES

by Dr. Joe Vargas, Michigan State University

**A** good deal of research in the area of turfgrass diseases has turned to biological management. Biological management of necrotic ring spot, summer patch and typhula blight has been demonstrated.

Another area of interest has been the re-occurrence of resistance to fungicides by turfgrass pathogens, this time involving the pythium blight pathogen *Pythium aphanidermatum* and the anthracnose fungus *Colletotrichum graminicola*. These subjects and many more concerning the current status of turfgrass diseases are discussed in this article.

These diseases, the organisms that cause them, and their cultural, biological and chemical management tools are given in Table 1.

## Biological management

**Necrotic ring spot.** It now appears that necrotic ring spot, caused by *Lepidosphaeria korrae*, is the primary patch disease found on Kentucky bluegrass in the cooler regions of the cool-season turfgrass area. The symptoms can be observed throughout the growing season even though *L. korrae* appears to be most active during the cooler weather of the spring and fall.

The plants that were infected by *L. korrae* in the cooler weather are in a weakened condition and are very susceptible to summer heat stress or drought stress. Subjecting the necrotic ring spot plants to either of these stresses will lead to the death of the weakened plants and the recurrence of symptoms, even though the pathogen may not be active at this time. The symptoms during cool weather are patches six inches to two feet in diameter with straw- to red-colored blades intermingled in the patch.



New strains of pythium are more aggressive than older, wild type strains.

Older patches may have green grass in their centers with the straw- to red-colored blades in the outer area of the patches. When the disease symptoms occur during the warm weather the red blades are often scarce and usually only straw-colored or wilted leaves are present.

Nitrogen is important for recovery of the patches caused by necrotic ring spot. Three to five pounds of actual nitrogen per 1,000 sq. ft. per season is necessary to promote recovery and to prevent new patches from developing.

Proper cultural practices are also important in patch recovery and in the prevention of new patches. These include coring to relieve compaction and layers that result when sod of one soil type is laid on top of soil of another type, which is common practice during the establishment of home

lawns and commercial lawn properties. This results in short rooting during the warm weather (when the roots of the turfgrass plant are confined to the upper layer).

Coring and re-incorporating the soil back into the thatch will, over a period of years, alleviate the layering problem. It may also help manage any potential thatch problem, which is important in managing necrotic ring spot.

Thatch has a poor moisture-holding capacity and turfs growing in a thick thatch are more susceptible to drought stress. Light, frequent irrigation is also important in managing this disease. The theory that deep, infrequent irrigation is more beneficial to turf development is just that, a theory. Preliminary research data indicates that light, frequent waterings may be more beneficial to the turf. Such wa-



# Give yourself a raise

The Hi-Lift BAC-VAC™ picks up where others leave off...another Hustler "Productive Innovation."

A maneuverable Hustler 275, 320, 340 or 400 mower equipped with an easy-dumping Hi-Lift BAC-VAC™ is the most convenient way to leave a clean job. The most advanced catcher available in commercial-



class mowers, the Hi-Lift BAC-VAC™ is totally controlled from the operator's seat.

Above all else, it hydraulically raises 4.5 feet to deposit a 15-bushel load into a container or pickup bed.

The hopper rides behind the operator so visibility, trim capability and maneuverability aren't compromised. Because Hustler 60-inch and 72-inch decks are designed to feed clippings smoothly into the Hi-Lift BAC-

VAC™, there is no need for an extra blower motor to get vacuum action. The Hi-Lift BAC-VAC™ can be installed or removed easily, to meet different work requirements.

Catcher attachments are also available for the Hustler 251 and 262 models. No matter what your requirements, there's a Hustler just right for you.

Excel Hustler maneuverability and versatility mean the utmost in productivity. Visit your dealer soon and put a Hustler to work for you. Or, call toll-free for more information.



**1-800-835-3260**  
In Kansas 1-316-327-4911

Excel Industries, Inc.  
Box 7000  
Hesston, KS 67062-2097

© 1987, Excel Industries, Inc.

**Hustler Tough  
And Built To Last!**



Model 251  
18 hp, 50"



Model 262  
18 hp, 60"



Model 275  
23 hp, 72"



Model 320  
21.5 hp, 72"



Model 340  
28.5 hp, 72"



Model 400  
34 hp, 72"



Model 602D  
32 hp, 72" hillside

Circle No. 115 on Reader Inquiry Card

# LANDSCAPE *Guide* MANAGEMENT

terings on a daily basis, around mid-day, have been shown to help manage necrotic ring spot.

The turf appears to be benefitting culturally from the cooling of the turf and biologically from the build-up of beneficial micro-organisms in the moist thatch that may be antagonistic to *L. korrae*. There are also some new products that help manage the disease biologically.

Lawn Restore, produced by the Ringer Corporation, is a natural organic product that is a complete fertilizer containing all the major nutrients as well as some beneficial micro-organisms that produce substances under laboratory conditions that are antagonistic to the pathogen *L. korrae*. It has also been shown to manage necrotic ring spot under field conditions. Lawn Restore has been effective in both promoting the recovery of existing necrotic ring spot patches and preventing the development of new ones.

Another group of products produced by the Agro-Chem Co. (Green Magic, Strengthen and Renew and Nutra Aid), when used in a systematic program, also have been shown to

manage necrotic ring spot under field conditions. They appear to improve the environment and allow an increase in the natural population of beneficial organisms in the soil and thatch.

The key word is "management." These products are not a one-shot cure, but used systematically on a regular basis, they will manage the disease and provide a healthy turf.

**Typhula blight.** Typhula blight is caused by two species, *Typhula incarnata* and *T. ishkariensis*. *T. incarnata* is the primary species in the eastern U.S. and in southern and mid-regions of the Midwest and western United States. *T. ishkariensis* is most prevalent in the more northern snow mold regions, especially where prolonged periods of permanent snow (two or more months) exist in the midwestern and western U.S.

The two typhula species are easily distinguished from each other when observed soon after the snow melts. *T. incarnata* produces grayish spots in the turf with scattered, fairly large brown sclerotia evident, whereas *T. ishkariensis* spots have a reddish cast

to them and contain numerous small, dark black sclerotia.

Typhula blight only occurs under snow cover. It does not occur in the cool, wet weather of fall and spring, except under leaf piles. Typhula blight has been, and still is, managed primarily by fungicides (Table 1).

Lee Burpee at the University of Guelph has isolates of a saprophytic typhula species, *Typhula phacorhiza* that will biologically manage typhula blight caused by *T. ishkariensis*. This biological management of typhula blight was shown to be effective under field conditions in Ontario. Research is currently being conducted to find a way to make this biological management tool commercially available.

## New fungicide resistance

**Pythium blight.** Metalaxyl resistance to pythium blight caused by *Pythium aphanidermatum* was reported back in 1983 by Dr. P. L. Sanders at Pennsylvania State University on a single golf course in Pennsylvania. This past season, she found resistance to matalaxyl

## CALENDAR Major Disease of Cool-Season Turf

January	February	March	April	May	June	July	August	September	October	November	December
				Dollar Spot							
					Brown Patch						
					Pythium Blight						
					Anthracnose						
		Melting Out				Leaf Spot					
					Red Thread						
Fusarium Patch								Fusarium Patch			
Typhula Blight										Typhula Blight	

**Introducing the greensmower  
engineered and built to meet  
your expectations.**



*For added power, less vibration and longer life, features an 18-horsepower, twin-cylinder engine.*



*For better maneuverability — no cables — equipped with power steering.*



*For easier servicing, features access to valve spools without removing valve bank and a hydraulic pump designed for simple detachment through the use of a flexible coupling.*



*For minimized downtime and increased life of hydraulic components, features 10-micron oil filtration system.*



*For added convenience, specially engineered hydraulic system allows backlapping of individual reel units while on mower.*

From LESCO, the company that listens and responds to customer needs, comes the LESCO 300 Greensmower. This new triplex unit offers more power, better maneuverability, easier service, improved filtration and more convenient backlapping — all at a substantial savings.

Put the advantages of the LESCO 300 Greensmower to work for you. The

mower is priced at \$7,900.00 delivered to you. **5% Additional savings can be yours by picking up your mower at one of our regional distribution facilities**, for further details contact your LESCO sales representative today, or call toll free:

**(800) 321-5325  
NATIONWIDE**

**(800) 362-7413  
IN OHIO**

**LESCO**

LESCO, Inc., 20005 Lake Road, Rocky River, Ohio 44116 (216) 333-9250

Circle No. 123 on Reader Inquiry Card

in several additional locations in other states. We also found metalaxyl resistant strains of *P. aphanidermatum* at two locations in Kentucky on perennial ryegrass fairways.

We concurred with Dr. Sanders' previous findings that these new strains are far more aggressive than the older, wild type strains. They also appear to be pathogenic over a wider range of temperatures, occurring when temperatures were only in the high 70s.

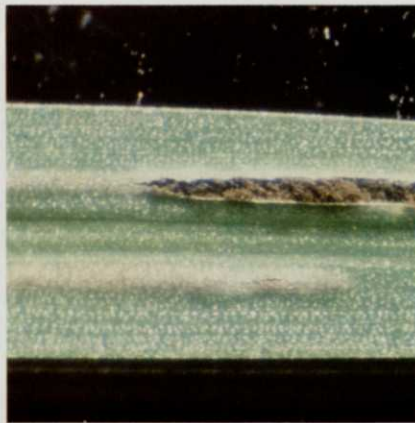
The metalaxyl-resistant strain of *P. aphanidermatum* was not cross-resistant to chloroneb, ethazole, probamocarp or fosetyl A1. These fungicides can be used where these resistant metalaxyl strains occur. How widespread or how persistent these strains will become only time will tell, but a good rule of thumb is that if these strains are going to occur, they will begin to show up the second or third year, especially if multiple applications of metalaxyl are made during the first two seasons.

The fact that the perennial ryegrasses are super susceptible to pythium blight combined with the development of the highly aggressive metalaxyl resistant strains of *P. aphanidermatum*, raises serious questions about the use of the perennial ryegrasses in areas of the country where there is a high incidence of pythium blight.

**Anthracnose.** Resistance to the benzimidazole fungicides (benomyl, thiophanate, thiophanate-methyl) by *Colletotrichum graminicola*, the cause of anthracnose, took much longer to develop than with other fungi like *Erysiphe graminis* (powdery mildew) or *Sclerotinia homeocarpa* (dollar spot).

Resistance to the benzimidazoles by *E. graminis* and *S. homeocarpa* usually occurred in the first three years and often in the second year. On the golf courses from which the benzimidazole-resistant strain of *C. graminicola* was isolated, the superintendent had used benzimidazole fungicide for 14 years. Resistant dollar spot had been observed on the course for over 12 years.

The question is, why did resistance



**Stripe smut is one of the most devastating diseases of turf.**

to the dollar spot organism show up so quickly, whereas resistance to anthracnose took so long? I think the answer lies in the type of pathogen these two fungi are.

*Sclerotinia homeocarpa* germinates and may grow for a short period of time and then infects the plant.

If fungicides like the benzimidazoles eliminate sensitive strains from the population, *S. homeocarpa* is not capable of growing saprophytically after the fungicide has disappeared from the environment in order to re-establish itself throughout the turf area. This allows resistant strains, which are in low numbers in the population, to infect the turf and begin to build up their numbers quickly in the absence of competition from the benzimidazole-sensitive wild type strains. Under such conditions, the benzimidazole-resistant strains can build up rapidly in the turf.

*Colletotrichum graminicola*, on the other hand, spends much of its life living as a saprophyte in the thatch and mat on dead organic matter when it is not a pathogen. So, when fungicides like the benzimidazoles eliminate sensitive strains from the population, the survivors can grow saprophytically and build up the population again.

With this type of competition, it would take benzimidazole-resistant strains many years to build up large

enough numbers to become the dominant strain in the population. The message is that those of you who have been using the benzimidazoles for many years should be on the lookout for the emergence of benzimidazole-resistant strains of *Colletotrichum graminicola*. Don't be lulled into thinking that if resistance hasn't occurred by now, it won't occur.

### Managing stripe spot

This disease, caused by *Ustilago striiformis*, is one of the most devastating diseases of turf. The patch diseases have certainly received all the notoriety in home lawn turf problems but more turf has been lost to stripe smut.

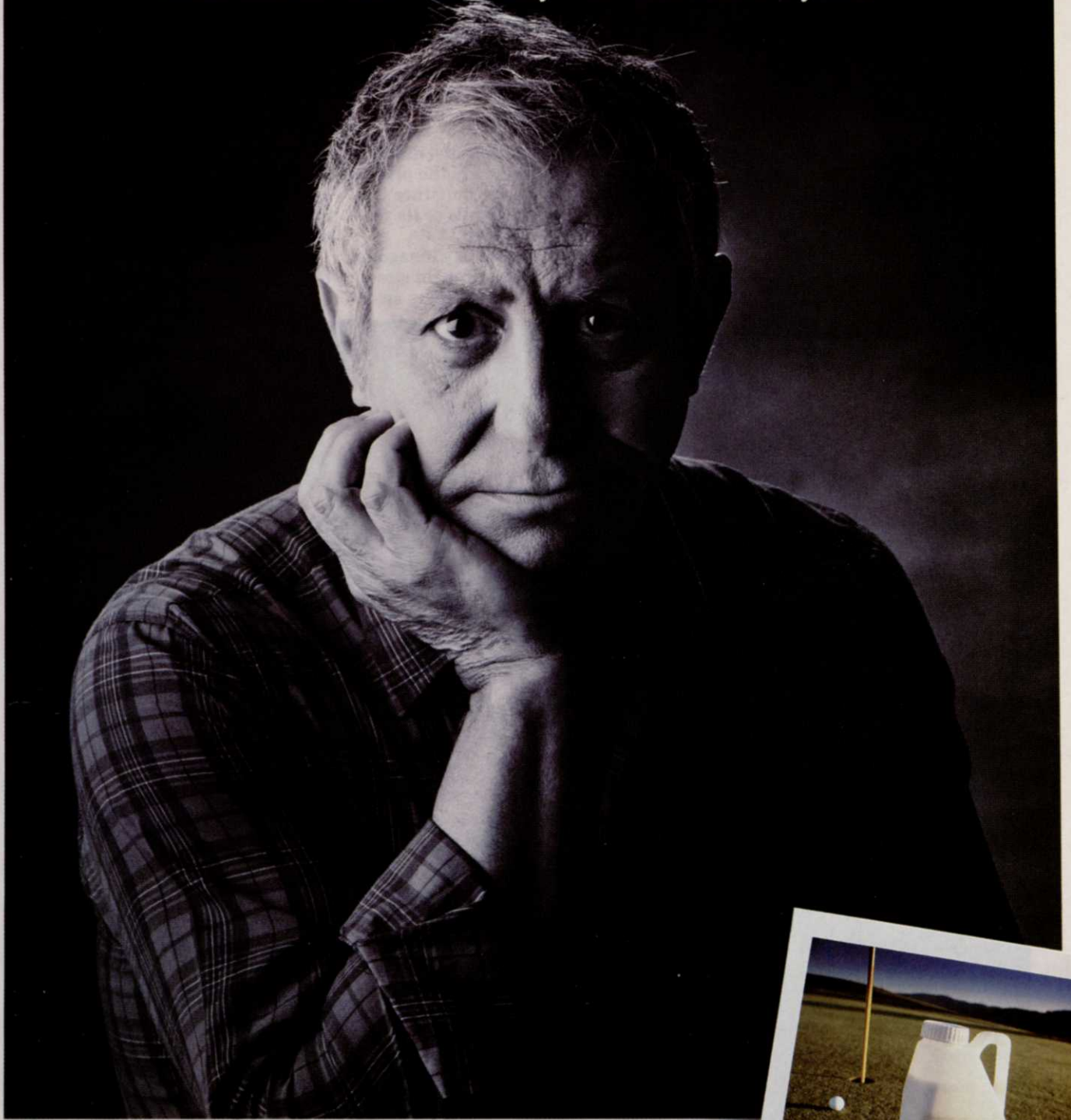
The reason stripe smut doesn't receive all the notoriety is that, in most instances, it is a slower-acting disease that weakens infected plants which are then crowded out by weeds or die under stress randomly as individual plants rather than as large areas dying all at once. The remaining stripe smut infected plants are too weak to fill in the voids and this allows weeds to enter in the turf. If the weeds are broad-leaf or annual grasses, like crabgrass, then selective herbicides can be used to remove them.

However, unlike healthy Kentucky bluegrass, the weakened stripe smut-infected plants cannot fill in the voids where the weeds were selectively removed and eventually the perennial weedy grasses like tall fescue and quackgrass fill in these voids. A total renovation of the existing turf is the only solution to a lawn infested with perennial weedy grasses since there are no selective herbicides.

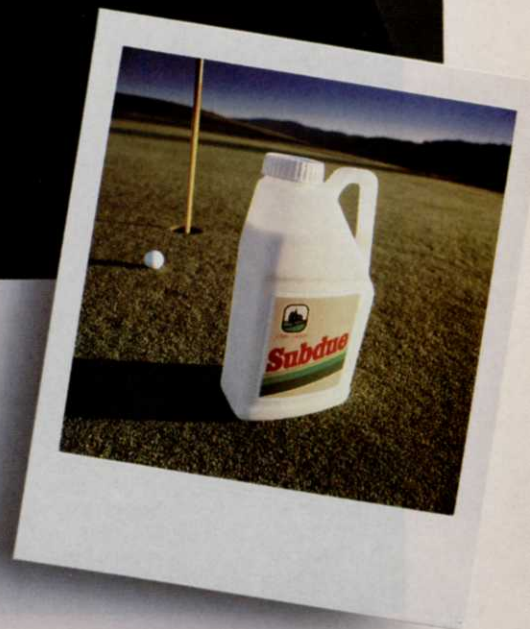
What makes stripe smut such a devastating disease is that it is a systemic perennial disease. This means that once a plant is infected it will remain so for life. Any daughter plants arising from an infected mother plant via rhizomes or stolons will also be infected. So, unlike most other diseases, infection does not have to take place every year. All that's needed is environmental stress for this stripe smut weakened plant to die.

The foliar symptoms are most evident during the cool weather of spring and fall when the fungus grows

“The Pro’s son triggered the sprinklers during today’s tournament. My brother wants me to co-sign a loan. And I just found out both my kids need braces. But what really concerns me is Pythium.”



There’s one sure way to avoid worrying about Pythium. Use Subdue® fungicide. Subdue stops Pythium on contact. And once absorbed by grass roots, Subdue protects your turf against further attack for up to three weeks. So don’t let Pythium get you down. Get Subdue. Because you’ve got other things to worry about. CIBA-GEIGY



throughout the veins of the plant, eventually producing spores which rupture the epidermis, causing the leaves to have a frail, torn appearance.

Though the symptoms are most evident in the cool weather of the spring and fall, most of the turf infected with stripe smut dies in the summer when

the turf is allowed to go under drought stress. This may be due to the plant's inability to conserve moisture because of its torn epidermis or its general weakened condition.

When healthy Kentucky bluegrass is allowed to go under drought stress, it will go dormant and green up again

with the occurrence of late summer or early fall rains. Kentucky bluegrass turf infected with stripe smut, however, will die if allowed to undergo drought stress.

The fact that the disease is systemic suggests that there is little resistance in the plant. Resistance is

## COOL-SEASON TURF DISEASES

**TABLE 1  
TURF DISEASE AND CONTROLS**

Disease	Causal Agent	Hosts	Biological and Cultural Control	Chemical Control
Anthraxnose	<i>Colletotrichum graminicola</i>	Annual bluegrass Fine-leaf fescue Kentucky bluegrass Perennial ryegrass	Adequate nitrogen. Cool grass by syringing.	Maneb plus zinc sulfate, chlorothalonil, benomyl, thiophanate-methyl, thiophanate, thiophanate-methyl + mancozeb, triadimefon
Brown patch	<i>Rhizoctonia solani</i>	All major turfgrass species	Reduce nitrogen. Remove "dew." Increase air movement.	Mancozeb, maneb + zinc sulfate, chlorothalonil, anilazine, vinclozolon, benomyl, thiophanate-methyl, thiophanate, thiram, thiophanate-methyl + maneb, cadmium compounds, thiophanate + thiram, PCNB, iprodione
Dollar spot	<i>Lanzia spp.</i> <i>Moellerodiscus spp.</i>	Annual bluegrass Bahagrass Bermudagrass Centipedegrass Colonial bentgrass Fine-leaf fescues Kentucky bluegrass Perennial ryegrass St. Augustinegrass Zoysiagrass	Increase nitrogen. Remove "dew."	Benomyl, thiophanate, thiophanate-methyl, chlorothalonil, anilazine, fenarimol, cadmium compounds, thiophanate + thiram, thiram, thiabendazole, benomyl, iprodione, thiophanate-methyl + maneb, vinclozolin, triadimefon
Summer patch	<i>Phialophora graminicola</i>	Annual bluegrass Kentucky bluegrass	Light, daily watering during the summer.	Fenarimol, thiophanate-methyl, thiophanate, triadimefon, iprodione, benomyl
<i>Helminthosporium</i> Diseases Brown blight Leaf blotch Melting-out Net blotch Red leaf spot Stem and crown necrosis Zonate Eye spot Leaf spot	( <i>Dreschlera</i> ) <i>D. siccans</i> <i>D. cynodontis</i> <i>D. poae</i> <i>D. dictyoides</i> <i>D. erythrospila</i> <i>D. specifera</i> <i>D. gigantea</i> <i>Bipolaris sorokiniana</i>	Ryegrass Bermudagrass Kentucky bluegrass Fescue Creeping bentgrass Bermudagrass Bermudagrass Bentgrass Fine-leaf fescue, Kentucky bluegrass	Remove clippings. Raise cutting height. Plant resistant cultivars. Moderate spring nitrogen. Daily irrigation.	Mancozeb, chlorothalonil, iprodione, anilazine, maneb + zinc sulfate, PCNB, vinclozolin

*continued on page 40*



# It's Hard To "Resist" A Winner!



2 LBS.

Mallinckrodt

**KOBAN 30**

PYTHIUM

ACTIVE INGREDIENTS  
Pythium spores - 30%  
INERT INGREDIENTS - 70%

### WARNING!

KEEP OUT OF REACH OF CHILDREN  
HAZARDOUS IF SWALLOWED  
MAY CAUSE SKIN IRRITATION  
AVOID CONTACT WITH EYES, NOSE, OR MOUTH  
WASH HANDS THOROUGHLY WITH SOAP AND WATER  
IF SWALLOWED, DRINK WATER OR MILK  
IF ON SKIN, WASH WITH SOAP AND WATER  
IF IN EYES, WASH WITH COLD WATER FOR SEVERAL MINUTES  
IF IN NOSE, WASH WITH COLD WATER FOR SEVERAL MINUTES  
IF IN MOUTH, SWALLOW AND DRINK WATER  
IF ON CLOTHING, REMOVE AND WASH SEPARATELY  
DO NOT FEED TO LIVESTOCK

MALLINCKRODT, INC.

ST. LOUIS, MO 63147  
1-800-325-7155

## KOBAN® for resistance free Root Rot Control

If you've been using anything but KOBAN in your fight against root rot, you're teamed with a loser. Only KOBAN has the winning formulation to not only suppress root rot but kill the fungi.

And KOBAN keeps winning with no resistance problems. KOBAN has been proven effective on fine quality turf and seed treating for over fifteen years without a single case of resistance. That's a winner!

### KOBAN® Comes in Three Convenient Forms.

Apply KOBAN at your convenience for unsurpassed root rot control. Available in three easy-to-use forms—wetable powder, flowable, and granular.

For more information on KOBAN. Call toll-free or contact your Mallinckrodt Turf Product distributor.

You'll be a Winner!

**Mallinckrodt**®

P.O. Box 5439  
St. Louis, MO 63147  
1-800-325-7155

KOBAN®  
WP-6 x 2 lb. bag/case  
Flowable-4 x 1 gal./case  
Granular-40 lb. drum

# LANDSCAPE *Guide* MANAGEMENT

expressed as keeping the infection localized, that is, small spots on the leaves, as in the case of the rust diseases. Leaf rust and stem rust are considered minor diseases of turf because they tend to produce localized lesions whereas stripe rust is a major disease because it is systemic in the plant, indicating little resistance.

Until recently, a stripe smut-in-

fectured turf was subject to a slow but inevitable death, eventually being taken over by perennial weeds, which meant the turf had to be killed by a herbicide like Roundup and completely renovated. However, the development of triadimefon and fenarimol has changed all that. These two fungicides, used on a regular basis, will manage stripe smut.

The first application should occur in the spring just before the turf breaks dormancy, followed by a second application just prior to the summer heat stress period and a third application when the cool nighttime temperatures of the late summer or early fall return.

## Other patch diseases

**Summer patch.** It has become increas-  
*continued on page 44*

## COOL-SEASON TURF DISEASES

**TABLE 1  
TURF DISEASE AND CONTROLS**

Disease	Causal Agent	Hosts	Biological and Cultural Control	Chemical Control
Take-all patch	<i>Gaeumannomyces graminis</i>	Creeping bentgrass Kentucky bluegrass Velvet bentgrass	Reduce soil pH. Avoid liming. Use acidic fertilizers. Sulfur	Fenarimol
Pythium blight (cottony blight)	<i>Pythium spp.</i>	Perennial ryegrass Creeping bentgrass Annual bentgrass	Improve soil drainage. Increase air circulation.	Chloroneb, ethazol, metalaxyl, propamocarb
Red thread	<i>Laetisaria fuciformis</i>	Creeping bentgrass Colonial bentgrass Bermudagrass Annual bluegrass Perennial ryegrass Fine-leaf fescue	Increase nitrogen.	Anilazine, iprodione, triadiefon, vinclozolin, chlorothalonil
Pink patch	<i>Limonomyces roseipellis</i>	Perennial ryegrass Creeping bentgrass Fine leaf fescue	Increase nitrogen.	Try red thread fungicides
Snow molds Typhula blight Fusarium patch	<i>Typhyla spp.</i> <i>Fusarium nivale</i>	Annual bluegrass Colonial bentgrass Creeping bentgrass Fine-leaf fescues Kentucky bluegrass Perennial ryegrass Tall fescue Velvet bentgrass	Avoid early fall nitrogen fertility that leads to lush growth.	Mercury compounds, PCNB products, chlorothalonil, chloroneb. These products may have to be used in combination for effective snow mold management. Benomyl, iprodione, or mancozeb will control Fusarium patch where it occurs alone.
Necrotic ring spot	<i>Leptosphaeria korrae</i>	Kentucky bluegrass	Nitrogen to promote recovery. Light daily irrigation. Lawn Restore, Green Magic, Strengthen & Renew.	Iproione, fenarimol, benomyl, thiophanate, thiophanate- methyl
Stripe smut	<i>Ustilago striiformis</i>	Kentucky bluegrass Creeping bentgrass	Reduce nitrogen. Prevent summer dormancy.	Fenarimol, triadimefon