

**'The best greens I  
ever putted on'**

Harry Anderson, Greens Chairman  
Wilmington CC, Delaware



David Kroll, CGCS, inspects one of 18 PennLinks greens at Wilmington CC, Delaware

## **PennLinks creeping bentgrass – working wonders at Wilmington**

**New bentgrass variety provides a truer putting surface at Wilmington CC.**

When David Kroll, CGCS, was dealt the problem of bentgrass

*This Wilmington green was seeded in early '60s with poor quality seed fraudulently labeled Penncross. All the greens deteriorated to the point that they had to be entirely renovated.*



deterioration on the greens of this prestigious country club, he called in the experts to help. The greens could not be salvaged, so they were treated with methyl bromide and completely re-greened.

Dr. Joe Duich, Penn State University, suggested seeding with a bentgrass coded PSU 126.

Two and a half years later, the greens look great and with PennLinks' more upright growth pattern, putt like a dream. That experimental variety is now named PENNLINKS, and is available in limited quantities.

Available in limited supply this fall in the re-usable 6 gallon "PENN PAIL."



PennLinks' Oregon certified blue tags qualify for cash awards to qualifying turf organizations for turf research. Call our toll-free number for details. Marketed by **TEE-2-GREEN Corp.**, PO Box 250 Hubbard, OR 97032 1-800-547-0255 TWX 510-590-0957

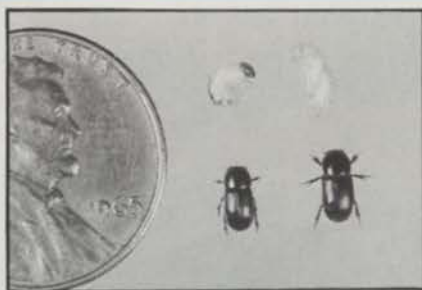
Circle No. 177 on Reader Inquiry Card

# WEEDS TREES & TURF

The Magazine of **LANDSCAPE MANAGEMENT**



38



46



78

## 30 COVER STORY: A RARE BREED

If it weren't for turf research, golf course and landscape management wouldn't be as sophisticated as it is today. In part three of WEEDS TREES & TURF's 25th anniversary series, we look at the developments in golf, seed and irrigation.

## 38 TOUCHING ALL BASES

Incorporating an amusement park with a baseball complex provides plenty of maintenance curve balls under the Florida sun.

## 46 INSECT CONTROL GUIDE

Despite the recent controversy, chemical companies are experimenting with new pesticides. But registration may be a long way off.

## 76 THE RIGHT NICHE

Disease control on trees and ornamentals may be as simple as finding the right environment for the plant to thrive. But when that's not enough, follow this guide.

## 78 THE JEWEL'S GLITTER

At the Arizona Biltmore, you can eat marmalade made from the fruit of the hotel's own orange trees.

## 82 ROYAL FLUSH

When Prince Charles played polo in Chicago last fall, the field had to be in prime condition for spectators and TV cameras. Field managers worked overtime to prepare the field.

## 88 GOVERNMENT GLOOM

Working within the framework of a bureaucracy can give government workers the blues. Here are what some must cope with en route to doing their jobs as effectively as possible.

## 94 FIT FOR A QUEEN

King's Island Golf Course is the home of the Ladies Professional Golf Association championship. The queens of golf treat the superintendent like a king—and vice versa.

## 100 80 AND GOING STRONG

The Illini Country Club may be 80 years old, but this 'Mike Royko' keeps the spirit of the course going strong.

## 104 PIONEERING PROFESSIONAL

Two words characterize George Thompson: 'pioneer' and 'professional.' He's not afraid to try something new, but whatever it is, it reflects positively on his golf course.

## 110 DIVERSIFIED SERVICES

Does your landscape contracting company need more revenue? Before you decide to diversify your business, consider these points.

## DEPARTMENTS

- 4 NEWS/TRENDS
- 8 GREEN INDUSTRY NEWS
- 16 SHORT CUTS
- 112 JOB TALK
- 114 PROBLEM SOLVERS
- 116 PRODUCTS
- 128 EVENTS
- 130 CLASSIFIED
- 138 AD INDEX
- 140 OUTLOOK



Silvery dew on weeds, trees and turf, celebrating the magazine's silver anniversary, by Larry Kassell.

WEEDS TREES & TURF (ISSN 0043-1753) is published monthly by Harcourt Brace Jovanovich Publications. Corporate and Editorial offices: 7500 Old Oak Boulevard, Cleveland, Ohio 44130. Advertising Offices: 7500 Old Oak Boulevard, Cleveland, Ohio 44130, 111 East Wacker Drive, Chicago, Illinois 60601 and 455 East Paces, Ferry Road, Suite 324, Atlanta, Georgia 30305. Accounting, Advertising Production and Circulation offices: 1 East First Street, Duluth, Minnesota 55802. Subscription rates: \$25 per year in the United States; \$35 per year in Canada. All other countries: \$70 per year. Single copies (pre-paid only): \$2.50 in the U.S.; \$4.50 in Canada; elsewhere \$8.00; add \$3.00 for shipping and handling per order. Second class postage paid at Duluth, Minnesota 55806 and additional mailing offices. Copyright © 1987 by Harcourt Brace Jovanovich, Inc. All rights reserved. No part of this publication may be reproduced or transmitted in any form or by any means, electronic or mechanical including photocopy, recording, or any information storage and retrieval system, without permission in writing from the publisher.

POSTMASTER: Send address changes to WEEDS TREES & TURF, P.O. Box 6198, Duluth, Minnesota 55806-9898.

ABP

VBP

HBJ

A HARCOURT BRACE JOVANOVIH PUBLICATION



Covers a lot of ground for less.



Bayleton is a registered trademark of Bayer AG, Leverkusen, Germany. It is a fungicide that controls turf diseases such as brown patch, dollar spot, and large patch. It is effective against both active and latent infections. Bayleton is available in a granular formulation for use on golf courses, lawns, and other turf areas. For more information, contact your local distributor or Bayer AG, P.O. Box 4913, Kansas City, MO 64120.

# Bayleton.

Its low cost looks good on paper. And its long-lasting turf disease control looks good on your fairways. BAYLETON turf fungicide. For the long haul. Mobay Corporation, Specialty Products Group, Box 4913, Kansas City, Mo. 64120



BAYLETON is a Reg. TM of Bayer AG, Leverkusen. 6-2256

Circle No. 148 on Reader Inquiry Card

## Corporate 'campuses' reshaping suburbs

■ Corporate business parks are radically altering the appearance of many suburbs. With low-rise buildings surrounded by rolling expanses of lawn, clusters of plants, attractive water features and recreational amenities, these business parks are taking on the appearance of college campuses. Much more so than the stereotypical image of a single office building surrounded by an asphalt parking lot.

"Whether created for an individual corporation, a multi-company site or even an industrial park, this 'total environment' approach to development has as its primary goal improved quality of life in the workplace," observes Mark Hunner, vice president of The Brickman Group.

Among the reasons Hunner cites for this growing emphasis are increased competition for tenants, a growing awareness by developers of the benefits of aesthetics, and a desire to create a strong, memorable identity.

"Owners and developers believe, too," notes Hunner, "that if they create a more enjoyable work environment, employee satisfaction and productivity will improve."

"Companies are finding that a lower profile in a more natural setting is a good way to keep neighbors—especially residential property owners—happy."

## Telephone problems

■ According to a recent update by the American Association of Nurserymen, there have been recent reports of problems emerging from telephone sales of herbicides. The problems include: general sale of products not registered in most states, over-pricing, watered-down products, and false claims concerning efficacy.

"Products are delivered collect, and when true nature of herbicide is determined, refund is virtually impossible to obtain," says the update.

The AAN suggests that herbicide purchasers deal with known distributors and avoid buying from unknown telephone vendors.

### WT&T Editorial Staff



Jerry Roche



Heide Aungst



Jeff Sobul

## STAFF

Editor  
**Jerry Roche**, Cleveland  
 Associate Editor  
**Heide Aungst**, Cleveland  
 Assistant Editor  
**Jeff Sobul**, Cleveland  
 Publisher  
**Dick Gore**, Atlanta  
 Associate Publisher  
**Ron Kempner**, Atlanta  
 Senior Vice President  
**Tom Greney**, Chicago  
 Group Vice President  
**Robert Earley**, Cleveland  
 Production Manager  
**Carol Young**, Duluth  
 Production Supervisor  
**Marilyn MacDonald**, Duluth  
 Graphic Design  
**Jeff Elliott**, Duluth  
 Graphic Coordinator  
**David Komitau**, Cleveland  
 Circulation Supervisor  
**Gail Mantay**, Duluth  
 Directory Coordinator  
**Michele Missinne**, Duluth  
 Reader Service Manager  
**Gail Kessler**, Duluth  
 Promotion Director  
**Linda Winick**, Cleveland

## OFFICES

**ATLANTA**  
 455 East Paces  
 Ferry Road Suite 324  
 Atlanta, GA 30305  
 (404) 233-1817

**CLEVELAND**  
 7500 Old Oak Boulevard  
 Cleveland, OH 44130  
 Editorial: (216) 243-8100

**CHICAGO**  
 111 East Wacker Drive  
 Chicago, IL 60601  
 (312) 938-2344

**SEATTLE**  
 1333 N.W. Norcross  
 Seattle, WA 98177  
 (206) 363-2864

**DULUTH**  
 120 West Second Street  
 Duluth, MN 55802  
 (218) 723-9200

## MARKETING REPRESENTATIVES

**Dick Gore**  
 Atlanta (404) 233-1817  
**Ron Kempner**  
 Atlanta (404) 233-1817  
**Jon Miducki**  
 Cleveland (216) 243-8100  
**Robert Mierow**  
 Seattle (206) 363-2864

**HBJ** HARCOURT BRACE JOVANOVIICH PUBLICATIONS

Robert L. Edgell, Chairman; Richard Moeller, President; Lars Fladmark, Executive Vice President; Ariand Hirman, Treasurer; Thomas Greney, Senior Vice President; Ezra Pincus, Senior Vice President; Joe Bilderbach, Vice President; James Gherna, Vice President; George Glenn, Vice President; Harry Ramaley, Vice President.



## Imagine what it might look like with Nutri-Kote® Plus Apron® coated seed.

Photograph Courtesy NASA

Nutri-Kote® Plus Apron® coated seeds are delivering dramatic results for turf professionals nearly everywhere.

Even when the soil, weather and traffic conditions are less than perfect, every Nutri-Kote Plus Apron coated seed has a much better chance of reaching maturity compared to uncoated seed.



**NONCOATED RYEGRASS**



**NUTRI-KOTE PLUS APRON COATED RYEGRASS**

NUTRI-KOTE is a registered trademark of CelPril Industries, Inc. APRON is a registered trademark of CIBA-GEIGY.

The unique combination of nutrients, micro-nutrients and the systemic fungicide Apron controls pythium and other seedling diseases. Turf establishment is much faster than uncoated seeds. Root development is greatly enhanced. There's more lush green growth. And seeds stay where you plant them.

Discover for yourself what turf professionals at golf courses, stadiums, parks, and municipalities across the country are finding out. That Nutri-Kote Plus Apron coated seed produces healthier, better-looking turf. And we're not just promising you the moon.

But maybe someday . . .

# NUTRI-KOTE® PLUS APRON®

**You'll always look like a pro.**

Seed Coatings by CelPril Industries, Inc.  
251 Oak Street, Manteca, CA 95336, 209-823-1738

Circle No. 108 on Reader Inquiry Card

6-2725



**Larry, what makes Fairway Fertilizer with TGR™ Poa Annua Control so different from other weed control products?** “Instead of acting like a

conventional herbicide, the new Scotts product *slows* the growth of the *Poa* plant, diminishing its competitive ability. The result is a gradual, more natural transition to desirable grasses without a sudden decrease in playing surface quality.”

**That really changes the way you think about growth regulators. How does it fit in with current turf management practices?** “Fairway Fertilizer with TGR Poa Annua Control has proven to be effective in reducing *Poa* populations even under conditions that would normally enhance their growth. Extensive testing has shown that this product fits in with a range of different management practices. Treat your turf with successive fall and spring applications until the *Poa annua* has decreased to the desired level.”

**What about those ugly *Poa annua* seedheads?** “A significant benefit of the new product is a reduction in the visibility of *Poa annua* seedheads after one

application. When applied before seedhead emergence in the spring, the treatment will slow the emergence of the seedhead stalk, resulting in fewer visible seedheads and more uniform turf color and playing surface.”

**How about color response?** “This formulation provides not only selective control of *Poa annua*, but also extends the greening response well beyond what an equal rate of fertilizer alone can achieve.”

**For more information on Scotts new Fairway Fertilizer with TGR Poa Annua Control, call your ProTurf Tech Rep. Or call Scotts direct at 800-543-0006. In Ohio, call collect (513) 644-2900.**

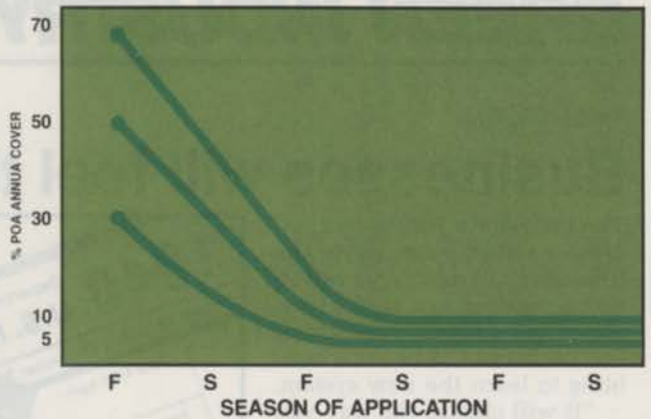
**“Now, with Scotts®  
new TGR™ technology,  
you can outgrow your  
*Poa annua* problems.”**

Dr. Larry Widell, Scotts Research project leader (Plant Growth Regulator R&D), talks about new Fairway Fertilizer with TGR™ Poa Annua Control.





Aggressive bentgrass can be seen encroaching into an area of *Poa annua* treated with ProTurf Fairway Fertilizer with TGR Poa Annua Control.



Typical *Poa annua* population suppression is shown over time with continued use of Scotts Fairway Fertilizer with TGR Poa Annua Control. The degree of control may be influenced by turfgrass management techniques, climate, soil type and *Poa annua* biotype.



The treated area (left) in this mixed *Poa annua*/bentgrass fairway has been converted to predominantly bentgrass after three applications.



Notice the selective elimination of the *Poa annua* and the increased greening of the treated plots 7 weeks after application to a mixed stand of perennial ryegrass, Kentucky bluegrass and *Poa annua*.



Fewer seedheads are apparent in fairways when treated in the spring. The lens cap indicates the upper right corner of the treated plot.



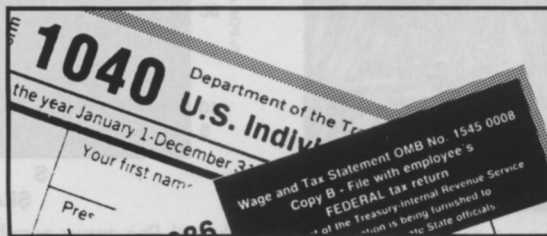


## TAX REFORM

### Businesses will feel the bite from reform

The tax reform passed by Congress in 1986 represents the broadest change in taxation since income tax was introduced. As a result, individuals and businesses alike are scrambling to learn the new system.

"It will change the way you do business planning," says Michael E. Mares, a partner in the Virginia-based accounting firm Rauch, Witt & Co. Taxes on capital gains from selling assets have increased roughly 12 percent from last year. Tax credits for equipment purchases have been repealed retroactive to Jan. 1, 1986. Credits from prior to 1986 will be cut 35 percent. In addition, the equipment depreciation period has been stretched from five to seven years, with lower deductions in the first two years, increasing taxes. However, the expense amount on equipment pur-



chases has been increased to the first \$10,000 spent, up from \$5,000. "The remaining (expense) is depreciated over the seven years," Mares explains.

Deductions for miscellaneous business expenses have been nearly eliminated: if they exceed two percent of business income, the amount above that two percent can be deducted. The deduction for a business meal has also been cut to 80 percent.

Also, says Mares, "The Internal

Revenue Service now has the authority to disallow what they consider to be lavish and extravagant meals and other forms of entertainment. It is going to be interesting to see what some revenue agents think are lavish and extravagant and what we as taxpayers think are lavish and extravagant," he comments.

Mares' accounting firm has published a booklet outlining changes in the tax structure, but he recommends seeking professional advice when preparing taxes for a detailed explanation of changes.

Though the tax structure is set for 1987, further changes may be in store. Mares says 40 tax amendment bills have already been introduced in Congress this year.

Mares spoke on the topic at the 1987 Virginia Turfgrass Conference.

## RESEARCH

### Yet unfound: answers for 'black layer'

One of the most heavily-attended sessions at the most recent Virginia Turfgrass Conference was what was originally intended to be a panel discussion of summer decline of bentgrass. Prompted by questions from concerned superintendents, the session ended as a discussion of the progress on finding a cure for anaerobic black layer.

Seated on the panel were Drs. David Chalmers and Houston Couch of Virginia Tech University; Clinton F. Hodges of Iowa State University and Leon T. Lucas of North Carolina State University.

While the panelists said progress was being made, none could provide a conclusive solution to the problem, which has taken out a number of greens on courses throughout the country.

The panelists concluded that excess water is not the only factor causing the disease, and the problem, though more prevalent in sand-based greens, is not limited to them.

Hodges reported that there is a connection between the black layer and



Left to right, Drs. David Chalmers, Houston Couch, Virginia Tech University, Clinton F. Hodges, Iowa State University and Leon T. Lucas, North Carolina State University, prepare for their panel discussion.

algae presence. The algae feeds off of calcareous sand, present in many sand bases, creating a film layer which anaerobic organisms feed on.

Hodges suggested checking the sand base for calcium presence, and checking irrigation water—especially if it comes from a pond or lake on the course—for algae content. Using algae-free water is a benefit, he added.

Chalmers recommended using cultural practices to at least isolate the problem. Aeration, he said, has shown good results.

Couch said he believes the eventual cure for the problem will be a chemical one. He added that he and Hodges are seeking funding for a joint research project to further study black layer.

Circle  
the  
Reader  
Service  
numbers  
of those  
items of  
interest  
to you.

For fastest response, use the peel-off label from the front cover.

NAME \_\_\_\_\_

TITLE \_\_\_\_\_

FIRM \_\_\_\_\_

ADDRESS \_\_\_\_\_

CITY \_\_\_\_\_

STATE \_\_\_\_\_ ZIP \_\_\_\_\_

TELEPHONE (     ) \_\_\_\_\_

**PLACE COVER LABEL HERE**

**PRINT PHONE NUMBER BELOW**

101	115	129	143	157	171	185	199	213	227	241	255	269	283	297	311	325
102	116	130	144	158	172	186	200	214	228	242	256	270	284	298	312	326
103	117	131	145	159	173	187	201	215	229	243	257	271	285	299	313	327
104	118	132	146	160	174	188	202	216	230	244	258	272	286	300	314	328
105	119	133	147	161	175	189	203	217	231	245	259	273	287	301	315	329
106	120	134	148	162	176	190	204	218	232	246	260	274	288	302	316	330
107	121	135	149	163	177	191	205	219	233	247	261	275	289	303	317	331
108	122	136	150	164	178	192	206	220	234	248	262	276	290	304	318	332
109	123	137	151	165	179	193	207	221	235	249	263	277	291	305	319	333
110	124	138	152	166	180	194	208	222	236	250	264	278	292	306	320	334
111	125	139	153	167	181	195	209	223	237	251	265	279	293	307	321	335
112	126	140	154	168	182	196	210	224	238	252	266	280	294	308	322	336
113	127	141	155	169	183	197	211	225	239	253	267	281	295	309	323	337
114	128	142	156	170	184	198	212	226	240	254	268	282	296	310	324	338

# WEEDS TREES & TURF

MARCH 1987

This card void after

May 15, 1987

MY PRIMARY BUSINESS AT THIS LOCATION IS:  
(PLEASE CHECK ONE ONLY IN EITHER

A, B OR C)

**A. LANDSCAPING/GROUND CARE AT ONE OF THE  
FOLLOWING TYPES OF FACILITIES:**

- 0005  Golf courses  
 0010  Sport complexes  
 0015  Parks  
 0020  Rights-of-way maintenance for highways, railroads & utilities  
 0025  Schools, colleges & universities  
 0030  Industrial & office parks/plants  
 0045  Condominiums/apartments/housing developments/  
hotels/resorts  
 0050  Cemeteries/memorial gardens  
 0060  Military installations & prisons  
 0065  Airports  
 0070  Multiple government/municipal facilities  
 Other type of facility (please specify)

**B. CONTRACTORS/SERVICE COMPANIES/CONSULTANTS:**

- 0105  Landscape contractors (installation & maintenance)  
 0110  Lawn care service companies  
 0125  Landscape architects  
 0135  Extension agents/consultants for horticulture  
 Other contractor or service  
(please specify) \_\_\_\_\_

**C. SUPPLIERS:**

- 0205  Sod growers  
 0210  Dealers, Distributors  
 Other supplier (please specify) \_\_\_\_\_

Approximately how many acres of vegetation do you  
maintain or manage? \_\_\_\_\_

What is your title? (please specify) \_\_\_\_\_

I would like to receive (continue receiving)

**WEEDS TREES & TURF** each month: YES  NO

Your Signature: \_\_\_\_\_ Date: \_\_\_\_\_

  
**BUSINESS REPLY MAIL**



FIRST CLASS PERMIT NO. 665 DULUTH, MINNESOTA

POSTAGE WILL BE PAID BY ADDRESSEE

READER SERVICE DEPARTMENT

**WEEDS TREES & TURF**

POST OFFICE BOX 6049  
DULUTH, MINNESOTA 55806-9749

  
**NO POSTAGE  
NECESSARY  
IF MAILED  
IN THE  
UNITED STATES**

**GET  
MORE  
FACTS**

