

# SHORT CUTS

**THATCH ANSWERS.....**Why do your turfgrass areas have thatch? There is still much research to be done, says Ohio State University's Dr. John Street, but there are also some misconceptions to correct. "Some studies indicate that, in cool-season grasses, there's no relationship between the use of nitrogen and thatch accumulation," he says. Dr. Street also notes this: it's been proven that the higher you mow the grass, the more thatch can accumulate, but there's no consistent relationship between thatch occurrence and pre-emergent and broadleaf herbicide use.

**WINTER OF DISCONTENT.....**That's what it's been at Dartmouth College. Last month a faculty committee report contended that academic quality was threatened by poor leadership. The report cited college president David T. McLaughlin for a decision-making style that had led to a recurring sense of crisis, according to the *New York Times*. McLaughlin used to head The Toro Co. When he abruptly left in the early 1980s, people were probably saying the same thing. Toro grows quite well now under the leadership of Kendrick Melrose.

**AUTHOR, AUTHOR.....**Paul Domholt of the Minneapolis Park and Recreation Board recently became a well-known writer. He co-authored "How to Prune Trees the Right Way" in the February edition of *The Family Handyman* magazine. Domholt, who also edits the board's "Knotty News" newsletter, collaborated with Mark Schmidlin on the magazine article.

**CONTROLLED CONTROL.....**Ciba-Geigy Corp. has come up with a novel idea: pre-measured fungicide. Lawn managers need only loosen one cap, squeeze, and the right amount of Subdue fungicide is pre-measured, in a separate compartment right in the quart bottle. Then you just pour and apply. It's a concept more pesticide manufacturers would do well to emulate, since it also decreases the possibility of a spill.

**'PROGRAM' NOTES.....**George W. Park Seed Co. is entering the fast-growing market in computer programming for the green industry. It has added landscape, nursery and financial manager programs to its line of GreenHaus software. The landscape manager program consists of estimating, job costing, inventory, purchase order tracking, and accounts receivable. Landscape managers can create hypothetical estimates and often establish more competitive positions in bidding for jobs. For more information, contact Dave Phillips or Greg Gabrels at Park, Cokesbury Rd., Greenwood, SC, 29647-0001; phone (800) 845-3366.

**REFERENCE POINTS.....**Two special issues of the *Lakeshore News* are being offered as references for green industry professionals. One covers turfgrass and wildflower seed, the other pre-emergence herbicides. To obtain copies, write Grass Seed Issue or Pre-Emergence Issue, Lesco, Inc., PO Box 16915, Rocky River, OH, 44116. Include \$1 to cover the cost of postage and handling.

**'HOUNDING' THE SOIL.....**One of the most popular products in the green industry, judging by the response of WEEDS TREES & TURF readers, is the Rock Hound Landscape Rake, an attachment for a Bobcat loader that picks rocks and debris from soil. Three-hundred sixty teeth are positioned so that stones as small as 3/4-inch and as large as eight inches are picked up. Melroe Co. has purchased the rights to manufacture the Rock Hound and to sell the Rock Hound to its own dealers.

the professional's  
partner™

The  
Andersons

## EAST

**ALLEGHENY LAWN PRODUCTS**  
Wexford, PA (412) 935-2290

**FARM & GOLF COURSE SUPPLY CO., INC.**  
Philadelphia, PA • (215) 483-5000

**FISHER & SON COMPANY, INC.**  
Malvern, PA • (215) 644-3300

**CHARLES C. HART SEED CO.**  
Wethersfield, CT • (203) 529-2537

**HISTAND SUPPLY**  
Wycombe, PA • (215) 598-3102

**LOFT'S/MARYLAND, INC.**  
Beltsville, MD • (301) 937-9292

**NORTHAMPTON COUNTY SEED CO.**  
Bath, PA • (215) 837-6311

**ROCKLAND CHEMICAL CO., INC.**  
W. Caldwell, NJ • (201) 575-1322

**TURF SPECIALTY, INC.**  
Hooksett, NH • (603) 485-7866

**WILSON FEED AND SEED**  
Richmond, VA • (804) 232-6791

## MID-WEST

**BUNTON SEED COMPANY**  
Louisville, KY • (502) 583-9040

**CORY ORCHARD SUPPLY**  
Indianapolis, IN • (317) 634-7963

1-800-ORCHARD (Indiana only)  
1-800-634-7963 (OH, KY, MI, IL)

**LEATHERMANS, INC.**  
Canton, OH • (216) 452-8866

1-800-362-0487 (inside Ohio)  
1-800-542-7333 (outside Ohio)\*

**C.O. LOWE SALES**  
Columbus, OH • (614) 771-0486

**PROFESSIONAL TURF SPECIALTIES**  
Champaign, IL • (217) 352-0591

**TENNESSEE OUTDOOR POWER, INC.**  
LaVergne, TN • (615) 793-6052

1-800-854-4851

**THORNTON-WILSON, INC.**  
Maineville, OH • (513) 683-2141

**TOLEDO TURF EQUIPMENT**  
Toledo, OH • (419) 473-2503

**TURF AND TREE SUPPLIES**  
Rockton, IL • (815) 624-7578

**TURF PRODUCTS LTD**  
W. Chicago, IL • (312) 668-5537

**TURF SPECIALTIES CORP.**  
Fort Wayne, IN • (219) 484-6338

1-800-552-1989 (Indiana only)

**TURFGRASS, INC.**  
South Lyon, MI • (313) 437-1427

1-800-521-8873 (MI only)

**WEST**  
**BIG BEAR EQUIPMENT, INC.**  
Omaha, NE • (402) 331-0200

**BIG BEAR TURF EQUIPMENT CO.**  
Eldridge, IA • (319) 285-4440

**DAKOTA TURF SUPPLY, INC.**  
Sioux Falls, SD • (605) 336-1873

**R.L. GOULD**  
St. Paul, MN • (612) 484-8411

**OUTDOOR EQUIPMENT CO.**  
Maryland Heights, MO • (314) 569-3232

**ROBISON'S LAWN AND GOLF, INC.**  
Wichita, KS • (316) 942-2224

**ROBISON'S LAWN AND GOLF, INC.**  
Grandview, MO • (816) 765-3333

**TURF MANAGEMENT SUPPLY**  
Sun Prairie, WI • (608) 837-5598

**WISCONSIN TURF EQUIPMENT CORP.**  
Janesville, WI • (608) 752-8766

**WISCONSIN TURF EQUIPMENT CORP.**  
New Berlin, WI • (414) 544-6421

\*Outside Ohio only applies to these states:  
Pennsylvania, West Virginia, New York,  
Kentucky, Indiana, Michigan

# COMPATABILITY.

## Introducing Lawn Pride™ Chelated Iron. The Clear-Cut Choice When Compatibility Counts.

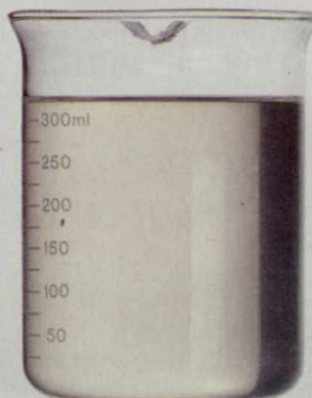
New Lawn Pride from The Andersons is the 6% liquid chelated iron that's completely compatible with N-P-K formulas, urea formaldehyde, high pH water and virtually all herbicides and pesticides. That's compatibility ability!

**If that's not good news enough, here's more.** Lawn Pride is totally non-staining and can safely be used around sidewalks and drives—equipment and houses. It's also non-settling in your tank—another problem solved.

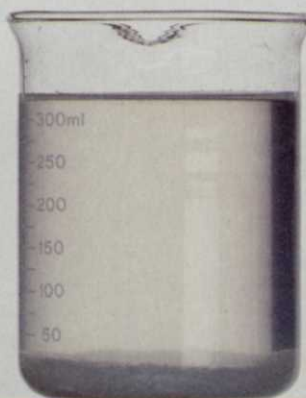
It can be applied anytime of the day with long-lasting results you can see within 24-48 hours. And, if storage is a concern, Lawn Pride stays stable for a minimum of a year.

The Andersons' Lawn Pride even saves you money. In comparison with complexed iron products, substantially less Lawn Pride is used in your mix. And that can add up to big savings.

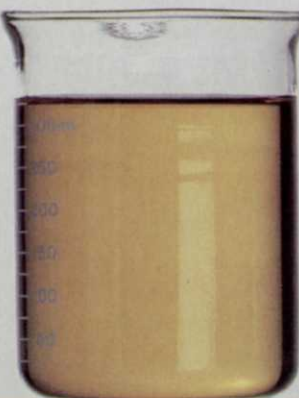
Lawn Pride  
w/NPK (16-3-6)



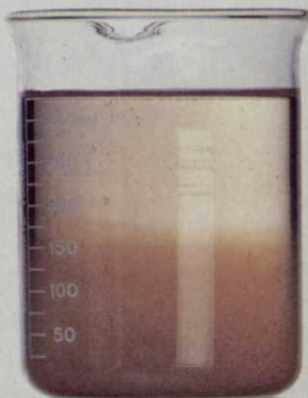
Complexed Iron  
w/NPK (16-3-6)



Lawn Pride  
w/Amine Herbicide



Complexed Iron  
w/Amine Herbicide



### Lawn Pride's budget compatible, too.

Lawn Pride from The Andersons is the chelated iron that costs no more than complexed. That means you're getting premium performance without paying a premium price.

Lawn Pride is available now at your close-by Andersons Distributor listed on the adjoining page. Or, if you're not sold yet and want to know more, call The Andersons Product Information Center toll-free. Call 1-800-225-ANDY.

Circle No. 101 on Reader Inquiry Card

Lawn Pride  
w/High pH Water



Complexed Iron  
w/High pH Water





# THE ADVANTAGE OF A BROKEN



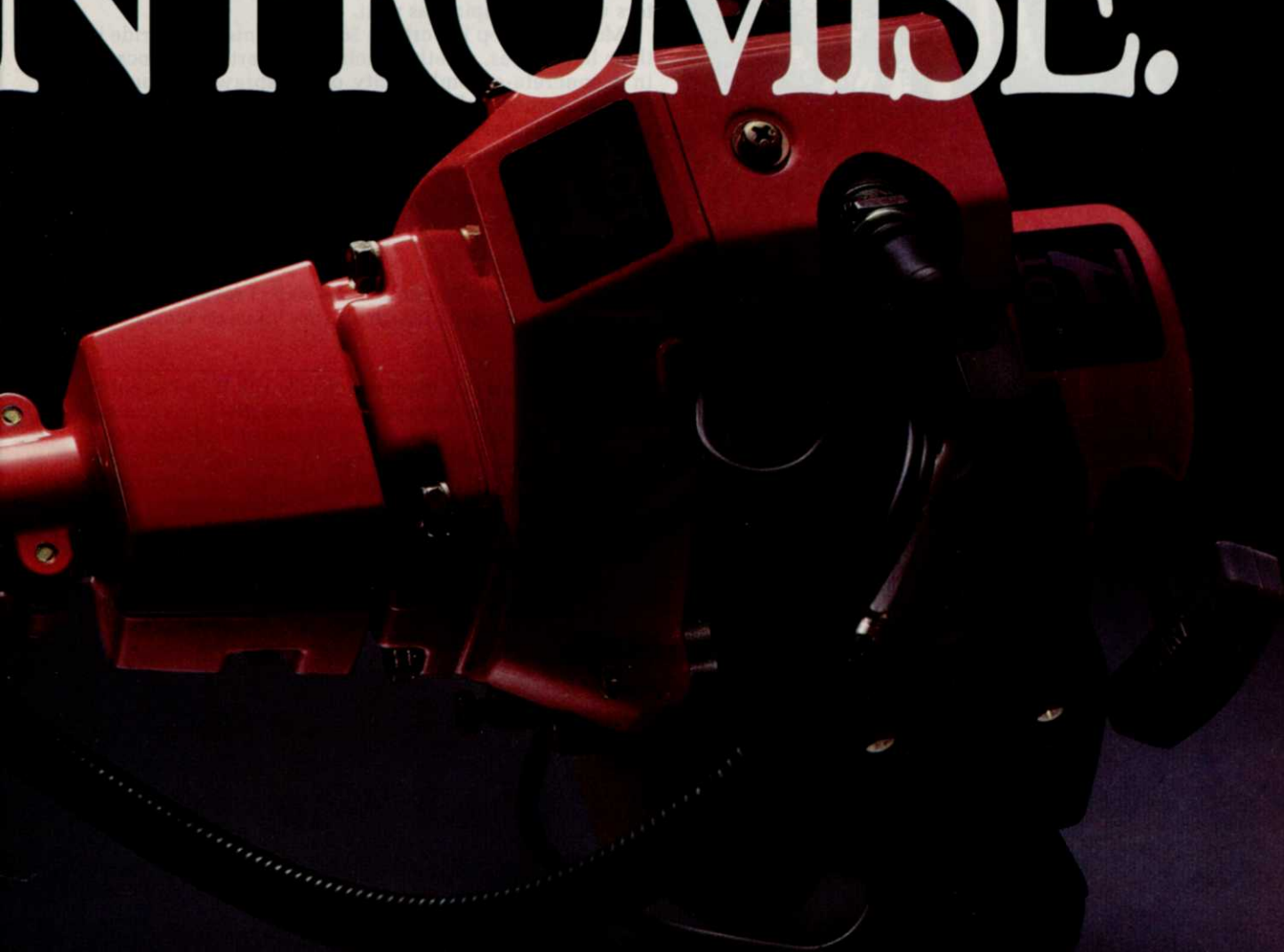
IF YOUR TORO TRIMMER BREAKS  
DURING THE FIRST YEAR, WE'LL FIX IT  
OR GIVE YOU A LOANER FREE.

Introducing the Broken Promise.  
A bold guarantee that puts an end to downtime  
by keeping you working even when your  
gas trimmer isn't. Simply stated, the Broken

Promise guarantees if your Toro straight-shaft  
gas trimmer fails due to equipment failure  
within the first year, your Toro dealer will fix it  
right away or give you a loaner at no charge.

We believe our straight-shaft gas trimmers  
are the finest on the market. In fact, their  
performance and value equal those of any Toro  
product. The Broken Promise applies to the

# ADVANTAGES IN PROMISE.



24cc TC3000 and TC4000, and the 33cc TC5000. All three feature Toro's famous straight-line power, plus the versatility of optional blade accessories.

What's more, we want you to take advantage of this time-saving guarantee as soon as possible. Stop in and see your participating Toro Dealer for details about the

"Broken Promise" No Downtime Guarantee.

After all, there are many gas trimmer dealers who promise customer satisfaction. Now only your Toro Dealer guarantees it. Promise.

**TORO**

HAVEN'T YOU DONE WITHOUT  
A TORO LONG ENOUGH?

Circle No. 151 on Reader Inquiry Card



# DRESSED UP

Landscaping is big business at the nation's big businesses. An attractive landscape conveys a positive image.

by Heide Aungst, associate editor

**S**mart corporate executives keep up their personal image by using dress-for-success techniques. Today, higher-echelon business people are realizing the importance of dressing up their corporate headquarters with landscaping, as well.

Most of the top 10 Fortune 500 companies take pride in their landscapes, whether their headquarters are located in a concrete-entombed city or on sprawling country acreage. Some employ their own staffs, others contract the work out. Either way, each crew has its own tricks to satisfy the company for which it works.

Perhaps the most difficult landscape jobs are New York City-based companies—No. 1 Exxon, No. 3 Mobil, and No. 8 American Telephone & Telegraph.

## Turf-less Exxon

Rockefeller Center's maintenance staff of seven takes care of Exxon's landscape, though bids are taken on some major projects.

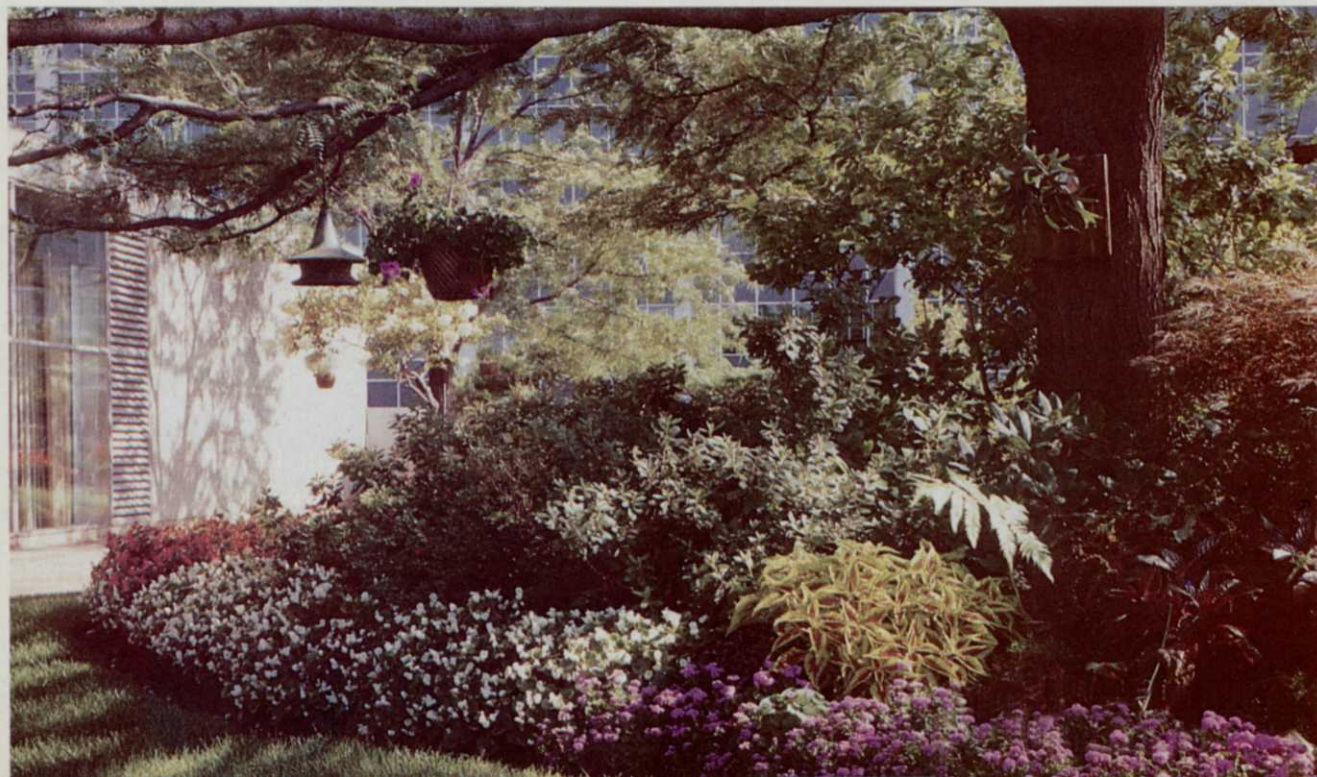
---

*Editor's note: IBM (No. 6) refused to talk with WT&T about its landscaping. A company spokesman says IBM won't endorse one contractor. Settgas's company installed the landscaping at IBM's headquarters in Armonk, N.Y., and has nothing nice to say about how IBM treats its contractors. Similarly, Laflamme's dealings with IBM have been negative.*

---

**Amoco, Chicago—no turf, but plenty of ground cover.**

**Ford Motor, Dearborn, Mich.—when the budget is cut, so is turf care.**





# THE GENTLE GIANTS

Here are E-Z-GO's hard workers in three- or four-wheel, gas or electric models. With durable, diamond-plated steel Polane-coated panels and load beds, including options such as sprayers, aerators, spreaders, top dressers, and more. Each one tough but easy on turf.



## The GXT-7

Here's the heavy-duty workhorse in the line. Powered by an 18 H.P. engine for payloads of up to 1500 pounds. For golf course or public grounds, its large load bed has sides and tailgate. Options include a hydraulic dump, PTO, and range changer. The GXT-7 adapts to many accessories: sprayers, spreaders, top dressers, and aerators to handle any job.

## The GXT-800

Reliable, economical, this mid-size hauler more than pulls its own weight. It has a two-cycle, 244cc engine with rack and pinion steering, heavy-duty springs, and hydraulic shocks, plus a whopping 1000-pound load capacity. Options and accessories such as cabs, bed covers and loading ramps make it an ideal all-around utility vehicle.



## The XT-500

All brains and brawn. 1000-pound capacity, mid-size, powered by a 36-volt high efficiency electric motor. Perfect for hospitals and campuses, wherever quiet efficiency is as important as durability.



## The GXT-300

This tough gas-powered three-wheel vehicle is perfect for light to medium-sized loads. A two-cycle, oil injected, 244cc engine keeps it running efficiently. It has a 1000-pound capacity, and is engineered especially for easy maneuverability.



## The XT-300

This is a reliable three-wheel electric answer for a wide variety of jobs where maneuverability is critical. It provides a payload capability of up to 1000 pounds in its roomy 5.7-cubic foot, diamond-plated load bed.



## The PC4GX

E-Z-GO's gas-powered, 4-passenger personnel carrier is your best bet for moving staff and clients around resorts, hotels and worksites quickly, efficiently, and economically. Headlights, taillights, brake lights, horn, oil-injected engine are only a few of the standards.



## The PC4X

Where quiet is key, our efficient electric-powered personnel carrier is the answer, complete with an onboard charger, retractable AC cord and stainless steel battery racks.

For your resort, campus, office park or other maintenance needs, go durable, dependable E-Z-GO. The most advanced, most versatile line of utility vehicles in the world.



## EZGO TEXTRON

If you'd like more information on the complete line of E-Z-GO Turf Vehicles, fill out this coupon and mail to: Turf Products Mgr, E-Z-GO, P.O. Box 388, Marvin Griffin Road, Augusta, Georgia 30913-2699.

Name \_\_\_\_\_ Title \_\_\_\_\_

Company \_\_\_\_\_

Address \_\_\_\_\_

City \_\_\_\_\_ State \_\_\_\_\_ Zip \_\_\_\_\_

Phone \_\_\_\_\_



The entire Center complex consists of 19 buildings on 22 acres, including two roof gardens and the famous ice skating rink. The Exxon building, finished in 1971, is 54 stories, 750 feet tall.

Concerts and ethnic celebrations are held regularly in Exxon's park from April through September.

Turf doesn't grow in rocky Manhattan, so the park consists of paving and shrubs—mostly taxus, hollies, and rhododendrons—which don't live long either.

"We never plant a plant to grow," says Rockefeller Center's manager of gardens David Murbach.

Instead, Murbach's crew will change the flower beds every two weeks. That's a chore in itself. "I miss the long-term caring," Murbach says. "But it's a very exciting environment for horticulture."

Just replacing a shrub takes more teamwork than the Yankees executing a triple play. It often takes 45 minutes to get from one building to the next.

If the shrub on a roof garden is being replaced on a Saturday, security has to be notified first. Memos are sent out to notify everyone else. Furniture movers, elevator operators, and carpet cleaners are all in on the master plan.

Street trees, mostly honey locust, suffer injuries not mentioned in most tree manuals, like car door damage, and damage from hot dog vendors dumping steaming water. So Murbach's crew keeps the trees well fertilized.

Twenty trees are irrigated, but with four levels of plantings most of the Center is watered manually to avoid leakage.

Last summer, when the city banned watering, Murbach devised a scheme to water the trees. He added tanks to a special Cushman to recycle water condensation from the air conditioning system. The water was then held in a reservoir under the building and pumped to the surface for waterings.

### No landscaping?

Not much can be said about the landscaping at Manhattan-based Mobil and AT&T. There isn't any.

But both companies showcase the landscapes at division headquarters.

Mobil's Marketing and Refining headquarters (cover photo) in Fairfax, Va., and AT&T Communication headquarters in Basking Ridge, N.J., have both won awards.

E.I. Du Pont de Nemours (No. 7) in Wilmington, Del., also doesn't offer much in landscaping. Du Pont spokesman George Palmer describes the landscaping as "a patio between two buildings with a few bushes and trees...no grass."

### De-urbanizing Amoco

Standard Oil (No. 10), now referred to as Amoco, also has to fight the battle of beautifying an urban setting.

Langner & Associates handles the account. President Toby Langner says three- to four-man crews have worked the one-square-block job for six years.

The Chicago headquarters, like Exxon's, has no turf. Instead, *eunonymus colorata* (winter creeper) is used as ground cover.

Trees are primarily honey locust, shade master, and majestic varieties. Ornamentals include Washington Hawthorne; shrubs consist of cotoneaster, evergreen, and taxus.

---

## Just replacing a shrub takes more teamwork than the Yankees executing a triple play.

---

Langner's crew beautifies Amoco with seasonal displays of flowers and evergreen material. The crew takes care of pruning all plant material, some formally, others more naturally.

### Windy GM

General Motors (No. 2) of Detroit, also tries to make the most of its city setting. Vidosh Brothers Inc. has maintained the area since 1977.

The GM building, situated on one square block, features landscaped planters on the north, east, and west sides of the building. The largest landscaped areas are two pocket parks developed in 1977.

Vidosh's Pat Conroy, who oversees the site, says the largest park is about 120 by 200 feet, the smaller park about 60 by 60. With a 12-foot circular fountain highlighting the bigger park, summer concerts liven urban Detroit.

Conroy says one of the biggest problems of trees is windburn. Evergreens will "fry up," and pinoaks don't fare well either. Other plants are screened with burlap during the winter.

The most wind-tolerant trees are honey locust and ash. Sugar and Norway maples do well, but often suffer from heat scorch in June and July.

Conroy says they try to combat the problem with a regular watering and fertilizer program, but the combination of being near Lake St. Clair and tall buildings (which magnify the wind), makes it tough to avoid damage. "We're almost a zone within a zone," Conroy says.

Usually, a crew of three works on the GM site, but in mid-May Conroy brings in 7 to 10 people for a week of planting 12,000 to 15,000 annuals.

Geraniums are the main focal point. A combination of red begonias and yellow marigolds are used because they withstand the wind. Turf is a Kentucky bluegrass blend.

During the auto recession several years ago, Conroy saw his budget for new projects cut. Likewise, landscaping at the Ford Motor Co. (No. 4) was hurt by the recession.

### 'Up time' at Ford

Dave Wood, Ford's building services director, says the turf budget goes first in a recession. But Wood describes this as an "up time" when the company can implement projects set aside during the recession.

Ford is located on 100 acres, including roof gardens and an arboretum. The staff fluctuates from 12 to 20.

Ford has been using its own grounds staff for 30 years, and Wood has been with them from the beginning.

The only problem with that, Wood says, is training people in a union shop. "We had a problem keeping people," Wood says. Now, Ford sends the crew to school to get training in landscaping.

The crew takes care of spraying and mowing the Kentucky bluegrass blend. Wood believes in using dry fertilizer to maintain "grade A turf." Ford does contract out for spraying and pruning of shade trees.

The design of the site has changed over the years. "As years went on, we re-did the roof gardens," Wood says. "We changed things around after we found out what plants would survive. We learn as we go along."

Azaleas and rhododendrons are the mainstay of the roof gardens. Floral displays from tulips in the spring to mums in the fall brighten the gardens.

The major project now is updating and remodeling the arboretum, including the addition of a labeling system for the more than 95 varieties of native Michigan trees and shrubs. The project, complete with hard walking paths, will be completed in 1987 or 1988.

### GE's full care

General Electric (No. 9) is located on about 100 acres. The company awarded a three-year contract with a two-year option to Laflamme Services last November. The contract calls for full care of the facility including maintenance, snow removal, and installation.

President Edmond Laflamme says





# The Fusarium Blight Syndrome ..



Researchers have shown the Fusarium Blight Syndrome is comprised of three pathogens: necrotic ring spot, summer patch and fusarium leaf spot. Identification of these pathogens is difficult, even with microscopic examination.

Rubigan eliminates the need to identify these pathogens. University researchers have documented Rubigan's effectiveness on all three of the pathogens which make up the Fusarium Blight Syndrome. In fact, Rubigan is the *only* product labeled for their control. Take the mystery out of the Fusarium Blight Syndrome... use Rubigan.

Rubigan is also the best value for the

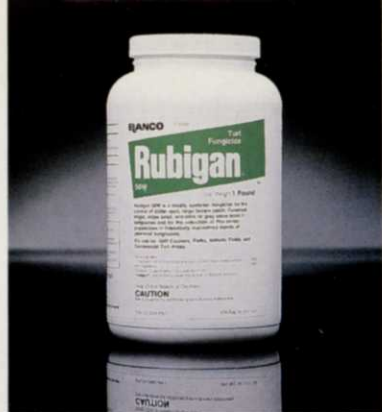
control of dollar spot, and effectively controls snow mold, copper spot, red thread and stripe smut. For large brown patch, Rubigan is recommended in tank mix with Daconil 2787®.

Rubigan... the best value your money can buy.

For more information, call your distributor or write:

Elanco Products Company  
A Division of Eli Lilly and Company  
Dept. E-455, Indianapolis, IN 46285, U.S.A.

Rubigan®—(fenarimol, Elanco Products Company)  
Daconil 2787®—(chlorothalonil, SDS Biotech Corporation)



# Controlled .. By Rubigan®

**Fusarium leaf spot.**



**Necrotic ring spot.**



**Summer patch.**





the previous landscape company worked on the site from the time it opened 11 years ago. One reason why Laflamme Services won the bid is that all employees are college-educated, including an arborist and turf experts.

The site has about 25 acres of turf, primarily blends of fine fescue and ryegrass.

Because the fescue requires less water and fertilizer, Laflamme's crew is gradually killing off sections with Roundup and reseeding with fine fescue.

Trees include a variety of maples, oaks, and birch. Hawthornes are used as ornamentals. Shrubbery, primarily junipers, is formally cut. Flower usage is kept at a minimum, although begonias are used for color, mostly because they are low maintenance.

The entire property is irrigated, with a drip system used in the flower and shrub beds. Laflamme prefers to

use reel mowers rather than rotary.

"A rotary machine tears the grass," he says. "A reel slices for a finer look. It's healthier for the lawn to cut rather than tear. It gives a better look and the blade isn't damaged as much."

Texaco (No. 5) in Harrison, N.Y., is located on 117 acres. That consists of 39 acres of fine lawn (bluegrass mix), 19 acres of meadow, and almost five acres of beds. Only 10 acres of the property is irrigated.

NATRL Plants and Lands Management Co., Ltd. installed the site in 1976 and has maintained it ever since.

Three levels of interior courtyards must be hand-weeded because many executive offices face the courtyards.

The most difficult part to maintain is the four acres located over the two story parking garage. The area has only 12 inches of soil, which must be irrigated since it dries out quickly. A

planter holds a Japanese maple and junipers.

Shrubs include taxus hedge, azaleas and rhododendrons. Oak, maples, cherries, pears and dogwoods are among the trees used.

One popular area is the two miles of walking trails which wind through the meadow. Ribbons of shrubs separate the lawn from the meadow area.

Those who don't like hiking can work up a sweat on the company's tennis courts.

General superintendent Richard Settgest uses a crew of 10 to 15, depending on the project. To save on labor, he often combines fertilizers and weed controllers in the same application.

Although each crews' techniques vary depending on the company, most would agree that landscaping is crucial for a strong corporate image. **WT&T**

## Detroit bands together for New Center area

General Motors has taken its interest in landscaping a step beyond other Fortune 500 companies. Besides maintaining its own property, the company has donated millions of dollars toward renovation of the 50-block inner-city area of Detroit surrounding its headquarters.

GM isn't alone in its efforts. Other major Detroit corporations, most notably, Burroughs Corporation, Henry Ford Hospital and Trizec Properties, have all contributed toward the multi-million dollar project.

It's become known as the New Center Area.

The New Center Area is 500 acres (5.2 million sq. ft. is office space). It is home to 3,000 people, while more than 27,000 work there.

### Teamwork

It began selfishly, perhaps. In the early 1970s, each corporation was involved with beautifying its own property. Burroughs completed its new \$30 million complex. At the same time, Henry Ford Hospital began a 10-year \$150 million expansion and development program on the hospital's New Center campus. GM followed suit by renovating its headquarters with \$35 million in improvements.

In 1977, GM constructed its two pocket parks adjacent to the GM building as part of a \$1.25 million program. According to Pat Conroy, project manager for Vidosh Brothers, the materials located in the pocket parks originally came from the GM Technical Center in Warren, Mich.

GM project coordinator Barbara Spreitzer says that after the parks were added, the company began looking for new ways to "halt deterioration" of the area. GM created the Detroit Revitalization Committee to make recommendations for city improvements. The committee decided the best way to revitalize the area was to first renovate the surrounding neighborhoods.

In 1978, GM began working toward that goal. A subsidiary of GM, New Center Community Corporation, and 14-other area businesses funded a multi-million dollar neighborhood revitalization project. Federal

grants from the Health and Urban Development office, including a \$2.6 million Urban Development Action Grant (UDAG) and a \$1 million Community Development Block Grant helped fund the project.

To date, 45 single-family homes and 34 condominium units have been renovated and sold. The housing area has been named the New Center Commons.

### Public/private

The New Center Area Council was organized to work with its 150 corporate members in coordinating the overall development plans. The Council's director of special projects Mary Hebert calls the New Center Area "a unique public/private partnership."

The Council, she says, serves as "the maintenance arm of the projects." One of NCAC's responsibility is to contract with Vidosh Brothers for landscaping work in



The New Center area in Detroit, Mich.

continued on page 22



**T**O PYTHIUM THIS LOOKS LIKE THE



**There's one unwanted guest that can eat away at the healthiest turf and cause widespread damage overnight. Pythium.**

In rainy, damp or humid weather, Pythium attacks greens and fairways alike, causing blight, damping off, disappointment and expense.

Only Subdue® provides the dual action you need to prevent and control the damage of

Pythium, and downy mildew (yellow tuft) as well. First, Subdue stops disease on contact. Then it acts systemically, penetrating the turf for a long lasting, residual defense. In fact, just one or two fluid ounces per 1,000 square feet lasts up