

Rubigan is the best value for dollar spot, and it effectively controls fusarium blight, snow mold, stripe smut and is active on large brown patch when used with a Daconil 2787® tank mix.

Four years of field use show excellent control of dollar spot—even resistant dollar spot, at only 10-14 cents per 1,000 square feet per day of control.

For gradual reduction of *Poa annua* use cumulative rates of 2-3 oz./1,000 square feet

and proper management practices. With Rubigan, you can maintain disease-free *Poa* or gradually reduce it.

For more information, call your distributor or write:

Elanco Products Company  
A Division of Eli Lilly and Company  
Dept. E-455, Indianapolis, IN 46285, U.S.A.

Rubigan®—(fenarimol, Elanco Products Company)  
Daconil 2787®—(chlorothalonil, SDS Biotech Corporation)

Circle No. 122 on Reader Inquiry Card



# Rubigan® controls dollar spot on greens, tees and fairways.

And you get more for your dollar.



## CLEANING UP FIRESTONE CC'S WAR ZONE

Back in September, Firestone Country Club's South Course looked like a war zone. Mounds of dirt, craters, and brown turf (superintendent Brian Mabie turned off the irrigation system when work began immediately after last year's tourney) violated the South Course.

But by this spring, all will be a memory, provided Mother Nature smiles. By early June, the 300 or so members will be back on the course, encountering several minor changes.

The greens now have a drainage system. Several greens were resloped and number 17's contour was severely altered. Tifton, Ga., resident and greens shaper emeritus Ernest Jones was called in for the job.

Jones brought the greens to specs suggested by Golforce Inc., a Jack Nicklaus company. Golforce architect Tom Pearson spent several days at Firestone consulting with Mabie and suggesting workable improvements.

Mabie has great respect for Pearson. "It was a tough thing Tom did—we've tried to improve the course without losing the characteristics that make it Firestone," he says.

Number 5, previously a 234-yard par three, now measures 200 yards, a more realistic distance for a par three, says Mabie.

Both the pond and fairway at number 16 (625-yard, par five), the famed "Monster," are broader. The wider fairway, says Mabie, is a realistic solution to a minor problem. The old fairway was too narrow, he says.

The finishing hole, number 18 (464-yard par four), has a new green measuring half of what it was, providing more spectator space.

The "new" South Course provides improved spectator vantage points also. Spectator mounds add to what was previously a poor course to watch a golf tournament.

From those mounds, fans can view a general rebunkering throughout the course.

—Ken Kuhajda

Top, workers install drainage pipes on the South Course. Below, contractor Jim Zinni (left) and greens shaper Ernest Jones.





# The City That Works Works With Woods

There's a lot of grass to mow in the Windy City, and Chicago's Park District uses rugged Woods mowers to help them cover a lot of ground.

But Woods mowers aren't designed just for large areas. In fact, we make mowers that cut swaths from 3 1/2 feet all the way up to 20 feet. Plus, we offer more rearmount and undermount models than any other manufacturer of tractor-powered mowers. New tractors or old, domestic or imported, Woods has a mower to fit the tractor and the job.

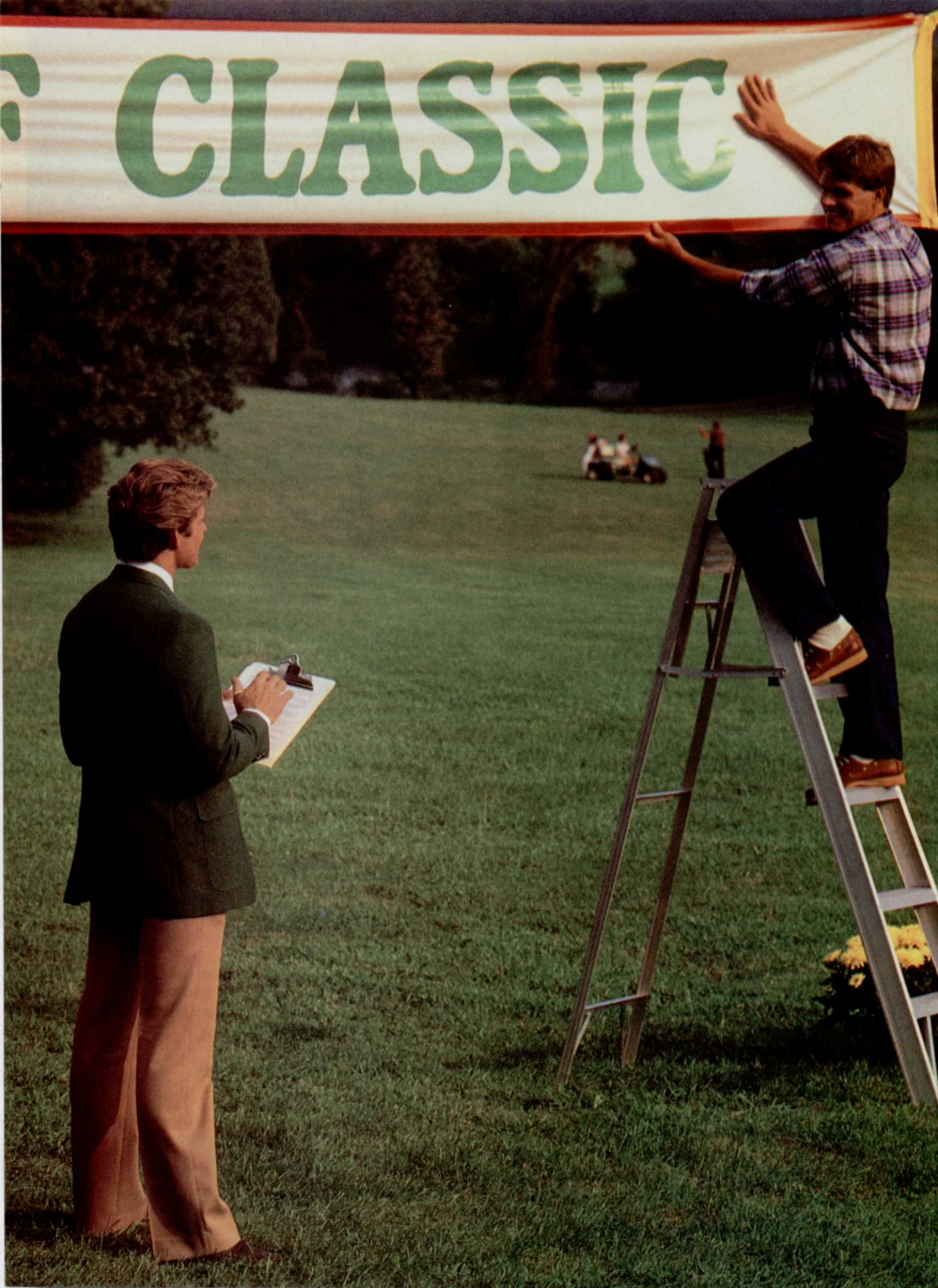
Send for complete specifications on the dependable line of Woods mowers today.

*for 34 years the name to remember for quality and performance*



Division of Hesston Corporation  
Oregon, Illinois 61061

Circle No. 179 on Reader Inquiry Card



CLASSIC

# The biggest tournament of the year is only days away. Who needs spurge?

Pesky, hard-to-control weeds like spurge, oxalis or chickweed can be especially embarrassing at a time like this.

Happily, WEEDONE® brand DPC broadleaf herbicide controls those and more than 65 other tough turf weeds. With control that's quick, effective, dependable.

## Designed for turf

WEEDONE® brand DPC is a powerful combination of both 2,4-D and dichlorprop in one convenient turf herbicide with the weed-killing performance of more expensive, three-way mixes.

And WEEDONE® brand DPC herbicide won't harm most grass species.

So for golf courses, lawns, parks, athletic fields and other valuable turf areas, WEEDONE® brand DPC could be the only broadleaf herbicide you need.

That simplifies your

inventory and handling. Not to mention budgeting.

WEEDONE® brand DPC is approved for season-long use. So you can spray any time from early spring through late fall. Whenever weeds are actively growing.

WEEDONE® brand DPC herbicide mixes easily with most liquid fertilizers for economical one-trip spraying. Another big plus for turf professionals.

## The first name in herbicides

At Union Carbide, we were the first to develop the phenoxy herbicide chemistry turf pros have depended on for nearly 40 years. And, with formulations like WEEDONE® brand DPC we're still working to help make turf weeds the least of your worries.

This year, ask your turf chemical supplier for WEEDONE® brand DPC broadleaf herbicide. And enjoy the tournament.



From the turf care group at Union Carbide

Union Carbide Agricultural Products Company, Inc. Box 12014 T.W. Alexander Drive, Research Triangle Park, N.C. 27709.

WEEDONE® is a registered trademark of Union Carbide Agricultural Products Co., Inc. As with any insecticide or herbicide, always read and follow label instructions.

©1984 Union Carbide Agricultural Products Company, Inc.

Circle No. 177 on Reader Inquiry Card



# SUPERINTENDENTS DIFFER IN WILT TREATMENTS

Can you imagine what would happen if bacterial wilt began attacking the Penncross and Penneagle bentgrasses?

Nasty thought, isn't it? Yet there have been unconfirmed reports that it's been found on Penncross, Penneagle, Seaside, and bermudagrass.

Dr. D.L. Roberts of Michigan State University, who along with colleague Dr. Joe Vargas discovered

disease. The treatments varied and for good reason. Firestone Country Club's South Course (Akron, Ohio), and Hazeltine National Golf Course (Chaska, Minn.) spent the spring and summer devising a game plan to combat the wilt and began the long recovery process in the fall.

### Firestone

In 1984, Firestone's greens were sluggish, allowing no percolation.

remembers Padgett.

Padgett thought that was impossible. The wilt had been reported only on the C-15.

"Jack came back to me on Sunday and said, 'Don, I'm almost sure that's it. I've been spending more time looking at the greens than playing golf.' Well, we sent a greens sample to Dr. (Philip) Larsen at Ohio State," says Padgett.

Dr. Larsen, now at the University of Minnesota, identified the disease and Michigan State University's Dr. D.L. Roberts confirmed.

Firestone *did* have the wilt. The decision? "We decided that, to maintain a world-class facility, a major renovation was needed—not a minor overseeding," says Padgett.

Firestone would wait it out, "baby" the greens through the summer of 1985, and begin work immediately after the World Series of Golf (Aug. 22-26).

Course superintendent Brian Mabie and crew controlled the disease with the antibiotic Mycoshield, applying at night because of the chemical's phytotoxicity. They upped the nitrogen application rate, raised the cutting height to 3/16-inch from 1/8, and made weekly applications of iron with the normal fungicide.

On August 26, the practice greens were stripped. The other greens followed the next day, the same day coring began. Mabie says it took 11 days to core all greens to the depth of 16 inches.

At the same time, drainage systems were built for all greens. By Sept. 18, all drainage systems were in and all mix (85 percent sand, 15 percent humus) was in place.

The crew seeded (Penncross bentgrass) from Sept. 27-30, took a short breather, and prayed that Mother Nature be kind.

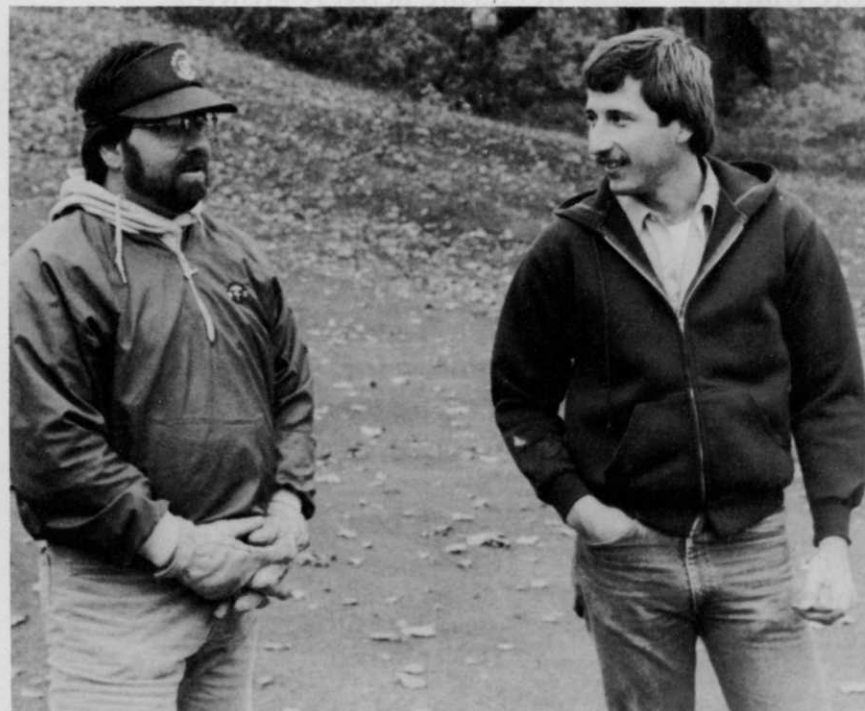
She was. The greens, some reshaped and recontoured, took and were mowed on Oct. 28.

"I think the course will be in the best shape it's been in since the 60s," says Padgett.

### Hazeltine

Superintendent Chris Hague noticed a problem with his C-15 Toronto bentgrass greens in May 1985. "I saw something that looked like fertilizer pellet burns," he recalls. "Four greens were particularly slow to come around."

*continued on page 38*



Hazeltine superintendent Chris Hague (left) and Charles Taylor of the Hendricks and Dail Co. of Greenville, N.C. Hendricks and Dail applied methyl bromide to the Hazeltine course.

and initially researched the disease, says the wilt will eventually attack other turfgrasses including the Kentucky bluegrasses, ryegrasses, and fescues.

Prior to 1984, the wilt was reported on only the Toronto creeping bentgrasses. It's now been confirmed on annual bluegrass and *Nimisia* creeping bentgrass.

The problem previously associated with the Toronto at Butler National near Chicago is now a problem for all courses.

WEEDS TREES & TURF visited two infected courses last fall to find out how each superintendent treated the

"They just never came around," general manager Don Padgett II says. "Anytime we disturbed the turf at all they regressed."

Padgett knew the greens were sub-standard by professional standards yet he and Firestone officials were at a loss to explain the problem. Bacterial wilt was ruled out: the greens were seeded with *Nimisia* bent, not the C-15 Toronto.

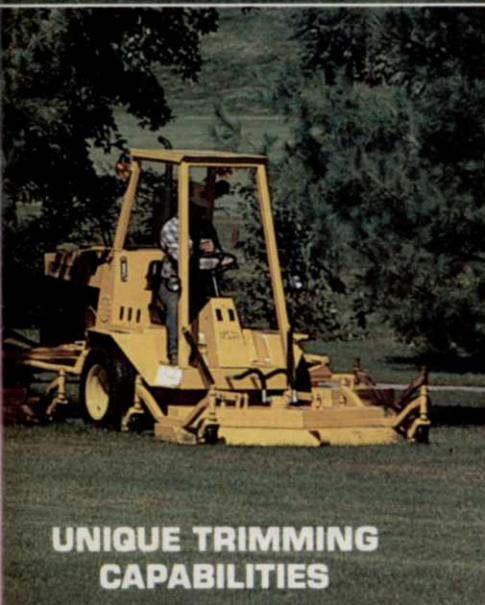
Then came the 1984 World Series of Golf. Enter the "Golden Bear."

"On tournament Saturday, Jack (Nicklaus) came to me and said he thought we had the bacterial decline that they had at Muirfield,"

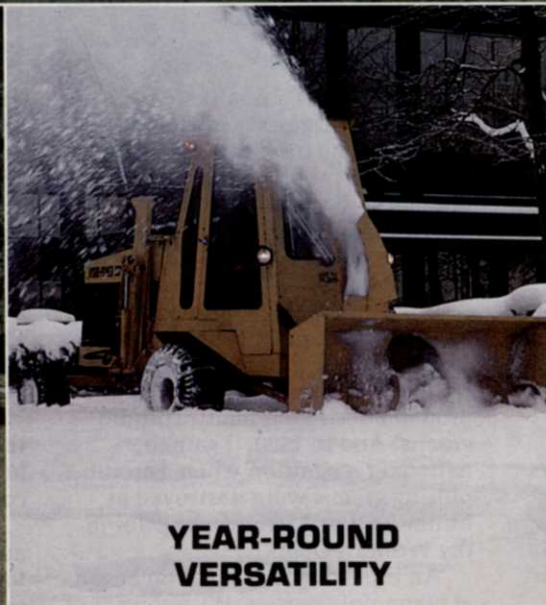
# CUT YOUR TURF PROBLEMS DOWN TO SIZE



with **HYDRO-POWER 180**



**UNIQUE TRIMMING  
CAPABILITIES**



**YEAR-ROUND  
VERSATILITY**



**EASY-FOLDING  
CUTTING UNITS FOR  
TRANSPORT**

Your search for a high capacity mower encompassing a one man operation is now concluded. The Hydro-Power 180 with its 15 foot hydraulically driven rotary mower has a mowing capacity of up to 11 acres an hour while incorporating rear wheel steering for maximum maneuverability. Cutting units are designed for maximum floatation and may be used individually or in any combination of the three.

A foot pedal controlled hydrostatic transmission affords variable mowing speeds as well as transport speed to insure maximum travel time between the job sites. The Hydro-Power 180 offers year-round versatility with a 2-stage, 73" snow blower and heated cab.

Manufactured by



18155 Edison Avenue  
Chesterfield, Mo. 6301



The greens of numbers 3 through 6, located in slightly shielded areas, have poor drainage capabilities, he says.

The C-15, original turf at Hazeltine, had held up well since the course was built 23 years ago.

The problem spread. "By process of elimination we finally determined that it was bacterial wilt," says Hague. "You hate to admit it because there's only two things you can do—fumigate and resod or fumigate and reseed."

(The other alternative is to tear out all greens to a sufficient depth, as Firestone chose to do.)

Drs. Vargas and Roberts at Michigan State confirmed the disease in late June. This information was relayed to the greens chairman.

Membership was informed on July 8 by bulletins explaining the history of bacterial wilt. "The bulletins helped people understand that we were not alone, that this wasn't a first incidence," says Hague.

On July 17, Dr. Vargas and a USGA greens section official attended an open membership meeting to better explain the problem. The members, somewhat angry over the problem, "really eased off" after the meeting, says Hague. "From then on, it was 'how are we going to take care of this?'"

They decided not to use a bactericide for expense reasons. "Luckily we had the kind of summer where all greens stayed very puttable," says Hague. Nine different options were hammered out.

Hague and Hazeltine took a novel approach—they chose to fumigate in the fall and resod Penncross bentgrass in the spring. It's a technique that has not been tried previously, claims Hague.

There was one catch—members decided not to give up the course until Sept. 23! In Minnesota, it snows in early to mid-October. Hague and crew were faced with a race against Mother Nature.

They won, sort of.

The Hendricks and Dail Co., North Carolina-based fumigators, handled the methyl bromide (hot gas) treatment. Methyl bromide sterilizes the soil and must be applied at soil temperatures of over 50 degrees Fahrenheit. The gas is forced into the soil, covered by tightly-secured plastic to prevent leakage and ensure penetration.

Half the greens were fumigated the week of Oct. 1 and three others later in October. The remaining six holes (numbers 11, 13, 14, 15, 16, 17) will get the gas in the spring.

Hague says he hopes to resod the front nine the first two weeks of April and the back nine as

soon as possible.

Ideally, golfers will be playing the front nine by early June and the back by the 15th.

"If we get a break at all, we'll get the course back to snuff by June 15," says Hague.

—Ken Kuhajda

## RECOGNIZING BACTERIAL WILT

by David Roberts and Dr. Joseph Vargas Jr.

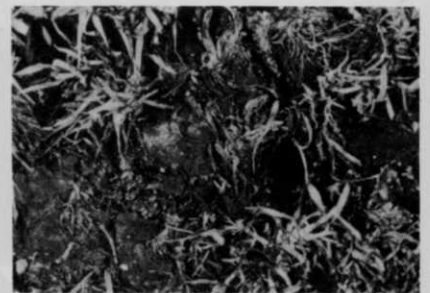


Fig. 1 left: bacterial wilt under an electron microscope

Fig. 2 above: turfgrass affected by bacterial wilt

Bacterial wilt is a relatively new disease of turfgrasses in North America. The disease was originally called C-15 problem and C-15 decline, a devastating and unresolved occurrence on Toronto creeping bentgrass (C-15) for more than a decade.

Since the 1930s, Toronto creeping bentgrass was propagated on golf course putting greens throughout the Midwest. During the 1970s, the C-15 problem destroyed many Toronto greens. And in 1980, it gained national recognition when Toronto putting greens were destroyed at Butler National two weeks prior to the Western Open.

An intensive investigation began at many universities. With the aid of Michigan State University's electron microscope, bacteria were associated with the xylem tissues of diseased Toronto creeping bentgrass (Fig. 1). Xylem vessels of plants are responsible for the uptake of water

and nutrients. The plugging of these xylem vessels by large numbers of bacteria naturally resulted in rapid wilting and death of turfgrass plants. The disease was subsequently named "bacterial wilt" of Toronto creeping bentgrass.

### Significance

Prior to bacterial wilt on Toronto, no bacterial wilts of turfgrasses were previously known in North America. Using various analytical techniques, the bacterial wilt pathogen has now been characterized as *Xanthomonas campestris* pv. *graminis*.

This bacterium measures approximately  $1/25,000$ th of an inch long and  $1/50,000$ th of an inch wide. It reproduces every four to six hours.

Until it was isolated from Toronto creeping bentgrass in the United States, this bacterium was only found in Europe. Originally discovered in Switzerland in 1975, the bacterium has now spread to the British Isles, Netherlands, Germany, France, Norway, Denmark and New Zealand.

We presume that the bacterium was introduced from Europe to the United States, where it has virtually

David Roberts is academic specialist and Dr. Joe Vargas is professor in the Department of Botany and Plant Pathology at Michigan State University.



# "Great golf starts with great maintenance."

It applies to your course just as it does to the courses Jack Nicklaus has designed.

Jack Nicklaus may never play your course, but we can help you put your turfgrass in just the condition he loves. Jack's been a spokesman for PAR EX® fertilizers with IBDU® for many years. PAR EX fertilizers are used on Muirfield Village Golf Club, his home course, as well as most of the other courses he has designed.

Why do PAR EX fertilizers with IBDU produce such extraordinary results? Here are several key reasons:

1. IBDU, by itself, is 90% WIN which makes it extremely safe for turfgrass application.
2. IBDU, by itself, is 100% available to turfgrass in one growing season.
3. Availability of nitrogen is not dependent on soil temperature and microbial activity—feeds sooner in the spring, more evenly in the summer, and later in the fall.

To sum up, PAR EX fertilizers with IBDU are safe. The response is controlled without regard to weather conditions. The efficiency and performance of PAR EX is proven.

Contact a PAR EX distributor and let him recommend a PAR EX program for you.

*"My design and maintenance people rely on PAR EX with IBDU. We strongly recommend it."*

*Jack Nicklaus*

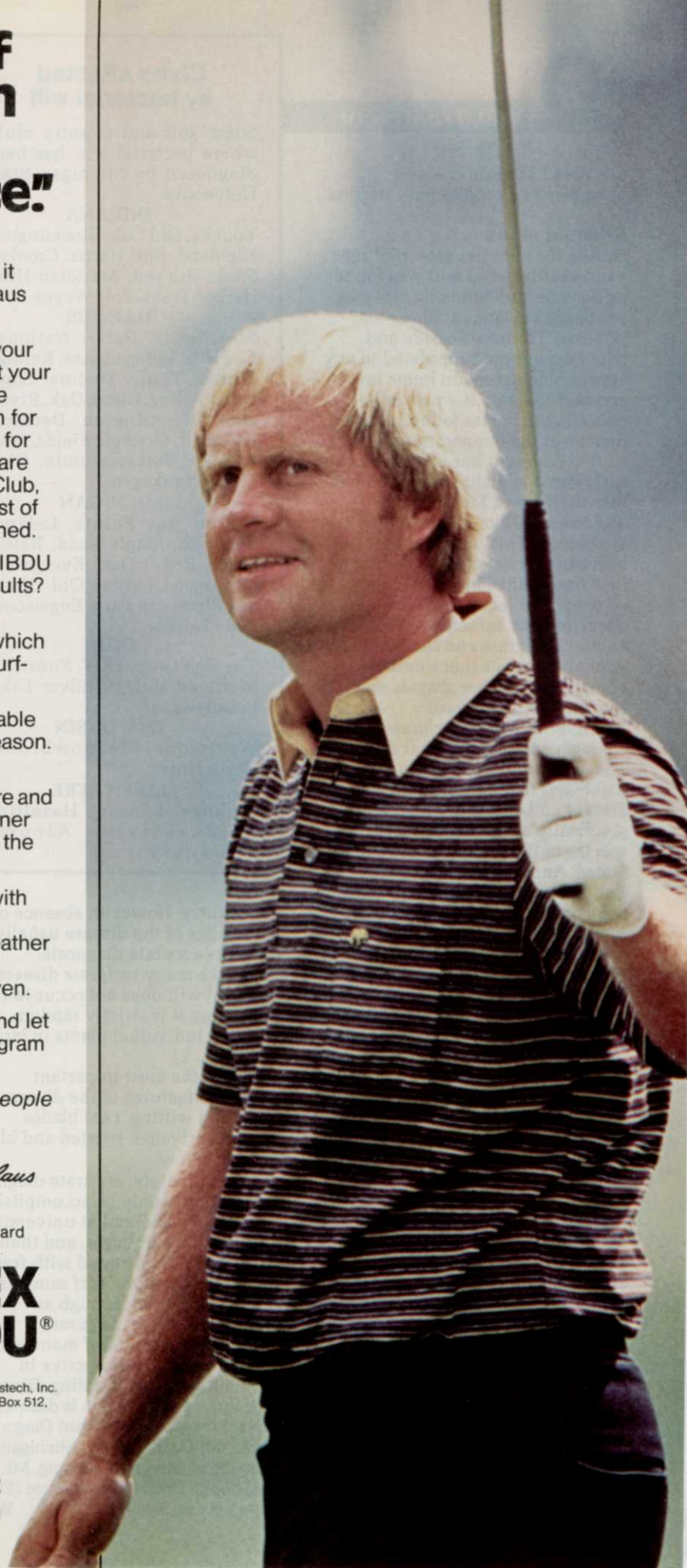
Circle No. 124 on Reader Inquiry Card

## PAR EX with IBDU®

PAR EX and IBDU are products of Estech, Inc. Professional Products Division, P.O. Box 512, Winter Haven, FL 33882-0512.

PAR EX and IBDU are registered trademarks of Estech, Inc.

**See Us At Booth #2324 at  
the GCSAA Conference in  
San Francisco.**





## Wilt Treatment

destroyed Toronto creeping bentgrass as a propagated turfgrass.

### Affected areas

During the summer season of 1983 and 1984, bacterial wilt was found on Seaside and Nimisilia creeping bentgrass and annual bluegrass. Whereas Toronto, Seaside and Nimisilia are not propagated to any appreciable extent on home lawns, annual bluegrass is a naturally-occurring turfgrass found in most regions of the temperate zone.

Bacterial wilt has been found on turfgrasses in eight states: Indiana, Illinois, Kansas, Michigan, Minnesota, Ohio, Pennsylvania and Wisconsin. This indicates that the bacterium is not only spreading to new host plants, but also to new geographical locations. The occurrence of bacterial wilt on annual bluegrass and the bentgrasses strongly suggests that Kentucky bluegrass and other grasses may also succumb to the disease.

Bacterial wilt of turfgrasses is analogous to several other diseases. The accidental introduction of pathogens that cause Dutch Elm disease and chestnut blight has practically eliminated American species of these trees in the United States. Another pathogen, *Xanthomonas campestris* pv. *citri*, the cause of Citrus canker in the southern United States, is closely related to *Xanthomonas campestris* pv. *graminis*, the cause of bacterial wilt of turfgrasses.

Millions of dollars, along with very strict quarantines, eliminate the citrus canker bacterium whenever and wherever it is detected. Unfortunately, the turfgrass industry is not sufficiently organized to mount this kind of action. So bacterial wilt continues to spread to additional states and new varieties of turfgrass.

### Cures?

Even though bacterial wilt can be suppressed with the antibiotic oxytetracycline, the chemical is both expensive and may not be effective for a long duration as resistance by the bacterium is highly probable. Except for fumigation, followed by seeding and sodding with alternative turfgrasses, no other control measures are feasible.

### Diagnosis

Bacterial wilt undoubtedly occurs on other turfgrasses in many regions of

## Clubs affected by bacterial wilt

Some golf and country clubs where bacterial wilt has been diagnosed by Michigan State University:

### INDIANA

Youche, Old Oak, Bloomington, Highland, Phil Harris, Crooked Stick, Hilcrest, Meridian Hills, Harbor Trees, Fort Wayne

### ILLINOIS

St. Charles, Butler National, Cog Hill, Village Links, Kellogg, Timber Trails, Medina, Edgewood Valley, Glenn Oak, Riverside, Bloomington, Decatur, Park Hill, Olympic Fields, Midlothian, Pottawatomie, Glen Flora, Waukegan

### MICHIGAN

Alpine, Bay Pointe, Leland, Goodrich, Maple Lane, Raisin River, Royal Oak, Evergreen, Birchwood Farms, Old Channel, Plymouth Park, Edgewood, Plum Hollow

### OHIO

The Golf Club, TRW, Firestone, Muirfield Village, Silver Lake, Brandywine

### WISCONSIN

Westmoor, Meadowbrook, North Hills

### ELSEWHERE

Milburn (Kansas), Hazeltine (Minnesota), Alcoma (Pennsylvania)

the country. However, absence of knowledge of the disease usually prevents accurate diagnosis.

Unlike many turfgrass diseases, bacterial wilt does not occur in rings or patches; it is strictly random, affecting individual plants in large areas (Fig. 2).

One of the most important diagnostic features of the disease is a very rapid wilting. Leaf blades become shriveled, twisted and blue-green in color.

Unfortunately, accurate diagnosis can currently only be accomplished by trained personnel at university diagnostic laboratories, and then it can only be determined with fresh samples. Therefore, turf samples should be mailed through an overnight service. Accurate diagnosis is essential if management strategies are to be effective in combating this devastating disease.

If further information is desired, contact the authors at Plant Diagnostic Clinic, 141 Plant Biology, Michigan State University, East Lansing, MI, 48824-1312. Phone numbers are (517) 355-4536 and 353-9082.

WT&T

# FREE



**\$151.15 retail value;** 4 gallon capacity; pressure regulator; two nozzle spray boom.

## Solo Backpack Sprayer

with 50 gallon purchase of Surflan® AS herbicide.

# FREE



**\$34.95 retail value;** 2.5 gallon capacity; rugged hand pump.

## Solo Hanjet Sprayer

with 15 gallon purchase of Surflan AS herbicide.

Now you've got more money-saving reasons than ever to keep weeds out of ornamentals, shrubs and trees with Surflan. Free sprayers available with either Surflan gallons or quarts purchased by August 31, 1986. Contact your Elanco distributor now for details, order form.



Elanco Products Company  
A Division of Eli Lilly and Company  
Dept. E-455, Indianapolis, IN 46285, U.S.A.  
Surflan®—(oryzalin, Elanco Products Company)