



OPEN DOORS AND CLOSE SALES with WEEDS TREES & TURF

Attention Lawn Care Companies, Distributors, Lawn and Garden Retailers and Seed Marketers:

From your own experience, you know that when the typical homeowner looks out of a window of his 15-year-old or older home, he sees an aging, dull lawn without a single improved variety of grass in it. What he would like to see is what he's noticed on newer lawns — greener, healthier, finer-bladed grass — but he doesn't have the slightest idea of how to achieve it.

You Can Show Him How... Profitably!

The publishers of WEEDS TREES & TURF are providing you with a unique opportunity to inexpensively educate homeowners on a personal level about the availability of high-quality grass seed and the ease of application. The result is greener lawns, more satisfied customers, and higher profits for you!

This inexpensive, easy-to-read "how to" promotion can be used as a self-mailer or door hanger on those home lawns you know need reseeding. It explains:

- 1. Why tired lawns don't measure up to today's standards.**
- 2. How easy it is to cost-efficiently improve a lawn.**
- 3. What facts to look for on the seed bag label to insure compatibility and quality.**

Order Your FREE SAMPLES Today!

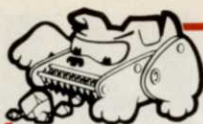
See for yourself how useful this door hanger/mailer can be to your business without any obligation. Simply circle the appropriate number on the Reader Service Card bound in this issue of WEEDS TREES & TURF. We'll send you your free samples of this high-impact, customer-oriented promotion along with complete ordering information without delay.

WEEDS TREES & TURF

HB A HARCOURT BRACE JOVANOVICH PUBLICATION

ABP **VBPA**

Bob Earley • 7500 Old Oak Boulevard, Cleveland, OH 44130 • (216) 243-8100



ROCKHOUND TEACHES THE ABC'S OF GROUND PREPARATION

A SERIES ROCKHOUND



Dumping

Skid Steer Mount

(Hydraulic)

3 Point Mount

B SERIES ROCKHOUND



Open bottom—PTO Drive. Rocks are raked to a convenient windrow for later pickup.

COST EFFECTIVE ROCKHOUNDS Rake and collect rocks and surface debris, leaving the soil in a fluffy, level, seed-bed quality condition.

It does not cost to own a Rockhound . . . IT PAYS!

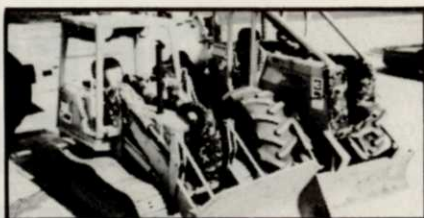
See Us In Booth 2915-16 At GCSAA

1-800-426-5615

KEM ENTERPRISES, INC. 2309-A So. Tacoma Way, Tacoma, WA 98409

Circle No. 135 on Reader Inquiry Card

diesel-operated equipment with blower fans. It comes in all sizes for different pieces of equipment. And it's made of durable, water-resistant material.



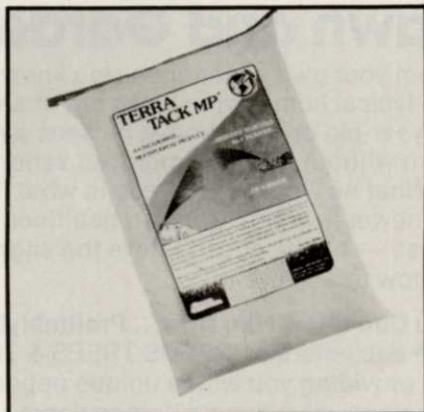
Circle No. 192 on Reader Inquiry Card

Multi-purpose binder tackifier introduced

Grass Growers Inc. says Terra Tack MP can be used as an overspray for straw or hay. It can also be used in straw mulchers for simultaneous applications.

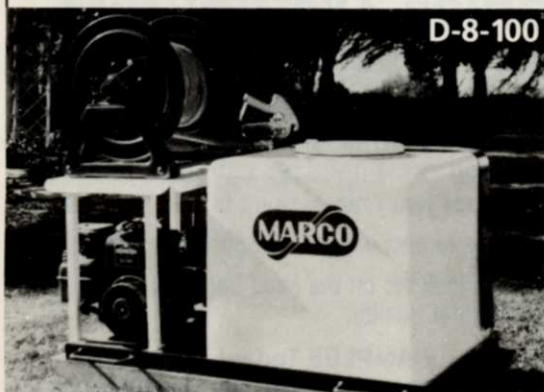
Terra Tack MP is a blend of naturally occurring organic/inorganic materials. It is formulated with a hydrophylic polymer which provides optimum water absorption/cycling capacity.

Grass Growers Inc. says four years of research and testing went into development of the multi-purpose tackifier/binder.



Circle No. 193 on Reader Inquiry Card

MARCO: A Lot of Sprayer in a Portable Unit!



D-8-100

Make applications of herbicides, pesticides and fertilizer quick and easy with a MARCO sprayer! MARCO's Prime Line of more than 20 models of spraying equipment features one-piece, hand-laid and baffled fiberglass tanks in custom sizes - each with a 20-year warranty!

Call or write for a brochure illustrating our complete line. We can custom build to fit your needs, too.

Contact MARCO today - and put our fully professional, fully affordable sprayers to work for you!

Here's a model that will meet the majority of your requirements:

Model D-8-100

Specifications

Pump Cap. 14 GPM
Pressure 550 psi
Power 8HP Briggs & Stratton Engine
Tank Cap. 100 up to 400 gallons

Options

Turf Trailer Mounting
Belt-Driven Mechanical Agitation
Fill Well Basket Filter
Canopy and Hose Reel to Hold 200' of 1/2" hose

Standard Agitation Jet
Pressure Control Unit ... 15 GPM
Standard Drive

Dry Booms in Varying Lengths
Boom Jet - Pistol Grip Gun
52" or 72" Hand Boom and Drift Skirt

Circle No. 141 on Reader Inquiry Card



DIVISION OF LLO-MAR MFG. CO.

(800) 527-1574
In Oklahoma, call (405) 362-3162
210 S. Main St.
Newkirk, OK 74647

SEE MARCO'S NEW 1986 PRODUCTS AT BOOTH 940, GCSAA!

Loading ramp perfect for light equipment

An all-purpose ramp for loading small equipment and supplies joins the Melcher Mfg. product line.

The Lite-Loader ramp is made of all-weather, zinc-plated steel tubing with a fiberglass surface. The 30-inch-

Trenchmaster



Trenchmaster takes the sweat out of burying water pipe, cable, and small gas lines; saves time and money making trenching a very quick and easy one man operation. Trenchmaster will dig 5 - 25 feet per minute leaving a trench 1½" - 2" wide, 7" deep, with all the dirt piled neatly beside the trench for ease of refilling; giving the most professional look possible, with virtually no damage to the turf.

Trenchmaster can be easily loaded by one man and features a heavy-duty industrial-commercial series Briggs and Stratton 5 hp. motor, replacable steel alloy tips, all steel construction, and is designed for maximum use with minimum maintenance.



Interested Dealers
or Distributors

CALL:

205/795-6603

ROUTE 3 - OZARK, ALABAMA - (205) 795-6603

Circle No. 108 on Reader Inquiry Card

wide single ramp has a 1,000-pound capacity and weighs just 86 pounds. Dual ramps handle loads up to 1,500 pounds, yet each half weighs only 47 pounds.



The 7'11" Lite-Loader is adequate for loading levels up to 32 inches off the ground, and it fits easily into the back of a standard pick-up truck. **Circle No. 194 on Reader Service Card**

Arsenal herbicide controls vegetation

Arsenal herbicide provides total vegetation control, according to its manufacturer, Cyanamid Agricultural Division.

When Arsenal enters plants through foliage and roots, it seeks out and accumulates in the growing points, inhibiting plant production



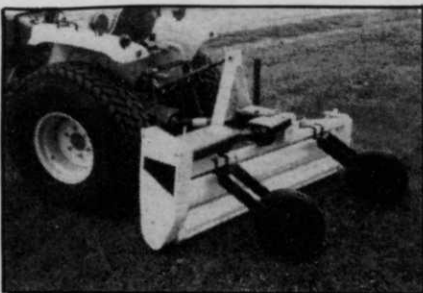
of three vital amino acids. Even though measurable growth of treated plants ceases within hours, the brown-out process is slow.

Arsenal can be used on rights-of-way, non-irrigated ditchbanks, fence rows, and storage areas. Depending on climate, it can last up to one year.

Circle No. 195 on Reader Service Card

Glenmac/Harley's new smaller power rake

Glenmac/Harley announces a new reduced version of its Harley landscape power rake.



The new five-foot double-roller model works just like its established eight-foot, three-point hitch cousin. The new Model TR35 pulverizes soil for a seed bed while it rakes rock, roots, and trash into a windrow. It weighs just one-half the bigger TR38 and fits 15-hp tractors and up.

Circle No. 197 on Reader Inquiry Card

Hose reel built for applicators

Aero-Motive introduces a redesigned hose reel for liquid fertilizer and weed control chemical applicators. The Lawn Care Reel comes in three sizes to accommodate 300, 400, or 500 feet of 1/2-inch inside diameter spray hose.

The unit features an externally-mounted V-belt drive plus an external swing joint that uses a readily available O-ring seal. Featured also is a special gear box and a hand-operated clutch.

The Lawn Care Reel includes a 12-

**MODEL 12
P.T.O. CHIPPER**

**PORTABLE
DEPENDABLE
ECONOMICAL**

- Less than 1/2 the price of equal capacity chippers
- Fits most tractors from 25 to 100 H.P.
- Mulch-type chip. 5 to 6" branch dia. capacity
- Patented safety throw-out — stops feed instantly
- Folding feed apron & chute for easy transport

Popular 3-pt Hitch Model or Pull Type Trailer Option

OLATHE MANUFACTURING, INC.
100 Industrial Parkway
Industrial Airport, KS 66031

**800-255-6438
913-782-4396**

Circle No. 151 on Reader Inquiry Card

TRY THIS WITH ANY OTHER

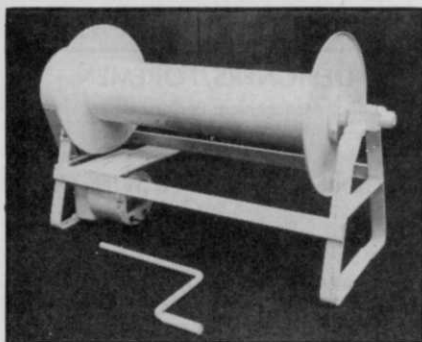
Others do their level best to convince you that a flashy-looking riding mower is just what you need.

But for all those times when "level best" isn't good enough, consider a 68" or 84" Triplex from National.

They're engineered with ground-hugging stability that lets you cruise over virtually any terrain. And even a beginner gets professional results because the Triplex's three floating reels reach out over crowns or curbs without ever scalping.



volt DC motor for self-contained power, or it can be adapted to PTO. The fluid path of the reel is nickel-iron with a stainless steel one-piece elbow.



Circle No. 198 on Reader Inquiry Card

Tree Spade digs up to four feet into ground

Burkeen Manufacturing Company's Arbor Master 45 tree spade features a 1,500-pound root ball that is 48 inches deep for less root damage and better tree livability, says the manufacturer. Available in either truck or loader mount, the Arbor Master 45 is all hydraulic with controls located for optimum visibility and safety.

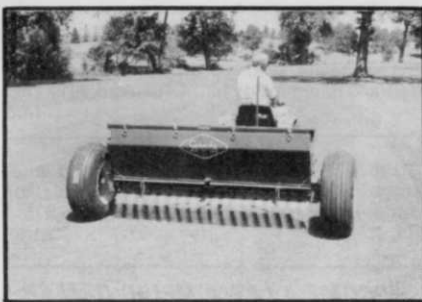
Circle No. 199 on Reader Service Card



Circle No. 199 on Reader Service Card

Spreader features steel hopper bottoms

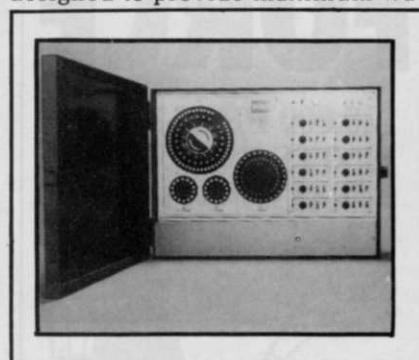
The Gandy 10 Series fertilizer spreaders feature full stainless steel hopper bottoms and metering slides. Gandy says the components give longer service life while complementing the precision metering of the Gandy units. Cam gauges on all Gandy spreaders adjust hopper openings to assure uniform, full-width application across the entire swath. The 10 Series spreaders are available in two models for both agricultural and turf use.



Circle No. 200 on Reader Inquiry Card

Toro Irrigation has new controller

Toro's Irrigation Division introduces the H-312 Controller designed to provide maximum wa-



tering flexibility with three independent, easy to use programs. The unit features solid state reliability and user-friendly programming, according to the manufacturer. It provides 45 start times with watering cycles of up to 60 minutes per station.

Circle No. 201 on Reader Inquiry Card

KEEPS TURF in top condition

Low-Cost FURST FLEX-TINE HARROW

The proven low cost way to keep golf courses, athletic fields, ball diamonds and all turf areas in top condition. Crumbles and scatters cores without clogging, brings up thatch, prepares seedbed without disrupting existing growth. Areates to stimulate growth, scarifies to improve moisture penetration. Works in seed and fertilizer. Maintains cinder tracks. 4 to 42 ft. widths. Adjustable penetration. No maintenance. *Satisfaction guaranteed.*

For FREE literature, testimonials, prices, phone toll-free 1-800/435-9630. (In IL, call 815/732-3239). Or write

FURST BROTHERS, INC.
P.O. Box 356-WT, Oregon, IL 61061

Circle No. 127 on Reader Inquiry Card

RIDING MOWER!

Like all National mowers, your Triplex comes standard with our famous oversized bedknives and adjustable reels. This assures you years of dependable service with absolute minimum upkeep.

Fast, simple, versatile, and dependable — if that's what you want

in an all-terrain mower, write or call us today for complete details and a Free Demonstration from the dealer nearest you.

National Mower Company
700 Raymond Avenue
St. Paul, Minnesota 55114
612/646-4079.



Circle No. 148 on Reader Inquiry Card

TASK FORCE

**20,000 PROMARK
UNITS IN ACTION
NATIONWIDE!**



3 models

MODEL 16-SP (self-propelled) STUMP & ROOT GRINDER

Grinds stumps to 18" below ground. Under 30" wide.



3 models
incl. P.T.O.

MODEL 310 BRUSH CHIPPER

Feeds from any direction. 360° rotation. Hydraulic feed.



6 models including trucks & trailers.

AERIAL LIFT

Install/remove in under 10 minutes. 360° continuous rotation, feathering controls.

PROMARK PRODUCTS INC.

306 9th Avenue
City of Industry, CA 91746
(818) 961-9783

THE LEADER IN INNOVATION

Circle No. 160 on Reader Inquiry Card

CLASSIFIEDS

RATES: \$1.00 per word (minimum charge, \$25). Bold face words or words in all capital letters charged at \$1.25 per word. Boxed or display ads: \$85 per column inch-1x (one inch minimum); \$80-3x; \$75-6x; \$70-12x. Agency commissions will be given only when camera-ready art is provided by agency. For ads using blind box number, add \$5 to total cost of ad. Send ad copy with payment to Dawn Nilsen, WEEDS TREES & TURF, 1 East First Street, Duluth, MN 55802 or call 218-723-9200.

BOX NUMBER REPLIES: Mail box number replies to: WEEDS TREES & TURF, Classified Ad Department, 120 W. 2nd St., Duluth, MN 55802. Please include box number in address.

BUSINESS OPPORTUNITIES

WANT TO BUY OR SELL a golf course? Exclusively golf course transactions and appraisals. Ask for our catalog. McKay Golf and Country Club Properties, 15485 N. East Street, Lansing, Michigan 48906. Phone (517) 484-7726. TF

Tree Service Business. Very profitable, business and equipment, \$220,000, owner retiring. Contact: Bertrand Bourget, Box 16074, Rumford, RI 02916. 1/86

BUSINESS OPPORTUNITIES: Growing landscape and nursery business in the beautiful Cape Cod area of Massachusetts. Write WTT Box 376. 1/86

BECOME A LAWN MEDIC DEALER AND GROW FASTER WITH US!

*Get The Advantages Of A Large Company,
—But Keep Your Managerial
And Ownership Independence*

You gain by:

- A big competitive edge utilizing the Lawn Medic name, marks, and systems.
- Lower advertising costs.
- Management and technical support.
- Option to group purchase of insurance, equipment, and supplies.
- Increased resale value of your business.
- No up front franchise fee.
- Protected territory, rights to large secondary market areas.
- Lowest business royalty fee in the industry and tangible benefits that will pay for the fee!

It is an easy change over to Lawn Medic. Must be a qualified, licensed L.C.O. manager. Write for details:

E. Shea
Lawn Medic Inc.
617 Sibley Tower
Rochester, NY 14604

HELP WANTED

LANDSCAPE MAINTENANCE FOREMAN to do quality oriented residential landscaping. Associate degree or comparable experience. Must be motivated and have working knowledge of turf and ornamentals. Mechanical ability desirable. Good compensation program. Good opportunity with growing company. Schrauf Landscaping, 35482 Chestnut Ridge, North Ridgeville, Ohio 44039. 216/327-8873. 12/85

Landscape Construction And Maintenance: Tired Of Long, Cold Winters? Award Winning Company In Atlanta Seeks Experience And Dedication. Full Benefits And Top Pay For A Twelve Month Season. Send Letter And Resume To Convey Your Interest. Gibbs Landscape Co. (Formerly Greenbrothers), 4111 Burge Road, Smyrna, Georgia 30080. 1/86

DESIGNERS/FOREMEN

Office Management Personnel needed.
Residential Work Only

Send resume to:
DENNIS ANDERSON & WIFE, INC.
P.O. Box 702
Barrington, IL 60010 4/86

TREE CARE MANAGER—rapidly growing Eastern PA lawn and tree care company seeking individual to manage and oversee complete tree care operation. Must be capable of completely designing tree care program and be well versed in all phases of chemical tree care. 3 years management or supervisory experience mandatory. Formal education important. Excellent starting compensation package for qualified applicant. Send resume indicating present and past work history and salary to WTT Box 378.

SOD FARM MANAGER: 500 acre Chicago-area operation seeks qualified manager. Involves production, irrigation, and harvesting. Excellent salary and benefits. Send resume to WTT Box 354. 2/86

MANUFACTURERS REPS

We've got a lot of people, in a wide range of markets, that want to see this **HARLEY LINE**.

Money making opportunities in most parts of the country will be filled in the next few months. If you have time, like to demonstrate and want more profit dollars.

CALL
1-800-437-9779

1/86

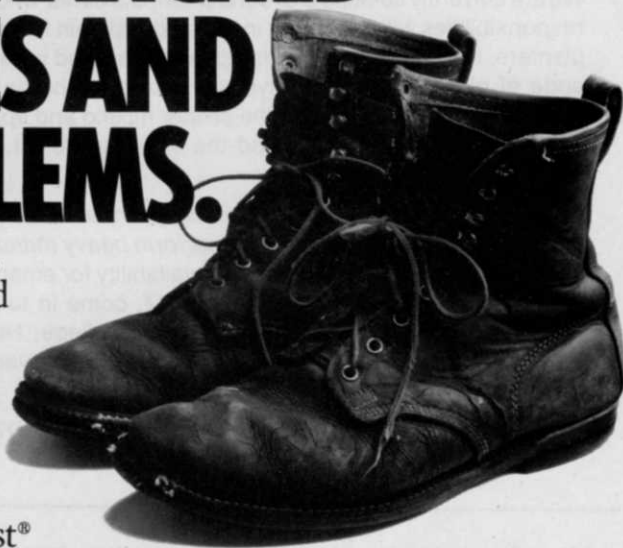
LANDSCAPE IRRIGATION SPECIALIST—Several openings for individuals qualified in total irrigation repair of major systems for Dallas area landscape maintenance firm. License helpful but not required. Majority of work on commercial properties. Salary commensurate with experience. Many benefits plus bonus opportunities. Send resume with complete experience background and salary requirements in care of WTT Box 352 1/86

CEMETERY SUPERINTENDENT: Florida West Coast. 100 acres; 1200 services/year. 20-man crew. Salary \$22,000-\$30,000; excellent fringes. Requires: B.S. Agricultural Science, 3 years field supervisory experience in Southern climate. Send resume to WTT Box 374. 1/86

LAWN MEDIC. SERVICE TECHNICIAN: Full time positions, year round employment. Lawn care experience preferred. Competitive salary and fringe benefits. Call 1-3 p.m. (919) 724-7075 or NC only 1-800-822-3224, or send resume: P.O. Box 769, Kernersville, NC 27285. 1/86

Landscape, Irrigation, Lawn Care Contractor seeking an aggressive, self motivated person for seven month seasonal business in the snow country of Northern Michigan. Send resume with experience and salary requirements to: Lappan's of Gaylord, 4085 South Old 27, Gaylord, Michigan 49735. 1/86

BEFORE WE DEVELOPED THESE PROBLEM-SOLVING TURFGRASS MIXTURES, WE MARCHED THROUGH ACRES AND ACRES OF PROBLEMS.



Nobody knows the troubles we've seen.

Our Northrup King turf specialists and researchers have hoofed through salt problems, soil compaction, disease, starved turf, baked turf, cleated-to-shreds turf, and dormant winter turf—all depressing sights. But it was a road well worth our travels.

The result is a complete line of Medalist® turfgrass formulas that meet the demands of the professional turf manager.

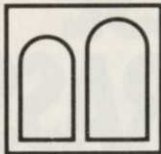
If you've been staring down at a turf problem, look up your solution here. And if you think it's a turf problem we haven't seen, just let us know.

Our business is putting your problems behind us.



MEDALIST TURF PRODUCT	MAJOR AREAS OF USE	SPECIAL FEATURES
Athletic Pro and Athletic Pro II	For athletic turf.	Well suited for new seeding or overseeding. Fast establishing, traffic tolerant, rapid recovery. Both provide good footing.
Boulevard Mix	Any area with high pH (roadsides, sidewalks, boulevards, alkaline soils, etc.).	Contains 'Fults' and Dawson red fescue for beautiful salt-tolerant turf. Performs at low to high fertility levels.
Landscape Pro Mix	School grounds, cemeteries, golf course roughs, home lawns.	Establishes fast. Adapts to broad range of conditions and management levels. Low to moderate fertility needs.
Overseeder II Mix	Fairways, tees, athletic fields.	Rapid germination and establishment. Withstands heavy traffic and resists diseases. Penetrates compacted soils.
Medalist North Mix	Fairways, tees, cart paths, wear areas.	Quality turf for high traffic areas. Clean mowing and disease resistant.
Premium Sod Blend	Commercial sod production.	Exceptional dark green color. Tolerates light shade. Superior disease resistance. Rapid sod producer.
Renovator Pro Mix	Problem solver for heavy traffic areas (athletic fields, golf tees, and fairways).	Penetrates compacted soils and combats <i>Poa annua</i> . Adaptable to most geographic regions.
Medalist Brand Overseeding Products	Winter overseeding of dormant bermudagrass.	Establishes rapidly and evenly. Tolerates traffic while providing a superior putting surface. Smooth spring transition.

Ask your Northrup King distributor about Medalist Turf Products to solve your turf problems. Or write Northrup King Medalist Turf Products, P.O. Box 959, Minneapolis, MN 55440.



Bentley College

GROUNDSKEEPER/GARDENER

We are currently seeking a Groundsman/Gardener whose primary responsibilities will be to plan, install and maintain flower beds and planters. Incumbent should also possess a good working knowledge of plant materials, all types of flowers, shrubs and trees. Other responsibilities will be the proper mixing and application of all sprays and insecticides and the ability to select, prune and shape all trees and shrubs.

REQUIREMENTS: At least 5 years experience in horticulture or equivalent schooling, the ability to perform heavy manual work, a Massachusetts Driver's license and availability for emergency call in. Qualified applicants call 617-891-3427, come in to fill out an application or forward resume to Bentley College, Human Resources Dept., F. & A. Morison Bldg., Rm. 145, Beaver & Forest Sts., Waltham, MA 02254.

AN EQUAL OPPORTUNITY/AFFIRMATIVE ACTION EMPLOYER M/F.

1/86

PARKS DISTRICT MAINTENANCE OPERATIONS

MANAGER—Annual Salary \$27,047.00. The City of Atlanta, Georgia is recruiting to fill a vacancy in parks maintenance administration. This individual is responsible for the daily administration of the parks district maintenance system and other activities for the beautification and environmental enhancement of the City of Atlanta. Applicants must possess a Bachelors Degree in ornamental horticulture, agronomy, turf management or a closely related field and a minimum of three years of progressively responsible experience in park management and supervision, preferably in the top capacity of local government. A Georgia drivers license is required upon appointment. Registration as a professional in a program approved by the National Park and Recreation Association or a nationally recognized licensing authority is desirable. **RECREATION SPECIAL PROGRAMS MANAGER (\$24,044.00 Annually).** The City of Atlanta is seeking an individual with a background in recreation administration, with skills in program development, implementation and evaluation. Responsibilities include designing and coordinating a multi-faceted summer youth recreation program. Applicants must possess a Bachelors Degree in recreation administration and at least three years of top level management experience in recreation administration, program design and development, coordination and evaluation of multi-faceted programs involving local, state and federal government agencies, large corporations and various other community resource agencies. Demonstrated ability in fundraising budget preparation, expenditure of funds; directing, organizing and coordinating the efforts of a large staff, varied government agencies and educational institutions. A valid Georgia drivers license is required upon appointment. Registration as a professional Recreator in a program approved by the national recreation and park association is desirable. Metro Atlanta prospects must apply in person M/T, from 8:30 A.M. to 4:30 P.M. All others must request an application by February 21, 1986, specifying the job title from: City of Atlanta, BPHR, 260 Central Avenue S.W., Atlanta, GA 30335 EEO/full benefits. 1/86

Tree and Shrub Care. Salesman and Application Specialists. America's fastest growing tree and shrub company seeking experienced, aggressive personnel for existing and expansion markets. Experience, degree and motivation key ingredients. Tremendous advancement opportunities. Excellent salary benefits. All inquiries will be strictly confidential. Send resume, salary history to: William Scott Carr, Tru Green Tree and Shrub Care, 8324 Shaver Road, Kalamazoo, MI 49002. Expand your potential with an industry leader. 1/86

Go West Young Manager - One of the nation's fastest-growing lawn and tree care companies is looking for experienced, successful managers to help us grow both in our lawn care and our tree care divisions. Send resume to: WTT Box 377. 1/86

LANDSCAPE MAINTENANCE AND CONSTRUCTION SUPERVISORS: Rochester, N.Y. Responsibilities include production and sales - Commercial/Residential. Excellent career opportunities for responsible, ambitious, and self motivated individual. Send qualifications and employment history to: P.O. Box 92, Webster, NY 14580. 1/86

LANDSCAPE MAINTENANCE SALES—Positions available in sales with one of Dallas/Fort Worth's leading landscape maintenance companies. Respondents must have experience in landscape maintenance or related field and comprehensive sales background. We're looking for personable, ambitious and self-motivated people. Please send resume with salary requirements in care of WTT Box 350. 1/86

	Landscape Design	FREE BROCHURE
	RUBBER STAMPS	
Landscape Design Kits Interior Plant Sets Tree Stamps Books	AMERICAN STAMP CO. 12290 Rising Rd., suite 200-w Wilton, CA 95693 (916) 687-7102	

HEAD GOLF COURSE MECHANIC—Large company seeking an enthusiastic and knowledgeable person to take charge of a well equipped maintenance facility. Golf Course experience preferable, with background in fabrication and shop supervision. Excellent salary, benefits and opportunities available. Send resume to: Club Manager/Superintendent, Jacaranda Country Club, 9200 W. Broward Blvd., Plantation, Florida 33324. 1/86

LANDSCAPE TURF SPECIALIST—Expanding landscape maintenance firm in Dallas area seeks experienced, knowledgeable individual licensed in ornamental pesticide applications. Serious opportunity for serious individual. Competitive salary plus benefits and bonus incentives. Send resume to include details of experience and salary requirements in care of WTT Box 351. 1/86

LANDSCAPE MAINTENANCE FIELD SUPERVISOR—Great opportunity available with large, quickly expanding firm in Dallas area. Must have landscape experience and technical knowledge in order to qualify. Excellent salary plus benefits and bonus incentive programs. Send resume describing pertinent experience and salary requirements in care of WTT Box 353. 1/86

Management Trainee - ServiceMaster LawnCare - We are a multinational service company looking for people to train for management positions in our rapidly expanding franchise operation. We need people with good communication skills, customer service orientation, and willingness to relocate. We offer compensation based on ability and productivity, complete benefit package, and the opportunity to grow with the number one service company of the Fortune 500. Please respond with resume, salary history and requirements to: ServiceMaster Industries, LawnCare Division, 2300 Warrenville Road, Downers Grove, IL 60515. T/F

Management. Challenging opportunity for Operations/Sales Manager on a corporate level with major lawn service company in Chicago-area. Seeking take charge individual with proven track record in sales and production management. Ideal candidate to have telemarketing experience. Liberal salary and profit sharing plan. Please respond with resume and salary history to: S.R. Blass, P.O. Box 486, Cary, IL 60013. 1/86

Help wanted: supervisor or manager for well established landscape and maintenance firm. Potential unlimited for right person. Only those willing to work need apply. Send resume and salary desired to: Joe Sidari Landscaping, Inc., 2358 Highmoor Road, Highland Park, IL. 60035. 1/86

FOR SALE

FOR SALE: Spray trucks. 1985 International Harvester 1654 Load Star diesel with 1250 gallon stainless steel 2-compartment tank and PTO driven pump. 2 units available - for lawn and tree spraying. Only 8 months old, 3000 miles. Call (516) 757-5233.

SOD FARM—18 acre producing farm complete with equipment, beautiful country home and barn. Established 1972 and has produced the area's finest sod. 20 minutes from downtown Indianapolis. Call 317-769-3230. 2/86