

Manhattan II

...it's a whole new ball game!

The professionals who maintain athletic fields have made Manhattan the standard for hard use turf areas.

The best has now become better. Years of cooperative research by New Jersey Agricultural Experimental Station and Pure Seed

Testing, Inc. have gone into the development of Manhattan II. The results are darker green color and finer leaf texture than Manhattan. Manhattan II provides good heat and drought tolerance, good shade adaptation and excellent spring greenup.

Manhattan II establishes quickly and has better mowability than our old standard. With brown patch and crown rust resistance, Manhattan II is the ideal surface for work or play.

Manhattan II ... we've improved everything about it, including the price!

Qualified turf associations can earn cash for turf research by saving Manhattan II blue tags.

Manhattan II

OREGON CERTIFIED
TURF-TYPE
PERENNIAL RYEGRASS

Distributed by

Turf Merchants, Inc.

PO Box 1467 • Albany, OR 97321
Outside Oregon 800-421-1735
503/491-3622 TWX 910-997-0733

Turf-Seed, Inc.

PO Box 250, Hubbard, OR 97032
503/981-9571 TWX 510-590-0957
Circle No. 135 on Reader Inquiry Card



Contact your dealer for details.



continued

Asplundh Tree Expert Co
Blair Mill Rd
Willow Grove PA 19090
215-784-4244

Bartlett Mfg Co
3003 E Grand Blvd
Detroit MI 48202
313-873-7300

BASF Wyandotte Corp
100 Cherry Hill Rd
Parsippany NJ 07054
201-263-0200

Bonide Chemical Co
2 Wurz Ave
Yorkville NY 13495
315-736-8231

Samuel Cabot Inc
One Union St
Boston MA 02108
617-723-7740

Cal-Fiber Co
611-625 S Anderson St
Los Angeles CA 90023
213-268-8381

Cellin Mfg Inc
9610 Gunston Cove Rd
Lorton VA 22079
704-690-1195

Center Plains Industries Inc
10800 Canyon Dr

PO Box 7970
Amarillo TX 79114-7970
806-622-2000

Chevron Chemical Co
575 Market St
San Francisco CA 94120-7144
415-894-2378

★ Ciba-Geigy Corp Ag Div
401 Swing Rd
Greensboro NC 27419
919-292-7100

C-I-L Inc
171 Queens Ave
PO Box 5201
London ON N6A 4L6
Canada
519-672-9220

Clean-Flo Laboratories Inc
4342 Shady Oak Rd
Hopkins MN 55343
800-328-6656; 612-935-2137

W A Cleary Corp
1049 Somerset St
Somerset NJ 08873
201-247-8000

Conwed Corp
444 Cedar St
St Paul MN 55101
612-221-1100

Coopers Creek Chemical Corp
River Road
West Conshohocken PA 19428
215-828-0375

Creative Sales Inc
222 N Park Ave
Fremont NE 68025
402-727-4800

Cumberland International Corp
1523 N Post Oak Rd
Houston TX 77055
713-682-1221

Ross Daniels Inc
1720 Fuller Rd
PO Box 65430
West Des Moines IA 50265-0430
515-225-6471

Davey Tree Experts Co
117 S Water St
Kent OH 44240
216-673-2027

Doggett Corp
Cherry St
Lebanon NJ 08833
201-236-6335

★ Dow Chemical USA
9008 Bldg
Ag Products Section H
Midland MI 46840
517-636-1105

We are number one!



FALL
IS
FOR
PLANTING
TREES • SHRUBS
LAWNS • BULBS
WE SUPPORT!

Wilt-Pruf Products, Inc.

P.O. Box 4280 • Greenwich, Connecticut 06830-0280 • (203) 531-4740

Circle No. 171 on Reader Inquiry Card

★ Advertiser. See Advertiser's Index

THE PROFESSIONAL'S CHOICE.



Professionals know that when it comes to the day-in and day-out, 8-hour-a-day grind of commercial lawn care with heavy grass, wet conditions, high weeds and thatch, they need the heavy-duty ruggedness of Sensation.

Backed by 46 years of building professional equipment, Sensation uses Industrial/Commercial engines, heavy-gauge components and field-proven designs. The result is equipment that will work hard, long hours and keep coming back for more,

with little or no downtime. Equipment that is designed for maximum user convenience and handling ease.

If you're a landscaper responsible for maintenance of public or private property, be a professional, get the lawn care equipment that's number one on the job.

Call or write today for more information on our complete line of professional quality mowers, Intermediates, Sickle Bars, Hi-Wheelers, power rakes and aerators.

Sensation

Professionals Count on Us

Sensation Power Equipment Division
Gilson Brothers Co.
P.O. Box 536, Plymouth, WI 53073
414/893-1011

Circle No. 156 on Reader Inquiry Card

continued

Drexel Chemical Co
2487 Pennsylvania St
Memphis TN 38109
901-774-4370

E I du Pont de Nemours & Co
1007 Market St
Wilmington DE 19898
302-774-7547

★ Elanco Div of Eli Lilly Corp
Lilly Corporate Center
Indianapolis IN 46285
317-261-3638

★ Encap Prods Co
PO Box 278
Mt Prospect IL 60056
312-593-6464

Estech Inc
One Southern IL Bank Bldg 2nd Fl
Fairview Heights IL 62208
618-398-8190

Faesy & Besthoff Inc
143 River Road
Edgewater NJ 07020
201-945-6200

★ Finn Corp
2525 Duck Creek Rd
Cincinnati OH 45208
513-871-2529; 800-542-7166

★ Four Star Agricultural Services Inc
2275N St Rd 1

PO Box 463
Bluffton IN 46714
219-824-5384

Fuerst Brothers Inc
PO Box 271
Rhinebeck NY 12572
914-876-3575

Grass Fiber Inc
520 E Second St
Junction City OR 97448
503-998-6812

Grass Growers Inc
424 Cottage Pl
Plainfield NJ 07060
201-755-0923

Great Lakes Biochemical Co
6120 W Douglas Ave
Milwaukee WI 53218
414-464-1200

Great Salt Lake Mineral & Chemicals Corp
PO Box 1190
Ogden UT 84402
801-731-3100

Hawkeye Chemical Co
Box 899
Clinton IA 52732
319-243-5800

Hendrix & Dail Inc
PO Box 648

Greenville NC 27835-0648
919-758-4263

Hoechst Fibers Ind
PO Box 5887
Spartanburg SC 29304
800-845-7597

Hopkins Agricultural Chemical Co
PO Box 7532
Madison WI 53707
608-222-0624

ICI
PO Box 751
Wilmington DE 19897

International Spike
PO Box 1750
Lexington KY 40593
800-354-9360

Kalo Agricultural Chemicals
4550 W 109 St Ste 222
Overland Park KS 66211-1383
913-649-5525

Kincaid Enterprises Inc
Box 671
Nitro West Virginia 25143-0671
304-755-3377

★ Lebanon Chemical Corp
PO Box 180
Lebanon PA 17042
717-273-1685

Leffingwell Chemical Co
111 S Berry
Brea CA 92621
714-871-1991

★ Lesco Inc
20005 Lake Rd
Rocky River OH 44116
216-333-9250

Maag Inc
PO Box 6430
Kings Hwy
Vera Beach FL 32961-6430
305-567-7506

★ Mallinckrodt Inc
PO Box 5439
St Louis MO 63147
314-982-5217

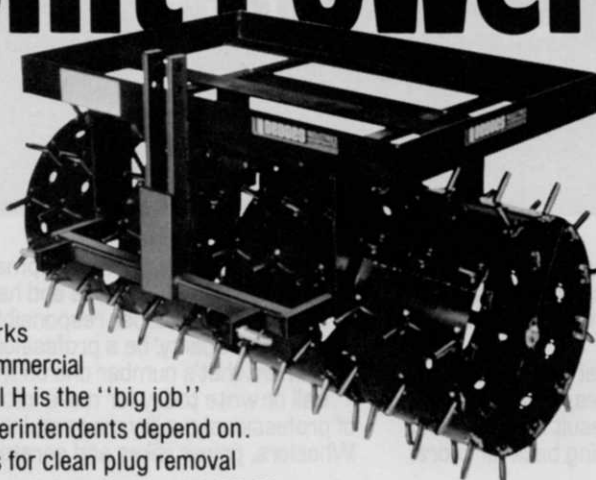
J J Mauget Co
2838 N Naomi St
PO Box 3422
Burbank CA 91504
213-849-2309
800-423-2699 CA

MCI AgSystems
Melamine Chemicals Inc
PO Box 748
Donaldsonville LA 70346
504-473-3121

Merck & Co
PO Box 2000
Rahway NJ 07065-0912
201-750-8463

3-Point Power

- ★ Dedoes Model H
3-Point Mount -
- ★ For fast, easy
hook-up, and
- ★ rugged, depend-
able aeration!



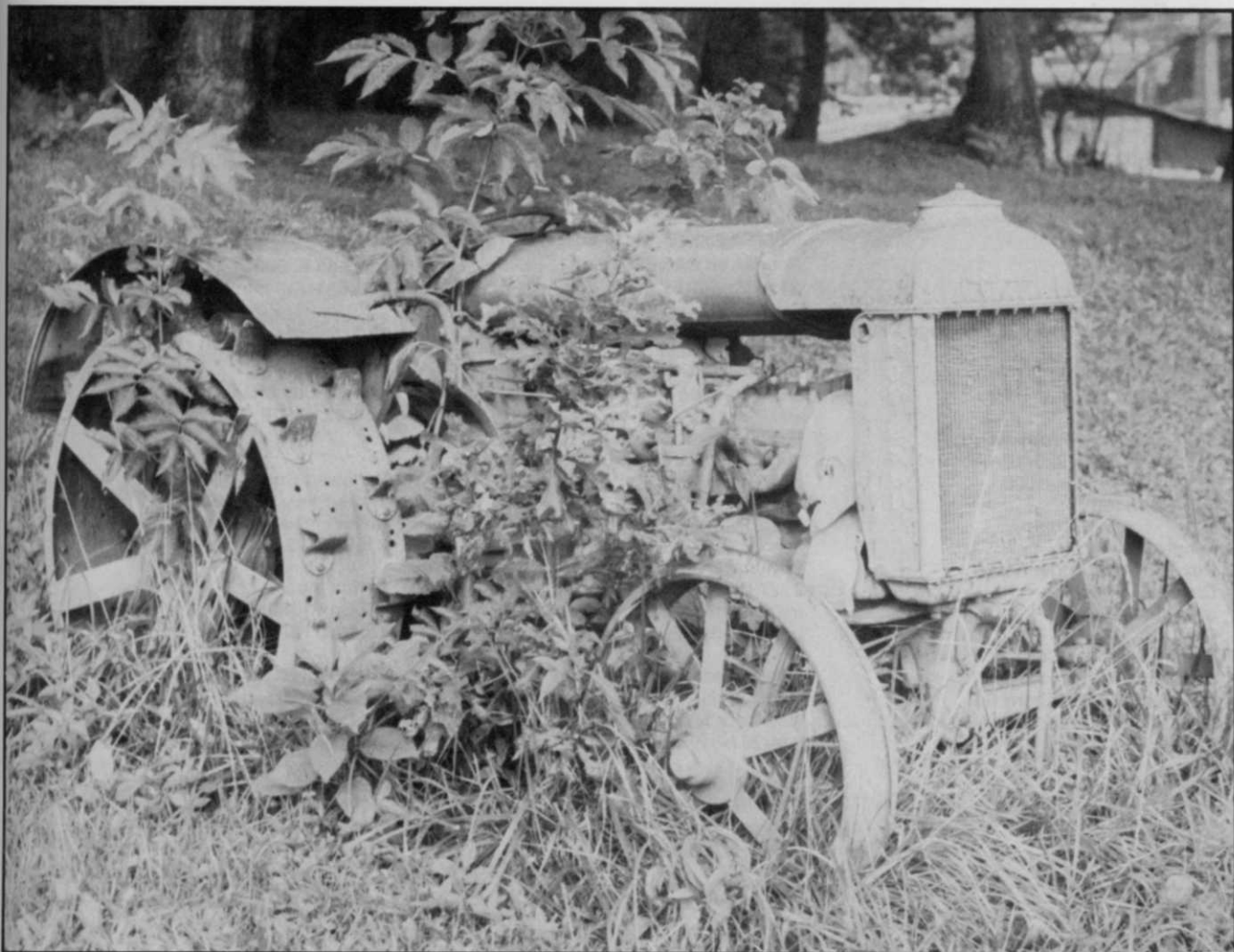
From golf courses, parks and athletic fields to commercial use, the Dedoes Model H is the "big job" aerator that smart superintendents depend on. Patented, hinged tines for clean plug removal are standard on 2-3-4 or 5 drum units with 36-60 or 120 tines per drum. Heavy duty solid steel construction utilizes low-cost cement blocks for weight. So if you're looking for power and dependability in a low-maintenance aerator . . . look into a Dedoes aerator today.

Ask about our full line of Aerators and Groundskeeping Equipment.

DEDOES INDUSTRIES
INCORPORATED

313-624-7710 • 800-521-7086 **Grounds Maintenance Division**
1060 W. West Maple Rd. • P.O. Box 575 • Walled Lake, Michigan 48088

Circle No. 110 on Reader Inquiry Card



When it's time for a new machine, shop for one in WEEDS TREES & TURF.

When you need new equipment, get up to the minute ideas from the advertising of major manufacturers in every month's issue of WEEDS TREES & TURF.

The September Issue is of special value to you. It contains the WEEDS TREES & TURF Buyer's Guide. Published every September, when our industry's annual budgeting and equipment planning begins, it provides you with fingertip access to thousands of supplier listings.

Leading equipment manufacturers advertise in WEEDS TREES & TURF because they know you . . .

and 45,000 other landscape managers read us regularly. You are BIG business.

For example, together, you service over 8 million acres of turf yearly. You own 264,000 tractors and 428,000 golf carts/utility vehicles. And most important to manufacturers, you spend over \$1 billion yearly on new equipment.

So when you're looking for new equipment, look for it in the pages of WEEDS TREES & TURF. It pays off. Use the convenient Reader Service Cards bound into each issue. It's the easy, no-cost way to get free information fast from our advertisers.

WEEDS TREES & TURF

ABP
V BPA

HBJ A HARCOURT BRACE JOVANOVICH PUBLICATION

continued

Michigan Peat Co
PO Box 66388
Houston TX 77266
800-231-6211; In TX 713-522-0711

Milliken Chemicals
Campton Rd
PO Box 817
Inman SC 29349
803-472-9041

Milwaukee Metropolitan Sewerage District
735 N Water St
Milwaukee WI 53202
414-225-2222

3M/Agricultural Products
3M Center/Bldg 223-1N-05
St Paul MN 55144-1000
612-733-3150

Minntralia Mfg Inc
Box 135 West Edge Village
Garfield MN 56332
612-834-2214

Mobay Chemical Corp
Agricultural Chemicals Div
PO Box 4913 Hawthorn Rd
Kansas City MO 64120
816-242-2000

★ Monsanto Co
800 N Lindbergh Blvd
St Louis MO 63167
314-694-1000

Montco Products Corp
Box 404
Ambler PA 19002
215-628-3144

★ Moyer & Son Inc
113 E Reliance Rd
Souderton PA 18964
215-723-6001

Nalco Chemical Co
2901 Butterfield Rd
Oak Brook IL 60521
312-887-7500

National Bark Sales
1365 N Orchard St
PO Box 7672
Boise ID 83707
208-375-0656

National Chemsearch
2727 Chemsearch Blvd
Irving TX 75062
214-438-0389

Nepera Inc
Route 17 Harriman
New York NY 10926
914-782-8171

Nor-Am Chemical Co
3509 Silverside Rd
Wilmington DE 19803
302-575-2000

Occidental Chemical Co
PO Box 198
Lathrop CA 95330
209-858-2511

Oil-Dri Corp of America
522 N Michigan Ave
Chicago IL 60611
800-621-7191; In IL 312-321-1515

★ PBI-Gordon Corp
1217 W 12 St
Kansas City MO 64101
816-421-4070

Pennwalt Corp
Three Pkwy Ste 619
Philadelphia PA 19102
215-587-7219

Perlux Inc
PO Box 1359
Wendell NC 27591

Plant Marvel Laboratories Inc
371 E 16 St
Chicago Hts IL 60411
312-757-7500

Prentiss Drug & Chemical Co
21 Vernon St CB 2000
Floral Park NY 11001
516-326-1919

Lo-Blo, the Air-Broom®

rounds up leaves and litter

ADD PUNCH in lawn cleanup work to make tough jobs quick and easy. A small crew using Atwater Strong **HEAVY DUTY COMMERCIAL BLOWER-SWEEPER** can gather leaves, trash, litter, clippings faster than any other way!



Model 14 KPT
ALSO 16 HP
MODEL



NEW
Model
43T

Put a WHIRLWIND FORCE to work to blow lawns and paved surfaces clean every season of the year. Get facts on 9 models. 3 to 45 hp available.



MODEL
8K

for EASY "GET AROUND"

BACK PACK brings one more capability to AIR BROOM performance. With wand or hand-held, gets into tight corners, hollows, foliage and even overhead. Weighs only 21 lbs. yet blows at 220 mph. Reliable, economical 2-cycle engine.

VACUUMS
3600 CU. FT.
PER MINUTE



MI-T-VAC 16 SVL

'BIG JOB' LOADER
ON-A-TRAILER

packs dump truck full of leaves in 25 minutes. Has 16 hp cast iron engine, 8" hose reaching 20 feet. Boom to swing hose available.

ATWATER STRONG

BOX 68 • ATWATER,
LAWN EQUIPMENT SINCE 1949



DIVISION
OF SODASER INDUSTRIES, INC.

OHIO 44201
216 / 947-2344

Circle No. 103 on Reader Inquiry Card

INTRODUCING



IMPERIAL WALK BEHIND AERATOR

(Patent Pending)

SPECIFICATIONS:

- Engine—5 HP, 4 Cycle Briggs and Stratton, 6 to 1 Gear Reduction
- Weight—450 lbs.
- Drive—Chain Driven and Belt
- Aerating Path—20"
- Width—Overall 30"
- Drive Wheel Castings—6-34# each
- Pillow Type Tine Holder—1 1/2" x 2 1/2" Steel, Unbreakable
- Core Type Tines—21-5/8" x 3 1/2"
- Retractable Tines
- Adjustable Handle for Ease of Handling



Is rugged and requires little maintenance.

NOW, See And Buy the BEST! . . .

A Demonstration Will Convince You!



For More Information call or write
EARL J. CRANE INC.

AND ASSOCIATES

3975 S. Seneca Co. Rd. 19
Tiffin, Ohio 44883
Ph. 419-447-8313

Circle No. 114 on Reader Inquiry Card

continued

Reclamare Co
20727 Seventh Ave South
Seattle WA 98401
206-824-2385

Regal Chemical Co
600 Branch Rd
Alpharetta GA 30201
404-475-4837

Rhone-Poulenc Inc Agrochem Div
Chipco Products
PO Box 125
Monmouth Junction NJ 08852
201-297-0100

RIGO Co
PO Box 89
Buckner KY 40010
502-222-1456

Rockland Chemical Co
686 Passaic Ave
West Caldwell NJ 07007
201-575-1322

Rohm & Haas Co
Independence Mall West
Philadelphia PA 19105
215-592-3000

Rothwell Seeds Ltd
PO Box 511
Lindsay ON
Canada K9V 4S5
705-324-9591

★ O M Scott & Sons Co
14111 Scottslawn Rd
Marysville OH 43041
513-644-0011

SDS Biotech
7528 Auburn Rd
PO Box 348
Painesville OH 44077
216-357-3000

Shell Chemical Co
One Shell Plaza
900 Louisiana St
Houston TX 77002
713-241-6161

Sierra Chemical Co
1001 Yosemite Dr
Milpitas CA 95035
408-263-8080

Source Technology Biologicals Inc
2850 Metro Dr Ste 309
Bloomington MN 55420
612-854-9426

Sta-Green Plant Food Co
PO Box 540
Sylacauga AL 35150
205-245-5282

Stanford Seed Co
Muddy Creek Rd
RR #1 Box 405

Denver PA 17517
215-267-3805

Stauffer Chemical Co
Westport CT 06881
203-222-3254

Stull Chemical Co
PO Box 47907
San Antonio TX 78265
512-227-5255

Sudbury Laboratory Inc
6 October Hill Rd
New Englander Ind Park
Holliston MA 01746
617-429-7900

Thermoguard Co
412 113th
Arlington TX 76011
817-640-8733

UAP/United Agri Special Products Inc
PO Box 37800
Omaha NE 68137
402-330-1910

Union Carbide Ag Prod Co
TW Alexander Ave
PO Box 12014
Research Triangle Park NC 27709

United States Gypsum Co
101 S Wacker Drive
Chicago IL 60606
312-321-3863



**We could
sell more
if they
didn't
last so
long.**

Available in
5 Gal. (20 K)
3 1/2 Gal. (15 K)
2 1/2 Gal. (10 K)

BIRCHMEIER

Back Pack Sprayers are renowned for their long life. But that's just one of our features. Look at some others:

- **Quality** - precision components of the best materials.
- **Accessible** - pump assembly is external to minimize contact with corrosive liquid.
- **Simple** - no tools necessary to disassemble for cleaning or repair.
- **Comfortable** - lightweight construction designed for the comfort of the user.

Technical data	FLOX 2 1/2 gal.	IRIS 3 1/2 gal.	SENIOR 5 gal.
Weight #	11	11.4	12.1
Tank Capacity	2.6 gals.	3.9 gals.	5.2 gals.
Max. Working Pressure	84 PSI	84 PSI	84 PSI

TREBOR CORPORATION

4045-A Jonesboro Road
404/366-0957

Forest Park, GA 30050
Telex 759-353

Circle No. 163 on Reader Inquiry Card

continued

USS Agri-Chemicals
233 Peachtree St
Atlanta GA 30303
404-572-4000

Vaughan's Seed Co
Chimney Rock Rd
Bound Brook NJ 08805
201-356-4200

Velsicol Chemical Corp
341 E Ohio St
Chicago IL 60611
314-670-4665

★ Warren's Turf Nursery Inc
Chadbourne & Cordelia Rds
PO Box 459
Suisun City CA 94585
707-422-5100
800-828-8873

Weyerhaeuser
Tacoma WA 98477
206-924-5986

★ Wilt-Pruf Products Inc
PO Box 4280
Greenwich CT 06830
203-531-4740

Zoecon Corp/A Sandoz Co
PO Box 10975
Palo Alto CA 94303
415-857-1130



5. Seed Companies

Adelphi Kentucky Bluegrass
PO Box 310
Hollis NY 11423
212-739-4400
Kentucky Bluegrasses: Adelphi

J & L Adikes Inc
182-12 93rd Ave
Jamaica NY 11423
718-739-4400
Kentucky Bluegrasses: Adelphi, Merit, S-21, Merion; Perennial Ryegrasses: All Star, Derby, Citation; Fescues: Cascade, Hounddog Tall, KY.31 Tall, Pennlawn

Bamert Seed Co
Route 1 Box 1120
Muleshoe TX 79347

806-272-4787
Other: Native Turfseed (Buffalograss, Blue Grama, Side Oats Grama, and Lovegrass)

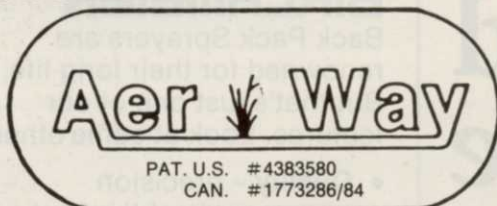
E F Burlingham & Sons
1936 19th Ave
PO Box 217
Forest Grove OR 97116
503-357-2141
Seed Types: Falcon Tall Fescue, Bonnieblue KY Bluegrass, Majestic KY Bluegrass, Birka KY Bluegrass, Sydsport KY Bluegrass, Belle & Pennant Perennial Ryegrass, Banner Chewings Fescue

Genex Seed Co
2882 Howell Prairie Rd Northeast
Salem OR 97305
800-228-4119 (Outside OR)
503-585-7033 (OR)
Kentucky Bluegrasses: Plush, Holiday, Merit; Perennial Ryegrasses: Magnum Brand; Fescues: Bonanza (Tall)

Ernst Crownvetch Farms
RD 5 Box 806
Meadville PA 16335
814-425-7276
814-425-7897
Other: Crownvetch

Daehnfeltd Inc
PO Box 947
Albany OR 97321

DISCOVER THE



PAT. U.S. #4383580
CAN. #1773286/84



ADVANTAGE
FAST,
EFFICIENT,
LOW COST,
LOW MAINTENANCE
WAY TO
TURFGRASS
AERATION

Low energy aerifier

The AER-WAY turf aerifier is a low maintenance, low energy aerifier designed especially for hard compacted traffic and playing areas and sod establishment. It can be used for parks, sports fields, cemeteries, school grounds, estates, and wherever appearances are important.

There are several model sizes available to handle jobs large and small. The tines are available in either a 4 1/2 or 6 1/2 in. length.

The unique patented design fractures the soil between the tines enhancing the soil profile and its natural capillary action. This allows air moisture and fertilizer to get to the root system maximizing growth and greener turf.

The tufts of grass produced by the aeration disappear with the first cutting. The "AER-WAY" now comes standard with a full width weight box, tow bar and parking stands.

Contact your nearest HOLLAND office for the name of your nearest "AER-WAY" dealer.

NEW DEALER INQUIRIES ALSO WELCOME

*Ask about our optional no-tear-4" bentgrass rollers.



Holland Equipment Limited, P.O. Box 339, 20 Phoebe St.,
Norwich, Ontario N0J 1P0 Telephone (519) 863-3414
Holland Hitch Western, Ltd., Cloverdale, B.C. V3S 5K1
Telephone (604) 574-7491
Holland Hitch of Texas, Inc., Wylie, Texas 75098
Telephone (214) 442-3556

Circle No. 127 on Reader Inquiry Card

KEES

HEAVY-DUTY

Commercial Mowers

Available in 32", 36", 48"
and 60" Models



60" MODEL
NO. 601800

CHECK THESE PERFORMANCE FEATURES:

- The 32", 36" and 48" units are equipped with either an 11 h.p. Briggs I/C engine or 11 h.p. Honda synchro-balanced engine. ■ The 60" unit is equipped with an 18 h.p. electric start Briggs I/C engine.
- Fingertip clutch, brake and power turning control levers on each handle. ■ Drum wheel brakes for positive close quarter mowing.
- Baffled under-deck design for clean, safe grass discharge.
- 4-gallon fuel tank. OPTIONS: Riding sulky, large 3-bu. capacity grass catcher and pneumatic tires on front casters (except 32" model).



For more information, write:

F. D. KEES MANUFACTURING COMPANY

P.O. Box 1112, Beatrice, Nebraska 68310
Phone: 402-223-2391

SINCE 1874

Built by Professionals...for Professionals

Circle No. 119 on Reader Inquiry Card