

Seed Companies

continued

Rugby, Aquila, Park, Aspen, Adelphi; Perennial Ryegrasses: NK200, Delray, Pennfine, Goalie, Eton; Fescues: Ruby (Creeping), Dawson Red, Atlanta (Chewing), Scaldis Hard, Galway (Tall); Bentgrasses: Penncross, Penneagle; Turfseed Mixes or Blends: Medalist Brand, Custom Available; Other: Fults Puccinellia Distans Salt Tolerant Turfgrass

★ Oregon Fine Fescue Commission
2140 Turner Rd SE
Salem OR 97302
503-585-1157

Oregon Ryegrass
4093 12th St
Salem OR 97302

Oseco BC Ltd Oregon Ryegrass
Commission
PO Box 3366
Salem OR 97302

Oseco Inc
PO Box 219
Brampton ON L6V 2L2

Canada
416-846-5080
Kentucky Bluegrasses: Baron, Birka, Haga, Sydsport, Majestic, Reubens Canada; Perennial Ryegrasses: Omega, Yorktown II, Norlea; Fescues: Banner (Chewing), Biljart Hard, Dawson Slender Red (Creeping), Fortress Spreading Red, Highlight (Chewing), Reptans Red (Creeping); Bentgrasses: Emerald (Creeping); Turfseed Mixes or Blends: Sod Farm, Park & Athletic Field Mixtures, Land Reclamation Blends-PHD-1, PHD-2, PHD-3, REV 84; Other: S-50 Turf Type Timothy

Patten Seed & Turfgrass Co
119 E Murrell Ave
Lakeland GA 31635
912-482-3131
Other: Centipede grass

★ Penncross Bentgrass Assn
1349 Capitol St NE
Salem OR 97303
503-363-1022

★ Pennfine Perennial Ryegrass
1500 NE Jackson St
PO Box 923
Minneapolis MN 55413
612-781-8011
Perennial Ryegrasses: Cert Pennfine

Otto Pick & Sons Seeds Ltd
Box 126
Richmond Hill ON L4C 4X9
Canada
416-884-1147

Seed Types: Agram, America, Blazer, Banff, Fiesta, Nugget, Touchdown, America Tournament, Exeter, Cheri, Flying, Dormie, Mustang

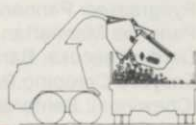
Otto Pick & Sons Seeds Ltd
4750 Lesage CP 151
St Hyacinthe PQ J2S 7B4
Canada
514-799-4586

Seed Types: Banff KY Bluegrass, Cheri KY Bluegrass, Dormie KY Bluegrass, Fylking KY Bluegrass, Nugget KY Bluegrass, Ram I KY Bluegrass, Touchdown KY Bluegrass, Barone KY Bluegrass, Adelphi KY Bluegrass, Merion KY Bluegrass, Park KY Bluegrass, Canon Canada Bluegrass, Common Canada Bluegrass, Reubens Canada Bluegrass, Agram Chewing Fescue, Jamestown Chewing Fescue, Pennlawn Creeping Red Fescue, Tournament Hard Fescue, Blazer Ryegrass, Fiesta Ryegrass, Derby Ryegrass, Manhattan Ryegrass, Pennfine Ryegrass, Exeter Colonial Bent Grass, Penncross Creeping Bent Grass, Emerald Creeping Bent Grass, Astoria Coloniale Bent Grass, Seaside Creeping



ROCKHOUND TEACHES THE ABC'S OF GROUND PREPARATION

A SERIES ROCKHOUND



Dumping



Skid Steer Mount



(Hydraulic) 3 Point Mount

B SERIES ROCKHOUND



Open bottom—PTO Drive. Rocks are raked to a convenient windrow for later pickup.



COST EFFECTIVE ROCKHOUNDS Rake and collect rocks and surface debris, leaving the soil in a fluffy, level, seed-bed quality condition.

It does not cost to own a Rockhound . . . IT PAYS!

1-800-426-5615

KEM ENTERPRISES, INC. 2309-A So. Tacoma Way, Tacoma, WA 98409

NEW ... HARLEY Double Roller Landscape POWER RAKE



PULVERIZES, LEVELS & RAKES ROCK, roots and other trash. Double Roller gives deeper penetration and allows moving of several windrows into one for faster pickup. **New scarifier.** Also ask us about Harley Rock Pickers.

glenmac inc.

(701) 252-9300

Toll Free 1-800-437-9779

PORTABLE REELS FOR WATERING, SPRAYING, FERTILIZING, CLIPPING, EDGING, TRIMMING

Hannay Reels on Wheels
take hose or power cable
straight to the job
and back.



FREE

Send today
for free
literature.



HANNAY REELS

CLIFFORD B. HANNAY & SON, INC., 600 EAST MAIN STREET
WESTERLO, NEW YORK 12193 • TELEPHONE (518) 797-3791

Circle No. 123 on Reader Inquiry Card

Seed Companies

continued

Bent Grass, Highland Coloniale Bent
Grass

Otto Pick & Sons Seeds Ltd
RR 2 Box 4
Winnipeg MB R3C 2E6
Canada
204-633-0088

★Pickseed West Inc

33149 Hwy 99E
PO Box 888
Tangent OR 97348
503-926-8886

Kentucky Bluegrasses: America, A-34
(Bensun), Banff, Nugget, Touchdown;
Perennial Ryegrasses: Blazer, Dasher,
Fiesta; Fescues: Mustang (Tall),
Maverick (Tall), Agram (Chewing),
Spartan & Tournament Hard, Azay
Sheep; Bentgrasses: Exeter Colonial,
Kingstown Velvet; Turfseed Mixes or
Blends: Futura Overseeding blend
(Blazer, Dasher & Fiesta Perennial
Ryegrass); Other: Canon Canada
Bluegrass

★Pioneer Hi-Bred International

PO Box 346
Savage MN 55378
Kentucky Bluegrass: Monopoly

Rothwell Seeds Ltd
PO Box 511
Lindsay ON K9V 4S5
Canada
705-324-9591

Kentucky Bluegrasses: Adelphi, Glade,
Eclipse, Rami, Harmony, Mystic, Parade,
Regent, Vanessa Welcome; Perennial
Ryegrasses: Pennant, Premier All Star,
Pennfine Manhattan, Manhattan II,
Derby; Fescues: Barfalla Chewings,
Ensyeva Creeping Red, Koker
(Chewings); Bentgrasses: Bardot,
Prominent, Pennecrosse, Penneagle,
Astoria, New Zealand Browntop;
Turfseed Mixes or Blends: Country
Green, Canadian Grade, All Purpose,
Shaded, Elite; Other: Hard Fescues, Tall
Fescues, Sheeps' Fescue

★Rugby Kentucky Bluegrass

1500 NE Jackson St
PO Box 923
Minneapolis MN 55413
612-781-8011
Kentucky Bluegrasses: Cert Rugby

★O M Scott & Sons Co Proturf Div

Marysville OH 43040
513-644-0011
Kentucky Bluegrasses: Victa, Windsor;
Other: Proturf

Seed Production & Introduction Corp (S P
I C)
PO Box 923
Minneapolis MN 55440
612-781-8011

Seed Types: Pennfine Perennial Ryegrass,
Rugby KY Bluegrass

Southern Turf Nurseries
5172A Indian Trail Ind Pkwy
Norcross GA 30091
404-448-9932

Stanford Seed Co
560 Fulton St
PO Box 366
Buffalo NY 14240
716-825-3300

Seed Types: Koket Chewings Fescue, Old
English, Crown Vetch, Pennfine
Perennial Ryegrass, Rugby KY Bluegrass

Stanford Seed Co
RD #1 Box 320
Denver PA 17517
215-267-3805

Kentucky Bluegrasses: Old English;
Perennial Ryegrasses: Old English;
Fescues: Old English; Bentgrasses: Old
English; Turfseed Mixes or Blends: Old
English

Sunbelt Seeds Inc
5172A Indian Trail Ind Pkwy
Norcross GA 30071
404-448-9932

Kentucky Bluegrasses: Baron, Adelphi,
Glade; Perennial Ryegrasses:
Marvelgreen, Palmer, Prelude, Yorktown II

★Tee-2-Green Corp

PO Box 250
Hubbard OR 97032
503-981-9574
800-547-0255
Bentgrasses: Penncross (Creeping),
Penneagle (Creeping)

Turf Plantation
202 E Washington
Jonesboro AR 72401
501-972-5549
Seed Types: Tifway 419, Tifway 328

★Turf-Seed Inc

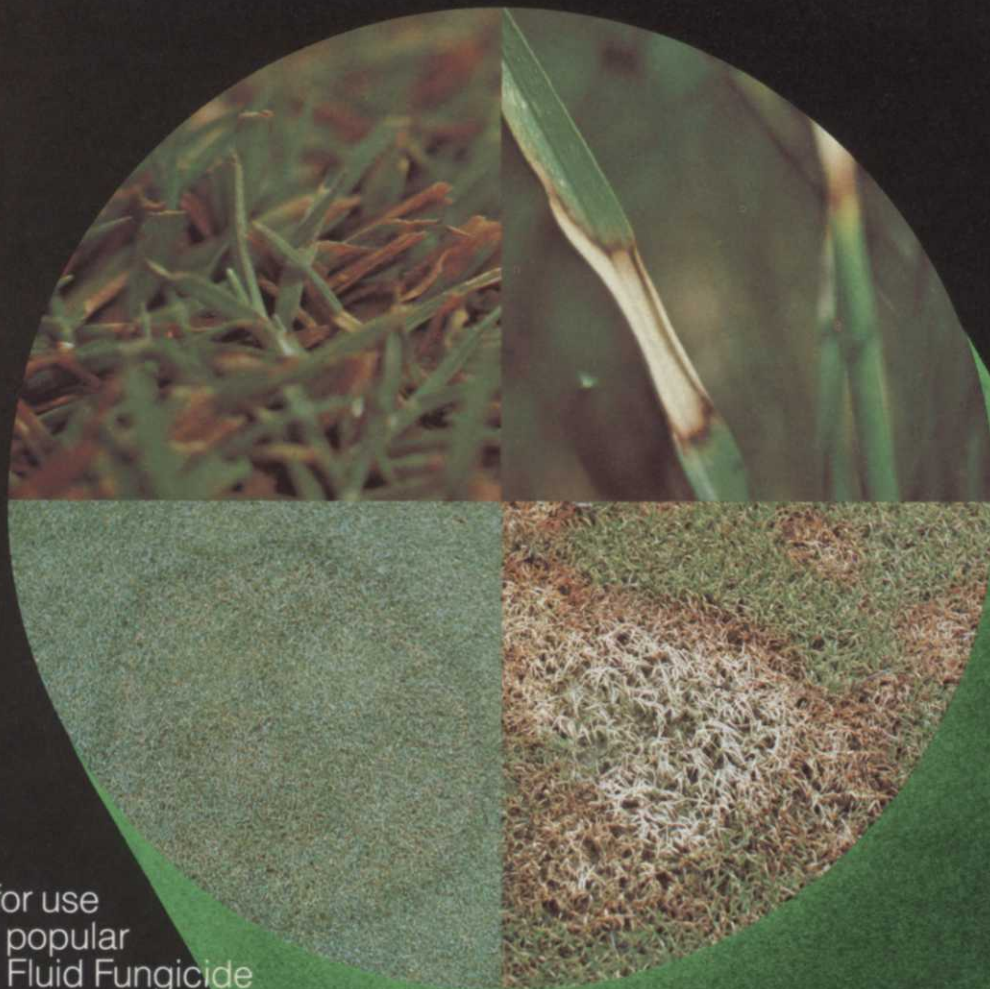
3017 W 'G' St
Hubbard OR 97032
503-981-9571
Kentucky Bluegrasses: Columbia,
Sydsport, Midnight, Bensun (A-er),
Challenger; Perennial Ryegrasses:
Citation, Omega, Birdie, Oregreen
Intermediate; Fescues: Fortress Red,
Shadow Chewings, Waldina Hard,
Aurora Hard, Olympic Tall, Falcon Tall;
Bentgrasses: Penncross Creeping,
Penneagle Creeping; Turfseed Mixes or
Blends: Polo Brand Mixture: Omega
Perennial Ryegrass, Shadow Chewings
Fescue, Manhattan Perennial Ryegrass,
Columbia KY Bluegrass, Shasta KY
Bluegrass, Waldina Hard Fescue

Vaughan's Seed Co
5300 Katrine Ave
Downers Grove IL 60515
312-969-6300

Seed Types: Adelphi KY Bluegrass,
Citation Perennial Ryegrass

NOW! Scotts® disease control quality in your spray tank.

Scotts® has developed a flowable fungicide that produces results equal to those from a complex program of six leading fungicides. The unique combination of active ingredients in Fluid Fungicide controls and prevents red leaf spot, dollar spot (including benzimidazole tolerant strains), brown patch and pink snow mold.



Developed for use on the most popular turfgrasses, Fluid Fungicide adds a new dimension to Scotts traditional dry, granular approach to turf maintenance. To find out about all its advantages, call your local ProTurf® Tech Rep.



**Cost
Effective
Flowable
Fungicide**

FOR A CHAIN SAW
THAT CAN DRILL WOOD

STIHL'S THE ONE.

Stihl's new BT-310 is a drill attachment that easily fits the powerheads of all Stihl saws from the 009 to the 038S model series, as well as the 08SQ model. Anywhere you use your gas powered Stihl, you can also have a drill without worrying about extension cords or power outlets. Wood, ice and earth augers are available. **STIHL®**

The World's Largest Selling Chain Saw.

For information write to:
Stihl Inc., Dept. 470 089, 536 Viking Drive,
Virginia Beach, Virginia 23452.

Circle No. 162 on Reader Inquiry Card

Seed Companies

continued

Vaughan's Seed Co
Chimney Rock Rd
Bound Brook NJ 08805
201-356-4200

Seed Types: Adelphi KY Bluegrass, Glade KY Bluegrass, Cheri KY Bluegrass, Merit KY Bluegrass, Touchdown KY Bluegrass, Pennant Perennial Ryegrass, Citation Perennial Ryegrass, Regal Perennial Ryegrass

★ Warren's Turf Nursery Inc Seed-Special Products Div
Cordelia & Chadbourne Rds
PO Box 459
Suisun City CA 94585
707-422-5100
Kentucky Bluegrasses: A-34 BenSun;
Fescues: Adventure (Tall)

Whitney Dickinson Seeds Inc
52 Leslie St
Buffalo NY 14211
716-896-1111

Seed Types: Pennfine Perennial Ryegrass, Manhattan Perennial Ryegrass, Manhattan II Perennial Ryegrass, Rugby KY Bluegrass



With the Lancer 350, 2 men can cover a lot of ground.

The only thing small about the Lancer 350 Hydro-Mulcher is its size. On the job, this 350-gallon unit is a giant.

In a normal work day, a two-man crew can cover:

- 4 home lawns (21,000 sq. ft.) on 6 tankloads, or
- 1 apartment or condo lawn (42,000 sq. ft.) on 12 tankloads, or
- 1 athletic field (63,000 sq. ft.) on 18 tankloads.

The Lancer 350, mounted on a single-axle trailer, handles seed, sprig, fertilizer and/or mulch operations. It comes with four nozzles and a 50' extension hose. Optional is a high-pressure pump for herbicide and fungicide application.

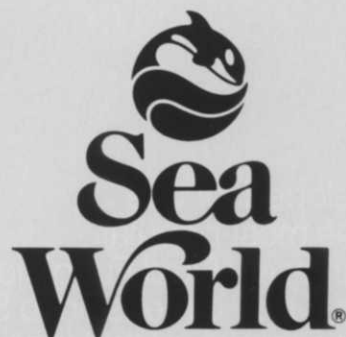


For more information, including a free catalog, write or call today.

Bowie Industries, Inc.

P.O. Box 931 Bowie, Texas 76230 817/872-2286

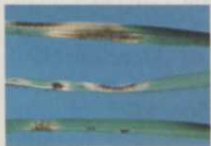
Circle No. 106 on Reader Inquiry Card



San Diego • Aurora, Ohio • Orlando

Great family fun at the most
spectacular marine life
parks in the world.

HOW TO SELL LAWN DISEASE CONTROL, AND DELIVER IT.



HELMINTHOSPORIUM LEAF SPOT



SCLEROTINIA DOLLAR SPOT



RHIZOCTONIA BROWN PATCH



FUSARIUM PATCH

Turn disease problems into profits with CHIPCO® 26019 fungicide.

Selling disease control is a great way to boost profits and attract new customers.

And CHIPCO® 26019 is the ideal product to help you do both.

The selling proposition: a beautiful, disease-free lawn.

Everything you do for a customer is designed to create a beautiful lawn.

Turf diseases look bad...and that can make *you* look bad. A programmed approach includes an effective, long-lasting fungicide like CHIPCO 26019 keeps your customers satisfied.

CHIPCO 26019 is the only fungicide you need.

It can be used safely on all lawn grasses nationwide to control the major turf diseases like leaf spot, dollar spot, fusarium and brown patch. Highly effective and long-lasting, CHIPCO 26019 fungicide fits into your treatment schedule and reduces callbacks.

In short, when you've got CHIPCO 26019 on the shelf, you're ready for *business*.

Send for FREE booklet on how to sell disease control.

We've put together a booklet that details lots of effective techniques and tools for selling disease control to your customers...and delivering it with effective, long-lasting CHIPCO 26019 fungicide.

CHIPCO® 26019 TAKING CARE OF BUSINESS

Send to: Rhône-Poulenc Inc.
CHIPCO Fungicide Lawn Care Center
P.O. Box 125 Black Horse Lane
Monmouth Junction, NJ 08852



Please send FREE *How to Sell Lawn Disease Control* booklet to:

NAME _____

TITLE _____

COMPANY _____

ADDRESS _____

CITY _____ STATE _____ ZIP _____

Circle No. 151 on Reader Inquiry Card

The Learning Season

by Ron Hall, assistant editor

By the time most people get around to making their annual resolutions, the successful nurseryman or turf manager is already hip-boot deep in planning and buying for the coming year.

The Green Industry isn't so much tied to the calendar as it is to the seasons. That's why each autumn large numbers of the Green Industry get together in conferences and trade shows.

New research, new ideas, new products, new acquaintances—looking for new ways of getting the job done and getting it done more efficiently, economically, and safely. The autumn, with the experiences and the ideas that worked and those that didn't, the satisfactions and frustrations of the busy summer still fresh in our memories, has naturally grown into the start of the new season. It's a good time to share what we've learned.

The following is a summary of some of the major events coming in the Green Industry:

NATIONAL

American Society of Landscape Architects (ASLA) 84th Annual Meeting, Nov. 17-20, Civic Plaza, Phoenix, AZ. Contact Gail Reuter, 1733 Connecticut Ave. N.W., Wash-

ington D.C. 20009, (202) 466-7730.

Interior Plantscape Association (IPA) Expo, Oct. 28-31, Opryland Hotel, Nashville, TN. Contact IPA, 2000 L. Street N.W., Suite 200, Washington D.C. 20036, (702) 296-9200.

National Institute on Park and Grounds Management Conference, Oct. 29-Nov. 1, Regency Inn, Denver. Contact Tom Luba, Box 1936, Appleton, WI 54913, (414) 733-2301. The Sports Turf Managers Association (STMA) will be convening with the National Institute Conference. STMA Program Chairman Mike Schiller plans to have pro-sports stadium grounds managers discuss their techniques.

Professional Grounds Management Society (PGMS) 72nd Conference and Trade Show, Oct. 7-10, Worcester-Mariott Hotel, Worcester, MA. Contact PGMS Headquarters, 7 Church Ln. Suite 13, Pikesville, MD 21208, (301) 653-2742.

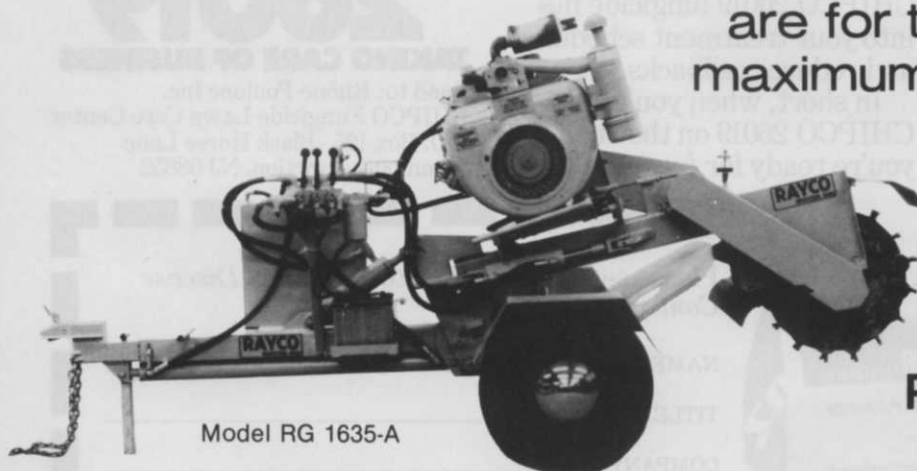
Professional Lawn Care Association of America Conference (PLCAA), Nov. 12-15, Curtis Hixson Convention Center, Tampa, FL. Contact PLCAA office, 1225 Johnson Ferry Rd., NE, Suite B-220, Marietta, GA, 30067, (404) 977-5222.

REGIONAL

North Central Turfgrass Exposition, Dec. 11-13, O'Hara

RAYCO STUMP CUTTERS

are for those who demand maximum field performance for their money.



Model RG 1635-A

To get full details on the Model that best suits your special needs . . .

Phone Toll Free Today

800-392-2686

In Ohio 800-392-2687

RAYCO MANUFACTURING, INC.

"The Stump Cutter People"

6822 Lincoln Way East • Wooster, Ohio 44691

(216) 264-8699

FYLKING
FYLKING
FYLKING
FYLKING
FYLKING
FYLKING
FYLKING
FYLKING

Remember the name because you're going to hear a lot about it. Fylking Kentucky bluegrass lawn is something special. It forms a dense, thick turf, more disease and drought resistant. Greens up earlier, stays greener longer. Fylking can be cut as low as 3/4 inch, even 1/2 inch for home putting greens. Proven over many years of international certified testing. Ask your seed distributor for Fylking.

Fylking — the World's Fair grass.

FYLKING
KENTUCKY BLUEGRASS

U.S. Plant Patent 2887

Another fine, quality-controlled
 product of Jacklin Seed Company.

**Supplies are excellent.
 The price is right.
 Order Fylking now!**

Exposition Center, Rosemont, IL. Contact Office of Continuing Education and Public Service, University of Illinois, 725 S. Wright St., Champaign, IL 61820, (217) 333-2883.

Pacific Horticultural Trade Show, Sept. 6-8, Los Angeles Convention Center, Los Angeles. Contact Elaine Thompson, California Association of Nurserymen, 1419-21st St., Sacramento, CA 95814, (916) 448-2881.

Southern Turfgrass Association Conference, Nov. 4-6, meeting at Hyatt-Regency, convention at Convention Center, Birmingham, AL. Contact Dr. Richard Duble, 3606 Meadow Oaks, Bryan, TX 77802, (409) 845-3211.

Southwest Turfgrass Association Conference, Oct. 18-19, Holy Cross Retreat, Las Cruces, NM. Contact Dr. Charles Glover, Box 3Q, Crop and Soil Science Dept., New Mexico State University, Las Cruces, NM 88003, (505) 646-3138.

STATE

California Turfgrass/Landscape Educational Exposition, Oct. 3-4, Orange County Fairgrounds, Costa Mesa, CA. Contact Ed McNeill, SCTC 1000 Concha St., Altadena, CA 91001, (818) 798-1715.

California Landscape Contractors Association (CLCA) Convention, Nov. 8-11, Ixtapa, Mexico. Contact Bob A. Gouley, 2226 K Street, Sacramento, CA 95816, (916) 448-2522.

Florida Turf-Grass Association Annual Conference and Show, Sept. 30-Oct. 3, Hyatt Regency Hotel and Curtis Hixon Convention Center, Tampa. Contact Bill Nass, Flor-

ida Turf-Grass Association, 302 S. Graham Ave., Orlando, FL 32803, (305) 898-6721.

Kentucky Turfgrass Council Conference, Oct. 9-11, Executive Inn, Owensboro, KY. Contact The Kentucky Turfgrass Council, Carter Building, Eastern Kentucky University, Richmond, KY 40475.

Missouri Valley Turfgrass Conference, Nov. 5-7, Marriott's Pavilion Hotel, St. Louis, MO. Contact Dennis Barron, president of the MVTA, Cherry Hills Country Club, 16700 Manchester Road, Glencoe, MO 63038, (314) 458-2343.

New Jersey Turfgrass Expo, Dec. 3-6, Resorts International Hotel, Atlantic City. Contact Dr. Harry W. Indyk, Soils and Crops Dept., Cook College, P.O. Box 231, New Brunswick, NJ 08903, (201) 932-9453.

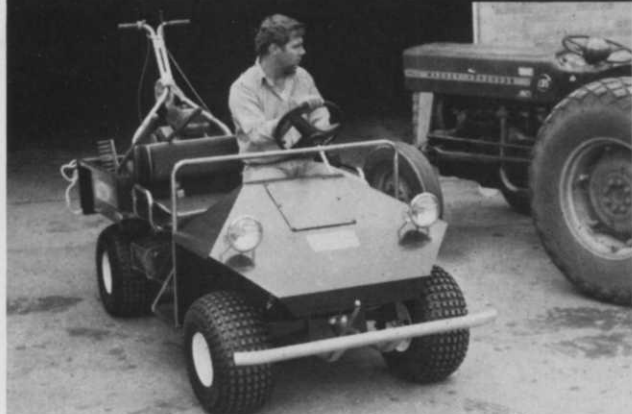
New York State Turfgrass Conference, Nov. 7-9, War Memorial, Syracuse, NY. Contact Anne Reilly, 210 Cartwright Blvd., Massapequa, NY 11762, (516) 541-6902.

Ohio Turfgrass Conference, Dec. 3-6, Ohio Center, Hyatt-Regency, Columbus, OH. Contact Dr. John Street, Kottman Hall, Ohio State University, 2021 Coffey Road, Columbus, OH 43210, (614) 422-2601.

Oklahoma Turfgrass Conference, Nov. 7-9, Lincoln Plaza Inn and Convention Center, Oklahoma City. Contact Gary Hallett, Page Belcher Golf Course, 6666 S. Union, Tulsa, OK 74123, (918) 445-1283 or Dr. Robert L. Green, Oklahoma State University, 360 Agricultural Hall, Stillwater, OK 74078, (405) 624-5419.

WT&T

Haul 500 lbs. — SAVE \$1000



"One of the best equipment values we've found in recent years."

L. Nichols, Park Superintendent
Tucson Parks and Recreation Department

Haul dirt, rocks, supplies, spare parts, people, whatever — over mud, rough terrain, down narrow passages. Heald Haulers get the tough jobs done — and at a real savings because you build Hauler from an easy-to-assemble semi-kit. You'd pay an extra \$1000 minimum for a factory-assembled vehicle with these features:

- 3- or 4-wheel models • 10, 11 or 16 H.P. engine
- Hand controls or conventional steering wheel/foot pedals • Reverse gear • Electric start • Automatic transmission • Big flotation tires
- Rear, dual disc hydraulic brakes • Accessories, including steel cab
- Dump bed (extends over 4 ft. long) or optional flatbed

CALL TOLL FREE 1-800-253-1030

For FREE catalog contact:

Carl Heald, Inc.

(In Michigan 616-849-3400)

Dept. VH8, P.O. BOX 1148,
Benton Harbor, MI 49022-1148

Circle No. 124 on Reader Inquiry Card

Olathe

SOLVE YOUR LEAF & DEBRIS PROBLEM

BLOWER MODEL 67

OUT FRONT MOWER ATTACHMENT

A Very Maneuverable
BLAST OF AIR . . .

where you need it . . .

blows paths,
parking lots,
fairways,
greens . . .
anywhere
there's
a leaf &
debris
problem.



Send
for
a
free
brochure.

OLATHE MANUFACTURING, INC.
100 INDUSTRIAL PARKWAY, INDUSTRIAL AIRPORT, KS 66031

800-255-6438
913-782-4396

Circle No. 144 on Reader Inquiry Card



SOIL HARDNESS TESTER

This tester was designed to be used with the Terracare Aerators to show the hardness of the sod and help determine the best time to aerate. It has many other applications in lawn and turf work.

TERRACARE PRODUCTS CO., INC.

P.O. Box 506
Pardeeville, WI 53954
608/429-3402

NEW

Circle No. 165 on Reader Inquiry Card

PRODUCTS

Vermeer unveils mobile tree-moving machine

A compact, highly mobile tree-moving machine, designed to transplant 5-inch diameter trees is being introduced by Vermeer Manufacturing Co. The TS-50S Tree Spade, a truck-mounted unit, features four hydraulically powered curved steel spades with a digging capacity of 50 inches in diameter down to 40 inches deep.

Four Char-Lynn hydraulic motors, plus a three-stage chain reduction drive assembly, deliver power to the spades. With the framework and spade towers on the outside, the Vermeer tree spade can be operated close



to other trees or nearby obstacles. It has a maximum height of just 72 inches.

The unit features positive, hydraulic lock/unlock creating a solid digging frame; pump feed water tanks to lubricate spades during the digging operation; double-gate pivoting for longer life; high clearance outriggers for greater stability; and hydraulically-activated, hold-down pressure plates to maintain a firm tree ball during transport.

The TS-50S is capable of being mounted on a 25,000-lb GVW-rated truck with a minimum cab-to-axle of just 84 inches.

Circle No. 190 on Reader Inquiry Card

Brouwer Triplex mower has free-floating units

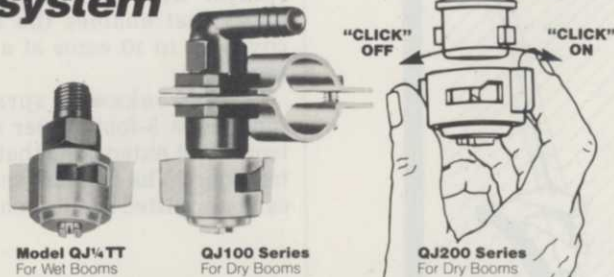
The Brouwer Triplex 376 mower is loaded with features including free-floating cutting units, anti-scalp front rollers, a differential lock, and a choice of five or seven-bladed reels.

Powered by a 8 1/2 hp Wisconsin-Robin engine, the Triplex has a 76-in.

Change spray tips clean strainers in seconds... without tools!

New

QuickJet[™] system



Model QJ 1/4 TT
For Wet Booms

QJ100 Series
For Dry Booms

QJ200 Series
For Dry Booms

New QuickJet System minimizes your service time and helps assure accurate delivery. The self-aligning quick "on/off" cap can be used with all interchangeable spray tips. The caps are available in 8 colors for color-coding different tip sizes.

QUICKJETS SAVE TIME AND MONEY.

Send for QuickJet bulletin and data sheets.



Spraying Systems Co.

Wheaton, IL 60188 Telephone 312/665-5000

Circle No. 159 on Reader Inquiry Card

TRIM YOUR LABOR COSTS...

... with Atrinal[®], the spray that keeps your shrubs the way you trimmed them.

Just trim once in the spring. Then spray *once* with Atrinal. (Where the growing season is longer, you may want to spray again in early fall.) Now hang up your pruning shears for the rest of the year.

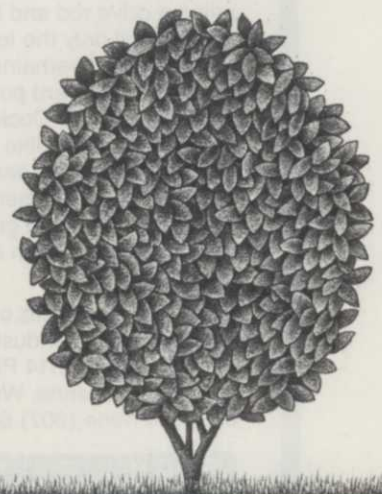
Atrinal systemic growth regulator inhibits apical bud growth, promoting lateral branching for lush, fuller plants that keep their shape. Atrinal can also be used to suppress flowering and fruit set of ornamental olives and certain other species. And application is safe and easy.

For more information, write for the Atrinal Landscape Maintenance brochure.

Atrinal[®]

Maag Agrochemicals, Inc.
P.O. Box 6430
Kings Highway
Vero Beach, FL 32961-6430
305-567-7506

Atrinal can also be used for nursery and greenhouse crops.



Circle No. 137 on Reader Inquiry Card

Slash labor costs with the Duckbill® Tree Anchoring System



Cross section of earth

One man can anchor a tree with 3 Duckbills in minutes

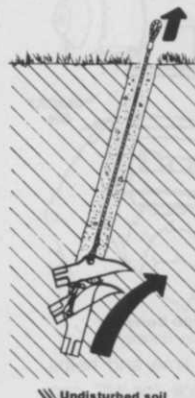
Robert L. Swain, vice president of the Dawson Corporation, landscape contractors in Windsor, New Jersey, said, "We used your Duckbill Earth Anchors to replace the deadman detail specified by the landscape architect to hold a large number of trees in place after planting. Installing the Duckbills cut the labor time by such a drastic margin that we saved a week's time with a four man crew!"

Duckbills are safer than most anchors because there are no rigid rods or hard steel loops left above ground to injure people or pets or damage mobile equipment. Only a small pliable cable loop remains above ground with Duckbills.

Duckbill is driven into the ground using a drive rod and heavy hammer till only the top half of the cable loop remains above ground. An upward pull on the cable rotates the Duckbill into a load lock position like a toggle bolt in undisturbed earth. When anchoring is no longer needed, simply cut cables at ground level, leaving no sign anchors were used.

For complete details call or write today. Foresight Industries Inc., P.O. Box 4067, 2114 Pioneer Avenue, Cheyenne, Wyoming 82003. Phone (307) 635-4163.

**FORESIGHT™
INDUSTRIES INC.**



Circle No. 117 on Reader Inquiry Card



cutting width, and the height of the cut can be adjusted from 1/2 to three inches. The cutting units can be raised or lowered from the tractor seat.

The Triplex is designed for the professional user, its manufacturer says, and it is ideal for parks, schools, golf courses, landscape maintenance, estates, and wherever grass requires routine attention.

Circle No. 191 on Reader Inquiry Card

Stauffer's Imidan 1E aimed at insect problems

Imidan 1E is being introduced by the Stauffer Chemical Co. for controlling major insect problems in shade trees, flowering trees, shrubs, and evergreens.

Imidan 1E has a quick knockdown and good residual activity, is biodegradable, and disappears from foliage after its work is done, its manufacturer says.

This product was developed after several years of tests with the assistance of a number of arborists in the Northeast.

Circle No. 192 on Reader Inquiry Card

New Cushman sprayer covers lots of ground

Cushman introduces a 150-gallon sprayer with a 21-foot rear sprayer boom that enables the operator to cover up to 10 acres at a speed of 4 mph.

The breakaway sprayer boom includes a 5-foot center section and two 8-foot extensions that fold up for transport. The dripless spray nozzles can be adjusted for 10-inch, 15-inch, or

