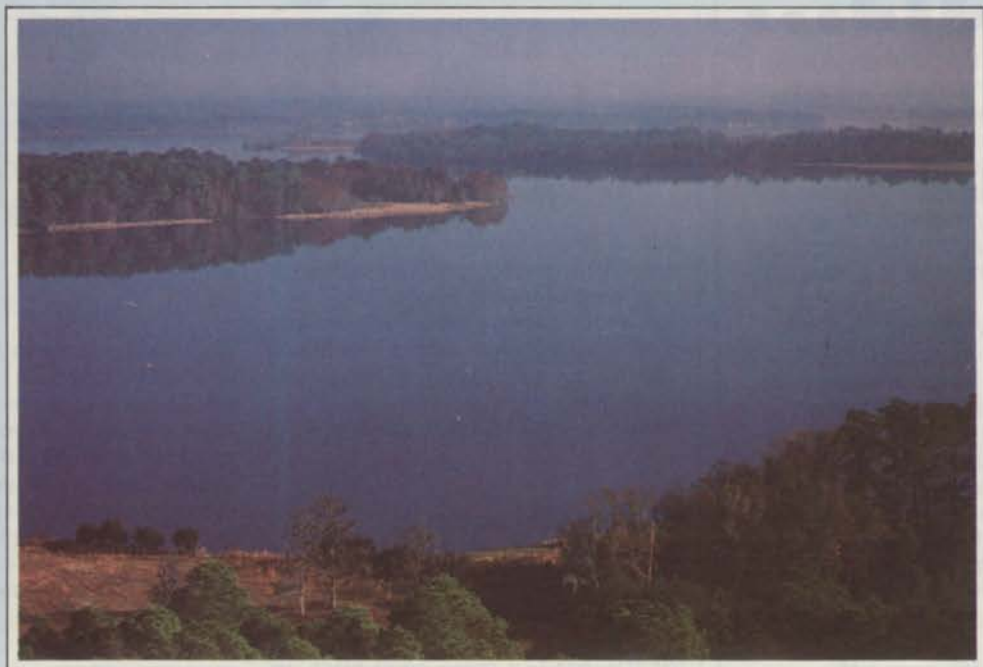


Responsible aquatic weed management



Lake Rousseau, Florida: For over ten years, water resource managers at Lake Rousseau have relied on Pennwalt aquatic herbicides, confident that they will obtain effective control of submersed aquatic weeds without harm to the aquatic environment.

Since 1960, those responsible for aquatic weed management have relied on Pennwalt aquatic herbicides and algicides. All of Pennwalt's aquatic herbicides are based on endothall, and offer these important advantages:

- **Rapidly biodegrade into natural products**
- **No bioaccumulation in the food chain**
- **Will not bind or leave residues in the hydrosol**
- **No significant movement from the treatment site**
- **Highly effective against algae and most problem submersed aquatic weeds, such as Hydrilla, Milfoil and Pondweeds**

Pennwalt's endothall formulations have a long history of being effective tools in weed management without causing adverse effects on man, other mammals, fish, shellfish or fish food organisms.

To manage your aquatic resources responsibly, you can rely on Pennwalt aquatic herbicides. Contact Pennwalt Corporation, Three Parkway, Philadelphia, PA 19102, (215) 587-7219, for more information.

Pennwalt aquatic herbicides are available in four formulations:

AQUATHOL[®] K
AQUATIC HERBICIDE
AQUATHOL
GRANULAR AQUATIC HERBICIDE
HYDROTHOL[®] 191
AQUATIC ALGICIDE AND HERBICIDE
HYDROTHOL[®] 191
GRANULAR AQUATIC ALGICIDE AND HERBICIDE

AGCHEM

PENWALT
CHEMICALS • EQUIPMENT
HEALTH PRODUCTS

TRIM YOUR LABOR COSTS...

... with Atrinal® the spray that keeps your shrubs the way you trimmed them.

Just trim once in the spring. Then spray *once* with Atrinal. (Where the growing season is longer, you may want to spray again in early fall.) Now hang up your pruning shears for the rest of the year.

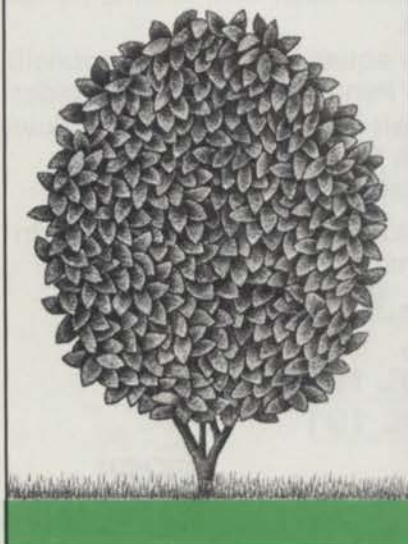
Atrinal systemic growth regulator inhibits apical bud growth, promoting lateral branching for lusher, fuller plants that keep their shape. Atrinal can also be used to suppress flowering and fruit set of ornamental olives and certain other species. And application is safe and easy.

For more information, write for the Atrinal Landscape Maintenance brochure.

Atrinal®

Maag Agrochemicals, Inc.
P.O. Box 6430
Kings Highway
Vero Beach, FL 32961-6430
305-567-7506

Atrinal can also be used for nursery and greenhouse crops.

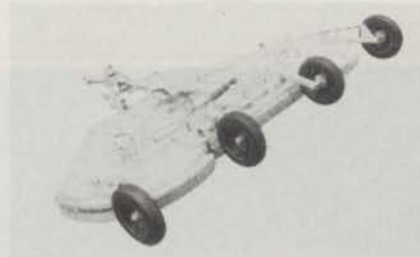


Circle No. 132 on Reader Inquiry Card

PRODUCTS

Flexwing 215 Cutter handles large tasks

Roadside maintenance, large tracts and stalk shredding are all easily handled with the FMC Corp.'s Flexwing 215, a 15-foot cutter with hydraulic lifts to raise wings for compact trans-



port. Triple spindles on this model provide maximum cutting width with minimum skipping or streaking, and the automatic parallel lift makes hook-ups quick and easy while maintaining proper levels through all height adjustments.

Circle No. 201 on Reader Inquiry Card

Harrow lift provides easy transportation

Fuerst Brothers Inc. has introduced a new harrow lift to easy transporting of the F-l-e-x-i-b-l-e Tine Harrow. The lift attaches to a three-point hitch. In the raised position, it will suspend the

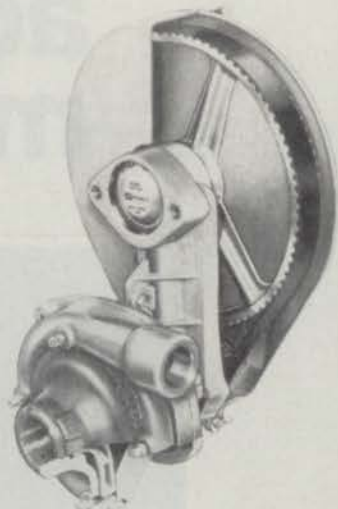


entire harrow from the rear. When the harrow is operating, the lift stays clear. It fits all Fuerst Hercules and Peerless eight, ten, and twelve-foot models.

Circle No. 202 on Reader Inquiry Card

Centrifugal pump has positive drive belt

The Hypro Series 9400 belt-drive centrifugal pump from Hypro Div., Lear Siegler Inc. features a positive drive method of power transmission for no-slip uniform output. Adjustment is simple and belts can be replaced without disturbing the PTO attachment.



The cast-iron pump is epoxy-coated to resist corrosion, and the drive mechanism is protected by a polyethylene shield. Pumps may be PTO mounted or PTO shaft-driven, and deliver either 65 or 80 gpm at 40 psi. The many corrosion-resistant features make this model especially suitable for use with certain herbicides.

Circle No. 203 on Reader Inquiry Card

Two fertilizers control turf insects

Lebanon Chemical Co. has formulated two products to fertilize and provide insect control on various turf areas. Oftanol 1.5 Granular controls both surface and subsurface insects, including grubs. It is granulated for stability in hot-weather applications, has a low solubility, and resists leaching when distributed into the soil. Oftanol is EPA approved, and has little effect on earthworm populations.



WORTH THE DIFFERENCE



Excel offers six HUSTLER models from 18 to 32 hp...the most productive lineup in the industry. HUSTLER is worth the difference!

Because real value is the basis upon which a buying decision is made, Excel would not compromise its design of the HUSTLER.

Pioneered by Excel Industries, HUSTLER dual hydrostatics and drive-wheel steering have proven to be the best drive system concept in the industry for maneuverability, traction and serviceability.

Independently driven drive-wheels counter-rotate permitting a HUSTLER to actually turn within its own radius! Now that's maneuverability you can't find on conventional steering wheel models. And, with that kind of maneuverability, you can easily mow around obsta-

cles, make square corner turns or speed down straight-aways and never miss a blade of grass.

Plus, you can choose from a multitude of attachments to meet year-round needs...from fine-cut mower decks, grass vacuuming systems and edgers, to grass thatching and snow removal attachments!

Yes, whether you select the 18 hp model 261, the 23 hp model 275, 21.5 hp model 275 LPG, 25 hp model 295, the 32 hp model 305 D or the 32 hp model 602 D... HUSTLER productivity is the key to your grounds maintenance...and value is your benefit! That's what makes HUSTLER worth the difference!



Call Toll Free,

1-800-835-3260

or write for free literature:

EXCEL INDUSTRIES, INC.

P.O. Box 7000, Hesston, Kansas 67062

GS-07S-10622



ROCKHOUND TEACHES THE ABC'S OF GROUND PREPARATION

A SERIES ROCKHOUND



Dumping

Skid Steer Mount

(Hydraulic)

3 Point Mount

B SERIES ROCKHOUND



Open bottom—PTO Drive. Rocks are raked to a convenient windrow for later pickup.

COST EFFECTIVE ROCKHOUNDS Rake and collect rocks and surface debris, leaving the soil in a fluffy, level, seed-bed quality condition.

*It does not cost to own a **Rockhound** . . . **IT PAYS!***

1-800-426-5615

KEM ENTERPRISES, INC. 2309-A So. Tacoma Way, Tacoma, WA 98409

Circle No. 126 on Reader Inquiry Card

Pro 32-3-8 25 percent SCU + Oftanol 1.5 Granular provides similar control, with the added benefit of fertilization. Circle No. 204 on Reader Inquiry Card

Mulching made simple with Bale Chopper

The Bale Chopper, from Goossen Industries, shreds and blows mulch, straw, paper, leaves, and grass with ease. Mulch or compost can be applied either with a 180-degree directional blower or with a 20-ft., six-inch-diam-



eter flexible hose. The chopper is designed for quick, even coverage of large rows or areas.

Circle No. 205 on Reader Inquiry Card

Scientific Guide To Pest Control Operations

by Dr. L.C. Truman
Dr. G.W. Bennett and
Dr. W.L. Butts



Domestic: \$32.50* (hardcover)
Foreign \$37.50* (hardcover)

The SCIENTIFIC GUIDE TO PEST CONTROL OPERATIONS is designed to provide a sound basis for studying the scientific aspects of pest control and promote technical competence. It places emphasis on urban and industrial pest problems. This volume also covers the laws and regulations concerning the pest control industry.

The SCIENTIFIC GUIDE TO PEST CONTROL OPERATIONS is written for owners, supervisors, servicemen, salesmen, students, persons preparing for state certification under the EPA/state programs for commercial pesticide applicators, and people interested in structural pest control.

The SCIENTIFIC GUIDE TO PEST CONTROL OPERATIONS - a *must* for anyone involved in the field of pest control!

Return this coupon to: Book Sales

Harcourt Brace Jovanovich Publications
One East First Street, Duluth, MN 55802

Domestic: \$32.50* (hardcover)
Foreign \$37.50* (hardcover)

YES! Please send me _____ copy(ies) of the SCIENTIFIC GUIDE TO PEST CONTROL OPERATIONS.

A check or money order for _____ is enclosed.

Please charge to my Visa, Master Card, or American Express (circle one)

Account Number _____ Expiration Date _____

*Please add \$3.00 per order plus \$1.00 per additional copy for postage and handling.

Name _____

Address _____

City _____ State _____ Zip _____

Signature _____ Date _____

Phone _____

WTT 54

Quantity rates available upon request.

Please allow 6-3 weeks for delivery

Electronic ignition simplifies starts

The Power-Start electronic ignition module from Power Lawnmower Parts Inc. is said to eliminate the need for troublesome points and condensers on most two and four cycle engines for outdoor power equipment. Modules are designed for long



continued on page 77

**The Professional Lawn Care
Association of America
1984 Conference & Trade Show
November 12-15, Tampa, Florida**



PLCAA '84 Tampa

NOVEMBER 12-15

MORE IN '84! Mark your calendar. It's not too early to start planning for the lawn care industry's biggest week of the year — the Professional Lawn Care Association of America's 1984 Show and Conference.

And what a week it will be! PLCAA '84 is shaping up to be the biggest, best gathering of powerhouse speakers and exhibitors in our five-year history. The seminar program has been expanded to offer over 16 hours of educational programming hosted by a new lineup of outstanding speakers, problem solvers all.

In addition, last year's popular "Workshop" series will offer even more hours of "how to" advice on business basics like purchasing, business expansion, and promotional techniques. Subjects aimed at boosting the bottom line of your operation.

IT'S SHOWTIME, FOLKS! Virtually every major vendor and supplier to the lawn care industry will be among the over 100 exhibitors at PLCAA '84. Longer show hours and more floor space in the beautiful Curtis Hickson Convention Center will give showgoers an unparalleled opportunity to see, touch, and compare all that's new in lawn care.

BRING THE FAMILY! Take advantage of Tampa, heart of Florida's funland. PLCAA '84 offers features, options, and vacation opportunities designed with fun in mind. Features like a special Spouse Program full of fun and surprises. Options like a week-long post-conference Caribbean cruise on the luxurious New Amsterdam, newest ship in the Holland America Line. Opportunities like a chance to visit those Florida wonderlands you've been dreaming about — Disney World, Epcot Center, and Sea World. Indicate your interest on the coupon below and details will be sent to you.

'84 is the year. Tampa is the place. Go for it!



Delta Airlines have been appointed official carrier for PLCAA '84. Delta has regular scheduled flights from most major US cities to Tampa and will be offering discounted fares to all PLCAA '84 participants — up to 30% off regular prices.

DELTA
The airline run by professionals

YES! I'm interested in attending PLCAA's 5th Annual Conference and Trade Show. Send me more information on:

REGISTRATION EXHIBITING MEMBERSHIP POST CONFERENCE CRUISE

NAME _____

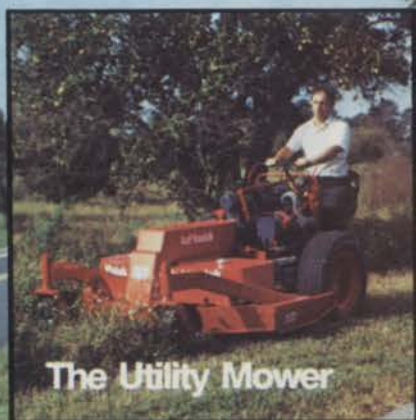
COMPANY _____

ADDRESS _____

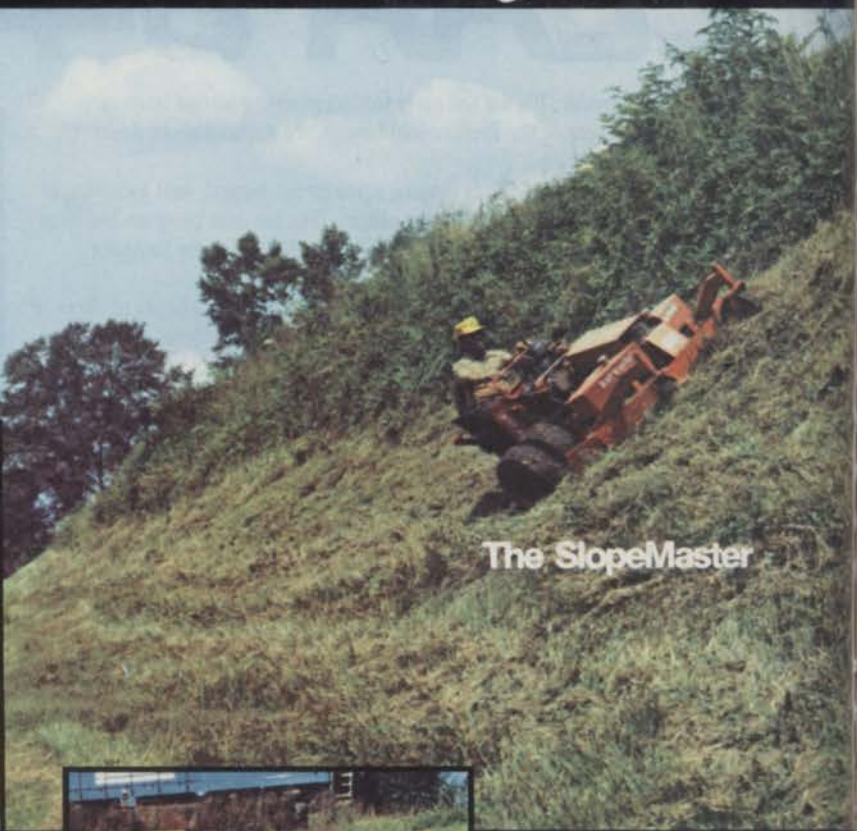
CITY, STATE, ZIP _____

Mail to: **Professional Lawn Care Association of America**
1225 Johnson Ferry Road, NE • Suite B220 • Marietta, Georgia 30067

Tough mowers... from rough cut to smooth finish.



The Utility Mower



The SlopeMaster



The HT Series



The H Series



The J Series

Built for the commercial user, to assure lowest operational cost through efficient design, low fuel consumption, low maintenance, and long life. Built to take the hard usage of the commercial mower operator and the environment in which the commercial mower functions.

kut-kwick

Brunswick, Georgia 31520
Telephone 912/265-1630

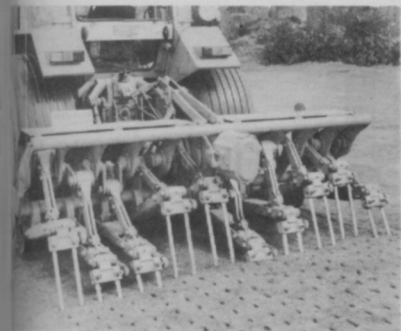
POWER START *from page 74*

life, quick starting, and easy installation and maintenance.

Circle No. 206 on Reader Inquiry Card

End soil compaction with Verti-Drain

Redexim B.V. of the Netherlands has introduced the Verti-Drain, which features 20 tines that press into the ground to a maximum depth of over 15 inches. This system is said to allow adequate absorption of air, water, and fertilizer into the soil, thus eliminating the problem of soil compaction. Verti-Drain can be mounted on the rear of a 65-hp tractor with broad tires and high elevating power.



The tines work in pairs to penetrate the soil at an adjustable angle. When they are withdrawn, a jerking motion breaks up compacted soil and rows of holes are made, which can be varied in widths. Three models range in width from 59 in. through 98-1/2 in. Circle No. 207 on Reader Inquiry Card

Diaphragm pumps make Smithco unit versatile

Smithco sprayers are equipped with Hypro diaphragm pumps that enable them to handle abrasive, granular ma-



terials, wettable powders, and corrosive chemicals without damage. Both sprayers in the line are built for low-cost operation and long wear.

The Lark Special delivers up to 9.5 gal/minute, with pressures up to 550 psi. The Hawk Special delivers up to 14.6 gal/minute, with pressures also to 550 psi. Any material sprayed in either pump has no contact with the critical moving parts, and any liquid-handling parts are epoxy coated for long wear. Pumps also run on lower

horsepower while still meeting pressure spray requirements in normal use. Circle No. 208 on Reader Inquiry Card

Chipper has power with less noise

Model 984 tree and brush chipper from Olathe Manufacturing Inc. has a 42-in.-diameter chipping drum that can turn at 750 rpm. This design al-

continued on page 82

GET THE FEELING THEY KNOW SOMETHING YOU DON'T?



They do. It's their job to know things first and then pass that information on to you fast. Things like new turf management techniques, effective methods of insect and weed control, what really works... and what won't.

LOOK FAMILIAR?

They should. You've seen them often at turf shows, seminars, conventions, wherever industry news is in the making. They're the editorial and sales management team of **WEEDS TREES & TURF**. Please meet (seated l. to r.) Ron Kempner, Bruce Shank, Dick Gore, and Maureen Hrehocik; (back row l. to r.) Bob Mierow, Kevin Cooney, Joe Kosempa, and Bob Earley.

THERE'S NO GRASS GROWING UNDER THEIR FEET.

They apologize for not always being in when you call, but great stories are found in the field, not in the office. These pros know the only way to really cover the green industry is to get out and be a part of it. From turf test plots in Oregon to the corridors of our Nation's Capital, they're following leads, surveying markets and interviewing the

landscape professionals who make our industry hum. Then, they use their years of experience to pull it all together, analyze it and present it to you in a crisp, easy-to-read and easy-to-use style. That way, you have the information you need to do your job better, faster and more effectively.

The next time you want to know something in the green industry, give them a call. If you can't reach them at the office, don't worry. They'll reach you in the pages of **WEEDS TREES & TURF**.

WEEDS TREES & TURF

HBJ A HARCOURT BRACE JOVANOVIICH PUBLICATION

3091 Maple Drive, Suite 312, Atlanta, GA 30305
(404) 233-1817

— A GREAT MEDIUM TO GROW PROFITS IN. —



Powerful new medicine for turf diseases

VORLAN™ is Mallinckrodt's newest, toughest turf fungicide.

Enough experience has been gained with Vorlan by now — on golf courses and in university trials — to confirm that it establishes new standards of performance. Against Leaf Spot, Red Thread, Dollar Spot (even resistant strains!), and Pink Snow Mold, Vorlan delivers more effective control than any other fungicide available.

Vorlan's effectiveness — because it takes so little and lasts so long — also makes it economical, too.

If you haven't yet tried Vorlan, you should. Call Mallinckrodt toll-free, or contact your Mallinckrodt Turf Products distributor. No prescription is needed!

Mallinckrodt®

P. O. Box 5439
St. Louis, MO 63147
(800) 325-7155

Circle No. 176 on Reader Inquiry Card

For fastest response, use the peel-off label from the front cover.

WEEDS TREES & TURF

MAY 1984

This card expires July 15, 1984

NAME _____

TITLE _____

FIRM _____

PLACE COVER LABEL HERE

ADDRESS _____

CITY _____

STATE _____ ZIP _____

MY PRIMARY BUSINESS AT THIS LOCATION IS:
(PLEASE CHECK ONE ONLY IN EITHER A, B OR C)
A. LANDSCAPING/GROUND CARE AT ONE OF THE FOLLOWING TYPES OF FACILITIES:

- 0005 Golf courses
- 0010 Sport complexes
- 0015 Parks
- 0020 Rights-of-way maintenance for highways, railroads & utilities
- 0025 Schools, colleges & universities
- 0030 Industrial & office parks/plants
- 0045 Condominiums/apartments/housing developments/hotels/resorts
- 0050 Cemeteries/memorial gardens
- 0060 Military installations & prisons
- 0065 Airports
- 0070 Multiple government/municipal facilities
- Other type of facility (please specify) _____

B. CONTRACTORS/SERVICE COMPANIES/CONSULTANTS:

- 0105 Landscape contractors (installation & maintenance)
- 0110 Lawn care service companies
- 0125 Landscape architects
- 0135 Extension agents/consultants for horticulture
- Other contractor or service (please specify) _____

C. SUPPLIERS:

- 0205 Sod growers
- 0210 Dealers, Distributors
- Other supplier (please specify) _____

Approximately how many acres of vegetation do you maintain or manage? _____

What is your title? (please specify) _____

I would like to receive (continue receiving) WEEDS TREES & TURF each month: YES NO

Your Signature: _____ Date: _____

101	116	131	146	161	176	191	206	221	236	251	266	281
102	117	132	147	162	177	192	207	222	237	252	267	282
103	118	133	148	163	178	193	208	223	238	253	268	283
104	119	134	149	164	179	194	209	224	239	254	269	284
105	120	135	150	165	180	195	210	225	240	255	270	285
106	121	136	151	166	181	196	211	226	241	256	271	286
107	122	137	152	167	182	197	212	227	242	257	272	287
108	123	138	153	168	183	198	213	228	243	258	273	288
109	124	139	154	169	184	199	214	229	244	259	274	289
110	125	140	155	170	185	200	215	230	245	260	275	290
111	126	141	156	171	186	201	216	231	246	261	276	291
112	127	142	157	172	187	202	217	232	247	262	277	292
113	128	143	158	173	188	203	218	233	248	263	278	293
114	129	144	159	174	189	204	219	234	249	264	279	294
115	130	145	160	175	190	205	220	235	250	265	280	295

Circle the Reader Service numbers of those items of interest to you.



BUSINESS REPLY CARD

FIRST CLASS PERMIT NO. 665 DULUTH, MINNESOTA

POSTAGE WILL BE PAID BY ADDRESSEE

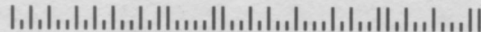
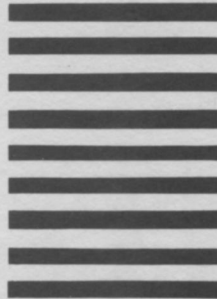
READER SERVICE DEPARTMENT

WEEDS TREES & TURF

POST OFFICE BOX 6049

DULUTH, MINNESOTA 55806-9749

NO POSTAGE
NECESSARY
IF MAILED
IN THE
UNITED STATES



GET
MOR
FACT