

Inquiries serviced for 90 days from date of issue. For those countries outside the U.S., please apply appropriate postage before mailing.

# READER SERVICE INFORMATION CARD 3-83<sup>2</sup>

For more information on products or services mentioned in this issue, circle the corresponding numbers below, fill in appropriate information and mail today.

101	108	115	122	129	136	143	150	157	164	171	178	185	192	199	206	213	220	227	234
102	109	116	123	130	137	144	151	158	165	172	179	186	193	200	207	214	221	228	235
103	110	117	124	131	138	145	152	159	166	173	180	187	194	201	208	215	222	229	236
104	111	118	125	132	139	146	153	160	167	174	181	188	195	202	209	216	223	230	237
105	112	119	126	133	140	147	154	161	168	175	182	189	196	203	210	217	224	231	238
106	113	120	127	134	141	148	155	162	169	176	183	190	197	204	211	218	225	232	239
107	114	121	128	135	142	149	156	163	170	177	184	191	198	205	212	219	226	233	240

MY PRIMARY BUSINESS AT THIS LOCATION IS:  
(PLEASE CHECK ONE ONLY IN EITHER A, B OR C)

## A. LANDSCAPING/GROUND CARE AT ONE OF THE FOLLOWING TYPES OF FACILITIES:

- 0005  Golf courses  
0010  Sport complexes  
0015  Parks  
0020  Rights-of-way maintenance for highways, railroads & utilities  
0025  Schools, colleges & universities  
0030  Industrial & office parks/plants  
0045  Condominiums/apartments/housing developments/hotels/resorts  
0050  Cemeteries/memorial gardens  
0060  Military installations & prisons  
0065  Airports  
0070  Multiple government/municipal facilities  
 Other type of facility (please specify) \_\_\_\_\_

## B. CONTRACTORS/SERVICE COMPANIES/CONSULTANTS:

- 0105  Landscape contractors (installation & maintenance)  
0110  Lawn care service companies  
0125  Landscape architects  
0135  Extension agents/consultants for horticulture  
 Other contractor or service  
(please specify) \_\_\_\_\_

## C. SUPPLIERS:

- 0205  Sod growers  
0210  Dealers, Distributors  
 Other supplier (please specify) \_\_\_\_\_

Approximately how many acres of vegetation do you maintain or manage?  
\_\_\_\_\_

What is your title? (please specify) \_\_\_\_\_

YOUR NAME \_\_\_\_\_

BUSINESS NAME \_\_\_\_\_ BUSINESS ADDRESS \_\_\_\_\_

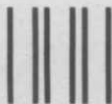
CITY \_\_\_\_\_ STATE \_\_\_\_\_ ZIP \_\_\_\_\_ TELEPHONE (\_\_\_\_) \_\_\_\_\_

AREA CODE

I WISH TO RECEIVE (CONTINUE RECEIVING) WEEDS, TREES & TURF EACH MONTH  YES  NO

SIGNATURE \_\_\_\_\_ DATE \_\_\_\_\_

Circle  
the  
Reader  
Service  
numbers  
of those  
items of  
interest  
to you.



**BUSINESS REPLY CARD**

FIRST CLASS PERMIT NO. 665 DULUTH, MINNESOTA

POSTAGE WILL BE PAID BY ADDRESSEE

READER SERVICE DEPARTMENT

**WEEDS TREES & TURF**

POST OFFICE BOX 6049

DULUTH, MINNESOTA 55806

NO POSTAGE  
NECESSARY  
IF MAILED  
IN THE  
UNITED STATES



**GET  
MORE  
FACTS**

## EVENTS

To insure your meeting date occurs in the current issue of **WEEDS TREES & TURF**, please forward it at least 90 days in advance to **WEEDS TREES & TURF Events 7500 Old Oak Blvd., Middleburg Heights, OH 44130**

**Associated Landscape Contractors of Massachusetts** and the Cooperative Extension Service of the University of Massachusetts Annual Exposition, Glen Ellen Country Club, Millis, MA. **March 1-9.** Contact ALCM, 1357 Washington St. #7, West Newton, MA 02165 964-0452.

**Horticultural Industries Conference**, University of Minnesota, St. Paul, MN. **March 2,3,4.** Contact Office of Special Programs, (612) 373-0725.

**USGA Green Section Regional Conference** (North Central), St. Paul, MN. **March 8.**

**Club Managers Association of America** Annual Conference, Caesar's Palace, Las Vegas. **March 13-15.** Contact CMAA, 7615 Winterberry Place, Bethesda, MD, 20817. (301) 229-3600.

**Annual Canadian Turfgrass Show**, Edmonton Inn, Edmonton, Alberta, Canada. **March 13-16.** Contact Canadian Golf Course Superintendents Association, 698 Weston Rd. Suite 32, Toronto, Ontario M6N 3R3, (416) 767-2550.

**Maine Turf Conference**, South Portland Merry Manor. **March 16-17.** Contact Dr. Vaughn Holyoke, Deering Hall, University of Maine, Orono, ME 04469, (207) 581-2111.

**Sixth Turf Conference and Equipment Show and Service Clinic.** Waukesha Co Exposition Center, Waukesha, WI. **March 16-17.** Contact Reinders Bros. Inc., Ed Devinger, Turf Division, 13400 Watertown Plank Rd., Elm Grove, WI 53122. (414) 786-3300.

**USGA Green Section Regional Conference** (Southern) Ft. Lauderdale, FL. **March 17.**

**74th Annual Mississippi Valley Conference of State Highway and Transportation Department**, Hyatt Regency Hotel, Milwaukee, WI. **March 21-24.** Contact Harvey Shebesta, District Director, Wisconsin Dept. of Transportation, 310 South West Ave., PO

Box 649, Waukesha, WI 53187 (414) 548-5681.

**Cooperative Extension Service**, Ohio State University, Brooklyn Heights City Hall, 345 Tuxedo Ave., Cleveland, OH. (216) 631-1890. **March 24.** Fred Buscher, "Planting: Balled & Burlaped, Containers, Materials;" Nick

Stephin, "Common Diseases and Plant Physiology of Ornamentals;"

**ALCA Student Field Days**, Richland College, Dallas, TX. **March 25-27.** Contact Dept. of Landscape Architecture, Mississippi State University, Briscoe Hall, PO Drawer MX, Mississippi State, MI (601) 325-3012.



## New Waldon Landscaping Special. The 4100.

If your skidsteer or light-duty loader is eating your lunch with high downtime or high operating expenses, here's a new solution.

Waldon builds the toughest, most dependable and most expensive compact loaders in the U.S. Now, they've developed a tough but lower

priced 1/2 yard loader. It's dependable but not expensive.

The Model 4100. It'll deliver high productivity at lower operating costs.

Send for new literature today.

1/2 yd. capacity, four-wheel-drive



**WALDON**



Waldon, Incorporated • Fairview, Oklahoma 73737 • 405-227-3711

Circle No. 169 on Reader Inquiry Card



**NEW!**

# Oscillating Disc Blade Turf Edger

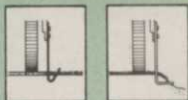
*Safer by far than spinning blade edgers...faster too!*



MODEL N EDGE-R-RITE

No spinning blade to throw debris. Oscillating disc blade cuts on forward and backward strokes. Cleanly slices turf edges.

Optional right angle and V-blades



**TURFCO Sod Master**

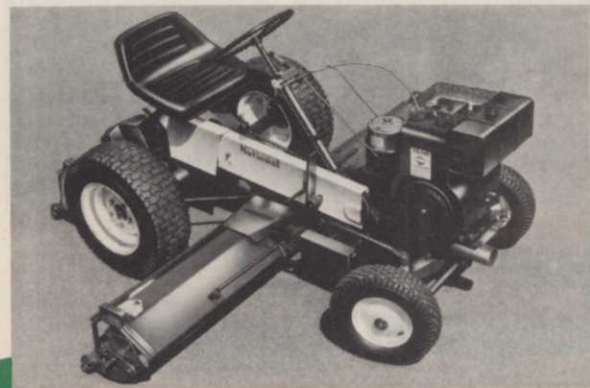
3456 N. Washington Ave.  
Minneapolis, MN 55412  
612/588-0741

## LETTERS from page 89

such as peat, might be acceptable in certain parts of the southeast, those same greens could be a real problem in Kansas, West Texas, or the mountain states. For example, while we have no objections to greens with percolation rates of between 6 inches per hour and 10 inches per hour in the east, we try to keep our greens on the lower side of the U.S.G.A. recommendation, namely in the 3 inches to 5 inches per hour range, when building greens in drier, windier climates. But you won't know what your percolation rate is unless you have the mixture tested!

To accomplish the lower percolation rate normally means the incorporation either of fine sands or the incorporation of native soils, or calcined clay fines, should they be available and economical. "Uniformly dirty" sands are just not usually available. We like the calcined clay fines for the simple reason that they are non-plastic, are easily mixed, have a good moisture retention capacity, and have ion-exchange capability. Although some agronomists do not like the use of calcined clay in any form, Dr. Bill Daniel at Purdue has had excellent results in the use of this material based on his research going back to 1956. And we have had excellent results with it on many courses.

Another very important matter to watch out for, and not covered completely in Architect Fream's article, is the quality of the organic material being use. Many products on the market, and some natural products which unfortunately get mixed with the soil on which they are deposited, have a high clay and silt content themselves. Or they may have a very high ash content. Other materials, such as lignitic material, or "muck" have particle sizes so small that they can actually be detrimental to the mixture and plug up the pores



**National Reel Mowers cost less to buy cost less to keep!**

■ National's initial cost is less than that of mowers sold to do the same job.

■ Less down time. Standard off-the-shelf items like belts and bearings that are available from any local industrial supplier.

■ Greater fuel economy. 44% to 62% less fuel consumption than power-robbing, hydrostatic type rotary mowers.

■ One-third to one-half the cost of maintaining a National versus competitive rotary models.



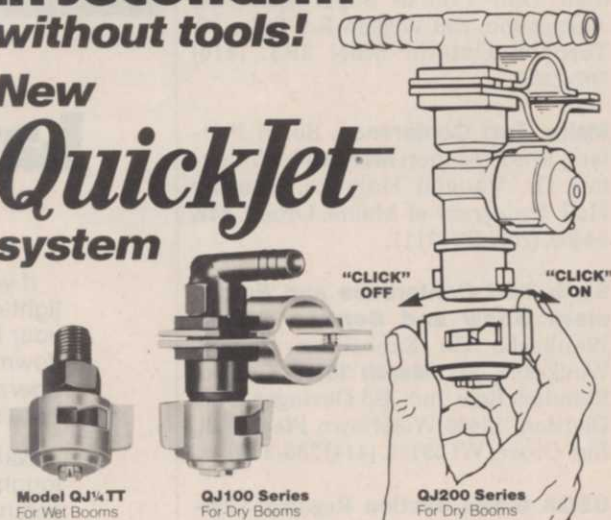
SINCE 1919  
**NATIONAL MOWER COMPANY**

660 Raymond Avenue  
St. Paul, MN 55114  
612/646-4079

Circle No. 141 on Reader Inquiry Card

**Change spray tips clean strainers in seconds... without tools!**

New **QuickJet** system



Model QJ $\frac{1}{4}$ TT For Wet Booms

QJ100 Series For Dry Booms

QJ200 Series For Dry Booms

New QuickJet System minimizes your service time and helps assure accurate delivery. The self-aligning quick "on/off" cap can be used with all interchangeable spray tips. The caps are available in 8 colors for color-coding different tip sizes.

**QUICKJETS SAVE TIME AND MONEY.**

Send for QuickJet bulletin and data sheets.



**Spraying Systems Co.**

Wheaton, IL 60187 Telephone 312/665-5000  
Circle No. 155 on Reader Inquiry Card



of the seedbed worse than clay or silt. The plugging action is not so much from a particle size standpoint, but by having a specific gravity lower than one, they are easily floated to the surface to form a barrier. We have seen organic materials offered on the market which were less than 50% organic, as determined by laboratory ignition loss. We urge that the organic material used for greens construction have an ignition loss of at least 90%.

And the argument over "on-site" versus "off-site" mixing will go on for some years yet. The U.S.G.A. recommends only off-site mixing so that "great homogeneity" can be obtained. We have found that you can have as many problems with off-site mixing as you can with on-site, particularly if the operator mixing off-site is not careful and mixes topsoil from underneath the stack with the seedbed itself. A paved surface for mixing is usually not available. "On-site" mixing has its place, particularly when one is trying to mix one part of material A into four parts or six parts of material B. Careful rototilling of A into the top 5 or 6 inches of B, and checking the degree of mixing, can produce excellent results on putting greens.

The problem with on-site mixing comes when people try to mix one part of material A with one, two, or even three parts of material B. But when the major material to be mixed is sand, and the minor material being mixed in is either calcined clay fines, peat, or other organic materials, and you're only using up to 20% of these organic materials, it's pretty difficult to go wrong if the rototilling is reasonably thorough. The savings to be obtained are great, as you do not have to put the same expensive additives in the bottom six inches.

*Continued on page 98*

**Dobbins is the  
workhorse  
for the  
working  
pro.**



If you need a day-in-day-out performer that'll handle all kinds of spraying jobs, get the workhorse. A Dobbins power sprayer. Every Dobbins is built smart and tough to help you cut any spraying job down to size.

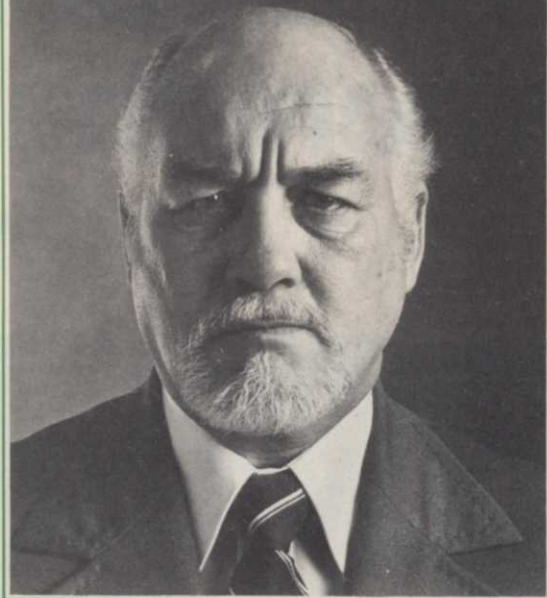
- **Professional design**... adjustable nozzle, easy-fill tank.
- **Heavy-duty**... made with non-corrosive materials for years of reliable service.
- **Complete line**... from 8 gal. to 300 gal. capacities, skid mounted and trailer type models.

To put a Dobbins power sprayer to work for you, see your local power equipment dealer, call us collect, or write us for free catalog information.

Master Manufacturing Co.  
P.O. Box 694, Dept. WTT383  
Sioux City, Iowa 51102  
712/258-0108

**D DOBBINS**  
**POWER**  
**SPRAYER**  
**THE WORKHORSE**

Circle No. 132 on Reader Inquiry Card



## How to Please the Chairman

And all the rest of the Board at the Country Club. Select Fylking Kentucky bluegrass for fairway seeding, overseeding, sodding. Beautiful, low growing, requires less mowing and nutrients. And — it's an elite bluegrass that costs less.



**FYLKING**  
**KENTUCKY BLUEGRASS**

U. S. Plant Patent 2887

Another fine, quality-controlled  
product of Jacklin Seed Company.

Circle No. 125 on Reader Inquiry Card

MARCH 1983/WEEDS TREES & TURF 95



# When SENCOR goes where the goosegrass grows . . .





# the goosegrass goes.



Apply <sup>®</sup>SENCOR 75 Turf Herbicide to your actively growing bermudagrass turf at the recommended rate at the recommended time and it's goodbye, goosegrass.

SENCOR is formulated as a dry flowable herbicide for easy mixing and application with

standard spraying equipment. SENCOR works two ways to effectively control goosegrass in bermudagrass—by contact

activity and root uptake.

Applied prior to dormant turf, SENCOR also controls such broadleaf winter annual weeds as common chickweed, corn speedwell, henbit, parsely-piert, and spur weed. Ask your turf chemicals distributor for SENCOR 75 Turf Herbicide.



SENCOR is a registered TM of the Parent Company of Farbentfabriken Bayer GmbH, Leverkusen



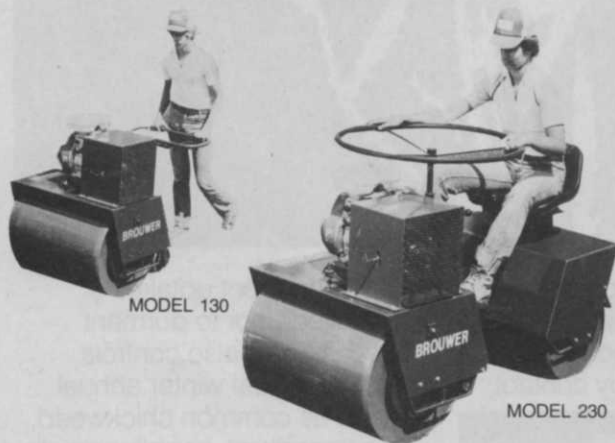
**Mobay Chemical Corporation**  
Agricultural Chemicals Division  
Specialty Products Group  
Box 4913, Kansas City, MO 64120

**THE  
BROUWER SOD CUTTER  
Will Cut It**



Simple design makes operation, adjustment and repairs easy. Folding handles and kickstand for compact, stable transport and storage.

**THE  
BROUWER TURF ROLLERS  
Will Roll It**



Thirty inch rollers with special rounded edges eliminate turf damage. Equipped with hydrostatic drive - saves time, trouble and labour cost.

**BROUWER  
TURF EQUIPMENT LIMITED**

7320 Haggerty Rd./Canton, MI. U.S.A. 48187 Telephone (313) 459-3700  
Woodbine Avenue/Keswick, Ontario, Canada L4P 3E9

Telex 065-24161 Telephone: (416) 476-4311

Circle No. 104 on Reader Inquiry Card

**LETTERS** from page 95

where it generally is fairly inert anyhow.

Some of the best agronomists I have talked with agree that the major portion of turf control on greens is in the top three inches to four inches, and what is down below that is relatively unimportant as long as it drains. Excessive drainage is undesirable, as some capillarity must be available for "feed-back" of water from the perched water table to the roots of the plant above.

I fully agree with Architect Fream that one of the most important matters in the future maintenance of greens is the topdressing. Topdressing materials should be the same as the initial mixture for the greens. Any change should only be done after consultation with experts in greens construction, such as the U.S.G.A. Green Section. We can often tell exactly when the green committee or the superintendent was changed by looking at the profile of greens which have been in existence for six to twelve years or more.

In short, the proper construction of golf greens is a matter of both aesthetics, the game of golf, engineering, and a very special agronomy. It is not a job for ordinary landscape architects, golf course superintendents (who might have the agronomy expertise but not the design expertise), or even touring pros, who might know the game of golf but not know the agronomy! This is where the golf course architect, in conjunction with the Greens Section arm of the U.S.G.A., should have control.

I trust your readers understand this.

Joseph S. Finger, P.E.  
Golf Course Architect  
Houston, TX 77040

**GT-77 for Garden Tractors  
NOW AVAILABLE W/3 PT. HITCH**



**CAT. O.  
UPON  
REQUEST**

**HITCHES  
MADE FOR  
3 WHEELERS  
& ATC's  
MODEL  
GT-77  
77 LBS.  
CAPACITY**

**MODEL 750  
9.6 BU. CAPACITY**

**Herd**

**has seeders for  
all your needs.  
Seven different  
models ... means  
a size to fit  
your job.**

**WRITE FOR  
COLOR CATALOG**



**HERD SEEDER CO., INC., DEPT. 278  
P.O. BOX 448, LOGANSPORT, INDIANA 46947**

Circle No. 121 on Reader Inquiry Card





# TO LEARN ABOUT TREES, OUR PEOPLE START WITH A BOARD.

There's more to tree care than meets the eye.

That's why Davey Tree personnel undergo thorough classroom training at the Davey Institute of Tree Sciences. As well as extensive field training.

Something many other tree care companies can't do.

Our supervisors learn insect and disease control. Diagnosis. Tree care production, planning, and quality control.

This way our crews know how to work on your commercial or municipal property safely and correctly.

Of course, the advantages don't stop there. On the job Davey offers the latest equipment and technology. Free technical advice from our Research and Development Center. And our famous ARBOR-GREEN® two-year fertilizer, available only from Davey.

Put it together, and you can see why Davey's Total Program of grounds maintenance gives you so much more for your money, service for service.

For a new or ongoing tree care program, Davey can work for you.

Look us up in the Yellow Pages. Or write to: Donald J. Shope, VP Tree Care Services, Davey Tree, 117 S. Water Street, Kent, Ohio 44240.

Because you see, trained people backed up by a technical staff cost you no more.

Davey Tree. We don't just care for trees. We learn how to care for them better.

**DAVEY TREE**  
Kent, Ohio • Coast to Coast and Canada  
Keeping America Green Since 1909.



# PRODUCTS

## Utility backhoe is for Model 6510

Ditch Witch has made available a utility backhoe for its Model 6510 underground construction equipment. Model A620 can dig to depths of 109 inches, has a 180 degree swing arc and reach of 154 inches. The backhoe mounts on the front of the vehicle; the rear can

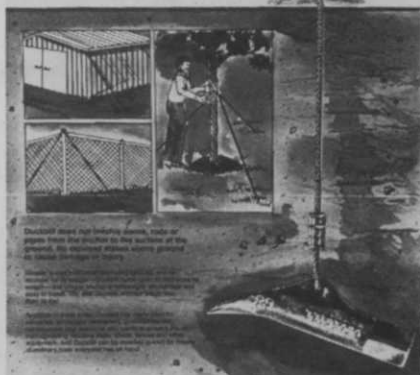
employ either a trenching module, vibratory plow module or combination of both.

Circle No. 175 on Reader Inquiry Card

## No stakes left above ground

Duckbill earth anchors from Foresight Industries are made of a lightweight aluminum alloy and hold up to 10,000

If you don't want it blown away anchor it with Duckbill Earth Anchors



times their weight. Used to anchor trees, sheds, fences, bins, towers, tents, scaffolding, winch anchors, retaining walls, picnic tables, playground equipment, embankment tiedowns and other equipment, Duckbill anchors can be installed quickly with ordinary tools. They do not involve stems, rods or pipes so no stakes are left above ground to cause damage or injury.

Circle No. 176 on Reader Inquiry Card

## Designed for high maneuverability

Bolens Corp.'s Articulator has a pivoting frame to cut around trees, fences and shrubs. The frame steer rear en-

*Continued on page 102*



Forecast Easing Spring Chores	<b>★ EXTRA ★</b>	Forecast Peace of Mind Fertilizing
Milorganite — America's Foremost Naturally Organic Fertilizer		

# Milorganite® solid thinking when thinking of solids

**MILORGANITE is a Proven, Natural Organic Turf Food that will fit into your Lawn Service Program.**

- Slow nitrogen release is based on activity by soil microorganisms. They work at the same temperatures and moisture levels which encourage grass growth — no more, no less.
- There are no soluble salts in Milorganite so it cannot burn the turf. "Watering in" is not necessary.
- Early winter applications stay in place, waiting for soil warmup in spring. This frees you for other early spring operations. The Milorganite will be ready to go when the grass is ready to grow.

- Spreader calibration is easy, because Milorganite is bulky. Just set any spreader wide open to apply 1 to 1½ lbs. of actual nitrogen per 1,000 sq. ft. depending on walking speed.
- Over 60 distributors assure nationwide availability.

**AND BEST OF ALL** Milorganite promotes excellent turfgrass color and density wherever you may be. This has been proven in service to the turf industry since 1926.



**MILWAUKEE METROPOLITAN SEWERAGE DISTRICT**  
735 N. Water Street  
Milwaukee, WI 53202

Circle No. 133 on Reader Inquiry Card