

WOODS

T42 Rotary Tiller

The reliable helpmate

No matter what kind of soil preparation help is needed, the Woods Model T42 Rotary Tiller will provide it. Gardening, landscaping or small farming are all made easier by the remarkable features built into this profitable dirt buster.

It will till a 42" wide path down to 8" deep cleanly and easily with direct gear-drive and a unique blade design. Its spring-loaded tailgate leaves tilled soil in smooth, ready-to-plant condition.

It's easy to hook up with exclusive 2-point mounting. And it will work on any 16-25 hp tractor with a Category 1, 3-point hitch and 540 rpm PTO.

Like all Woods products, the Model T42 Rotary Tiller is built tough to take punishment and is virtually maintenance-free.

Put the Woods Model T42 to work for you and your customers. Send for complete specifications today.

Woods
Model T50
Rotary Tiller
works a
50" swath.



Division of Hesston Corporation
Oregon, Illinois 61061

Woods products are backed with 35 years of dependable quality.

Circle No. 158 on Reader Inquiry Card

FEBRUARY 1983/WEEDS TREES & TURF 81

When SENCOR goes where the goosegrass grows . . .



the goosegrass goes.



Apply [®]SENCOR 75 Turf Herbicide to your actively growing bermudagrass turf at the recommended rate at the recommended time and it's goodbye, goosegrass.

SENCOR is formulated as a dry flowable herbicide for easy mixing and application with

standard spraying equipment. SENCOR works two ways to effectively control goosegrass in bermudagrass—by contact

activity and root uptake.

Applied prior to dormant turf, SENCOR also controls such broadleaf winter annual weeds as common chickweed, corn speedwell, henbit, parselypiert, and spur weed. Ask your turf chemicals distributor for SENCOR 75 Turf Herbicide.



SENCOR is a registered TM of the Parent Company of Farbenfabriken Bayer GmbH, Leverkusen

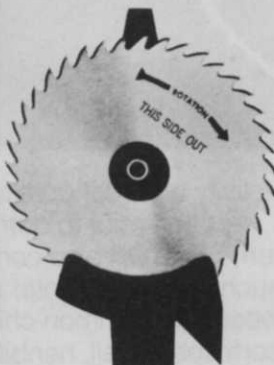


Mobay Chemical Corporation
Agricultural Chemicals Division
Specialty Products Group
Box 4913, Kansas City, MO 64120

DON'T CUT OUT QUALITY.

DO IT RIGHT, WITH STANLEY.

Quality, by our standard, is something which goes a lot further than making tools. To Stanley, it means: a full line of tree trimmers for every job; the best warranty in the business; complete parts backup; and distributors to help you anywhere in the country. It's also the efficiency, safety and dependability of hydraulic power. We don't trim on anything so that you're able to do your trimming faster. Stanley Hydraulic Tools: 3810 S.E. Naef Road, Milwaukie, Oregon 97222. Phone (503) 659-5660. Telex 360771. Write or call.



STANLEY

management, high school athletic field maintenance, customer turnover, identifying pesticide injury, troubleshooting lawn problems and sprayer maintenance.

Also on Thursday morning, a special General Session will be devoted to presentations on aquatic weed control and pond management in the environment, pH and pesticide stability and growth retardants.

Pre-registration is \$45, registration at the door is \$50 and includes educational sessions and admittance to the Trade Show. For more information, contact Christine E. King, Pennsylvania Turfgrass Council, 412 Blanchard St., Bellefonte, PA 16823.

CHEMICALS

Diamond Shamrock tags Mitchell for V.P.

Kenneth P. Mitchell has been named vice president of the Specialty Chemicals Group of the newly-formed Chemical Unit of Diamond Shamrock Corporation, a Cleveland-based commodity and specialty chemicals operation.

Mitchell joined Diamond Shamrock

in 1964 as a salesman. Prior to his new position, he served as vice president/general manager of the Process Chemicals Division. In his new capacity, Mitchell will be responsible for the company's agricultural chemicals, animal health process chemicals and metal coatings divisions, as well as Duolite International.

SEED

Walkiewicz tapped for ASA presidency

Charles Walkiewicz, vice president of Vaughan-Jacklin Corporation, Bound Brook, NJ, has been elected president of the Atlantic Seedsmen's Association. The trade association represents the lawn, garden, farm seed and allied industries in the Northeast United States.

Walkiewicz began his 35 years in horticultural distribution as a billing clerk with McHutchinson & Co. He worked with William H. Neiman & Co. as general manager in charge of operations and when it was sold to Vaughan's Seed Company in 1971, he transferred there as assistant to John Vaughan, working his way up to his

Scientific Guide To Pest Control Operations

by Dr. L.C. Truman
Dr. G.W. Bennett and
Dr. W.L. Butts



Domestic: \$32.50* (hardcover)
Foreign \$37.50* (hardcover)

The SCIENTIFIC GUIDE TO PEST CONTROL OPERATIONS is designed to provide a sound basis for studying the scientific aspects of pest control and promote technical competence. It places emphasis on urban and industrial pest problems. This volume also covers the laws and regulations concerning the pest control industry.

The SCIENTIFIC GUIDE TO PEST CONTROL OPERATIONS is written for owners, supervisors, servicemen, salesmen, students, persons preparing for state certification under the EPA/state programs for commercial pesticide applicators, and people interested in structural pest control.

The SCIENTIFIC GUIDE TO PEST CONTROL OPERATIONS - a *must* for anyone involved in the field of pest control!

Return this coupon to: Book Sales
Harcourt Brace Jovanovich Publications
One East First Street, Duluth, MN 55802
Domestic: \$32.50* (hardcover)
Foreign \$37.50* (hardcover)

YES! Please send me _____ copy(ies) of the SCIENTIFIC GUIDE TO PEST CONTROL OPERATIONS.

A check or money order for _____ is enclosed.

Please charge to my Visa, Master Card, or American Express (circle one)

Account Number _____ Expiration Date _____

*Please add \$3.00 per order plus \$1.00 per additional copy for postage and handling.

Name _____

Address _____

City _____ State _____ Zip _____

Signature _____ Date _____

Phone _____

WTT 23

Quantity rates available upon request.

Please allow 6-3 weeks for delivery

present position of vice president.

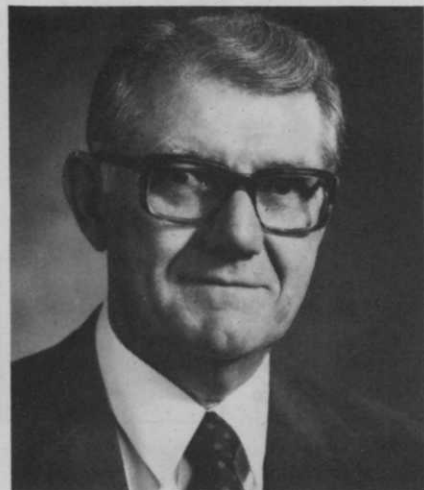
He has been trustee, treasurer and past president of the New Jersey State Florists Association, past chairman of the New Jersey Ornamental Horticultural Advisory Board, past trustee and treasurer, and is currently president of the New Jersey Flower & Garden Show and a member of other trade associations.

TREES

Brogan named to Lewis Tree Service presidency

Philip J. Brogan has been promoted to president of Lewis Tree Service Inc. in Rochester, NY.

Since joining the company in 1970, Brogan has been manager of the Syracuse Branch office, overseeing all residential, municipal and utility tree



maintenance crews. In 1978, he was promoted to executive vice president for the Lewis Tree Service, Inc. and was responsible for marketing, customer relations and company-wide safety programs.

He is a registered landscape architect in the state of New York, an active member of the International Society of Arboriculture, past president of the New York State Arborist Association, ISA Chapter, and current secretary-treasurer of the American Society of Consulting Arborists.

TURF

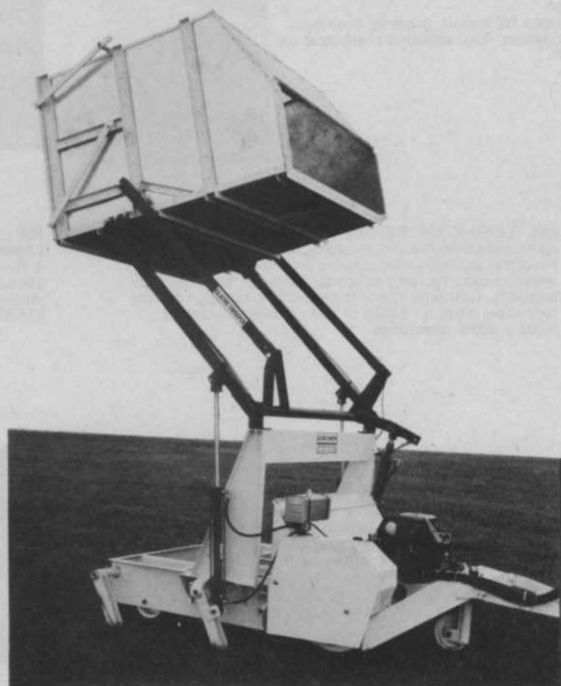
Turf-Seed's "Midnight" rated No. 1 in bluegrass

In a progress report recently issued by the United States Department of Agriculture, Beltsville, MD, Midnight Kentucky Bluegrass was rated the top variety among 84 entries. First year quality ratings were taken from 26 lo-

Continued on page 90

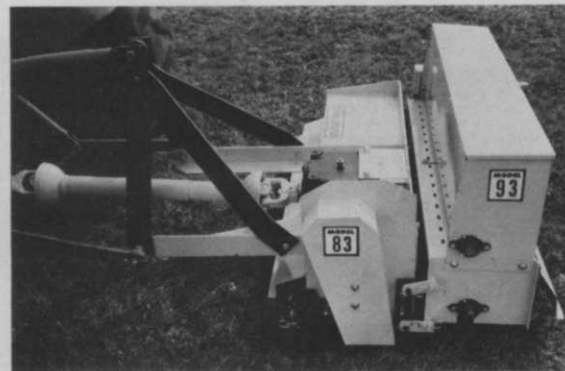
Olathe

TURF & TREE



TURF SWEEPER

The Model 166 High Lift Sweeper sweeps grass, leaves and debris and has a 5 cu.ft. hopper which will dump at 9'. Features include a twin cylinder engine, a universal hitch and a full 60" sweeping width.



AERO THATCH & SEEDER

The PTO Driven Model 83 Aero Thatch and the Model 93 Seeder featuring a 48" seeding swath have teamed up to do your aerifying/thatching/seeding operation efficiently and economically. Call or write for more information.

OLATHE MANUFACTURING, INC.

100 INDUSTRIAL PARKWAY
INDUSTRIAL AIRPORT, KS. 66031
913-782-4396 800-255-6438



Circle No. 137 on Reader Inquiry Card

BOOKSTORE

340 - CONSTRUCTION DESIGN FOR LANDSCAPE ARCHITECTS

by Albe E. Munson
Design specifications for layout, grading, drainage, structures and irrigation. Also explains mathematics of drafting. **\$34.50**



Cost Data for Landscape Construction

1982
2nd Annual Edition
Unit prices for site development



345 - COST DATA FOR LANDSCAPE CONSTRUCTION 1982

Kathleen W. Kerr, Editor
An updated unit cost data reference for designers and cost estimators. Developed to fill the tremendous need for detailed landscape construction cost data. Laid out in easy-to-use CSI format. Annual. **\$27.50**



335 - LANDSCAPE DESIGN THAT SAVES ENERGY by Anne Simon Moffat and Marc Schiler
Practical guide to landscaping a home or office to reduce space heating needs by as much as 30 percent annually. Contains specific planning strategies for the four main climatic zones of the continental United States. **\$9.95 paperback**

385 - TREES FOR ARCHITECTURE AND THE LANDSCAPE

by Robert L. Zion
A book of photographic tree definitions, or portraits, intended to facilitate communication between the landscape architect, the architect and the layman. **\$11.95**



565 - WEEDS by Walter C. Muenscher
Second edition. Premier text for identification and basic natural history for weeds found in the continental United States and Canada. Ecological data on weed biology combined with excellent keys and plant descriptions makes this an essential reference book. **\$34.50**



530 - INTERIOR PLANTSCAPING by Richard Gaines
One of the first handbooks directed at the professional interior plantscaper. Includes design and maintenance clues for foliage. **\$28.50**

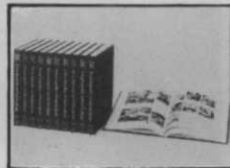


665 - THE OXFORD ENCYCLOPEDIA OF TREES OF THE WORLD

Bayard Hora, Editor
An authoritative reference describing the principal trees of the world. Includes biology and growth of trees, ecology of different types of forest, forest management, timber usage and pest and disease control. **\$24.95**

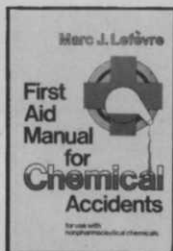
555 - THE NEW YORK BOTANICAL GARDEN ILLUSTRATED ENCYCLOPEDIA OF HORTICULTURE

by Thomas H. Everett
10 volumes compiled in an easy-to-use encyclopedic format with Latin/popular name cross-referencing. 20,000 species, 3600 genera, 2500 cross-references, 10,000 photographs. Slated to be the standard reference source in the field of horticulture. **\$525.00**



795 - FIRST AID MANUAL FOR CHEMICAL ACCIDENTS

by Marc J. Lefevre
This indispensable guide helps you take quick corrective action to minimize the harmful effects of chemical accidents. Written for people (other than doctors) called on to aid fellow workers who are victims of such work-related accidents. A must reference for any work situation involving hazardous chemicals. **\$16.50 paperback**



455 - THE GRAFTER'S HANDBOOK by R.J. Garner
Revised and updated fourth edition. The encyclopedia of plant propagation by grafting. Contains information on the chemical control of weeds in orchards, on diseases and on the vegetative propagation of woody plants. **\$16.95**



790 - RECREATION PLANNING AND DESIGN by Seymour M. Gold
A comprehensive look at recreation needs for parks and how they can design the park facility for the community. Book's content can help justify construction and maintenance needs. **\$37.50**

800 - THE GOLF COURSE

by Geoffrey S. Cornish and Ronald E. Whitten
The first book ever to give the art of golf course design its due, and golf course architects the credit and recognition they deserve. 320 pages and approximately 150 color and black and white photographs. Traces the history and evolution of the golf course, analyzes the great courses, shows how they were designed and constructed. **\$35.00**



010, 015 - ADVANCES IN TURFGRASS PATHOLOGY by Dr. B.G. Joyner & Dr. P. Larsen
Leading U.S. turf pathologists report on turfgrass diseases, pythium blight, snow molds, fairy rings, leaf spot of Kentucky Bluegrass in Minnesota, initial and field fungicide screening, turfgrass disease resistance, etc. Contains new ideas on how to combat turfgrass problems. **\$27.95 hardcover, \$18.95 paperback**



110, 120 - TURF MANAGER'S HANDBOOK by Drs. William Daniel and Ray Freeborg
This specially designed manual by leading turf specialists is a comprehensive, organized approach to turfgrass science and care. An easy, on-the-job reference for planning, purchasing, hiring, construction and plant selection. **\$23.95 hardcover, \$18.95 paperback**

Inquiries serviced for 90 days from date of issue. For those countries outside the U.S., please apply appropriate postage before mailing.

READER SERVICE INFORMATION CARD 2-83₂

For more information on products or services mentioned in this issue, circle the corresponding numbers below, fill in appropriate information and mail today.

101	108	115	122	129	136	143	150	157	164	171	178	185	192	199	206	213	220	227	234
102	109	116	123	130	137	144	151	158	165	172	179	186	193	200	207	214	221	228	235
103	110	117	124	131	138	145	152	159	166	173	180	187	194	201	208	215	222	229	236
104	111	118	125	132	139	146	153	160	167	174	181	188	195	202	209	216	223	230	237
105	112	119	126	133	140	147	154	161	168	175	182	189	196	203	210	217	224	231	238
106	113	120	127	134	141	148	155	162	169	176	183	190	197	204	211	218	225	232	239
107	114	121	128	135	142	149	156	163	170	177	184	191	198	205	212	219	226	233	240

MY PRIMARY BUSINESS AT THIS LOCATION IS:
(PLEASE CHECK ONE ONLY IN EITHER A, B OR C)

A. LANDSCAPING/GROUND CARE AT ONE OF THE FOLLOWING TYPES OF FACILITIES:

- 0005 Golf courses
0010 Sport complexes
0015 Parks
0020 Rights-of-way maintenance for highways, railroads & utilities
0025 Schools, colleges & universities
0030 Industrial & office parks/plants
0045 Condominiums/apartments/housing developments/hotels/resorts
0050 Cemeteries/memorial gardens
0060 Military installations & prisons
0065 Airports
0070 Multiple government/municipal facilities
 Other type of facility (please specify) _____

B. CONTRACTORS/SERVICE COMPANIES/CONSULTANTS:

- 0105 Landscape contractors (installation & maintenance)
0110 Lawn care service companies
0125 Landscape architects
0135 Extension agents/consultants for horticulture
 Other contractor or service
(please specify) _____

C. SUPPLIERS:

- 0205 Sod growers
0210 Dealers, Distributors
 Other supplier (please specify) _____

Approximately how many acres of vegetation do you maintain or manage?

What is your title? (please specify) _____

YOUR NAME _____

BUSINESS NAME _____ BUSINESS ADDRESS _____

CITY _____ STATE _____ ZIP _____ TELEPHONE (____) _____

AREA CODE

I WISH TO RECEIVE (CONTINUE RECEIVING) WEEDS, TREES & TURF EACH MONTH YES NO

SIGNATURE _____ DATE _____

Circle
the
Reader
Service
numbers
of those
items of
interest
to you.



BUSINESS REPLY CARD

FIRST CLASS PERMIT NO. 665 DULUTH, MINNESOTA

POSTAGE WILL BE PAID BY ADDRESSEE

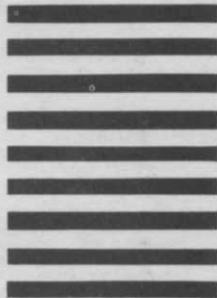
READER SERVICE DEPARTMENT

WEEDS TREES & TURF

POST OFFICE BOX 6049

DULUTH, MINNESOTA 55806

NO POSTAGE
NECESSARY
IF MAILED
IN THE
UNITED STATES



**GET
MORE
FACTS**

BOOKSTORE



375 - SITE DESIGN AND CONSTRUCTION DETAILING by Theodore D. Walker
An introduction to the subject of site design and construction detailing. Focus is on design implementation. Discusses the nature of construction drawings. Presents the characteristics, origin and nature of construction materials. **\$24.00**

365 - PLAN GRAPHICS by Theodore D. Walker
Focuses on plans, elevations, sections and lettering. Provides many different examples to be used as guidelines in personal soil experimentation. Includes graphic techniques for site analysis and design concepts. **\$21.00**



355 - PERSPECTIVE SKETCHES by Theodore D. Walker
A reference source of ideas, media use, styles and techniques. Grouped by subject matter. Illustrates technique for vegetation, vehicles, play equipment and recreation facilities, people, animals, etc. **\$19.50**



380 - RESIDENTIAL LANDSCAPING I by Theodore D. Walker
Provides an in-depth discussion of the planning, design and construction phases of residential landscaping. Illustrated with the work of professional landscape architects. Covers everything from analyzing the site to constructing the landscape. **\$22.50**

ADDITIONAL TITLES

- 410 - DISEASES & PESTS OF ORNAMENTAL PLANTS \$29.95
- 660 - DISEASES OF SHADE TREES \$23.50
- 610 - DISEASES OF TURFGRASS \$30.00
- 480 - GREENHOUSE MANAGEMENT FOR FLOWER & PLANT PRODUCTION \$15.35
- 490 - GREENHOUSE OPERATION & MANAGEMENT \$19.95
- 350 - HANDBOOK OF LANDSCAPE ARCHITECTURAL CONSTRUCTION \$48.50
- 360 - HOME LANDSCAPE \$24.95
- 510 - HORTUS THIRD \$99.50
- 690 - INSECTS THAT FEED ON TREES & SHRUBS \$47.50
- 370 - LANDSCAPE OPERATIONS: MANAGEMENT, METHODS & MATERIALS \$19.95
- 545 - MODERN WEED CONTROL \$21.50

- 700 - THE PRUNING MANUAL \$14.95
- 710, 720 - SHRUB IDENTIFICATION \$18.00 hardcover, \$8.00 paperback
- 780 - TREE IDENTIFICATION \$9.95
- 760 - TREE MAINTENANCE \$35.00
- 770 - TREE SURGERY \$18.95
- 650 - TURFGRASS MANAGEMENT \$19.95
- 630 - TURFGRASS SCIENCE & CULTURE \$25.95
- 640 - TURF IRRIGATION MANUAL \$22.95
- 620 - TURF MANAGEMENT HANDBOOK \$14.65
- 560 - WEED SCIENCE \$24.50
- 570 - WESTCOTT'S PLANT DISEASE HANDBOOK \$34.50
- 580 - WYMAN'S GARDENING ENCYCLOPEDIA \$29.95

CLOSEOUTS

ORDER THESE TITLES AT SPECIAL REDUCED PRICES!

- 430 - FLOWER & PLANT PRODUCTION IN THE GREENHOUSE \$13.60
- 440 - FUNDAMENTALS OF ENTOMOLOGY & PLANT PATHOLOGY \$18.50
- 450 - GARDENING IN SMALL PLACES \$6.75
- 460 - GREENHOUSE ENVIRONMENT \$21.20
- 500 - HORTICULTURAL SCIENCE \$18.80
- 540 - INTRODUCTION TO FLORICULTURE \$25.00

Mail this coupon to: Book Sales, Harcourt Brace Jovanovich Publications
One East First Street, Duluth, MN 55802

Name _____
 Street Address _____
 P.O. Box Number _____
 City/State/Zip _____
 Phone Number _____
 Signature _____ Date _____

Please send me the following books. I have enclosed payment* for the total amount.
 Please charge to my Visa, Master Card or American Express (circle one)
 Account Number _____ Expiration Date _____

BOOK NUMBER AND TITLE	QUANTITY	PRICE	TOTAL PRICE

*Please add \$3.00 per order plus \$1.00 per additional copy for postage and handling. _____ (postage & handling)

Please allow 6-8 weeks for delivery
 Prices subject to change.
 Quantity rates available on request

Total Enclosed _____

KEES

Better lawn care products to do the job easier & faster



Model 211400

This powerful 21" mower with heavy gauge steel deck and frame is built to stand up under tough use and keep on working year after year.

- Powered by a 4 cycle, 4 h.p. Briggs & Stratton engine with flywheel brake.
- Heavy gauge steel handle.
- Special one-piece Ultra High lift blade with tempered cutting edges. Adjustable cutting heights from 1/4 to 3/4 inches.
- Equipped with regreasable double ball bearing wheels. 8 x 1.75 tires on front, 10 x 1.75 on rear.
- Special crankshaft protector.
- Dual filter air cleaner.
- Extra-large 3 bushel nylon bag grass catcher available.

Model 100528

POWERAKE®

(THATCHER)

Fold-over handle



- Rakes out thatch ■ Cleans 20" swath ■ Powerful 5 hp engine with dual filter air cleaner ■ 28 hardened steel plate, self-cleaning fingers
- Improved heavy-duty wheels ■ Raking assemblies interchangeable with aerator assembly ■ 2" single-action raking height adjustment ■ Semi self-propelled



Since 1874

Write P.O. Box 1009

F. D. KEES MFG. CO.
Beatrice, Nebraska 68310

Circle No. 124 on Reader Inquiry Card

NEWS from page 85

cations throughout the United States measuring such turf characteristics as color, density, disease resistance, heat and cold tolerance, shade adaptation and appearance.

Midnight's most unusual characteristic is its dark, blue-green color. Its overall disease resistance, density and wide range of adaptability contributed to its first-place rating. Midnight is recommended for use in sod production, lawns, golf courses, parks, and athletic fields. It is a product of Turf-Seed, Inc., Hubbard, OR. The 1982 crop production is nearly sold out. Availability will improve in the fall. For more information, write or call Turf-Seed, Inc., P.O. Box 250, Hubbard, OR (503) 981-9571.

The Specialty Products Group was formed last year to market Mobay's expanding list of chemicals to the professional turf and pest control fields.

Allen Haws, Manager of Specialty Chemical Sales for the Specialty Products Group, says, "We're finding out exactly what our customers want and need. Based on our research results so far, we're focusing on their application, packaging and information problems."

HORTICULTURE

HRI to publish new horticultural findings

The Horticultural Research Institute will publish "The Journal of Environmental Horticulture" early in 1983.

Edited by Dr. Thomas A. Gretz, head of the Department of Horticulture at Virginia Polytechnic Institute and State University, the Journal is designed to rapidly communicate relevant research findings to a broad readership in the nursery and scientific communities. Papers considered for publication will be reports of original research, either basic or applied, and review articles related to environmental horticulture. Each article will include a non-technical summation of how the information presented will be of value to the nursery industry.

"The Journal of Environmental Horticulture" will be a quarterly publication after its introduction early next year. Regular subscription prices will be \$25 a year. Contact the Horticultural Research Institute, 230 Southern Building, Washington, D.C. 20005.

CHEMICALS

Stauffer Chemicals selects ad agency

Stauffer Chemical Company of Westport, CT, has chosen Barker Campbell & Farley for the advertising and sales promotion of its Agricultural Specialty Products. The Virginia Beach, VA, based ad agency will represent products including Betasan crabgrass control, Devrinol pre-emergent weed control, Vampan fumigan, Imidan tree insecticide, Aspon turf insecticide, and others. Barker Campbell & Farley organized their horticultural and agricultural group in May 1982. J. Robert Stiffler, senior vice president of the agency, will be the account supervisor.



American Association of Nurserymen Governor John Chiapelone, left, of Burlingame Garden Center, Burlingame, CA, presents a \$1,570.53 check to AAN Executive Vice President Robert Lederer. The check from the California Chapter of the AAN will go toward the Horticultural Institute's Endowment Fund Founder's Grant. The gift will be added to the \$9,050 already contributed by individuals, business firms and associations to the Founder's Grant. Earnings will be used to support the HRI Endowment Fund's operating expenses.

CHEMICALS

Mobay goes nationwide to talk to customers

Mobay Chemical Corporation, Specialty Products Group, of Kansas City, is currently conducting nationwide interviews of pest control operators, golf course superintendents, landscape architects and commercial lawn care operators to refine its knowledge of the specialty chemicals market.