

A BLANKET SOLUTION FOR YOUR BUNKER PROBLEMS

ROCKS

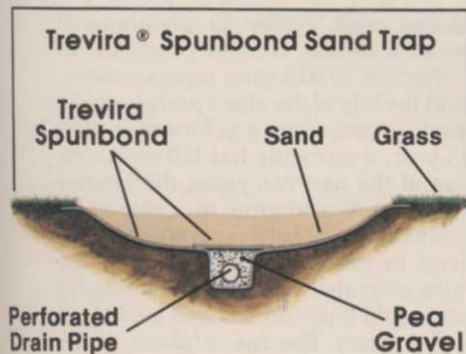
WEEDS

DIRT

WATER



TREVIRA® SPUNBOND from *Warren's*®



This revolutionary new geotextile fabric can be your "Security Blanket" against today's ever increasing course maintenance costs! A simple installation of Trevira® Spunbond as shown here will effectively eliminate such bunker nightmares as dirt...rocks...and weeds while allowing complete water drainage ...no more wading pools in your sand traps! And, Trevira® Spunbond will stand the test of time because it's impervious to soil chemicals. When properly installed, mechanical sand rakes and even those deadly deep digging sand wedges will not affect it! You'll also find Trevira® Spunbond the ideal and economical solution for such applications as reinforcing cart paths, erosion control, drainage, greens liners, and much more.

Available in easy-to-use rolls, Trevira® Spunbond is produced in weights ranging from 4.5 to 16 oz./yd². For applications literature on our "Security Blanket" and dealer locations, call or write Warren's Seed-Special Products Division.

You'll sleep better for it!

Warren's®

SEED-SPECIAL PRODUCTS DIVISION

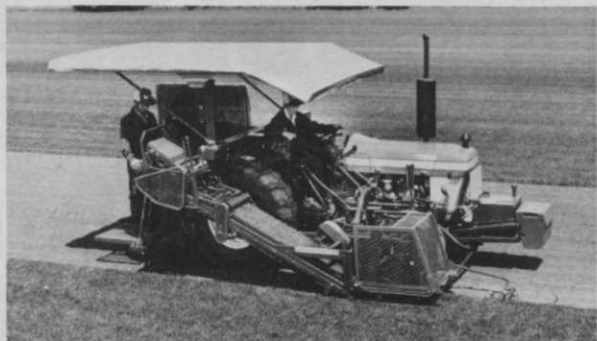
P.O. Box 459, Suisun City, CA 94585, (707) 422-5100

Corporate Office: 7502 S. Main St., Crystal Lake, IL 60014, (815) 455-5100

Trevira® Spunbond is a registered trademark of Hoechst AG.
Warren's is an authorized distributor of Trevira® Spunbond.

Circle No. 158 on Reader Inquiry Card

THE NEW BROUWER 1500 Sod Harvester Does It All



WITH AUTO-STEER

- Low labour costs — for large and small operations.
- Cuts to irrigation pipes, ditches and fences.
- Quality cut — less top soil — operates off uncut turf.
- New roof and rubber conveyor mats.
- New Auto-Steer saves 2-3 pallets per acre.
- No strips or even strips for regrowth.
- New Uniblade for economical sharp cut.
- Will Roll-Slab-Fold, 15-16-18-24 in.

THE NEW BROUWER 2000 Sod Harvester Has It All



WITH PALLET DISPENSER

- New pivoting cutter head for more uniform sod.
- Small tractor maneuverability — excellent flotation.
- Operates off the uncut turf — prevents tracking.
- Less than 8 ft. wide for road transport.
- Controlled pallet level and 4 wall piling cavity for easy and neatly stacked pallets.
- Optional pallet dispenser for effortless empty pallet reloading.
- Roll or slab, 16-18-24 in. width.
- Auto-Steer and canopy standard features.

BROUWER

TURF EQUIPMENT LIMITED

7320 Haggerty Rd./Canton, MI. U.S.A. 48187 Telephone (313) 459-3700

Woodbine Avenue/Keswick, Ontario, Canada L4P 3E9
Telex 065-24161 Telephone: (416) 476-4311

Circle No. 105 on Reader Inquiry Card

LANDSCAPE LOG from page 22

shrubs. With either B&B or container grown trees, the root system has not been disturbed to the point where transplanting success should be dramatically reduced. It still must be stressed, though, that early planting during April will, except for pines, result in an even higher percentage of transplant success.

By early May, turf has started to grow aggressively. With that period of active growth, lawn care should take precedence. Care and continuous **mowing**, that is never allowing the grass to get taller than $\frac{1}{3}$ the height you intend to set the mower e.g. mowing height $2\frac{1}{2}$ " cut when the grass reaches $3\frac{1}{4}$ ", is paramount. If this mowing frequency can be maintained, then all clippings can be returned to the soil and fertilizer requirements can be dramatically reduced.

In areas that are particularly difficult to mow, e.g. along highways and steep banks, May is the prime month to **apply growth retardants**, e.g. Embark. If the growth retardant is applied during May in this type of area, mowing frequency will be minimized, e.g. in low maintenance areas for up to 8 weeks.

Annuals, or **bedding plants**, should be planted as soon as the soil warms after the danger of the last frost, e.g. frost-free date for Midland, Michigan is May 25. Annuals, such as geraniums, begonias, impatiens, marigolds, provide 4-6 months of continuous color with little or no maintenance.

There was a great rise in popularity of bedding plants during the '60's and '70's. The result of current breeding is disease-free, reasonably low maintenance varieties of nicotiana, marigolds, impatiens, begonias, annual phlox, or, of course, seed geraniums. The color and texture afforded by bedding plants last for such a long period of time that they should be high priority.

Generally speaking, bedding plants require more maintenance than simple ground covers but not as much maintenance as turf.

Aquatic pond management is an emerging science with only broad guidelines developed. Presently, depth control, fringe or interface plantings, nutrient manipulation, and harvesting of unwanted plants are the first levels of management of weeds. Aquatic herbicide applications should be used as one of the last resorts as they often kill or suppress all aquatic plants in the pond as well as making the water unsatisfactory for irrigation and/or terrestrial plants. Generally speaking, aquatic plants are not controlled chemically until the water temperature reaches 65°F . This high water temperature exists after some growth has already commenced. One should carefully assess the total effects of herbicide application to be sure that one is not creating a new problem. **WTT**

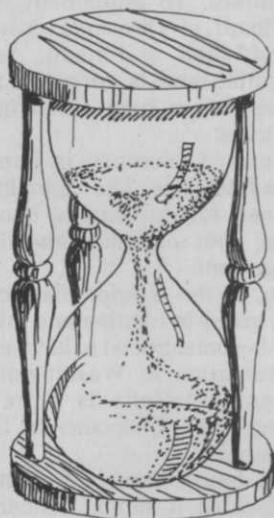
LANDSCAPE UPDATE from page 16

Participants considered such topics as phenomenal growth rate, chief executive officer seminar programs, financial management, effective Washington representation, the consumer market and the role of the allied professional.

The Interior Plantscaping Association was formed in 1979 and, beginning its fifth year, it currently has 750 members. Even with the recession of the past two years, the interior plantscaping profession continues to grow at a rate of 15 percent annually. It is estimated that between 5,000 to 10,000 businesses are involved in interior plantscaping in the United States. It was also estimated that the growth rate for plantscaping businesses would taper off to a still healthy 10 percent over the next five years. The use of plants in the commercial environment is here to stay.

continued on page 104

CONTROL SHADE TREE INSECT PESTS



With

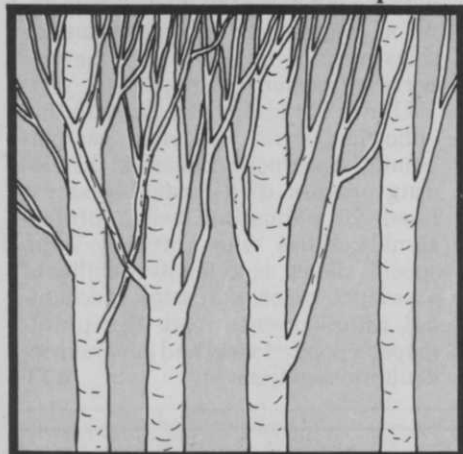
**TIME
TESTED**

MARLATE[®]

METHOXYCHLOR INSECTICIDE



Tent Caterpillars



Tussock Moth



Gypsy Moth

CONTROLS:

- Elm Bark Beetle (Dutch Elm Disease)
- Gypsy Moth
- Tussock Moth
- Eastern Tent Caterpillar
- Japanese Beetle
- Cankerworm
- White Pine Weevil
- Pine Bark Beetle

Available as wettable powder and liquid formulations.

Safe, effective, residual action.

See your garden supply or seed store.



KINCAID ENTERPRISES

P. O. BOX 671 • NITRO, WV 25143

TRIM YOUR LABOR COSTS...

... with Atrinal® the spray that keeps your shrubs the way you trimmed them.

Just trim once in the spring. Then spray *once* with Atrinal. (Where the growing season is longer, you may want to spray again in early fall.) Now hang up your pruning shears for the rest of the year.

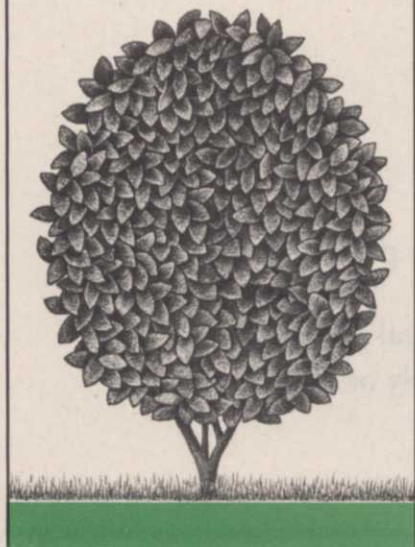
Atrinal systemic growth regulator inhibits apical bud growth, promoting lateral branching for lusher, fuller plants that keep their shape. Atrinal can also be used to suppress flowering and fruit set of ornamental olives and certain other species. And application is safe and easy.

For more information, write for the Atrinal Landscape Maintenance brochure.

Atrinal®

Maag, Inc.
P.O. Box 2408
Tuscaloosa, Alabama 35403
205/758-1186

Atrinal can also be used for nursery and greenhouse crops.



Circle No. 131 on Reader Inquiry Card

LANDSCAPE UPDATE from page 102

The role of the Association was given close scrutiny. Education is the primary concern of plantscapers and the Association that represents them. The assembly found a Chief Executive Officer seminar series should be implemented in which experienced industry professionals will address sophisticated financial management topics. Educational ties should be strengthened with allied trades, growers and suppliers through liaison committees. To implement this, the IPA Board of Directors recently approved such a liaison Advisory Committee and is currently seeking representatives from allied trades to participate.

Second to education in importance was publications. The committee saw the need for developing handbooks dealing with marketing and financial management.

Also, as the interior plantscape industry grows in number and influence, it will become crucial to have effective representation in Washington. Government relations is a new, but growing, area of concern for IPA and its members.

As a fourth area of responsibility, IPA decided it should concern itself

with the establishment of professional credibility through accreditation. To this end, the Leaders of the Industry Assembly support an expanded program of certification through the National Council of Interior Horticultural Certification program (NCIHC).

As a final area of responsibility, the Association should function as a reference source, liaison with allied trades and information bank for each IPA member.

Marketing and public relations zeroed in on the two major marketplaces: commercial and residential. The outcome of the lengthy discussion was that optimal awareness still lies with the individual member firm to develop aggressive, high-performance sales programs as follow-up to the support they receive from the I.P.A.

Under bidding and specifying, education, or the lack of it, was pinpointed as a crucial concern in the bidding process. The Assembly saw a need for educating design professionals, those who normally write specifications, as to the availability of a product, procedural steps, mechanical requirements from the plantscapers' point of view and general horticultural requirements. **WTT**

LANDSCAPE CONTRACTORS
NURSERIES
WELLS CARGO™
GROUNDS KEEPERS



ALL SEASON PRODUCTIVITY ... throughout the nation people like yourself are finding that Wells Cargo quality trailers are an easy, economical, efficient way to handle their jobs. You can haul nursery stock, fertilizer, seed, sprayers, implements, mowers ... everything your job requires in a TOTE WAGON or EXPRESS WAGON equipped with a ball-type coupler. Steel structured for maximum life and minimum maintenance. There is a capacity to fill your needs from 1-ton to 5-ton. Tell us your requirements and we will supply specifications and prices on a trailer to do the job for you. We have manufacturing, sales & service facilities in IN, GA, TX, & UT and a national network of dealers to serve you.



For Prices & FREE Illustrated Brochure

CALL NOW!

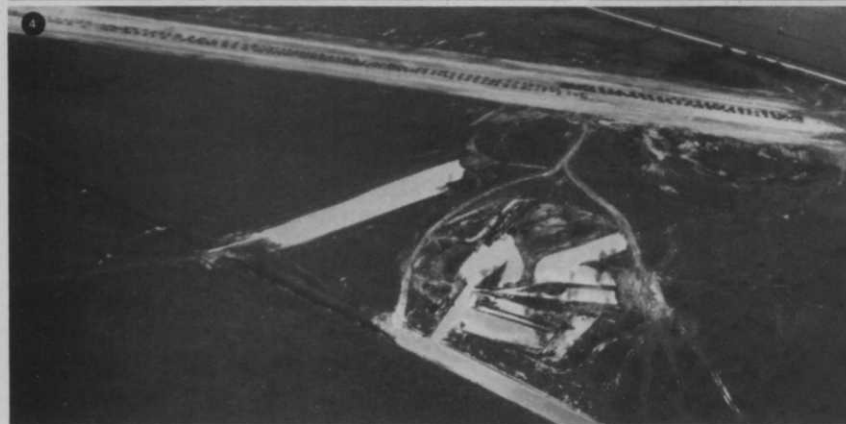
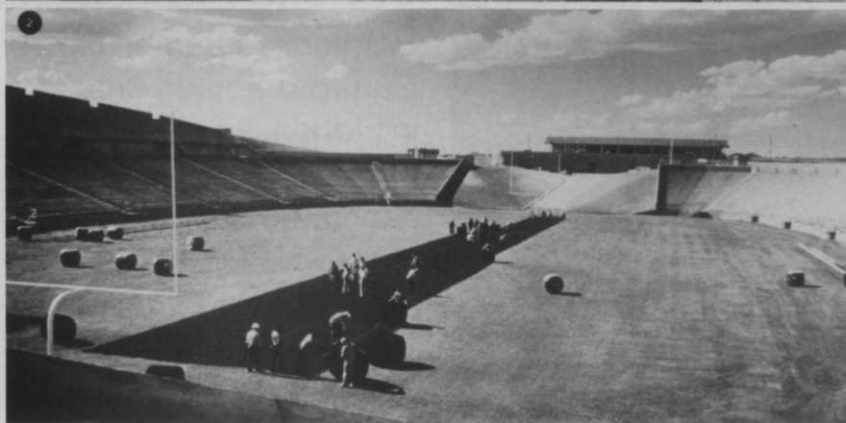
TOLL FREE 1-800-348-7553

or Write

Wells Cargo, Inc.
P.O. Box 728-473
Elkhart, Indiana 46515
(219)264-9661

Circle No. 160 on Reader Inquiry Card

Landscape architects all over the country are finding their roots in the Enkaturf® System.



① Golf courses all over the country are using the Enkaturf® System for soil erosion problems, entrance ways to cart paths, tees, pond stabilization and for the construction of flood plains. Roots spread and grow through the Enkaturf System, making the turf more durable. In fact, eleven of the top forty golf courses are protecting their turf with the Enkaturf System.

② Football fields, all playing fields are protected from tearing and divots with the Enkaturf System. It's structured to keep turf grounded and resilient even in heavy traffic areas. So players are less apt to become injured. The System also reduces compaction while increasing drainage capacity.

③ Soccer fields in Europe have been reaping the benefits from the Enkaturf System for the last 16 years. The aesthetic quality of a natural playing field is enhanced with the Enkaturf System.

④ Airfield architects have also discovered the effectiveness of the Enkaturf System in airstrips. The Enkaturf System is used to reinforce grass landing strips to provide a smooth shock-absorbing surface. A smooth landing. Airfields with paved runways use the Enkaturf System to protect adjacent grass areas.

Zoos and parking lots also use the Enkaturf System to protect their grass areas. The System gives sod structural strength. No other medium, natural or man-made, can achieve this.

The Enkaturf System utilizes Enkamat® 3-dimensional resilient nylon webbing. It's economical. And it's safe from humic acid and soil fungi. Making it totally safe for you to sink your roots into.

Contact Enkaturf Dept., American Enka Company, Enka, NC 28728. (704) 667-7713. AMERICAN ENKA COMPANY

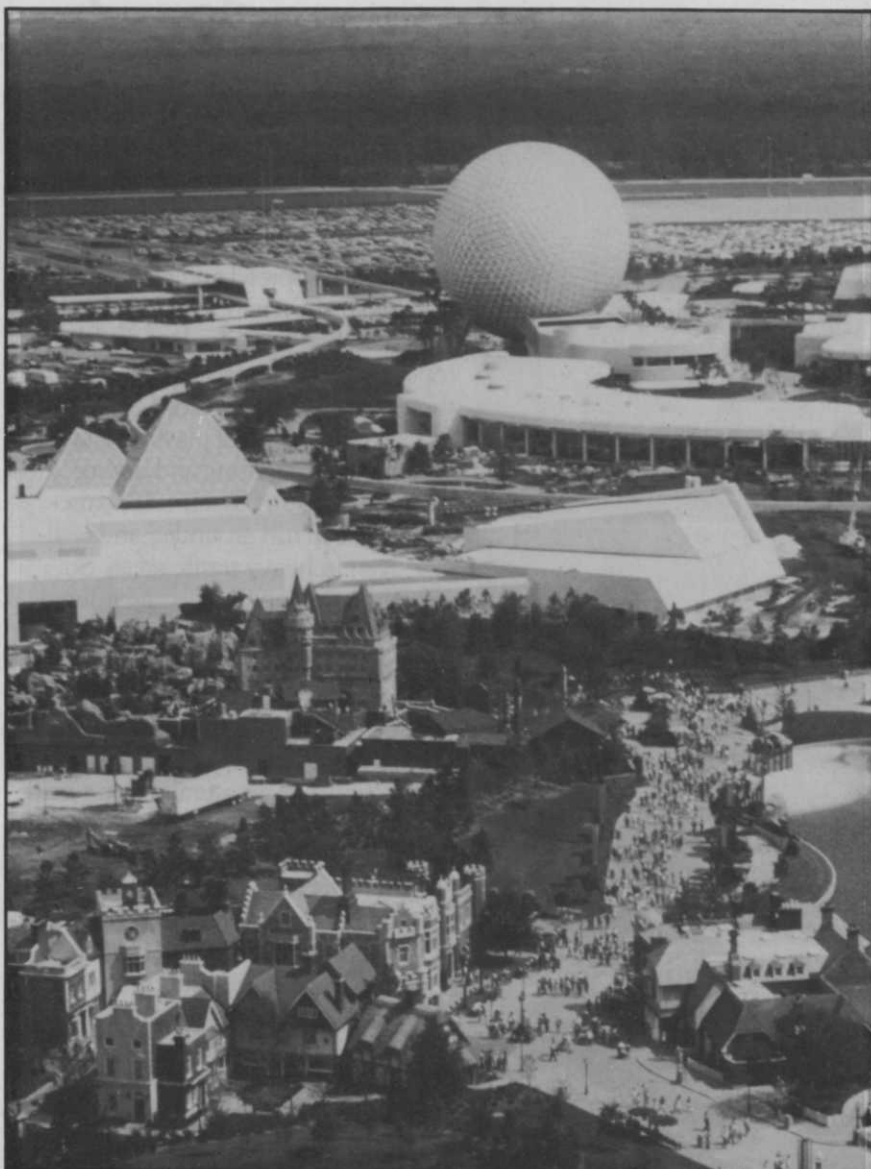
The Enkaturf System by ENKA

Helps keep grass from losing its roots.

ENKATURF AND ENKAMAT ARE REG. TMS OF AMERICAN ENKA CO., ENKA, NC, A PART OF ALZON INC., AND ARE THE SUBJECT OF A NUMBER OF U.S. PATENTS.

Circle No. 102 on Reader Inquiry Card

APRIL 1983/WEEDS TREES & TURF 105



Most irrigation is done between 7:00 pm and 1:00 am. Under normal conditions, 5,500 gallons per minute is used. Water is supplied by five wells.

Hanging plants are watered by small tubes which drip as needed.

The irrigation lines and the Valcon control system cost \$1.7 million to install.

Insects and plant diseases have to be watched carefully. Oftanol is used for control of mole crickets, followed by spot treatments with diazinon. Sevin and Dursban are used for sod webworm and armyworm control.

Hemlock, common in Canada, wouldn't make it in Florida, so landscape architect Tony Virginia substituted a Himalayan cedar which looks like hemlock.

Tree and shrub insects, such as mites, hard and soft scale, and lepidoptera, are kept under control with Orthene, diazinon, Kelthane, Vendex and summer oil.

Tree diseases, such as leafspot and dieback, are treated with copper sulphate or Fore. Root rot is treated with benomyl, Banrot, Subdue, and Truban.

Treflan, balan, and Ronstar are used in preemergence weed control. Roundup is used for spot control.

"Since all the horticultural work is done with our staff, we have a broad range of equipment," McCarty said. "We have two Ford tractors, Mott Interstater mowers, two Kut-Kwik rotaries for slopes and overpasses, four Toro Groundsmasters, and eight Cushman Trucksters. The landscape crew also has seven half-ton trucks and a number of sprayers."

As Epcot Center expands from 260 acres to 500 acres, the same high level of landscaping will be applied. Without landscaping, Epcot Center wouldn't be the attraction it is. Landscaping and landscape maintenance are a vital part of the Disney "magic". **WTT**



Epcot's 260 developed acres include plants from all parts of the country. Crew plants annuals four times each year in 165 beds ranging in size from 50 to 20,000 square feet.



© 1983 E-Z-GO Division of Textron

GOLF COURSES, PARKS, CEMETERIES, AND CAMPUSES. ALL PROVING GROUNDS FOR THE GT-7 TURF TRUCK.

Whether you're hauling, aerating, seeding, top dressing, or spraying, the GT-7 is fully equipped to handle the job. That's because E-Z-GO has been constantly changing, improving and upgrading the GT-7 until it literally suits any of your grounds maintenance functions.

E-Z-GO, the world's largest manufacturer of golf cars and utility vehicles, is backed by Textron, Inc., a major multi-industry manufacturing company.

The sheer number of service personnel in the field insures that users of E-Z-GO products get the service they need, when

they need it.

Aside from giving you steel's strong durability, and a 1500 pound payload capacity, the heavy-duty GT-7 is an all purpose turf truck with a number of accessories and options.

For the name of your nearest distributor and information on the GT-7 or any other E-Z-GO vehicle, write or call:

E-Z-GO
TEXTRON

P.O. Box 388, Marvin-Griffin Road
Augusta, Georgia 30913-2699.
(404) 798-4311

When SENCOR goes where the goosegrass grows . . .



the goosegrass goes.



Apply [®]SENCOR 75 Turf Herbicide to your actively growing bermudagrass turf at the recommended rate at the recommended time and it's goodbye, goosegrass.

SENCOR is formulated as a dry flowable herbicide for easy mixing and application with

standard spraying equipment. SENCOR works two ways to effectively control goosegrass in bermudagrass—by contact

activity and root uptake.

Applied prior to dormant turf, SENCOR also controls such broadleaf winter annual weeds as common chickweed, corn speedwell, henbit, parsely-piert, and spur weed. Ask your turf chemicals distributor for SENCOR 75 Turf Herbicide.



SENCOR is a registered TM of the Parent Company of Farbentabriken Bayer GmbH, Leverkusen



Moby Chemical Corporation
Agricultural Chemicals Division
Specialty Products Group
Box 4913, Kansas City, MO 64120

Circle No. 135 on Reader Inquiry Card

APRIL 1983/WEEDS TREES & TURF 109

CLASSIFIEDS

RATES: 95 cents per word (minimum charge, \$20). Bold face words or words in all capital letters charged at \$1.20 per word. Boxed or display ads charged at \$75 per column inch (one inch, minimum). Agency commissions will be given only when camera-ready art is provided by agency. For ads using blind box number, add \$5 to total cost of ad. Send ad copy with payment to Dawn Anderson, WEEDS TREES & TURF, 1 East First Street, Duluth, MN 55802.

BOX NUMBER REPLIES: Mail Box number replies to: WEEDS TREES & TURF, Classified Ad Department, 120 W. 2nd St., Duluth, MN 55802. Please include box number in address.

BUSINESS OPPORTUNITIES

WANT TO BUY OR SELL a golf course? Exclusively golf course transactions and appraisals. Ask for our catalog. McKay Golf and Country Club Properties, 15553 N. East Street, Lansing, Michigan 48906. Phone (517) 484-7726. TF

FOR SALE—Successful RETAIL NURSERY and LANDSCAPE BUSINESS. Prime location on main Hwy in heart of town. Well equipped and fully stocked. Complete irrigation system from lake on premises. **STEADY CASH** flow and active Landscape Contracts. Asking \$225,000.00. Owner will help finance (813) 842-6851. TF

18 HOLE GOLF COURSE IN EASTERN ONTARIO—10 room house with pro shop, new large repair shop, large barn and storage shed. A stream crosses the property that makes an enjoyable challenge. Full line of machinery in good repair. A total of 200 acres—100 acres not developed. Close to a fast developing built-up area. Owner anxious to retire. Please call: Mrs. Rurak or Mrs. Rutherford, Royal Trust, 277 Bath Road, Kingston, Ontario (613) 544-4620. 4/83

R.R. TIE DISTRIBUTORSHIP—TURN TIES INTO CASH...SEE MISCELLANEOUS. 5/83

FOR SALE: Complete computer business system for tree and landscape services. Our package includes the following: **SOFTWARE:** Multi-company General Ledger, Accounts Payable, Accounts Receivable, Payroll, Order Entry/Processing, Billing. **HARDWARE:** Micro-Data Reality 5000, 128 K RAM, 50 Megabytes of Disk, 800 BPI/9 Trk Tape, 3 Prism Terminals (CRT), 16 Terminal Ports. **COMPLETE PRICE:** \$48,000. Software Only: \$22,000. Hardware Only: \$30,000. **FOR INFORMATION CONTACT:** J. Hetzler at (716) 436-2900. 6/83

START YOUR OWN SOIL TESTING SERVICE. High Profits—Easy to get started. Takes the guess work out of Professional Turf Care Management. Unlike the amateur N-P-K/pH test like the homeowners use. This is a thorough 14-Point Professional Laboratory Analysis with recommendations by certified Turf and Soil Experts. It's what you need to set you apart from your competitors. Makes you the Pro—Keeps your customers loyal. A \$23 analysis for just \$12.00. A \$50.00 deposit gets you set up with all the materials you need to market and service your customers and future prospects. We do the work—You come out ahead! Green Pro Cooperative Services, 380S. Franklin Street, Hempstead, NY 11550. (516) 483-0100. 4/83

PRIME GOLF COURSES FOR SALE: Professional golf course brokers & consultants. **FAIRWAY BROKERS**, 14315 W. 30th Ave., Golden, Colorado 80401. (303) 278-GOLF. TF

USED EQUIPMENT

HI-RANGERS AERIAL BASKETS 65', 57', and 53'. Skyworkers aerial baskets 65', 50', 40'. Vermeer stump cutter 1560.6. Vermeer tree spade 66, TS 44. Asplundh bucket and brush chippers, Bean sprayer, 9 ton trailer. Parkway Tree Service, 12026 W. Cherry, Wauwatosa, Wisc. 53226. (414) 257-1555. TF

Hi-Ranger Bucket Trucks—90', 70', 65', 52' and 48', also Asplundh, McCabe, Pitman and Skyworker. Brush chippers, Vermeer stumpers, Prentice loaders, Vermeer TS 44 and 66, small cranes. Allied Utility Equipment, Inc., W204 N11509 Goldendale Road, Germantown, Wisconsin 53022, (414) 255-6161 Anytime. TF

Used Spray Units For Sale

1,250-gallon stainless steel tanks. Mechanical agitation. FMC 20 gallon/minute pump. Hanney electric reel. Ford F600 and Chevy C60's—'76's, '77's, '78's and '79's.

Call (502) 241-7341. TF

USED GOLF CARS FOR SALE—All makes and models, 3 & 4 wheel, electric or gas. If we don't have your choice in stock we can get it. Transportation available. Mid-Atlantic Equipment Corp., Collegeville, PA. Call Now! (215) 489-1400. TF

TREE SPRAYER—1000 gallon BEAN S.S. tank, 300'—3/4" hose on electric reel, BEAN gun. Excellent. \$10,500. Can deliver within 250 miles. 16" brush chipper (Woodchuck), V-8. Excellent. \$5000. Call (203) 688-4212. Windsor, CT. 4/83

VERMEER TS-66 low hour spade on Twin Screw Ford T-850 w/30,000 miles \$24,000.; **CARETREE 40"** spade on **SWINGER 200** 4 wheel drive loader, 400 hours, w/Bucket & Forks, very fast for B&B, \$22,000. (701) 223-2933 or 223-3225, Dennis, Box 1334, Bismarck, N. Dak. 58502. 5/83

For Sale—Tractor-Lawn Combine Units (2) #129 IH Hydrostatic Tractors w/10 gal tank on tractor. Combines are stainless steel with aerators, 4 granular bins, and 20 gal. spray tank. Good operating equipment. \$3,500/unit. Call (315) 637-6001 or (315) 492-3217. 4/83

Hydro-Mulchers and Spyderys—New and used hydro-mulchers (super-seeder 1000 gal.). Several used Spyderys starting at \$8,900.00. Good condition w/extend forks. Thomas Brothers Grass, 2500 South Cooper, Arlington, TX 76015. (817) 261-7346. 5/83

SKYWORKER AERIAL BUCKETS—Sales of both new and used. Finest service anywhere in the country. Overhauls and changeovers are our specialty. Best prices on parts. We deal in all types of tree trimming equipment. Ask about fleet discounts. Call or write American Hydraulics, Inc., Route #4, Hartwell, GA 30643; (404) 376-3191.

FOR SALE—1975 John Bean 60 gpm hydraulic tree sprayer. 1000 gal. stainless steel tank—65 horsepower. Refiller, hose reel, hose and 1 gun included. \$10,000. Call 203-872-4513 evenings. 4/83

For Sale—1977 Jacobsen F-10 with 10 blade fairway mowers \$12,000.00 with reels, \$11,000.00 without. 1977 Jacobsen G-10 Turf Tractor \$4,250.00. Both in good condition. Call Jon or Jerry (205) 349-2477 or 345-0370. 4/83

1974 Chevy 50' Skyworker—Fiberglass Upper, insert in lower 12' Chip Box, \$24,900.00; 6 cyl. 16" Asplundh, \$6,795.00; 1970 Chevy 14' Dump, \$4,595.00; Vermeer 2465 with Deutz diesel, \$16,950.00; Big Vermeer Splitter, \$2,495.00; Trellan C—14 Chipper with loader, \$23,900.00. All equipment is in excellent condition. Trades accepted. Edwards Tree Service, (216) 988-4478. 4/83

FOR SALE—Schutt Tree Diggers for Ford 730 Loader 18" & 24", Price: \$650.00. Earthcivator, 3 point hook up, six foot, never used. Price: \$600.00. All equipment in good condition. **FUNK BROS. TREE SERVICE, INC., ASHLAND, OHIO** 44805—Phone: 419-325-2113. 4/83

NEW/WICK-IT™ "Junior" WEEDKILLER. Lightweight hand-held wick applicator. No spray drift, low herbicide usage. Johnsonsgrass and other weeds growing among desirable plants. \$16.95 plus \$2.00 for handling. Send for brochure. Plant Production, Rt. 7 Box 441E, Fort Worth, TX 76119. 4/83

For Sale—**HAHN FLEX-A-MATIC 140 REEL MOWERS.** 1 new, 2 used and additional parts. If interested make offer. (516) 293-9393. 5/83

SPRAYER, 3000 gallon, 50 GPM, stainless steel agitation with hose, electric reel, on Ford 1000. \$14,500. Call (203) 249-1776. 6/83

Vermeer TS-44 on 75 IHC 1850 truck. Vermeer TS-30-32 tree spade on M-470 4x4 with loader. Vermeer TS-24 on case unloader. Ford 4500 diesel tractor, loader, backhoe, Vermeer M-50 4x4 articulated tractor with 6 way dozer 8' backhoe and ditcher. Versatile Bronco 4x4 articulated loader, cab. Case 430 lock turf tractor. Other landscape related equipment, (312) 438-5101. 4/83

A Finn Equal Straw Mulcher, excellent condition. \$8,000. Newark, OH (614) 345-0207. 4/83

For Sale—50 GPM Bean and truck, 69' 600 gallon Jeep motor. Electric Hose Reel, on 1966 International 1600 Loadstar \$8500. RotoMist, Bean 91, 100 gallon \$6500. 1982 50 GPM Bean, 1000 gallon stainless steel mounted on 67' Chevy 60 series, perfect, hose reel, hose, refiller, gun, everything \$18,000. 300 gallon fiberglass 20 GPM Bean, Briggs reel, hose, gun \$3,000. Tamke Tree Experts, Liberty Corner, NJ (201) 647-3537. 5/83

FOR SALE—Used and rebuilt Big John Tree Transplanters, 50", 60", 78", 88", some with trucks. Used Vermeer PS44 planter with truck, also new Big John Tree Transplanters. Call (501) 362-8161, toll free, (800) 643-8039. 4/83