

This magazine gives you good reading, good writing and good arithmetic.

We present the information in our articles clearly, accurately and objectively. That's good writing. Which means good reading.

We present the information in our circulation statement clearly, accurately and objectively. That's good arithmetic.

BPA (Business Publications Audit of Circulation, Inc.) helps us provide precise and reliable information to both advertisers and readers.

An independent, not-for-profit organization, BPA audits our circulation list once a year to make sure it's correct and up to date. The audit verifies your name, your company, your industry and your job title.

This information enables our advertisers to determine if they are reaching the right people in the right place with the right message.

The audit also benefits you. Because the more a publication and its advertisers know about you, the better they can provide you with articles and advertisements that meet your information needs.

BPA. For readers it stands for meaningful information. For advertisers it stands for meaningful readers. Business Publications Audit of Circulation, Inc.

360 Park Ave. So., New York, NY 10010.



We make sure you get what you pay for.

Kut-Kwick Corp. outfront rotary mower has the maneuverability to cut and trim as a hydrostat as well as the reliability of a gear type transmission. The operator is ensured high degree of

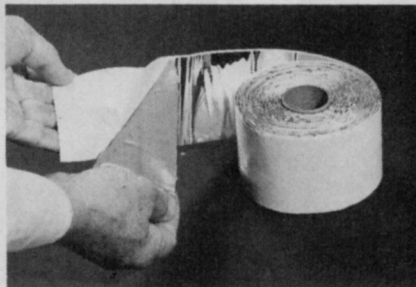


safety by being seated in the rear of the mower, and also has an unobstructed view of the work area. With cutting swaths of 36-in., 48-in. or 60-in., the mower has rack and gear steering and a semi-rigid deck design.
Circle No. 156 on Reader Inquiry Card

Toro is announcing a new liquid hydraulic oil dye, Toro P/N-44-2500. Developed for use on turf maintenance equipment, the dye gives the hydraulic

oil a red color for easy detection of leaks before a green area is severely damaged. The dye has been approved by suppliers of hydraulic components and does not affect the performance of the equipment. The oil is packaged in a 20 milliliter bottles which should be sufficient for a four to six gallon reservoir.
Circle No. 157 on Reader Inquiry Card

Deer-Away now offers Keep-Away Tree Worm Tape as a barrier against crawling insects, worms and larvae. The tape has an outer surface of slippery Mylar film and a backing of mastic adhesive protect by a peel off liner. The



Mylar prevents insects from crawling over the tape and the adhesive effectively bars them from getting under the

tape. The adhesive will not dry out and contains no toxic chemicals. It comes in 20 ft. rolls, in 2- or 3-in. widths.
Circle No. 158 on Reader Inquiry Card

Ditch Witch has introduced the model 350SX lawn plow for underground installations at depths of 12-24 inches. The rigid frame machine is available



with either gasoline or diesel powered engine. It has an operator's station, four wheel steering, and variable speed shaker control. Blades are available to lay television cables, power and communications cables and pull plastic pipes.
Circle No. 159 on Reader Inquiry Card

Continues on page 66




Heavy-duty features, lightweight price.

Hoffco WT-14H: A Tri-Kut™ steel-bladed weed trimmer/cutter, a monofilament grass trimmer/edger. Strong 13.8cc engine. Patented drive shaft system. Shoulder strap/hip pad and grass/dust shield included.

**TOUGH ON THE JOB.
EASY ON YOU.**



Hoffco, Inc. • Dept. WTT-582 • 358 N.W. F St. • Richmond, IN 47374
Circle No. 116 on Reader Inquiry Card



THE NEW YORK BOTANICAL GARDEN ILLUSTRATED ENCYCLOPEDIA OF HORTICULTURE
by Thomas H. Everett

10 volumes • \$525.00

This authoritative, up-to-date horticultural reference's material, language and style meet the needs of both the amateur and the professional. These volumes are compiled in an easy-to-use encyclopedic format with Latin/popular name cross referencing. You get 20,000 species...3600 genera...2500 cross references...10,000 photographs...and more! Also included are...

- plants and plant lore
- effective growing techniques
- handling pests
- and many other practical problems!

Slated to be the standard reference source in the field of horticulture. **ORDER YOUR SET TODAY!**

Send to: Book Sales, Harcourt Brace Jovanovich Publications
One East First Street, Duluth, MN 55802

YES! Send me _____ set(s) of THE NEW YORK BOTANICAL GARDEN ILLUSTRATED ENCYCLOPEDIA OF HORTICULTURE at \$525.00 per set. Payment must accompany order.

Signature _____ Date _____

Name _____

Street Address _____

City _____ State _____ Zip _____

Phone _____

Please allow 6-8 weeks for delivery.

**Put a WHIRLWIND FORCE to work
to SWEEP UP LEAVES, LITTER, etc!**

TAKE-ALONG 'BIG JOB' LOADER
HAUL THIS 16 horsepower Mi-T-VAC on any truck (or trailer we make) and clean up wet or dry problems. Fills dump truck with leaves in 25 minutes!

Lo-Blo, the Air-Broom®
HEAVY DUTY BLOWER-SWEEPER helps a small crew gather more leaves, trash, clippings in less time. For details on today's 5 to 45 horsepower models, call Area 216 947-2344.



8 inch hose reaches out 20 feet

Model 16 SVL

ATWATER STRONG DIVISION
OF GOUGLER INDUSTRIES, INC.
BOX 68 • ATWATER, OHIO 44201
LAWN EQUIPMENT SINCE 1949



MI-T-VAC VACUUMS
3600 CU. FT. / MINUTE

Circle No. 103 on Reader Inquiry Card

Presenting the aerators designed in the belief that all grounds are not created equal.



Some grounds are flat. Some are not. So how can you expect one aerator to work equally on both?

You can't. That's why Ryan designed the Tracaire® and the Renovaire®.

The Tracaire's 12-tine wheels are held in perfect horizontal alignment for uniform aeration on athletic fields and other flat areas.

The Renovaire features independently-mounted

tine wheels that hug the turf and deliver maximum penetration on irregular

terrain like golf courses and parks.

Both aerators give you a wide 6' swath and a choice of interchangeable tines (coring, slicing and open spoon) to match your soil conditions. And either can be equipped with a heavy-duty dragmat for breaking up cores.

The Ryan Tracaire and Renovaire. One of them is perfectly suited to your grounds.

CUR 2-5763

THE RYAN® TRACAIRE & RENOVAIRE

- Yes, I'd like a demonstration of the Tracaire.
- Yes, I'd like a demonstration of the Renovaire.
- Please send me your 1982 turf-care catalog.

Name _____

Title _____

Company _____

Address _____

City _____

State _____

ZIP _____

RYAN®

TURF-CARE EQUIPMENT

2206 Cushman, P.O. Box 82409

Lincoln, NE 68501

For the location of your nearest dealer, call 402-435-7208

© Outboard Marine Corporation, 1981 All rights reserved

EVENTS

The current issue of **WEEDS TREES & TURF** carries meeting dates beginning with the following month. To insure that your event is included, please forward it, 90 days in advance, to: **WEEDS TREES & TURF Events, 757 Third Ave., New York, NY 10017.**

Arizona Turfgrass Conference, University of Arizona, Tucson, AZ, **May 6-7.** Contact Prof. W.R. Kneebone, University of Arizona, College of Agriculture, Department of Plant Sciences, Tucson, AZ.

Menninger Flowering Tree Conference, Cypress Gardens Quality Inn, Cypress Gardens, FL, **May 20-21.** Contact Dan Wood, Florida Nurserymen & Growers Association, P.O. Box 16796, Temple Terrace, FL 33687, 813/985-8511.

Kentucky Cemetery Association Annual Convention, Executive Inn, Louisville KY, **June 10-12.** Contact Lewis Tingley, Resthaven Memorial Park, P.O. Box 18068, Louisville, KY 40218, 502/491-5950.

Florida Nurserymen and Growers Association Annual Convention, Doral Country Club, Miami, FL, **June 10-13.** Contact Barbie Derby, FNGA, P.O. Box 16796, Temple Terrace, FL 33687, 813/985-8511.

7th Nebraska Turfgrass Field Day & Equipment Show, Mead Field Lab, Lincoln, NE, **June 15.** Contact Robert Shearman, University of Nebraska, 377 Plant Science Bldg., Lincoln, NE 68583-0724, 402/472-2854.

Virginia Nurserymen's Association/Virginia Society of Landscape Designers Joint Summer Meeting, Holiday Inn, Richmond, VA, **June 20-22.** Contact Katherine Martin, PO 427, Richmond, VA 23204, 804/644-0912.

Outdoor Power Equipment Institute Annual Meeting, La Costa Hotel and Spa, Carlsbad, CA, **June 20-23.** Contact Dennis Dix, OPEI, 1901 L Street, NW, Suite 700, Washington, DC 20036, 202/296-3484.

American Bonsai Society Symposium 82, University of Maryland/College Park, **June 24-26.** Contact Tim Sobol, 1226 Woodrow Avenue, Norfolk, VA.

Western Canada Horticultural Trade Show, Pacific National Exhibition Grounds, Vancouver, BC, Canada, **July 12-13.**

American Society of Landscape Architects Southeast Regional Conference, Knoxville Hilton, Knoxville, TN, **July 15-17.** Contact Thomas Main, 3708 Kingston Pike, Knoxville, TN 37919, 615/632-4924.

American Association of Nurserymen Annual Convention, Sheraton Waikiki Hotel, Honolulu, HI, **July 17-21.** Contact Bob Lederer, 202/737-4060.

Society of American Florists Annual Convention, Fontainebleau Hotel, Miami, FL, **July 21-25.** Contact Darryl McEwen, 800/336-4743.

It drives your dirt to drink

...and drain too much or too little water, and you've got problems! ... unless you use Aqua-Gro the rootzone water management tool.

Aqua-Gro is specially formulated to eliminate problems from excessive moisture. Its unique blend ensures faster, more uniform water penetration and drainage. Aqua-Gro will provide the desired residual benefits, irrigation after irrigation, because it does not leach. Insufficient moisture can cause localized dry spots and browned out turf.



University of Georgia CES Turf Field Day, Athens, GA, **July 21**. Contact Dr. Gilbert Landry Jr., University of Georgia CES, Department of Agronomy, Athens, GA 30602, 404/542-2692.

American Sod Producers Association 16th Annual convention, Stouffer's Inn, Denver, CO, **July 21-23**. Contact ASPA, 9th and Minnesota, Hastings, NB 68901, 402/463-4683.

Residential Design Short Courses, Scottsdale Country Club, Scottsdale, AZ, **Basic Landscape Design, July 22-24; Landscape Construction Details, July 26-28, Advanced Landscape Drawing, July 30-31**. Contact ALCA, P. O. Box 27312, Tempe, AZ 85282.

Planting Designs Short Course, Ohio Agriculture Research and Development Center, Wooster, OH, **August 2-4**. Contact Fred Buscher, Wooster Area Extension Center, Ohio State University CES, 216/262-8176.

International Society of Arboriculture 58th Annual Conference, Galt House, Louisville, KY, **August 8-11**. Contact E.C. Bundy, ISA, PO 71, Urbana, IL 61801, 217/328-2032.

California Association of Nurserymen Convention, El Rancho Hotel, Sacramento, CA, **Sept. 21-23**. Contact Elaine Thompson, CAN, 1419-21 Street, Sacramento, CA 95814, 916/448-2881.

Florida Nursery and Allied Trades Show, Curtis Hixon Convention Center, Tampa, FL, **Sept. 24-26**. Contact Barbie Derby, FNGA, P.O. Box 16796, Temple Terrace, FL 33687, 813/985-8511.

Garden Industry of America Conference & Trade Show, Cincinnati Convention Center, Cincinnati, OH, **Sept. 30-Oct. 2**. Contact Linda Nelson GIA, Box 1092, Minneapolis, MN 55440, 612/374-5200.

Bedding Plants Annual Meeting and Trade Show, Sheraton Towers, Orlando, FL, **Oct. 3-7**. Contact Maria Voigt, Bedding Plants, Inc., P.O. Box 286, Okemos, MI 48864, 517/349-3924.

22nd Annual Southern California Turfgrass/Landscape Exposition, Orange County Fairgrounds, Costa Mesa, CA, **Oct. 6-7**. Contact Ed McNeill, SCTC, 1000 Concha Street, Altadena, CA 91001, 213/798-1715.

2nd National Urban Forestry Association Conference, Cincinnati Convention Center, Cincinnati, OH, **Oct. 10-14**. Contact Richard Pardo, AFA, 1319 Eighteenth Street NW, Washington, DC 20036, 202/467-5810.

Missouri Lawn & Turf Conference, Marriot Jan-tara, Osage, MO, **Oct. 11-13**. Contact John Dunn, 314/882-7511.

Pacific Horticultural Trade Show, Los Angeles Convention Center, Los Angeles, CA, **Oct. 13-15**. Contact Elaine Thompson, CAN, 1419-21st Street, Sacramento, CA 95814, 916/448-2881.

Interior Plantscape Association Fourth Annual Meeting and Trade Show, Portland Marriott, Portland, OR, **Oct. 25-27**. Contact Barry Wood, IPA, 11800 Sunrise Valley Drive, Reston, VA 22091, 703/476-8550.

12th Annual Educational Conference of the National Institute on Parks and Grounds Management, Holiday Inn O'Hare/Kennedy, Rosemont (Chicago), IL, **Oct. 31-Nov. 4**. Contact National Institute, PO 1936, Appleton, WI 54913, 414/733-2301.




Aqua-Gro provides fast relief. Aqua-Gro moves water into the rootzone reducing run-off and evaporation. More uniform water movement and distribution through the soil profile reduces summer stress and watering costs 30%-50%.

In addition, Aqua-Gro enhances the efficacy of pesticides and fertilizers, while eliminating the problems associated with thatch, compaction, and poor soil mixing.

So use Aqua-Gro. Available in liquid concentrate or spreadable granular from your local distributor. It's an important ingredient to insure the constant healthy growth of turf on grounds, playing fields, and golf courses.

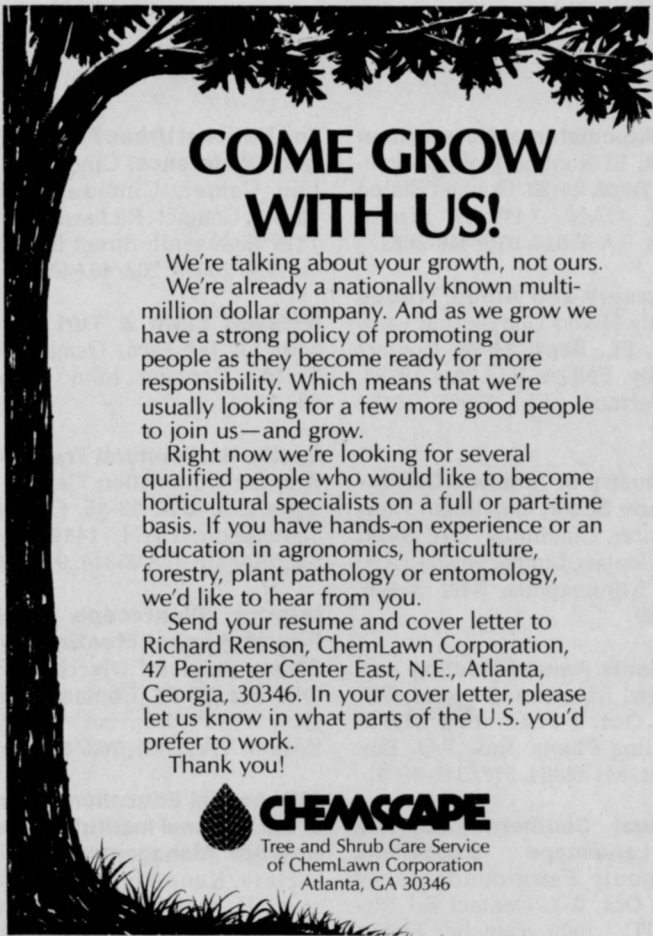
For free illustrated brochure and further information call TOLL FREE 800-257-7797

 AQUATROLS CORPORATION OF AMERICA, INC.
1432 Union Avenue, Pennsauken, N.J. 08110

AQUA-GRO®

It drives your dirt to drink...and drain.

Circle No. 102 on Reader Inquiry Card



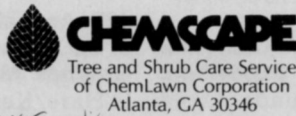
COME GROW WITH US!

We're talking about your growth, not ours. We're already a nationally known multi-million dollar company. And as we grow we have a strong policy of promoting our people as they become ready for more responsibility. Which means that we're usually looking for a few more good people to join us—and grow.

Right now we're looking for several qualified people who would like to become horticultural specialists on a full or part-time basis. If you have hands-on experience or an education in agronomics, horticulture, forestry, plant pathology or entomology, we'd like to hear from you.

Send your resume and cover letter to Richard Renson, ChemLawn Corporation, 47 Perimeter Center East, N.E., Atlanta, Georgia, 30346. In your cover letter, please let us know in what parts of the U.S. you'd prefer to work.

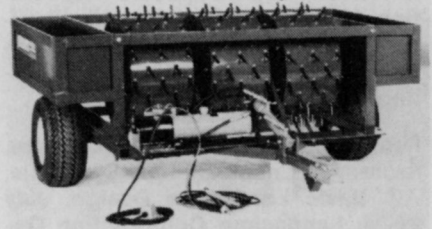
Thank you!



Circle No. 108 on Reader Inquiry Card

PRODUCTS from page 62

Dedoes Industries has designed a trailer package with an aerator and a hydraulic dump box. Both pieces of equipment can be pulled by most tractors and have remote control hydraulics. The aerator is available in a variety



of tine styles for tees, greens, fairways, lawns or institutional grounds. The dump box has a 1,000-lb. lift capacity and uses the same hydraulics as the aerator.

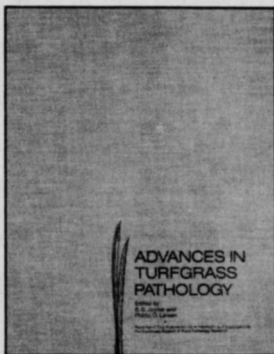
Circle No. 160 on Reader Inquiry Card

Briggs and Stratton has introduced the Magnetron electronic ignition system. Maintenance free, the unit uses a chip designed especially for it. The system is epoxy sealed so oil, moisture, dirt and corrosion do not affect it. A transistor module, with no moving parts replaces the points and condenser. The

Continues on page 72

Advances in Turfgrass Pathology

published by **HARCOURT BRACE JOVANOVICH PUBLICATIONS** in cooperation with **Dr. B. G. Joyner, Dr. P. O. Larsen and Chemlawn Corporation**



This extensive volume contains chapters on:

- turfgrass diseases
- cool v.s. warm season pythium blight and other related pythium problems
- snow molds of turfgrasses
- fairy rings
- leaf spot of Kentucky Bluegrass in Minnesota
- initial and field fungicide screening
- turfgrass disease resistance
- PLUS MUCH MORE!

ADVANCES IN TURFGRASS PATHOLOGY is a compilation of more than 23 reports and discussions by the nation's leading turfgrass pathologists. Explore the diseases that attack turfgrass. Find out how to conquer the battle of turfgrass diseases.

KEEP CURRENT WITH NEW IDEAS ON HOW TO HANDLE TURFGRASS PROBLEMS WITH ADVANCES IN TURFGRASS PATHOLOGY.

\$27.95* (hardcover)
\$18.95* (paperback)

COPIES LIMITED — DON'T DELAY!

Return this coupon to: Book Sales
Harcourt Brace Jovanovich Publications
One East First Street, Duluth, MN 55802

YES! Please send me _____ copy(ies) of ADVANCES IN TURFGRASS PATHOLOGY.

Name _____
Address _____
City _____ State _____ Zip _____
Phone _____

\$27.95* hardcover \$18.95* paperback
Quantity rates available on request.

A check or money order for _____ is enclosed.

*Please add \$3.00 per order plus \$1.00 per additional copy for postage and handling.

Please charge to my Visa, Master Card, or American Express (circle one)
Account Number _____
Expiration Date _____
Please allow 6-8 weeks for delivery. WTT 52

Inquiries serviced for 90 days from date of issue. For those countries outside the U.S., please apply appropriate postage before mailing.

READER SERVICE INFORMATION CARD

5-82 2

For more information on products or services mentioned in this issue, circle the corresponding numbers below, fill in appropriate information and mail today.

101	115	129	143	157	171	185	199	213	227
102	116	130	144	158	172	186	200	214	228
103	117	131	145	159	173	187	201	215	229
104	118	132	146	160	174	188	202	216	230
105	119	133	147	161	175	189	203	217	231
106	120	134	148	162	176	190	204	218	232
107	121	135	149	163	177	191	205	219	233
108	122	136	150	164	178	192	206	220	234
109	123	137	151	165	179	193	207	221	235
110	124	138	152	166	180	194	208	222	236
111	125	139	153	167	181	195	209	223	237
112	126	140	154	168	182	196	210	224	238
113	127	141	155	169	183	197	211	225	239
114	128	142	156	170	184	198	212	226	240

- 0050 CEMETERIES/MEMORIAL GARDENS
- 0055 HOSPITAL/HEALTH CARE INSTITUTIONS
- 0060 MILITARY INSTALLATIONS & PRISONS
- 0065 AIRPORTS
- 0070 MULTIPLE GOVERNMENT/MUNICIPAL FACILITIES
- OTHER TYPE OF FACILITY (PLEASE SPECIFY) _____

B. CONTRACTORS/SERVICE COMPANIES/CONSULTANTS:

- 0105 LANDSCAPE CONTRACTORS (INSTALLATION & MAINTENANCE)
- 0110 LAWN CARE SERVICE COMPANIES
- 0115 CUSTOM CHEMICAL APPLICATORS (GROUND)
- 0120 TREE SERVICE COMPANIES/ARBORISTS
- 0125 LANDSCAPE ARCHITECTS
- 0130 EROSION CONTROL COMPANIES
- 0135 EXTENSION AGENTS/CONSULTANTS FOR HORTICULTURE
- 0140 IRRIGATION CONTRACTORS
- OTHER CONTRACTOR OR SERVICE (PLEASE SPECIFY) _____

Your primary business at this location is: (check one only in A, B or C)

A. LANDSCAPING GROUND CARE FACILITIES:

- 0005 GOLF COURSES
- 0010 SPORT COMPLEXES
- 0015 PARKS
- 0020 RIGHTS-OF-WAY MAINTENANCE FOR HIGHWAYS, RAILROADS, & UTILITIES
- 0025 SCHOOLS, COLLEGES & UNIVERSITIES
- 0030 INDUSTRIAL & OFFICE PARKS/PLANTS
- 0035 SHOPPING CENTERS, PLAZAS AND MALLS
- 0040 PRIVATE/PUBLIC ESTATES & MUSEUMS
- 0045 CONDOMINIUMS/APARTMENTS/HOUSING DEVELOPMENTS/ HOTELS/RESORTS

C. SUPPLIERS:

- 0205 SOD GROWERS
- 0210 EQUIPMENT DEALER/DISTRIBUTOR
- OTHER SUPPLIER (PLEASE SPECIFY) _____

Approximately how many acres of vegetation do you maintain or manage? _____

What is your title? (please specify) _____

NAME _____

BUSINESS NAME _____ ADDRESS _____

CITY _____ STATE _____ ZIP _____ TELEPHONE () _____

AREA CODE

I WISH TO RECEIVE (CONTINUE RECEIVING) WEEDS, TREES & TURF EACH MONTH YES NO

SIGNATURE _____ DATE _____

Circle the Reader Service numbers of those items of interest to you.



NO POSTAGE
NECESSARY
IF MAILED
IN THE
UNITED STATES

BUSINESS REPLY CARD

FIRST CLASS PERMIT NO. 665 DULUTH, MINNESOTA

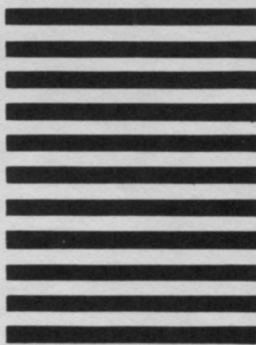
POSTAGE WILL BE PAID BY ADDRESSEE

READER SERVICE DEPARTMENT

WEEDS TREES & TURF

POST OFFICE BOX 6049

DULUTH, MINNESOTA 55806



**GET
MORE
FACTS**



COUNT THE YEARS OF DAVEY TREE EXPERIENCE.

Davey Tree is the world's original tree care specialist. We've been "keeping America green for 73 years."

Davey Tree is also the world's largest tree care specialist. Mainly because we've built a reputation for top quality work at reasonable costs.

This means we can offer you a full range of services for commercial and municipal properties.

Pruning, feeding, insect control, and tree surgery done by highly trained people using specialized equipment.

What's more, other tree companies can't match many of these services:

Our arborists are trained at the Davey Institute of Tree Sciences in Kent, Ohio.

A staff of entomologists, agronomists, and plant pathologists at no additional charge.

Patented ARBOR-GREEN® tree fertilizer with a two-year formula, available only from Davey.

And comprehensive insurance that fully protects our employees as well as public property.

In addition, we offer lawn fertilization and weed control through the Davey Lawnscape Division.

Circle No. 145 on Reader Inquiry Card

Another nice thing Davey will work with you to help develop budgets, surveys, and

specifications for your new or on-going tree care program.

For a free consultation, look us up in the Yellow Pages under "Tree Service." Or write to: Donald J. Shope, VP Tree Care Services, Davey Tree, 117 S. Water St., Kent, Ohio 44240.

Davey Tree. Our 73 years of experience is the one thing you can count on for all your tree care needs.

DAVEY TREE
Kent, Ohio • Coast to Coast and Canada
Keeping America Green Since 1909.



YOU CAN ROUNDUP®



AND



!