



Make sure your lawn care jobs don't come back to haunt you.

With labor and gasoline what they are today, the cost of a call-back is frightening. Add in the hidden costs of unhappy customers, and it's enough to scare you to death.

That's why you need DURSBAN* insecticide in at least two of your yearly applications. You see, in most parts of the country, insects are a problem in both the Spring and later on in the Summer. If they don't get you the first time, they just might get you the second.

And that can mean costly call-backs.

So think twice before you decide to skimp on DURSBAN. And think about how little it costs—as little as \$3.50 for a 10,000

sq. ft. lawn. Which is a lot less than the cost of a call-back.

DURSBAN insecticide gives you results you can count on, too. It gets all your major problem bugs. And it controls them for up to eight weeks instead of the more common four to six.

DURSBAN. Makes sure all your returns are happy returns. Available in 2E and double-strength 4E formulations.

See your Dow distributor. Also ask him about our new "DURSBAN delivers the goods" incentive program. Be sure to read and follow all label directions and precautions. Agricultural Products Department, Midland, Michigan 48640.

DURSBAN

Call-backs haven't a ghost of a chance.



DOW Chemical U.S.A.

*Trademark of The Dow Chemical Company.

Ad No.: 2901

Circle No. 115 on Reader Inquiry Card



MARCH 1982/VOL. 21, NO. 3



Jim McKay, GCSAA Show coverage.

20 Jacklin, Vermeer Found Strength in Landscaping

Continuing our 20th Anniversary celebration, two green industry giants look back at their growth over the last 20 years.

25 Landscape Weed Control Guide

A compendium of information from 20 leading weed scientists, *Weeds Trees & Turf* presents its definitive first annual weed control guide.

48 Proper Green Construction Solves Later Problems

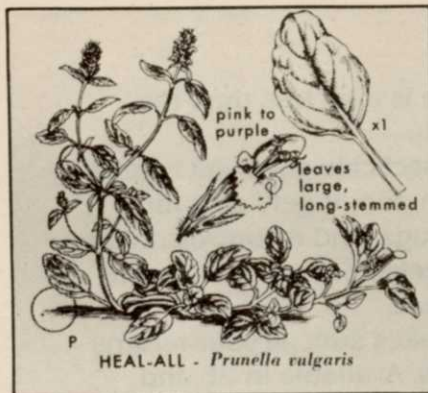
USGA Green Section Agronomist Brian Silva reveals how proper green construction now can stop problems from occurring later.

56 Specify Tolerant Trees For Air Polluted Areas

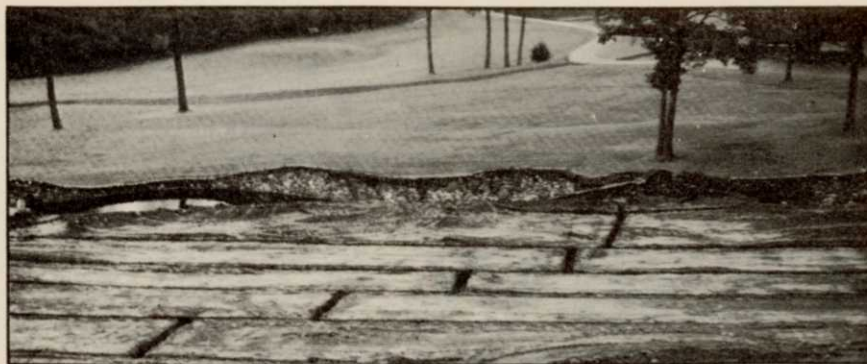
Karnosky and Myers continue with their second and final report on what trees fair best in polluted areas.

66 Fertilizer Timing and Methods For Landscape Trees

Douglas Chapman, Dow Gardens horticulturnist, reports on proper and improper fertilization of landscape trees.



Weed Control Guide-page 25



Golf Green Specifications-page 48

DEPARTMENTS

Outlook	4
Green Industry News	6
Golf Update	12
Landscape Update	14
Government Update	18
Vegetation Management	72
Letters	76
Products	78
Events	88
Classifieds	105
Advertiser Index	108

Robert L. Edgell, Chairman; Richard Moeller, President; Lars Fladmark, Executive Vice President; Arland Hirman, Treasurer; Thomas Greney, Group Vice President; Ezra Pincus, Group Vice President; Larry Witchel, Group Vice President; Joe Bilderbach, Vice President; James Gherna, Vice President; George Glenn, Vice President; Harry Ramaley, Vice President.

WEEDS TREES & TURF (ISSN 0043-1753) is published monthly by Harcourt Brace Jovanovich Publications. Corporate and Editorial offices: 757 Third Avenue, New York, New York 10017. Advertising offices: 757 Third Avenue, New York, New York 10017, 111 East Wacker Drive, Chicago, Illinois 60601 and 3091 Maple Drive, Atlanta, Georgia 30305. Accounting Advertising Production and Circulation offices: 1 East First Street, Duluth, Minnesota 55802. Subscription rates: United States \$15 per year; Canada \$18 per year. All other countries: \$40 per year. Single copies: \$2 in the United States and Canada; all other countries: \$4.50. Second class postage paid at Duluth, Minnesota 55806 and additional mailing offices. Copyright © 1982 by Harcourt Brace Jovanovich, Inc. All rights reserved. No part of this publication may be reproduced or transmitted in any form or by any means, electronic or mechanical, including photocopy, recording, or any information storage and retrieval system, without permission in writing from the publisher.

POSTMASTER: Send address changes to WEEDS TREES & TURF, P.O. Box 6198, Duluth, Minnesota 55806-9898.

A HARDCOURT BRACE JOVANOVIH PUBLICATION



What do turfgrass experts say about Pennant* ryegrass?

The Turf Trial results speak for themselves. Pennant is a champion. Rigidly controlled, comparative testing involving Pennant and competing varieties of perennial ryegrasses were conducted by turf experts across a broad region of the U.S.—the Pacific Northwest, the Southwest, the Northeast.

Pennant topped many of its competitors in these tests, including overseeding and heat tolerance trials in the Southwest. Some of the expert's findings are illustrated below.

Warm and cool season average turf score, Southern California first-year tests, 1979.

	Poor	Best
PENNANT	[Green bar]	
PENNFINE	[Light green bar]	
DIPLOMAT	[Light green bar]	
YORKTOWN II	[Light green bar]	
MANHATTAN	[Light green bar]	
CITATION	[Light green bar]	

Pennant was best among 12 varieties tested for red thread disease (*Corticium fuciforme*) in 1-year average, 1979-80. Western WA. (Low score = Best).

PENNANT	20.7%
CITATION	23.6%
DERBY	26.3%
PENNFINE	30.4%
MANHATTAN	40.4%
YORKTOWN II	47.8%

Percent winter injury, Adelphia, N.J. March 1978. (10 of 26 varieties tested showed no significant injury.)

PENNANT	0%
MANHATTAN	0%
CITATION	11%
DERBY	14%
PENNFINE	18%
LINN	38%

Average Turf Performance scores, February 1980. Southern Arizona turf overseeding on Tifgreen Bermuda. Sixteen entries seeded October 1979. (10 = Best).

PENNANT	7.7
PREMIER	7.3
REGAL	6.3
CBS	5.7
DERBY	5.5
ANNUAL	2.3

Turf performance scores. North Brunswick, N.J. 1975-78. (9 = Best).

YORKTOWN II	6.4
PENNANT	6.3
CITATION	5.9
DERBY	5.4
PENNFINE	5.4
MANHATTAN	5.2

Reaction to brown patch disease (*Rhizoctonia*), Adelphia, N.J., 1978. (9 = least damage)

PENNANT	7.5
YORKTOWN II	7.0
CITATION	7.0
REGAL	6.3
DERBY	6.2
PENNFINE	5.8

Pennant was best among 57 varieties tested for sod webworm tolerance (lawn moth - *Crambus* spp. of the order Lepidoptera), Adelphia, N.J., August, September, October 1980.

	Poor	Best
PENNANT	[Green bar]	
PREMIER	[Light green bar]	
REGAL	[Light green bar]	
DIPLOMAT	[Light green bar]	
CITATION	[Light green bar]	
FIESTA	[Light green bar]	
PENNFINE	[Light green bar]	
YORKTOWN II	[Light green bar]	
CARAVELLE	[Light green bar]	
DERBY	[Light green bar]	
LORETTA	[Light green bar]	
MANHATTAN	[Light green bar]	
LINN	[Light green bar]	

At Adelphia, N.J., Pennant showed the best performance under low fertility and drought stress. We call it "The Trophy Turf". We think you will, too.



For additional information regarding Pennant's truly remarkable Turf Trial performance, contact: Agriculture Service Corporation, 5240 Gaffin Rd., Salem, OR 97301, Telephone: (503) 581-8899.

* Plant variety protection pending and anticipated



OUTLOOK

By Bruce F. Shank, Executive Editor

Bob Earley Named Group Publisher

Bob Earley, editor and publisher of *Lawn Care Industry* magazine, has just been named Group Publisher of *Weeds Trees & Turf* and *Pest Control* magazines. He now shares his bearded presence with WTT readers as he did in 1976 when he was managing editor.

If you haven't heard one of his speeches in the last three years at regional turf shows you are rare. He has given thousands of speeches across the U.S. in an effort to help the lawn care industry organize and grow. Obviously, his efforts combined with others were successful.

This same energy and drive will now be partly channelled into WTT. The results should be obvious within the next few months. His favorite method is to put people in the magazine. No doubt we will have many more profiles in coming months of successful men and women in all Green Industries. He also likes to visit every possible landscape event to keep in touch with the market on a first hand basis.

Bob and I started with these magazines eight years ago. Despite all the talk of staff changes, he and I have been here. Now we have the reigns and will direct the magazine's energy as the years have taught us. Please let us hear from you if you have ideas which you think need work to serve the Green Industries.

No Shamu For Weeds

You may have seen the newspaper accounts in February about Harcourt Brace Jovanovich moving its headquarters to Orlando, Florida. That is completely true, but *Weeds Trees & Turf* and *Lawn Care Industry* will remain in New York.

The costs of office space in New York are simply insane. HBJ leases more than 300,000 square feet of office space in New York. It simply was crazy to permit rental rates to triple without some action. What would you do if your rent tripled?

On the other hand, New York is the absolute hub of the publishing world. Therefore, the business publications will remain here.

Books, educational, and other HBJ divisions will relocate to Sea World property in Orlando by the end of 1984. Yes, Shamu is related to *Weeds Trees & Turf*.

Since this occurred in February when the temperature was less than freezing, you might understand a little interest on our part in moving to sunny Florida. As much as we travel it really doesn't matter anyway.

Hawaii Is Popular 82 Show Location

Four industry associations will hold their annual meetings in Hawaii this year. The National Arborist Association and the American Sod Producers led the way in February and March on Maui. The American Association of Nurserymen and the American Society of Landscape Architects meet in Hawaii this summer.

I can vouch that Hawaii is a heavenly place. Somehow, it doesn't make sense under the current recession and building crunch to have meetings so far away. It suggests the real purpose of an annual meeting is to play. Maybe learning shows are passe.

Executive Editor
Bruce F. Shank, New York

Associate Editor
Thomas Paciello, New York

Publisher
Dick Gore, Atlanta

Group Vice President
Tom Greney, Chicago

Group Publisher
Robert Early, New York

Production Manager
Mary Lindskog, Duluth

Production Supervisor
Marilyn MacDonald, Duluth

Graphic Design
Dave Johnson, Duluth

Circulation Manager
Kristine Benike, Duluth

Directory Coordinator
Patty Rusch, Duluth

Reader Service Manager
Gail Kessler, Duluth

Promotion Director
Linda Winick, New York

OFFICES

ATLANTA
 3091 Maple Drive
 Maple Center One Building
 Atlanta, GA 30305
 (404) 233-1817

NEW YORK
 757 Third Ave.
 New York, NY 10017
 Editorial: (212) 888-2563 (or 2892)

CHICAGO
 111 East Wacker Drive
 Chicago, IL 60601
 (312) 938-2344

SEATTLE
 1333 N.W. Norcross
 Seattle, WA 98177
 (206) 363-2864

DULUTH
 120 West Second Street
 Duluth, Minn. 55802
 (218) 727-8511

MARKETING REPRESENTATIVES

James R. Brooks
 Atlanta (404) 233-1817

Dick Gore
 Atlanta (404) 233-1817

Ron Kempner
 Atlanta (404) 233-1817

Robert Mierow
 Seattle: (206) 363-2864



Member; American Business Press, Business Publications Audit, National Golf Foundation, American Sod Producers Association, Associated Landscape Contractors of America, National Landscape Association, Horticultural Research Institute.

Subdue.

Controls Pythium blight and damping-off.

No other fungicide works as well as Subdue® against Pythium damping-off and blight because only Subdue has two-way action against these diseases.

First, Subdue gives you systemic control that protects grasses from the inside out. Second, it works in the soil to control Pythium by contact action. Two-way action that keeps turf healthy.

In established turf, Subdue is an ideal preventative treatment for Pythium blight. Plus in newly seeded or overseeded turf, you

get protection from Pythium damping off and blight.

Subdue provides effective control for 10-21 days. Longer residual control than other Pythium fungicides. So Subdue can help you reduce application trips and labor costs. But just as important, Subdue fits

your total program because it's compatible with most other fungicides.

Subdue gives you protection like you've never had. Subdue, the only fungicide for Pythium with two-way action.



GREEN INDUSTRY NEWS

GCSAA SHOW

Superintendents' Show Super Successful

Over 7400 golf course superintendents and related industry personnel trekked to New Orleans to participate in the GCSAA Turfgrass Conference and Trade Show. Both the host city and the conference lived up to expectations.

Many superintendents and exhibitors took advantage of the Bourbon Street locale. On any evening of the week-long show, superintendents could be spotted doing their best to bolster the New Orleans economy by dining at Antoine's, Galatoire's or The Andrew Jackson or sipping Hurricanes (a local potable) at Pat O'Brien's. Some exhibitors customized their promotions to tie-in with the local atmosphere. Rain Bird Sprinkler Mfg. Corp., Glendora, CA, offered horse-drawn carriage tours and brochures of the French Quarter. Rhone-Poulenc Chemical Co., Monmouth Junction, NJ, sponsored an evening at the club of the famous jazz trumpeter Al Hirt.

Early arrival was encouraged and

the show profitted from good attendance at the day-long pre-conference seminars on Saturday and Sunday. While the opening session was planned for Monday and the trade show for Tuesday, over 200 guests of the Marriott Hotel (many of whom were superintendents) received a 6 am wake-up call Sunday morning from fire engines battling a blaze adjacent to the hotel. The fire was quickly brought under control and though the Marriott suffered minor smoke damage to its facade, the greatest loss to the guests seemed to be a good night's sleep. For those guests who managed to sleep through the cacophony of the early morning fire engines, a fresh crew of firemen tracked through the lobby to douse a small fire in the trash chute later in the day.

With the pre-conference activities anything but dull, the opening session got off without a hitch. The Grand Ballroom of the New Orleans Hilton was



Ron Fream's seminar on employee motivation.

filled to near capacity by 9 a.m. as the audience applauded the GCSAA awards presentation. Paul Voykin, golf course superintendent of Briarwood Country Club, Deerfield, IL, received the Leo Feser Award for his article, "Overgrooming is Overspending." Additionally, editors of 12 newsletters published by the association's chapters received Chapter Newsletter Editor Awards. For outstanding service to the golf course superintendent's profession, Distinguished Service Awards were presented to Milton Bauman, GCS, Seattle Golf Club; Sherwood Moore, GCS, Winged Foot Golf Club, Mamaroneck, NY; Al Radko, retired national director of the USGA Green Section; and Ben Warren, founder of Warren's Turf Nurseries.

The highlight of the opening session was the keynote address delivered by Jim McKay, ABC-TV sportscaster. An avid golfer who also anchors ABC-TV's golf telecasts, McKay explained to the crowd that he views the superintendent's job as an art. "I appreciate the art of what you do," said McKay. "In golf, the surface plays a more important part in the game than in almost any other sport." He regaled the audience

Continues on page 12



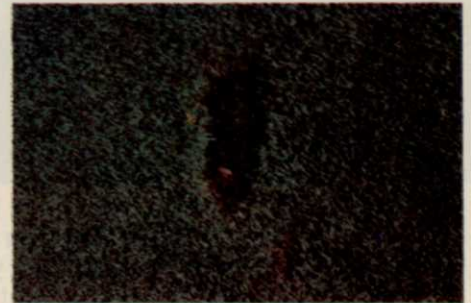
Sunday morning fire next to New Orleans Marriott Hotel.

Aronimink Golf Club uses 50/50 Mix of Pennncross and Penneagle to save water...



50/50 Mix on Number 9 Fairway

Pennncross germinating in divot



Aronimink Golf Club, Philadelphia, PA

Proof that two "Halves" make a better hole

PENNCROSS

1. Increased hybrid vigor
2. Widely Adapted
3. Aggressively Competes
4. The best Bentgrass available for over 25 years
5. Proven performance throughout the world

"The Old Standby"

For the name of your nearest Pennncross/Penneagle dealer, call or write:

TEE-2-GREEN CORP.

**P. O. Box 250
Hubbard, OR 97032
Toll free: 1-800-547-0255
TWX: 510-590-0957**

Ten minute slide presentation available on loan. Call or write:

Tee-2-Green Corp.
Information Coordinator
1349 Capitol Street NE
Salem, Oregon 97303
503/363-1022

PENNEAGLE

1. Dark green color
2. Upright, tighter growth
3. Lower cutting (7/64" for tournament play)
4. More economical
5. Better disease resistance
6. Tighter growth habits

"The New Standard"



Banvel® 4-S Herbicide gets a powerful new tank-mix label. So you'll get all the extras.



Banvel® 4-S Herbicide has a new label that gives you greater application flexibility. You can now tank-mix Banvel 4-S to add more weeds to your controlled list. And to get all the extras you want in a tough, dependable herbicide.

Extra options for tank-mixing.

You can now use Banvel 4-S Herbicide in a variety of combinations. Tank-mix it with 2, 4-D. Or MCPA. MCPP. Even bromoxynil. More than ever, Banvel 4-S fits your tank-mix preferences.

Extra control in a weed and feed program.

With it's new label, Banvel 4-S can be applied using either sprayable liquid fertilizer or water as the carrier.

Extra broadleaf weed control.

The new Banvel 4-S label puts you in control of more weeds, including many of your worst problem broadleaves.

Extra application flexibility.

You're no longer limited to one application per year with Banvel 4-S Herbicide. Used at low rates, Banvel 4-S can be applied in retreatment programs up to two pints per acre during a growing season. Plus, Banvel 4-S can now be used on non-cropland, brush areas, fencerows and roadways, as well as turf and lawns.

Check all the extras you get with Banvel 4-S Herbicide's powerful new tank-mix label. See your lawn or turf chemical supplier today for more information.

*Banvel Herbicide is a registered trademark of Velsicol Chemical Corporation. Before using any pesticide, please read the label.



VELSICOL
CHEMICAL CORPORATION

Velsicol Chemical Corporation,
World Headquarters
341 East Ohio Street, Chicago, Illinois 60611

Circle No. 163 on Reader Inquiry Card

Inquiries serviced for 90 days from date of issue. For those countries outside the U.S., please apply appropriate postage before mailing.

READER SERVICE INFORMATION CARD

3-82 1

For more information on products or services mentioned in this issue, circle the corresponding numbers below, fill in appropriate information and mail today.

101	115	129	143	157	171	185	199	213	227
102	116	130	144	158	172	186	200	214	228
103	117	131	145	159	173	187	201	215	229
104	118	132	146	160	174	188	202	216	230
105	119	133	147	161	175	189	203	217	231
106	120	134	148	162	176	190	204	218	232
107	121	135	149	163	177	191	205	219	233
108	122	136	150	164	178	192	206	220	234
109	123	137	151	165	179	193	207	221	235
110	124	138	152	166	180	194	208	222	236
111	125	139	153	167	181	195	209	223	237
112	126	140	154	168	182	196	210	224	238
113	127	141	155	169	183	197	211	225	239
114	128	142	156	170	184	198	212	226	240

Your primary business at this location is: (check one only in A, B or C)

A. LANDSCAPING GROUND CARE FACILITIES:

- 0005 GOLF COURSES
0010 SPORT COMPLEXES
0015 PARKS
0020 RIGHTS-OF-WAY MAINTENANCE FOR HIGHWAYS, RAILROADS, & UTILITIES
0025 SCHOOLS, COLLEGES & UNIVERSITIES
0030 INDUSTRIAL & OFFICE PARKS/PLANTS
0035 SHOPPING CENTERS, PLAZAS AND MALLS
0040 PRIVATE/PUBLIC ESTATES & MUSEUMS
0045 CONDOMINIUMS/APARTMENTS/HOUSING DEVELOPMENTS/ HOTELS/RESORTS

- 0050 CEMETERIES/MEMORIAL GARDENS
0055 HOSPITAL/HEALTH CARE INSTITUTIONS
0060 MILITARY INSTALLATIONS & PRISONS
0065 AIRPORTS
0070 MULTIPLE GOVERNMENT/MUNICIPAL FACILITIES
 OTHER TYPE OF FACILITY (PLEASE SPECIFY) _____

B. CONTRACTORS/SERVICE COMPANIES/CONSULTANTS:

- 0105 LANDSCAPE CONTRACTORS (INSTALLATION & MAINTENANCE)
0110 LAWN CARE SERVICE COMPANIES
0115 CUSTOM CHEMICAL APPLICATORS (GROUND)
0120 TREE SERVICE COMPANIES/ARBORISTS
0125 LANDSCAPE ARCHITECTS
0130 EROSION CONTROL COMPANIES
0135 EXTENSION AGENTS/CONSULTANTS FOR HORTICULTURE
0140 IRRIGATION CONTRACTORS
 OTHER CONTRACTOR OR SERVICE (PLEASE SPECIFY) _____

C. SUPPLIERS:

- 0205 SOD GROWERS
0210 EQUIPMENT DEALER/DISTRIBUTOR
 OTHER SUPPLIER (PLEASE SPECIFY) _____

Approximately how many acres of vegetation do you maintain or manage? _____

What is your title? (please specify) _____

NAME _____

BUSINESS NAME _____ ADDRESS _____

CITY _____ STATE _____ ZIP _____ TELEPHONE (____) _____

AREA CODE

I WISH TO RECEIVE (CONTINUE RECEIVING) WEEDS, TREES & TURF EACH MONTH YES NO

SIGNATURE _____ DATE _____

Circle
the
Reader
Service
numbers
of those
items of
interest
to you.



NO POSTAGE
NECESSARY
IF MAILED
IN THE
UNITED STATES

BUSINESS REPLY CARD

FIRST CLASS PERMIT NO. 665 DULUTH, MINNESOTA

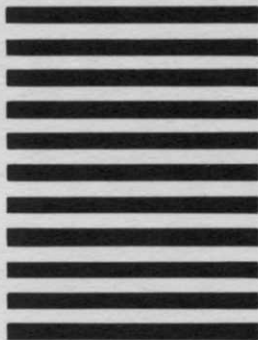
POSTAGE WILL BE PAID BY ADDRESSEE

READER SERVICE DEPARTMENT

WEEDS TREES & TURF

POST OFFICE BOX 6049

DULUTH, MINNESOTA 55806



**GET
MORE
FACTS**