

THESE INSECTS HAVE ONE THING IN COMMON

They now can be
controlled by a **NEW**
effective carbamate
insecticide **TURCAM**®

TURCAM Insecticide offers the professional turf and ornamental care specialists a new effective broad spectrum insecticide for the control of a wide range of ornamental and turf pests including gypsy moth, Eastern tent caterpillar, certain scale insects and weevils, Japanese beetles, sod webworms, chinch bugs, mole crickets, white grubs and various nuisance pests such as fleas, wasps and fireants.

In addition to controlling these and many other pests, TURCAM

- Will not damage your ornamentals
- Will not get tied up in your turf thatch
- Is odorless
- Is suitable for use in Liquid Systems.

For further information on TURCAM including full labeling and recommendations for use please contact your local distributor or write to the address below.

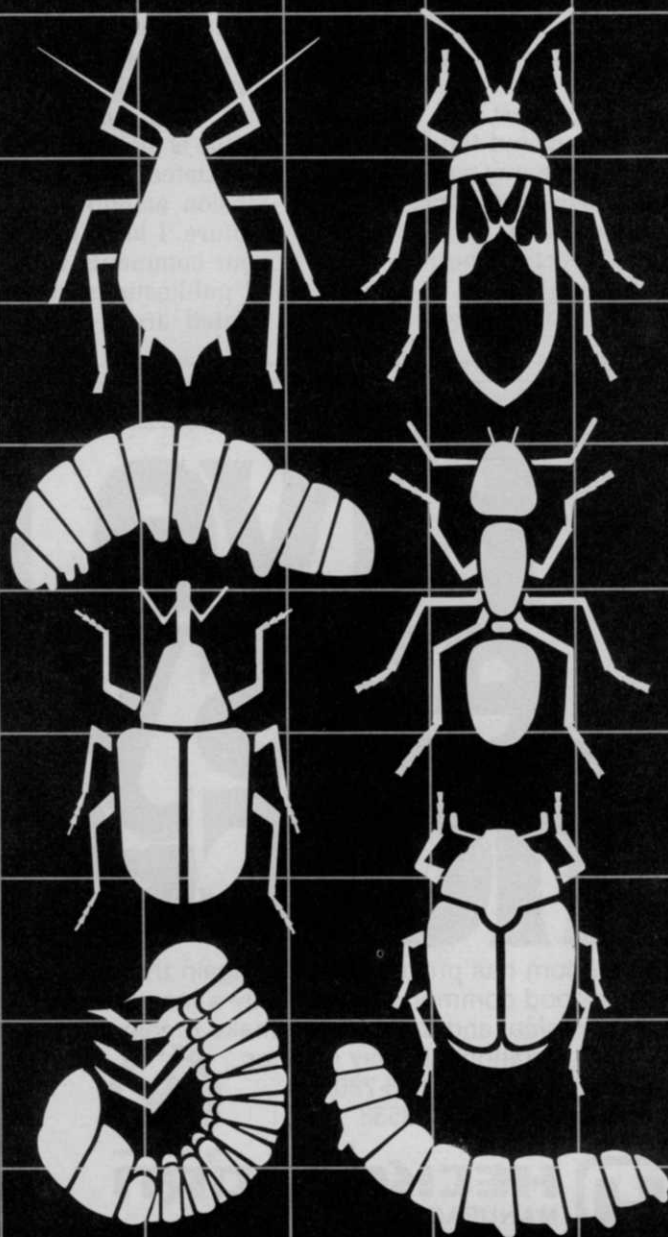
TURCAM®

Broad Spectrum Insecticide



TM

BFC Chemicals, Inc.
4311 Lancaster Pike
Wilmington, DE 19805



LETTERS

Al says thanks

To say the very least, I was proud and pleased to become the recipient of Weeds Trees & Turf's first annual Man of the Year Award. It is a signal honor indeed . . . one totally unexpected . . . but one that I will treasure forever.

The beautiful silver trophy, inscribed to commemorate the occasion, will hold a prominent place of display in our home.

My sincere thanks to you and to all responsible for casting their votes for me.

Always the best and continued success throughout the future. If I can help you in any way, please do not hesitate to contact me.

Alexander Radko
National Director Emeritus
Green Section
United States Golf Association

Al:

The pleasure truly is ours. We sincerely saw you as the proper recipient and hope you sense the appreciation we tried to communicate by the award. On the other hand, we have no intention of letting you retire for real. You are a natural resource too valuable to retire. Edit.

Readers heed the call

I hope the readers of your magazine will take heed to your "Outlook" editorial of the April, 1982 issue. What you so accurately describe is the dilemma of leadership associated with research and extension activities throughout agriculture. I hope that you will share your comments with other editors of publications in agriculture and related areas. Hopefully, they in

turn will contact their constituents. Charles Laughlin
Department Head
Plant Pathology and Weed Science
Mississippi State University
Mississippi State, Miss 39762
Dr. Laughlin:

That is a lot of hoping. I'm not exactly Jerry Lewis, but the cause is closer to us than any other at this time. If research dollars dry up, progress will slow markedly. The question is, in terms of Reaganomics, will private industry pick up the slack? Consider the cost of chemical development and retooling changes for equipment, and I think the answer is doubtful.

The only real hope is for readers to get out stationary and write their state representatives today. And then write them a month from now, and again and again until the point is made. Edit.

Five easy choices!

Heckendorn has proven time and again that it makes good common sense to buy a mower that is economical and durable. We make it easy for you in 5 variations. 5 easy choices. Call Toll Free 1-800-835-7805 or in Kansas, 1-800-362-3538



HECKENDORN
MANUFACTURING CO., INC.

CEDAR POINT, KANSAS 66843 / 316-274-4201



First Choice — 88"



Second Choice — 72"



Third Choice — 62"



Fourth Choice — 50"



Fifth Choice — 36"

This magazine gives you good reading, good writing and good arithmetic.

We present the information in our articles clearly, accurately and objectively. That's good writing. Which means good reading.

We present the information in our circulation statement clearly, accurately and objectively. That's good arithmetic.

BPA (Business Publications Audit of Circulation, Inc.) helps us provide precise and reliable information to both advertisers and readers.

An independent, not-for-profit organization, BPA audits our circulation list once a year to make sure it's correct and up to date. The audit verifies your name, your company, your industry and your job title.

This information enables our advertisers to determine if they are reaching the right people in the right place with the right message.

The audit also benefits you. Because the more a publication and its advertisers know about you, the better they can provide you with articles and advertisements that meet your information needs.

BPA. For readers it stands for meaningful information. For advertisers it stands for meaningful readers. Business Publications Audit of Circulation, Inc.
360 Park Ave. So., New York, NY 10010.



We make sure you get what you pay for.

PRODUCTS

Jacobsen is offering a new hydraulically-driven vertical reel mower that interchanges with standard hydraulic fairway reel units. The mower cuts turf vertically to remove and control thatch



with vertical blade rotation opposite that of standard reels. More information on the mower is available in new literature available from the Jacobsen division of Textron.

Circle No. 145 on Reader Inquiry Card

Clearman has added a wobbling turbine head to its line of lawn and garden



sprinklers made of black sun-resistant nylon with only one moving part. The 5F series offers a maximum coverage of 44-ft. in diameter and droplet size can be controlled, resulting in flow rates from 0.5 gpm to 5.0 gpm.

Circle No. 146 on Reader Inquiry Card

Deer-Away has formulated a deer repellent in powder form. BGR Powder can be applied in dew and light rain because of a hygroscopic agent that absorbs the water and sticks tightly to the

vegetation. Deer Away Powder is registered with the EPA for repelling mule deer, white tailed deer, and Roosevelt elk. It comes packaged in 8 and 16-oz. shaker containers and five lb. bulk packages.

Circle No. 147 on Reader Inquiry Card

Geerpres is introducing a new line of professional sprayers made of high density polyethylene, galvanized or



Continues on page 56



NEW SPRAY NOZZLES and ACCESSORIES From SPRAYING SYSTEMS CO.

NEW— QuickJet™ Nozzle Assemblies

A unique new system of quickly interchangeable self-aligning spray nozzles and spray tips. To provide choice of spray droplet size, in full cone, hollow cone and flat spray patterns. 3/4" NPT (M) inlet conn. Write for Bulletin 195.

NEW— Model 146 Directofvalve.

For remote "on-off" control of spray nozzles and booms from operator's location. Operates on 12 VDC system. Pressure range from 0 to 65 psi. 1/4" NPT (F) spray line connection. Write for Data Sheet 16108.

NEW— Model 244 Electrical Regulating Valve

For remote pressure control in agricultural spray applications. 3/4" NPT (F) inlet and outlet conn. Operates on a 12 VDC system. Pressures to 100 psi. Write for Data Sheet 16994.

NEW— 3/4" and 1" Nylon Liquid Strainers

Strainer head and bowl made of reinforced Nylon material for pressures to 75 psi. Threaded bowl can be easily unscrewed by hand. Write for Data Sheet 15353.

SPRAYING SYSTEMS CO.

North Ave. at Schmale Rd., Wheaton, IL 60187
Telephone: 312 665-5000 / Telex No. 72-8409

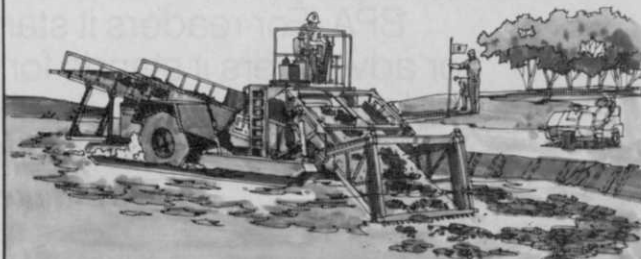
Circle No. 136 on Reader Inquiry Card

Clean Up Lakes, Ponds, River Fronts.

New Aquatic Weed Harvester removes both floating and submerged weeds to restore natural ecological balance and preserve fish habitat. Two independently controlled paddle wheels resist clogging even in heavy golf pond weed beds... unsurpassed maneuverability even around marina docks. Floats in inches of water, permitting cutting close to shore. Rotating vertical side feeders direct weeds into automatic conveyor to keep cuttings from floating away. Easily trailered from pond to pond without damaging turf. Backed by Mud Cat's international reputation for reliability and ease of operation.



P.O. BOX 16247, ST. LOUIS PARK, MINN. 55416 U.S.A.
IN U.S. CALL TOLL FREE 800-328-7333
INTERNATIONALLY, OR FROM MINNESOTA PHONE 612/893-6400
TELEX 29-0767



A Division of National Car Rental System, Inc.

Circle No. 126 on Reader Inquiry Card

For the 1981 NFC Playoff, the Enkaturf® system made a superbowl of Candlestick Park.



ENKATURF AND ENKAMAT ARE REG. TMS OF AMERICAN ENKA CO., ENKA, NC, A PART OF ALZONIS INC., AND ARE THE SUBJECT OF A NUMBER OF U.S. PATENTS.

Candlestick Park wasn't exactly in good condition before the NFC Playoff. **Football** teams seemed to tackle the San Francisco Forty-Niners' turf more than they did the Forty-Niners. And vice versa.

That was before 14,600 square feet of Enkaturf® webbing was installed under two inch sod between the field's hash marks, thus forming one more Enkaturf system success.

After installing the Enkaturf system, Candlestick Park was subjected to heavy rainfalls until just prior to the first playoff game. The Enkaturf system performed exceptionally well in spite of the difficult conditions.

The Enkaturf system gives turfgrass the protection it needs to grow and heal itself. The webbing is structured to keep turf anchored and resilient even in heavy traffic areas. Compaction, aeration, maintenance costs and players' injuries are reduced tremendously.

Europe has been using Enkaturf on its playing fields for approximately 15 years, concentrating on **soccer fields**.

Eleven of the recently-rated top 40 **golf courses** in the country have made use of the Enkaturf system where soil erosion or excess

wear had been a problem. One golf club put 10,000 square feet of Enkaturf on their driving range. Other golf courses have used the Enkaturf system for heavywear areas, entrance ways to cart paths, pond stabilization and for the construction of flood plains through golf course facilities where natural vegetation is far more desirable aesthetically than using concrete or riprap.

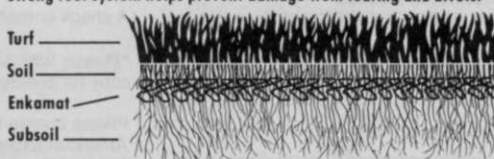
Even more and more airfield ground engineers are considering the reliability of Enkaturf in **airstrips**. The Wellington Aero Club in West Palm Beach, Fla., reinforced their 4000-foot grass runways with Enkaturf. The stabilizing Enkaturf system provides a smooth, shock-absorbing surface. A smooth landing.

The Enkaturf system is used in **baseball fields, track fields, tennis courts, playground camping sites** especially near mobile homes, you name it.

Enkaturf is durable. It's safe from humic acid and soil fungi. You can't lose. Candlestick Park didn't lose: The Enkaturf system made it a winner. The ball is in your field now. Contact: Enkaturf Dept., at American Enka Co., Enka, NC 28728. (704) 667-7713.

Enkaturf is a three dimensional resilient webbing resistant to decay, which provides a permanent fibrous matting that gives the sod structural strength. This can not be achieved by any other existing medium, natural or man-made.

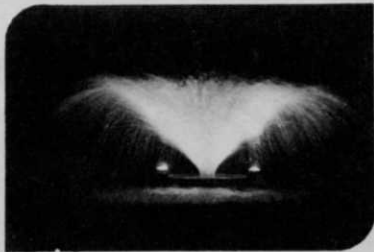
Enkaturf reinforcement system stabilizes turf. Roots can spread and grow in subsoil making the turf more durable. Strong root system helps prevent damage from tearing and divots.



The Enkaturf System by ENKA

OTTERBINE[®]

Spray Sculpture Floating Fountains. Now you can clean up ponds and lakes naturally.



By day or night, these floating fountains help keep your water clean and odor-free naturally, and create a sparkling spray display that enhances the beauty of any surrounding. They are available in a variety of sizes and spray pattern designs, with optional Fountain-Glo lights.

Otterbine Creates Beauty . . . By Solving Problems

OTTERBINE AERATORS
BAREBO, INC.

RD 1, P.O. Box 217, Emmaus, PA 18049 215-965-6018

Circle No. 103 on Reader Inquiry Card

PRODUCTS from page 54

stainless steel. Available in 1-1/2 and 3 gallon sizes, they deliver up to 60 pounds of pressure. Standard features are a pump with rod, and a 12- or 16-in. brass wand. Pressure gauge, Viton seals, 58-in. hose and nozzles are optional.

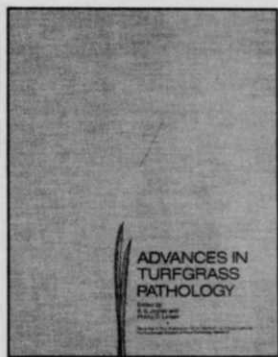
Circle No. 148 on Reader Inquiry Card

BASF's Agricultural Research Station has found that insulating glass greenhouse walls with an ethyl-vinyl-acetate copolymer incorporating a pattern of bubbles that provides air space be-



Advances in Turfgrass Pathology

published by **HARCOURT BRACE JOVANOVIH PUBLICATIONS** in cooperation with **Dr. B. G. Joyner, Dr. P. O. Larsen and Chemlawn Corporation**



This extensive volume contains chapters on:

- turfgrass diseases
- cool v.s. warm season pythium blight and other related pythium problems
- snow molds of turfgrasses
- fairy rings
- leaf spot of Kentucky Bluegrass in Minnesota
- initial and field fungicide screening
- turfgrass disease resistance
- PLUS MUCH MORE!

ADVANCES IN TURFGRASS PATHOLOGY is a compilation of more than 23 reports and discussions by the nation's leading turfgrass pathologists. Explore the diseases that attack turfgrass. Find out how to conquer the battle of turfgrass diseases.

KEEP CURRENT WITH NEW IDEAS ON HOW TO HANDLE TURFGRASS PROBLEMS WITH ADVANCES IN TURFGRASS PATHOLOGY.

\$27.95* (hardcover)

\$18.95* (paperback)

COPIES LIMITED — DON'T DELAY!

Return this coupon to: Book Sales
Harcourt Brace Jovanovich Publications
One East First Street, Duluth, MN 55802

YES! Please send me _____ copy(ies) of **ADVANCES IN TURFGRASS PATHOLOGY.**

Name _____
Address _____
City _____ State _____ Zip _____
Phone _____

\$27.95* hardcover \$18.95* paperback
Quantity rates available on request.

A check or money order for _____ is enclosed.

*Please add \$3.00 per order plus \$1.00 per additional copy for postage and handling.

Please charge to my Visa, Master Card, or American Express (circle one)
Account Number _____
Expiration Date _____
Please allow 6-8 weeks for delivery. WTT 62

tween glass, offers about 20% more insulation than conventional film. The sculptured film is made in double and triple deck versions and can be installed with tacks or adhesive.

Circle No. 149 on Reader Inquiry Card

Kubota has introduced a 29-hp tractor equipped with a hydraulic shuttle shifting transmission. The L355 SS is powered by a four cylinder water-



cooled diesel engine with a transmission providing eight forward speeds and eight backward. Standard features include wet disc brakes, safety starting switch, hydraulic pump, swing drawbar, foot rests, fender handrail and hazard lamps.

Circle No. 150 on Reader Inquiry Card

Vandermolen has developed a heavy-duty model Diadem Brush



Chipper powered by a 18-hp twin cylinder engine. It offers a rotor design with 1/2-in. thick cutting knives that can handle limbs of up to 2-in. in diameter. The unit is compact enough to be moved by one man when detached from the towing vehicle.

Circle No. 151 on Reader Inquiry Card

Flora and Fauna has designed the Treetite bracing kit. According to the company, the brace fosters good root growth without wire or ropes that can

cut or slip off the bark. Treetite comes with an expandable strap-tie, that expands as the tree grows, cord and stakes.

Circle No. 152 on Reader Inquiry Card

Ryerson offers steel landscape edging for long straight lines or plastic Ezy-Lok edging for free form design. The steel can be used as a retaining wall for driveways, walks, terraces and for line



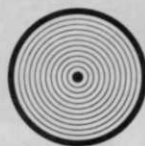
Continues on page 58

You can't kill a weed by watering it!

Sometimes applying a herbicide only means watering the very thing you're trying to kill. Now Micron Corp. has solved the problem with the **HERBI** Controlled Droplet Application sprayer.

The **HERBI** is a revolutionary approach to the application of herbicides. It provides better, cheaper, easier weed control along fences, roadways, ditches, around buildings and structures. The secret is its rotary atomizer—a spinning disc which produces consistent 250 micron-sized droplets, for ultra low volume spraying, eliminating the need for high volumes of water. It gives exact and thorough coverage without run off, chemical waste, or over-kill.

The **HERBI** is lightweight—about 7 pounds. It's also extremely versatile, easy to use and, most of all, economical. It's time to stop watering weeds and start killing them... with the **HERBI**.



HERBI™

MICRON
CORPORATION

P.O. Box 19698/Houston, Texas 77224
(713) 932-1405/Telex 79 2511 MICRONW HOU

Circle No. 123 on Reader Inquiry Card



definition around building perimeters. Available in 16 to 20-ft. lengths, it comes in several widths. According to the manufacturer, Ezy-Lok plastic edging resists weathering and soil acids and contains chemical inhibitors that prevent deterioration from ultra violet rays. It comes in 25-ft. lengths that can be locked together.

Circle No. 153 on Reader Inquiry Card

Conwed has published a brochure outlining the effectiveness of Hydro Mulch as a straw tackifier to promote turf establishment along roadways, strip mines, and building sites. The brochure cites independent studies that compare the product's performance to asphalt and the leading non-asphalt tackifier. Loading and application instructions are also featured in the pamphlet.

Circle No. 154 on Reader Inquiry Card

Framar Industrial has introduced a non-selective liquid weed killer to eliminate vegetation around fence lines, parking lots, railroad sitings and industrial sites. Recommended for non-cropland areas, the herbicide



should control a wide range of perennial and annual weeds. With the purchase of 20 gallons of the product, Framar is offering a free three gallon plastic tank sprayer.

Circle No. 155 on Reader Inquiry Card

Southern Hydro Mulch Supply is marketing a new soil moisturizer, Aqua Lox, for nursery, landscape, and seeding use. The product swells to

many times its weight when watered, to open air passages and maintain the moisture level. It can be used to protect plants in shipping and to aid in seed germination.

Circle No. 156 on Reader Inquiry Card

Allis-Chalmers has put out a bulletin describing its CD-5 chain drive tiller and the RT-5 rear tine tiller. Built for heavy duty work, the CD-5 has a sealed chain drive which runs in oil and is



fully protected from dirt and dust. The RT-5 has heavy tines to shred and mix stalks, mulch and green manure crops into the soil.

Circle No. 157 on Reader Inquiry Card

Continues on page 61

CHIPMUNK™ BRUSH CHIPPER

DEPENDABLE ECONOMICAL

IT'S COMPLETE - READY FOR ACTION

Features found only on more expensive chippers are standard on the Chipmunk Brush Chipper. Rugged, all-welded trailer frame takes to any road or terrain. Efficient, gas-fueled, four-cylinder engine delivers all the power you need. Machined steel flywheel guarantees the maximum in chipping power. Exclusive triangular operator guide makes brush loading easier. Exhaust chute has a high-volume air blower to keep chips moving. Replaceable, super-hard, chrome-alloy chipping blades. Chip deflectors for discharging chips into truck or to roadside. Single, locking battery/tool box. Reflectors, running lights. Adjustable tow bar, safety chains and folding jack.



"Depend on Chipmunk"



Call or write for literature.

Manufactured by the pioneer of brush chipping . . . with a nationwide service organization you can rely on.

Chipmunk Brush Chipper

50 E. Hamilton St., P.O. Box 901
Chalfont, PA 18914 Telephone (215) 822-0542

Inquiries serviced for 90 days from date of issue. For those countries outside the U.S., please apply appropriate postage before mailing.

READER SERVICE INFORMATION CARD

6-82 2

For more information on products or services mentioned in this issue, circle the corresponding numbers below, fill in appropriate information and mail today.

101	115	129	143	157	171	185	199	213	227
102	116	130	144	158	172	186	200	214	228
103	117	131	145	159	173	187	201	215	229
104	118	132	146	160	174	188	202	216	230
105	119	133	147	161	175	189	203	217	231
106	120	134	148	162	176	190	204	218	232
107	121	135	149	163	177	191	205	219	233
108	122	136	150	164	178	192	206	220	234
109	123	137	151	165	179	193	207	221	235
110	124	138	152	166	180	194	208	222	236
111	125	139	153	167	181	195	209	223	237
112	126	140	154	168	182	196	210	224	238
113	127	141	155	169	183	197	211	225	239
114	128	142	156	170	184	198	212	226	240

Your primary business at this location is: (check one only in A, B or C)

A. LANDSCAPING GROUND CARE FACILITIES:

- 0005 GOLF COURSES
0010 SPORT COMPLEXES
0015 PARKS
0020 RIGHTS-OF-WAY MAINTENANCE FOR HIGHWAYS, RAILROADS, & UTILITIES
0025 SCHOOLS, COLLEGES & UNIVERSITIES
0030 INDUSTRIAL & OFFICE PARKS/PLANTS
0035 SHOPPING CENTERS, PLAZAS AND MALLS
0040 PRIVATE/PUBLIC ESTATES & MUSEUMS
0045 CONDOMINIUMS/APARTMENTS/HOUSING DEVELOPMENTS/
HOTELS/RESORTS

- 0050 CEMETERIES/MEMORIAL GARDENS
0055 HOSPITAL/HEALTH CARE INSTITUTIONS
0060 MILITARY INSTALLATIONS & PRISONS
0065 AIRPORTS
0070 MULTIPLE GOVERNMENT/MUNICIPAL FACILITIES
 OTHER TYPE OF FACILITY (PLEASE SPECIFY) _____

B. CONTRACTORS/SERVICE COMPANIES/CONSULTANTS:

- 0105 LANDSCAPE CONTRACTORS (INSTALLATION & MAINTENANCE)
0110 LAWN CARE SERVICE COMPANIES
0115 CUSTOM CHEMICAL APPLICATORS (GROUND)
0120 TREE SERVICE COMPANIES/ARBORISTS
0125 LANDSCAPE ARCHITECTS
0130 EROSION CONTROL COMPANIES
0135 EXTENSION AGENTS/CONSULTANTS FOR HORTICULTURE
0140 IRRIGATION CONTRACTORS
 OTHER CONTRACTOR OR SERVICE (PLEASE SPECIFY) _____

C. SUPPLIERS:

- 0205 SOD GROWERS
0210 EQUIPMENT DEALER/DISTRIBUTOR
 OTHER SUPPLIER (PLEASE SPECIFY) _____

Approximately how many acres of vegetation do you maintain or manage? _____

What is your title? (please specify) _____

NAME _____

BUSINESS NAME _____ ADDRESS _____

CITY _____ STATE _____ ZIP _____ TELEPHONE () _____

AREA CODE

I WISH TO RECEIVE (CONTINUE RECEIVING) WEEDS, TREES & TURF EACH MONTH YES NO

SIGNATURE _____ DATE _____

Circle
the
Reader
Service
numbers
of those
items of
interest
to you.



NO POSTAGE
NECESSARY
IF MAILED
IN THE
UNITED STATES

BUSINESS REPLY CARD

FIRST CLASS PERMIT NO. 665 DULUTH, MINNESOTA

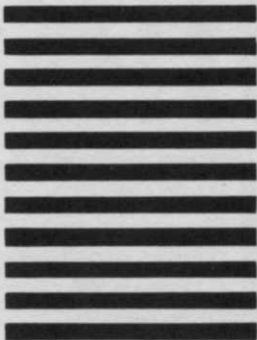
POSTAGE WILL BE PAID BY ADDRESSEE

READER SERVICE DEPARTMENT

WEEDS TREES & TURF

POST OFFICE BOX 6049

DULUTH, MINNESOTA 55806



**GET
MORE
FACTS**