

**T**here's hardly a mowing job you can think of that a John Deere 650 or 750 can't stand up to.

There's also hardly any other job you can think of that one of them will back away from.

So they can promise you maximum productivity and flexibility. And deliver it for years to come.

Because, besides a choice of three mowers—center or hitchmounted for grooming, and rotary for rougher cutting—you get an almost endless choice of capacity-matched attachments: front loaders, tiller, disk, box scrapers, front and rear blades, even a posthole digger and a post driver.

Now, having that kind of choice is important. And so is knowing that all these are designed to attach quickly, without ever having to fabricate a fit or hope that someone else's attachment will work.

**B**ut most important of all are the tractors all those attachments attach to: John Deere 650 and 750 Task-Master™ Diesel Tractors.

They're high-clearance 14.5- and 18-PTO-hp tractors powered by fuel-slinging, long-lived diesel engines. On either model, standard features include 8 forward and 2 reverse speeds, 540-rpm rear power takeoff, differential lock, and a Category 1 3-point hitch. Plus options that include mechanical front-wheel drive, and traction-tread or high-flotation tires.

All features you expect to find only on much larger tractors.

And maybe best of all, they're priced right. Plus your John Deere dealer has a service and parts organization that understands what downtime can do to an owner who depends on his tractor for a living.

The John Deere 650 and 750 Compact Utility Tractors.

The tractors that give you big mowing capacity in a small size. And then go on to give you more.



**Nothing Runs Like a Deere®**

For nearest dealer or for free folder, call 800-447-9126 toll free (Illinois 800-322-6796) or write John Deere, Dept. 67, Moline, IL 61265.



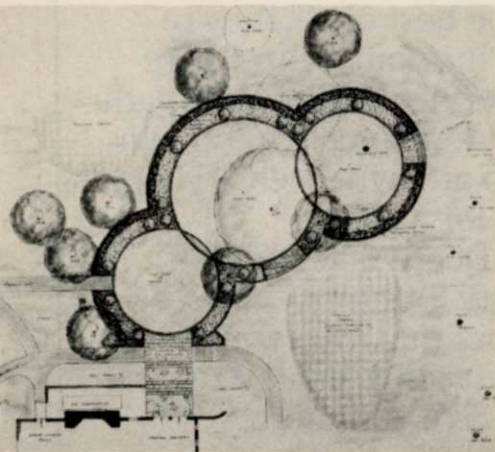
Circle No. 110 on Reader Inquiry Card

\*Maximum PTO hp measured at 2600 engine rpm for the 650, 2400 engine rpm for the 750, factory observed.



# GARDENS FOR GOLF COURSES: SUPERINTENDENTS MUST MANAGE MORE THAN ACRES OF TURF

by R.P. KORBOBO and JEANNE A. FRENCH



Plan for Winner's Circle garden with room for expansion. (Essex County Country Club, W. Orange, NJ)

The golf course superintendent is most frequently thought of as the turf or "greens" keeper of a golf course. Too often forgotten are his additional responsibilities of clubhouse and maintenance building areas, and the thousands of non-turf plants under his care.

We are now observing that country clubs are adding landscaped gardens for golf and non-golf functions throughout the course. These gardens serve both aesthetic purposes.

## Garden for large groups

The winner's circle design (on left) is an expandable/retractable garden which can adjust to the size of a particular group. The circle

closest to the clubhouse could easily hold 75 to 100 stand ups or about 30 to 40 sit downs. If the stand ups approached 200 in number, then the large circle could be utilized. For larger groups, all three circles would become involved.

The low hedge around the outside of the circles would be a suggested enclosure, as well as a subtle barrier from the golf course traffic in that area. The pathway into the far circle would be used by golfers coming off the 18th green during a tournament. The score board would be nearby and the tournament champions would be feted in the center "Winner's Circle".

During the days when no large function is planned, the area overlooking the 18th green has chairs and tables for the members who want to sit outside and watch the activity on the course.

When the garden is free of all people, then its strong circular design and flowers in fall color will be a sight to behold from the elevated cocktail gallery. Walking through or viewing any well designed garden definitely lifts our spirits.

## Gardens for viewing from clubhouse

Some garden areas are designed for viewing only, mainly from the



The first impression of the course is made at the first tee. This garden at Forsgate Country Club, Jamesburg, NJ, has a formal look and is known as the Tee Garden.

R. P. Korbobo and Jeanne French are landscape architects serving mid-Atlantic golf courses. Korbobo has served Rutgers as extension specialist in landscape design since 1946. French has practiced golf landscape architecture since 1963 and was the first woman graduate of the Rutgers University program.

*Continues on page 44*



**This is quality  
Sulphur Coated Urea  
from C-I-L.  
It is the prime  
ingredient in  
outstanding blended  
fertilizers from  
major manufacturers  
from coast-to-coast.**



You can recognize it  
by how it looks  
and how it grows grass.

**Try it  
and let your grass be the judge.**

Quality S.C.U. (32-0-0) from C-I-L  
is a proven source of  
controlled release nitrogen formulated  
to feed turf the way it should  
be fed . . . daily.

*For Information, Sales and Service*  
*Contact:* P. Buckley  
C-I-L Inc., P.O. Box 5201  
London, Ontario  
N6A 4L6  
Telephone 519-672-9220



**Professional Turf Products**





**Low maintenance** natural areas, left, serve as garden features at New Canaan Country Club. A **natural** setting for the halfway house, right, at Mountain Ridge Country Club, is visible from a number of holes.

dining rooms. Enjoying a meal while viewing an elegant garden scene certainly has a calming effect and adds to the atmosphere of the dining room. Also a beautiful view encourages members to "come again".

One club wanted to do something for its 50th anniversary celebration. There was an area between the 1st tee, the practice green, and the clubhouse that needed landscape attention. After much transplanting and some discarding of unsuitable plants, the entire area was transformed into an attractive curvilinear flower garden. It was mainly to be viewed from the dining room. During their 50th year celebration (1972), all flowers and some foliage plants were as close to gold as we could get them, which meant mostly yellows and oranges. It is now referred to as the "50 year garden" and other colors are used. It is a tremendous addition to that particular clubhouse and everyone delights in its colorful display.

Since the dinner hours often occur after dark, the same garden can be transformed into a beautiful night scene with the addition of tasteful night lighting. The lighting effects can be altered throughout the year to highlight the changes of seasons. As different plants come into bloom or when foliage changes color, they can be uplighted with movable spotlights. This kind of garden can be considered as part of the decoration of the dining room, and should have eye appeal all

months of the year.

### Entrance gardens

The first impression of an entrance to any building, particularly a country club, is tremendously helped by a colorful, well maintained area of flowers, which provides an unspoken welcome to the visitor.

In one particular entrance plan, the element of flower color is provided for three seasons of the year. The spring display is a combination of Magnolia blossoms and bulbs on either side of the entrance walk. The summer bloom is concentrated in the two planting beds with massed red Geraniums which continue to bloom through the summer and into the fall. If late fall color is desired, Chrysanthemums are used.

When freezing weather comes, an attractive mulch is used to cover the soil, and the dwarf Boxwood edging provides a neat effect through the winter.

### The 1st tee

There are areas directly involved with the golf course which sometimes lend themselves to the development of a garden. One of these areas can occur at the 1st tee. In this case, the primary object is to set the mood of the club, and a necessary prerequisite is available space for this project. Page 42 shows a reclaimed area which has now been dubbed the "Tee Garden". This was, for many years, an unattractive, unused championship 1st tee. It was nothing more than an un-

even mound of earth, flattened at the top, with mud around the lower edges where it met with an uneven edge of blacktop. Now it can be described as one of the most attractive golf tees in the area. No one who visits this golf course will forget the picture of the first tee if they are there during the peak of the flowering season. Even in the dormant season, it has enough architecture and evergreen plants built into the design so that it does not lose its basic character, but remains an attractive area year-round.

Very often we find on certain golf courses, especially those on hilly terrain, some elevated tees from a foot to sometimes 6 or 7 feet above the surrounding area. This gives a great opportunity for retaining walls, either made of stone or landscape timbers, to get rid of the problem of trying to maintain turf on an extremely steep slope. Therefore, when these retaining walls are designed you can also design into them the so-called planters. The distinct advantage of this is that by having an area of flowers between the edge of the tee and the retaining wall, there would be very little danger of someone absent-mindedly taking a step or two backwards toward the edge and falling off. Undoubtedly, this has happened in some places since some tees that we have seen do present this hazard. So, raised tees would be another place to add color and interest through use of flowers, shrubs, hedges, etc. These would not precisely fall in the category of

*Continues on page 48*



# **GIVE MALLINCKRODT YOUR FUNGUS, WEEDS AND ROT,**

***and now,  
even your bugs!***

Look out, bugs! Here comes  
Mallinckrodt...with DYMET™, a versatile new  
insecticide. Stop in and let us tell you all about it—  
plus a great new fungicide, too!

**BOOTH 1053**

Circle No. 124 on Reader Inquiry Card

**FROM THE GREEN GROUP AT**

**Mallinckrodt**

MALLINCKRODT, INC.  
ST. LOUIS  
JERSEY CITY  
LOS ANGELES





Simple, dependable, foolproof.

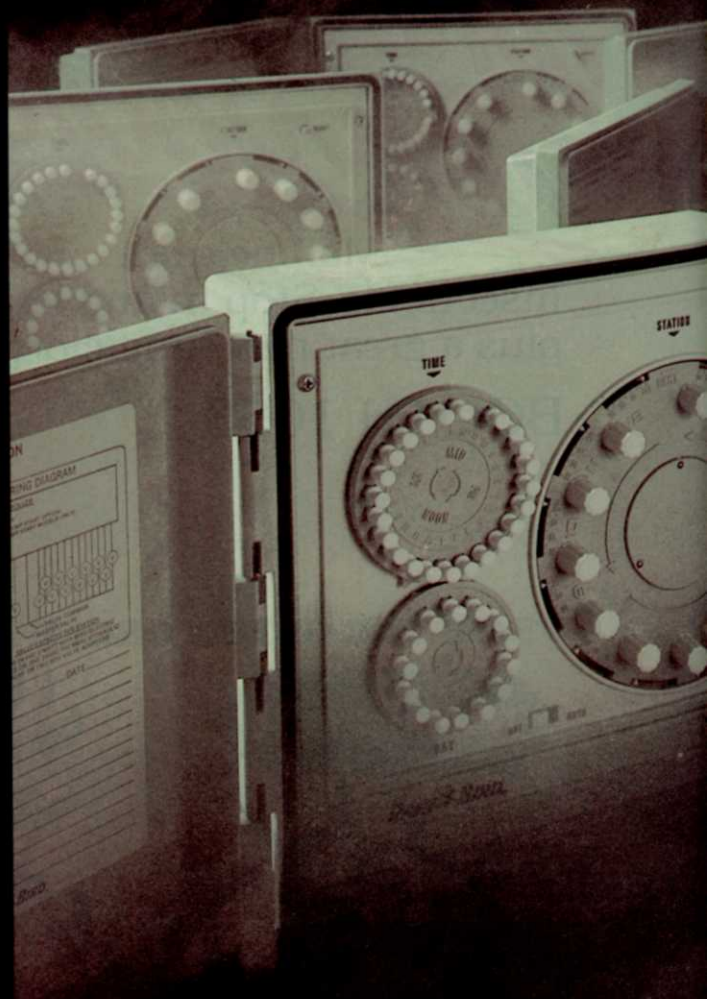
✈️ Based on two of the industry's most reliable controllers ever — the Rain Bird RC-1230 and RC-1260 — our MC-3S system combines flexibility and economy like never before. The best of both worlds.

✈️ It starts with three Turf Irrigation Start Clocks, with seven-day calendars and ½ hour starts. Add an RC-1260 type controller module that provides syringe times of 0 to 10 minutes. Next, up to 75 — that's right, 75 satellites, each one capable of handling up to 12 separate stations from greens to fairways to roughs.

✈️ The MC-3S system doesn't stop there, though. You'll also find plenty of Rain Bird extras to help make your job just a little bit easier. Extras like a digital clock that shows time of day. A flashing, loss-of-power display. Satellite pump starts. Manual override switches for each of three satellite groups. Pedestal mount flexibility.

✈️ It's a satellite controller system that gets the job done fast and effectively.

## INTRODUCING THE MC-3S SATELLITE CONTROLLER SYSTEM.



**RAIN BIRD®**

Rain Bird Sales, Inc.  
Turf Division  
145 N. Grand Avenue, Glendora, CA 91740

RAIN BIRD

AUTOMATIC MASTER CONTROLLER

<p>CANCEL</p> <p>OFF SYSTEM ON</p> <p>IRRIGATE A</p>	<p>CANCEL</p> <p>OFF SYSTEM ON</p> <p>IRRIGATE B</p>	<p>CANCEL</p> <p>OFF SYSTEM ON</p> <p>IRRIGATE C</p>
<p>TIME NOW</p>	<p>TIME NOW</p>	<p>TIME NOW</p>
<p>SYRINGE A</p> <p>OFF ON</p>	<p>SYRINGE B</p> <p>OFF ON</p>	<p>SYRINGE C</p> <p>OFF ON</p>

MICROLINA

OFF ON

10

MC/3S

TIME

START

10



a garden, as such, but it could be called a "garden spot".

### The halfway house

Since the halfway house is a place where the golfer stops and spends a few minutes eating and resting, an attractive and well maintained area is most appreciated by members. A small area of flowers to add color and trees for shade are the requisites for a good halfway house landscape.

Also, the halfway house is usually visible from several or more holes on the course. While its main purpose is to be functional, it should also manage to blend in with the natural beauty of the golf course and not be an eyesore.

### In the rough

Occasionally, we see beautiful, natural, wild flower displays in the rough often along a stream. (Page 44) When this occurs, we consider it a bonus from nature, and encourage it with judicious additions of indigenous wild flowers.

In most parts of the country where ericaceous plants thrive (rhododendrons, azaleas, laurel, etc.) we frequently find areas in the deep rough where the golfers can see into it but where the ball would never come into play. Such areas would be ideal locations for what we refer to as ericaceous plantings. This would be large numbers of rhododendrons, laurel, azaleas, blueberries, dogwoods, and other acid-loving plants that can manage to flourish and bloom in the shade of trees. Frequently, such sites are on hilly, or gravelly soil. In this case, we recommend they plant the smallest possible plants, even down to as small as 3 to 4 inches in height. We suggest that they plant two to three times as many plants as are really needed. Very often this type of planting is far from the source of water so many will die of drought. Others will be killed by competition of weed and tree roots. Therefore, those that survive will appear to be native plants placed there by Mother Nature herself.

Everyone is struck by the beauty of the Augusta National Golf Course, scene of the Master's tournament. This is primarily because it was cut out of an ornamental plant nursery at one time and the dogwoods and the ericaceous plants left behind put on fantastic displays of beauty at the time of that tournament. There is no reason in this world why more golf courses cannot have similar and even more colorful displays. We are not talking about our entire golf course being covered with flowering plants. We are, however, visualizing certain key areas being designed to specifically give dramatic displays at various areas around the course. Such plantings cannot be considered as a functional garden to be used for parties—but they certainly can be considered as planned for beauty.

So may we suggest that when considering garden areas, golf courses as well as the Club House grounds be given more attention than they have in the past. **WTT**



## KEES 32"

Self-Propelled  
**Heavy Duty  
Commercial Mower**  
Better handling and maneuverability for large residential and commercial use. The choice of the professional.

MODEL  
321100

### Check these outstanding Kees features:

- Your choice of a powerful 11 h.p. Briggs and Stratton or Honda synchro-balanced engine.
- Fingertip lever controls for clutch, brake and drive wheels.
- Sleek deck design for close quarter mowing.
- Baffled design for clean and safe grass discharge.
- 9 quart fuel tank. *Optional Features:* Extra large grass catcher. Riding sulky.



For more information, write: P. O. Box 980  
or phone 402-223-2391  
Since 1874

**F. D. KEES MFG. CO.** Beatrice, Nebr. 68310



\*Patented

### MOTORLESS LIQUID CHEMICAL SPREADER

The WS-480 Grounds Wheelie is the best designed, highest quality, most accurate and trouble-free liquid applicator manufactured. It features a motorless, ground-driven pumping system which does not require gasoline, batteries, cords or water hoses.

The Grounds Wheelie is used to apply liquid fertilizers, herbicides, fungicides, insecticides and growth regulators. The twin wheel pumps spray a fan of solution 6' wide at 1000 sq. ft. per gallon. Coverage is relatively unchanged by the speed at which the sprayer is pushed. The faster it is pushed, the faster it pumps.

The pumping system and the (6) gallon container are made of corrosive resistant materials. The spray comes from (2) nozzles in the form of tiny droplets providing a steady, uniform application which greatly reduces costly chemical drifting. The frame is fabricated of heavy gauge steel with fold-up booms. The shut-off controls are located on the handle grips. (Other models and sizes available.)

**WHEEL SPRAY CORP.**

Box 97, Delafield, WI 53018 — PH: (414) 646-8640

Circle No. 151 on Reader Inquiry Card

Circle No. 120 on Reader Inquiry Card



# WE SAVE OUR DIESEL FROM DROWNING.

## WITH A BUILT-IN LIFE PRESERVER.

Toro stops at nothing to give you the kind of riding rotary mower you want most.

A mower that keeps you cutting. Gets the job done.

The latest example: our new Diesel powered Groundsmaster 72®. It offers you maximum productivity and reduced operating costs as well as remarkably low levels of noise and vibration.



injection pump. And soak you with costly repairs and downtime.

So we built in a Roosa-Master water separator that removes more than 95% of the water. You simply unscrew a plug and drain it out.

And we didn't stop there.

We added other features that keep you cutting. Like a fuel primer pump, start assist glow plugs and a maintenance free battery.

Plus, other advantages you get with every Groundsmaster 72® gas or Diesel. Such as hydrostatic drive and a Donaldson air cleaner.

Call your Toro distributor. He'll tell you all about Toro riding rotary mowers. Including the newest: our Groundsmaster 72® with Diesel engine.

But we didn't stop there.

We knew that water in fuel can literally drown a Diesel. Destroy its injectors and



**THE NEW TORO DIESEL**  
It's our Groundsmaster 72®  
now available with Diesel engine.

**TORO**

**THE PROFESSIONALS  
THAT KEEP YOU CUTTING.**

"Toro" is an exclusive trademark of The Toro Company.  
8111 Lyndale Ave. So., Minneapolis, Minnesota 55420.

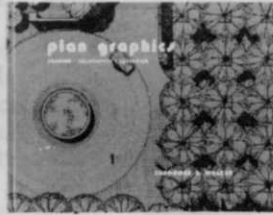
Circle No. 144 on Reader Inquiry Card



# Bookstore

**010, 015 - ADVANCES IN TURFGRASS PATHOLOGY** by Dr. B. G. Joyner & Dr. P. Larsen  
Leading U.S. turf pathologists report on turfgrass diseases, pythium blight, snow molds, fairy rings, leaf spot of Kentucky Bluegrass in Minnesota, initial and field fungicide screening, turfgrass disease resistance, etc. Contains new ideas on how to combat turfgrass problems. **\$27.95 hardcover, \$18.95 paperback**

**110, 120 - TURF MANAGER'S HANDBOOK** by Drs. William Daniel and Ray Freeborg  
This specially designed manual by leading turf specialists is a comprehensive, organized approach to turfgrass science and care. An easy, on-the-job reference for planning, purchasing, hiring, construction and plant selection. **\$18.95 hardcover, \$14.95 paperback**



**630 - TURFGRASS: SCIENCE & CULTURE** by James Beard  
Comprehensive basic text and reference source used in many leading university turf programs. Includes findings of current research compiled from more than 12,000 sources. **\$23.95**

**375 - SITE DESIGN AND CONSTRUCTION DETAILING** by Theodore D. Walker  
An introduction to the subject of site design and construction detailing. Focus is on design implementation. Discusses the nature of construction drawings. Presents the characteristics, origin and nature of construction materials. **\$24.00**

**365 - PLAN GRAPHICS** by Theodore D. Walker  
Focuses on plans, elevations, sections and lettering. Provides many different examples to be used as guidelines in personal skill experimentation. Includes graphic techniques for site analysis and design concepts. **\$21.00**



**355 - PERSPECTIVE SKETCHES** by Theodore D. Walker  
A reference source of ideas, media use, styles and techniques. Grouped by subject matter. Illustrates technique for vegetation, vehicles, play equipment and recreation facilities, people, animals, etc. **\$19.50**

**345 - COST DATA FOR LANDSCAPE CONSTRUCTION 1981** - Kathleen W. Kerr, Editor  
An updated unit cost data reference for designers, and cost estimators. Developed to fill the tremendous need for detailed landscape construction cost data. Laid out in easy-to-use CSI format. Annual. **\$24.95**



**370 - LANDSCAPE OPERATIONS: MANAGEMENT, METHODS & MATERIALS** by Leroy Hannebaum  
An in-depth examination that combines technical training in landscape science with methods of accounting, business management, marketing and sales. Discusses effective methods for performing lawn installations, landscape planting and maintenance. Step-by-step accounting calculations are explained in simple terms. **\$17.95**

**340 - CONSTRUCTION DESIGN FOR LANDSCAPE ARCHITECTS** by Albe E. Munson  
Design specifications for layout, grading, drainage, structures and irrigation. Also explains mathematics of drafting. **\$24.50**

**380 - MANUAL OF WOODY LANDSCAPE PLANTS** by Michael Dirr  
A teaching text and reference on ornamental deciduous trees, shrubs, ground cover and vines. Provides identification characteristics with ornamental and cultural features all in one volume. **\$19.00**



**390,395 - PHOTOGRAPHIC MANUAL OF WOODY LANDSCAPE PLANTS** by Michael Dirr  
Reference encompassing photographs of plant habit and ornamental characteristics. Brief descriptions of plants with major thrust on black-and-white photos selected to accurately represent growth habit and other ornamental characteristics such as bark, fruit and flower. **\$22.00 hardcover, \$14.60 paperback**

**360 - HOME LANDSCAPE** by Garret Eckbo  
Provides designs, examples and current innovations and refinements to older traditional designs. Covers all aspects of residential landscape planning. **\$18.95**

**780 - PARK AND RECREATION MAINTENANCE** by Sternoff & Warren  
Preventative maintenance through planning, personnel considerations, equipment maintenance and an examination of public safety, liability and vandalism are covered. Chapters on general outdoor maintenance focusing on outdoor lighting, solid waste sanitation and maintenance of roads, parking lots and trails. **\$18.95**



Recreation  
Planning  
and Design



Seymour M. Gold



**790 - RECREATION PLANNING AND DESIGN** by Seymour M. Gold  
A comprehensive look at recreation needs for parks and how they can design the park facility for the community. Book's content can help justify construction and maintenance needs. **\$27.50**

**400 - WESTERN HOME LANDSCAPING** by Ken Smith, LA  
Illustrations and description of western landscape plants and structures for your design idea file. Covers foolproof plants, irrigation, patios and decks, walls, pools, and shelters. **\$7.95**