

# SWITCH HITTER

Shade or sun, Glade's a beauty that grows both ways. When trees and structures throw shadows on your plans, it's time to call in Glade to swing with the hot times and up to 60% shade. Excellent dark green color, fine texture and better disease

resistance make Glade a big hit with crowds in recreation areas, or simply covering home and commercial grounds. Switch to Glade for consistently high scores in sun or shade. At your local wholesale seed distributor.

**Glade**  
**Glade** KENTUCKY  
BLUEGRASS  
U.S. Plant Patent 3151  
License in Canada No. 2133

Circle No. 123 on Reader Inquiry Card



Another fine, quality-controlled product of Jacklin Seed Company





**Daconil 2787.<sup>®</sup>**  
**It's the**  
**groundwork for**  
**a more**  
**playable**  
**course.**





For more and more superintendents that's the case. Because they know effective disease control is the best way to achieve a better looking, more playable course. And that's why Daconil 2787 fungicide is the basis of their fungicide spray program.

**Number one on tees and greens.**

Daconil 2787 is the product of choice on America's tees and greens.

The reason... Daconil 2787 works. It consistently delivers unsurpassed control of 9 turf diseases including dollar spot (and benomyl-resistant dollar spot), *Helminthosporium* (leafspot and melting out), red thread and large brown patch.

Fact is, Daconil 2787 is the broadest spectrum contact fungicide on the market today.

What's more, in 15 years of continuous use, there has never been a documented case of resistance. Even on courses where it was applied at weekly intervals for many years.

**Outstanding on fairways.**

Make Daconil 2787 the groundwork of your program for fairways too. It will deliver the same unequalled disease control it does on tees and greens.

And you need first rate protection on fairways. Because diseases are mobile and can easily spread from fairways to tees and greens. Especially dollar spot, brown patch and leafspot.

You can control these three major diseases on a wide variety of grasses all season long with Daconil 2787 without having to worry about burning fairway turf even in the hottest weather.

**Easy and economical to use.**

The flowable formulation of Daconil 2787 allows for fast, easy handling because it flows readily and disperses quickly. So there's no clogging of spray equipment.

And since Daconil 2787 has a built-in surfactant, you're assured of superior sticking power, extended coverage on the crown and sheath of grass blades and excellent fungicide retention even after heavy rains or watering.

All of which adds up to proven residual control when used at recommended rates.

When you consider everything Daconil 2787 has to offer, it's no wonder more and more superintendents are making it the basis of their disease control program. On tees, greens, fairways and even ornamentals.

With a full and regular schedule of Daconil 2787, your turf will be healthier and more vigorous to better withstand traffic and play. And it makes for easier weed control too.

Groundwork like that adds up to a more playable course. And in your business, that's the name of the game.



**Diamond Shamrock**

**Agricultural Chemicals Division**  
Diamond Shamrock Corporation  
1100 Superior Avenue  
Cleveland, Ohio 44114

Always follow label directions carefully when using turf chemicals.



developed to help cradle and protect the tank. Models available include 7- and 23-hp gasoline engines.

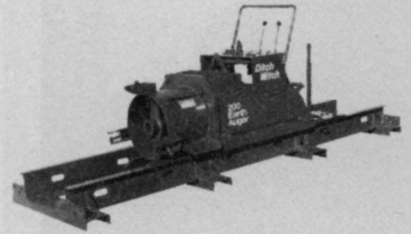
Circle No. 176 on Reader Inquiry Card

**Hesston Corporation** announces the model T50 Rotary Tiller with a twin coupler hitch mounting and a center drive gear box. The model provides a 51" tilling width and can be pulled behind or offset tractors of 15 to 25 horsepower.

Circle No. 177 on Reader Inquiry Card

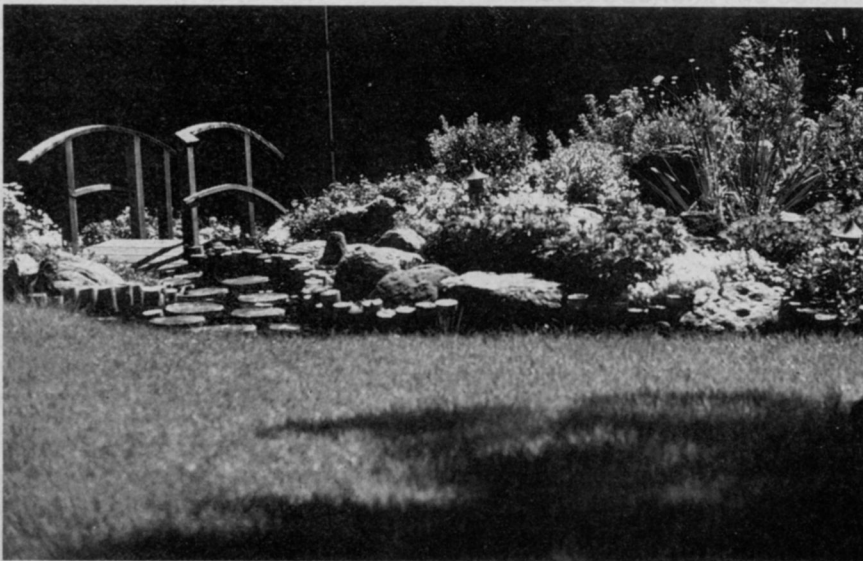


**Ditch Witch** is introducing the model 200 Earth Auger horizontal boring unit to free bore or push casing of lengths of



250 feet and diameters of 6- to 20-inches. The drive system is powered by a 30PF power unit.

Circle No. 178 on Reader Inquiry Card



# MILORGANITE

**A DISTINCTIVE PRODUCT...** Milorganite is a NATURAL ALL-ORGANIC fertilizer. It is easy to apply, without danger of burning, and watering-in is never necessary. Milorganite never deteriorates or hardens during storage. Milorganite contains natural organic nitrogen, phosphorus, iron and all secondary and minor elements needed by grass. All are released gradually and surely to insure uniform color and growth.

**THE IDEAL PARK, CEMETERY AND HOME LAWN FOOD...** It is easy to have a luxuriant turf. Follow the method used by leading golf courses everywhere. Grass is a VORACIOUS FEEDER and ample, slowly-released plant food encourages existing grass to spread and produce dense turf. Instead of reseeding constantly, the best golf courses

**The natural organic fertilizer...  
Use in any season...  
Ideal for Lawns, Parks,  
Cemeteries and Athletic Fields**

FERTILIZE REGULARLY EACH YEAR  
— with MILORGANITE.

Milorganite cannot burn the turf since it is not salty and *Milorganized* turf requires less water than other fertilizers.

**MIX GRASS SEED WITH MILORGANITE**... The best way to insure even distribution of seed on new turf areas and when reseeding a poor lawn. Milorganite gets the young grass off to a fast start and hastens establishment of a dense, uniform grass cover. Milorganite is also ideal for trees, shrubs, and flowers.

**MILORGANITE'S TRUE VALUE PROVED BY ANALYSIS AND RESPONSE!** Milorganite is the greatest bargain in fertilizer today. It is loaded with dollar value materials completely lacking in other fertilizers sold for turf and ornamentals.

*Milorganite does not burn and is almost impossible to over-apply.*

**DO NOT USE ON EDIBLE CROPS**

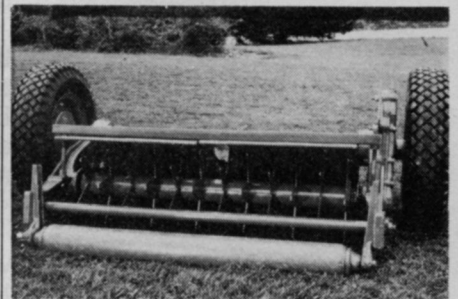
**MILWAUKEE METROPOLITAN  
SEWERAGE DISTRICT**

735 N. WATER ST., MILWAUKEE, WI 53202

Circle No. 130 on Reader Inquiry Card



**Jacobsen** now has a hydraulically driven mower that cuts turf vertically to control and remove thatch, reduce compaction and aerate the soil. The



mower interchanges with the company's hydraulic mowing tractors such as the HF-15.

Circle No. 179 on Reader Inquiry Card

**Vandermolen Corp.** has introduced its new WINDMILL 8-11 Wheeled Blower, powered by a 2 cycle Kawasaki



engine with electronic ignition. The 41 lb. blower generates a high pressure air blast of 225 mph. Its lightweight and pneumatic rubber tires are designed for easy maneuverability on steep slopes and uneven surfaces.

Circle No. 180 on Reader Inquiry Card

# You just can't buy a better rotary mower.



It's been proven time and again, day after day, acre after acre. You just can't buy a better cutting rotary mower. For a very convincing demonstration, call your Jacobsen Distributor.

**JACOBSEN**  
**TEXTRON**

Jacobsen Division of Textron Inc.

**Jacobsen: You just can't buy any better.**





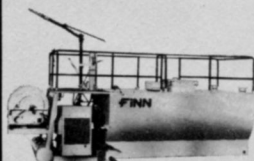
# High Performance Tanks & Blowers

Finn Tanks for Hydroseeding, Soil Stabilization, Dust Control, Fire Fighting, Street Flushing, Chemical Spraying, and Equipment Cleaning. Versatility, high performance, economical operation, and low maintenance are major benefits of all Finn Tanks. All models are capable of mixing, suspending, and spraying heavier concentrations of dry solids, powders, liquids, or fiber mulches per gallon than any other machines of their kind on the market.



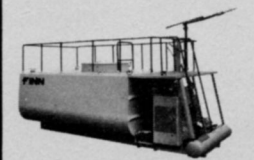
MODEL T80

**T80 (800 gallons)** — Built to fit the needs of small and large contractors as well as municipal projects. The low-profile T80 with its paddle agitation controlled by a hydraulic motor can run at speeds in excess of 100 RPM's and will handle all types of materials with a discharge distance up to 90 feet. The T80 comes with trailer or skid-mounting.



MODEL T150

**T150 (1500 gallons)** — Comes skid-mounted and can be installed on a single-axle truck. The T150 is equipped with a diesel engine, hydraulically-controlled paddle agitation, and will deliver discharge distances up to 200 feet. A wide variety of spray nozzles makes the T150 a truly versatile unit.



MODEL T250 & T300

**T250 (2500 gallons) and T300 (3000 gallons)** — Ruggedly built for the big jobs. Dual hydraulically-powered paddle agitation with spray distances up to 200 feet and an additional 400 feet hose and reel attachment is available. Either truck frame or bed mounting, the low-profile design keeps overall height to a minimum.

**B250** — An all new mulch spreader with a power feed chute and capabilities of handling up to 25 tons of material per hour with a range of up to 90 feet. This unit saves the cost of one laborer to feed the blower making it a real profit producer for high production.

**B50 (not shown)** — Finn's small mulch spreader that efficiently handles 4 to 5 tons per hour making it a favorite where large quantities and long distance spraying aren't required. This low-cost machine can be converted into a debris collector and has several other optional attachments available.



MODEL B250

**Twin-Jet Blower** — For your next land clearing project, you'll want to investigate Finn's Twin-Jet Blower for controlled burning of non-marketable timber and landfill debris from construction activities. In producing 2000° temperatures, this machine stimulates burning rates up to *ten times faster* than conventional burning methods. Fly Ash pollutants are eliminated. Result: *clean air!* And this difficult job is speeded up. Result: *greater profits!*

Call or write for additional information on our *complete* product line and your local dealer's name and location.



TWIN-JET BLOWER

# FINN CORPORATION

P.O. BOX 8068 • 2525 DUCK CREEK RD.  
CINCINNATI, OHIO 45208 U.S.A.  
PLANTS: CINCINNATI, OHIO - KNOXVILLE, TENNESSEE  
PHONE (513) 871-2529

four men to do.

The introduction of the Sand Pro further reduced the labor needed on golf courses and other large turf areas. In the mid seventies, Toro's Turf Pro 84, a hydraulically driven reel mower equipped with grass catchers, was introduced for the specialized tasks of maintaining tees, approaches and collars, along with other formal and semi-formal landscaped areas.

During the '70's, Toro engineers strived to design the ultimate in large tractor operated fairway mowing equipment. And in 1978, the company unveiled its largest, most highly engineered piece of turf equipment—the HTM-175. Using hydraulics in a design that was completely new to the Toro product line, the HTM-175 combined the attributes of a premier mowing machine with the ultimate in labor-saving equipment.

Also in the 1970's, Toro developed the first in its line of highly mobile, out-front rotaries, the Groundsmaster-72. Powered by a water-cooled engine, the GM-72 proved to be a highly maneuverable, rapid transport, piece of equipment that worked particularly well on golf course roughs and other similar grounds.

No review of Toro's involvement in the turf management industry for the past 20 years would be complete without reference to the company's contributions in automatic turf irrigation. The company entered the commercial and golf course irrigation business in 1962 with the acquisition of Riverside, CA-based Moist O'Matic. Moist O'Matic was headed by Ed Hunter, an inventor who is today credited with first successfully using high grade plastics in irrigation equipment. With the earliest installations of Hunter's (and Toro's) plastic sprinkler heads, it became apparent that selected plastics offered a number of advantages over traditional brass heads. Plastic heads were not subject to rust or corrosion and, in Toro's case, because of their gear-driven design, they provided a more uniform, more precise water cover thereby conserving water. In addition, they were

Continues on page 80

# WE REACH THE PEOPLE YOU NEED TO REACH!

Place a recruitment ad in any of these HARCOURT BRACE JOVANOVICH PUBLICATIONS - and you know your ad dollar is wisely spent.

HBJ PUBLICATIONS does a better job of reaching those who count (*your potential employees*) than any other business publisher.

Magazine	Circulation	Magazine	Circulation
Body Fashions/Intimate Apparel	8,984	LP/Gas	13,664
Dental Laboratory Review	17,265	Lawn Care Industry	12,178
Dental Management	101,645	Neurology	12,600
Drug & Cosmetic Industry	7,426	Paper Sales	12,061
Electronic Technician/Dealer	43,041	Pest Control	14,624
Fast Service	50,378	Professional Remodeling	36,076
Flooring	13,032	Quick Frozen Foods	20,721
Food Management	49,723	Rent All	11,136
Hearing Instruments	17,002	Roofing/Siding/Insulation	18,459
Home & Auto	22,424	Snack Food	9,196
Hotel & Motel Management	36,360	Toys Hobbies & Crafts	14,196
Housewares	12,678	Weeds Trees & Turf	42,375
Industrial Education	45,096		

Don't forget that classified advertising works just as effectively in locating employees as it does if you are looking for a position, have a line, machinery or a business to sell, are seeking representatives or wish to buy a specific item. Let it go to work for you!

## HBJ PUBLICATIONS - COUNT ON US TO REACH THOSE WHO COUNT!



**Harcourt Brace Jovanovich Publications**  
One East First Street  
Duluth, Minnesota 55802

Call Dawn Anderson at 218-727-8511



known clientele of Lofts/Maryland are the White House, Arlington National Cemetery, and the Robert F. Kennedy Stadium, home of the Washington Redskins.

A more recent venture of Lofts and Southern Turf Nurseries is Sunbelt Seeds, Inc. at Tucker, Ga., formed specifically to better serve the Southern recreational turf overseeding market. Overseeding is an expanding portion of the turf industry, extending the winter golf and recreational season throughout the South.

Today, the Bound Brook office serves as corporate headquarters, from which the second generation of the Lofts family, Peter and Jon, manage the far-flung operations of the company. Although large inventories of seed are maintained at strategic locations throughout the country, the New Jersey location alone includes 100,000 sq. ft. of storage space and blending facilities. A fleet of company owned trucks guarantees rapid delivery to customers. A unique delivery sys-

tem in this industry.

As a most fortuitous circumstance, Lofts Seed is located in the proximity of the world-famous New Jersey Agricultural Experiment Station at New Brunswick and works in close conjunction with Rutgers University. It is here that the most intensive search for new varieties is led by Dr. C. Reed Funk. According to John Morrissey, Lofts' Vice President with this company over 30 years, Dr. Funk "can almost develop varieties on demand".

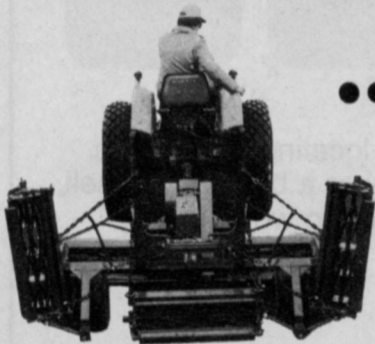
Special sod-mixing facilities are also located at Bound Brook. As an ardent supporter of the Interagency Certification procedure, all Lofts sod blends are packed under the direct supervision of the New Jersey Department of Agriculture's Division of Plant Industry. Lofts' proprietary varieties are carefully blended in separate, isolated areas to assure all seed is free from contamination.

Sod production is an expanding business, and the certification pro-

cess is a cooperative one, including the seed companies, the Extension Service and the Department of Agriculture. Lofts has been one of the pioneers in the efforts to improve the sod business.

At Lofts' Martinsville, New Jersey Research Facilities, Rich Hurley, Vice President and Director of Agronomy and Research oversees an extensive, continuous research program. As the only commercial research facilities in this part of the country, it is where experimental varieties are evaluated for performance. Over 2,000 test plots enable Lofts' agronomists to conduct in-depth test programs for color, disease resistance, density, uniformity, heat and drought tolerance, effects of fertilization and shade performance. Greenhouses and shadehouses permit testing under a wide variety of controlled conditions. Varieties passing stringent tests at the New Jersey location are then evaluated under university supervision for climatic variations

*Continues on page 80*



**Brouwer Hydraulic Lift mowers** let you raise mowers with a touch of a lever—saves time in tight corners and when transporting. (Also available with standard lift).

**The "all season" simple design,** low maintenance mower makes a perfect cut even in wet grass because of PTO Drive.

**For all grass maintenance,** the Brouwer 5 gang PTO mower is a good cut above the competition.

**BROUWER**

Brouwer Turf Equipment Limited,

Woodbine Ave., Keswick, Ontario, Canada L4P 3E9 Tel: (416) 476-4311

**...It also cuts time, costs and covers its tracks.**



Tractor Track Remover brushes up grass behind tractor wheels.



# Less is more.

**Hudson Porta-Pak™ Ultra-Low Volume Sprayers  
use less pesticide, need less time... to treat  
areas more completely and effectively!**

Perfected after years of development and field-testing worldwide, this Hudson compact ULV Sprayer offers advantages found in no other product of its type.



The sprayer quickly and completely applies optimum micron-size droplets of concentrated pesticides (as little as

1.6 oz. per acre!) over a range of 40 ft. (12.2 m) vertically and 50 ft. (15 m) horizontally. This large single-pass coverage provides real savings in pesticide and labor. And more important, the Hudson ULV Sprayer provides more effective insect abatement and plant disease control.

A better application method than foggers or mist-blowers, the sprayer disperses micron-size droplets in a high velocity air stream thus assuring better contact of flies, mosquitos and other flying insects as well as uniform coverage of crops, plants and trees. It is especially recom-

mended and efficient for control of pests in public areas such as parks and campgrounds. And, the Hudson ULV Sprayer is ideal for mosquito larviciding and adulticiding.

The Hudson Porta-Pak ULV

Sprayer offers significant user convenience and comfort, with a contoured backrest padded with foam and a large, comfortable discharge hose handle. The sprayer is extremely well suited for government and public insect and plant disease control projects of all types. And, as are all Hudson Professional Products, this sprayer is engineered and designed for long, trouble-free service.

For more information about our Porta-Pak ULV Sprayer, portable 3, 5 or 10-gpm Porta-Power® Spray Pumps, or power or hand compression sprayers, simply fill out and mail the coupon below. Find out today how the Hudson Porta-Pak Ultra-Low Volume Sprayer can do a more effective job and save pesticide and time in your applications.

**HUDSON**



**H. D. Hudson Manufacturing Company**  
Professional Products Division  
2500 North Church Street  
Rockford IL 61103

- Please send me complete information and specifications about the Hudson Porta-Pak™ Ultra-Low Volume Sprayer. And send me information about:  
 Porta-Power Spray Pumps    Power Sprayers    Compression Sprayers

Name \_\_\_\_\_ Title \_\_\_\_\_

Organization \_\_\_\_\_

Address \_\_\_\_\_

City \_\_\_\_\_ State \_\_\_\_\_ Zip \_\_\_\_\_

H. D. Hudson Manufacturing Company, Professional Products Division,  
2500 North Church Street, Rockford IL 61103

Circle No. 120 on Reader Inquiry Card



less expensive and easier to repair than brass heads.

Toro's superiority in irrigation equipment over other brands is now proven out by the sheer number of top golf courses throughout the United States and the world that use it. Today, Toro irrigates 62 of the top-ranked 100 U.S. courses.

The large expansion of golf courses was reduced dramatically during the late 1970's with the oil embargo and subsequently rising energy prices, according to Watson.

Since that time, the challenge of energy conservation has been on the minds of turf managers as well as equipment manufacturers, he said. Toro's diesel GM-72 and its new GM-62, in addition to its diesel power Parkmaster and HTM-175, are aimed at helping improve fuel efficiency. Toro irrigation systems, because of their flexibility, are also helping meet the energy challenge.

And, Toro has already begun studying what could emerge as the biggest challenge to date: water conservation. A fresh water shortage, which could be crucial to hundreds of turf managers, could result in dramatic changes in the way turf is managed. Toro, as it has in the past will continue listening to the needs of turf managers—and take their research and design cues from what they hear.

**WTT**



Selmer Loft (left) and Dr. C. Reed Funk, turfgrass breeder for the New Jersey Agriculture Research Station.

and sensitivities. Promising varieties are then subjected to yield evaluations. These trials, conducted at research facilities on the West Coast, are required to determine a variety's ability to produce seed in sufficient quantities to warrant commercial release.

As a result of extensive research programs the turf industry has realized tremendous growth, particularly in the introduction of improved, proprietary varieties. For instance, during the mid 60's, Manhattan was the household word when it came to ryegrasses. Since that time Lofts alone has introduced Yorktown, Yorktown II and Diplomat fine-leaved perennial ryegrasses. Soon two "new generation" perennial ryegrasses will be introduced—Palmer and Prelude.

In the area of tall fescues, only recently have the new fine-leaved varieties become available with the introduction of Rebel and Clemfine.

Lofts market can be broken into two distinct segments:

1. the retail market such as mass merchandisers, garden centers, hardware stores where they sell not only seed, but a complete line of turf care products to the homeowner.

2. the professional or trade market which includes the landscape architect, nurseryman, grounds maintenance person, automated lawn care specialist, sod producer and golf course superintendent.

Golf courses alone represent a large portion of Lofts business and the company principals boast of the use of Lofts varieties on many prestigious courses where major tournaments are played, such as Pinehurst Country Club, Augusta National, and two of Arnold Palmer's courses—Bay Hill in Florida and LaTrobe in Pennsylvania.

Despite the growth and change in the turf industry which has taken place over the last 20 years, Lofts continues to be one of the few remaining family-owned and operated enterprises. A visit to Lofts' Bound Brook location would find employees who have been with the company over 30 years. And, a customer can call and speak directly to either of the principals, Peter or Jon. In these complex days of multinationals, conglomerates, wholly-owned subsidiaries and the like, it is comforting to know that personal contact and pride in quality products are still alive and well at Lofts Seed.

**WTT**

**Second National  
Urban Forestry  
Conference  
Urban Forestry  
for Livable Cities:  
MAKING IT HAPPEN.**

October 10-14, 1982.

