

# Our new Two-Year Warranty says a lot about our IC4 Controller.

We wouldn't offer a new Two-Year Full Over-the-Counter Exchange Warranty if we weren't totally confident about our IC4 four-station controller.

It's just as reliable as it is precise, thanks to a new silicon chip built into a new circuit board.

The IC4 is also easy to program. Its twelve key pad is so simple to understand, it virtually explains itself. (In fact, many

homeowners don't even need the instruction sheet.)

Installation is a snap—just hang the IC4 up and attach the wires to its built-in terminal strips.

You see, our Concept of Irrigation means building a controller that's going to give you peace of mind.

And just to make sure, we give you a little piece of paper along with it.

Our new warranty.

We've re-invented irrigation, from the ground up.



Irrigation Division



## The Toro 2-Year Full Warranty for the IC-4 Controller.

The Toro Company warrants, to the owner, each IC-4 Solid State Controller with a Two-Year Full Over-The-Counter Exchange Warranty against defects in material and workmanship for two years from the date of original purchase by the owner.

During such warranty period, Toro will replace any IC-4 Controller found to be defective.

This warranty extends only to the TORO IC-4 Solid State Controller. Toro is not liable for failure of products not manufactured by it even though such products may be sold or used in conjunction with Toro products.

Return the defective product to your local Toro distributor, who may be listed in your telephone directory Yellow Pages under "Sprinkler Systems" or "Irrigation Supplies," or contact Customer Services Department at The Toro Company, P.O. Box 489, Riverside, California, 92502, phone (714) 688-9252, for the location of your nearest Toro distributor. Toro's liability is limited solely to the

replacement of the defective IC-4 Controller. There are no other express warranties.

This warranty does not apply where equipment is used or, installation performed, in any manner contrary to Toro's specifications and instructions, nor where equipment is altered or modified.

Toro is not liable for indirect, incidental or consequential damages in connection with the use of equipment, including but not limited to vegetation loss, the cost of substitute equipment or services required during periods of malfunction or resulting non-use, property damage or personal injury resulting from installer's negligence.

Some states do not allow the exclusion or limitation of incidental or consequential damages, so the above limitation or exclusion may not apply to you. This warranty gives you specific legal rights and you may have other rights which vary from state to state.



Irrigation Division

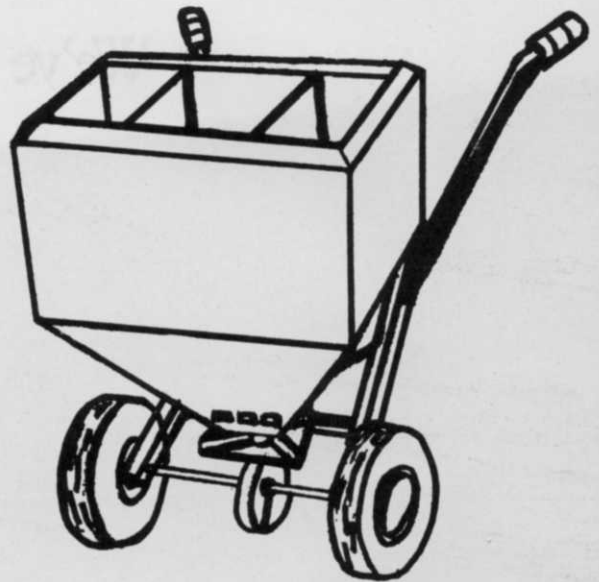
# **\$50 COMBINE CONVERSION DEVICE\* \$50**

**CONVERT YOUR BROADCAST SPREADER TO A COMBINE CAPABLE OF APPLYING 3 DIFFERENT GRANULAR MATERIALS AT ONE TIME.**

1. NO MORE HAND MIXING MATERIALS
2. NO MORE USING EXPENSIVE PRE-MIXES
3. NO MORE \$15,000 OR MORE SPRAY TRUCKS
4. NO MORE EXPENSIVE COMBINES
5. NO MORE HUGE EQUIPMENT EXPENSES TO SERVICE MORE CUSTOMERS
6. NO MORE 2 OR 3 TIMES AROUND THE SAME AREA GETTING DIZZY

**HERE IS THE ANSWER YOU HAVE BEEN WAITING FOR, 1 TIME AROUND DOES IT.**

Norman Lynd, owner of **Green Thumb Lawn Service**, located in Willow Grove, PA., has invented and is now manufacturing this conversion device\* that will change a broadcast spreader into a combine, without spending thousands of dollars.



- A. Installation takes approximately one hour and you don't have to be a mechanic.
- B. Once installed, it can be removed in less than one minute for cleaning and put back together in one minute.
- C. Installation instructions and directions are included.
- D. The unit is made with rugged **stainless steel** and **aluminum**. (No rusting)
- E. All nuts and bolts for assembly are stainless steel.
- F. Because of the simplicity and ruggedness of this unit, it should never need replacement.
- G. Three adjustable metering slides for calibration are the only moving parts.
- H. A common ruler is used for calibration settings
- I. Please allow **three weeks for delivery**.
- J. At this time, insert devices are available for **cyclone brand spreaders model #99-100 and 100B** only. If you want them for other types of spreaders, please send us MANUFACTURERS NAME, MODEL # of spreader and YOUR ORDER. Please allow **6 WEEKS FOR DELIVERY**.
- K. These units are not available from any other source at this time.

- L. Payment in full must accompany all orders before shipment is made.
- M. We will ship all orders via UPS in U.S.A. unless otherwise specified.
- N. Total price **\$50.00** per unit plus **\$5.00** per unit for shipping and handling.

## **GREEN THUMB**

2450 OLD WELSH RD.  
WILLOW GROVE, PA 19090  
TELEPHONE 215-657-6200

Call Toll Free  
Anywhere in U.S.A. Except PA.

# **800-523-2530**

\*PATENT PENDING



# Stop polluting your lawn

## Learn turf care the natural way

More than 10,000 people have learned lawn care and grounds maintenance from Don Arenberg, one of the country's leading agronomists. Find out why by attending one of his three-day clinics.

The Arenberg **Nature's Touch** Clinic can help you make your property look better with fewer treatments, reduced chemical costs and less mowing, maintenance and watering.

This no-nonsense clinic is unlike any university seminar you ever attended. There is no complicated theory, no technical language. Just practical, every-day specifics that you can start using immediately to



**Don Arenberg**

improve your grounds or to make more money.

### LEARN ABOUT THESE TOPICS

Natural growth rhythm of plants.

Man's method of cultivating plants.

How soils work.

How nutrients build plants—and kill them.

How soil and plant stresses weaken plants.

Soil life support systems.

Methods of relieving soil stress, compaction and nutrient deficiency.

Natural methods of rebuilding soil productivity.

How to develop healthy, beautiful lawns.

Tree and shrub care.

Weed control and prevention.

Proper application techniques.

Answers to your own specific problems.

### USE THE NATURAL METHOD

Don Arenberg has spent a lifetime developing an approach to lawn care that avoids harsh chemicals that kill essential microbes and restrict the flow of air, water and nutrients into the soil.

His **Nature's Touch** approach results in a richer, lusher lawn that resists insects and diseases, withstands stresses and eliminates the need for power raking and aerifying. Eventually, you can even mow and water less, thanks to the increased health of the lawn.

### MEET A PIONEER

Don Arenberg is a nationally known and respected agronomist. He received his degree in agronomy from Purdue University and spent years in research labs learning how soil works and grass grows.

He has served as a consultant to many of the nation's largest companies in the area of turf grass and grounds management.

### NOTE THIS GUARANTEE

If you are not completely satisfied with your results after having followed the **Nature's Touch** recommendations learned at this clinic, Don will refund the clinic fee. That's right. A 100 percent satisfaction guarantee! Can anything be fairer than that?

### ACT TODAY

The clinic runs 8:30 - 5:30 daily, so get set for three big, fact-filled days. Fill out the coupon below, and return it along with your check or money order. Enrollment is limited, so don't delay.

### Consulting Agronomists

11150 West Addison 312/455-8600  
Franklin Park, IL 60131

# nature's touch

Tear off coupon and mail today with your remittance.

Keep information above for your calendar.

Yes, Don, I want to learn to improve my turf the natural way. Sign me up for your three-day **Nature's Touch** Clinic.

Please reserve \_\_\_\_\_ seats for me.

Name \_\_\_\_\_

Please print

Title or position \_\_\_\_\_

Organization \_\_\_\_\_

Address \_\_\_\_\_

City \_\_\_\_\_

State \_\_\_\_\_ Zip \_\_\_\_\_

Telephone \_\_\_\_\_

Use separate sheet for additional participants.

Check clinic you will attend:

- Feb. 3-5. For garden centers, lawn spraying services.
- Feb. 10-12. For golf courses.
- Feb. 17-19. For cemeteries, parks, athletic fields, hospitals, industrial grounds, sod farms, other commercial/institutional lawns.
- March 10-12. For garden centers, lawn spraying services.
- March 17-19. For cemeteries, parks, athletic fields, hospitals, industrial grounds, sod farms, other commercial/institutional lawns.

All sessions are 8:30 - 5:30, at the offices of Agro-Chem, Inc., 11150 West Addison, Franklin Park, Illinois.

Check your interests:

- Lawns
- Ornamentals
- Flowers
- Soil-rebuilding
- Natural fertilizers
- Other \_\_\_\_\_

Check one:

- Advanced registration. Price is \$435 when check is enclosed with this registration form.
  - Deferred payment. Price is \$495 when paid at the door or billed. Admission subject to availability.
- Fee includes lunches and snacks, text, surveying and problem-diagnosing material and equipment.
- Check here if you wish a room reserved at a nearby motel (room will be in your name and at your expense).
  - Number of rooms needed
  - One person  Two persons per room.
  - Single beds  Double bed.
- Details will be sent you.

Make check payable to Consulting Agronomists, Department WT, 11150 West Addison, Franklin Park, IL 60131. If you have any questions, call Don Arenberg at 312/455-8600.

## CLASSIFIEDS

**Rates:** All classifications 70¢ a word. Box number, \$5. All classified ads must be accompanied by check or money order covering full payment. Mail ad copy to: Dawn Anderson, WEEDS, TREES & TURF, 1 East First Street, Duluth, MN 55802.

When answering ads where box number only is given, please address as follows: Box number c/o WEEDS, TREES & TURF, Classified Ad Department, 120 West Second Street, Duluth, MN 55802.

### HELP WANTED

Wanted: Experienced Nursery Manager, Landscape Architect and 3 Crew Foreman. Nursery Manager to run new 170 acre Nursery in New Lenox, Illinois and Landscape Architect to work in our Hickory Hills office. Crew Foreman to run landscape and nursery crews. Applicants must have good experience and references. Send resume to Teerling Landscaping, Inc., 7750 West 95th Street, Hickory Hills, Illinois 60457.

Sales Representatives. We have several positions open in New England selling tree care services. Strong sales with knowledge of arboriculture required. Management ability desirable. Please write Paul Poirier, Bartlett Tree Experts, 240 Highland Ave., Seekonk, Mass. 02771.

Turf Farm General Manager to establish sod farm in Central Florida. I need a hands on manager who wants to work with minimum supervision. We are an established company in the horticultural field which is diversifying into other segments of the green industry. Write WTT Box 260.

**WANTED: Firewood Distributors** for energy conservations company. Inventory investment range — \$2000 to \$10,000 — depending on location. Serious replies to: HOME FIREWOOD, P.O. Box 141 Sta. B., Hamilton, Ontario L8L 7O7 Canada.

Career opportunity in Pittsburgh. Chemical lawn care company desires Senior Applicator. Excellent salary, benefits and bonus with outstanding future. Turf experience necessary with excellent past employment history. Send resume to WTT Box 258.

**HELP WANTED: GENERAL MANAGER:** For a success oriented chemical lawn care firm in the Washington D.C. area. We are growing and need a take charge individual to lead the way. A thorough working knowledge of liquid & granular applications is required and at least (2) two years management experience. Send resume and salary history to: Dennis J. McNeil, Johnson Lawn Systems, Inc., 13760 Travilah Road, Rockville, Maryland 20850.

**MANAGER** needed for lawn care company in Houston, Texas. Must have sales experience and be aggressive. Long working hours all year. Turf knowledge is a must. Answer this ad ONLY if you feel you fit this description. Excellent salary, great benefits and best opportunity for advancement in the lawn care industry! Send resume and include present salary requirements and financial expectations for next 1,2,3,4,5 years. Write WTT Box 261.

**IRRIGATION SUPERVISOR** for established Connecticut irrigation contractor. Previous experience in installation and supervision of irrigation crews essential. Excellent opportunity to join a rapidly expanding company. Excellent salary and future for qualified person. Send complete resume and salary history to Mark Sosnowitz, Sprinklescape, P.O. Box 175, Glenville Station, Greenwich, Conn. 06830 (203) 869-4149.

### FOR SALE

**LAWN SPRAYING BUSINESS.** Established Ohio liquid lawn care business for sale. 5000 accounts. Six figure selling price. Owner could assist buyer. Write WTT Box 255.

**FOR SALE:** Lawn maintenance business. Working partner or buyer wanted for \$100,000 gross mowing operation. \$10,000 minimum investment. Write WTT Box 256.

**CLEVELAND AREA OPPORTUNITY** — Landscape and lawn care business for sale. Turn key operation available with or without property and buildings. Sales exceeding one million annually. Terms available. Write WTT Box 254.

**FOR SALE:** Landscape Maintenance business. Move to Colorado and own one of Denver's largest landscape maintenance business. Well established for seven years, with unlimited growth potential. Write L.M.B. 7212 S. Costillo, Littleton, CO. 80120.

For Sale. 1976 GMC 6500 series lawn spray truck. Allison automatic transmission, 1500 gallon fiberglass tank, electric hose reel and hose, Meyer 200 6 gpm centrifugal pump. Will handle liquid or solids. Ideal for nurse truck as well as spray truck. Complete \$10,500 or cab and chassis only \$4,500. (312) 438-5161.

**LANDSCAPING BUSINESS** — suburb of Milwaukee, excellent reputation, trucks, equipment, year-round business, high potential. Grossing over \$200,000. Owner wants to retire; can assist buyer; will finance. Bluemel's Landscaping, 4930 W. Loomis Rd., Greenfield, Wis., 53220, (414) 282-4220.

For Sale: Minneapolis Area Opportunity 50 year old quality Tree Service business available for \$23,000 equipment price. (\$150,000-\$200,000 volume) (612) 937-9770.

## LEARN PROFESSIONAL LANDSCAPING



We prepare you to cash in on countless money-making opportunities in modern landscaping and show you how, by easy steps, to start your own business part or full time. You will learn latest developments in Modern Landscaping, including creative design—plant propagation—revolutionary new methods of growing in manufactured soils—practical soil testing—growth regulators—the low down on fertilizers—easy ways of plant identification—estimating and contracting. My unique home study course features easy to understand assignments with careful detailed illustrations. Certificate Awarded. May I send FREE, and without obligation, my informative **BOOKLET?**

**LIFETIME CAREER SCHOOLS** Dept. A-891  
2251 Barry Avenue Los Angeles, Ca 90064

Write 124 on reader service card

## Our '81 Line is Great!

Get the Details  
at the ASPA Convention!

"The New Concept People"



955 W. Walnut Street • Canal Winchester, Ohio 43110  
(614) 837-9096





## ENSYLVA CREEPS WHILE YOU SLEEP

Ensylva is the creeping red fescue that really does creep. Not only while you sleep, but around the clock.

Past performances prove that it matches some of the bluegrasses in its ability to creep and outshines other fine fescues that are called "creepers."

Scientists and turf managers have learned that some creeping red fescues fail to creep or fill in open spots. But that's not true with Ensylva.

Under either intensive or minimum maintenance Ensylva normally is more aggressive and it more quickly heals scars and fills in open areas in the turf.

It's also a handsome grass which germinates rapidly. Only the ryegrasses germinate faster. That's one reason it is often used as a nursegrass for the various Kentucky bluegrasses.

Ensylva is also a low maintenance variety which doesn't require frequent mowing and it will hold its color even under conditions of low moisture and fertility.

**Look into Ensylva. It's the top quality creeping red fescue you know will creep.**

A Product of



**INTERNATIONAL SEEDS, INC.**

P.O. Box 168, Halsey, Oregon 97348

Telephone (503) 369-2251 • TWX 510/590-0765

## USED EQUIPMENT

**BRUSH CHIPPERS**, used Bean sprayers, Model 10 Vermeer stumpers, Hydro-Axs and bucket trucks. Lease or for sale. Large inventory available. Call or write P.C. Gould Sales Company, Plains Road, Essex, Conn. 06426. (203) 767-1636.

**HI-RANGERS AERIAL BASKETS** 65', 57', and 53'. Skyworkers aerial baskets 65', 50', 40'. Vermeer stump cutter 1560, 6. Vermeer tree spade 66, TS 44. Asplundh bucket and brush chippers. Bean sprayer, 9 ton trailer. Parkway Tree Service, 12026 W. Cherry, Wauwatosa, Wisc. 53226. (414) 257-1555.

**HI-RANGER** 45' mounted on 63 GMC Utility Truck. Excellent condition — Picture on Request. Call Toll-Free (303) 761-3052. 1408 W. Quincy Ave., Englewood, CO 80110.

**AERIAL BUCKETS**, call Aerial Hydraulic Equipment, Essex, Conn. (203) 767-1636 — For brush chippers, Vermeer stumpers, sprayers, Hydro-Ax's, log loaders available for immediate sale, call P.C. Gould Sales Company, Plains Road, Essex, Conn. 06426. (203) 767-1636.

**FOR SALE:** 78 inch Big John tree mover, serial 32 in good condition, original owner. Trees, Inc. (517) 627-9155.

**1978 Princeton** Sod Harvester Self Propelled, Diesel, \$28,000. Don Clark, 4206 51st St. E., Bradenton, Fla. (813) 322-1505.

Spyder fork lift: New engine, tires and paint. Edgewood Turf, 5402 Edgewood Road, Crystal Lake, IL 60014. (815) 459-3358.

**SPRAYER**, Broyhill model 960, 400 gallon, reel, hose, nozzle, 9HPB&S, 180 psi. Also two 550 gallon Invert mix units and 14' Heil dumped. (812) 882-7830.

**FOR SALE:** Gandy 10 ft. spreader, excellent condition. \$700.00 (517) 627-2820.

**1200 gallon Finn Hydro Seeder** with hose, reel, gun. Like new on tandem trailer — Plus mulch and seed. 1-513-424-2052.

1977 Princeton Self-Propelled Sod Harvester with Diesel Engine. Must Sell. (402) 624-6385.

**CHIPPER BOX** complete with hydraulic cylinder — Excellent \$850.00 phone (201) 922-9393.

## MISCELLANEOUS

**Prepare now** to increase next year's profits. "Garden Tips" the monthly customer newsletter with your company name/phone. Proven response . . . cements customer relations, gets them to spend more, opens new doors expertly in new expansion areas. Low cost, effective profit building. Call today (516) 538-6444, we'll send complete information or write: Garden Tips, Box 117, Garden City, NY 11530.

**LANDSCAPE DESIGN KIT**, 37 rubber symbol stamps, ink pad, \$38.50 postpaid. California add \$2.16 tax. Stamp kit brochures available. T-Gordon's, Box 741, Dept. WT, Reseda, California 91335. (213) 881-2808.

**CHALLENGING CAREER** — Above average pay. Two-year Associate in Applied Science degree in Golf Course Operations/Landscape Technology. Financial assistance available. Write Western Texas College, Snyder, TX 79549. (915) 573-8511.

## WANTED TO BUY

**WANTED TO BUY — USED BIG ROLL SOD CUTTER** Write to WTT Box 259.

## SEEDS

**SOD QUALITY SEEDS:** Adelphi, Glade, Cheri, Nugget, Merion, Fylking, Majestic, Baron & Touchdown bluegrasses, also fine fescues. Manhattan ryegrass. Custom mixing available. Michigan State Seed, Grand Ledge, Michigan 48837. Phone (517) 627-2164.

## BUSINESS OPPORTUNITIES

**WANT TO BUY OR SELL** a golf course? Exclusively golf course transactions and appraisals. Ask for our catalog. McKay Golf and Country Club Properties, 15553 N. East Street, Lansing, Michigan 48906. Phone (517) 484-7726.

## ADVERTISERS

Agro-Chem, Inc. . . . .	73
American Enka, Inc. . . . .	57
Brouwer Turf Equipment, Ltd. . . . .	45
Chevron Chemical Co. . . . .	69
Ciba-Geigy Corp. . . . .	78, 79
Cushman-Turf . . . . .	27, 36, 37
Diamond Shamrock/AG Chem . . . . .	32, 33
Ditch Witch Equipment . . . . .	60, 61
Dow Chemical U.S.A. . . . .	40, 41
Estech General Chemicals Corp. . . . .	43
Excel Industries . . . . .	51
Glenmac, Inc. . . . .	31
Green Thumb Lawn Service . . . . .	72
Hahn, Inc. . . . .	58
International Seeds Inc. . . . .	7, 23, 75
International Spike Inc. . . . .	14
Jacobsen/Div. of Textron . . . . .	9, 11, 13, 15
Kees Mfg. Co., F.D. . . . .	26
Lifetime Career Schools . . . . .	74
Lofts Pedigreed Seed Co. . . . .	80
Mallinckrodt, Inc. . . . .	54
Manhattan Ryegrass Growers Assoc. . . . .	25
McDowell Mfg. Co. . . . .	56
Mitsubishi Agricultural . . . . .	53
Monsanto . . . . .	35
Mott Corporation . . . . .	21
Nelson Corporation, L.R. . . . .	67
Pennfine Perennial Ryegrass . . . . .	44, 68, 70
Princeton Mfg. Co. . . . .	31, 74
Rain Bird Sprinkler Mfg. Corp. . . . .	65
Rhone-Poulenc, Inc. . . . .	4, 5, 39, 63
Ryan Turf-Care Equipment . . . . .	77
Snowco . . . . .	6
Solo Incorporated . . . . .	64
Spyder Sales, Inc. . . . .	62
Tee-2-Green Corp. . . . .	2
Telso Industries . . . . .	18
3M Company . . . . .	48, 49
Toro Company . . . . .	19
Toro Company/Irrigation Div. . . . .	71
Vans Pines, Inc. . . . .	21
Velsicol Chemical Corp. . . . .	59
Vermeer Mfg. Co. . . . .	66

send a message...

...write here.

1. Number of insertions: (circle) 1 2 3 6 12
2. Start with (month) \_\_\_\_\_ issue (Copy must be in by 1st of month preceding)
3. Amount enclosed: \$ \_\_\_\_\_

PAYMENT MUST ACCOMPANY ORDER. WE'LL BILL RATED FIRMS.

NAME \_\_\_\_\_ COMPANY \_\_\_\_\_  
 STREET \_\_\_\_\_  
 CITY \_\_\_\_\_ STATE \_\_\_\_\_ ZIP \_\_\_\_\_

MAIL AD COPY TO: DAWN ANDERSON, WEEDS, TREES & TURF, 1 EAST FIRST STREET, DULUTH, MN. 55802.

**RATES:** 70 cents per word (minimum charge, \$15). Bold face words or words in all capital letters charged at 80 cents per word. Boxed or display ads charged at \$60 per column inch (one inch minimum). For ads using blind box number, add \$5 to total cost of ad.

# More precise holes. More precise rolls.

Shown with optional windrow.



Removes uniform cores up to 3" long.



Shown with optional core processor.

## That's the Greensaire<sup>®</sup> difference.

Precision is the name of the game on the greens. When it comes to greens aeration, the name associated with precision has been the Ryan Greensaire aerator since 1958. The self-propelled Greensaire II for 1981 continues that tradition.

The tines of the Greensaire II cleanly penetrate the turf in an up-and-down motion, removing 36 cores—up to 3" long—from every square foot of turf. Yet the process is so precise that the holes it makes should not affect the true roll of a ball.

Powered by a tough 8-hp engine, the Greensaire II takes a full 24" swath and lets you aerate up to 8,000 square feet per hour. And, with four sizes of interchangeable tines, you can achieve precisely the amount of aeration your greens need.

What's more, by attaching the optional Core Processor, you can separate and collect the thatch, and return the soil as top dressing—all in one operation.

For the same precision in a smaller size, choose the self-propelled Greensaire 16. It offers the same choice of tine sizes, and can aerate up to 4,000 square feet per hour.

Healthy greens aeration. That's the Greensaire difference. To find out why the Greensaire is the ultimate in greens aeration, complete and return this coupon today.

81-CUR-1

**RYAN<sup>®</sup>** Day-In, Day-Out  
Turf-Care Performance.  
EQUIPMENT 2022 Cushman, P. O. Box 82409  
Lincoln, NE 68501

### The Greensaire Aerators

Ryan, I want to see precisely what your aerators can do for me.

- I'd like a demonstration of the Greensaire II.
- With Core Processor attachment.
- I'd like a demonstration of the Greensaire 16.
- Send me your new 1981 catalog.

Name \_\_\_\_\_ Title \_\_\_\_\_  
Company \_\_\_\_\_  
Address \_\_\_\_\_  
City \_\_\_\_\_ State \_\_\_\_\_ Zip \_\_\_\_\_



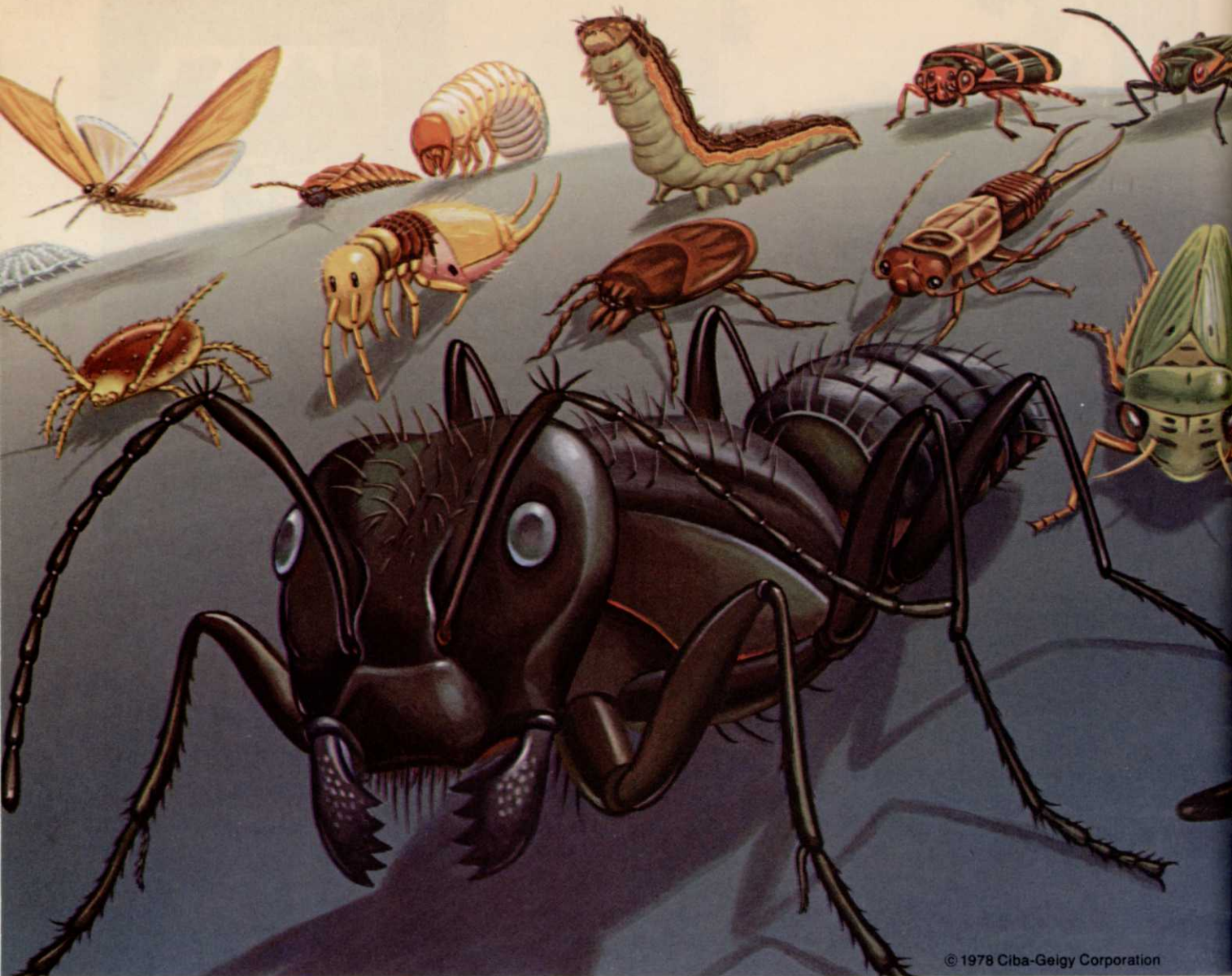
# Diazinon is labeled for How many will you

Diazinon® not only controls,  
but is labeled for more turf insects  
than any other turf insecticide.

Just take a look, it's the biggest

label in the business.

You'll count 24 turf insects in  
all. Including white grubs, sod  
webworms, cutworms, chinch bugs,





# every insect on this page. face this season?

armyworms and ants.  
This season, be sure to ask your  
local supplier for Diazinon.  
And put the biggest label in the

business to work for you.  
Ciba-Geigy, Ag. Div., Box  
11422, Greensboro, NC 27409  
**Diazinon by CIBA-GEIGY**  
The biggest label in the business.



Write 105 on reader service card

**CIBA-GEIGY**