

Circle
the
Reader
Service
numbers
of those
items of
interest
to you.

Inquiries serviced for 90 days from date of issue. For those countries outside the U.S., please apply appropriate postage before mailing.

READER SERVICE INFORMATION CARD 12-81 2

For more information on products or services mentioned in this issue, circle the corresponding numbers below, fill in appropriate information and mail today.

101	115	129	143	157	171	185	199	213	227
102	116	130	144	158	172	186	200	214	228
103	117	131	145	159	173	187	201	215	229
104	118	132	146	160	174	188	202	216	230
105	119	133	147	161	175	189	203	217	231
106	120	134	148	162	176	190	204	218	232
107	121	135	149	163	177	191	205	219	233
108	122	136	150	164	178	192	206	220	234
109	123	137	151	165	179	193	207	221	235
110	124	138	152	166	180	194	208	222	236
111	125	139	153	167	181	195	209	223	237
112	126	140	154	168	182	196	210	224	238
113	127	141	155	169	183	197	211	225	239
114	128	142	156	170	184	198	212	226	240

Your primary business at this location is: (check one only in A, B or C)

A. LANDSCAPING GROUND CARE FACILITIES:

- 0005 GOLF COURSES
 0010 SPORT COMPLEXES
 0015 PARKS
 0020 RIGHTS-OF-WAY MAINTENANCE FOR HIGHWAYS, RAILROADS, & UTILITIES
 0025 SCHOOLS, COLLEGES & UNIVERSITIES
 0030 INDUSTRIAL & OFFICE PARKS/PLANTS
 0035 SHOPPING CENTERS, PLAZAS AND MALLS
 0040 PRIVATE/PUBLIC ESTATES & MUSEUMS
 0045 CONDOMINIUMS/APARTMENTS/HOUSING DEVELOPMENTS/HOTELS/RESORTS

- 0050 CEMETERIES/MEMORIAL GARDENS
 0055 HOSPITAL/HEALTH CARE INSTITUTIONS
 0060 MILITARY INSTALLATIONS & PRISONS
 0065 AIRPORTS
 0070 MULTIPLE GOVERNMENT/MUNICIPAL FACILITIES
 OTHER TYPE OF FACILITY (PLEASE SPECIFY) _____

B. CONTRACTORS/SERVICE COMPANIES/CONSULTANTS:

- 0105 LANDSCAPE CONTRACTORS (INSTALLATION & MAINTENANCE)
 0110 LAWN CARE SERVICE COMPANIES
 0115 CUSTOM CHEMICAL APPLICATORS (GROUND)
 0120 TREE SERVICE COMPANIES/ARBORISTS
 0125 LANDSCAPE ARCHITECTS
 0130 EROSION CONTROL COMPANIES
 0135 EXTENSION AGENTS/CONSULTANTS FOR HORTICULTURE
 0140 IRRIGATION CONTRACTORS
 OTHER CONTRACTOR OR SERVICE (PLEASE SPECIFY) _____

C. SUPPLIERS:

- 0205 SOD GROWERS
 0210 EQUIPMENT DEALER/DISTRIBUTOR
 OTHER SUPPLIER (PLEASE SPECIFY) _____

Approximately how many acres of vegetation do you maintain or manage? _____

What is your title? (please specify) _____

NAME _____

BUSINESS NAME _____ ADDRESS _____

CITY _____ STATE _____ ZIP _____ TELEPHONE () _____

AREA CODE

I WISH TO RECEIVE (CONTINUE RECEIVING) WEEDS, TREES & TURF EACH MONTH YES NO

SIGNATURE _____ DATE _____



NO POSTAGE
NECESSARY
IF MAILED
IN THE
UNITED STATES

BUSINESS REPLY CARD

FIRST CLASS PERMIT NO. 665 DULUTH, MINNESOTA

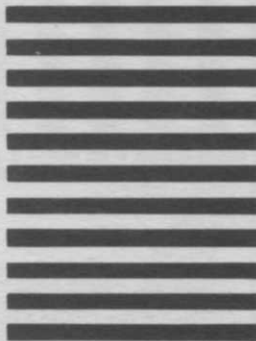
POSTAGE WILL BE PAID BY ADDRESSEE

READER SERVICE DEPARTMENT

WEEDS TREES & TURF

POST OFFICE BOX 6049

DULUTH, MINNESOTA 55806



**GET
MORE
FACTS**

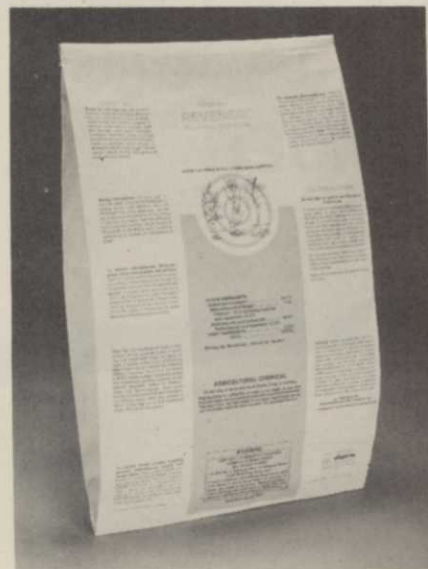
Vermeer TS-24 Tree Spade is designed primarily for digging and packaging small trees and shrubs. It is engi-



neered to work as a tree packaging attachment for any skid steer or front end loader with an auxiliary hydraulic hookup and a minimum capacity of 1,200 lbs. On skid steer loaders, the 910-lb. unit slips onto the lift forks.

Circle No. 183 on Reader Inquiry Card

Hopkins' Revenge is a double-acting systemic herbicide for control of established annual and perennial grasses on



non-crop land such as roadsides and rights-of-way. It contains two herbicides, Dowpon M and Sodium TCA and is formulated to combat Johnsongrass, Bermudagrass, cattails and other pest grasses.

Circle No. 184 on Reader Inquiry Card

Mertz, Inc.'s Drill King is a mobile hydraulic unit that can drill holes from 3 inches to 36 feet. The four-wheel-drive



drill is mounted on its own welded steel chassis, with articulated steering and hydraulic ground drives. All systems are operated by hydraulics.

Circle No. 185 on Reader Inquiry Card

Tennant Co.'s Trailblazer is a grounds maintenance machine that is manufactured to sweep turf and hard surfaces at rates of 3 to 7¼ acres per hour. According to Tennant, the machine uses either a brush or paddle to clean a 60-in. path and simply drives from one surface to another with no adjustments needed. A jet stream of air propels litter



into a 2.6-cubic-yard hopper and a 500-sq.-ft. filter permits nearly dust-free operation.

Circle No. 186 on Reader Inquiry Card

Standard Golf Co. has introduced a drag brush for topdressing greens that is designed to eliminate the stress caused by metal drags. The Pro-Line Brush-Easy mounts six heavy-duty brushes in an aluminum frame that has a total weight of 22 lbs. The tow bar is

Continues on page 56

Does the condition of your turf make you see red?

Switching to Pennfine Perennial Ryegrass could color your outlook. It's long been the standard of quality against which other varieties are compared. Why not simplify your life? Go with the most widely used fine-leaved perennial ryegrass in the nation. By the way, if you have trouble finding Pennfine, just ask the turf pro with the best-looking turf around. Chances are he's already using it. Pennfine Perennial Ryegrass, P.O. Box 923, Minneapolis, MN 55440

Circle No. 126 on Reader Inquiry Card

How to make a
great crabgrass herbicide
even better for turf.

About the only thing that could make
Chipco® Ronstar® G herbicide better for
turf would be to lower the cost. So that's
what we've done. Now you can get the
superior performance of Ronstar G at a



**REDUCED
PRICE**

CT NUMBER

"THE RIGHT APPROACH"® TO GOOD TU

CHIPCO®

dramatically reduced price.

Nothing controls crabgrass and goose grass better than Ronstar G. And you get this great weed control for the whole season with just one easy, early application.

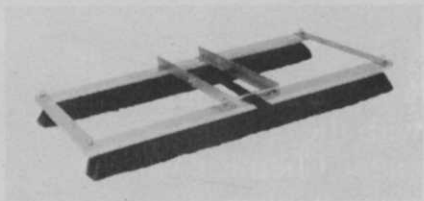
Treat your turf with Ronstar G. The great crabgrass herbicide with the better-than-ever price. Rhône-Poulenc Chemical Co. Agrochemical Div., Rhône-Poulenc, Inc. Monmouth Junction, NJ 08852.



RONSTAR[®] G

HERBICIDE

Circle No. 129 on Reader Service Card



designed so that the Brush-Easy may towed in either direction for longer brush life.

Circle No. 187 on Reader Inquiry Card

Excel Industries has introduced a V-blade snow removal attachment for Hustler grounds maintenance tractors



with a free float feature to follow uneven surfaces. While many V-blade systems are ineffective on uneven surfaces, the Excel float feature permits the blade to follow contour and clear a swath 60-in. wide.

Circle No. 188 on Reader Inquiry Card

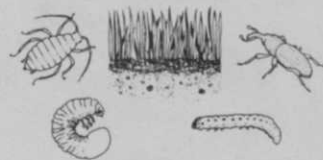
Bunton Co. has added the 19 H.P. Wisconsin diesel engine to its out-front rotary tractor line. The air-cooled engine has a forged crankshaft, cast iron



cylinder and die-cast aluminum crankcase. The fuel injection pump is automatically reset by the governor for quick starts and the two-cylinder unit weighs only 194 lbs.

Circle No. 189 on Reader Inquiry Card

DESTRUCTIVE TURF INSECTS



BY

DR. HARRY NIEMCZYK, ENTOMOLOGIST

Destructive Turf Insects by Dr. Harry Niemczyk covers pests of warm and cool season grasses and contains over 130 color photos. Included is a color photo guide to identifying insects and mites that inhabit the soil, thatch, leaves and stems.

Circle No. 190 on Reader Inquiry Card

ARE YOU A BUSINESSMAN INTERESTED IN EXPANDING INTO PROFESSIONAL TURF CARE?

GREEN PRO COOPERATIVE SERVICES is the only non-franchise organization that offers you complete training, economical equipment, all necessary forms, contracts, advertising and promotion training, proven advertising brochures, and **COMPLETE BACK-UP.**

We offer our complete services to those who do not want to give up their individuality—nor want to pay huge franchise fees—yet realize that guidance will propel them toward success faster and **WITHOUT** costly errors. Errors which are inevitable when “learning-by-doing-it-yourself.”



Robert Riley

CALL

(516) 483-0100

or write

Green Pro Cooperative Services

380 S. Franklin Street • Hempstead, New York 11550

Circle No. 111 on Reader Inquiry Card

HORTICULTURE

HRI Names John Flemer President; Heard VP

John Flemer, Princeton Nurseries, Princeton, NJ, has been elected president of the Horticultural Research Institute. Flemer succeeds Robert Siebenthaler who will remain on the executive committee as past president.

Bill Heard, Heard Gardens, Des Moines, IA, has been elected vice president, while Bob Voorheis, Blue Ridge Nurseries, Kansas City, MO, has been elected treasurer. William Adams, Adams Citrus Nursery, Haines City, FL and Tom Pinney Jr., Evergreen Nursery Co., Sturgeon Bay, WI, have also been named to the HRI executive committee.

SEED

Tim Bowyer to head Sunbelt Seed Company

Tim Bowyer, PhD, has been named president and chief executive officer of Sunbelt Seed Co., Tucker, GA. Bowyer was formerly vice president of Southern Turf.



Bowyer has done extensive work in the areas of ornamental and turfgrass management. He was assistant extension plant pathologist at the University of Illinois and assistant professor of plant pathology at the University of Georgia.

Sunbelt Seed is a cooperative venture between Southern Turf Nurseries, Tifton, GA, and Loft's Seed Co., Bound Brook, NJ. Sunbelt markets a full line of grass seed for residential, commercial and athletic field applications.



Century Toro Distributors, in cooperation with Toro Co., has loaned two mowing units to the Ohio State University Turfgrass Research Program. A Turf Pro 84 and Groundmaster 72, which are valued at more than \$20,000, are expected to save the research program much time and expense in labor and equipment maintenance. Pictured (from left to right) are John Fitzgerald, General Sales Manager of Century Toro; Dr. Roy Kottman, Dean of the College of Agriculture; Dr. Berlie Schmidt, Chairman, Department of Agronomy; Dr. John Street, Turf Extension; Dr. Keith Karnok, Turf Research; and Mike Slinger, Sales Representative, Century Toro.

Does your turf make your reputation good as gold?

It does if it's seeded with Pennfine Perennial Ryegrass. Since its development by Penn State University in 1970, Pennfine has become the number one selling fine-leaved perennial ryegrass in the nation. And the thousands of turf professionals who continue using Pennfine are the biggest vote of confidence. You'll find top-quality Pennfine competitively priced and in ready supply. Pennfine Perennial Ryegrass, P.O. Box 923, Minneapolis, MN 55440

CLASSIFIEDS

RATES: 75 cents per word (minimum charge, \$20). Bold face words or words in all capital letters charged at \$1.00 per word. Boxed or display ads charged at \$70 per column inch (one inch minimum). Agency commissions will be given only when camera-ready art is provided by agency. For ads using blind box number, add \$5 to total cost of ad. Send ad copy with payment to Dawn Anderson, WEEDS, TREES & TURF, 1 East First Street, Duluth, MN 55802.

BOX NUMBER REPLIES: Mail Box number replies to: WEEDS, TREES & TURF, Classified Ad Department, 120 W. 2nd St., Duluth, MN 55802. Please include box number in address.

**Use
our
classified
blind
box
service
for
confidential
results!**

HELP WANTED

HELP WANTED: Sales Representative for Upstate New York territory with Jacobsen Distributor. Salary, expenses, vehicle provided, commission. Excellent benefit package. Send Resume to: S.V. Moffett Co., Inc., Thruway Park Drive, West Henrietta, N.Y. 14586. (716) 334-0100. 1/82

ESTATE GROUNDS SUPERINTENDENT—Unique professional opportunity at historic mid-western estate, now undergoing comprehensive site restoration toward eventual conversion to public institution. This fine property offers an exceptional challenge for an experienced, enterprising professional who seeks expanded career opportunities in estate horticulture and management. Qualifications: B. S. in landscape horticulture or equivalent; substantial experience in all aspects of greenhouse and grounds operation, management and administration; communication and public relations skills necessary. Attractive compensation package; position available January, 1982. All inquiries will remain confidential. For complete information, contact: Estate Consultant, P.O. Box 8665, Ann Arbor, Michigan 48107. Telephone: (313) 662-4457. 12/81

GROUND SUPERVISOR — UNIVERSITY OF NEVADA, LAS VEGAS — LAS VEGAS, NEVADA. Salary Range \$17,773/\$23,999 annual. Minimum Qualifications: A Bachelors Degree from an accredited college or university, with major work in ornamental horticulture or closely related field. With formal training in plant growth, soils, landscape architecture, fertilizers and pest controls and one year professional experience in landscaping parks maintenance or a closely related field. Fast growing young institution with excellent advancement program and fringe benefits. For information or application contact Charles N. Moody, Director of Physical Plant, University of Nevada, Las Vegas, Las Vegas, Nevada 89154 or phone (702) 739-3281. An Equal Opportunity Employer. 12/81

Golf Course Maintenance Supervisor — For an 18-hole and a 9-hole executive municipal golf course. Excellent benefits, vehicle provided. Salary range — \$17,000 to \$23,000. Send resume to Jerry Zwolak, Waukegan Park District, P.O. Box 708, Waukegan, IL 60085. 12/81

CORPORATE FIELD REPRESENTATIVE — Responsibilities center around servicing and advising our lawn and tree care franchises in Northern Illinois and Indiana. Within a year or two, there is a possibility of transferring to another city to manage the servicing of our franchises in that area. The ideal candidate will have at least Assistant Branch Manager experience and a good working knowledge of lawn care. A personable manner and well developed communication skills are a must. This is an exceptional opportunity with a young, but prominent, lawn and tree care company which is expanding and growing tremendously. Competitive salary and benefits. Send resume and salary history/requirements to: Spring-Green Lawn Care Corp., P.O. Box 908, Naperville, IL 60566. 12/81

TOP NOTCH CLIMBERS needed. Minimum 3 years rope & saddle experience in first quality residential tree work required. Top pay with established firm. Holcomb Tree Service, P.O. Box 28637, Dallas, TX 75225. (214) 327-9311 12/81

DEALER/REPRESENTATIVES NEEDED for Specialized Lawn-Shrub-Tree Care Products, Equipment, and Marketing and Educational Programs. Write: Green Pro Cooperative Services, 380 S. Franklin Street, Hempstead, NY 11550, Attn. R. Riley or Call (516) 538-6444. 12/81

POSITION WANTED

PARKS SUPERVISOR — available Jan. 1, 1982 — 3 years parks experience, 2 years nursery related work, B.S. in Horticulture. Seeking position with progressive public or private park. Resume and references on request. Reply to Parks, 148 Vine St., Athens, GA 30601. 12/81

WANTED

We are looking for a man or company with extensive irrigation and landscaping experience to move to Tampa, FL. Will consider purchasing company. Write P.O. Box 10828, Tampa, FL 33679 with full details on your company, years of experience, number of employees, etc. 12/81

Wanted Bermuda King PTO Sprig Harvester and PTO driven Sprig Planter — (513) 424-5722. 12/81

AUTHORIZED DEALERS WANTED to sell and distribute Roll'n Grow lawn products seeded grass, flowers, and vegetable mats. (Under new management.) More information call (309) 697-2424 or (309) 674-0250. Write: Roll'n Grow Lawns, 7100 Adams, Bartonville, IL 61607. 12/81

Large Lindig & Royer Soil Shredders, Lewis Equipment Company, 320 Third Street, SW., Winter Haven, Florida 33880. (813) 294-5893.

MISCELLANEOUS

COLLECTIONS A PROBLEM? Try our unique, effective yet inexpensive system. We are so confident that it will work for you that we offer to let you try it free. Satisfaction guaranteed. For details write—Collection, 5 Tuscan Court, Huntington Station, NY 11746. 12/81

KELWAY® SOIL ACIDITY TESTER, used by PROFESSIONALS nationwide. Direct reading, lightweight, portable, fully serviceable, no power source. Model HB-2 reads moisture too. Available through distributors. For brochure contact Kel Instruments Co., Inc., Dept. T. P.O. Box 1869, Clifton, N.J. 07015 (201) 471-3954.

LANDSCAPE DESIGN KIT, 37 rubber symbol stamps, ink pad, \$38.50 postpaid. California add \$2.16 tax. Stamps kit brochures available. American Stamp Co., Box 741, Dept. WT, Reseda, California 91335. Phone (213) 881-2808. TF

INTERESTED in expanding into **SHRUB & TREE CARE** (insect/disease control and feeding)? Attend our unique four-day **ACADEMY** January 13-16, 1982. Prepares you—just as if you bought into a franchise—to take advantage of big profits waiting for you. Tuition includes **EVERYTHING YOU NEED** to get started, including advertising, promotional pieces, specialized forms and, of course, **BASIC KNOWLEDGE** from several teachers with specialized experience you'll find invaluable. Call **GREEN PRO COOPERATIVE SERVICES** (516) 483-0100 or write to 380 S. Franklin Street, Hempstead, NY 11550. Remember, on-the-job tuition is the most expensive kind. Get it for a very small fee before you get on the job. We've already paid for the mistakes. 12/81

NEW BALL BARRIER NETTING: Made of olefin fibers. 6½ feet and 25 feet high. Strong and tough. Will not rust. Easy to handle. For Driving Ranges and Golf Courses. Keep golf balls from straying off-course. J.A. Cissel Co., Inc., Dept. JK, P.O. Box 339, Farmingdale, N.J. 07727. (800) 631-2234. 5/82

CHALLENGING CAREER. Above average pay. Two year associate in applied science degree in golf course operations/Landscape technology. Financial assistance available. Write Western Texas College, Snyder, TX 79549. (915) 573-8511. 2/82

USED EQUIPMENT

Jacobsen 524-100 Self propelled Aerator, De-thatcher, Overseeder. Used 10 hours, Mint condition. WRIGHT Lawn Spray—East Amherst, NY 14051 (716) 741-3336. 12/81

Lyons Green Turf For Sale

1979 Nunes vacuum turf sweeper—\$10,000. 7' wide with thatch beater, 13 yard hopper Hi-Boy dump.

1979 Nunes 14 ft. rotary mower, 3 gangs, 3 blades each—\$20,000. Mounted on Ford tractor, 420 hrs. use.

1978 Princeton Tow Boy sod harvester, model 4020—\$12,000.

1978 Roseman 15 ft. reel mower. 7 gangs, hydraulically driven—\$4,000.

1978 Kenworth cab-over tractor. 400 Cummins engine, 13-speed road ranger transmission, 165" wheel base. Only 67,000 miles use—\$50,000.

1978 Trailmobile 42 ft. trailer. Aluminum frame, set up to carry spider hyster—\$10,000. 1978 spider hyster—\$9,000.

(Package of tractor, trailer and hyster—\$70,000.)

Brillion grass seeder, 10 ft. wide—\$2,500.

Rt. 4, Box 240
Caldwell, ID 83605
(208) 459-7291

12/81

Continues on page 10

WE REACH THE PEOPLE YOU NEED TO REACH!

Place a recruitment ad in any of these HARCOURT BRACE JOVANOVICH PUBLICATIONS - and you know your ad dollar is wisely spent.

HBJ PUBLICATIONS does a better job of reaching those who count (*your potential employees*) than any other business publisher.

Magazine	Circulation	Magazine	Circulation
Body Fashions/Intimate Apparel	10549	LP/Gas	13758
Dental Laboratory Review	17184	Lawn Care Industry	12648
Dental Management	96222	Neurology	12032
Drug & Cosmetic Industry	7500	Paper Sales	12200
Electronic Technician/Dealer	49096	Pest Control	14498
Fast Service	50537	Professional Remodeling	32995
Flooring	22000	Quick Frozen Foods	20750
Food Management	49963	Rent All	11139
Hearing Instruments	16592	Roofing/Siding/Insulation	18394
Home & Auto	22303	Snack Food	9200
Hotel & Motel Management	36023	Toys, Hobbies & Crafts	13607
Housewares	12800	Weeds Trees & Turf	42677

Don't forget that classified advertising works just as effectively in locating employees as it does if you are looking for a position, have a line, machinery or a business to sell, are seeking representatives or wish to buy a specific item. Let it go to work for you!

HBJ PUBLICATIONS - COUNT ON US TO REACH THOSE WHO COUNT!



Harcourt Brace Jovanovich Publications
One East First Street
Duluth, Minnesota 55802

Call Dawn Anderson at 218-727-8511

Classifieds from page 58

7 gang Brouwer PTO Mower, Excellent, used 2 seasons \$5000; 7 Jacobsen Blitzer mowers, solid rubber—5—10" blades, excellent shape \$350 each, 1 Robark net setter with 10 rolls net, used on 40 acres, \$4000 or \$5500 with net—would consider trade above items for irrigation pipe. Selstad's—(406) 452-5158. 12/81

FOR SALE—GRASSHOPPER RIDER MOWER—44 INCH CUT W/HI VAC—150 HOURS, GOOD CONDITION \$2,000.00. WALNUT CREEK LANDSCAPE, SAN DIMAS, CA. (714) 592-1435. 12/81

For Sale 4-Towable Forklifts
 1974 Champ 4000 lbs. \$10,000
 1974 Liftall 4000 lbs. \$11,000
 1974 Backer York 5000 lbs. \$ 9,500
 1974 Backer York 6000 lbs. \$ 8,700
 All in very good condition
 Clark & Sons, N. 7624 Market St.,
 Spokane, WA 99207 (509) 487-2737
 12/81

HI-RANGER BUCKET TRUCKS, 54' and 51', Flatbed and chip box mits - Merrill brush chipper. Allied Enterprises, Inc., W. 204 N. 11509 Golden-dale Rd., Germantown, WI 53022, (414) 255-6161 anytime. TF

BUCKET TRUCKS, SPRAYERS, MIST Blowers Chippers, Log Splitters, Stump Grinders. Largest selection of reconditioned arborist equipment in the Northeast. Call or write with your needs. **ESSCO, 584 WEST HOFFMAN AVENUE, LINDENHURST, N.Y. 11757. (516) 226-5115. 3/82**

USED GOLF CARS FOR SALE—All makes and models, 3 & 4 wheel, electric or gas. If we don't have your choice in stock we can get it. Transportation available. Mid-Atlantic Equipment Corp., Collegeville, PA. Call Now! (215) 489-1400. TF

L20 LINDIG SOIL SHREDDER: with 35 hp Wisconsin engine and rotary screener—demonstrator, used less than 5 hours. Current price approx. \$16,000. Special price F.O.B. West Henrietta, N.Y. \$11,500. S.V. Moffett Co., Inc. (716) 334-0100. 1/82

For Sale: Brouwer Sod Harvester, 18 inch roll, mounted on M.F. 135 diesel tractor, good condition. Brillion Turf Maker 10 foot seeder, micro seed feature, very good condition, IHC 4500B diesel forklift—6000 lb. capacity. Power shift, 21 foot mast, side shift, differential lock. Phone or write: C & D Equipment Co., 4166 North 126th St., Brookfield, Wis. 53005. (414) 781-1522. 12/81

Two (2) 1980 Spyder Forklifts, one Kohler, one Onan, both have fork extenders, new tires, in use daily, \$12,495 each, or both for \$24,000. The Grass Patch, Inc., 10743 Research Blvd., Austin, TX 78759. (512) 346-2150. 2/82

Model 10 stump cutter. Excellent condition—new in 1976. \$5,500.00. Marrs Tree Service, Shawnee, KS (913) 268-7932. 12/81

1970 Hi-Ranger, 57 foot on International 1600—\$14,000. Ford 8N tractor with front end loader—\$3,150. McGinty Bros., Inc., Route 2, Box 518, Long Grove, IL 60047. (312) 438-5161. 12/81

Backhoe mounted on 1974 International pickup 4x4 dual wheels, 36,000 miles, new paint. Digs 8 feet deep. Excellent condition. \$6,000. Richard Trapasso, Kew Gardens, NY. (212) 849-9008. 12/81

HI-RANGERS AERIAL BASKETS 65', 57', and 53'. Skyworkers aerial baskets 65', 50', 40'. Vermeer stump cutter 1560.6. Vermeer tree spade 66, TS 44. Asplundh bucket and brush chippers. Bean sprayer, 9 ton trailer. Parkway Tree Service, 12026 W. Cherry, Wauwatosa, Wisc. 53226. (414) 257-1555. TF

BUSINESS OPPORTUNITIES

"GARDEN TIPS"—Prepare now to increase next year's profits. "Garden Tips" the monthly customer newsletter, with your company name/phone. Proven response... cements customer relations, gets them to spend more, opens new doors expertly in new expansion areas. Low cost, effective profit building. Call today (516) 483-0100. We'll send complete information. Or write Green Pro Cooperative Services, 380 S. Franklin Street, Hempstead, NY 11550. 12/81

WANT TO BUY OR SELL a golf course? Exclusively golf course transactions and appraisals. Ask for our catalog. McKay Golf and Country Club Properties, 15553 N. East Street, Lansing, Michigan 48906. Phone (517) 484-7726. TF

Classified Advertising is
• Easy • Effective
• Economical

FOR SALE

Used Spray Trucks—Chevy, 700-gallon tanks. Automatic hose reels, mechanical agitation. Call Ron Wilson, (513) 845-0517. 12/81

Completely overhauled and dielectrically insulated 45' Sky-Workers—For Sale and Rent. 90 day guarantee on sales. Call Aerial Lift, Inc., Milford, Conn. (203) 878-0694. TF

LAWN SEED. Wholesale. Full line of top quality grasses. Improved bluegrass varieties, fine fescues and fine bladed ryegrasses. We specialize in custom mixing. Olliger Seed Company, 2705 Wingate Avenue, Akron, Ohio 44314. Call collect (216) 753-2259. 1/82

SKYWORKER AERIAL BUCKETS: Sales, Parts and Service. New and used units available to 65 feet. New and used brush chippers, Hydro Ax's, used stumpers, sprayers and digger derricks also available. Call or write P. C. GOULD SALES COMPANY, Plains Road, Essex, Conn. 06426. (203) 767-1636. 12/81

Western Colorado Tree Service. Established 23 years, part of large booming area with great potential. Operates year round. (303) 625-3481. 1/81

1 used 1978 Princeton self-propelled sod harvester. Model 4816, completely overhauled. Replacement cost over \$45,000. Willing to sacrifice for \$20,000. Cash offer. Contact Eleanor at Circle Leasing of Florida Corp., 1410 N. Westshore Blvd., Suite 803, Tampa, FL 33607. (813) 870-1071. 12/81

Steady cash flow, Retail Nursery and Landscaping Business, located on main thruway. Over 200,000 Value on Nursery stock. 2 trucks and miscellaneous equipment. Price \$150,000. New Port Richey, Florida. Home (813) 842-3207, Business (813) 842-6851. 12/81



ADVERTISERS

Reader Inquiry No.	Page No.
100 Andersons	59
101 BFC Chemicals	27
102 Bowie Industries	40
103 Brouwer Turf Equipment Ltd.	49
104 Bundy Manufacturing Co.	29
105 Cushman	13
106 Cushman	34-35
107 Deere, John	45
108 Diamond Shamrock/AG Chem.	41-43
109 Excell Industries	50
110 Excell Industries	16
111 Green Pro Cooperative Services	56
112 Harley-Davidson Motor Co., Inc.	3
113 Hoffco, Inc.	1
114 International Seeds	CV-3
115 Jacobsen	19
116 Laval Corp., Claude	28
117 Lofts Seed Co.	CV-4
118 Lofts Seed Co.	CV-4
119 Mallinckrodt Inc.	46
120 Mathews Co.	47
121 Milwaukee Metro Sewerage District	33
122 Mobile Aerial Towers, Inc.	17
123 Mott Corp.	47
124 Northrup King	25
125 Pennfine	32
126 Pennfine	53
127 Pennfine	57
128 Rhone Poulenc Inc.	38-39
129 Rhone Poulenc Inc.	54-55
130 Rohm and Haas	30
131 Ryan Turf-Care Equipment	5
132 Stanley Hydraulic Tools	4
133 Tee-2-Green Corp.	7
134 Tennant Co.	48
135 Toro Co.	15
136 Toro Co.—Irrigation Division	23
137 Tuco Agricultural Chemical	CV-2
138 Velsicol Chemical Corp.	14
139 Warren's Turff Nursery, Inc.	24

This index is furnished for the readers' convenience. However, the publisher can not guarantee its accuracy due to circumstances beyond our control.