

This unretouched photo from California demonstrates an advantage of including 20% Citation with an improved blend of bluegrasses. On the left is 100% Kentucky bluegrass damaged by *Fusarium* blight. On the right the Citation-bluegrass mixture shows little or no damage.

# Citation Turf-Type Perennial Ryegrass

Plant Variety Protection  
Number 7500003

...you asked for an all-purpose, deep rooted high temperature tolerant ryegrass...

## This is our answer!



Dr. William Meyer, Research Director, states: "At Turf-Seed, Inc., we set out to develop a turf-type perennial ryegrass with rapid establishment, good heat tolerance and the ability to maintain high quality throughout the hot summer months. We also wanted an attractive, dark green color and improved mowing performance. After years of cross breeding and testing, Turf-Seed developed Citation. I believe it comes very close to the specifications we were looking for in a fine-leaved ryegrass."

Citation had the highest average turf performance rating in a five-year test at Rutgers University. This excellent record has been confirmed by years of proven performance in applied use by turf professionals throughout the United States. Top-quality Citation seed is now available for your use.

"PROGRESS FROM  
THE GROUND UP"



For test results and information write:

Vaughan-Jacklin Corp.  
Bound Brook, NJ 08805  
Downers Grove, IL 60515  
Post Falls, ID 83854  
Landover, MD 20785

Jonathan Green & Sons  
Farmingdale, NJ 07727  
Turf-Seed, Inc.  
Hubbard, OR 97032  
J & L Adikes, Inc.  
Jamaica, NY 11423



# CHIPCO

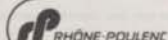


**LONG-LASTING  
CHIPCO® 26019 IS  
STRONG MEDICINE.** If you're serious about protecting your turf against diseases, give it your best shot. Spray Chipco 26019 fungicide. Thousands of superintendents have switched to Chipco 26019 in the past two years.

And no wonder: Chipco 26019 gives you the longest residual. You can cut the number of sprays in your program, and that cuts your costs. And Chipco 26019 prevents the major turf diseases with unsurpassed effectiveness. You'll get good results with Chipco

# 26019<sup>®</sup>

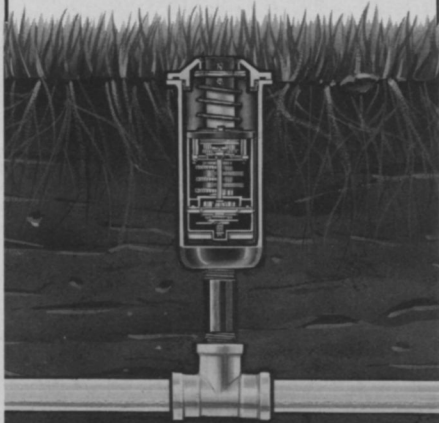


26019 against dollar spot (including benomyl-resistant dollar spot), Helminthosporium (leaf spot and melting out), brown patch, Fusarium blight and Fusarium patch (west of the Cascade Mountains). Chipco 26019 also suppresses grey and pink snow molds. Ask your Chipco distributor or Rhône Poulenc representative about effective, long-lasting Chipco 26019...the strong medicine in turf disease prevention. Rhône Poulenc Chemical Co., Agrochemical Div, Rhône Poulenc Inc. Monmouth Junction, NJ 08852. 

Write 154 on reader service card



**Underneath it all...  
Weather-matic,<sup>®</sup>  
the hidden secret  
of beautiful  
landscaping.**



**Quiet, Cost-effective  
operation for medium  
range with our  
G Series sprinklers**

- Rotary pop-up with sealed gear train.
- Minimal pressure and flow required to pop-up and seal.
- Self flushing action removes particles.
- Full and part circle sprinklers can be valved together.
- Easy to service above ground.
- Arc size field-adjustable from 70° to 340°.
- Arc location adjustable during sprinkler operation.
- Housing, gears and components of highest quality, space-age plastics.
- Optional features: rubber covers, vandal resistant screws, range adjustment on G40F and G40PC.

For additional information about our G Series rotary sprinklers, send the coupon below.



MAIL TO:  
Weather-matic Division  
TELSCO Industries  
P.O. Box 18205  
Dallas, Texas 75218

Send information on:

- G Series Sprinklers     Catalog  
 Distributor Directory     TURF IRRIGATION Manual

NAME \_\_\_\_\_  
COMPANY \_\_\_\_\_  
ADDRESS \_\_\_\_\_  
CITY \_\_\_\_\_ STATE \_\_\_\_\_  
ZIP \_\_\_\_\_ PHONE ( ) \_\_\_\_\_

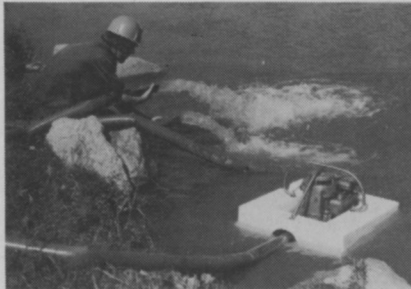
Write 158 on reader service card

**Products from page 90**

body is unfolded, off when the body is closed. Thumbwheel turning knob provides smooth adjustment. It comes with a handy leatherette case from Advantage Distributors.

Write No. 706 on reader service card

**A floating evacuation pump** operates within two inches of water and can pass up to 3/4-inch diameter solids. It discharges water at a rate of 350 to 700 gpm. This Otterbine pump is equipped



with a 3.5 to 8 horsepower Briggs & Stratton engine. With no seals to wear out, it requires little maintenance.

Write No. 707 on reader service card

**A skid-steer loader** comes in the "New Breed" design from the Melroe Division of Clark Equipment Co. The 730 Series Bobcat is available with a gasoline or diesel engine and has a 1300-



pound operating capacity. At dump height, the models provide 4 inches more reach than the previous series. Different weight distribution results in better loader stability, bucket penetration, and steering control.

Write No. 708 on reader service card

**Shovels for general use** come with a 48-inch long handle or 40-inch D-top handle. Made by Ames from high-



strength poly, each Care-Free shovel is lightweight and has seven vertical ribs, non-stick blade, and rust- and scratch-proof finish.

Write No. 709 on reader service card

**A gelling agent** for containment and clean-up of liquid spills has been developed by United States Testing Company. Called SPILL/CLEAN, it is an

*Continues on page 96*

**PEOPLE  
BRIDGES**



2.20/Co IN SWEETS



Route 5, Box 178  
Alexandria, Minnesota 56308  
612-852-7500

Write 109 on reader service card

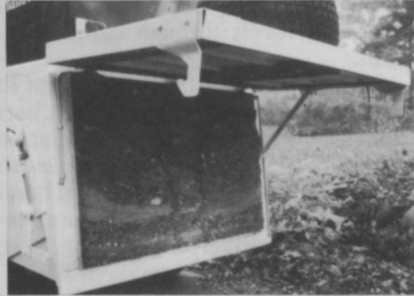
# New Trailblazer™ cleans up to 7¼ acres per hour Sweeps turf/hard surfaces

At last! A rugged all-terrain sweeper that can clean both your turf and hard-surfaced areas. Provides productivity undreamed of before. TENNANT® Trailblazer™ sweeps up to 3 acres of turf or 7 acres of hard surfaces an hour.

This tough, versatile sweeper combines the "lifting action" of a powerful vacuum with the "grabbing action" of a brush or paddle—to pick up paper litter, sand, cans, leaves, sticks, pine needles, even loose thatch. Has more pickup power than any turf machine. Cleans a 60" path



Cleans turf, hard surfaces. Climbs curbs to sweep hard-to-reach areas.



Pressure-packs debris to maximize hopper capacity.

(up to 92" with optional dual side brushes).

Climbs curbs—to clean hard-to-reach places. There's no faster way to sweep a variety of surfaces—turf, synthetics, concrete and asphalt—with a single machine. Its highly-efficient, ground-hugging sweeping is ideal for uneven surfaces too. Offers great maneuverability through articulated design. Solidly built—yet puts less PSI to the turf than lighter, less durable units.

A jet stream of air propels litter, pressure-packs it into the hopper.

Dumps its load at any point from ground level to 6 ft.—directly into containers or dump trucks. A 500 sq. ft. filter system provides nearly dust-free operation.

Optional cab enclosure and pressurizer for optimum operator comfort. Vacuum wand/blower available for cleaning along parking curbs, fences and other areas that might ordinarily require a separate specialized machine. Choice of gas or diesel engine. For a free, colorful brochure, write: Tennant Company, 701 N. Lilac Dr., P.O. Box 1452, Minneapolis, MN 55440.



Dumps from ground level to 6 ft.—directly into containers, dump trucks.

Write 159 on reader service card





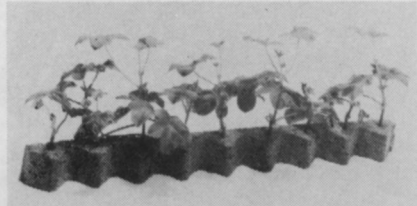
**Products** from page 94

organic powder which absorbs and solidifies most liquids, including polar and non-polar organics, halogenated hydrocarbons, organic and inorganic acids or bases, and aqueous solvents.

SPILL/CLEAN works without potentially dangerous chemical reaction. During the gelling process, it forms a sticky solid that can be applied to small ruptures for a temporary Band-Aid. The product is available in 25-pound fiber drums.

**Write No. 710 on reader service card**

**Potting units** called "Trans-plant" are for transplanting and shipping delicate seedlings without damage, shock, or



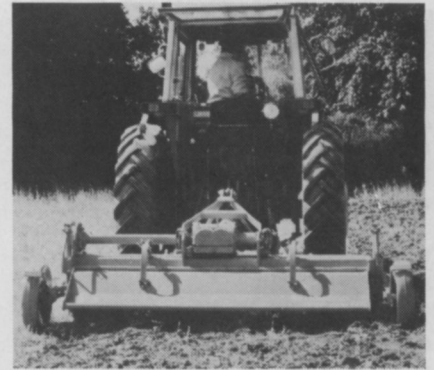
wilting. Trans-plant is a soil substitute made of a tested peat moss-vermiculite-nutrient mixture which is

bound into a sponge-like section of polyurethane foam. It consists of a pliable, three-dimensional network, in triangular shape, and provides air for root formation while maintaining proper moisture levels through capillary action.

A half-inch slot in the center of the unit allows insertion of cuttings, bare-root seedlings, or seeds. Transplanting is done by separating the triangles and planting them level with the soil line in the pot. This product comes from Tree, Inc., of Twin River Engineering.

**Write No. 711 on reader service card**

**A rotavator**, Howard Rotavator Co.'s Model HE is an improved version of the Model E. This one is available in five tillage widths from 50 to 90 inches. It is suitable for a wide range of primary and secondary tillage operations, including seedbed preparation, weed control, chopping and mixing crop residues, and inter-row cultivation. The new features include a double hull for extra strength and protection against damage, an improved topmast to protect the gearbox from shock loadings, and a parking stand which eliminates



tip-over risk during storage.

HE rotavators are designed for mounting to tractors in the 45-to-80 PTO horsepower range. Those in 50-, 60-, and 70-inch widths require a 540 rpm PTO speed, while the 80- and 90-inch sizes are recommended for 1,000 rpm PTO.

**Write No. 712 on reader service card**

**A data sheet** is available on the Hannay Series 1500 reels for lawn care service, pesticide spraying, steam cleaning, and wash-down operations. The Hannay 1500 reels handle 3/8-inch i.d.

*Continues on page 98*

# MEDALLION

**Wood Waste—  
Problem or  
Opportunity?**

Grind leaves, bark, chips or brush for fuel, compost, or just reduced volume.



525 15th Ave. So. • Hopkins, MN 55343  
Telephone (612) 938-6906

**Write 136 on reader service card**

## FELDMANN COMBINATION TILLER—AERATOR

- 18" rotary garden tiller digs deep for a finely tilled seed bed
- 15½" power lawn aerator penetrates turf, promotes thatch deterioration, allows water, air and fertilizer to reach grass roots for lush, green lawn
- Dependable chain drive powered by rugged, reliable 2-hp Briggs & Stratton engine
- Lightweight, easy handling; fold-down handle for compact storage and transportation

Model  
1815



### Feldmann

Engineering and Mfg. Co., Inc.  
Sheboygan Falls, WI 53085  
414/467-6167

**Write 119 on reader service card**

# An announcement of major importance to utilities and tree companies.

In tree growth control, time saved is money saved. Now you can increase your cost effectiveness and on-the-job efficiency by using Atrinal<sup>®</sup>, a new, injectable tree growth retardant that can extend your tree trimming cycle by one year or more.

After trimming, Atrinal solutions can be injected into the trunks of common broadleaf tree species such as sycamore, silver maple, eucalyptus, cottonwood, London plane, and water oak to provide effective, long-term growth retardation. Arborists will find Atrinal especially useful in maintaining utility rights-of-way, city streets, parks, and similar areas. Treatments can be made quickly with a pressurized injection system. And Atrinal tree injections also eliminate many problems associated with spraying.

Today, effective tree growth control demands a reliable product. Trust Atrinal as a practical means of reducing the frequency of manual trimming. To get all the facts, see your distributor or write—

Maag Agrochemicals Marketing,  
Hoffmann-La Roche Inc., Nutley, N.J. 07110

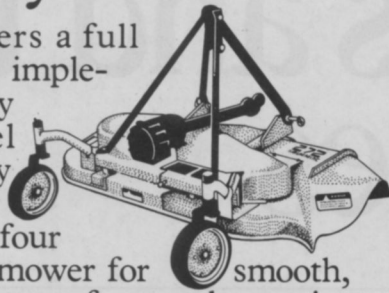


  
**Atrinal**  
FOR TREE INJECTION

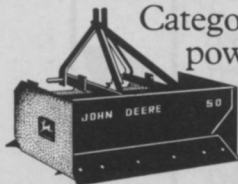


# Even if you don't own a John Deere tractor, you can still have John Deere behind you.

John Deere offers a full line of quality-built implements to fit nearly any make of small diesel tractor with a Category 1 3-point hitch. For example, there are four mowers: a grooming mower for smooth, even cuts; a rotary cutter for rough terrain; a flail mower for trashy conditions; and a sickle-bar mower for roadsides and hayfields.



For landscaping, John Deere has hitch-mounted implements including a rotary tiller, a box scraper, a rear blade and a post-hole digger. Of course, we also have a full line of hitch-mounted farm implements. So even if your tractor isn't green, you can make it do more when you put John Deere behind it.



For more information about John Deere Category 1 3-point hitch implements power-matched to small diesel tractors, see your John Deere dealer or send for a free leaflet.

To find out how John Deere implements can increase the versatility of your small diesel tractor with a Category 1 3-point hitch, send for a free descriptive folder. Mail this coupon to John Deere, Dept. B147, Moline, IL 61265.

Name \_\_\_\_\_  
 Address \_\_\_\_\_  
 City \_\_\_\_\_  
 State \_\_\_\_\_ Zip \_\_\_\_\_

WT

Nothing Runs Like a Deere®



Write 112 on reader service card

**SERIES 1500**  
 FOR 1/2 INCH AND 3/4 INCH I.D. HOSE

**CAPACITY:** Capacity chart showing hose length vs. reel diameter.

**REWIND:** Direct crank or chain and sprocket drive.

**INLET:** 1/2" or 3/4" NPT.

**OUTLET HOSE:** 1/2" or 3/4" NPT.

**HANNAY REELS**

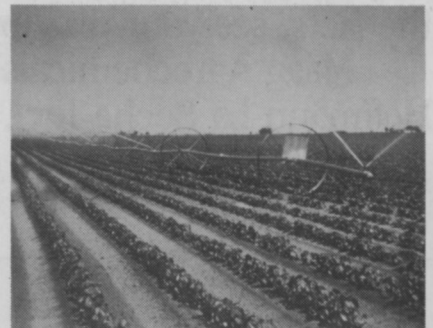
Hannay Reels for stream covering, washdown, herbicide, pesticides, herbicides. Choose your reel from the chart on the reverse side of this sheet.

hose up to 700 feet long or 1/2-inch i.d. hose up to 500 feet. The rewind mechanism is either a direct crank with the crank permanently attached to the reel axle, or a chain and sprocket drive powered by an electric or compressed air motor. An adjustable spring drag device brakes the reel.

The Series 1500 sheet provides information for matching reel to application. In easy-to-read chart form, it gives capacity, model number, dimensions, and weight of the five reel models.

Write No. 713 on reader service card

**Irrigation pipes** are flexible, lightweight conduits that make underground pipe mains for solid-set sprinkler or portable and semi-permanent



systems. These PIP-PVC pipes from Johns-Manville have 80 and 100 psi ratings, are large in diameter, and come in 20-foot laying lengths for flood, furrow, or drip irrigation systems.

Write No. 714 on reader service card