

MATERIALS

Thermoplastics favored over metals in report

In Europe, engineering thermoplastics can be expected to continue to take market share away from metals, despite oil price increases that would seem to hurt hydrocarbon-based plastics, according to a report by Frost & Sullivan, Inc.

The report says, "Steel, aluminum, zinc, copper, and most other metals are more energy expensive on a cost per unit volume basis than are plastics." The 286-page report, entitled "European Market for Engineering Thermoplastics," says, "The competition between engineering thermoplastics and zinc and aluminum diecastings has been won in almost all applications by plastics."

And it adds, "Pending legislation (to lessen automobile weight and improve safety) will also stimulate the use of more thermoplastics in automobiles."

Acid from fertilizers countered by lime

Almost everything man adds to and does to the soil, except applying lime, tends to make the soil acid. Any action that generates positive ions in the soil—tilling, growth of plants, and fertilizers—creates acidity.

The greatest cause of soil acidity is the use of ammonium-type fertilizers. Such fertilizers include animal manures, plant residues, organic nitrogen fertilizers, anhydrous ammonia, urea, ammonium sulfate, and half of the nitrogen in ammonium nitrate. This comes from both biological and chemical activity.

According to the National Limestone Institute, it requires about 3 pounds of limestone to neutralize the acidity formed by one pound of nitrogen. Because of the time required for lime to react and the difficulty of even spreading, the association suggests applying 5 pounds of limestone for each pound of ammonium nitrogen applied.



NOW PLANT
Husky Young TREES
AT
Wholesale Prices

Colorado Blue Spruce plus 26 other evergreen varieties; Black Walnut plus 28 other deciduous trees including many hardwoods. Ideal for forestation, windbreaks, wildlife shelter and food, soil conservation . . . increase property value. Low quantity prices.

Send for Free Catalog

VANS PINES INC.

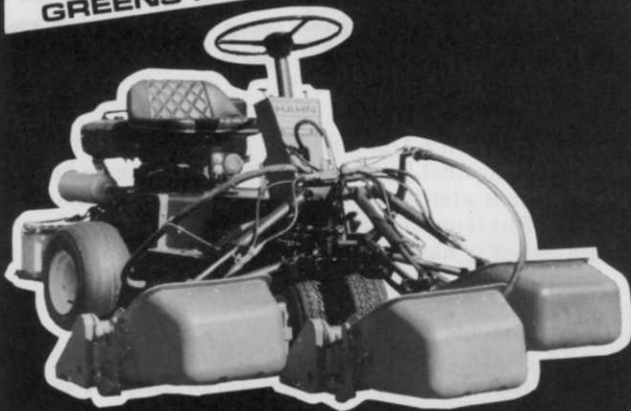
Box 768, West Olive, Mich. 49460

Phone 616-399-1620



Circle 160 on free information card

Hahn
GREENS MANAGEMENT SYSTEM



TOURNAMENT 1202 The precision Greensmower that converts in minutes to become a . . .

Verti-Cut® Thatcher

Vibra-Spiker®

Tee Mower



Get the complete greens management system or order units as you require.

Hahn

DEALERS WANTED

1625 N. Garvin St., Evansville, IN 47711 (812) 428-2025
Circle 113 on free information card

Herd BROADCASTERS

for the Commercial Operator and Homeowner

Spreads Fertilizer
Seeds, Salt, Sand
and Granular
Chemicals



GT-77
77 LB. CAP.
FOR GARDEN
TRACTORS



750 9.6 BU.,
750 LB. CAP.
FOR THE LARGER
BROADCASTING JOBS

Write for new colorful 8-page brochure on full line of 8 sizes and many variations to suit particular needs.

HERD SEEDER CO., INC., DEPT. 232
P. O. BOX 448, LOGANSPORT, IN 46947

Circle 163 on free information card

NEW DURSBAN LABELS CLEAR WAY FOR NATIVE ELM BARK BEETLE CONTROL

New labels for Dursban are providing a backup defense against Dutch elm disease in states where the native elm bark beetle is the primary vector. The Environmental Protection Agency has approved a national label for Dursban 2E and a Local Needs Registration for Dursban 4E in Minnesota where research on native elm bark beetle management has been centered.

"A good sanitation program, including debarking of all elm firelogs, is still the top priority," points out Bill Phillipson, extension entomologist at the University of Minnesota. "We're reaching the point, though, where cost and logistics in epidemic areas are making it very difficult to keep up with diseased tree removal and downed log disposal.

"In the Minneapolis-St. Paul-Bloomington area alone, estimates on diseased elms in 1979 range up around 77,000 trees. With present costs for labor and equipment, the price tag for removal and disposal will run in the neighborhood of \$30 million. We find we're in the same 'catch-up' situation with Dutch elm disease that other communities faced in the lower Midwest and East about 10 to 20 years ago."

The research has been conducted in several communities over the past several months by Phillipson and associates Mark Ascerno and Val Landwehr, under funding from the Minnesota Dept. of Agriculture Shade Tree Program. The product earlier was registered and has been used successfully in native elm bark beetle control programs in Canada.

DED in Minnesota

Dutch elm disease was first reported in Minnesota in 1961. As is typical of many infestations around the country, the disease had relatively little impact on elm populations for 12-14 years. Then DED multiplied rapidly.

"In the last five years, we've lost more than 20 times the number of elms killed in the first 14 years. The rate will continue to escalate unless comprehensive management programs are implemented," explains Phillipson.

"Costs for tree removal are essentially unavoidable. If communities do nothing to slow down the spread of Dutch elm disease, they will still have to remove dead and dying trees to keep them from falling across power lines, into houses, over traffic routes and so forth. We're looking at practical ways to disperse these removal costs over several years."

From a total elm population of about 5 million trees, the Twin Cities seven-county metropolitan area still has 4,500,000 that are disease-free, according to Phillipson. If DED is allowed to progress at its normal logarithmic rate, virtually all elms in that area will be destroyed over the next 10 years.

With today's cost of tree removal averaging nearly \$400 apiece, the expense would add up to a staggering \$1.8 billion. This does not take into ac-

count the aesthetic impact on communities, depreciation in home values due to loss of the majestic shade trees, or damage losses attributed to falling limbs and trees.

Two insects serve as elm fungus disease carriers—the smaller European and the native elm bark beetle. Both reproduce during the summer months in downed elm logs or diseased trees, which points up the importance of sanitation programs to deprive both insects of egg-laying sites, as well as to reduce the natural reservoir of disease fungus.

In some parts of the country, European elm bark beetles are the prevalent species. In Minnesota, however, native beetles far outnumber the European.

"In the northern two-thirds of Minnesota, the native beetle is the main and, in many instances, the exclusive carrier of Dutch elm disease," says Phillipson. "In the southern third, the native is an important carrier along with the European beetle."

Insect studies indicate that only two or three percent of the overwintering European beetles are likely to be carrying the disease fungus. "In our studies, about 30 percent of the overwintering European beetles carried the fungus. It only takes one beetle to infect a tree."

Both insects do most of their damage in the spring when they emerge from overwintering sites. Natives emerge first, starting around mid-April or early May, and fly into larger branches of healthy elms to feed. Trees are particularly vulnerable at this time, when new growth is being added and rapid transmission of the fungus can occur.

European beetles emerge about a month later and feed on smaller twigs and branches. Disease fungus introduced at this time usually spreads more slowly through the tree. If disease symptoms—leaf wilt and brown discoloration in twig cross-section—are detected early enough, it may be possible to save most of the tree by cutting out the infected branches.

A key to stopping native beetles was discovered in a "weak link" in its life cycle, which makes it much more susceptible to insecticide treatment than is the European. Native beetles overwinter as adults in the bark along the lower trunk of healthy elms. European beetles seek out downed trees and logs, overwintering in the larval form.

"By treating the bases of healthy elms with Dursban, we've destroyed over 97 percent of the native beetles overwintering there," notes Phillipson. "In addition to its effectiveness, another important advantage is that it doesn't repel the insects. The beetles do not avoid treated elms even when there are untreated trees nearby."

Application guidelines

Two formulations of the chlorpyrifos-based insecticide are registered for use in Minnesota—Dursban 2E and Dursban 4E. Application rate is .5 percent active ingredient solution with

water, sprayed to wet (not run-off) the basal 2-2½ meters (6-8 feet) of standing healthy elm trees (one gallon of 2E in 45 gallons of water equals .5 percent; enough for approximately 90 trees).

The entomologists do not recommend that this management technique be left to individual homeowners, because effective control of beetle populations must be handled on a communitywide basis. At present, trained municipal employees and licensed pest control operators represent most of the qualified applicators. The Minnesota SLN 24c label must be in the possession of the user at time of application.

"The best time for application is late August to mid-September," adds Phillipsen. "This would be just before native beetles start their search for overwintering sites. Extra care should be devoted to the basal six inches of the tree, including root flare. Young elms (up to 8 inches in diameter) and thin-barked elms are especially vulnerable to the beetles."

Fall treatment is preferred because beetles can introduce the fungus directly into healthy trees as they make their overwintering tunnels. The "bot-

tom up" disease symptoms are similar to those associated with root graft transfer of DED from infected to healthy elms. Spring treatments also can be effective by destroying beetles as they emerge to begin their feeding and reproductive cycle. The research team has monitored Dursban insecticide effectiveness for more than nine months, so a repeat treatment in the fall should not be needed where spring applications are made.

"Tree spray programs we've outlined will normally be conducted early enough in the spring and late enough in the fall that they won't conflict with most of the ongoing sanitation projects," explains Phillipsen. "From this standpoint, communities will be able to utilize their available manpower and equipment without a lot of additional expense."

"The cost of insecticide will run about 25 cents a tree, assuming an average 33-inch-diameter trunk. Most communities already have low-pressure sprayers and water tanks that are used in present weed and insect control programs, which can be used for these applications as well."

Continues on page 94

This magazine gives you good reading, good writing and good arithmetic.

BPA. For readers it stands for meaningful information.
For advertisers it stands for meaningful readers. Business
Publications Audit of Circulation, Inc.
360 Park Ave. So., New York, NY 10010.



We make sure you get what you pay for.

HI-RANGER®



PRODUCTIVE

Proven by owners for line clearing efficiency, and preferred by operators for precise tower control and bucket positioning. HI-RANGERS are No. 1 in utility and contractor preference for insulated aerial man-lifts. Patented HI-RANGER "3D" one-hand control, hydraulic tool line options, chip boxes, and other features may benefit your operations. Write for "4F-5F CATALOG".

Hi-Ranger aerial towers meet the "American National Standard for Vehicle-Mounted Elevating and Rotating Aerial Devices ANSI A92.2-1979."

SINCE 1950

HI-RANGER



MOBILE AERIAL TOWERS, INC./Dept. N/2314 BOWSER AVE./FORT WAYNE, IND. 46803

Circle 156 on free information card

Windmill

backpack blower

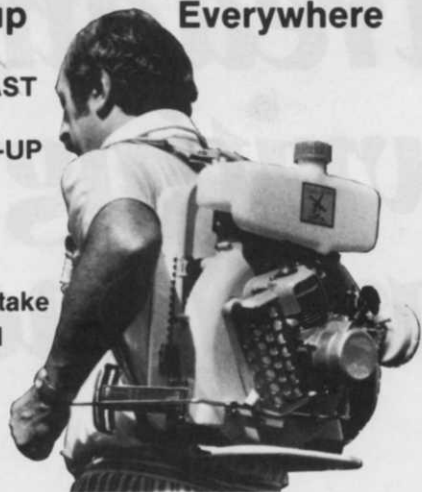
The Directional Airblast That Cleans-up Everywhere

**POWERFUL
225 MPH AIRBLAST**

**FULL SERVICE
& PARTS BACK-UP**

**180 DAYS
WARRANTY**

**SPECIAL
FEATURES:**
clog-proof air intake
no-stall fuel feed
instant airblast
control with
solid throttle
linkage



Whatever the clean-up job, the WINDMILL 55 Blower does it better and faster.

Write today to:

VANDERMOLEN CORP.

119 Dorsa Ave. — Livingston, NJ 07039



Circle 155 on free information card

Elm from page 93

Alternative methods

Essentially all U.S. elms are susceptible to Dutch elm disease. In northern states, approximately 95 percent are American (white) elms, with the remainder made up of red elm and rock elm species. A few foreign species, including the Chinese and Siberian elms, are fairly resistant to Dutch elm disease. Some have suggested importing these to replace native elms that have been lost to DED.

"We're not recommending this because they would serve as reservoir hosts for the disease, making it even more difficult to slow the destruction of our native elms," says Phillipsen. "They have other drawbacks, too. They're fast-growing, but brittle, so they tend to lose their branches. And they don't have the shape and structure of the American elm."

What about pheromone projects?

"The pheromone-trap method may show some promise in wild areas with only European beetle populations, but we haven't discovered a similar sex attractant that works with native beetles," replies Phillipsen. "We consider pheromone traps, at this point, to be a valuable monitoring tool for European beetle infestations."

As for a large-scale program based on pheromone use, there are disadvantages. By attracting a large number of beetles to a certain area, again a reservoir of fungus and beetles will probably build up. And there's the problem of isolating the treatment area. The best results obtained in recent tests indicate at least 3 to 13 percent of the beetles will still escape this method."

A great deal of research also has been focused on methods of combatting the DED fungus itself, instead of concentrating on the insect carriers. Are any of these being utilized on a significant basis?

"A variety of both chemical and biological agents have been tested as tree inoculants, usually under strictly controlled environmental conditions," says Phillipsen. "In a few instances, they've given good results. So far, however, there is nothing that has proved consistently effective in controlling the disease fungus in field applications."

"Translocation of any substance throughout the tree is extremely unpredictable, depending on environmental factors like moisture and temperature, plus size, age, photosynthetic activity and other plant physiological conditions. The interrelationships are very complex."

"Probably the greatest drawback, though, is cost. Most of these methods require specialized equipment and take more time. We feel our efforts should be directed primarily at aggressive sanitation programs to stop the disease carriers. And, since the native elm bark beetle essentially bypasses sanitation programs in its overwintering habits, we believe the insecticide spray method can prove to be a valuable augment to sanitation."

Dursban is a product of Dow Chemical Co., Midland, MI.

Free Climbing Rope worth \$57.

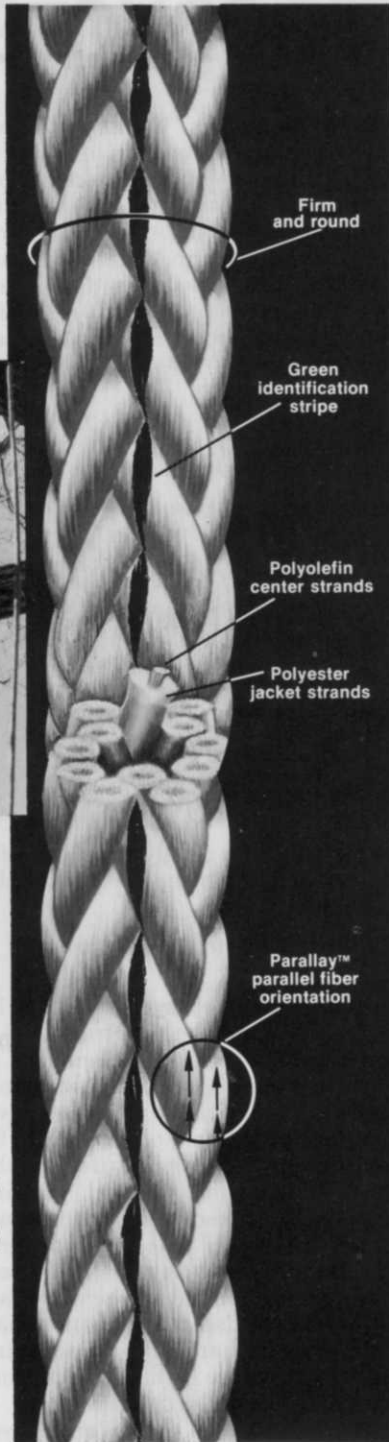
**New, stronger
more durable
climbing, bull rope,
Arbor-Plex™**



Arborplex™ 12-Strand... a new Samson rope designed to replace manila for climbing and bull rope. Arborplex has been extensively evaluated in the field and has proven itself with these advantages.

- Twice the strength of manila
- New Duron™ II polyester for more durability
- Firm "nubby" surface for good grip
- Stays flexible, throws well
- Good knot holding
- Resists chemicals and UV, won't mildew

Arbor-Plex is now available through Samson Distributors. Send for descriptive literature and name of local source. Samson, Dept. AP, 99 High Street, Boston, MA. 02110



How to take advantage of this offer:

- 1 Select a Bull Line
- 2 Make out a check payable to Samson for the amount of the Bull Rope
- 3 Fill out your shipping address
- 4 Take or send your completed form, including check, to your usual Arborist Supply Dealer.
- 5 Dealer will then forward check and form to Samson for redemption
- 6 Your Bull and Free Climbing Rope will be shipped direct from our factory.

Offer Expires June 1, 1980

Check one Bull Rope:

<input type="checkbox"/> 5/8" × 100 FT.	\$ 81.
<input type="checkbox"/> 5/8" × 120 FT.	\$ 91.
<input type="checkbox"/> 5/8" × 150 FT.	\$105.
<input type="checkbox"/> 5/8" × 600 FT.	\$302.
<input type="checkbox"/> 3/4" × 100 FT.	\$ 98.
<input type="checkbox"/> 3/4" × 120 FT.	\$111.
<input type="checkbox"/> 3/4" × 150 FT.	\$130.
<input type="checkbox"/> 3/4" × 600 FT.	\$395.
<input type="checkbox"/> 7/8" × 600 FT.	\$572.

SIZE	STRENGTHS
1/2"	5000 LBS
5/8"	9000 LBS
3/4"	12,000 LBS
7/8"	17,500 LBS



Arbor-Plex™

Dealer Note:
For further information and immediate response on the "Tree-Up" Program, call Samson collect (617) 426-6550.

Fill out and take coupon to your Dealer. Buy 1 Arbor-Plex Bull Rope and get 1/2" × 150 ft. Climbing Rope FREE! Make check payable to Samson.

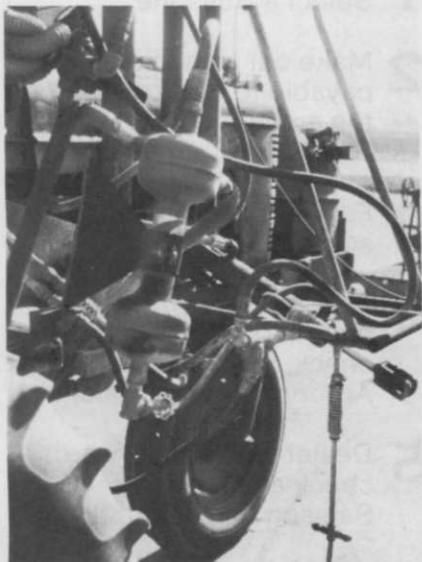
name _____
address _____
city _____ state _____ zip _____
occupation _____ telephone _____

Dealers Imprint _____ Rope purchased: _____
size _____
Offer Expires June 1, 1980

Look for our "Tree-Up" Displays in your Arborist Supply Center.

PRODUCTS

Lakos Separators made by the Claude Laval Corp. keep sand and grit from clogging and abrading spray rig nozzles. They can remove



98 percent of all particles as small as 200 mesh from their source water for mixing with chemicals. Only maintenance required is an occasional purge of the solids collection chamber.

Circle 701 on free information card

Hahn, Inc. has introduced a self-propelled, all-purpose sprayer, the Spray-Pro. It has a 16-horsepower engine, 3-speed transmission and 160-gallon poly tank. Standard



sprayer has a centrifugal pump and 16-foot boom. High flotation tires assure little turf loading. Optional features include hand gun kit, 22-foot boom, and high pressure pump kit.

Circle 704 on free information card

A protective hood houses the entire application system of the Kleco drip-proof sprayer made by Buffalo Turbine AG Sales of Texas. This control system works for insecticides, herbi-

cides, fungicides, liquid fertilizers, soil sterilants, and lawn dyes. It helps eliminate chemical drift due to wind and upward movements; protect operator from contact with spray regardless of wind direction; and reduce both stream contamination and the cost of spraying by requiring only the minimum application recommended by chemical manufacturers.

Reliable PTO-driven pump and other parts provide little maintenance problems. It will convert from



three-point to dragtype hitch with gas-inversion power for practically all towing systems.

Circle 703 on free information card

A mobile boom sprayer, the Mark III Spray-Hawk, eliminates all guesswork in applying chemicals to turf. It provides easy, fast spraying; accurate, uniform applications; and positive protection of fine turf. By coordinating the pressure of the sprayer with his natural walking speed, operator can apply the exact amount of turf chemical recommended. You can spray at the exact rates recommended by the manufacturer in a precise, uniform spray pattern to avoid harmful over-spraying and obtain more efficient and economical use of spray chemicals.

Spray-Hawk is lightweight, yet sturdily built with a stainless steel boom for long life. It has a positive on-off spray with easy-to-use pistol grip control. No-drip nozzles automatically close when pressure falls below 3 psi.

Circle 702 on free information card

Jumbo Sack semi-bulk container cuts losses and damages of changing bags in handling. There is no need to slit or seal bags, a major cause of contamination. Jumbo Sack, which

safely contains 3,300 pounds, comes from Marino Systems, Inc.

Circle 708 on free information card

Fault and cable locator by TelComm Products Div. of 3M is designed to help solve most underground sprinkler system control cable problems.



The device locates cables and gauges their depth. Then any damaged section can be found by following the cable and watching the meter.

Circle 705 on free information card

The WS-480 Grounds Wheelie manufactured by Wheel Spray Corp. is a liquid chemical spreader with a ground-driven pumping system. It is motorless and does not require gasoline, batteries, cords, or water hoses. It applies liquid fertilizers, fungicides, herbicides, insecticides, and growth regulators. The twin wheel pumps spray a fan of solution 6 feet wide at 1,000 square feet per gallon. Coverage is relatively unchanged by the speed at which the sprayer is pushed; the faster it is pushed, the faster it pumps.

The pumping system and the 6-gallon container are made of corrosive-resistant materials. The spray comes from two nozzles in the form of tiny droplets providing a steady uniform application which greatly reduces costly chemical

Now! Ross brings you 3 for all... all the trees and shrubs you have!

Because ROSS knows specifically what's
good for your trees,
you can stake your reputation on them.

	<ul style="list-style-type: none"> Ash Elm Oak Maple Ginko Linden Redbud Hawthorn Sweet Gum Honey Locust Poplar Horse Chestnut Dogwood Beech 		<ul style="list-style-type: none"> Apple Apricot Pear Peach Plum Cherry Orange Lemon Lime Grapefruit Raspberries Pecan Walnut Blueberry 		<ul style="list-style-type: none"> American Holly Blue Spruce Boxwood Fir Pine Pfitzer Cypress Scotch Pine Juniper Rhododendron Mountain Laurel Yew Cedar Euonymus
---	--	---	---	--	--

ROSS Super Tree & Shrub Stakes

16-10-9
A high food value
combination, plus
iron and zinc.

ROSS Super Fruit Tree Stakes

16-5-10
For bigger, better fruit,
pre-measured feeding with
iron and zinc booster.

ROSS Special Evergreen Tree Stakes

8-8-8
For Evergreens, Camellias, and
Rhododendrons. A special balanced
formula plus sulphur, iron and zinc.

Now 3 great once-a-year Ross Formulas for all your trees and shrubs in economical, commercial bulk packs. Each commercial case contains approximately 155 stakes. That's enough to feed more than 35 trees of 3" diameter. 20 solid nylon pounding caps are included in each case... they simplify driving stakes into the toughest soils. For best results, use 3 stakes for every 2" of trunk diameter, placing them at the drip line.

Order your Ross tree stakes from your Ross Daniels distributor. If they are unavailable in your area, order direct.

ROSS DANIELS, Inc.

P.O. Box 430, West Des Moines, Iowa 50265

Circle 145 on free information card

ROSS DANIELS, INC., P.O. Box 430, West Des Moines, Iowa 50265
Gentlemen: Please ship the following order to me, based on this information:

PRICES: 1 to 3 cases, \$35.00 per case
4 to 11 cases, \$30.00 per case
12 to 25 cases, \$25.00 per case
25 or more cases, \$22.50 per case

WEIGHT: Each case weighs 44 lbs.
NOTE: There are approx. 155
stakes per case. 20 nylon
caps included in each case.

Stock No.	Description	No. of Cases	Price Per Case	Totals
1791	Super TREE STAKES	@	\$	\$
1812	FRUIT TREE STAKES	@	\$	\$
1775	EVERGREEN High Acid STAKES	@	\$	\$
TOTAL ORDER \$				

Your Name _____
Organization _____
Address _____
City _____ State _____ Zip _____
Make check payable to Ross Daniels, Inc.

Kawasaki



Budget stretcher.

New equipment is great. But today, tight budgets call for getting the longest life from all your equipment. That's where heavy duty Kawasaki engines can help you stretch your budget.

Specify Kawasaki engines on new equipment—or to replace worn out power plants on equipment you own. You get easy starting engines that run smooth.

They've got the torque and horsepower to give new life to old equipment. They've got solid value features such as cast iron cylinder walls, stellite exhaust valve faces, heavy duty shafts and ball bearings on both ends of crankshaft and camshaft, just to

name a few. And they run on regular or unleaded fuel.

Look into stretching your budget with reliable, durable replacement engines from Kawasaki. 4 cycle from 2.3 to 20 hp. 2 cycle available. Parts and service available through the Kawasaki distributor-dealer network. Get all the facts for yourself. Send for details today.

The Power to turn People on.

Kawasaki

650 Valley Park Drive, Shakopee, MN 55379

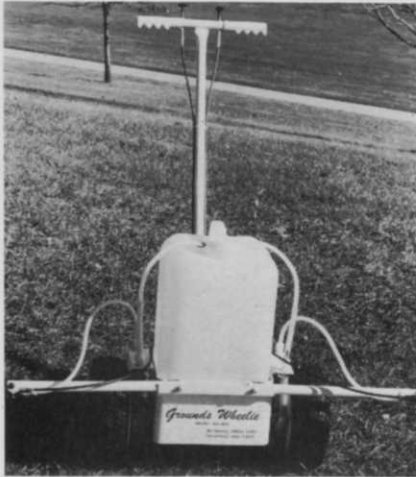
Phone: (612) 445-6060

Circle 112 on free information card

Products

from page 96

drifting. The frame is fabricated of heavy gauge steel with shut-offs



located on the handle grips.

Circle 706 on free information card

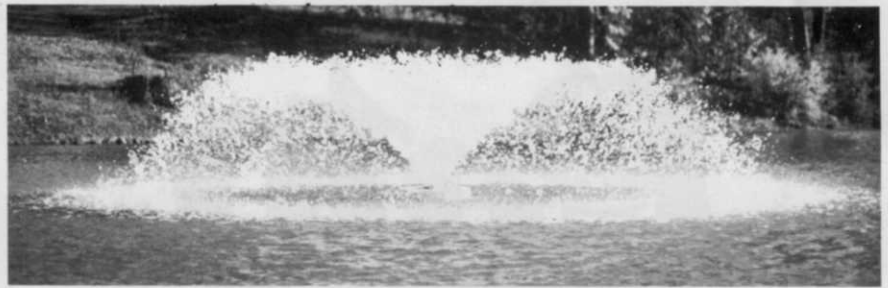
Hydra-Mac, Inc. has introduced model 14C skid steer loader with a 43-horsepower diesel engine and a 1,475 pound operating lift capacity. A dual section gear pump charges the hydrostatic and hydraulic systems.



Front protector gate locks the lift arm in "up" position should operator attempt to dismount the loader with arms in the raised position. The loader also features hydraulically self leveling bucket, operator comfort, and variable capacity radiator which allows for additional cooling elements for operation in high temperatures.

Circle 707 on free information card

A 12-foot rotary hoe, Model 3412, shatters crusty soil, kills weeds, and aerates soil so chemicals are quickly incorporated into the ground. Sixteen spoon-billed, self-sharpening teeth are riveted to each of the 42 21-inch wheels. The wheels turn on sealed ball bearings. Each wheel is suspended on an independent spring



OTTERBINE Spray Sculpture Floating Fountains. Now you can clean up ponds and lakes naturally.

These self-contained water quality improvement systems help you keep unsightly algal growth and objectionable odors under control naturally, without costly chemicals.

And their sparkling spray displays may dramatically change the natural beauty of your ponds and lakes.

For the Otterbine dealer in your area contact:

Rodale Resources Inc.

576 North St., Emmaus, PA 18049 • 1-215-965-6990

Circle 175 on free information card

HYDRO-MULCHER

Dollar for Dollar where quality, performance, and durability count

you can't beat a
Bowie
Hydro-Mulcher



The revolutionary machine for the turf industry that seeds or sprigs, fertilizes, waters, sprays and mulches in one easy operation . . . a totally new method of lawn, turf and ground cover application, plus faster, more effective erosion control.

EXCLUSIVE FEATURES

- Only proven unit for both sprigging and seeding with cellulose fiber mulches.
- Equipped with enclosed shredder bar for shredding full bales of cellulose fibers.
- Centralized tower control with no hoses.
- Equipped with tripple agitators for faster mixing and eliminating sediment build-up.
- Uses pump only for spraying, so pump lasts longer.
- Slurry passes through pump only once, thus reducing seed damage and clogging.

BOWIE INDUSTRIES, INC.

P. O. Box 931 Bowie, Texas 76230 (817) 872-2286

Circle 104 on free information card

Pinto BRAND

WILD FLOWER MIX for NATURAL BEAUTY with LOW MAINTENANCE

Pinto Wild Flower Mix . . . the easy way to beautify any landscape. A blend of wildflowers like Bachelor's Button, Painted Daisy, Foxglove and Black-eyed Susan. A combination of annuals and perennials that requires no mowing . . . and it reseeds itself annually for a lush stand of colorful wildflowers.

Pinto Wild Flower Mix can be used anywhere . . . highways, private homes, waste areas, parks and non-playing areas on golf courses. It's a natural solution for areas that are difficult to mow. And it can be applied with a hydroseeder.

To beautify any area, try Pinto Wild Flower Mix . . . available either as wild flowers only, or mixed with sheep fescue to aid soil stabilization.

Available in 1-acre bags of 4 lbs. (wild flower seeds only) or 30-lb. bags (wild flower/fescue mix).

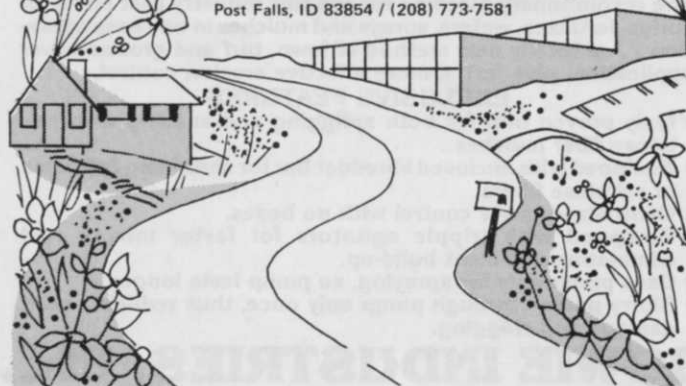
Pinto is also available in reclamation grass seed mixtures, formulated for hard-to-establish, minimal-maintenance areas.



**Lofts
Pedigreed Seed, Inc.**
Bound Brook, N.J. 08805 / (201) 356-8700

Jacklin Seed Company

Post Falls, ID 83854 / (208) 773-7581

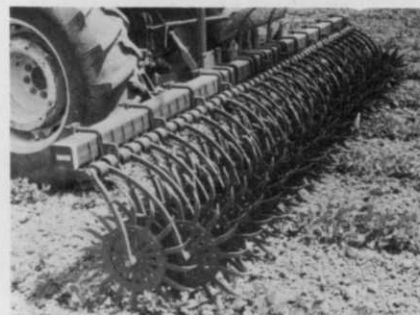


Circle 179 on free information card

Products

from page 99

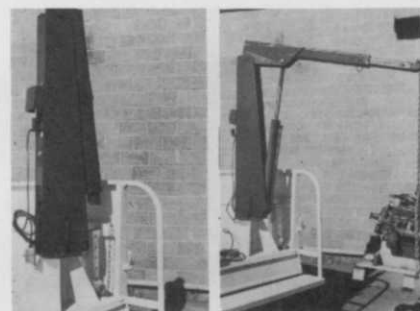
cushioned arm that rises and falls following ground contours and over heavy rocks or other obstructions. The hoe cultivates 30- or 40-inch



rows without adjustment. Its 3-point hitch matches category II, III, and most quick couplers. A safety shield offers operator protection. Yetter Manufacturing Co. makes it.

Circle 709 on free information card

The EH-4 truck crane, an electric/hydraulic model, for use on one ton and heavier trucks, holds 4,000 pounds yet weighs only 350 pounds. A manual extension reaches an additional 15 inches from its max-



imum vertical reach of over 11 feet. The crane stands 64 inches high above the truck bed in the stowed position. The truck's electrical system powers it and a double acting hydraulic cylinder provides both power up and power down to the boom. GS Industries, Inc. makes the crane.

Circle 710 on free information card

Variable length auger extensions from the McMillen Div. of States Engineering Corp. are available to adapt McMillen 6 through 36-inch-diameter augers to most other hydraulic digging heads. They come in two sizes, 24 and 48 inches, both designed to be stored inside the auger shaft, adding 6 inches to the digging depth of the auger. The 24-