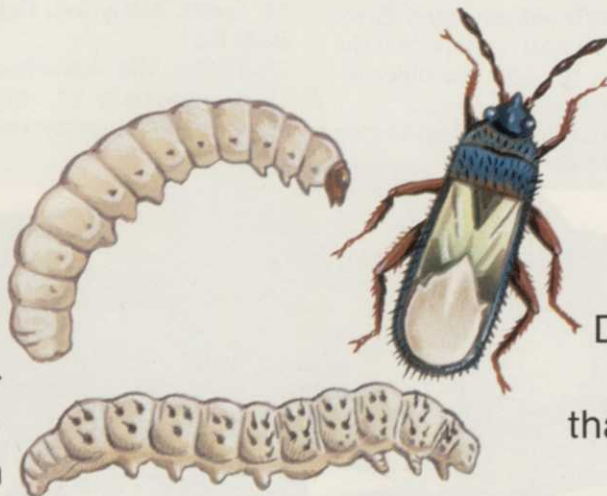


HIRE THE INSECTICIDE THAT LIKES TO WORK OVERTIME.

DURSBAN* brand insecticides provide unsurpassed residual control of cutworms, chinch bugs, sod webworms, and a dozen other turf pests. Both DURSBAN 2E Insecticide and double-strength DURSBAN 4E Insecticide keep working a lot longer than other turf insecticides. This residual action saves you time, trips, and labor. It also saves you money. In fact,



DURSBAN insecticides cost less than most other turf insecticides.

Ask your supplier for the turf insecticide that works over-



time for you. Get DURSBAN 2E Insecticide or double-strength DURSBAN 4E Insecticide. Just be sure to read and follow all label directions and precautions. Agricultural Products Department, Midland, Michigan 48640.

*Trademark of The Dow Chemical Company



DOW CHEMICAL U.S.A.

Handicap? None. We Build Them For Pros

When there's a course to be kept you need the most impeccably designed, most ruggedly built equipment on the market.

Maruyama. Working, day after dependable day in over 70 countries, worldwide.

See us at the upcoming GCSAA in St. Louis and the Mid America Show in Columbus.

Marvel at Maruyama's SSA C-420 self-propelled Power Tree Sprayer. Take an easy ride to hard profits. See the versatility of the MS 253 Portable Sprayer. Shoulder the lightweight MS 070 Back Pack Sprayer.

Ask about the entire Maruyama line. You'll understand what 80 years of solid experience can create.

Maruyama. A professional line so dependable, so sophisticated we'll reduce your handicap to zero. We build machines for pros.

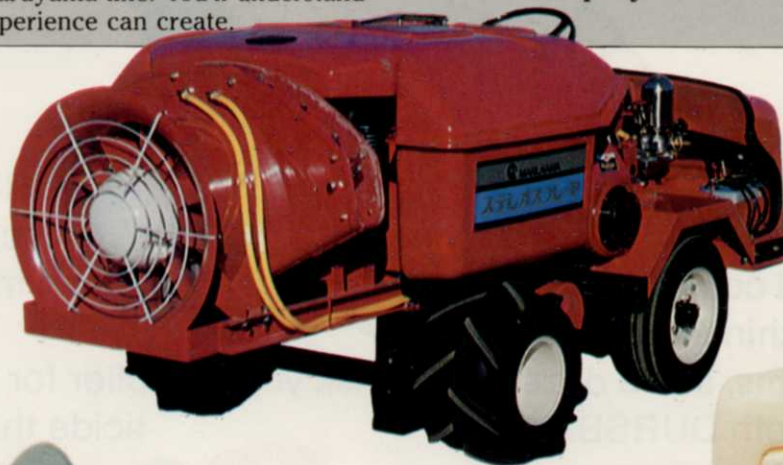
See the Maruyama Line

GCSAA 51st International Turfgrass Conference and Show,

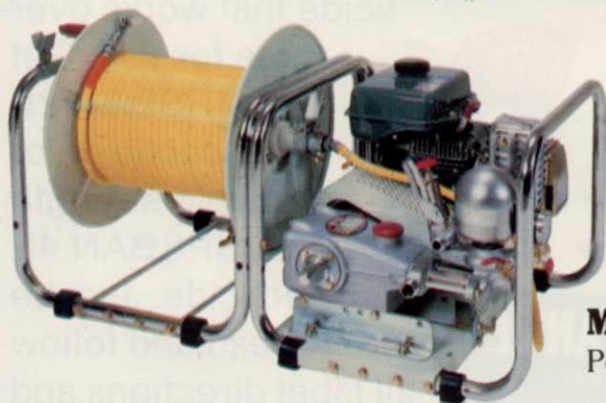
St. Louis, Missouri, February 19, 20, and 21, Booths 933/934.

The 1980 Mid America Show, Columbus, Ohio, February 24 and 25, at the Van Atta Seed Company booth.

Make Maruyama a MUST stop at the show. Dealer inquiries invited.



SSA C-420
Power Sprayer



MS 253
Portable Sprayer



MS 070
Back Pack
Sprayer



MARUYAMATM

**For 80 years we've built
Products for Professionals, Progress, and Profits.**

For more information call (714) 745-0669 or write:
Maruyama, 2361 Vineyard, Escondido, CA 92025

Products from page 88

grading. A 27-horsepower, water-cooled engine and six speed forward



all-gear transmission power the tractor.

Circle 702 on free information card

The three-wheel Front Line mower from OMC-Lincoln makes uniform cuts with three separate blades adjustable to eight positions, from 1 to 4½ inches. Designed for maintenance contractors and lawn care ex-

perts, the mower carries a 72-inch cutting deck which extends more than a foot to one side for close trimming along fence lines or around trees. The blades—25 inches long, 2½ inches wide, and 3/16 inch thick—overlap 1½ inches to assure even cutting.

The cutting deck is constructed of 12-gauge carbon steel and reinforced



and arc welded to withstand difficult cutting jobs. It lifts hydraulically to clear curbs. A Cushman 18-horsepower twin, air-cooled, four-

cycle engine powers the mower to keep blade speed high, even through tall weeds and grass. Hydrostatic transmission and multi-disc PTO clutch makes it easy to operate. A rocking pedal enables the operator to move the mower into forward speeds of up to 7.7 mph and reverse speeds of 4 mph.

The mower has direct drive to the deck gear box and features a sealed and lubricated telescopic drive shaft for durability. It also has individual wheel brakes for tighter turns and better control on various terrain, and an integral brake locking system for use during transport. Rear-wheel steering enhances maneuverability.

Circle 701 on free information card

A 21-horsepower engine, model KT21, from Kohler Co. powers a variety of equipment—lawn and garden, construction, and agricultural. The air-cooled, four-cycle, twin-cylinder engine has demountable

TOTAL DEPENDABILITY



... with the intermediate line of Bob Cat. Some mowers are built to meet a price. Bob Cat mowers are built to meet the rugged durability you demand. Whether you want the walk-behind or riding sulky intermediate, you'll be dollars ahead with the *total dependability* from a Bob Cat. Check the benefits of Bob Cat's dependability for yourself.

Get
The Best...
Get A

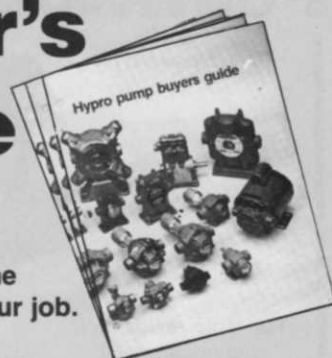


WISCONSIN MARINE, INC.
1 Bob-Cat Lane,
Johnson Creek, WI 53038

[414] 699-2000

Circle 108 on free information card

Free Pump Buyer's Guide



Things you need to know to pick the right pump for your job.

The new Hypro Pump Buyer's Guide shows you how to select the pump that's right for your application. Page after page of helpful information on all the Hypro pumps, accessories and applications. Performance charts, dimensions, plus a handy service/selection guide to help you make the right choice. And it's free from Hypro. Send for yours today.

Bring your pump problems to a pro-Hypro.



A DIVISION OF LEAR SIEGLER, INC.
347 Fifth Ave NW, St. Paul, MN 55112 • (612) 633-9300

Circle 134 on free information card

PEOPLE BRIDGES



2.20/Co IN SWEETS



Route 5, Box 178
Alexandria, Minnesota 56308
612-852-7500

Circle 137 on free information card

Products from page 93

cast iron cylinder barrels on an aluminum crankcase. Crankshafts are made of forged steel and camshafts of durable cast iron.

Combustion air is drawn from within the cooling fan housing,



reducing air intake noise. The engine is designed for easy installation in an enclosure to further reduce noise. Breaker points, condenser, spark plugs, oil fill, dipstick, air cleaner, and carburetor are easily accessible

for service.

Circle 714 on free information card

Bush Hog 2400 QT and 3400 QT front end loaders fit many tractor makes and models. Designed to mount or dismount in four minutes, they attach to compact mounting brackets that remain out of the way in normal tractor operation or maintenance. The 2400 QT loader fits 35- to 75-horsepower tractors. It has a lifting capacity of 2,400 pounds and breakaway capacity of 3,340 pounds. Features include a standard level indicator, single frame cross member for good visibility, regreasable pivot points for long life, and tubular hydraulic system.

The 3400 QT loader (shown) fits 80- to 120-horsepower tractors. Its lifting capacity is 3,500 pounds and breakaway capacity 5,000 pounds. Features include rust-resistant, chromeplated, high-tensile steel cylinder rods and V-type piston packing that withstands weather.

Circle 705 on free information card

KEES 48"

HEAVY-DUTY

POWERMOW

Model 481100



For large residential and commercial grounds use.

CHECK THESE PERFORMANCE FEATURES:

- Powerful 11 h.p. Briggs & Stratton synchro-balanced engine
- Fingertip clutch, brake and power turning control levers on each handle
- Sleek deck design and drum wheel brakes for positive, close quarter mowing
- Unique V-flanged front deflectors help prevent damage to yard decorations, monuments, etc.
- Baffled design for clean and safe grass discharge. OPTIONS: Riding sulky and metal grass catcher.



For more information, write P.O. Box 943 or phone (402) 223-2391.
Since 1874

F. D. KEES MFG. CO. Beatrice, Nebr. 68310

Circle 169 on free information card

NEW ACECAP™

SYSTEMIC INSECTICIDE IMPLANTS

ACECAPS are the modern way to control insect pests "in" ornamental trees. No need for expensive spray equipment; no danger of spray drift or runoff; and eliminates measuring and mixing of chemicals. Simply drill the tiny implant sites, insert the ACECAPS, and forget them. The insecticide will be translocated throughout the tree, killing targeted insects and providing continued protection. There is no need to return and remove applicators — the ACECAP Implants are left inside the tree where callous tissue will cover them in a short time.

ACECAPS contain ORTHENE® — a new generation insecticide which combines highly effective, broad spectrum insect control with a reduced hazard to humans, wildlife and the environment.

ACECAPS Systemic Insecticide Implants offer the ultimate in an environmentally acceptable insect control program. Any pesticide can be harmful if misused; **READ AND CAREFULLY FOLLOW LABEL DIRECTIONS.**

TREE SYSTEMS®

MEDICAP

SYSTEMIC TREE CARE

ACECAP™ Copyright, 1979 Creative Sales, Inc.
MEDICAP Registered Trademark, Creative Sales, Inc.
(ORTHENE is the registered trademark of Chevron Chemical Company for acephate insecticide)

CSI creative sales inc.

222 Park Ave. • Fremont, NE 68025

Circle 159 on tree information card

CLASSIFIEDS

When answering ads where box number only is given, please address as follows: Box number, c/o Weeds Trees and Turf, Dorothy Lowe, Box 6951, Cleveland, Ohio 44101.

Rates: All classifications 65¢ per word. Box number, \$1. All classified ads must be received by Publisher the 5th of the month preceding publication date and be accompanied by cash or money order covering full payment. Mail ad copy to: Dorothy Lowe, Weeds, Trees & Turf, P.O. Box 6951, Cleveland, Ohio 44101.

POSITION WANTED

EXPERIENCED AND EDUCATED turfgrass manager and forester desires position with state, county, or municipal government park and/or golf course in mid to far west. BS in Forestry and certified in Turfgrass. 3 years as assistant superintendent of a golf course. 2 years as sod farm manager. Resume upon request. Write Box 237, Weeds, Trees & Turf, Box 6951, Cleveland, Ohio 44101.

CAREER-ORIENTED MAN, 25, excellent educational and professional background, seeks opportunity with progressive, quality-oriented organization. Extensive background in Woody Ornamentals, Plant Pathology, Landscape Maintenance, and Retail Management. A.S. Ornamental Horticulture, Temple University 1978, B.S., Penn State, Feb. 1980. Proven leadership abilities. Contact: Joseph M. Ascenzi, 677 Jackson Ave., Ardsley, Penna. 19038. 215 884-1943.

BUSINESS OPPORTUNITIES

WANT TO BUY OR SELL a golf course? Exclusively golf course transactions and appraisals. McKay Golf & Country Club Properties, 15553 N. East St., Lansing, Michigan 48906. Phone 517 484-7726.

LEARN LANDSCAPING and the growing of plants at home. Start a satisfying business or hobby. Free booklet. Lifetime Career Schools, Dept. A-822, 2251 Barry Avenue, Los Angeles, Ca. 90064.

SEEDS

SOD QUALITY Seeds: Adelphi, Glade, Cheri, Nugget, Merion, Fylking, Majestic, Baron & Touchdown bluegrasses, also fine fescues. Manhattan ryegrass. Custom mixing available. Michigan State Seed, Grand Ledge, Michigan 48837. Phone 517 627-2164.

LAWN SEED. Wholesale. Full line of top quality grasses. Improved bluegrass varieties, fine fescues and fine bladed ryegrasses. We specialize in custom mixing. Oliger Seed Company, 2705 Wingate Avenue, Akron, Ohio 44314. Call collect 216 753-2259.

TURF GRASS SEEDS. All improved varieties suitable for Canadian conditions, custom mixtures, and Prill-On coated seeds. Oseco, Inc., P.O. Box 219, Brampton, Ontario, Canada, L6V 2L2. Phone 416 846-5080.

HELP WANTED

SALES MANAGER for expanding local chemical lawn care business. Must have good knowledge of turf and related diseases. Must have good sales ability. Excellent starting salary plus commission. Excellent opportunity for advancement. Send resume to P.O. Box 222, Franklin Lakes, NJ 07417.

MANAGEMENT POSITION—Industrial Weed Control (Sales & Service). Rapidly expanding Pest Control company seeks qualified individual with ambition for management position of Industrial Weed Control Division in the New England area. B.S. in Agronomy, Forestry or related subjects preferred. Applicant must be sales oriented. Salary range open and benefits offered. Send resume and salary requirements or call A-1 Exterminators, Industrial Weed Control Div., Gary B. Weisberg, 183 Shepard Street, Lynn, Massachusetts 01902. 617 592-2731.

SOD FARM MANAGER—New York state 250 acre sod farm has opening for person experienced in all phases of sod production and harvesting. Background in horticulture or agronomy desired but not

essential. Excellent compensation and benefits for qualified person. Send complete resume to Box 236, Weeds, Trees and Turf, Box 6951, Cleveland, Ohio 44101.

MANAGER—SALESPERSON for interior landscaping department. Minimum four years college and five years experience. Heyser Landscaping, Inc., 400 North Park Avenue, Norristown, Pennsylvania 19403. 215 539-6090.

HORTICULTURIST — CITY OF CHARLOTTE (pop. 350,000). Develops and designs landscape projects and maintenance programs; selects plant materials for projects. B.A. or B.S. in Horticulture or related field; with considerable knowledge of plants, and of the principles and practices of Landscape Design. Salary range \$15,882 to \$20,270 annually. Send resumes to Art Brown, Personnel Department, City of Charlotte, 600 E. Trade Street, Charlotte, NC 28202. An E.O.E. M/F/H.

TURF SPECIALIST/MANAGER TRAINEE positions open at expanding chemical lawn and shrub care company in fast growing Houston, Texas. Tremendous opportunity for those having experi-

NEW FOR 1980

Superintendent Aid's

Roller Brush

**Now, non-stop mowing on
damp or wet fairways!!!**

No more stopping to clean the grass off of your mower rollers. Our NEW Fairway Mower Roller Brush cleans the roller as you mow and our Fairway Brush makes the grass stand up to be cut, all in one continuous operation. Send for our complete catalog of Mower Mounted and Maintenance Brushes for the turf industries.

alpine mfg.

P.O. Box 4844, Rochester, N.Y. 14612, (716) 663-6886

Olathe is . . .

- Turf sweepers
- Hydrostatic drive
- Instant reel adjustment
- 10 MPH transport



Converts to truck
in minutes! Many
attachments available



Brush chippers
From PTO to large trailer
mounted units . . . H. D.
industrial engines . . . New
side feed unit gets
operators out of traffic



Call or write
Olathe Mfg. Inc.

100 Industrial Parkway
Industrial Airport
Kansas 66031
913/782-4396
800/255-6438

Circle 144 on free information card

Classifieds from page 95

ence with national or regional lawn care companies, or knowledge of turfgrass and ornamental plants. The right people will have unlimited advancement potential. Send complete resume including education, experience and salary history to: Environmental Lawn Care, 7544 Harwin, Houston, Texas 77036 or call collect 713 784-1750.

FOR SALE

FOR SALE: Tree/lawn sprayer components, all new; 1-Bean 20-20 500 psi pump, 1-Kohler cast iron 12 h.p. electric start, 1-275 gallon s.s. tank. \$1500. w/used hose and guns. P.O. Box 548, N. Kingstown, RI 02852. 401 294-6397.

1969 FORD F-8000 Tandem log truck with loader. Recent major on Cat diesel engine. 5 x 4 transmission. Truck looks and runs very good. Call 608 784-9600 ext. 237 or 784-1344.

WANTED TO BUY

WANTED: Used older truck and hydraulic loader, good condition. 303 623-2658.

WANTED TO BUY used Hans Greensmower for parts. 717 938-1824.

USED EQUIPMENT

HI-RANGER 54' and other aerial buckets. 2 Asplundh brush chippers, Prentice hyd. loader, chipper truck, John Bean 20 g.p.m. sprayer, 4 & 9 ton tag-along trailer. Allied Enterprises, Inc., W204 N11509 Golden-dale Rd., Germantown, Wi. 53022. Phone 414 255-6161.

HI-RANGERS AERIAL BASKETS 65', 57', 53'. Skyworkers aerial baskets 65', 50', 40'. Vermeer stump cutter 1560, 6. Vermeer tree spade 66, TS 44. Asplundh bucket and brush chippers. Bean sprayer, 9 ton trailer. Parkway Tree Service, 12026 W. Cherry, Wauwatosa, Wisc. 53226. 414 257-1555.

BRUSH CHIPPERS, used Asplundhs, Hydro-Axs and bucket trucks. Lease or for sale. Large inventory available. Call or write P. C. Gould Sales Company, Plains Road, Essex, Conn. 06426. 203 767-1636.

STAINLESS STEEL COMBINE that rolls, aerates, applies seed plus liquid and granular chemicals. Call 301 987-5901.

SALE: 48' Skyworker aerial bucket mounted on 1970 C-700 Ford truck; also, one 48' Skysweeper aerial bucket mounted on 1969 F-600 Ford truck. \$8,500.00 each. Phone 201 922-9393.

FOR SALE: 9" Lindig chipper, 65 h.p., V-4 Wisconsin, like new, \$1,895.00. 12" 4-cylinder Mitts & Merrill, fully reconditioned, \$2,995.00. 12" Asplundh, needs a motor, \$1,495.00. 1973 55 ft. Asplundh on a 1973 GMC with chip box, excellent condition. Asking price, \$22,495.00. 1974 50 ft. Skyworker on a 1974 Chevy with chip box, excellent condition, \$19,995.00. 1977 50 ft. Skyworker on a 1976 Chevy with chip box, like new, \$22,995.00. Edwards Tree Service, 49090 Cooper Foster Park Rd., Amherst, Ohio 44001. Phone 216 988-4477.

FOR SALE: NUNES turf harvester. 18" x 72" rolls. Purchased new August 1, 1978 for \$33,000.00. Current model. With mower attachment. \$20,000.00. Call 503 422-7204.

1979 LEVCO stump grinder. Less than 75 hours. Good condition. 616 698-8008.

STUMP GRINDER, heavy duty, self propelled, 23 h.p., portable machine. One year old. Can be hauled in pickup or small trailer, \$2,500. 804 420-6396.

LOCKE 75 reel mower w/sulkie, used one season. Excellent condition. Completely serviced. \$1000.00. Du Brow's Nurseries, 251 W. Northfield Rd., Livingston, N.J. 07039. 201 992-0598.

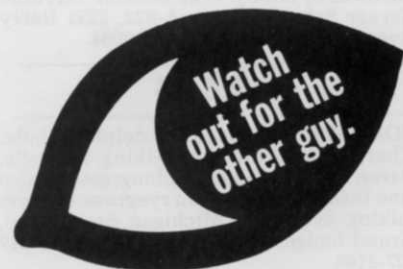
BEAN SPRAYER, 600 gallon glass lined tank, 45 G.P.M. pump, excellent condition. \$3,000. 50% off dealers markup on New Poulan chainsaws, woodsplitters, trimmers, pump or generators. Catalog \$1.00 refundable. 616 599-2849, Poulan, Box 252, Eastport, Mich. 49627.

50 FOOT SERVI-LIFT truck, chip box, Ford 600, Asplundh heavy duty 16" chipper, Vermeer model 10 stump cutter, International dump truck. Dodge A farm truck with two winch to sell altogether. \$30,000.00. Lowell Mooney, Mt. Liberty, Ohio 614 625-5951.

MISCELLANEOUS

NEW — THE WICK-IT WEEDKILLER. Lightweight hand-held wick applicator. No spray, no drift, low herbicide usage. Johnson grass and other weeds growing among desirable plants. Perfect for grounds. \$29.95 plus \$2.00 for handling. Send for brochure. Plant Production, Rt. 7, Box 441E, Fort Worth, Texas 76119.

KNOW pH INSTANTLY. Patented electronic testers, portable, handheld. For soil, liquids, etc. \$22.00 postpaid. Details free. A & H Marketing, Dept. W4, 8325 Dru Ave., S.E., Albuquerque, NM 87108. Phone 505 266-4821.



Drive Defensively.

Published to save lives in cooperation with
The Advertising Council and the National Safety Council.



GIVE MALLINCKRODT YOUR FUNGUS, WEEDS AND ROT, YOUR BROWN AND BARREN TURF.

**GET MEAN ABOUT GREEN
WITH MALLINCKRODT'S VERSATILE
TURF LINE.**

Green is what you want – from
tee to green.

Mallinckrodt's line of proven turf
products has the proven way to get it.

Whether you want broad spectrum
control, or the solution to a specific
problem, get tough about it with
the just-right answer...

FROM THE GREEN GROUP AT

Mallinckrodt[®]

MALLINCKRODT, INC.
ST. LOUIS
JERSEY CITY
LOS ANGELES

See us at
the show:
Booth
910

NEW FOR 1980!

Introducing DUOSAN[®]... a
better way to fight fungus.

Circle 167 on free information card



WT&T EVENTS



**Heals
wounds;
prevents
decay**

Cabot's Tree Healing Paint is a carefully prepared bituminous paint for protecting live wood and preventing decay. Leading arborists and foresters have been using it for almost half a century. Here are the reasons why:

- ideal for trees, shrubbery, etc.; seals, heals wounds, cuts, broken limbs, pruning abrasions.
- stimulates growth of new bark
- apply with brush or spray; produces a black, tough, elastic, quick-drying coating.
- excludes moisture; stops rot; prevents evaporation of sap
- may be used in any season

**clip and mail this
coupon today**

Samuel Cabot Inc.

Dept. 358, One Union St.
Boston, Mass. 02108

Ship _____ pints (12 per case) @ \$ 2.30

Ship _____ quarts (12 per case) @ \$ 4.00

Ship _____ gallons (4 per case) @ \$11.95

Prices F.O.B. shipping point
less normal trade discounts

Circle 165 on free information card

The current issue of **WEEDS TREES & TURF** carries meeting dates beginning with the following month. To insure that your event is included, please forward it, 90 days in advance, to: **WEEDS TREES & TURF Events, 9800 Detroit Ave., Cleveland, OH 44102.**

Great Lakes Park Training Thirty-Fourth Annual Institute, Pokagon State Park, Potawatomi Inn, Angola, IN, **Feb. 24-28.** Contact Dr. Richard Lawson, Indiana University, HPER bldg. Room 133, Bloomington, IN 47405, 812/337-4711.

Pennsylvania Turfgrass Conference, Hershey Motor Lodge and Convention Center, Hershey, PA, **Feb. 26-29.** Contact: Arthur Wick, P.O. Box 362, Sewickley, PA, 15143 or Christine King, Pennsylvania Turfgrass Council, 412 Blanchard St., Bellefonte, PA 16823.

Connecticut Groundskeepers Association, Conference, Hartford Civic Center, Hartford, CT, **Feb. 27.** Contact: Glenn Moore, 141 Hemlock Hill Rd, New Canaan, CT, 06840.

International Erosion Control Association Conference XI, Del Webb's Townhouse, Phoenix, AZ, **Feb. 28-29.** Contact International Erosion Control Association, P.O. Box 807, Freedom, CA 95019.

Iowa Turfgrass Conference, Des Moines Hilton Inn, Des Moines, IA, **Mar. 3-5.** Contact: Ed Cott, Dept. of Horticulture, Iowa State University, Ames, IA, 50011.

Midwest Turf Conference, Stewart Center, Purdue University, **Mar. 3-5.** Contact: W.H. Daniel, Dept. of Agronomy, Purdue University, W. Lafayette, IN 47907.

12th Annual Professional Turf and Plant Conference, Salisbury Restaurant, Eisenhower Park, East Meadow, Long Island, NY, **Mar. 4.** Contact Waldemar Solovieff, 63 Central Ave., Amityville, NY 11701.

49th Fine Turf Conference and 4th Industrial Show of the University of Massachusetts, Civic Center, Springfield, MA, **Mar. 4-6.** Contact Dr. Joseph Troll, Plant and Soil Sciences, Stockbridge Hall, University of Massachusetts, Amherst, MA 01003, 413/545-2353.

Ninth Vertebrate Pest Conference and ASTM Symposium, Hilton

Hotel, Fresno, CA, **Mar. 4-7.** Contact: Jerry Clark, 1220 N. Street, Room A-357, Sacramento, CA 95814.

Canadian Turfgrass 31st Annual Show, Skyline Hotel, Toronto, Canada, **Mar. 9-12.** Contact: Canadian Golf Superintendents Association, 698 Weston Rd., Suite 32, Toronto, Ontario, Canada, M6N 3R3, 416-767-2550.

Northeastern Forest Pest Council Meeting, Holiday Inn Downtown, Portland, ME **Mar. 11-12.** Contact: James Nichols, Bureau of Forestry, 34 Airport Drive, Middletown, PA, 17057.

National Lawn Care Business Conference and Trade Show, Red Carpet Hotel, Milwaukee, WI, **Mar. 16-19.** Contact Lawn Care Conference, Box 1936, Appleton, WI 54913, 414/733-2301.

Rocky Mountain International Society of Arboriculture Workshop on Urban Forestry and Shade Tree Evaluations, Raintree Inn, Colorado Springs, CO, **Mar. 17-19.** Contact Ron Morrow, City Forester, 1400 Glen Avenue, Colorado Springs, CO 80905, 303/471-6640.

Landscape Industry Show of the California Landscape Contractors Association, Long Beach Convention Center, Long Beach, CA, **Apr. 3-4.** Contact Robyn Casey, CLCA Landscape Industry Show, 3617 W. MacArthur Blvd. 500, Santa Ana, CA 92704, 714/979-2522.

Southern California Turf & Landscape Annual Institute, Anaheim Convention Center, Anaheim, CA, **Apr. 8-9.** Contact Ed McNeill, Executive Secretary, Southern California Turfgrass Council, 1000 Concha St., Altadena, CA 91001, 213/798-1715.

Garden Symposium, Williamsburg, VA, **Apr. 13-16.** Contact Mrs. Peggy W. Sabol, Registrar, The Colonial Williamsburg Foundation, Williamsburg, VA 23185, 804/229-1000.

EPA Conference on Waste-to-Energy Technology Update, 1980, Cincinnati, OH, **Apr. 15-16.** Contact Ruth Anne Gibson, Battelle's Columbus Laboratories, 505 King Ave., Columbus, OH 43201, 614/424-5532.

New Jersey Recreation and Park Association Annual Conference, Golden Eagle Inn, Cape May, NJ,

FEBRUARY 1980. Good until May 1980

Weeds Trees & Turf **FREE INFORMATION**

Want free information on products and services advertised and featured in this issue? Use this card. Circle the numbers on which you want information and mail today.

101	102	103	104	105	106	107	108	109	110	111	112	113	114	115	116	117	118	119	120
121	122	123	124	125	126	127	128	129	130	131	132	133	134	135	136	137	138	139	140
141	142	143	144	145	146	147	148	149	150	151	152	153	154	155	156	157	158	159	160
161	162	163	164	165	166	167	168	169	170	171	172	173	174	175	176	177	178	179	180
181	182	183	184	185	186	187	188	189	190	191	192	193	194	195	196	197	198	199	200
201	202	203	204	205	206	207	208	209	210	211	212	213	214	215	216	217	218	219	220
221	222	223	224	225	226	227	228	229	230	231	232	233	234	235	236	237	238	239	240
241	242	243	244	245	246	247	248	249	250	700	701	702	703	704	705	706	707	708	709
710	711	712	713	714	715	716	717	718	719	720	721	722	723	724	725	726	727	728	729

NAME _____ TITLE _____

COMPANY _____ TELEPHONE _____

ADDRESS _____

CITY _____ STATE _____ ZIP _____

Do you want to receive Weeds Trees & Turf? YES NO

Are you interested in receiving or continuing to receive WEEDS TREES & TURF? If you are, complete all the information on this card and mail today.

DATE _____ SIGNATURE _____

1. What is your primary business/industry? (Check one only)

- | | |
|---|---|
| <input type="checkbox"/> Rights-of-Way Maintenance (highway, utility, railroad) | <input type="checkbox"/> Airport Grounds Management |
| <input type="checkbox"/> Commercial/Industrial contract chemical applicator | <input type="checkbox"/> Military Installation Management |
| <input type="checkbox"/> Aerial applicator | <input type="checkbox"/> Land Reclamation/Erosion Control Specialists |
| <input type="checkbox"/> Extension Services/Federal or State Regulatory Agency | <input type="checkbox"/> Lawn Care Company |
| <input type="checkbox"/> Parks or Grounds Management (Federal, State, Municipal) Forestry | <input type="checkbox"/> Lawn Maintenance Company |
| <input type="checkbox"/> Golf Course Management | <input type="checkbox"/> Landscape Contractor |
| <input type="checkbox"/> Cemetery Grounds Maintenance | <input type="checkbox"/> Landscape Architect |
| <input type="checkbox"/> Industrial Park Grounds Maintenance | <input type="checkbox"/> Sod Grower |
| <input type="checkbox"/> Shopping Centers Grounds Maintenance | <input type="checkbox"/> Seed Grower |
| <input type="checkbox"/> Hospital, Nursing Home (grounds maintenance) | <input type="checkbox"/> Tree Service Company/Arborist |
| <input type="checkbox"/> School, College and University (grounds maintenance) | <input type="checkbox"/> Wholesale nursery |
| <input type="checkbox"/> Athletic Fields Management | <input type="checkbox"/> Tree Farm |
| | <input type="checkbox"/> Dealer/Distributor |
| | <input type="checkbox"/> Other (Specify) _____ |

If you are not personally receiving WEEDS TREES & TURF and want your own subscription, circle number 101. Subscription price is \$12.00 per year, U.S. and Canada.



NO POSTAGE
NECESSARY
IF MAILED
IN THE
UNITED STATES

BUSINESS REPLY MAIL
FIRST CLASS PERMIT NO. 2675 CLEVELAND, OHIO

POSTAGE WILL BE PAID BY ADDRESSEE

Attention: Circulation Dept.

Weeds Trees & Turf

9800 Detroit Ave.

Cleveland, Ohio 44102

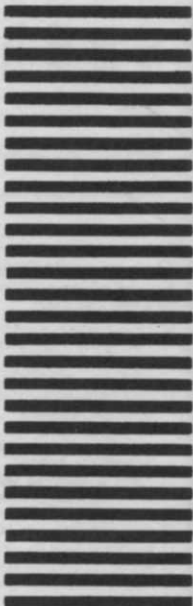




NO POSTAGE
NECESSARY
IF MAILED
IN THE
UNITED STATES

BUSINESS REPLY MAIL
FIRST CLASS PERMIT NO. 665 DULUTH, MINN

POSTAGE WILL BE PAID BY ADDRESSEE



Weeds Trees & Turf

Box 6049

Duluth, Minnesota 55806

Send my personal subscription of Weeds Trees & Turf

NAME _____ TITLE _____

COMPANY _____

ADDRESS _____

CITY _____ STATE _____ ZIP _____

SUBSCRIPTION FORM

Signature _____
 1 YEAR (\$12) 2 YEARS (\$22) 3 YEARS (\$30)
 Check here if you want bulk (5 or more) subscription rate information.

Check Enclosed Bill Me
 1 YEAR FOREIGN (\$15)
 Foreign Air Mail per year (\$39)

1. What is your primary business/industry? (Check one only)

- | | |
|--|---|
| <input type="checkbox"/> Rights-of-Way Maintenance (highway, utility, railroad) | <input type="checkbox"/> Airport Grounds Management |
| <input type="checkbox"/> Commercial/Industrial contract chemical applicator | <input type="checkbox"/> Military Installation Management |
| <input type="checkbox"/> Aerial applicator | <input type="checkbox"/> Land Reclamation/Erosion Control Specialists |
| <input type="checkbox"/> Extension Services/Federal or State Regulatory Agencies | <input type="checkbox"/> Lawn Care Company |
| <input type="checkbox"/> Parks or Grounds Management (Federal State, Municipal) Forestry | <input type="checkbox"/> Lawn Maintenance Company |
| <input type="checkbox"/> Golf Courses Management | <input type="checkbox"/> Landscape Contractor |
| <input type="checkbox"/> Cemetery Grounds Maintenance | <input type="checkbox"/> Landscape Architect |
| <input type="checkbox"/> Industrial Park Grounds Maintenance | <input type="checkbox"/> Sod Grower |
| <input type="checkbox"/> Shopping Center Grounds Maintenance | <input type="checkbox"/> Seed Grower |
| <input type="checkbox"/> Hospitals, Nursing Homes, (grounds maintenance) | <input type="checkbox"/> Tree Service Company/Arborist |
| <input type="checkbox"/> Schools, Colleges and Universities (grounds maintenance) | <input type="checkbox"/> Wholesale Nursery |
| <input type="checkbox"/> Athletic Field Management | <input type="checkbox"/> Tree Farm |
| | <input type="checkbox"/> Dealer/Distributor. |
| | <input type="checkbox"/> Other (Specify) _____ |

Apr.27-29. Contact Gary J. Forbes, President, 530 Turnpike, Pompton Plains, NJ 07444

Les Florales Internationales de Montreal, May 17-29. Contact Les Florales Internationales de Montreal, Dommissiare General, 360 Rue St-Jacques, Suite 310, Montreal, Quebec, Canada, H2Y 1P5.

Kentucky Cemetery Association Annual Meeting, Executive Inn, Louisville, KY, June 12-14. Contact Lewis C. Tingley, Resthaven Memorial Park, P.O. Box 18066, Louisville, KY 40218, 502/491-5950.

NRPA National Forum for Board/Commission Members, Bettendorf, IA, **June 12-15.** Contact Ted Flickinger, NRPA, 600 E. Algonquin Rd., Des Plaines, IL 60016, 312/297-6260.

Residential Landscape Design Course I, Milwaukee, WI, June 18-20. Contact John Shaw, Executive Director, ALCA, 1750 Old Meadow Rd., McLean, VA 22101, 703/893-5440.

Residential Landscape Design Course I, Tucson, AZ, June 23-25. Contact John Shaw, Executive Director, ALCA, 1750 Old Meadow Rd., McLean, VA 22101, 703/893-5440.

Residential Landscape Design Course II, Phoenix, AZ, June 26-28. Contact John Shaw, Executive Director, ALCA, 1750 Old Meadow Rd., McLean, VA 22101, 703/893-5440.

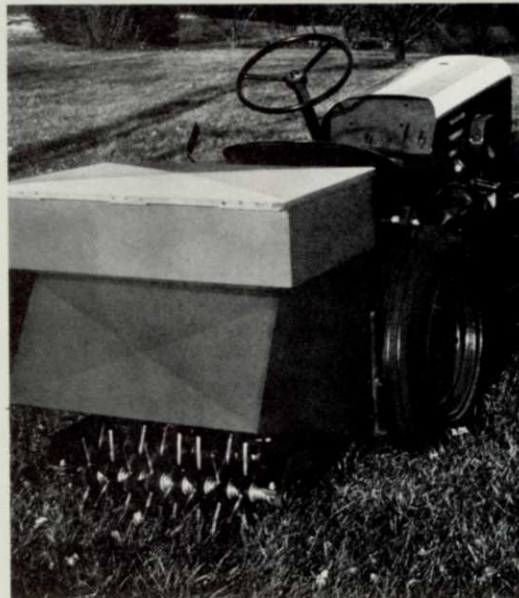
Western Regional Grounds Maintenance and Equipment Show Second Annual, Bear Creek Park, 21st and Argus, Colorado Springs, CO, **Aug. 26.** Contact Frank Cosgrove, Regional Director, National Recreation and Park Association, 3500 Ridge Road, P.O. Box 6900, Colorado Springs, CO 80934.

6th Annual Garden Industry of America Conference & Trade Show, Convention Center, Baltimore, MD, **Sept. 12-14.** Contact Garden Industry of America Conference & Trade Show, box 1092, Minneapolis, MN 55440, 612/374-5200.

Seed, fertilize, dispense insect and weed controls and aerate, all at once!

Now, after years of development, there's Trac'n Combo, the incredible modular combine that makes lawn maintenance faster and more profitable than you thought possible. Look at what Trac'n Combo can do for you:

- * Cut labor costs, increase productivity.
- * Save time. Trac'n Combo covers up to 1000 sq. ft. per minute.
- * Aerate (up to 2" deep) and dispense in forward or reverse.
- * Reduce maintenance costs through simple design and sturdy construction.
- * Minimize waste with precise metering of materials.
- * Simplify lawn care through easy operation. No special training is required.



Trac'n Combo is self-supporting, and attaches to any tractor in minutes. And because it mounts directly on the tractor, it maneuvers well even in confined areas.

Among Trac'n Combo's exclusive, patented features are its retractable spinner plate and aerator, which let you drive over rough terrain or curbs.



For more information, call 201-494-1413 collect, or write to: Trac'n Combo, Inc., P.O. Box 7, Metuchen, NJ 08840.

Illustration of Trac'n Combo mounted on any tractor does not imply tractor manufacturer's endorsement of the unit.

Dealer inquiries welcome. U.S. patent pending

For the turf you care for: season-long protection against crabgrass, Poa annua and other annual grasses and weeds with America's leading preemergence turf herbicide.

Dacthal

