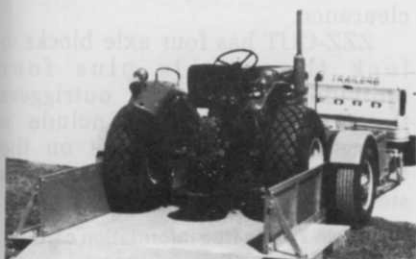


## PRODUCTS



**Life-Time Products** offers an elevating platform trailer capable of hauling two tons of cargo over the highway. The platform hydraulically lowers completely to the ground or can be raised up to 40 inches to accommodate most truck and dock heights. The bed maintains a level plane when raised and lowered, avoiding load damage due to cargo shift. The trailer is designed for one-man loading and unloading of heavy items.

The unit can be pulled by a properly equipped pickup truck and is furnished with standard equipment such as battery-operated hydraulic pump, electric brakes, DOT lights and reflectors, safety chains and ball type hitch for over-the-highway use.

Various cargo boxes, livestock racks, and stake sides are available as optional equipment. Inquiries on custom application are also accepted.

Circle 701 on free information card



**ZZZ-CUT** has been introduced by Products for Energy Inc. as an all-in-one line clearance system. It features a four-wheel drive, all-terrain prime mover; a boom-mounted, hydraulic power saw; and a hydraulic rotary cutter to undercut underbrush.

The telescoping boom reaches 50 feet and swings 360 degrees with a joy stick control. The ZZZ-CUT power saw can sever a 7-inch limb in two seconds.

Power includes a Chrysler slant-six industrial gasoline engine or John Deere Diesel and a four-speed

synchro-mech transmission for a cruising speed of 45 mph. Off-the-road, ZZZ-CUT switches from 2-wheel to 4-wheel-drive. A special hydrostatic drive puts an infinite range of speeds between zero and four mph without using a clutch.

All wheels are controlled with



### Vermeer Stump Cutters: Chew Out Ugly Stumps Without Eating Up Budgets

Stumps. You can burn them. Bulldoze them. Saw them. Or, chop them. But if you really want to remove them efficiently, sink some teeth into your stump removal program with the Diggin' Dutchman's patented Stump Cutters from Vermeer.

They're quick. They're easy to operate. They're economical.

Five hydraulically operated models to fit any size operation. Each equipped with a powerful cutting wheel that **can** dig them out . . . in minutes. In one trip. With one operator. On virtually any stump around. Vermeer Stump Cutters . . . widely used by cities, parks, cemeteries, golf courses, landscapers, utilities and tree service firms everywhere. Ask your Vermeer dealer for a demonstration today. You'll be glad you did.

# Vermeer



®THE DIGGIN'  
DUTCHMAN

6303 New Sharon Road • Pella, Iowa 50219 • (515) 628-3141 • Telex 478-309

Circle 168 on free information card

# Royer equipment... a selection guide for grounds maintenance superintendents



Circle 110 on free information card  
**WOODSMAN LAND CLEARING MACHINES** clear acres a day to ground level. Reduce dense brush, trees to mulch...discharge downward. Self-powered model for dozers, loaders; PTO drives for tractors, Unimogs.



Circle 112 on free information card  
**BRUSH CHIPPERS** for high performance, low maintenance. Feature self-feeding anvil with one-piece chipping rotor-flywheel-blower..."swing-away" blade access. Self-powered and PTO tractor models.



Circle 111 on free information card  
**HIGH CAPACITY SHREDDERS** for processing topsoil, composted leaves, air-dried sewage sludge. Feature continuous shredding, mixing, aerating, trash-oversize removal. Capacities to 125 cu. yds./hr.



Circle 113 on free information card  
**POWERSCREENS** for preparing superfine top dressing mixes. Powered vibrating screen with elevating conveyor for direct truck-loading, stockpiling. Choice of gas or electric drive. Two models.

## ROYER

ROYER FOUNDRY & MACHINE CO.

173 Pringle St., Kingston, Pa. 18704

717-287-9624

full power steering, making it possible to weave in and out of 8-foot openings, turn through a 9-foot inside radius or slip under a 10'6" clearance.

ZZZ-CUT has four axle blocks to lock the wheels plus four individually-controlled outriggers for stability. Options include a fiberglass bucket to mount on the boom in place of the power say, or a steel work platform.

Circle 702 on free information card



**The Hefty Grade-All** is a new compact grader introduced by the Hefty Tractor Company. It features an economical 27-horsepower gasoline or optional diesel engine and an all-gear transmission with six forward speeds and one reverse.

Standard equipment includes a hydraulically controlled, multi-function grader blade, power steering, and front weights.

Available options include a front-mounted, dozer blade-scarifier assembly; rear-mounted blade with angle, tilt and offset capacity; snow plow; warning lights; R.O.P.S. bar; mid-mounted rotary and flail mowers.

Circle 703 on free information card



**The 1979 Swinger 200** has been introduced by Dynamic Industries. Designed with an SAE operating capacity of 2005 pounds, the Swinger 200 is powered by a water-cooled, 52 (SAE Net) horsepower gasoline engine with an optional diesel engine offered.

Features include a 20-degree front-rear frame oscillation, four-wheel hydrostatic drive and 80-degree articulated steering. Controls



# Working 2 Shifts.

Whether it's in open sun or moderate shade, Glade Kentucky bluegrass produces beautiful lawns.

Under trees, beside buildings, in up to 60% shade Glade produces deep green turf; has a higher level of resistance to most races of powdery mildew, stripe smut and leaf rust.

Planted in open sun, Glade goes to work the same way. Germinates quickly, establishes fast, forms a thick rhizome and root system, resulting in dense, low-growing turf. Glade Kentucky bluegrass has better than average resistance to today's Fusarium blight, works as a vital fortifying ingredient in many professional turf grass mixtures. Glade Kentucky bluegrass is a Rutgers University selection (tested as P-29). Its name is your guarantee of physically pure, genetically true seed.

Specify Glade Kentucky bluegrass, available at your local wholesale seed distributor. It works 2 shifts, sun and shade.

Another fine, quality-controlled product of Jacklin Seed Company.

**Glade**  
**Glade**  
KENTUCKY BLUEGRASS

U.S. Plant Patent 3151





# Funding the future

Professor H. B. Musser has made an investment in the future. He is the developer of Pennncross Bentgrass, Pennlawn Fescue, author of the book *Turfgrass Management*, and a noted educator.

Professor H. B. Musser devoted his career to grass seed research. As a tribute to this outstanding Pennsylvania State University Turf Seed Agronomist, the Musser Foundation was formed.

The foundation's purpose is to assist graduate students in turf research through a fellowship program. This means students who have finished their undergraduate work and are going into turf research may receive financial assistance at this critical point in their careers. Only the interest earned from the H. B. Musser Fund will be used for fellowships, so the dollars you contribute keep on working in perpetuity.

If you or your company are involved in the sale or use of turfgrass or turfgrass-associated products or services, there's no better way to help yourself and the future of the turf industry than an annual contribution to the Musser Foundation.

Contributions may be made in the name of a loved one through the Memorial Fund, or to the Turfgrass Research Fellowship Fund.

"A fellowship involves an exceptional graduate student doing needed research, writing a thesis, adding to turfgrass literature and providing leadership for the future."

---

**THE MUSSER INTERNATIONAL TURFGRASS FOUNDATION**  
of the H. B. Musser Turfgrass Fellowship, Inc.



Please send contributions in care of:

**Dr. Fred V. Grau**

P.O. Box AA

College Park, MD 20740

---

A nonprofit organization dedicated to fostering Turfgrass as a learned profession; to enhancing the lives of people all over the world through Turfgrass, and to supporting education and research in Turfgrass development and management.



consist of a standard steering wheel and two foot pedals. Convenient right-hand levers control all bucket lift and tilt functions.

Other models with SAE operating capacities of 1251 pounds and 3012 pounds, and a complete line of rough terrain lift trucks are also available.

**Circle 704 on free information card**



Rokor has introduced two models of tree diggers and is working on a third. Model TD-32 will dig up to a 3-inch diameter tree with a 32-inch ball. Model TD-40 will dig up to a 4-inch tree with a 40-inch ball. Model TD-54, when introduced, will dig up

to a 6-inch tree with a 54-inch ball.

Model TD-32 weighs 1070 pounds and will dig a 28-inch deep, 420 pound ball. It measures 71½ inches across and will set or dig trees within 36 inches of walls or fences. It is designed so that the opened frame is the same width as when closed.

Stem supports are gusseted for extra strength. The stems slide over pins instead of on tracks or stem guides for smoother, positive blade insertions. Blades are offered with a choice of pointed, for sandy soils, or frustrum for clay soils.

**Circle 705 on free information card**



**R&D Sprayers** have designed two models of hand-held sprayers that can distribute chemical with ac-

curacy in small plot work, parks, golf courses, and areas where large equipment is prohibited.

The sprayers are light-weight, non-corrosive and are available with one- or three-gallon containers. The sprayers are equipped with CO<sub>2</sub> cylinders and feature all aluminum, multi-nozzle spray booms. A single-nozzle spray boom is available for band or directed application.

An operations manual is included which defines calibration and has charts showing quantity of formulated product required per gallon of spray solution based on total spray per acre, recommended rate and product formulation.

**Circle 706 on free information card**

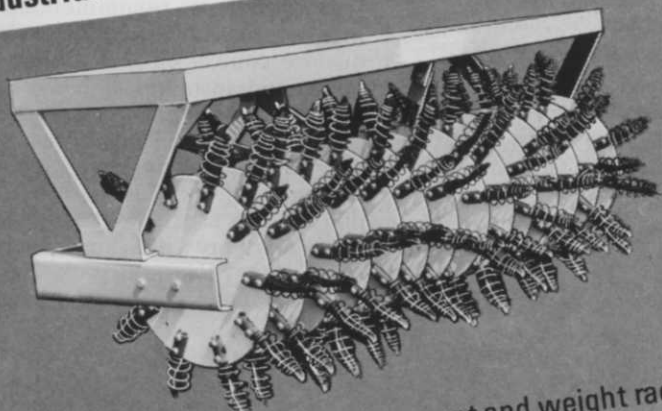
**Pinto Reclamation Mixtures** of grass seed have been introduced by Lofts Pedigreed Seed and Jacklin Seed Company. The mixtures are specially formulated for use in the reclamation and restoration of land in areas where it is extremely difficult to grow grasses.

Four Pinto brand mixtures are

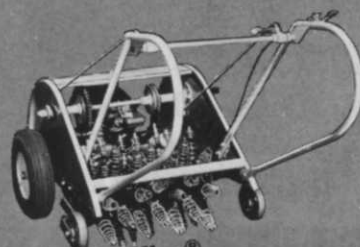
# Hahn

## THE TURF PROFESSIONALS

A complete line of Aerifiers for fairways, athletic fields, industrial and institutional lawns... at prices you will like!



**TM-140**  
6 ft. swath. Three-point hitch mount and weight rack.  
Also available with wheels and hydraulic lift.



**JR-3 Aerifier®**  
2 ft. swath. Self-propelled,  
fast and maneuverable.



**AB-1 Aeri-Boy**  
4 ft. swath. Simple flip-over permits  
quick transport.

Optional Spoons and Blades for double utility.  
Also available — a complete line of Thatchers.

**Hahn** 1625 N. Garvin St., Evansville, In. 47711

**Circle 128 on free information card**

**DEALERS WANTED (812) 424-0931**

# Myers

FIBERGLASS TURF SPRAYERS



TL10 and 40 Series



VTL10 Series

Myers fairway and general turf maintenance sprayers offer non-corrosive fiberglass construction throughout. Agitator assembly is stainless steel. Wide choice of optional running gear, PTO or engine drive. 100 and 200 gallon tanks. Write for our catalog.

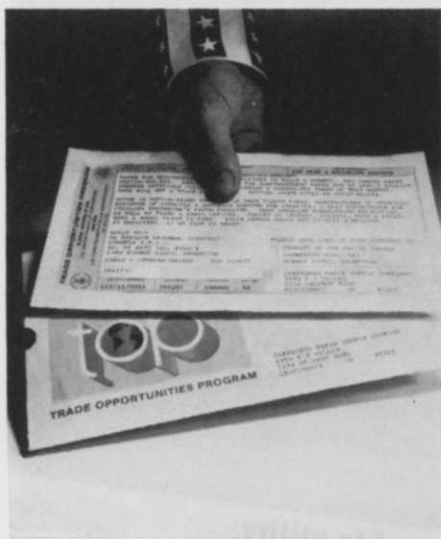
See us in San Antonio, Booths No. 2425-27.

**Myers**  
**TurfLine**  
F. E. MYERS CO. DIVISION OF  
400 ORANGE STREET, ASHLAND, OH 44805 **McNEIL**  
CORPORATION

Circle 107 on free information card

To get overseas trade leads like this,  
you could open offices in 127 countries.

Or use our computer.



The U.S. Commerce Department's computer-operated Trade Opportunities Program (TOP) can supply you with immediate, continuing, specific leads tailored to your sales objectives for any of 127 countries. So if you can't be all over the world at one time, we've got the answer. To learn more, write Secretary of Commerce, U.S. Department of Commerce, BIC-9C, Washington, D.C. 20230.



A Public Service of This Magazine & The Advertising Council

available, each formulated for specific combination of soil pH and moisture: Dry Acid Mixture; Moist Acid Mixture; Dry Alkaline Mixture; and Moist Alkaline Mixture. All will adapt in areas from coast to coast where cool season grasses are grown.

Pinto Reclamation Mixtures were formulated for such applications as the revegetation or reclamation of fire-damaged areas, strip mines, highway, ski trails and similar projects. The mixtures can be applied with any hydroseeder or conventional seeding equipment.

A Pinto brand Wildflower Seed Mixture is also available to add color or enhance any "back to nature" area.

Circle 707 on free information card



**Chipco 26019**, a new turf fungicide with a 14-21 day spray interval, has been registered by EPA, according to the Agricultural Division of Rhone Poulenc Inc.

Foliar applied, Chipco 26019 (Iprodione) is recommended for preventative and curative turfgrass disease control on golf courses, sod farms and institutional areas where fine turf is grown. It is registered for control of dollar spot, brown patch and Helminthosporium, leafspot, and melting out. Testing has shown that Chipco 26019 will also control the benomyl resistant strain of dollar spot, according to Jack Davies, general manager of the Agricultural Division.

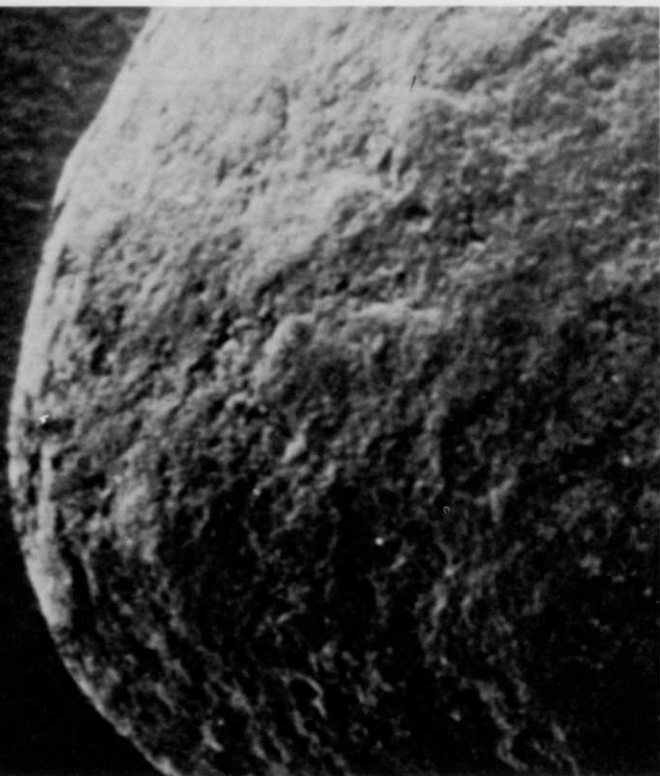
The fungicide is applied at rates of .75 to 1.0 ounce of active ingredient (AI) per 1000 square feet (M) to control dollar spot and brown patch, and 1.0 ounce AI/M to control Helminthosporium.

Chipco 26019 is formulated as a 50 percent wettable powder (WP) and is available in two pound bags packed six to a carton.

Circle 708 on free information card

# THE BIGGEST VALUE IN CONTROLLED RELEASE NITROGEN!

Magnification of sulphur coated urea granule



If you're a lawn  
applicator . . .

If you're not using  
Sulfur Coated  
Urea . . .

**READ THIS!**

Then call us toll-free at:

East of the Mississippi

1-800-321-5951

In Ohio Dial 1-800-362-7413

Or Call Collect 216-323-7544

If you're a lawn applicator and you're not using LESCO 36 Sulfur Coated Urea in your program, it's costing you money, it's costing you performance, and maybe it's costing you customers.

LESCO 36 Sulfur Coated Urea is a giant leap for turf management. This controlled release nitrogen source delivers a guaranteed minimum of 36% nitrogen and 12% sulfur. Between 10 to 20% of the nitrogen is available within the first 7 to 10 days, with the remainder available over a period of several months. This means quick greening, sustained feeding and reduced application costs. And because you buy from Lakeshore, you buy from the manufacturer. And that means quality and savings.

If you are a truckload buyer, take advantage of our toll-free information service and call Barb today. She'll have our representative contact you immediately. Those east of the Mississippi can reach her by dialing 1-800-321-5951. (In Ohio, dial 1-800-362-7413.) If you're west of the Mississippi, call Barb collect at 216-323-7544.

Take that small step and call today. We'll be glad to tell you about LESCO 36 and our other fine LESCO Products, such as LESCOSAN (Betasan\*), the liquid pre-emergence crabgrass control that outsells all the competition. Our LESCO Quality Products and Friendly Service are always as close as your phone.

\*(Betasan—Registered TM of Stauffer Chemical Company.)

## LESCO PRODUCTS

Division of Lakeshore Equipment & Supply Co.  
300 S. ABBE ROAD, ELYRIA, OHIO 44035

A FAMILY OF FINE PRODUCTS—Lescosan 12.5G—Lescorene—Lesco 4—Lescobor—Lescopar—Lescopex—Lesco Non-Selective Herbicide  
Lesco MSMA—Lesco Thiram 75W—Lescozyme—Lakeshore Chinch Bug & Sod Webworm Control



## CLASSIFIEDS

When answering ads where box number only is given, please address as follows: Box number, c/o Weeds Trees and Turf, Dorothy Lowe, Box 6951, Cleveland, Ohio 44101.

Rates: All classifications 65¢ per word. Box number, \$1. All classified ads must be received by Publisher the 5th of the month preceding publication date and be accompanied by cash or money order covering full payment. Mail ad copy to: Dorothy Lowe, Weeds, Trees & Turf, P.O. Box 6951, Cleveland, Ohio 44101.

## USED EQUIPMENT

**2 — 50' AERIAL BASKETS**, brush chipper, stump cutter, 2 sprayers, small crane. Parkway Tree Service, 12026 West Cherry St., Wauwatosa, Wisconsin 53226. 414 257-1555.

**5 TON NATIONAL CRANE**, 85 ft. on 1971 GMC with 5 yard Heil dump body, excellent condition and hardly used. Used spray equipment. 1973 Bean Mist blower (new). Call P. C. Gould Sales Co., Middlesex Turnpike, Essex, Conn. 06426. 203 767-1636.

**24' MULKEY BELT CONVEYER**, 7 HP Wisconsin gas engine adjustable 180° wheels, excellent condition. Perfect for loading and unloading sod. Harry Murphy, 2715 N.W. 69, Oklahoma City, Oklahoma 73116. 405 842-7177.

**STUMP GRINDERS, chippers, log splitters**, sprayers, bucket trucks, all reconditioned. Let us know your needs. Essco, 5620 Old Sunrise Hwy., Massapequa, N.Y. 11758. 516 799-7619.

**TREE SERVICE LIQUIDATION SALE:** Tree trucks, brush chippers, sprayers, power saws, and various small tools. Novosel's Tree & Landscape Service, R.D. 6, Box 319, Kittanning, Pennsylvania 16201. Phone: 412 543-2202.

**VERMEER M460 4 wheel drive tractor** with TS-30 Vermeer tow spade. Hydraulic angling dozer blade. 65 H.P. Wisc. engine. Excellent condition. \$9000.00 or offer. 312 668-1032 (Ill.).

**WANTED: Used gang mowers**, prefer a 9 gang or larger in the Midwest area that is in good working shape. Call 815 469-9421.

**FOR SALE 18 in. Ryan sod cutter** with Sulky roller, near new. 1 303 683-2265.

## SEEDS

**SOD QUALITY Seeds:** Adelphi, Glade, Cheri, Nugget, Merion, Fylking, Majestic, Baron & Touchdown bluegrasses, also fine fescues. Manhattan ryegrass. Custom mixing available. Michigan State Seed, Grand Ledge, Michigan 48837. Phone 517 627-2164.

**LAWN SEED. Wholesale.** Full line of top quality grasses. Improved bluegrass varieties, fine fescues and fine bladed ryegrasses. We specialize in custom mixing. Oliger Seed Company, 2705 Wingate Avenue, Akron, Ohio 44114. Call collect 216 753-2259.

## HELP WANTED

**OUR EXPANDING OPERATION** enables us to offer several excellent opportunities for highly qualified experienced individuals in the following areas: 1) Landscape Design/Sales: Responsibilities include: negotiating with architects, developers and contractors to secure landscape construction contracts; estimating and bidding; site-design; scheduling and supervision of 3 to 5 crews; and complete coordination of landscape construction projects. Successful applicant will have a Bachelors Degree in Landscape Architecture and 1 to 2 years experience or the equivalent in experience. — 2) Landscape Foreman; responsibilities include: proper installation of plant material and landscape features including grading; correct use and care of equipment; and supervision of crews. Successful applicants will have 1 to 3 years of experience in the landscaping industry with at least 1 year in a supervisory capacity and knowledge of reading blueprints. — 3) Landscape Maintenance Foreman; responsibilities include: proper care and maintenance of plant material (i.e. fertilizing procedures, spraying, mowing, pruning and cultivation); correct use and care of equipment; and supervision of crews. Successful applicants will have 1 to 3 years of experience in landscape maintenance with at least 1 year in a supervisory capacity. These are year-round positions with excellent starting salaries and full company benefits. If you feel you are qualified for one or more of these positions described above, and you are an ambitious, self-motivated, knowledgeable individual who enjoys a challenge and one who takes pride in his work, then you are what we are looking for. Please contact our office immediately. Bob's Green Thumb Landscaping Co., Inc., Rae Ann Borst, Secretary, RR 1, Box 131, Mundelein, Illinois 60060. (312) 634-9300.

**GOLF COURSE TURF PROFESSIONALS:** An opportunity to sell Pro Turf products. ProTurf Division of O.M. Scott & Sons, the nation's leading manufacturer and marketer of professional turf products, has openings for Technical Representatives in several territories. The Tech Reps selected will call on golf course superintendents, requiring a knowledge of turf management and an understanding of these professionals' needs. Applicant should have a BS degree or equivalent in one of the agronomic sciences. Excellent starting salary plus bonus, automobile, and a comprehensive benefits program at no cost to employees go along with these positions. Send resume in confidence to Dick Stahl, Director of ProTurf, O.M. Scott & Sons, Marysville, Ohio 43040. An equal opportunity employer.

*Continues on page 100*

Embark®  
Plant Growth  
Regulator

is available at these locations:

Wilbur-Ellis Co.  
696 Naplus Street  
P.O. Box 935  
Chula Vista, CA 92012  
Attn: Ralph Cramer

Wilbur-Ellis Co.  
P.O. Box 1286  
Fresno, CA 93715  
Attn: Don Niboli

VanWaters & Rogers  
1363 South Bonnie Beach Place  
Los Angeles, CA 90023  
Attn: Paul Sanders

Moyer Chemical Co.  
1310 Bayshore Highway  
P.O. Box 945  
San Jose, CA 95112  
Attn: Donald Meyer

VanWaters & Rogers  
2256 Junction Avenue  
San Jose, CA 95131  
Attn: Bevan Cates

Moyer Chemical  
230 East Dyer Road Unit  
Santa Ana, CA 92707  
Attn: Pat Sano

Wilbur-Ellis Co.  
14111 Freeway Drive  
Santa Fe Springs, CA 90670  
Attn: Mike Bell

Walter W. Fuchs  
Turf Products Limited  
2N255 County Farm Road  
West Chicago, IL 60185

Riley Lawn & Golf Equip. Corp.  
6810 Guion Road  
Indianapolis, IN 46268  
Attn: Robert Scobee

The Dalton's Incorporated  
U.S. 30 East  
P.O. Box 246  
Warsaw, IN 46580  
Attn: Don Dalton

W. F. Miller Co.  
1593 South Woodward  
Birmingham, MI 48011  
Attn: Russ Hancock

R. L. Gould Company  
3711 Lexington Avenue North  
St. Paul, MN 55112  
Attn: Gordon Miller

Turf Supply Company  
2970 Dodd Road  
St. Paul, MN 55121  
Attn: John Kolb

VanWaters & Rogers  
3950 Northwest Yeon Avenue  
Portland, OR 97210  
Attn: Romeyn Kruiswyk

Wilbur-Ellis Co.  
P.O. Box 8838  
Portland, OR 97208  
Attn: Gordon Hidman

VanWaters & Rogers  
8201 South 212th  
Kent, WA 98031  
Attn: John W. Barber

Wilbur-Ellis Co.  
1200 Westlake Avenue North  
Suite 10000  
Seattle, WA 98109  
Attn: Jack Fisher

Reinders Brothers, Inc.  
13400 Waterwon Plank Road  
Elm Grove, WI 53122  
Attn: Ed Devinger





## Is Turfgrass Managing You?

# Embark® Plant Growth Regulator Puts You In Command—



\*Read label instructions carefully  
before application.

"Embark" is a registered trademark of  
the 3M Company.

### Slows Turf Growth When and Where You Need It.

This spring and summer, you decide when to send your mowers into action!

"Embark" Plant Growth Regulator reduces turf growth without injuring grass or inhibiting root development. That means less mowing and more time for other jobs.

A spray application of "Embark" Plant Growth Regulator on actively growing turf lasts up to eight weeks.

For hard-to-mow areas—roughs, along fences, highway embankments—"Embark" Plant Growth Regulator keeps most commonly-grown species\* of grass on hold. Saves equipment and labor. Plus takes the pressure off a busy season.

This year make "Embark" Plant Growth Regulator part of your turf management. It's the common sense way to cut mowing and trimming costs.

Distribution of "Embark" Plant Growth Regulator for commercial turf is planned for many areas of the country this season. For a listing of "Embark" Plant Growth Regulator distributors in your area,

write: Agrichemicals/3M  
223-6SE, 3M Center  
St. Paul, MN 55101

# 3M



**GROUND PERSONNEL.** Excellent opportunities in desirable academic environment with good benefits program. Midway between Houston and Galveston with good climate and year-round recreational activity. Foreman: Experienced, will develop and direct grounds personnel, able to be certified as pesticide applicator. Arborist/climber: Experienced in all areas of tree maintenance. Equipment operator: Operate a variety of standard heavy duty power grounds equipment. Irrigation specialist: Maintain and operate 70 acres of irrigated turf and landscape. Submit complete resume with salary history to: Director of Physical Plant, University of Houston at Clear Lake City, 2700 Bay Area Boulevard, Houston, Texas 77058. UH/CLC is EO/Hdcp/AA/MF Employer.

**HORTICULTURE FACULTY Asst./Assoc. professor** to teach intro., to plant Science, soil conservation, plant propagation, arboriculture in new facilities. Qualifications: Master's degree in plant science is minimum plus four years practical field experience in at least two of the following areas. Greenhouse management, nursery management, soils and landscape maintenance. Teaching experience is desirable. Interest in relating to two year college level students is necessary. Hiring range: \$12,500-\$17,000. Closing date for applications: April 30, 1979. Send resumes to Willard T. Keane, Affirmative Action Office, SUNY, Agricultural and Technical College, Delhi, New York, 13753. An equal opportunity/affirmative action employer.

**GRANDVIEW, MISSOURI.** Director of parks and recreation. Administer parks and recreation department programs and services, including a budget of \$236,000 and six full-time employees. City of 27,000; 129 acres of park land, including 71 acres developed and two municipal pools. Salary range \$16,247-\$21,792. Requires a knowledge of administrative principles and concepts, program planning, and budget preparation. Management experience, familiarity with personnel administration, and knowledge of horticulture and landscaping desired. Send applications to City Administrator, Municipal Offices, 1200 Main, Grandview, Missouri 64030 by February 15, 1979.

**POSITIONS OPEN NOW** Leading horticultural services company in Houston, Texas (established, 1959). Major expansion program requires experienced working crew supervisors and assistants in Landscape Maintenance Division (leading to superintendent positions). Chemical Division (industrial weed control and chemical lawn maintenance) and Landscape Division — experienced all levels. All divisions, including Indoor (plant leasing & greenhouse) offer career opportunities for untrained, but willing to learn. Apprentice program, promotions, excellent fringes. Year round, no layoff jobs. The Spencer Company, P.O. Box 16113, Houston, Texas 77002. Call Len Spencer (713) 691-3991.

**LANDSCAPE SUPERVISOR and urban forestry supervisor.** The city of Milwaukee Bureau of Forestry is currently seeking two professionals to administer its tree division and landscape division programs. Strong management experience and technical training in the areas of urban forestry, landscape architecture, ornamental horticulture, or in a related field is required. 1978 salary range: \$21,095-\$25,662, with entry up to \$22,814. For further information or application contact: City of Milwaukee Personnel Department, 200 E. Wells Street, Milwaukee, Wisconsin 53202. 414 278-3380. An equal opportunity employer.

**GROWTH OF ESTABLISHED CHICAGO lawn care firm** offers opportunity for individuals with proven performance record. Facility manager: Seek seasoned professional with strength in operations management. Service supervisor: Experience necessary for management of \$200,000 plus accounts and service staff. Agronomy/turf background and field experience desirable. Service technicians: Experience desired, but will train growth-oriented person. Send qualifications or call for immediate consideration. Sherry Roethe, c/o Tempo 21, Inc., 195 E. Kehoe, Carol Stream, Illinois 60187. 312 682-3201.

Continues on page 103

# Snowco offers the all around utility trailer line



Model 20-005 with standard wheel covers



Model 20-002 with standard hub caps

Take your choice of seven flatbed trailers with loading ramps or tilt decks, plus a box bed trailer with tailgate. They're ideal for hauling grounds maintenance equipment and other bulky, hard-to-handle items.

Two trailers with ramps; both with perforated steel decks. Capacities 1,150 and 2,100 pounds.

Five trailers with perforated steel tilt decks. Capacities 1,000 to 3,500 pounds.

One steel box bed trailer with optional canvas or fiberglass cover. Capacity 1,200 pounds.

Send Coupon Today



## Snowco

Division of Beatrice Foods Co.  
4386 McKinley, Omaha, Nebr. 68112  
Please send Utility Trailer Information

Name \_\_\_\_\_  
Firm \_\_\_\_\_  
Address \_\_\_\_\_  
City \_\_\_\_\_ State \_\_\_\_\_ Zip \_\_\_\_\_