



Jack Lynn, licensed landscape architect. Owner, Landscape Designers, Franklin, Tenn., consultants to Vanderbilt University.

**"Jobe's Spikes are a good opportunity to make money in the winter."**

Jobe's Tree and Shrub Spikes help Jack Lynn make money in the off-season. They extend his business well into winter, when crews would otherwise be idle. Lynn adds, "Jobe's Spikes take the guesswork out of feeding trees and shrubs. We wouldn't use anything else."

## Jobe's Spikes build profits from the ground up.

Join the tree care professionals who make more money by using Jobe's® Tree and Shrub Spikes.

In every type of climate . . . every kind of soil from sand to heavy clay, Jobe's Spikes have proved their effectiveness. They're better than broadcast fertilizer because plant food gets down to the roots without danger of run-off, burned turf or excessive leaching. And you know exactly how much fertilizer you've applied. A plastic cap makes driving easier and protects the spikes while they're being driven.

Jobe's Spikes require no expensive equipment or skilled labor. Just tap into the ground around the drip line at the rate of one spike per inch of trunk diameter.



Rainwater or soil moisture does the rest. *Jobe's® Tree and Shrub Spikes feed trees in about one fourth the time, at less than half the cost of drilling. A 5" diameter tree takes about 5 minutes labor. Compare that to 30 minutes to drill holes, plus time and cost to apply 10 pounds of fertilizer.*

Jobe's Spikes are a pre-measured amount of fertilizer formed into easy-to-drive spikes by means of a patented binder. The binder provides uniform release of nutrients. Tree and Shrub Spikes are 16-8-8 analysis. Evergreen Spikes are 12-6-8. Fruit Tree Spikes are 5-15-15. Call your local Jobe's distributor or order direct. \$30 per case (105 Spikes) prepaid, 5 case minimum. 15 or more cases, \$25 per case. 36 or more cases, \$22.50 per case.

# Jobe's® TREE & SHRUB SPIKES

The easy method for professional tree care.

International Spike, Inc., P.O. Box 24207, Lexington, Kentucky 40524. Tel. 800/354-9360. In Kentucky 606/252-1721.

**ProTurf PreSeason Sale!**  
Contact your Tech Rep!

# All fertilizers are not created equal.

Scotts ProTurf® High Density Fairway Fertilizer is unlike any other fertilizer you can buy. The name itself tells you the kind of beautiful, vigorous results a professional turf manager like you can expect.

Scotts . . . the grass people. We have more than a century of experience in making things grow.

ProTurf . . . Scotts' professional turf division. It means that this is no garden store variety of turf product. It's developed, manufactured and sold specifically—and exclusively—for schools, colleges, golf courses, landscape contractors, lawn service companies, cemeteries, parks, sod growers and other professional users.

High Density . . . a combination of both fast-acting and controlled release forms of nitrogen in each granule. And unlike conventional mechanically mixed fertilizers, each individual granule is the same analysis that's printed on the bag. It's a completely homogeneous fertilizer, so the nitrogen, phosphorus and potassium are distributed evenly. This means the grass plants get the nutrients in the same proportions you selected. It spreads quickly and easily. And is

safer for your turf than many commercial fertilizers. When compared to a 12-4-8 fertilizer, it saves you two-thirds of the storage space and reduces labor by as much as fifty percent because you apply fewer bags per acre.

Fairway Fertilizer . . . originally developed to meet the needs of golf course superintendents for a high quality, high nutrient, non-burning, long lasting maintenance fertilizer. ProTurf High Density Fairway Fertilizer is now applied by thousands of turf managers in the United States and Canada in all sorts of use and environmental conditions.

But find out for yourself. Try Scotts ProTurf High Density Fairway Fertilizer on your turfgrass this season. The proof will be in the results.

All ProTurf products are sold directly to professional users. For more information about High Density Fairway Fertilizer or our fifty other fertilizers, fungicides, insecticides, herbicides, combination fertilizer/pesticides, seed and equipment, contact your ProTurf Technical Representative or call ProTurf collect at 513/644-0011.



**Scotts**

ProTurf Division • O.M. Scott & Sons  
Marysville, Ohio 43040

Circle 122 on free information card



# GOVERNMENT

## UPDATE

### IRRIGATION

#### Texas A&M, Toro to study water use

A contribution to Texas A & M University by the Toro Company will help finance a four-year study of water use rates for turf-grasses. The work will be directed by Dr. James Beard and was conceived by graduate student Don Johns.

The purpose of the study is to improve water irrigation efficiency and to help identify water requirements of certain turfgrass cultivars.

### TREE

#### Arborists report growth in volume

Despite bad spring weather, arborists are reporting growth in business volume this year. A survey conducted by the National Arborist Association revealed that more than 75 percent of arborists are experiencing increased volume in tree spraying, trimming and general tree care.

However, arborists indicated a reduction or no increase in landscaping work. Only Midwest arborists said they experienced an increase in landscaping work for the first half of 1978.

The arborists expect the remainder of the year to produce excellent sales.

### TREES

#### Funds appropriated for chestnut blight

Funding proposed by Sen. Robert Byrd (D) of West Virginia has been appropriated for research on a possible solution to chestnut blight at the Northeast Forest Experiment Station in Morgantown, W.Va.

The research to be performed by West Virginia University and Virginia Polytechnic Institute researchers centers around a strain of the chestnut blight and a phenomenon called hypovirulence. Strains of the disease can actually heal chestnut blight cankers. The object is to isolate this strain and produce it for use against the blight.

#### Options sought for disposal regulations

Triple rinsing as a label requirement is one option to proposed pesticide container disposal regulations termed not enforceable by EPA's Office of General Counsel.

The lawyers said FIFRA is a labeling act and enforcement is legal only in cases of label violations. Current proposed regulations do not involve specific labeling instructions and therefore would be not enforceable nor would they mean criminal penalty. Pesticide suppliers may be asked to implement recycling programs under options being considered by EPA.

#### Conference Committee agrees on state primacy

The House-Senate Conference Committee reviewing FIFRA amendments agreed that states with approved plans will be the primary enforcers of FIFRA. The committee also defined pest control operators as commercial applicators and not distributors subject to warrantless inspection and stiffer penalties.

Thirty states have approved pesticide use plans and therefore will come under the primacy rule if the amendments are approved by the House and Senate and signed by the President. States without approved plans will be subject to Federal enforcement. A condition permits Federal intervention in the case of emergencies.

#### Inconsistent use exceptions settled

The House-Senate Conference Committee has reached an agreement on proposed FIFRA legislation regarding use inconsistent with the label. If passed by House and Senate and signed by the President, the exceptions will be:

- using a pesticide at less than label concentration
- mixing pesticides with fertilizer if not specifically prohibited by the label
- applying a pesticide for a target pest not listed on the label providing the application is to a labelled crop, animal or site and the label does not specifically prohibit use against that target pest
- using a method of application not listed on the label.

#### Cloture fails again, labor bill delayed

The controversial, pro-union Labor Reform Bill will not be passed this year because an effective filibuster and failure to invoke cloture have made a final vote impossible.

#### OSHA permits access to safety records

Rules have been revised by OSHA permitting worker access to the employer's log of job-related injuries and illnesses. All employers with 11 or more employees must maintain such records under law.

PEOPLE



**Dr. Fred V. Grau** has been awarded life membership in the Pennsylvania Roadside Council in recognition of his outstanding contribution to improving the scenic beauty of that state.

Dr. Grau, agronomist, turf authority, and president of Grasslyn, Inc., College Park, MD, discovered crownvetch by "taking the right forks in

the road" while taking a leisurely, scenic route to a meeting.

In 1970, it was estimated that more than 18,000 acres of Crownvetch had been planted along Pennsylvania rights-of-way since 1947, resulting in a savings to taxpayers of more than \$100,000 in mowing costs alone.

**Ray McMicken**, president of the B. Hayman Co., Santa Fe Springs, CA, has accepted a position on the Board of Directors of the Musser International Turfgrass Foundation, according to Dr. Fred V. Grau, president of MITF. McMicken fills the vacancy created by the resignation of Wayne Morgan, Kellogg Supply, Inc., Carson, CA.

McMicken has won the Top Volume award for his company four times, putting him at the top of all U.S. Jacobsen distributors. He has been active in many turf-oriented projects in Southern California and in Hawaii. Assistance to young turf students is a favorite endeavor.

"We are fortunate in having a man of Ray's caliber join us in our efforts to develop trained leaders for the future," said Dr. Grau.



**David McLaughlin**, chairman and chief executive officer, The Toro Company, Minneapolis, has been elected to the Board of Directors of the Chamber of Commerce of the United States. His election to the 65-member policy setting group of the world's largest business federation was announced by Chamber President Richard L. Leshar.

McLaughlin joined the Toro Company in 1970 as president, assuming the additional role of chief executive officer three years later. Last year he was named chairman of the board.

McLaughlin is also chairman of the board of trustees of Dartmouth College and a board member of Dunwoody Institute; the Minneapolis Society of Fine Arts; National Alliance of Businessmen, and the Better Business Bureau. He serves as a member of the board of advisors of the Midwest Research Institute and on the Stanford Research Institute Council.



**Drummond L. Kurtz** has been named Vice President of Operations for E-Z-Go Textron. The promotion, effective immediately, was announced this week at Polaris E-Z-Go Textron's division headquarters in Minneapolis. In his new position, he has responsibility for all manufacturing operations at the division's golf car facility in Augusta, GA.

Since joining E-Z-Go in 1974, Kurtz has acted as production control manager and manager of materials. Previously, he served in marketing and in similar production capacities at Vecta Educational Co., Kalamazoo, MI.

**Dr. Sven-Ove Dahlsson**, of Landskrona, Sweden, visited the turfgrass research project in the Department of Soil & Crop Sciences at Texas A&M University for a two-week period in June, 1978. Dr. Dahlsson is with the W. Weibull A. B. Seed Company and Weibullsholm Plant Breeding Institute where he is active in turfgrass research and education work.

The Southern Nurserymen's Association honored three individuals at their annual meeting during August in Atlanta, GA. **Fred C. Galle**, Director of Horticulture of Callaway Gardens, GA, was presented the "Porter Henegar Award for Horticultural Research". The award is given annually to the individual who, in the opinion of his fellow horticulturists, has made outstanding contributions to the nursery industry through research and has participated regularly in the association's Research Conference.

**Louis Hillenmeyer, Jr.**, Hillenmeyer Nurseries, was honored with the Slater Wight Memorial Award, the SNA's highest award for service. The award was presented to Hillenmeyer in recognition of his active participation in association activities and his contributions to the success of the nursery industry in the southern region. He currently serves on the public relations advisory committee.

**John C. Watkins**, design consultant and advertising manager of Watkins Nurseries, was honored as the 1978 recipient of the David El Laird, Sr. Memorial Award. This award is given annually in memory of Richmond David E. Laird, Sr., to recognize the young member who has made outstanding contributions to his state and regional associations.

Other association business during the annual meeting included election of new President **William J. Park**, president of Geo. W. Park Seed Co., Greenwood, SC. Park is the 74th president of the association.

# Bolens<sup>®</sup> Mulching Mowers.

## They cut the grass and the work load.

## In one pass.

■ The Bolens Mulching Mowers take care of the clippings. So your crew won't get stuck with extra clean-up. And you won't get stuck with extra costs.

■ **The unique Bolens Mulching Mower** cuts and recuts the clippings into tiny particles, and then throws them back into the turf. Providing an invisible, nitrogen-rich mulch.\* So there's no raking, bagging or hauling involved. And less lawn feeding to do. Your crew can move on to other jobs. And you'll be saving on fertilizer. ■ **Models are specially built for commercial and institutional use.** Straight-thru steel axles, rugged all-steel deck, tough one-piece handle and positive cutting height adjustment. ■ **The Bolens Chain Drive Tiller.** The tiller designed to spend long, hard hours out on the job. Not in the shop. Our 3 and 5 hp models feature fully enclosed drives that seal in the oil bath lubrication and seal out dirt. Cuts down on maintenance. And delivers plenty of power to the heavy-duty slasher tines. Or to a whole array of optional attachments that converts it to a walk-behind tractor. Controls are center-mounted on console for safety. ■ **Bolens Mulching Mowers and Chain Drive Tillers.** Built to be tough on the job. Not your crew.

See the complete line of Bolens commercial power equipment at your nearest dealer. For his name and address, call 800-447-4700 toll-free anytime (in Illinois, call 800-322-4400). FMC Corporation, Port Washington, Wisconsin 53074.



\*Proven in a 2-year study at Michigan State University. For a free copy of this study on nitrogen return, contact FMC Corporation, Port Washington, Wisconsin 53074.

Bolens Mulching Mower is a  
Trademark of FMC Corporation.  
© 1977 by FMC Corporation.

# FMC

# UNIVERSITIES USE SHREDDERS FOR RENOVATION AND COMPOSTING

Grounds maintenance at a university, particularly a large state university, requires mechanization — a considerable number of vehicles and other equipment. Tractors, loaders, mowers, spreaders, dozers, sprayers, scrapers, chippers. You wouldn't think, however, that a university would have use for a high capacity soil shredder. But several large universities have found ways to keep shredders busy and cut maintenance costs at the same time.

Two such schools are Penn State University and Georgia Institute of Technology, better known as Georgia Tech. Both are using shredders to reduce labor costs and improve the quality of grounds maintenance. Penn State has two shredders. One is used by the Joseph Valentine Turfgrass Research Center to prepare soil mixes for turfgrass experiments. The other shredder is used by the university's Landscape Operations department for a variety of construction and maintenance projects requiring clean, homogeneous soil mixes. Georgia Tech's principal use for its shredder is to convert composted leaves into "free" humus that's used for various purposes on campus grounds.

## Penn State Turf Research Center

There were few turfgrass schools in the nation in 1928 when Joseph Valentine, superintendent at Merion Golf Club in suburban Philadelphia, traveled to Penn State to ask for the same kind of support and help for turfgrass problems that farm research was getting from the school. He apparently was a good salesman because a turfgrass program was started the following year. Through Joseph Valentine's continuing efforts, the school was sup-

ported through the difficult years of the Depression by state appropriations for turf research.

In 1932, the school started the academic phase of turfgrass management by accepting the first students. Then, in 1967, Penn State officially named the turfgrass facilities the Joseph Valentine Turfgrass Research Center. Today, Penn State's Turfgrass Center in University Park is part of the Department of Agronomy and provides teaching and research programs on turf breeding, management, physiology, fertilization, soil physics, and weed control. Disease studies are done in cooperation with the Department of Plant Pathology.

Dr. Joseph Duich has headed the program at the Valentine Center since 1959. "A good proportion of students in our turf program are here because they want to be golf course superintendents," Duich says. "We try to teach them the basics they need to know to do that job well. Our studies dwell on the different types of grasses, soil chemistry, and soil physics, particularly from the point of modifying soils to achieve certain ends. We also stress disease and insect control."

At this time, the Valentine Turfgrass Center has approximately 110,000 square feet of close cut turfgrass devoted to its experimental bentgrass research program. Most of it is cut to putting green height because a large part of the school's current program involves putting greens research. Because the turfgrass research area isn't that large, its use must be managed wisely. After an experiment is completed, the area must be reconditioned quickly to make it suitable for the next round of experiments.

Reconditioning is necessary because of the nature of the experimental work. Fertilizer experiments, for example, might run continuously for four or five years. After the research, the area is checkered with hundreds of 6 by 16 ft. plots, all with different fertilizer and pH levels. To put the plots back into condition for more research, the entire area has to be dug up and all of the soil shredded and aerated.

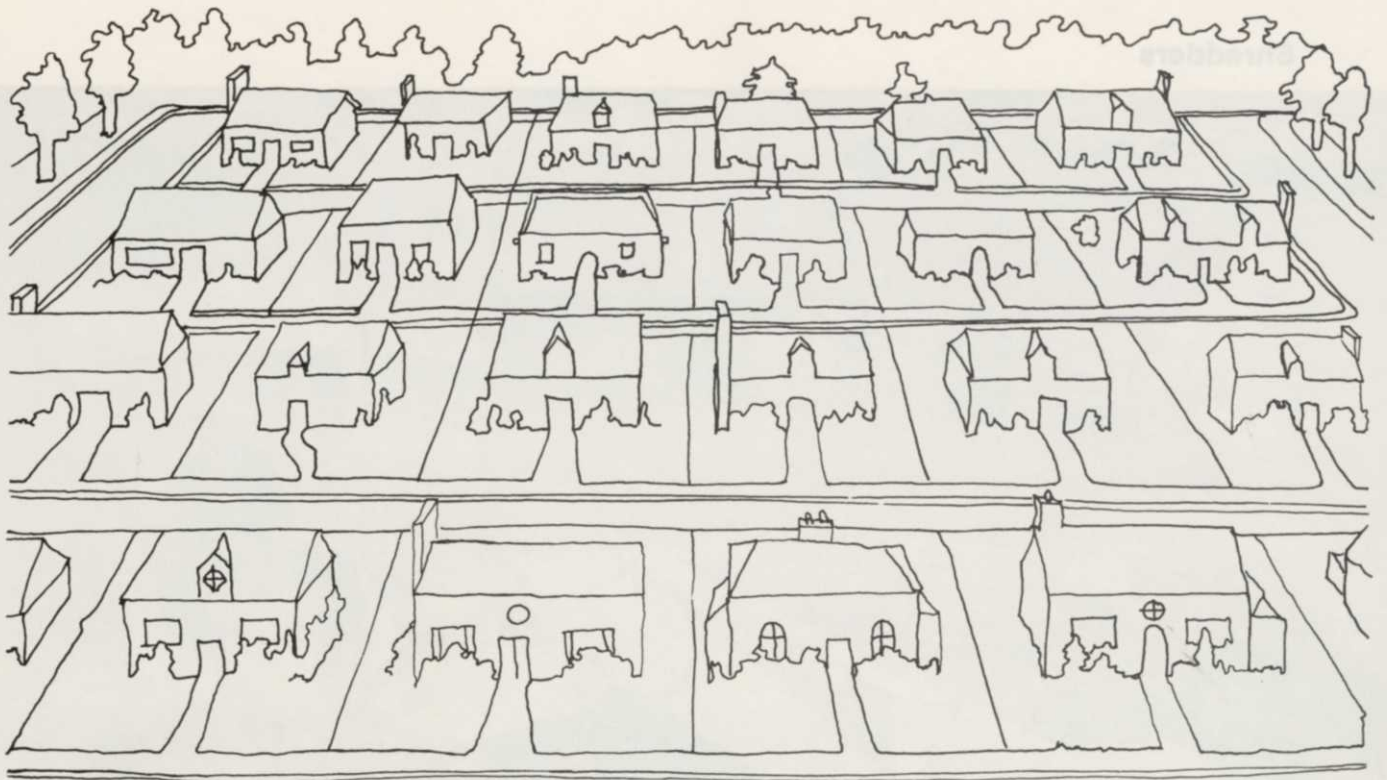
The Valentine Center attacks this reconditioning by first rotovating the entire area to a depth of approximately six inches. Then loaders push the loosened soil into large piles. Next, the loaders dump the soil into a shredder for processing — shredding, mixing, separating non-shreddable material, and aerating. Because superfine soil mixes are needed for the reconditioning, the processed soil goes directly from the shredder into a powered screen. What the Turf Center ends up with is a homogenous soil mix from which nearly all stones have been removed. This results in an ideal base for turf research.

"We recently reconditioned about half our bentgrass research area," says Duich. "The soil



After turf experiments are completed, the top six inches of soil are removed, reconditioned and then replaced. During reconditioning the soil is shredded and screened.

Continues on page 18



# Your lawn service can really grow with Nitroform.<sup>®</sup>

If you run a lawn service, you can expect to grow faster than grass after a May shower. As cost for seed, fertilizer, chemicals and equipment continue to go up, home owners are looking for a way out. They learn quickly that a lawn care service can do the job for less with guaranteed results. This means increased demand for your services.

As you grow, you need the most efficient technology. That's where Nitroform<sup>®</sup> slow-release nitrogen can help. It fits

the economics. It's also the best way to apply long-lasting nitrogen... whether your equipment is for liquid or dry application. Nitroform is available as granular Blue Chip<sup>®</sup> or as Powder Blue<sup>™</sup> sprayable slow-release nitrogen. Nitroform gives uniform coverage, and it's compatible with most other lawn care materials, including pesticides.

Nitroform is the quality slow-release nitrogen. It keeps feeding long after your crew has moved to other jobs. It's nonleaching... nonburning. Even inexperienced labor can apply it.

Predictable performance... easy application... dependable results. That's Nitroform. For more information, write: Agricultural Chemicals, Hercules Incorporated, Wilmington, Delaware 19899. Phone: 302/575-5000.



**HERCULES INCORPORATED**

®Registered Trademark of Hercules Incorporated/™Trademark of Hercules Incorporated

STH-78-5R

## Shredders



**Georgia Tech grounds crew** takes leaves from oldest part of the compost pile for shredding and use on campus.

from a 50,000 square foot plot containing 243 different mixtures was shredded, aerated and screened so that it was all uniform to a depth of 12 inches. We wanted the soil to be as similar as possible to the modified soils found on most golf tees and greens. Because the shredder made the work so easy, we were even able to process a large supply of the same soil and set it aside in a protected bin for topdressing the turf later in the experiment. The research requires that the topdressing be exactly the same as the soil base."

Because so many new homes are built on plots from which all topsoil has been removed, Penn State is also getting involved in research on growing turf on subsoil. Many new homeowners try to establish high fertility grasses on such soils and the grasses don't do well. For that reason, the school is continually involved in research to develop low-maintenance grasses that can tolerate less than ideal conditions. In these homeowner turf programs, soil reconditioning follows the same soil processing procedures used for other plots in order to have uniform soil for research.

Penn State's turfgrass research programs have already paid off with the development of Pennlawn, Pennfine and Penncross grasses, soil modification procedures, and various management aids.

Shredding, mixing, cleaning, and aerating soil without harming its mechanical properties is vital to turf research. "We prefer a belt-type shredder to a hammermill because it does not pulverize the

soil," Duich says. "If the soil is dry, a hammermill can destroy the mechanical properties by turning it to dust. By the same token, we purchase fibrous peat to mix with topsoil to construct new plots. We use fibrous peat precisely because it is so structured. If we try to mix fibrous peat and topsoil with a hammermill, it would pulverize the peat and reduce its effectiveness."

Methods to produce modified soil mixes for construction or renovation of golf tees and greens are stressed in the turfgrass program's curriculum. "No longer do we spread topsoil over a green and plant grass," says Duich. "We teach our students to analyze their situation and then mix the proper soil to suit the particular conditions. They can see how easily we do this work here on campus with a soil shredder, and I'm sure they will make use of shredders when they are called on to renovate areas under their responsibility."

### Campus Maintenance

The main campus of Penn State is situated on a 4936-acre tract of land in the geographic center of Pennsylvania. Approximately 540 intensely landscaped acres of this tract make up the central campus. Streets, athletic fields and landscaped areas are maintained by the University's Landscape Operations. Penn State's Landscape Operations uses a shredder for a wide variety of jobs. According to Dave Rice, who heads up Landscape Operations, "The shredder is in operation approximately 50 to 60 days per year."



On a campus as large as Penn State's, there is usually a building under construction or a utility ditch being dug. Normally, whenever a trench is opened, the soil is stored off-site while the work is in progress. Once the work is completed, a final layer of shredded and cleaned topsoil is spread over the dug up area. This saves the time-consuming labor required to rake out stones prior to re-planting grass.

Landscape Operations also uses the shredder to convert composted leaves to a beneficial leafmold humus for its flower beds and for mixing 2/1/1 with topsoil and sand for topdressing. Leaves are usually stored for approximately 3 to 5 years and then shredded.

Clay and sand for topdressing baseball fields are also processed by the shredder. The sand often has large rocks in it that must be removed and the shredder both cleans and mixes the dressing to the correct consistency.

The school's greenhouses and mushroom growing operations often call on Landscape Operations to provide clean soil mixes for their needs. This replaces a time-consuming hand screening operation used previously to get suitable growing media.

"The shredder has spoiled many of our people," says Rice. "Since they have experienced working with shredded and mixed soils, they don't want to put up with the stones and lumps in unprocessed soils. When they have a certain job to do, like reseeding a turf area, they want the soil processed so that all that has to be done is to put the soil down and level it."

Maintenance on the school's athletic fields keeps the shredder busy cleaning soil. Hundreds of tons of topsoil are processed each year just for this purpose. By not purchasing processed topsoil, Landscape Operations saves the University an estimated \$35/cubic yard.

### Georgia Tech

David K. Walker, Jr., is the staff horticulturist at Georgia Tech. Through his efforts, recycling programs have been started that aid the City of Atlanta and also benefit the school by reducing reliance on purchased mulches and soil amendments.

Walker believes that grounds maintenance people have to switch their thinking about some things. "We've got resources around us, like leaves and tree trimmings, but it's up to us to turn them into something useful, says Walker. "I've based my leaf and wood chip recycling programs on putting to good use what we used to pay to get rid of."

"Up to now," Walker says, "the easiest answer to a trash situation was to say, 'Let's throw it away.' That was the cheapest way to dispose of it. Then we began to realize that grass clippings, leaves and wood chips have nutrients and other qualities that can be beneficial to our grounds maintenance operations. It began to dawn on us that we were disposing of certain materials and then turning around and purchasing materials that were similar."

Georgia Tech's downtown Atlanta campus occupies 350 acres, or about 10 square blocks. Fine residential properties and businesses surround the school and keeping the grounds attractive is an important job.

Atlanta has a wealth of trees, with oaks and elms predominant. The annual leaf fall used to be trucked by city crews to landfill sites 10 or 20 miles from their pickup points. That was until Georgia Tech's Walker contacted city officials and told them he'd be happy to provide a free, close-by dumping place for a large portion of Atlanta's leaves.

Walker had recognized the value of leaf compost to the school's grounds maintenance operation and knew that he needed more leaves than accumulated on campus each year. With buildings and parking lots occupying a large proportion of the school's property, Georgia Tech's own leaf collection operation is not a big one. The school's vacuum sweeper and street sweeper collect about 300 cubic yards each fall. The city, however, more than makes up for the school's lack of leaves. Each fall city crews deliver about 1500 cubic yards of compacted leaves to the school's leaf composting area.

Georgia Tech's present leaf composting area occupies a 1 $\frac{3}{4}$ -acre lot that someday will serve as a building site. It is well drained so that stagnant water never causes undesirable odors or mosquito problems.

"We employ a lazy man's approach to composting," says Walker. "Unlike some composting operations which windrow leaves and turn them regularly to speed decomposition, we turn the leaves only once. We do it about a month to six weeks after they are delivered. At that time, our people use a front-end loader or a bulldozer to lift and tumble the leaves and mix in a little of our good red Georgia clay. The leaves are left in a big pile until we need them. If the leaves sit there two years before we get around to shredding them, there's no problem. We simply work off the oldest part of the pile where the leaves are the most decomposed."

"We had to go through a learning cycle with our leaf composting program," says Walker. "We knew we had to shred the compost to get it to a particle size suitable for mulch, for mixing with top soil for lawn renovation, and for potting plants in our greenhouse operation. We tried to find the smallest and cheapest unit that could do the job. However, the 5 hp shredder we bought didn't have the capacity we needed. We now have a 18 hp shredder that handles up to 25 cubic yards per hour. Running it for a full work day gives us 200 cubic yards of material, a worthwhile amount to work with."

Georgia Tech's shredding crew consists of three men. One operates the front-end loader which feeds the composted leaves into the shredder's hopper. Another is positioned on the operating bridge of the shredder to watch over the operation of the machine and to keep the material falling freely onto the belt. The third man works on the

# HI-RANGER®



## PRODUCTIVE

Proven by owners for line clearing efficiency, and preferred by operators for precise tower control and bucket positioning. HI-RANGERS are No. 1 in utility and contractor preference for insulated aerial man-lifts. Patented HI-RANGER "3D" one-hand control, hydraulic tool line options, chip boxes, and other features may benefit your operations. Write for "4F-5F CATALOG".

HI-RANGER Aerial Towers meet the "American National Standard for Vehicle-Mounted Elevating and Rotating Work Platforms ANSI A92.2-1969," as required by the Williams-Steiger Occupational Safety and Health Act of 1970; Part 1910, Occupational Safety and Health Standards; Section 1910.67; Part 1926, Safety and Health Regulations for Construction; Sections 1926.451 (f), 1926.556, 1926.952 (b), and 1926.955 (e), as applicable.

SINCE 1950

HI-RANGER



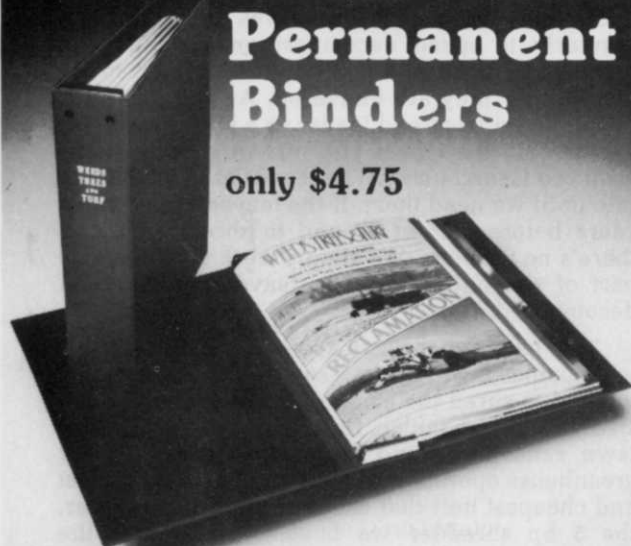
MOBILE AERIAL TOWERS, INC./Dept. N/2314 BOWSER AVE./FORT WAYNE, IND. 46803

Circle 105 on free information card

Preserve Your Copies of  
**WEEDS, TREES & TURF** in

**Permanent  
Binders**

only \$4.75



Custom-made binder easily holds entire year's copies of WTT magazine. Green binder with gold embossed logo protects your magazines and gives your library a neat appearance. Magazines can be inserted as they are received. Annual index in December issue makes it easy to find information you need quickly . . . Send check or money order to:

**WEEDS TREES & TURF**

9800 Detroit Ave.  
Cleveland, Ohio 44102

## Shredders

ground and tries to keep large debris such as tree limbs and construction materials out of the way. The shredder processes the composted leaves and discharges the finished product directly into a dump truck. Since the composting area does not permit on-site storage of equipment, the crew tows the shredder back to the garage after they are finished for the day.

"You have to consider the economics of what we're doing," says Walker. "We get the leaves free. We save both the school and the city money because there are no hauling and dumping fees charged. We also save on labor, fuel, and wear and tear on our trucks since they don't have to travel to dumps.

"We shred the leaves when we need them, mostly during the late spring and summer months. I estimate we have a stockpile of about 2,000 cubic yards of compost on site. At the going rate of \$7 per cubic yard for equivalent material, we own \$14,000 worth of material. These numbers are very attractive to our operation. So far, we haven't had to buy any topsoil since we began our composting program. Previously, we purchased up to 4000 bales per year of pine straw and other materials."

For mulching around shrubbery and flower beds, Georgia Tech's grounds crew applies a four-to-six-inch layer of wood chips and the leaves which drop to the ground each year are allowed to remain in place as extra compost. The chips are acquired in the same way the leaves are. The school has provided an all-weather free dumping area for local landscapers and tree surgeons to dump their chips. Almost 30,000 cubic yards of chips have been given to the school since 1971.

As part of a current research project, Walker is dumping leaves directly on a wide highway median strip to study how this affects renaturalization. He hopes the study will yield results on new ways to stabilize soil in problem areas. Other benefits anticipated are: reduced labor costs for maintenance; elimination of leaf blowing by passing traffic; increased moisture retention for shrubbery and trees, and regeneration of a natural flora from seeds brought in with the dumped leaves. The leaves are spread to a variable thickness ranging from 6 to 12 inches and are allowed to settle by natural means (wind shift and rain). Some portions of the median have been covered with a two-to-three-inch layer of wood chips to minimize the chance of fire during hot, dry weather.

A recent project called for shredding of 300 cubic yards of compost to be incorporated into the soil for a new four-acre athletic field. The availability of shredded compost eliminated the need to buy peat moss. Walker estimates that nearly one-quarter of the shredder's cost was amortized by this single project.

The success of Walker's composting program has been recognized by the Georgia Chapter of the American Soil Conservation Society, which recently gave the school its Merit Award. If imitation is the sincerest form of flattery, then the city of Atlanta thinks the program is a good one, too. The city has begun its own composting operation and is using the finished material in its parks. **WTT**