

Which one will cost you less?

If you're only concerned with initial equipment costs, then the obvious answer is the sod shovel.

But the real cost of cutting sod also includes the labor time involved. And at today's wages, elbow grease can be a very expensive accessory.

That's why the Ryan Jr. Sod Cutter makes sense for even the smallest turf management operations.

Working at up to 135 feet per minute, one man can cut more sod in an hour than six men used to cut by hand in six hours. Add up the labor cost savings and you begin to see the Jr. Sod Cutter might easily pay for itself in just one season.

But the Jr. Sod Cutter also lets you take advantage of the benefits of sodding versus seeding. You can replace dead grass or plant a new stand almost instantly, preventing erosion and

enhancing the appearance of your grounds.

The Jr. Sod Cutter is self-propelled, simple to use and easy to handle. And like all Ryan equipment, it's built to last. You may never need a replacement.

So whether you manage a

small golf course, cemetery, landscape service, school grounds, industrial complex, or park, the Jr. Sod Cutter can help you trim costs.

Write for your Ryan catalog today. And find out more about all the time-and money-saving equipment Ryan offers.



Ryan Jr. Sod Cutter The turfman's timesaver.

RYAN
TURF-CARE
EQUIPMENT

OMC-Lincoln, a Division of
Outboard Marine Corporation
6616 Cushman Drive
P.O. Box 82409
Lincoln, NB 68501

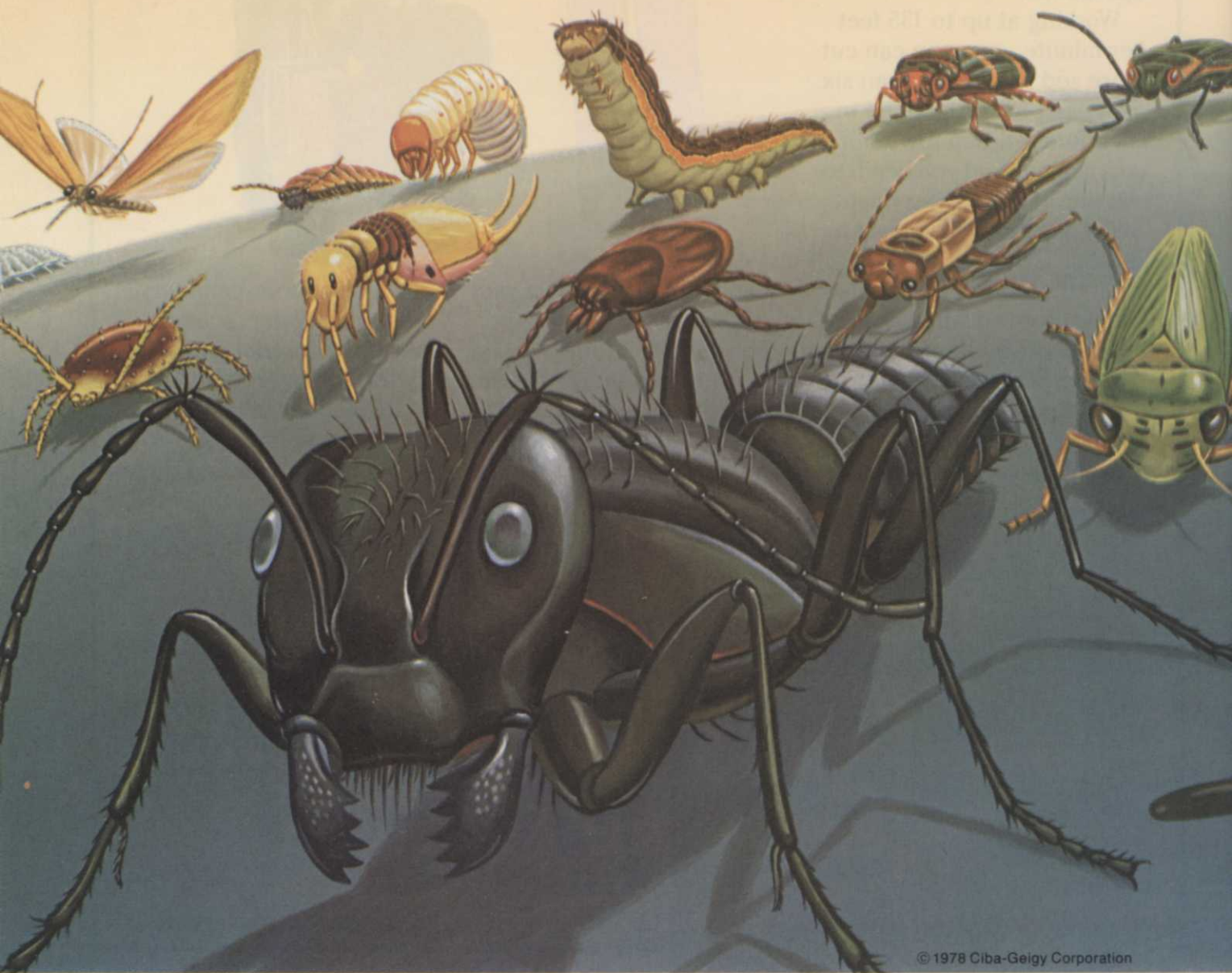
Diazinon is labeled for How many will you

Diazinon® not only controls,
but is labeled for more turf insects
than any other turf insecticide.

Just take a look, it's the biggest

label in the business.

You'll count 24 turf insects in
all. Including white grubs, sod
webworms, cutworms, chinch bugs,



© 1978 Ciba-Geigy Corporation

every insect on this page. face this season?

armyworms and ants.

This season, be sure to ask your
local supplier for Diazinon.

And put the biggest label in the

business to work for you.

Ciba-Geigy, Ag. Div., Box
11422, Greensboro, NC 27409

Diazinon by CIBA-GEIGY
The biggest label in the business.



CIBA-GEIGY

WT&T

PRODUCTS



POWERFUL DIESEL TRACTOR features 12 speeds (3 in reverse), quiet operation, and two or four-wheel drive. The 25-hp Bull, by Satoh Agricultural Machine Mfg. Co., has a two-cylinder, water cooled, overhead valve engine and hydraulics that are live with position

control, flow control, and lift lock. Operator station emphasizes comfort and easy control.

Circle 701 on free information card



TOW-BEHIND SWEEPER from Sweepster Inc. can be towed by truck, tractor, or other utility vehicle to sweep paved areas. The TP-60 can be towed at highway speeds for fast transport and is designed for quick change to towing vehicle. Brush is

powered from the prime mover PTO. Mechanical or hydraulic brush drives are available for various applications. Over-the-brush pickup simplifies operation and hydraulic dumping of hopper increases efficiency.

Circle 702 on free information card



SKID MOUNTED SPRAYERS for high-volume field operation and road speed efficiency is made by Ag-Chem Equipment Co. Tank size varies from a 300-gal. polymer tank,

Most good golf courses, parks and home lawns have something in common — FINE LEAFED FESCUE

Oregon Fine Fescue - thrives in shady areas, does well in dry spells, germinates fast and blends well. Its straight-growing habit holds the grass up for even mowing, and Oregon grown Red Fescue even creeps to cover the spots left when other grasses fail.



Oregon Fine Fescue the grass seed on which
the best mixes are built.

For a brochure and sample, write: Oregon Fine Fescue 1349 Capitol N.E. Salem, Oregon 97303

Twenty-three ways to help assure your company's future.

If you believe that a continuous flow of new ideas is absolutely necessary to assure your company's future—and the future of the country as well—then you'd better send for this free booklet today.

It describes twenty-three different ways you can help guarantee a continuous flow of college-trained minds and college-based research—minds and research that have been responsible for many of the most important ideas of our

times. Computers. Radio. Television. Synthetics. Antibiotics. The list is almost endless.

If new ideas foster the continued growth of business, then business must be willing to foster the growth of ideas. By giving to the college of its choice. Think of it as an investment in your R. & D. Program. For twenty-three smart ways to make this investment, send in the coupon.

**CF
AE** Council for Financial Aid to Education, Inc.
680 Fifth Avenue, New York, N.Y. 10019

Please send me a copy of your booklet, "How Corporations Can Aid Colleges and Universities."

Name _____

Title _____

Company _____

State _____ Zip _____

Tel. _____

**CF
AE**

HOW CORPORATIONS CAN AID
COLLEGES AND UNIVERSITIES

Published by the COUNCIL FOR FINANCIAL AID TO EDUCATION

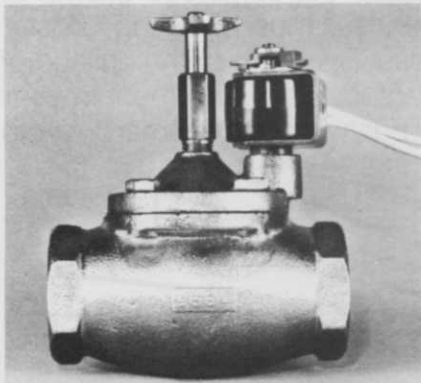
A Public Service of This Magazine
& The Advertising Council.

**Ad
Council**

**Make America smarter.
Give to the college of your choice.**

a 400-gal. polymer or stainless tank, and a 500-gal. stainless tank. All tanks feature large fill holes, full-length stainless steel sparger for chemical agitation, and large gathering sump for complete emptying. Sprayer unit fits in almost any pickup truck bed and has adjustable controls.

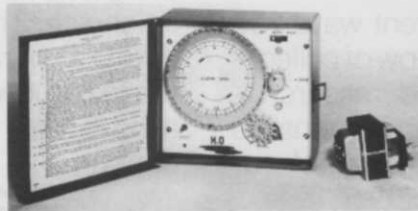
Circle 703 on free information card



ELECTRIC DIAPHRAGM VALVE

from Johns-Manville has no minimum flow restrictions and uses a three-way solenoid operation. Series 930 valve is available in five models for various irrigation uses. Solenoid operation is designed to eliminate continuous internal flow, reduce the chance of malfunction, and reduce the incidence of water hammer. Valve is grit resistant and includes a water filter for longer wear.

Circle 704 on free information card



IRRIGATION CONTROLLER from Batrow Inc. is designed specifically for residential and commercial applications. Model 111-12 can control up to 11 zones with timing up to

several hours per zone. Controller features a heavy gauge steel cabinet with lockable cover and a hinged control panel for easy access in installation and service.

Circle 705 on free information card



ONE-MAN EARTH DRILL by Ground Hog Inc. eliminates torque kickback by using a right-angle drive line, which permits drilling close to walls and fences. Handle bars swing to three positions for normal drilling,

VERMEER:



Nobody offers you more ways to increase productivity and reduce land improvement expenses than Vermeer.



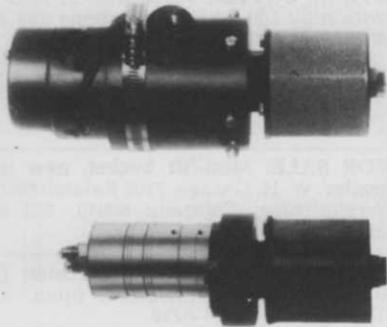
Vermeer Tree Spades. Patented tree-moving/tree-packaging machines that automatically dig, ball, transport and replant shrubs and trees up to 25 ft. in height. Tractor-mounted, trailer-mounted, or truck-mounted units—plus complete multi-purpose landscaping machines that handle a tremendous assortment of dirt-handling functions in addition to transplanting trees.



Vermeer Trenchers. Multi-purpose underground machines with a wide variety of money-saving dirt-handling attachments. On tracks or rubber tires. With power ranges from 18 to 195 hp. With digging capacities of 4-36 in. wide, down to 12 ft. deep. Vermeer Vibratory Plows, for installing cable directly underground without damaging finished surfaces or landscapes.

close drilling, and easy repositioning when auger is attached. Model 1M drill features a 5-hp engine, 4-ft. drilling depth, 16-in. tires, and augers in diameters from 2 to 12 in.

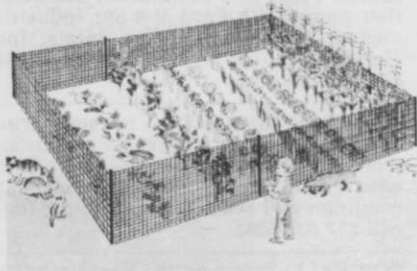
Circle 706 on free information card



SPRAY HEADS provide precise control of droplet sizes through a selection of replaceable porous sleeve assemblies. Models 360 and 361 Beecomist heads from Beeco Products Co. will deliver fluid sprays, wettable powders, and heavy flowable

sprays in 20-100 micron droplets. Delivery rate of 1 oz. to 8 gal. per min. permits decreased loads, use of smaller equipment, and greater efficiency. Hydraulic or electric drive is available.

Circle 707 on free information card



TEMPORARY FENCING by Ross Daniels Inc. is made of nonburning plastic mesh that can be attached to stakes for lawn protection. Each package of fencing measures 50 x 3 ft, costs less than half that of metal fencing, and is reusable.

Circle 708 on free information card



HERBICIDE APPLICATOR from Vandermolen Corp. uses a ribbed roller alongside shrubbery to prevent drift of weed killer into adjacent plants. Roller coats and flattens entire weed surface for even spreading. Model BP27 Driftmaster has a 5½-gal high density polyethylene tank.

Circle 709 on free information card

BIG SAVER



Vermeer Stump Cutters. Fastest, easiest, most economical method of removing tree stumps. With four powerful machines, each equipped with a big hydraulically controlled cutting wheel that actually chews even large stumps to chips 6-24 in. below the surface . . . in minutes!



Vermeer Root Cutter. A great preventative maintenance machine that severs tree roots before they buckle sidewalks or streets. Vermeer Log Splitters, available as self-contained units or designed to operate off the



hydraulic system of your tractor. Instant firewood . . . with 22,000 lbs. of force.

Sure, We Demonstrate . . . Ask Us!

Vermeer



THE DIGGIN' DUTCHMAN

6104 NEW SHARON RD. • PELLA, IOWA 50219 • (515) 628-3141

Circle 132 on free information card

APRIL 1978/WEEDS TREES & TURF

97

CLASSIFIEDS

When answering ads where box number only is given, please address as follows: Box number, c/o Weeds Trees and Turf, Dorothy Lowe, Box 6951, Cleveland, Ohio 44101.

Rates: All classifications 65¢ per word. Box number, \$1. All classified ads must be received by Publisher the 5th of the month preceding publication date and be accompanied by cash or money order covering full payment. Mail ad copy to: Dorothy Lowe, Weeds, Trees & Turf, P.O. Box 6951, Cleveland, Ohio 44101.

USED EQUIPMENT

2 — 50' AERIAL BASKETS, brush chipper, stump cutter, 2 sprayers, small crane. Parkway Tree Service, 12026 West Cherry St., Wauwatosa, Wisconsin 53226. 414 257-1555.

FOR SATE — 1975 Vermeer TS-22" tree spade. Mounts on Bobcat or 3 pt. hitch. Excellent condition. \$1800.00. 1976 Care tree 30" tree spade. Mounts on Bobcat or 3 pt. hitch. Mint condition. \$2995.00. 1976 Care tree 36" tree spade. Mounts on 990 Bobcat, tractor, loader, or dozer. Mint condition. \$4495.00. 1972 Vermeer TS-44T tree spade on 1974 GMC 1 ton. New spades. Good condition. \$7800.00. Will send photographs upon request. Call or write: Spartan™ Tree Transplanting Equipment Company, 16084 S. Chandler Rd., East Lansing, Michigan 48823. Phone

517 351-1370. (We buy, sell, and repair high quality tree transplanting equipment).

FOR SALE: Two Ryan 18" sod cutters, automatic cut off, \$600.00 each. Two 18" sod rollers, good working condition, \$250.00 each. One Rainmaster 6x6 irrigation pump with Ford V-8 391 industrial engine, \$2,500.00. Mueller Farms, Inc., Huntley, Illinois, 815 923-4368 days. 312 669-5794 nights.

FOR SALE: 1976 GMC 1½ ton spray truck w/1000 gallon tank, Meyers multistage pump, hose, and hose reel. This truck with only 13,000 miles on it is in excellent condition and ready to spray! For details call 217 529-5692.

FOR SALE: Brouwer 16" harvester with Massey tractor, very good condition, asking \$10,000; Del Zotto 28" front mounted tree transplanter, new, \$3,000. Tom Selstad, Selstad Soil Service, R1 West, Box 43, Great Falls, Montana 59401. 406 452-5158.

JACOBSEN SEEDER, model 524-100, 21 inch width, self-propelled, new condition, \$1,200. Jim Dunlap, 23 Haines Mill Road, Delran, N.J. 08075. 609 461-8694.

USED CHIPPERS, SKYWORKERS and hydro-ax's. Please call P. C. Gould Sales Company, Box 178, Essex, Connecticut 06426. 203 767-1636 Phil or Jeff Gould.

STUMP CUTTER VERMEER MODEL 10 with only 100 hours. Telephone 203 261-4806, Connecticut, after 6:00 at night.

USED 72" Hustler and Jacobson F 133 five gang mower, both in excellent condition. Call 707 642-2525.

FOR SALE: Mini-lift bucket, new with trailer. W. H. Garage, 7102 Raleigh Street, Westminster, Colorado 80030. 303 428-2174.

SELLING NEARLY NEW Princeton Tow Boy harvester, \$11,000.00, open. Ted Thompson 412 961-0238.

FOR SALE: Clean CL-15 Vermeer vibratory cable plow and boring attachment. \$1,875.00. Phone 517 448-2980, Swanson Spray, Hudson, Michigan.

Continues on page 100

Weed-eating fish cleans lakes.



For 2,000 years, the Amur has been used to keep lakes and ponds clear of choking weeds and smothering algae. It's the only fish in the world which lives exclusively on weeds, grass and algae. Tested in America for over 12 years, the Amur has proven successful in golf course ponds, reservoirs and small lakes. And at far less cost than expensive repeated chemical applications. For details, call or write Bill Whiting, general manager, (501) 942-2515.

SEA RANCH, INC.

Aquatic vegetation control is our only business. Route 2 • Box 604 • Sheridan, Arkansas 72150

Making higher profits is a grind.



Stump the competition with a Levo Stump Grinder

Your business will put more money in the bank when you add a dependable Levo Stump Grinder to your equipment stable! Tow it to the job behind any vehicle and it will cut any diameter stump from four feet high to two feet below the ground! It's fast, efficient . . . and safe! For a personal demonstration, just drop us a note. Better yet, call us today. We'll be glad to show how your company can turn a profit with this money-making eager beaver! After all, we want to sell you more than just a machine; we want to sell you a profitable business!




SPARTAN™ TREE EQUIPMENT CO.

16084 S. Chandler Rd. East Lansing, MI 48823 Phone: 517/351-1370

Offering a complete line of tree & landscape equipment: Big John Tree Transplanters • Newman Tree Frames & Trailers • CareTree Systems • Levo Stump Cutters • Cobra Air Hammers • Owatonna Loaders • Dakota Trailers • Chipmores Chippers

Circle 106 on free information card

Circle 113 on free information card



**Now, rid
your lake of
unwanted
water weeds
and algae.**

Recreational lakes, ponds and streams are meant to be fun places. Not choked with unwanted water weeds or ugly algae.

Now, Pennwalt offers two great aquatic herbicides that clean up these problems—fast and effectively.

Meet Aquathol® K and Hydrothol® 191 aquatic herbicides. Aquathol K is available as a liquid or granular. It controls weeds efficiently and quickly. In fact, you can swim in lakes treated with Aquathol K 24 hours after application. And treated water can be used immediately for golf course irrigation without harm to bentgrass turf. Hydrothol 191 does even more. It controls both weeds and algae. And after treatment, there's no waiting period for swimming. Put Aquathol K or Hydrothol 191 to work for you.

For a cleaner, prettier lake, For more information, contact AGCHEM DIVISION, PENNWALT CORPORATION, 1630 E. SHAW AVE., FRESNO, CALIFORNIA 93710 (209) 226-8400

All pesticides can be harmful. Read the label carefully and use only as directed.

 **PENNWALT**
CHEMICALS • EQUIPMENT
HEALTH PRODUCTS

SEEDS

SOD QUALITY Seeds: Adelphi, Glade, Cheri, Nugget, Merion, Flyking, Majestic, Baron & Touchdown bluegrasses, also fine fescues, Manhattan ryegrass. Custom mixing available. Michigan State Seed Co., Grand Ledge, Michigan 48837. Phone 517 627-2164.

HELP WANTED

GOLF COURSE TURF PROFESSIONALS: An opportunity to sell ProTurf® products. ProTurf Division of O.M. Scott & Sons, the nation's leading manufacturer and marketer of professional turf products, has openings for Technical Representatives in several territories. The Tech Reps selected will call on golf course superintendents, requiring a knowledge of turf management and an understanding of these professionals' needs. Applicant should have a BS degree or equivalent in one of the agronomic sciences. Excellent starting salary plus bonus, automobile, and a comprehensive benefits program at no cost to employees go along with these positions. Send resume in confidence to Dick Stahl, Director of ProTurf, O.M. Scott & Sons, Marysville, Ohio 43040. An equal opportunity employer.

PARK MAINTENANCE SUPERVISOR — Pasadena, California (population 113,000). Salary — middle \$20,000 annually. Requires B.A. in park management/administration or related field, four years of progressively responsible experience in park or landscape management, two years of which must have been in a supervisory capacity and possession of California driver license. (Two years additional related experience may substitute for up to two years of education with an A.A. in park management/administration). Landscape management experience must include knowledge of proper use and control of pesticides and herbicides, maintenance of turf, trees, and shrubs, and of irrigation systems. Apply immediately to Personnel Department, City of Pasadena, 100 N. Garfield Avenue, Pasadena, California 91109. Phone 213 577-4366.

SUPERINTENDENT: A quality midwest cemetery organization requires the services of an outside man with leadership

experienced of at least 5 years to super-vised land development, maintenance of turf, nursery materials, buildings and fleet equipment and handling of interment services by personnel. 100 acres, half developed; population of community 400,000. The individual will do his own hiring and earn \$15,000 to \$20,000 per year depending on qualification, plus full employee benefits. Please send resume in detail to Box 190, Weeds, Trees and Turf, Box 6951, Cleveland, Ohio 44101.

ASSISTANT SUPERINTENDENT or grounds foreman: Attractive memorial gardens located in north midwest has an excellent opportunity for an experienced assistant superintendent or a grounds foreman. Applicant should have a minimum of five years cemetery experience and at least two years in a supervisory position. All inquiries strictly confidential. Please send resume to Box 191, Weeds, Trees and Turf, Box 6951, Cleveland, Ohio 44101.

ASSISTANT MANAGER for mid-western sod farm. Will train but some sales or management experience necessary. Send resume including salary requirements to Box 188, Weeds, Trees and Turf, Box 6951, Cleveland, Ohio 44101.

OPERATIONS MANAGER — must have experience in planning, scheduling, and supervision of field crews, preferably in non-agricultural herbicide application. Other responsibilities: personnel function and overall equipment maintenance. Considerable travel with 4-state territory required. Unlimited opportunity with growing herbicide application firm, doing business primarily with state and county highways and utilities. Contact: Lex Dalton, Dalton Gang, Box 246, Warsaw, Indiana 46580.

LANDSCAPE-LAWN CARE ESTIMATOR-SALESMAN. Opportunity for advancement with established firm offering landscape and turf care services. Salary and liberal fringes. Experience in direct selling and job cost estimating essential. Send resume to: Jeff Kahnke, Vice President, Tree Service, Inc., 6000 W. 78th Street, Edina, Minn. 55435.

TEXAS, Dallas and Houston. Licensed Landscape Architect needed. Experience in private offices desired. Position in design/build firm; salary negotiable with experience. Full benefits. Please send resume, photograph, and samples of your work to Landscape Design & Construction, Inc., 2559 Southwell, Dallas, TX 75229.

LANDSCAPE SUPERVISOR (City of Santa Clara). Parkways and Boulevards Division head, Street Department. A.A. degree in Horticulture and 5 years experience. Other education and experience patterns may substitute. Salary open. Send resumes to Testing Division Office, 1500 Warburton Avenue, Santa Clara, Calif. 95050. Telephone 408 984-3040.

FOR SALE

RAILROAD TIES. 5,000 No. 1 landscaping ties banded in stacks of 25. Excellent condition, not split or rotted. We make immediate delivery in minimum loads of 250 anywhere in U.S. Inquiries welcomed 8:00 A.M. to 5:00 P.M. Monday thru Saturday. Midwest Railroad Tie Sales, 541 S. Range Line Road, Carmel, Ind. 46032. Phone 317 844-7620.

1977 TORO GMT 200 TRACTOR (with the following attachments): 48" rotary mower, cab enclosure, catalytic heater, 42" snowthrower, wheel weights, one set of tire chains. One year old, 226 hours, excellent condition. Purchased \$5,800.00, asking \$4,600.00. Please contact or call: Manager, Park Meadows Home Association, 4153 West College Avenue, Milwaukee, Wisconsin 53221. 414 421-0061.

MAKE BIG MONEY with biggest efficient tank truck sprayer, 1800 gallon, livetime, double stainless oval tank with insulation, 60 G.P.M. high pressure F.M.C. pump, Wisconsin engine and more. Doubles as water or chemical tanker or other uses. Save now. Paul Bunyan Mfg. 603 Union Road, R2, Lebanon, Ohio 45036. 513 424-1051.

LAWN-GARDEN-FEED STORE. Grossing \$300,000.00 yearly. Sales, service, parts. Excellent location, east of Cleveland, Ohio. Business only \$40,000.00 plus inventory of approximately \$60,000.00. Send inquiries to Box 194, Weeds, Trees & Turf, Box 6951, Cleveland, Ohio 44101.

FOR SALE — Complete tree service company 23 years in business New England area. Equipment modern and good condition. Excellent clientele. Box 192, Weeds, Trees and Turf, Box 6951, Cleveland, Ohio 44101.

FOR SALE: Landscape contract business. Snow removal in winter. Can be bought on contract for deed. Write to: Morris Landscape Contractors, Stonehedge, Winona, MN 55987.

NEW! AQUAPROBE



Sub-Soil Moisture Tester

AQUAPROBE takes the guesswork out of soil moisture testing. Scientifically measures moisture at depths from 2 to 26 inches. No digging; no fixed point of measurement. Amazingly light-weight, portable and easy to use. Aquaprobe is low in cost, too. Write:

HOWARD S. CRANE, INC.
Oneida, N.Y. 13421

WATCH FOR SPECIAL WEEDS TREES & TURF CIRCULATION OFFER IN YOUR MAIL THIS MONTH!

Circle 168 on free information card

100 WEEDS TREES & TURF/APRIL 1978

◆ For ad on preceding page circle 104 on free information card