

From a  
Bird's Eye View

# PENNCROSS

CREeping BENTGRASS

Looks Greater,  
Putts Straighter

The putting grass superintendents  
prefer. Easy to establish,  
lower maintenance costs.

Elkhorn Valley  
Golf Course  
Mehama, Oregon

FOR FREE TURFGUIDE, WRITE  
**PENNCROSS BENTGRASS  
ASSOCIATION**

1349 CAPITAL ST. N.E.  
SALEM, OR 97303



**PENNCROSS  
BENT GRASS**

WORLD-WIDE DISTRIBUTOR  
**TEE•2•GREEN CORP.**

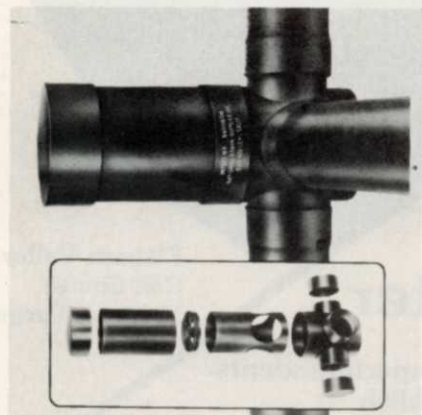
1212 WEST EIGHTH STREET  
KANSAS CITY, MISSOURI 64101  
(816) 842-7825

# Products



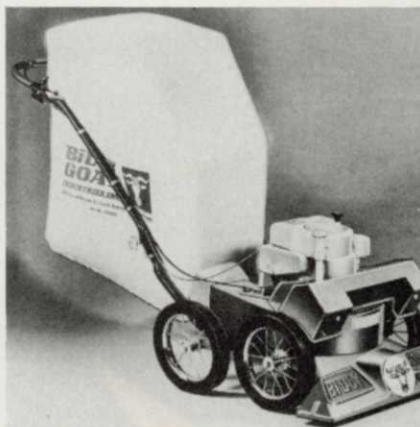
**Massey-Ferguson introduces** the new-from-the-grass up MF 1450 and MF 1650 tractors. Both are designed for a wide variety of lawn care jobs. A 650 lb. capacity, 3-point hitch and rear PTO are available as options. At 14 and 16 hp, they come with hydraulic implement lift and front belt-driven implement device.

Circle 701 on free information card



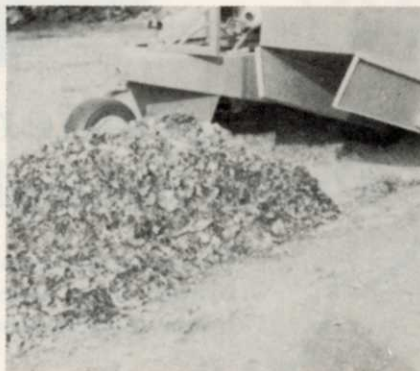
**National Drain Supplies** has a new Spee-D-Valve diverter valve molded in ABS plastic. Spee-D-Valve consists of a four-way distribution box, diverter valve stem, diverter valve shield, valve shield cap and outlet caps. Three interchangeable diverter valve stems permit positive flow control from the distributor box to any combination of one, two or all three outlets. For use in irrigation and drainage systems as well as septic tank leach field control.

Circle 702 on free information card



**Billy Goat introduces the KD-50SP** model suction sweeper with free wheeling in neutral and a "dead-man" clutch for added safety. Self-propelled chains provide power takeoff from engine to axle, adjustable height levels for various terrain, handlebar controls. The KD-50SP is powered by a 187 CC's Briggs and Stratton gas powered engine.

Circle 703 on free information card



**Hustler's new Catcher/Compactor** simplifies disposal of grass clippings and lawn debris without the use of auxiliary power or noisy blowers. It relies on tractor drive wheels for paddle conveyor power.

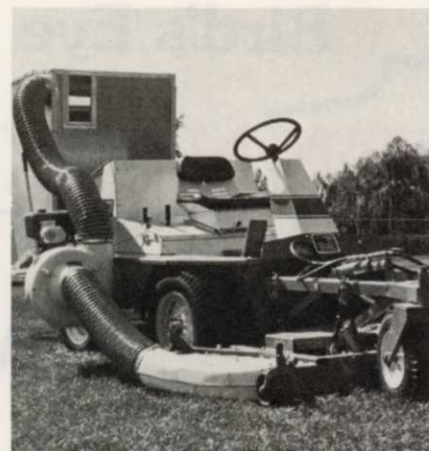
Circle 704 on free information card

**Vandermolen Corp. announces** a new 27 in. DRIFTMASTER with 5.5 gal. capacity to allow coverage of 5



to 6,000 sq. ft. Weed killer is applied to the ground by a ribbed roller.

Circle 705 on free information card



**A new turf vacuum** that uses an independent power source is now available from Jacobsen as an attachment to their Out Front Commercial riding rotary mower. The "Turf Vac" has a 1-cu. yard hopper that attaches to the back of the Out Front Commercial and a 7 hp Kohler engine that attaches to the machine's right side. Power is ample for picking up small debris as well as clippings and leaves. Noncorrosive materials are used wherever moisture might be a problem.

Circle 706 on free information card

# Healthy little beauty likes shade!

What a beauty little Glade Kentucky bluegrass has turned out to be! A fine, healthy specimen, Glade has a higher level of resistance to powdery mildew, and performs better than many other Kentucky bluegrasses in up to 60% shade as well as open sun. Glade, a Rutgers selection (nationally tested as P-29), has improved resistance to stripe smut and leaf rust. Midwestern and Northeastern university tests indicate that Glade has better than average resistance to Fusarium blight.

Glade is one of the fastest germinating bluegrasses, quickly forming a thick rhi-

zome and root system. A dense, low-growing, leafy turf, Glade has an attractive medium to dark green color.

Glade Kentucky bluegrass is your guarantee of physically pure and genetically true seed. You won't be seeding annual bluegrass (*Poa annua*), short-awned foxtail or bentgrass when you plant Glade. Specify this healthy little beauty in your next lawn seed mix. It blends beautifully with fine fescues and other elite bluegrasses, persists in shade when many others weaken. Glade Kentucky bluegrass is available at your local wholesale seed distributor. Insist on Glade in your mix.

Another fine,  
quality-controlled  
product of  
Jacklin Seed  
Company.

# Glade



KENTUCKY BLUEGRASS

U.S. Plant Patent 3151



# Classifieds

When answering ads where box number only is given, please address as follows: Box number, c/o Weeds Trees and Turf, Dorothy Lowe, Box 6951, Cleveland, Ohio 44101.

Rates: All classifications 50¢ per word. Box number, \$1. All classified ads must be received by Publisher the 5th of the month preceding publication date and be accompanied by cash or money order covering full payment. Mail ad copy to: Dorothy Lowe, Weeds, Trees & Turf, P.O. Box 6951, Cleveland, Ohio 44101.

## USED EQUIPMENT

**FOR SALE: 2 used aerial baskets** — 50 ft. working height, 2 Asplundh brush chippers. Bean sprayer, 35 G.P.M. Vermeer stump cutter 1560. Parkway Tree Service, Milwaukee, Wisconsin. Phone 414 257-1555.

**TWO REINCO HG. 10 HYDROSEEDERS.** Each with 1 1/2 inch Hannay hose reel. Set up for remote operation; easily converted for tower operation. Less than one year old. Excellent condition \$4975.00 each. Professional Turf Corp., Gaithersburg, Maryland. 301 948-5252.

**FOR SALE: 1966 Ford F700 Skyworker** with chipper box; 1971 Mitts and Merrill chipper 16" feed; F350 Ford with chip box and side tool boxes. John Mayer TreeCare. 707 459-2013.

**5 FT. BRILLION grass seeder** with 3 point hitch \$500.00. Ryan sod cutter with roll Ryder attachment, \$1000.00. Phone 815 427-6147.

**SEVERAL 50 FOOT SERVI-lifts** mounted on GMC trucks. Call 401 725-2250.

**VERMEER TS-66T on 1970 International 2010A tandem.** Rebuilt engine, overhauled brakes, suspension, and new tires. Digger rebuilt 1976 with new spades, rollers, bushings, cylinders, structurally reinforced, etc. Ready to work. Will send photographs. 1-517 655-1244. Spartan Landscaping, 1000 E. Grand River, Williamston, Michigan 48895.

## SEEDS

**SOD QUALITY Seeds** Merion, Fylking, Delta, Park, Newport, Nugget, Adelphi, Cheri, Glade and Baron bluegrasses also fine fescues. Manhattan rye grass. Custom mixing available. Michigan State Seed Co., Grand Ledge, Michigan 48837. Phone 517 627-2164.

## HELP WANTED

**YEAR ROUND WORK** A.A.A. Tree Service, Inc. of Florida. Looking for experienced top notch climbers with or without truck and

equipment to work by the hour, on percentage or under Franchise in Florida areas. Also needed older men with sales ability. Mechanic with chain saw experience. Man to operate his own tree spade. Henry Hardy, Jr., P.O. Box 6173, Orlando, Fla. 32803. Phone 305 339-5242.

## HELP WANTED

Persons with horticultural, entomology and agronomy backgrounds or related practical experience to fill positions as management trainees to learn the mechanics of our lawn spraying and general household pest control business. Our goal for you is promotion to middle or top management to fill our expansion needs. Several openings in different locations and salary ranges are available throughout Florida. We are a growth company (over \$2,000,000 annually) with aggressive but realistic expansion plans. Send resume (held in confidence) to:

**Ron Collins, Pres.  
R. W. COLLINS, INC.  
P.O. Box 2477, Satellite Beach, Fla. 32937**

**EDUCATIONAL OPPORTUNITIES in Park and Grounds** Operation Management Program with emphasis on horticulture, turf-grass, ground equipment, arboriculture, park facilities and landscaping. Write: William Rainey Harper College, Park and Grounds Operation Management Program, Algonquin and Roselle Roads, Palatine, Illinois 60067 or call 312 397-3000.

**LANDSCAPE MANAGER — experienced in landscaping** designing, slaes, sod production, construction management, work with homeowners, small commercial in Fort Wayne, Indiana area. Home furnished, good salary. Send resume: Exterior Designing, Spring Lake Farm, Hoagland, Indiana 46745.

## FOR SALE

**LANDSCAPING EQUIPMENT — 1967 Dodge 600** contractors dump, 8' x 12' truck chassis trailer, John Deere 10-10 crawler end loader/scarifier, Allis-Chalmers "G" tractor, Finn straw blower, 72' Hustler self propelled rotary mower, 8' Dearborn 3 point hitch disc, Viking roller blade/seeder, Howard 3 point hitch 5' roto tiller, 250 gallon Hudson sprayer/hose/gun on rubber. Phone 312 798-7072 7-4:30; after 4:30 754-0647

**TURF FARM BUSINESS — over 80 acres** first class sod production ready for spring sales Fort Wayne, Indiana area. Will sell sod production, lease farm, building to continue business. Phone 219 639-3012.

# Advertisers

Adelphi .....	14
Brand .....	38
Brouwer .....	32
Bunton .....	40
Canale's .....	45
Ciba Geigy .....	10 & 11
Creative Sales .....	18
Cushman Motors .....	49
Deere .....	5
Diamond Shamrock .....	52, 53
Ditch Witch .....	47
Eng. Products .....	40
Excel .....	39
FMC Corp. ....	19
Hahn .....	37
HMC .....	31
International Spike .....	9
Jacklin .....	55, 63
Jacobsen .....	65
Kay-Fries .....	43
F. D. Kees .....	60
Lakeshore .....	23, 46
Lofts .....	66
Magline .....	58
Manhattan Ryegrass .....	59
Monsanto .....	13
Occidental .....	41
Oregon Seed .....	54
PBI Gordon .....	24, 25
Princeton .....	27
Rainbird .....	51
Rhodia .....	16, 17
Ross Daniels .....	56
Rudy .....	33, 34
Ryan Turf .....	35
S.P.I.C. ....	2
Spraying .....	48
Strong's Mfg. ....	36
Swift Chemical .....	57
Tee-2 Green .....	61
Union Carbide .....	6, 7
Vermeer .....	44



TO PROTECT THE UNBORN AND THE NEWBORN

THIS SPACE CONTRIBUTED BY THE PUBLISHER

March of Dimes

**Coming  
Next  
Month**

Everything you wanted to know about fertilizers but didn't know who to ask.



## Which is cheaper, five men and rakes or one man and a Jacobsen sweeper?

It's surprising how often you can analyze a turf care chore and discover how to get the same job done faster and cheaper with the right kind of turf care equipment.

Jacobsen Distributors can help you figure out, in black and white, just how much it's costing you in man-hours to sweep, or mow, or even seed an area.

Then compare the same operation with getting it done by one man and new Jacobsen equipment. You can see for yourself how time and money can be saved.

That's just part of what a Jacobsen distributor considers as giving good service.

We not only want you to buy the best equipment for the job, we want to make sure that you're convinced it's the smartest thing you can do.

Beyond that, we can probably help you arrange a financing or leasing program to help you get the equipment that will start saving you money right away.

Why not ask your Jacobsen distributor to do a cost analysis on your turf care chores? It won't cost you anything to get an answer.

But it could be costing you something if you don't.

**Your Jacobsen Distributors**

Great products deserve great service.

For the name of the distributor near you write: Jacobsen Turf Distributor Directory, 1721 Packard Avenue, Racine, Wisconsin 53403