

Classifieds

When answering ads where box number only is given, please address as follows: Box number, c/o Weeds Trees and Turf, Dorothy Lowe, Box 6951, Cleveland, Ohio 44101.

Rates: All classifications 50c per word. Box number, \$1. All classified ads must be received by Publisher the 10th of the month preceding publication date and be accompanied by cash or money order covering full payment. Mail ad copy to: Dorothy Lowe, Weeds, Trees & Turf, P.O. Box 6951, Cleveland, Ohio 44101.

USED EQUIPMENT

FOR SALE: 2 used aerial baskets — 50 ft. working height, 2 Asplundh brush chippers. Bean sprayer, 35 G.P.M. Vermeer stump cutter 1560. Parkway Tree Service, Milwaukee, Wisconsin. Phone 414 257-1555.

FOR SALE 1972 Waynes brush chipper, 16 inch, less than 1000 hours, perfect shape. Klausing Tree Service, New Lenox, Illinois 60451. Phone 815 485-8488.

1975 MODEL 500 HYDRO axe, brand, new, less than 150 hours, has all extra features including air condition, \$40,000.00. Call 914 895-3495.

FOR SALE — Vermeer tree mower, model TM-700. Open to offers. Call Oak Hill Country Club, Joe Baidy, 716 586-2584.

1972 SERVI-LIFT model S-35 with elevator, 52' working heights, mounted on 1972 GMC truck with 7800 miles. Phone 203 666-0661.

VERMEER TS44T tree spade mounted, 1973 Chevrolet C-30. Tree Movers, Inc., 1313 North Scott St., Wilmington, Delaware 19806. Phone 302 656-1656.

BEAN ROTARY mist blower Model 100 trailer mounted for tall tree spraying. Can easily be truck mounted, \$1750.00. 216 381-7553.

ASPLUNDH BRUSH CHIPPER 1974, Vermeer model 10 stump cutter, new engine. Cleveland, Ohio 216 253-6670.

SEEDS

SOD QUALITY Seeds Merion, Fylking, Delta, Park, Newport, Nugget, Adelphi, Cheri, Glade and Baron bluegrasses also fine fescues. Manhattan rye grass. Custom mixing available. Michigan State Seed Co., Grand Ledge, Michigan 48837. Phone 517 627-2164.

LAWN SEEDS Wholesale. Full line of quality grasses. Fescues, Ryegrasses and Bluegrass varieties including Fylking, Nugget and Glade. Write today or call collect for price quotations. (216) 753-2259. Olinger Seed Company, 2705 Wingate, Akron, Ohio 44314.

HELP WANTED

GENERAL MANAGER, SOD FARM. All you have to be is imaginative, yet practical; energetic, yet thorough; growth- and production-oriented, yet able to work well with others; technically knowledgeable, yet able to step in and sell; profit-tuned, yet always conscious of the quality of our product. In other words, a shirt-sleeve manager who knows how to work, and how to get others to work; who believes in profits and results. You should have at least ten years of experience in growing and production on a sod farm, and you should be interested in running a farm that produces

around 800,000 yards a year located in the Northeastern U.S. We offer a very special salary structure — ranging from \$18,000 to \$28,000, depending on ability and results — for a very special person. Our people know of this ad. Send your resume in strictest confidence, to Box 151, Weeds, Trees & Turf, Box 6951, Cleveland, Ohio 44101.

YEAR ROUND WORK — A.A.A. Tree Service, Inc., of Florida. Looking for experienced top notch climbers to work by the hour, on percentage, or under franchise in areas of Florida. Also needed-older men with sales ability. Henry Hardy, Jr. P.O. Box 6173, Orlando, Fla. 32803. Phone 305 339-5242.

SUPERINTENDENT. \$1,371/month. Directly responsible for the pavements, grounds and refuse collection functions which entails budget planning and administration, organizing and managing the pavements and Grounds Division. Requires college degree in horticulture, general engineering or related field, 4 years related experience, and supervision of grounds and equipment staff. Send resume by June 30, 1976, to: Personnel Office, University of California, Santa Barbara, Calif. 93106. An Affirmative Action and Equal Opportunity Employer.

TURF FARM MANAGER. You can earn between \$16,000 and \$22,000 a year, if you're alert to sound growing techniques, production-oriented and able to manage people effectively. Expansion of our bark business and related operations opens room for a turf manager with at least five years of practical experience on a turf farm. Inquiries will be kept strictly confidential. Please send your complete resume (including educational experience and references) to Donald Weyant, V.P., Gold Star Sod Farms, Inc., Canterbury, New Hampshire 03224.

TURF FARM MANAGER, 5 years experience, must be willing to work and manage 50 to 75 men. Send resume to Richlawn Turf Farm, 15290 Arapahoe Road, Denver, Colorado 80232.

FOR SALE

CHIPMORE BRUSH CHIPPERS, Stanley Hydraulic tools, Cascade Knuckleboom cranes. Finest equipment sales and service. Ed Racich, J. J. Turner, Inc., 19451 Roseland Avenue, Cleveland, Ohio 44117. 216 481-9308.

SCHOOLS & COLLEGES

EDUCATIONAL Opportunities in Turfgrass. Two year program in Horticulture with emphasis in turfgrass management. Write to Iowa Lakes Community College, Emmetsburg, Iowa 50536.

Advertisers

Applied Bio-Chemicals	22
Austin Products, Inc.	52
Brouwer Turf	
Equipment, Ltd.	43
Ciba-Geigy	10-11
Crown Chemicals	47
Cushman Motors	45
Deere & Company	17
Diamond Shamrock	
Corporation	5, 15
Ditch Witch Trenchers	18
Dow Chemical Co.	2nd Cover
Echo Chain Saws	46
Goodall Company	32
Gravelly	42
Great Lakes Biochemical	24
Hercules, Inc.	23, 32, 33, 36, 40, 48, 50
Jacklin Seed Company	49
Jacobsen Mfg. Co.	3rd Cover
Johns-Manville	8
Kay Fries Chemical, Inc.	39
Kembro Corp.	22
Laval Separator Corp.	48
Lofts Pedigreed	
Seed Co.	4th Cover
Big John Tree	
Transplanter, Inc.	50
Mitts & Merrill, Inc.	29
Mott Corp.	34
Nursery Specialty	
Products	40
Pennwalt Corp.	26
Princeton Mfg. Co.	19, 37
Ramsey Seed Co.	25
Rohm & Haas	31
Ryan Turf Equipment	35
Sea Ranch, Inc.	24
Solo Kleinmotoren	23
Spraying Systems	42
Sto-Cote Products, Inc.	43
Strong Mfg. Co.	37
Target Chemical Co.	26
Toro Technology	32
TUCO, Div. Upjohn Co.	41
USS Agri-Chemicals	7
Velsicol Chemical Co.	20-21

Next Month

The July issue of WEEDS TREES & TURF will feature a symposium on *Fusarium* blight headed up by Dr. Al Turgeon of the University of Illinois, a special emphasis on tree and ornamental care and coverage of the recent testimonial dinner for "Mr. Sod" in Maryland, Parker Shirling.

The American farmer.
He's a carpenter, a botanist,
a welder and an accountant.
He's a truck driver and a
weatherman, a ditch digger
and a soil expert. He's a
mechanic. And he's an
inventor.

Above all, he's nobody's fool.
Take farm machinery.
When it comes to laying down
his hard-earned cash for
equipment, he's a tough man
to please. Because he knows
that cheap, poor quality tools
can cost him plenty in the
long run.

This is the man we build
machines for. Tough
machines.

Our full line of Servis rotary
cutters and shredders, box

scrapers, landscape rakes
and rear-mounted blades are
the best money can buy.

We also make a complete
line of quality Athens disc
harrows, disc plows and
chisel plows.

Each unit in our Servis and
Athens lines is engineered to
do the job it was designed to
do with minimum strain on
your tractor.

But more important, each
implement is built to last.
Using the highest quality
materials available, each unit
is constructed under stringent
quality controls. And our
engineers subject each new
model to more rigorous
treatment than you ever
would under normal
working conditions.

After all, we have built our
reputation on quality
products. And we want you to
rest assured that when you
buy Servis and Athens
implements, you're getting
the best.

But don't
take our word
for it. Talk to someone who
owns a piece of our equipment.
Then see your
Athens and
Servis dealer.
Or write:

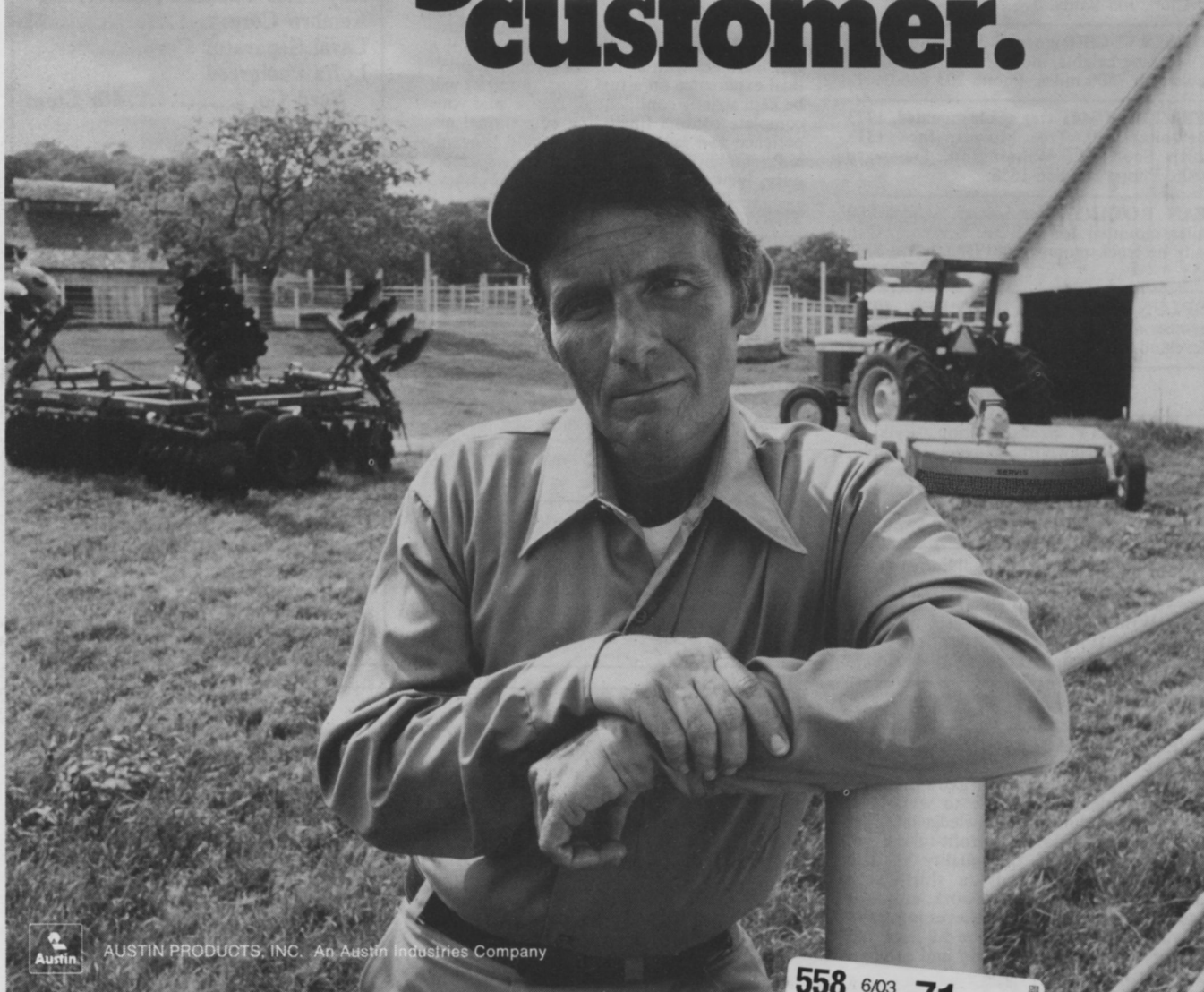
SERVIS

ATHENS
TILLAGE TOOLS
FIELD TESTED

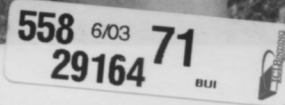
Austin Products, Inc.
Dept. 1-75-C
P.O. Box 1590
Dallas, Texas 75221

We build equipment the way
we do because you wouldn't
settle for less.

Tough customer.



AUSTIN PRODUCTS, INC. An Austin Industries Company



Here's the new riding mower that thinks it's a walking mower.

Like all of us Jacobsen Distributors, you'll find Earl Cain (of Lawn & Garden Supply Co., Phoenix, Arizona) eager to tell you about Jacobsen's new 70" Triplex mower.

We're all pretty excited about this brand new mower that mows and trims areas like they were done by hand.

Because of its maneuverability

and design, you can move it in close to shrubs and trees for those touchy trimming jobs. Just like a walking model.

The mowers are fully articulated to follow the contours of uneven ground. And the constant-speed reels give any turf a finish a barber could be proud of.

There's a technically advanced hydrostatic drive, with

both forward and reverse, that produces over 7 MPH in transport speed, and up to 4 MPH in mowing speed.

Ask your nearby Jacobsen Distributor about the new 70" Triplex mower. When it comes to mowing and trimming turf areas, it sure beats walking.

Your Jacobsen Distributors.

Great products deserve great service.



For the name of the distributor near you write: Jacobsen Turf Distributor Directory, 1721 Packard Avenue, Racine, Wisconsin 53403

Circle 115 on free information card