

(Moth, Gypsy) Federal Agencies Launch Joint Attack on Forest Pests (ns)	Feb. 55
(Moth, Gypsy) One Mistaken Notion (fa)	Mar. 10
Moths, Tussock and Gypsy, Aerial War on Two Fronts: (fa)	Mar. 16
Motivating the Turned-Off Employee (Part II) by John L. McKeever (fa)	Jan. 44
Motivating the Turned Off Employee (Part III) by John L. McKeever (fa)	Mar. 20
Mower Debate, The Great, by James C. Walker (fa)	May 16
Mower Safety, Toro Chief Optimistic Toward Recommendations (nf)	June 30
(Mowers) Repair or Replace? An Economical Guide to Mower Life Expectancy by J. R. Watson (fa)	Aug. 12
Musser Invitational Benefits Research (ns)	Oct. 31
Musser Tournament, First West Coast (ns)	Nov. 22

N

NPCA to Sponsor Clinic on Outdoor Pest Services (ns)	Jan. 25
Nalco Company, Drift Control Agent, Antifoam Introduced by (ns)	Apr. 30
(National Arborist Association) Association Profile (fa)	July 16
National Club Association to Convene in Washington (ns)	Jan. 25
(Nematocide) Scotts ProTurf Introduces New (ns)	Apr. 31
Nematode Problems, Turfgrass: Diagnosis and Control by Dr. G. W. Bird (fa)	Mar. 34
(New Jersey Turfgrass Association) Turfgrass Shows Changing, So Are Attendance Figures (cr)	Mar. 44
New York Arborists Group Elects '75 Officers, Directors (ns)	Mar. 51
Nitrate Contamination, Researchers Seek Halt To (nf)	June 44
Noise Exposure, OSHA Extends Period on Rules Limiting (gn)	Mar. 12
Noise Exposures, U. S. Department of Labor to Hold Public Hearing on Proposed Standard (gn)	June 14
Noise Standards, No Changes Says OSHA Boss (gn)	Apr. 13
Noise Testing Lab, EPA Sets Use Agreement for (ns)	July 27
(Nurrelle) Search for a "Super Fungicide" (fa)	Sept. 38
Nurserymen Urge Congress to Temper Fertilizer Policies (ns)	Jan. 24
Nutsedge, Aquatic Herbicide Research Results (ns)	Feb. 48
Nutsedge, Yellow, Cultural Practices and, by A. J. Turgeon (fa)	Feb. 48

O

OSHA Announces Availability of Three New Booklets On OSHA Programs and Policy (gn)	Aug. 15
OSHA Boss Announces Completion of Field Office (gn)	Mar. 12
OSHA Develops Self-Teaching Course (gn)	May 14
OSHA Extends Period on Rules Limiting Noise Exposure (gn)	Mar. 12
OSHA Issues Final Rules on Withdrawal Proceedings (gn)	Aug. 15
OSHA Seeks Public Comment on Document for Occupationally Hazardous Materials (gn)	Apr. 13
OSHA, Small Business to Gain Penalty-Free Advice (ns)	Feb. 28
OSHA Training Institute Gets Improvement Award (ns)	July 26
OSHA, Two New Programs Initiated by (gn)	July 12
Occidental and Calamco to Combine Headquarters (ns)	Jan. 36
Occidental Chemical Signs Contract Agrinova Corp. (gn)	Apr. 13
Occupational Safety and Health Act, 5th Anniversary (ed)	June 8
Ohio Shade Tree Day Set for July 9 (cr)	June 33
Ohio Turfgrass Conference Report (cr)	Feb. 60
Ohio Turfgrass Field Day Features Research Data (fr)	Nov. 25
Ohio Turfgrass Show Slated for Dec. (cr)	Nov. 23
Outboard Marine Announces End of Golf Car Production (gn)	Aug. 15
Outboard Marine Corporation Reports Net Earnings (gn)	Dec. 12

P

Pacific Supply Cooperative Fined for Violation of Federal Seed Act (gn)	Feb. 8
Penn State Chemist's Findings Contradict Current Theories (ns)	Jan. 64

Pesticide Accidents, Child, Target of EPA Programs (ns)	May 31
"Pesticide Applicators, Standards for Certification of" New Brochure Released by EPA (gn)	Mar. 12
Pesticide Certification, EPA Needs To Clear Up Areas Relating to (ed)	May 8
Pesticide Clearance, USDA Appropriates Funds, Speeds (ns)	Aug. 22
Pesticide Laboratory Services, A Free Pamphlet on, Available from EPA (gn)	July 12
Pesticide Leaders, 1975 State (ns)	May 43
Pesticide Registration, EPA Recently Notifies Producers (gn)	Sept. 8
Pesticide Registration, New EPA Statistics on (gn)	Apr. 13
(Pesticides) Aerial War on Two Fronts: Tussock and Gypsy Moths (fa)	Mar. 16
Pesticides, Federal Registration of (gn)	Aug. 15
Pesticides Issue, Train Asks for Support on (ns)	Nov. 22
Pesticides, New Mosquito Control, EPA Grants Limited Use Registration to (ns)	May 30
Pioneer Chain Saws Will Move to New Facility (gn)	May 14
Plant Propagator Society Honors 3 Horticulturists (ns)	Jan. 68
Prairie Grasses, The Vista-Makers by Arnold H. Webster (fa)	Feb. 18
Production Costs and Seed Prices for '75 by Nate Repair (fa)	Jan. 41
Professional Grounds Management Society Elects Officers, Directors (ns)	Oct. 38
ProTurf's Jim Converse Honored by Univ. of Maine (ns)	May 35

R

Railroad Weed Control, The ABC's of, by Don N. Johnston (fa)	Feb. 12
Railroad Weeds: One Headache You Can Do Without (fa)	May 10
(Rights-of-Way Maintenance) High Flying Contract Application (fa)	Nov. 38
(Robinson's Lawn & Golf) Missouri Distributor Moves Into 44,000 Sq. Ft. Building (ns)	Mar. 60
Rohm and Haas Company Plans Construction of Pilot Plant (gn)	Oct. 10
Root Growth, Finer Color By Drill Hole Fertilizing (ns)	Jan. 47
Royer Acquires New Line of Land-Clearing Machines (ns)	Dec. 30
Ryan Equipment Co., Herbert Jespersen named President (gn)	Mar. 12

S

SIA Manual, Wastewater, Land Treatment, Subject of (ns)	Feb. 24
Safe-T-Laen, Inc., Moody Sprinkler Co., Inc. Sign Manufacturing and Marketing Agreement (gn)	Dec. 12
(Safety) Proper Handling for Chain Saw Safety by Blake Stretton (fa)	Apr. 45
(Safety) The Great Mower Debate by James C. Walker (fa)	May 16
(Safety) "There Ain't No Free Lunch" by John Kinkead (ge)	Aug. 35
(Saws, Chain) A Maintenance Schedule for Cost Cutting by Dave Kirby (fa)	Apr. 47
(Saws) Chain Saw Safety, Proper Handling for, by Blake Stretton (fa)	Apr. 45
(Saws, Chain) 10 Steps to Improved Cutting by Frank McDonald (fa)	Apr. 53
(Saws, Chain) The Growing Commercial Market (fa)	Apr. 61
Saws, Little, for Big Jobs, The Lightweights: by Jerry Kartheiser (fa)	Apr. 49
(Scott, O. M.) Pro Turf Introduces Blends For Winter Overseeding Use (ns)	Mar. 64
(Scotts Proturf) Nematocide, Fungicide Introduced (ns)	Apr. 31
Seed Label, The by James Converse (fa)	June 16
Seed Prices for '75, Production Costs and by Nate Repair (fa)	Jan. 41
(Seed) Pro Turf Introduces Blends for Winter Overseeding Use (ns)	Mar. 64
Seeds of Woody Plants, USDA Publishes New Book on (br)	May 32

Sewage Sludge Composting From Waste to Resource (fa)...	Feb. 42
Sewage Sod System Saves Time by Dr. Henry F. Decker *fa).....	June 40
(Shigo, Dr. Alex) Forest Service Man Cited for Tree Decay Research (ns).....	Feb. 40
Sloane Ends 2-Year Strike Votes Out Rubber Union (ns)...	Aug. 48
Smith Turf Changes Name (ns).....	Jan. 36
(Sod) American Sod Producers Visit Midwest Farms (cr)...	Sept. 26
Sod-Farming Family, Efficient Cultural Practices Vital to (fa).....	Aug. 28
Sod Growers, Inventory of, New ASPA Market Survey (ns).....	Aug. 39
Sod Growers, Slumping Economy, Rising Costs, Put Pinch on Nation's (fa).....	Dec. 24
(Sod) Instant Lawns for Home and Industry, Huber Ranch Sod Nursery by Tom Stundza (fa).....	Nov. 26
Sod Problems, Homeowner—Fusarium Blight by Charles L. Cooper (fa).....	Apr. 27
Sod Producers Association Honors Beard at Meeting (cr).....	Apr. 31
Sod Production, 'Ferris Wheel' Could Revolutionize the Industry (nf).....	May 28
(Sod) Sewage Sod System Saves Time by Dr. Henry F. Decker (fa).....	June 40
Soil Warming Techniques Uses Heat from Power Plant (ns).....	Aug. 33
(Southern California Turfgrass Council) Mount Sinai's Al Dennis Heads Turfgrass Council (ns).....	Oct. 38
Southern Turfgrass Association Officers for 1976 (cr).....	Apr. 16
Southern Turfgrass Association Report (cr).....	Apr. 16
Southern Weed Science Society Elects New Officers (cr).....	Mar. 52
Spimock, Ray A., New President, Aquatic Plant Management Society, Inc. (ns).....	Sept. 29
Sprayer Idea, A New, Proportional Mixing: (nf).....	May 66
Sprayer, To Design a Better, by Raymond G. Hill (fa).....	Feb. 44
Sprinkler Irrigation Association 1975 Executive Committee (fa).....	Jan. 22
Sprinkler Irrigation Association, Quarter Century For (fa).....	Jan. 18
Spruce Budworm, Carbide's Sevin 4 Oil Insecticide Registered for (ns).....	July 26
Standard Golf Company Celebrates Their Golden Anniversary (gn).....	Mar. 12
Standard Marks 50 Years in Golf Accessory Industry (ns).....	Feb. 58
Standard Oil Subsidiary Files Appeal for More Gas (ns).....	Aug. 22
Stender Urges Managers to Start Safety Programs (ns).....	Feb. 58
St. Louis' Tree Program Receives Governor's Award (ns).....	Dec. 30
Subirrigation, Turf—Technique of Tomorrow, by Jeffrey V. Krans (fa).....	May 22
Superintendent Without Grass, by Stan Metsker (nf).....	July 36
Superintendents Open Show (ns).....	Jan. 48

T

Terra Tack, Vaughan Seed Company Becomes Dealer For (gn).....	Sept. 8
(Thompson-Hayward Chemical) Experimental Compound Gets Temporary Nod From EPA (ns).....	Sept. 24
Toro Builds Casting Plant (ns).....	Jan. 66
Toro Chief Optimistic Toward Mower Safety Recommendations (nf).....	June 30
Toro Company Acquires Assets of Ohio Toro Co. of Cleveland (gn).....	Dec. 12
(Toro) Industry Seminar Includes Parts and Inventory Control (ns).....	June 32
Toro, Scott Combine Efforts in Youth Training Program (ns).....	May 31
Toro Turf Products Extends Parts Warranty to One Year (ns).....	June 33
Toro's Irrigation Division Offers '75 Product Catalog (ns).....	May 36

Toro's Mobile Turf Service Expands by Five New Units (ns).....	Apr. 37
Toro's Windom Employees Ratify 3-Year Contract (ns).....	Nov. 27
Train Asks for Support on Pesticide Issue (ns).....	Nov. 22
Train Stops Manufacture of Chlordane, Heptachlor (nf).....	Sept. 22
(Transplanting) Do Anti-Transpirants Improve Transplant Success? (fa).....	Oct. 39
Tree Borer Control Perfected (ns).....	Oct. 31
Tree Program, St. Louis', Receives Governor's Award (ns).....	Dec. 30
Tree Spade vs. Bare Root Planting by Robert A. Cool (fa).....	Nov. 14
Tree Seeds, New Superior, Exchanged in Outer Space (ns).....	Aug. 24
(Trees) A Talk with the Expert by Walter E. Money (fa).....	May 23
(Trees) Anatomy of a Wound by Alex L. Shigo and Edwin vH Larson (fa).....	July 20
(Trees) Europeans Examine U.S. Implant System by Warren Wolfe (fa).....	Aug. 14
(Trees) Lethal Yellowing Research Boosted by New State Funds (ns).....	Aug. 22
(Trees) Missouri Foresters Studying Causes of Wood Separation (ns).....	Mar. 64
(Trees) Protection from the Unpredictable by L. L. Baumgartner (fa).....	Jan. 12
(Trees) Root Growth, Finer Color by Drill Hole Fertilizing (ns).....	Jan. 47
(Trees) Shade Tree Federation Supports Arbor Day (ns).....	Jan. 24
Trees, Shrubs, Damaged, May be Tax Deduction (ns).....	Dec. 26
(Trees) Symposium Features Shade Tree Evaluation (cr).....	Aug. 49
(Trees) Thornless Hawthorn Pioneered in Ohio (fa).....	Jan. 66
(Trees) What Role Do Trees Play in Cleansing the Air? by Bruce R. Roberts and Alden M. Townsend (fa).....	July 38
Turf, Artificial, vs. Natural Grass, Which Costs More to Maintain? by Melvin J. Robey (fa).....	Oct. 11
Turf Disease Control, Systemic Fungicides, Their Role in by Dr. R. W. Smiley (fa).....	Jan. 30
(Turf Disease) Dollar Spot Control, Integrating Systemics and Contacts by P. O. Larsen (fa).....	Mar. 46
(Turf Disease) Fusarium Blight Control Practical Ideas for Bluegrass Health (fa).....	June 10
Turf Disease Shutout (fa).....	Apr. 14
Turf Fertilization, Proper, Increases Wear Tolerance (nf).....	Dec. 28
Turf Fertilizer Supplies O.K., But Prices Higher Than '74 (ns).....	Mar. 54
(Turf) Natural Grass vs. Artificial Turf, Which Costs More to Maintain? by Melvin J. Robey (fa).....	Oct. 11
Turfgrass Conference, New Orleans, GCSAA Show Attendance: 4,899 (cr).....	Mar. 24
Turfgrass Council Elects Officers (cr).....	May 28
Turfgrass Industry, Virginia's, You've Come A Long Way Baby (fa).....	Oct. 36
Turfgrass Nematode Problems: Diagnosis and Control by Dr. G. W. Bird (fa).....	Mar. 34
Turfgrass Pests, Guide to, New Publication from NPCA (ns).....	July 28
Turfgrass Research Programs, California Fertilizer Association Supports (ns).....	Jan. 25
Turfgrass Shows Changing, So Are Attendance Figures (cr).....	Mar. 44
(Turf) Varieties of Bermuda Grass Tested for NPK Response (nf).....	Dec. 24
Tussock Moth, and Gypsy, Aerial War on Two Fronts (fa).....	Mar. 16
2,4,5-T, Dow Chemical Research Data On, Reviewed by EPA (gn).....	Oct. 10

U

USDA Issues New Publication For Moving Living Organisms (ns).....	Aug. 38
USDA Plant Permit Office Relocated to Hyattsville (ns).....	Nov. 27

V

Vaughan Seed Company Becomes Dealer for Terra Tack (gn)	Sept. 8
(Vehicles) Give Him Wheels, But (fa)	Feb. 22
Velsicol Asks for Temporary Restraining Order (nf)	Sept. 22
Velsicol Requests Hearing on EPA's Proposed Action (ns)	Feb. 36
Vermeer Representatives Honored at National Silver Shovel Awards (ns)	Oct. 34
Vets Home Superintendent Cited for Beautification (ns)	Jan. 56
Virginia's Turfgrass Industry, "You've Come A Long Way Baby" (fa)	Oct. 36

W

Walbro Corp. Announces Acquisition of Auburn Die Casting Corp. (gn)	Feb. 8
Water Quality Management (ed)	Apr. 8
Weed Control, Railroad, The ABC's of, by Don N. Johnston (fa)	Feb. 12
Weed Eaters, Inc. Moves Distribution Center (gn)	Nov. 12
Weed Science Society of America 15th Annual Convention (cr)	Mar. 36
Weed Science Society of America 1975 Officers (cr)	Mar. 36
Weed Society Meeting Slated for Memphis, Tenn. (ns)	Jan. 25
Weeds, Railroad: One Headache You Can Do Without (fa)	May 10
(Wilt-Pruf NCF) Protection From the Unpredictable by L. L. Baumgartner (fa)	Jan. 12
Wind King Mfg. Company Underwent Transfer of Ownership (gn)	Dec. 12
Wood Separation, Missouri Foresters Studying Causes of (ns)	Mar. 64
Wood Wastes, Profitable Outlets For by Dr. Roger Funk (fa)	July 32

AUTHORS

Baumgartner, L. L., "Protection from the Unpredictable"	Jan. 12
Bird, Dr. G. W., "Turfgrass Nematode Problems: Diagnosis and Control:"	Mar. 34
Burkhalter, Alva P., "The White Amur Controversy"	June 26
Campbell, Dr. R. Lee, "Adelgids: The Aphid Controversy"	Mar. 32
Chappel, W. E., "Aerial Application, Techniques, Systems, and Precautions" with J. S. Courtney and J. A. Weidhass	Nov. 20
Cloud, Bob, "Protecting Your Investment In an Irrigation Installation"	May 38
Cortney, J. S., "Aerial Application, Techniques, Systems, and Precautions" with W. E. Chappell and J. A. Weidhass	Nov. 20
Converse, James, "The Seed Label"	June 16
Cool, Robert A., "Tree Spade vs. Bare Root Planting"	Nov. 14
Cooper, Charles L., "Homeowner Sod Problems—Fusarium Blight"	Apr. 27
Daniel, Dr. W. H., "Slow Release IBDU—Promising New Tests"	Jan. 14
Decker, Dr. Henry F., "Sewage Sod System Saves Time"	June 40
Felix, Robert, "How Do We Meet the Challenge"	May 13
Fischer, James A., "Energy Saving Suggestions For Turfgrass Managers"	Jan. 65
"Four Ways to Fight Inflation"	Feb. 56
Funk, Roger, Dr., "Profitable Outlets For Wood Wastes"	July 32
Gleekman, Dr. L. W., "Corrosion on a PVC Irrigation System"	May 24

Grigg, Gary T., "One Million-Dollar Challenge"	Jan. 10
Hill, Raymond G., "To Design a Better Sprayer"	Feb. 44
Hiltbran, Robert C., "Aquatic Herbicides In Irrigation Water"	Feb. 48
Johnston, Don N., "The ABC's of Railroad Weed Control"	Feb. 12
Kartheiser, Jerry, "The Lightweights; Little Saws for Big Jobs"	Apr. 49
Kinkead, John, "There Ain't No Free Lunch"	Aug. 35
Kirby, Dave, "A Maintenance Schedule for Cost Cutting"	Apr. 47
Krans, Jeffrey V., "Turf Subirrigation—Technique of Tomorrow?"	May 22
Lamb, W. Scott, "Big Canyon Golf Course, An Engineering Marvel"	May 60
Larson, Edwin vH, "Anatomy of A Wound" with Alex L. Shigo	July 20
Larsen, P. O., "Dollar Spot Control, Integrating Systems and Contacts"	Mar. 46
Love, J. L., "Hydraulic Maintenance Is Back"	Aug. 16
McDonald, Frank, "10 Steps to Improved Curring"	Apr. 53
McKeever, Dr. John L., "Motivating the Turned-Off Employee Part II"	Jan. 44
"Motivating the Turned-Off Employee Part III"	Mar. 20
Metsker, Stan, "Superintendent Without Grass"	July 36
Miller, Peter, "Keeping Firestone in Championship Condition"	Aug. 26
Money, Walter E., "A Talk with the Expert"	May 23
Mott, Elmer, "Good 'N Cheap!"	Sept. 28
Osburn, George E., "Re: Fertilizer, The Rational Approach"	Apr. 19
Repair, Nate, "Production Costs and Seed Prices for '75"	Jan. 41
Roberts, Bruce R., "What Role Do Trees Play in Cleansing the Air?" with Alden M. Townsend	July 38
Robey, Melvin J., "Natural Grass vs. Artificial Turf Which Costs More to Maintain?"	Oct. 11
Rushing, William N., "Aquatic Plant Management, A Long Range Look At"	June 22
Schmidler, Curt, "Even Tough Ones Do Better With Care"	July 18
Schoeppner, Karl P., Jr., "Buy A Chipper That Fits Your Needs"	July 14
Shigo, Alex L., "Anatomy of a Wound" with Edwin vH Larson	July 20
Smiley, Dr. R. W., "Systemic Fungicides—Their Role in Turf Disease Control"	Jan. 30
Stretton, Blake, "Proper Handling for Chain Saw Safety"	Apr. 45
Stundza, Tom, "Huber Ranch Sod Nursery 'Instant Lawns for Home and Industry'"	Nov. 26
Tewari, Dr. Guy, "Minerals and Management, Measuring the Nutritive Values of Gypsum"	June 18
Townsend, Alden M., "What Role Do Trees Play In Cleansing the Air?" with Bruce R. Roberts	July 38
Turgeon, A. J., "Cultural Practices and Yellow Nutsedge"	Feb. 48
Waldrum, "Tex", "Microfoil Background"	Nov. 40
Walker, James C., "The Great Mower Debate"	May 16
Watson, J. R., "Repair or Replace?"	Aug. 12
Weber, Stanley, L., "Lawn Care Business is Changing . . . Are You?"	Oct. 14
Webster, Arnold H., "Prairie Grasses, The Vista-Makers"	Feb. 18
Weidhass, J. A., "Aerial Application, Techniques, Systems, and Precautions" with W. E. Chappell and J. A. Courtney	Nov. 20
Wolfe, Warren, "Europeans Examine U.S. Implant System"	Aug. 14

KEY: Feature article, (fa); news story, (ns); Conference report, (cr); book report, (br); obituary, (o); editorial, (ed); guest editorial, (ge); government news, (gn).

New Products

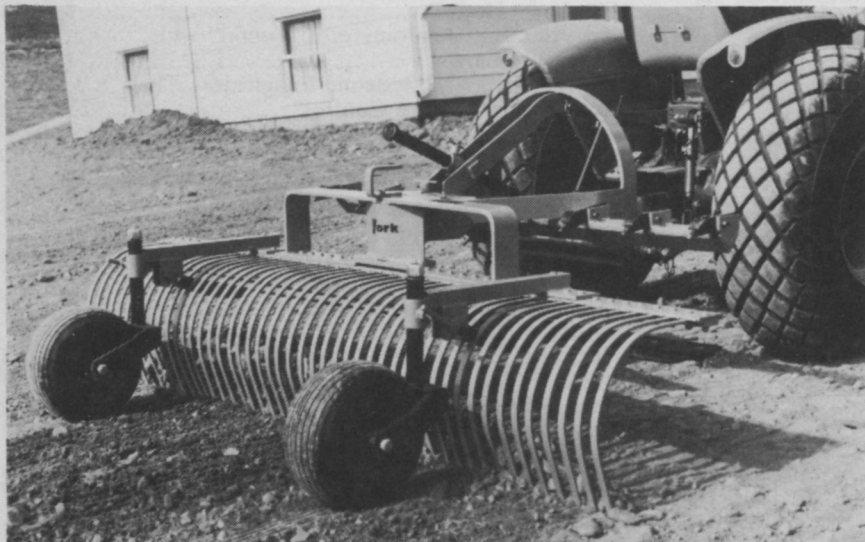
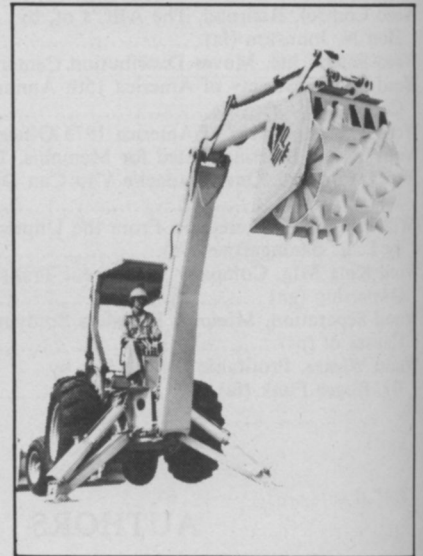


NEW FEATURES: Automotive steering and shock absorbers are new standard features on 1976 model Cushman Runabout vehicles. Other standard features on the three-wheel utility cart include turf tires, front shocks and a utility pickup box measuring 46 in. x 34 $\frac{3}{4}$ in. x 14 in. Equipment options include front bumper, speedometer, overload springs, steel cab with cloth or steel doors and an exhaust spark arrestor set.

Circle 701 on free information card.

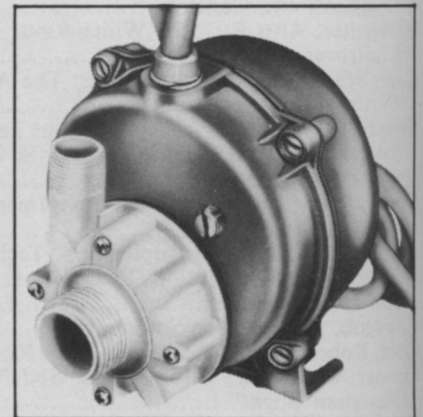
COMPACTOR: This unit mounts on a backhoe boom and rolls along the full width of a trench during backfilling. It uses the hydraulics of the boom for back and forth movement and uses the weight of the backhoe for compacting the soil like the sheeps-foot roller it resembles. The unit is manufactured by Earth Pack Industries.

Circle 703 on free information card.



RAKE: York Rakes introduces this new unit designed and built specifically for use with the new 20 to 30 HP tractors. Up until now, according to the manufacturer, landscapers using this new breed of tractor had to resort to rakes built for other horsepower ranges. This unit features welded steel construction and a seven foot working width. The rake can be drawn straight across for leveling and spreading soil, or can be angled to the right or left to discharge excess soil, rocks and debris.

Circle 702 on free information card.

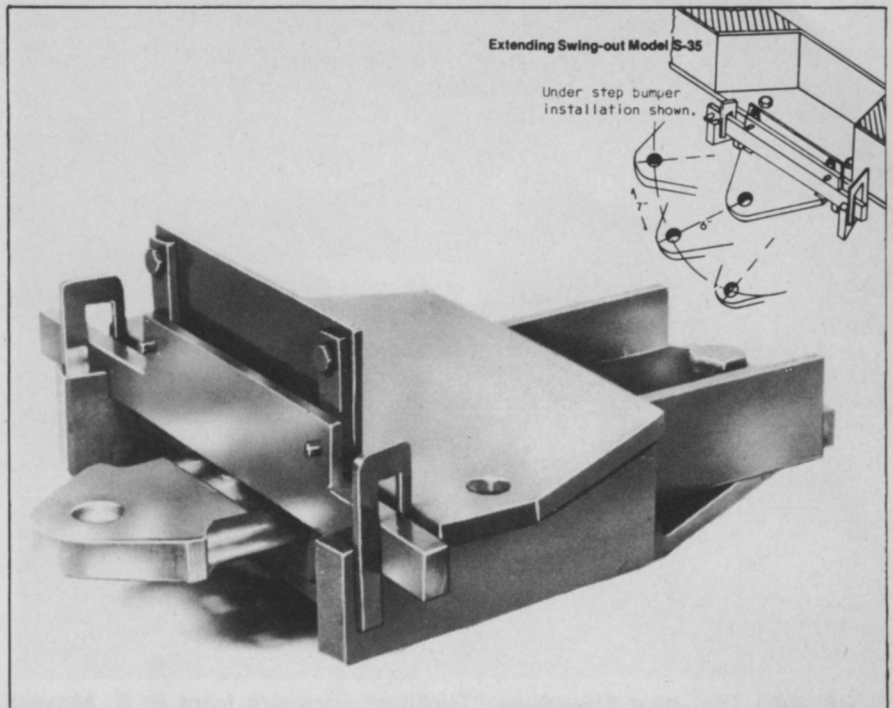
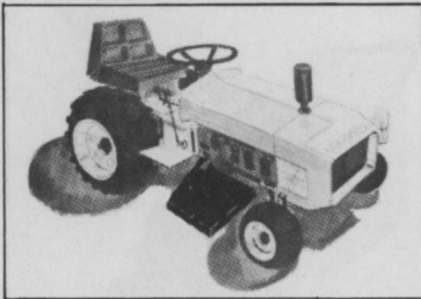


PUMP: This new 115 VAC centrifugal pump can be operated in or out of water and is engineered for continuous operation, says Proven Pumps Corp. Designed specially for silent, efficient, continuous circulation of water and other liquids, the pump is easily unclogged when necessary.

Circle 704 on free information card.

SLOPE RUNNER: Slope Tractor, Inc., introduces this new tractor with a rotary mower to complement its line of tractor and mowing machines that, according to the company, operate with safety, efficiency and comfort on sloping terrains. The unit has axles which tilt right or left, thirty degrees for mowing on grades up to 1.73 to 1.0. For operator comfort, the driving axle remains parallel to the slope while the driver and engine and wheels remain vertical. It also features a 2-post roll bar. The tilting mechanism is hydraulically operated with an automatic leveler.

Circle 705 on free information card.



HITCH: Here's an extending swing-out model hitch from Superflex Hitches that features an 80,000 lb. rolling load capacity for cars, trucks or tractors. The company claims it has a maximum 1,500 lb. tongue weight. The hitch extends out from the housing and swings onto the trailer tongue, making it possible for one man to hook-up the load. By backing up the towing vehicle, the hitch automatically locks into place. A cushion of Goodyear Neothane acts like a shock absorber to take out the tugging, swaying, or jerking caused by trailing loads.

Circle 707 on free information card.

LIFT: Maxon Industries claims this portable lift unit requires no underground post holes yet it has the strength to lift passenger cars, pick-up trucks, and vans weighing up to 7,000 lbs. The lifting capacity of this unit is designed for general repair work. It features three position settings which lock automatically at 14 in., 24 in., and 28 in. It incorporates all the safety and convenience of previous models, plus an extra margin of lifting strength for heavier loads, says Maxon.

Circle 706 on free information card.



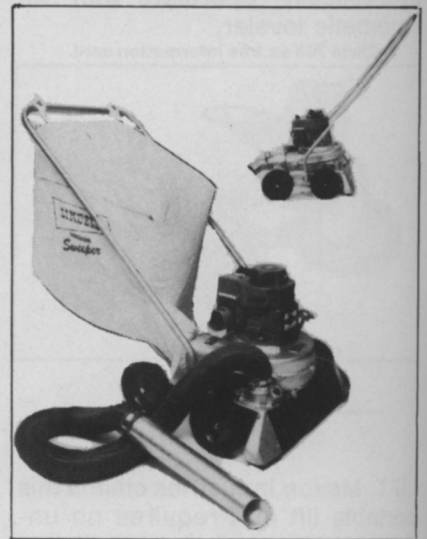
FITTINGS: Lasco Industries introduces these new gasketed pressure fittings for water distribution and irrigation systems. Extra-depth sockets in the fittings maintain integrity of the seal and compensate for earth movement, uneven trenches, expansion and contraction of the pipe, as well as lateral movement, says the manufacturer. These units use the supremacy of a sphere as the strongest shape for a pressure container.

Circle 708 on free information card.



SWEeper/BLOWER: The Lindell Power Sweeper is made almost completely of cast aluminum which is said to be a very dependable structure with a low maintenance factor. The four-wheeled machines are built in two sweeping widths, 24 in. and 27 in. Both units use a 3½ HP Briggs and Stratton gas engine. The 24 in. model has a breathing-type bag and the 27 in. unit has a larger dust resistant bag with a large zipper. Also new is an optional feature of a multi-directional blower discharge nozzle.

Circle 711 on free information card.



TURFLINE: Two new fiberglass "Turfline" sprayers from F. E. Meyers can be mounted on all utility cart boxes, as well as a Cushman Truckster chassis. The units are said to be effective in turf maintenance — fairways, greens, lawns, etc. — tree maintenance as well as for mosquito control. The TL40ESG is rated at 40 gpm and 30 psi, while the TL10ESG delivers 10 gpm and 30 psi. Ratchet ball valve with remote control rope actuator is standard. Many options are also available, including stainless steel booms with dripless nozzles, spray guns, anchor mounting kits, trailer kit with Terra Tires, etc.

Circle 709 on free information card.



DIGZ-ALL: This unit is equipped with a 37 HP Wisconsin VG4D engine. It is built primarily for heavy-duty trenching, says the manufacturer. ROPS and fully hydraulic backfill blade are standard components. Ground drive for trenching is infinitely variable and hydraulic. Trenching depth range is from 40 in. to 82 in. with a range of 5 in. to 18 in. trench width. Digging speed is 0 to 30 fpm.

Circle 710 on free information card.

SPRAYER: Universal's new Spray Doc features a non-corrosive polyethylene tank, a foldaway handle and quick-pressure pump, easy-grip discharge system with thumb release, an extra large filler cap and a tamper-proof automatic pressure release safety valve. The unit is available with tank capacities of 1½, 2 and 3 gallons.

Circle 712 on free information card.





**A W.I.N.ner
USES LESS...
LOSES LESS.**



Turf & Horticultural Products
Wilmington, Del. 19899

STH75-3

Be a W.I.N.ner with Nitroform®, the slow-release organic nitrogen that nourishes turf and seedlings in nature's own way. **Nitroform** ureaform assures a steady supply of water-insoluble nitrogen (W.I.N.) for long-lasting feeding.

Achieve W.I.N.ning results with fewer applications compared to conventional organic nitrogens.

A W.I.N.ner fertilizes turf efficiently and economically because **Nitroform** 38-0-0...

- Is non-leaching. Stays to feed turf and plants when growing conditions are right. When it's too cold, too hot, or too dry, the soil organisms, like all plants, do not feed. The unreleased **Nitroform** nitrogen stays stored in the soil.
- Feeds slowly. No sudden flush of growth to cause stress.
- Is non-burning. Especially important to seedlings.
- Cuts costs. Helps you fight the inflation battle by programming only the nitrogen needed.
- Saves labor. Fewer applications are required for equivalent nitrogen. Even inexperienced labor can apply without danger of burning.

Ask for a fertilizer containing Nitroform. With **Nitroform** you are always a W.I.N.ner!

**YOU USE LESS...
YOU LOSE LESS**
With **NITROFORM**®

A burst of brilliance... Fylking for the World's Fair!

Fylking Kentucky bluegrass is a superior, elite bluegrass that burst like a star on the scene in the sixties!

Since then Fylking has established records making it the perfect choice for the official grass at the environmental World's Fair, Expo '74.

Fylking has proven to have superior resistance to disease and drought; withstands traffic. Its thickly woven rhizome root system develops dense sod so quickly Fylking can be lifted in 90 days. Fylking can be mowed at 3/4 inch (even 1/2 inch) and thrive. It absorbs carbon dioxide pollutants, gives off oxygen, cools air by releasing water vapor.

A superior mixer, Fylking greens up earlier in spring, stays greener in summer heat, remains green longer into fall.

Choose Fylking and your customers are getting a grass good enough for a World's Fair!



FYLKING KENTUCKY BLUEGRASS

U. S. Plant Patent 2887

Another fine product of Jacklin Seed Company



Fylking's rhizome root system develops so thickly, under ideal conditions sod can be lifted in 90 DAYS.



Low growth, short leaf sheaths and abundant tillering of Fylking (right) compared with another elite bluegrass plant.



Cross section displays thick, luxuriant turf, fine leaf texture and brilliant green color of Fylking.

Classifieds

When answering ads where box number only is given, please address as follows: Box number, c/o Weeds Trees and Turf, 9800 Detroit Ave., Cleveland, Ohio 44102.

Rates: All classifications 50¢ per word. Box number, \$1. All classified ads must be received by Publisher the 10th of the month preceding publication date and be accompanied by cash or money order covering full payment.

FOR SALE

GRASS SOD: Meyer Z-52, Emerald and Matrella Zoysia-Tufcote Bermuda-Centepide 50 to 199 yards at \$1.70 per yard — 200 yards and up @ \$1.30 per yard. Ask for quotes on large quantities. Cartwright Nursery Company, Collierville, Tennessee 38017. Phone 901 853-2352.

USED EQUIPMENT

FOR SALE: 2 used aerial baskets — 50 ft. working height, 2 Asplundh brush chippers. Bean sprayer, 35 G.P.M. Vermeer stump cutter 1560. Parkway Tree Service, Milwaukee, Wisconsin. Phone 414 257-1555.

VERMEER TREE SPADE TS-30 TS-44T, and TS-66T. Bowie Hydro-mulcher 500 gallon, trailer model. Call for complete details. Phone 817 461-9209.

SEEDS

SOD QUALITY Seeds Merion, Fyking, Delta, Park, Newport, Nugget, Adelphi, Cheri, Glade and Baron bluegrasses also fine fescues. Manhattan rye grass. Custom mixing available. Michigan State Seed Co., Grand Ledge, Michigan 48837. Phone 517 627-2164.

HELP WANTED

WANTED

Graduate in ornamental horticulture, arboriculture or related disciplines, 8 to 10 years' experience. Sales/Marketing background in "Green" industry. Willing to relocate. Income commensurate with qualifications.

Send resume to Box 141
WEEDS TREES & TURF
9800 Detroit Ave.
Cleveland, Ohio 44102

MANAGER FOR SALES — estimating department for well established landscape contracting firm in suburban Philadelphia. Should have minimum three years experience, a college degree and a desire to work hard and enjoy the benefits of such work. We do mostly public and commercial work in four states. Salary plus commissions, company car and benefits. Heyser Landscaping, Inc., 400 North Park Ave., Norristown, Pennsylvania 19401. Phone 215 539-6090.

IMMEDIATE OPPORTUNITY for competent head gardener on thirty acre Rhode Island estate. Applicant must be capable of producing a variety of flowers, plants and vegetables. Knowledge of turf maintenance essential. Six men employed. Write Box 140, Weeds, Trees & Turf, 9800 Detroit Ave., Cleveland, Ohio 44102.

SALES REPRESENTATIVES: to work in the Central Florida Area, must have knowledge of all types of tree work. Commission plus small salary. Send resume or call. AAA Tree Service, P.O. Box 6173, Orlando, Fla. 32803. Phone 339-5242.

POSITION WANTED

HORTICULTURIST: Challenging supervisory position desired. Reply Box 143, Weeds, Trees and Turf, 9800 Detroit Avenue, Cleveland, Ohio 44102.

Golf Architects New Survey Examines Slow Play Problem

What can the golf course architect do in his design to speed up play?

Reduce hazards and size of greens was the most frequent response of members of the American Society of Golf Course Architects in a recent survey. Other answers ranging from fairway adjustments to building more golf courses also came into play.

"Puttering" around on monstrous greens and flailing away in sand traps are time-consuming, frustrating experiences for golfers as well as those waiting in the fairway.

The obvious solution? "Create fewer hazards," according to ASGCA vice president Edwin B. Seay of Ponte Vedre Beach, Fla. "Design medium-sized greens," argue Albert Zikorus of Bethany, Conn., and ASGCA president Geoffrey Cornish, Amherst, Mass.

Hazards and excessively large greens alone are not to blame for the slow play problem. The imaginative professionals who design golf courses are well aware that golfers' abilities determine the degree of ease with which they conquer challenges. "Eliminate some sand traps and water hazards that bother the average player," is the solution of William H. Johnson of Rialto, Calif. Roger B. Packard, LaGrange, Ill., and Houston's Joseph Finger also feel the average player should be kept in mind when designing hazards. Looking at other variables along with hazards, W. Bruce Matthews, Grand Haven, Mich., suggests, "Analyze each hole for play by the 'average player'."

Further agreement is expressed by William James Spear of St. Charles, Ill., who says, "Do not use an overabundance of hazards and locate them so they primarily catch

Advertisers

Adelphi Kentucky Bluegrass	.19
Austin Products, Inc.	27
Bartlett Mfg. Co.	28
Brouwer Turf Equipment Ltd.	11
Bunton Co.	11
Chipman Div., Rhodia, Inc.	8-9
Diamond Shamrock Chemical Co.	10
E. I. duPont de Nemours & Co., Inc.	6
Ford Tractor & Implement Operations	3
Hercules, Inc.	47
Hesston Corp.	13
Hypro, Inc.	28
International Spike, Inc.	15
Jacklin Seed Co. 2nd cover,	48
Jacobsen Mfg. Co.	3rd cover
Lofts Pedigreed Seed Co.	4th cover
Manhattan Ryegrass Growers Assn.	7
J. J. Mauget Co.	35
McDowell Mfg. Co.	31
F. E. Myers & Bros. Co.	23
Northrup-King Co.	5
Princeton Mfg. Co.	30
Stihl, Inc.	21
Swift Chemical Co.	25
Willamette Seed and Grain Co.	17

the low handicap golfers." Spear introduces another aspect: "Keep wooded areas adjacent to fairways free of undergrowth so golfers can easily locate their balls." That would certainly be a welcome relief, not only from the speed-of-play angle, but financially as well!

William Howard Neff of Salt Lake City has a five-point program aimed at faster play on the links: "1) Keep the number of hazards to a minimum, yet effective for strategic play; 2) keep green sizes between 6,000 and 7,500 square feet; 3) avoid severe slopes on putting surfaces; 4) keep landing areas generous but well defined; 5) avoid use of shrubs, bushes and higher grass in play areas."

Fairway design is another area that was frequently mentioned as architects considered ways that their designs could speed up play. "Avoid possible conflicts of adjoining fairways; widen the fairways at distances beyond ability to reach greens.

Trimings

The person who said that necessity is the mother of invention surely must have been referring to golf course superintendents when he made that famous claim. We've seen more improvised tools and pieces of equipment redesigned and concocted for a specific job by enterprising superintendents than any other group. Well, all you inventors take notice. To meet with changing requirements in the current marketplace, U.S. companies are constantly looking to introduce new products in order to maintain leadership. A constant search has been underway to develop or locate these products. Over 50 percent of the items being sold today will be obsolete within the next five years. Sources also claim that industry has turned to the independent innovator to help supplement the billions of dollars being spent on research and development. Some companies have established departments for the sole purpose of reviewing and evaluating submissions from outsiders. So, to accommodate all you would-be Edisons there's a new brochure available free of charge to inventors. For your copy write: "The Link Between the Inventor and Industry," One Biscayne Tower, 2 South Biscayne Blvd., Miami, Fla. 33131.

Much has been said about slow play on the golf course and what to do about it. But a recent slow play incident on a Washington, D.C. area public course may be the first to have brought serious injuries and police action to the golfers involved. According to reports from National Golf Foundation, a foursome insisted on playing through and so drove their balls close to the foursome ahead. Then, it is alleged, one of the players in the lead group drove one of the balls from the trailing group into the woods. The trailing group then drove their golf cars to where the lead group was playing and demanded the lead group retrieve the ball from the woods. A fracas followed that left one golfer hospitalized with a fractured skull,

another suffered severe lacerations requiring seven stitches. Also included in this melee were three broken golf clubs used to speed-up play. Who said golf was a gentleman's game?

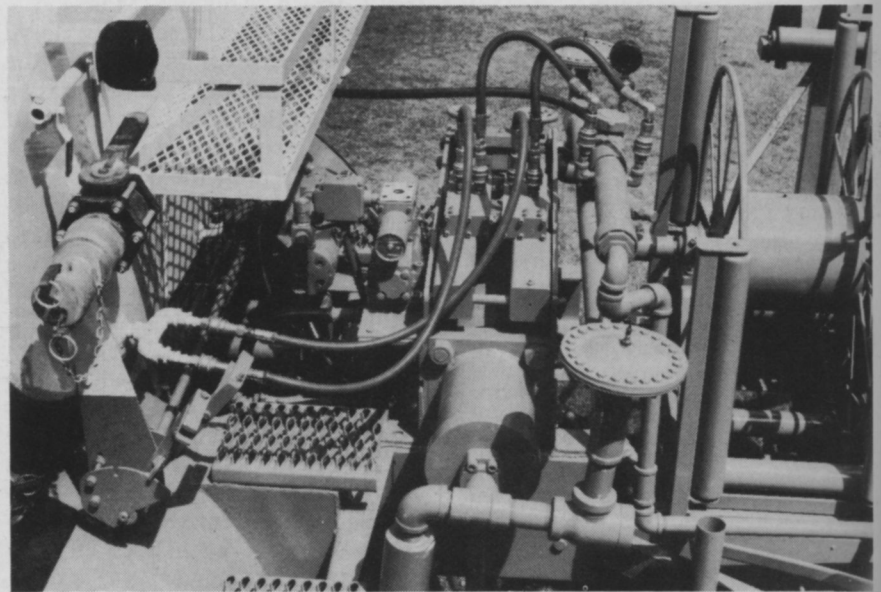
Zipp-Penn recently released an expanded chain saw catalog. It offers chipper chain, safety chain and skip-tooth chain in loops and reels to fit practically all current popular makes of saws. Ripping chain, full-house chain and pond and deck chain are available in reels. Other chain saw equipment is also pictured and priced in the new publication. A copy of the catalog is free on request from: Zip-Penn Catalog Office, Box 43073, Middletown, Ky. 40243.

Recent predictions placed Dutch Elm Disease in California in three to five years. Unfortunately, the disease is already there, being detected in Sonoma County, and Napa County, some 35 miles north of San Francisco and also on the peninsula, south of San Francisco, in Santa Clara County. The infected counties have put into operation the DED Project, in areas of the disease survey, identification, tree removal, treatment, trapping and quarantine. In addition to county participation, the project includes 12

permanent and 35 seasonal state employees. The State's DED lab was also recently moved from Sacramento to Napa County. A total of 481 diseased and exposed Elms have been removed and 331 trees have been sprayed and over 100 woodpiles have been fumigated. Traps have also been set to capture the Bark Beetle.

Chief of the U.S. Forest Service, John McGuire, called for Americans to "dedicate ourselves to expanding our public and private forests as well as managing better the forest lands we have. This requires the close cooperation of business, industry, government and individual citizen."

U.S. District Court in Lincoln, Neb., ordered Morrison-Knudsen, Inc., Boise, Idaho, to give back pay with interest to five of the company's Sutherland, Neb., workers who had been discharged after they walked off their jobs because of hazardous working conditions. In a judgment, filed by the court, without contest by the company, Morrison-Knudsen was permanently enjoined and restrained from violating provisions of OSHA, that protects employees against discrimination for exercising their rights under the act.



In the May 1975 issue of WEEDS TREES AND TURF we ran an article on John Behey's answer to pesticide safety — the proportional mixing spray rig. Since our interview with Behey, he has made some design changes and signed up the Weyer Engineering and Manufacturing Co., Enumclaw, Washington, to produce the unit for the commercial market. Pictured above is a Weyer manufactured unit. Behey hopes to have his new models ready for sale before 1976.