

Meeting Dates

Canadian Parks and Recreation Association, annual conference, Quebec City, Aug. 10-14.

International Shade Tree Conference, 51st annual meeting, Heritage Hotel, Detroit, Mich., Aug. 10-14.

Rhode Island Golf Course Superintendents, annual turfgrass field day, University of Rhode Island, Kingston, R.I., Aug. 20.

Illinois Turfgrass Foundation, Golf Day, Indian Lakes Country Club, Bloomingdale, Ill., Aug. 25.

Irrigation Seminar, sponsored by the Northern California Turfgrass Council, Asilomar Conference Grounds, Pacific Grove, Calif., Sept. 5-7.

Turf and Landscape Day, Ohio Agricultural Research and Development Center, Wooster, Ohio, Sept. 9.

Pacific Horticultural Trade Show, San Diego Convention Center, San Diego, Calif., Sept. 13-15.

Illinois Turfgrass Foundation, Inc., 1975 Field Day and Open House, University of Illinois, Urbana, Ill., Sept. 16.

California Association of Nurserymen, annual convention, Town and Country Hotel, San Diego, Calif., Sept. 16-18.

Transworld Home Horticulture Exhibit, International Amphitheatre, Chicago, Ill., Sept. 21-24.

Outdoor Pest Services Clinic, sponsored by the National Pest Control Association, Inc., Kansas City, Kan., Sept. 26-27.

National Agricultural Chemicals Association, 42nd annual meeting, Greenbrier, White Sulpher Springs, West Virginia, Sept. 28-Oct. 1.

Rocky Mountain Turfgrass Equipment and Products Show, Adams County Regional Park, Oct. 2.

Hort-I-Scope, International Short Course, Curtis Hixon Hall, Tampa, Fla., Oct. 2-4.

National Bark Producers Assoc., Inc., Key Biscayne Hotel, Key Biscayne, Fla., Oct. 2-5.

Florida Nursery and Allied Trades Show, Curtis Hixon Hall, Tampa, Fla., Oct. 3-5.

Florida Turfgrass Conference and Show, Sheraton Towers, Orlando, Fla., Oct. 12-16.

Kentucky Turfgrass Council Conference and Field Day, Barren River State Resort Park, Lucas, Ky., Oct. 14-15.

Southern California Turfgrass Council, 15th annual turfgrass equipment and materials exposition, Orange County Fairgrounds, Costa Mesa, Calif., Oct. 22-23.

26th Central Plains Turfgrass Conference, Manhattan, Kan., Oct. 22-24.

National Insititute on Park and Grounds Maintenance, 5th annual educational conference, Chase Park Plaza Hotel, St. Louis, Mo., Nov. 3-6.

Better Trees for Metropolitan Landscape, U.S. National Arbortem, Washington, D.C., Nov. 4-6

GET A BELT FROM YOUR BLUEGRASS

Touchdown Kentucky Bluegrass will give you outstanding Bluegrass performance and... Pickseed and Lofts will give you an original brass buckled belt for trying Touchdown.



Order a minimum of 100 pounds of Touchdown Kentucky Bluegrass for 1975 delivery and seeding and you'll receive FREE, this original brass buckled, leather belt, custom designed for Pickseed and Lofts.

Then hitch up your pants with pride at the performance of Touchdown.

- Disease resistance — Leaf spot, Leaf rust, Stripe smut
- Fast turf development
- Bright green color and early spring green up
- Thrives under conditions of low mowing and "lower than Merion" nitrogen rates
- Excellent, professional quality seed

To get your Touchdown and your belt, contact:

PICKSEED WEST, INC.

Box 888
Tangent, Oregon, 97389
(503) 926-8886
Kent Wiley or Dick Brown

LOFT-KELLOGG, INC.

Box 684
Milwaukee, WI 53201
(414) 276-0373
Don Stein

LOFTS PEDIGREED SEED, INC.

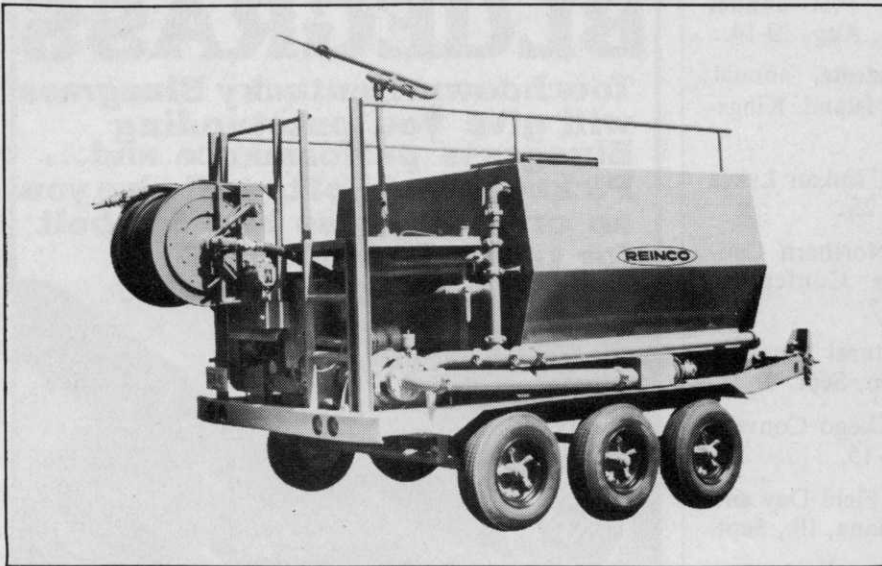
Box 146
Bound Brook, NJ 08805
(201) 356-8700
Peter Loft or John Morrissey

OTTO PICK & SONS SEEDS LTD.

Box 126
Richmond Hill, Ont. Can.
(416) 884-1147
Tom or Martin Pick

Circle 117 on free information card

New Products



BIGGER HYDROGRASSER: This is the new 1,000-gallon hydrograsser from Reinco, called the HG-10-A. It is mounted on its own trailer and carries the fully charged load of 2,500 pounds of granular solids anywhere. Any truck size can be used to pull the unit.

Circle 701 on free information card.

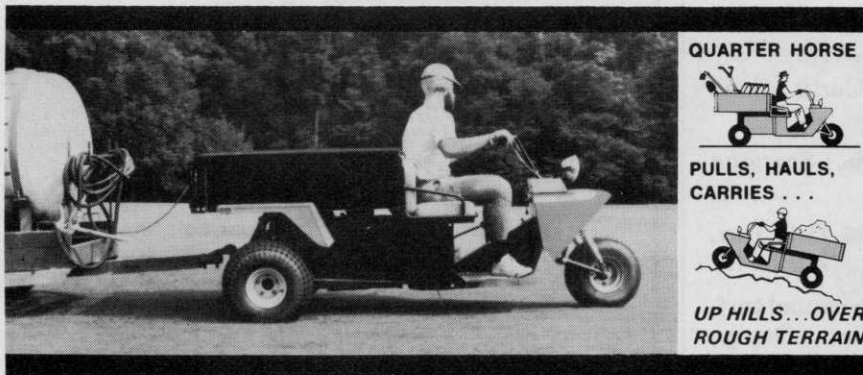


LOAD HANDLER: It's a new unit for handling sod from Foxcroft Development . . . a unit which can handle sod and then be attached to a truck or trailer bed for transportation. The unit is powered by a 25-HP Onan, has a 3,000-lb. carrying capacity, turning radius of 69 inches and maximum pallet width of 56 inches.

Circle 702 on free information card.

Get a Quarter Horse!™.

the utility vehicle that ends costly breakdowns and high repair bills



QUARTER HORSE



PULLS, HAULS,
CARRIES . . .



UP HILLS . . . OVER
ROUGH TERRAIN

- steady, proven Tecumseh engine with standard parts available locally from over 10,000 dealers
- rugged power train with "torque sensitive" automatic transmission . . . proven in hundreds of thousands of vehicles



Write now for brochure, prices and name of nearest dealer

PROMARK PRODUCTS CORPORATION

P.O. Box 708 • Norwalk, Ohio 44857 • Telephone (419) 668-3721



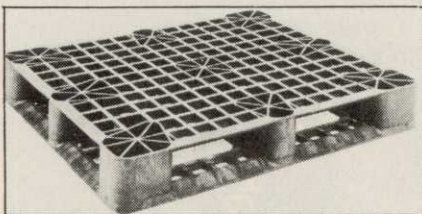
ELECTRIC: Hesston has an electrically driven, hopper-type portable spreader available as an optional attachment on its Front Runner FMT. It's called the SP-300 and can handle variable spreading widths up to 50 feet.

Circle 703 on free information card.



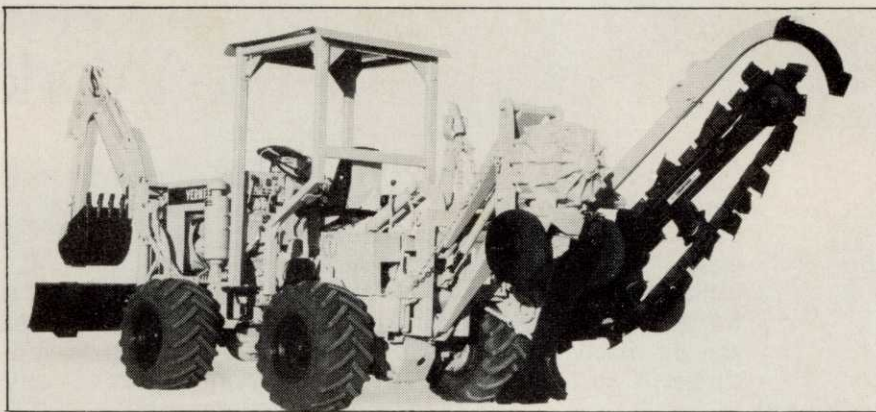
SERT-A-DUMP: This truck-body unit from Pac-Craft Products has a 5,000-lb. capacity and can mount on a ¾ or 1-ton truck body. It operates from a truck or car 12V battery and has a hydraulic pump system.

Circle 708 on free information card.



REUSABLE: This is a reusable plastic pallet from Phoenix Plastics which the manufacturer says has a life expectancy of 10 to 15 years. It can take a dynamic load of 2,200 pounds, the company says. The firm has announced that the pallets are now available for export to the United States from the Netherlands. Pallets are produced there by the injection molding process, with rounded corners on all sides.

Circle 709 on free information card.



COMBO: It's a combination unit from Vermeer that now handles several functions without additional attachments . . . it's a trencher, plow, backhoe, backfill blade and boring tool. It is made possible by addition of a combination trencher-vibratory plow attachment on the Vermeer M-470 tractor.

Circle 704 on free information card.



LOW PROFILE: The new 46 IEMC hp International 2400B industrial tractor from International Harvester is for mowing, blade work, scarifying, loading and backhoe operations. It's available in regular and Lo-Boy.

Circle 706 on free information card.



Regal Chemical bags it!

NITROFORM*
organic nitrogen

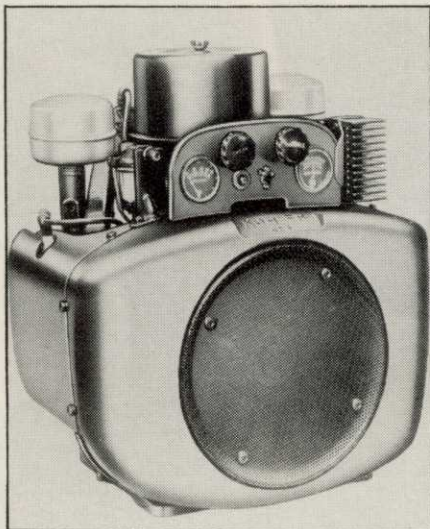


The nitrogen that pampers delicate turf. Feeds slowly instead of causing surges of growth that can cause stress.

Turf and Horticultural Products, Synthetics Dept.
Wilmington, Delaware 19899

*Registered trademark of Hercules Incorporated. STH74-22BR

For More Details Circle (142) on Reply Card
AUGUST 1975



23-HP: Kohler has a new two-cylinder engine called Model K582S, rated 23-HP. The engine pictured is equipped with 12-volt automotive-type starter, 15-amp alternator, and a control panel for ignition switch, amperage and oil pressure gauges, and choke and throttle controls.

Circle 707 on free information card.



Lawn & Golf bags it!

NITROFORM*
organic nitrogen



The easy-handling, slow-release nitrogen that gives uniform coverage in any type spreader.

Turf and Horticultural Products, Synthetics Dept.
Wilmington, Delaware 19899

*Registered trademark of Hercules Incorporated. STH74-10BR

For More Details Circle (159) on Reply Card

A burst of brilliance... Fylking for the World's Fair!

Fylking Kentucky bluegrass is a superior, elite bluegrass that burst like a star on the scene in the sixties!

Since then Fylking has established records making it the perfect choice for the official grass at the environmental World's Fair, Expo '74.

Fylking has proven to have superior resistance to disease and drought; withstands traffic. Its thickly woven rhizome root system develops dense sod so quickly Fylking can be lifted in 90 days. Fylking can be mowed at 3/4 inch (even 1/2 inch) and thrive. It absorbs carbon dioxide pollutants, gives off oxygen, cools air by releasing water vapor.

A superior mixer, Fylking greens up earlier in spring, stays greener in summer heat, remains green longer into fall.

Choose Fylking and your customers are getting a grass good enough for a World's Fair!



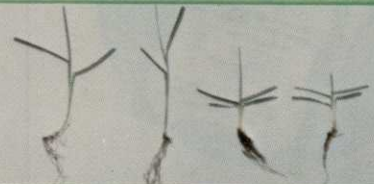
FYLKING KENTUCKY BLUEGRASS

U. S. Plant Patent 2887

Another fine product of Jacklin Seed Company



Fylking's rhizome root system develops so thickly, under ideal conditions sod can be lifted in 90 DAYS.



Low growth, short leaf sheaths and abundant tillering of Fylking (right) compared with another elite bluegrass plant.



Cross section displays thick, luxuriant turf, fine leaf texture and brilliant green color of Fylking.

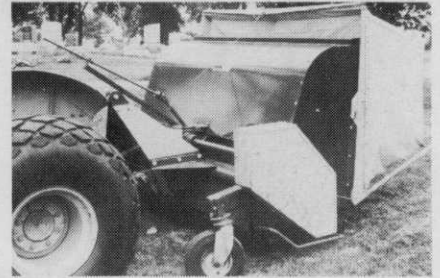


A MILLION: Simplicity has a "special edition" lawn and garden tractor, the 5010 LTD to commemorate building of its one millionth product unit. Each model is personalized for its owner.
Circle 718 on free information card.



THREE WHEELERS: Hesston has the new Front Runner Three Wheeler, available in either a 16 hp or a 19.8 hp model. It has a heavy-duty automotive gear box with rack and pinion steering. Front-wheel hydrostatic drive and high-flotation turf tires are meant to give stability and traction. The manufacturer says one lever controls instant forward/reverse and infinitely variable speeds from 0 to 11 mph in either direction with no gears to shift.

Circle 717 on free information card.



GENIE: Mathews Company has introduced the Lawn Genie, a unit to clean turf, mow grass, sweep lawns, produce mulch and vacuum shrubbery. It is available in 36", 60" and 72" cutting widths. The manufacturer says the unit's vacuum action will sweep small braches and twigs, even cans, into the hopper. When the hopper is full, the self-cleaning hopper will release the material itself.

Circle 714 on free information card.



JIFFY DUMPER: This unit, from B.R.O.T. Incorporated, has a self-contained hydraulic lift and fits pickups, fleetside or stepside (Ford, Chevy, Dodge, International). It is called the Jiffy Dumper, able to dump up to 3,000 lbs.

Circle 710 on free information card.



CHAIN BRAKE: McCulloch's Mini Mac 25 chain saw is now equipped with a chain brake to help reduce the hazard from "kickback".

Circle 715 on free information card.

AQUATIC WEED CONTROL



WEED PROBLEMS IN YOUR LAKE OR POND?

Often referred to as the ecology fish, the White Amur has proven to be the most economical way to control under-water weeds, grasses, moss and algae. The AMUR eats only vegetation, does not eat other fish, does not reproduce in your pond and will give control for 10 years or more. The AMUR has been used very successfully in private lakes, golf course ponds, and industrial waters. Fish should be stocked only in confined waters.

**For Further Information: Write Sea-Ranch Inc.
Rt. 2, Box 604, Sheridan, Ark. 72150 or call, 501-942-2515**

Circle 125 on free information card

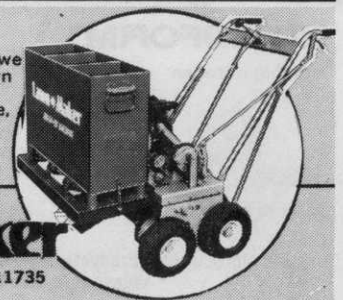
THIS POWER MACHINE AERATES AND PRECISION-DISPENSES THREE TURF MATERIALS SIMULTANEOUSLY.

seed, fertilizer, controls, etc.

If you service lawns, or plan to, we have a complete "automated lawn service" management, training and marketing program available, free with your LAWN MAKER combine. This machine is also excellent for Greens.

Lawn Maker

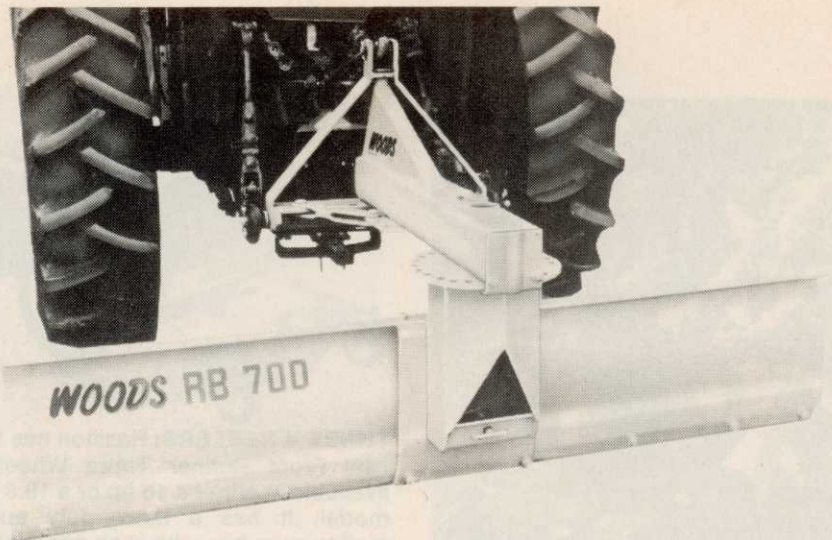
57 Verdi St., Farmingdale, N.Y. 11735



Circle 153 on free information card



MODULARMATIC: Ditch Witch has a new model (the R100) of Modularmatic underground equipment. This concept, the manufacturer explains, permits one basic vehicle to perform varied underground jobs simply by switching interchangeable modules. The R100 may be equipped with three digging boom lengths of 4, 6 or 8 feet.
 Circle 711 on free information card.



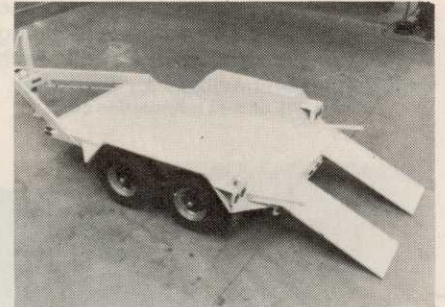
REAR BLADE: The WOODS Division of Hesston has announced a medium-duty Rear Blade for scraping and ditching, in 6, 7 or 8-foot widths, for tractors up to 60 HP.
 Circle 705 on free information card.



GRASSHOPPER: This Grasshopper model, Moridge Manufacturing, retains operator-comfort features of previous models, the manufacturer says, while controls have been made more responsive.
 Circle 712 on free information card.



POWER ROTARY: This power rotary spreader, the PT-10 being marketed by ProTurf Division of O. M. Scott & Sons, was designed to be used on the tailgate of a utility vehicle such as a Cushman Truckster or Toro Workmaster. It's powered by an electric motor on a 12-volt battery, has 2,800 cu. in. hopper capacity and a 1,400 cu. in. hopper extension. The PT-10 mounts on class "O" three-point hitches and most drawbar attachments, according to the manufacturer.
 Circle 713 on free information card.



WEIGHS A TON: Hyland Manufacturing has a new heavy-duty utility trailer with a 10,000 lb. carrying capacity. It is equipped with a standard ball-hitch for use behind any pick-up or heavy car. It weighs about a ton, is constructed of 3/16" diamond plate steel, is equipped with dual rear loading ramps and comes in 10-18' standard production lengths. The 72"-wide body is mounted on dual axles with 8.00 x 14.5, 12 ply tires. It can be ordered with either Surge or electric brakes. Hyland is known for fifth-wheel commercial cargo vans and truck bodies in dry or refrigerated models. The firm customizes to specification on all units.
 Circle 716 on free information card.



Hill bags it!
NITROFORM*
 organic nitrogen



The slow-release nitrogen that helps turf keep its good looks without repeated fertilizing. Use it to save labor.

Turf and Horticultural Products, Synthetics Dept.
 Wilmington, Delaware 19899
 Registered trademark of Hercules Incorporated. STH74-7 BR

46 Circle 144 on free information card

PRINCETON

EQUIPMENT FOR THE SOD INDUSTRY

(Ask the Man Who Owns One)

PRINCETON MFG. CO.

2625 Johnstown Road, Columbus, Ohio 43219
 Tel. (614) 475-8520

Circle 102 on free information card

WEEDS TREES and TURF

People on the Move

H. J. (Jack) Boatwright, Jr., now manages the Industrial Chemicals marketing group of U.S. Borax. In related changes, **Roger Hinchman**, formerly general sales manager, was promoted to assistant to the executive vice president—marketing. In the Industrial Chemicals Marketing group, **Ben M. Allen**, was named manager—marketing operations and **Warren G. Coray**, was promoted to sales manager. In the plant foods Marketing Group, **J. R. (Jim) Turner**, was promoted to sales manager.

* * *

E. S. (Duke) Newton appointed to the post of director of turf irrigation sales for the Irrigation Group of the Toro Co. Toro also announced the election of **Donald R. Brattain** to the post of vice president—human resources.

* * *

Kohler Co. has reassigned three men to their home office. The men and their assignments are: **Robert A. Leffel**, manager—national Accounts; **Timothy L. Neugent**, account executive; and **Alan J. Wilson**, account executive.

* * *

Tom Rutherford has been named area manager—commercial developments for the Velsicol Chemical Co. In his new position, Rutherford will be responsible for development of turfgrass and pest control products.

* * *

Gerald R. Nitz has been to an agricultural chemical district sales manager for the Elanco Products Co. **David K. Putnam** was named market development advisor in the worldwide agricultural marketing planning division.

* * *

Prof. Carl F. Gortzig has been appointed chairman of the Department of Floriculture and Ornamental Horticulture at the N.Y. State College of Agriculture and Life Sciences, Cornell University, for a five-year term, effective July 1.

* * *

R. F. Mitchell, Jr., was recently accepted to the board of directors of Lawn and Garden Supply Co., Tucson, Ariz.

* * *

D. George Harris has been elected to the newly created position of president and chief operating officer of Rhodia, Inc. In other company moves, **Michel Paul Lavalleye** appointed director, product development of all products developed and marketed by the Agricultural Division of Rhodia. **Denise Wright** promoted to the Division's advertising assistant.

* * *

Melnor Industries named **Seymour H. Graye** to senior vice president. **Eugene C. Okin** was promoted to group vice president—marketing. And **Michael C. Raphael** was assigned new products manager.



BAKER OFFERS SALES, RENTAL OR LEASING PLANS ON THEIR NEW B-SERIES AERIALS

Check the many features of Baker's all new B-Series Aerials. Available in 50 and 65 foot heights, totally new design cuts out chains, cables, scissors. Simplicity of action with only one cylinder and three hinge points at elbow, platform and mounting.

No complicated machinery buried inside boom—nothing to dismantle for maintenance. Just regular lubrication of outside fittings will keep B-Towers going year after year.

The result—lowest total cost for any tower you can buy today. Low maintenance and less downtime make B-Series Aerials the best money savers in the business.

Baker has several of these B-Series units in their rental fleet for your short term needs or can arrange lease plans to fit your particular situation. Give us a call today (804) 358-0481 and ask for a B-Series demonstration.



BAKER EQUIPMENT ENGINEERING COMPANY

1700 Summit Avenue
Richmond, Virginia 23260

Charlotte, N.C. • Pottstown, Pa. • Atlanta, Ga.
Columbus, Ohio • St. Petersburg, Fla. • White Plains, N.Y.

Classifieds

When answering ads where box number only is given, please address as follows: Box number, c/o Weeds Trees and Turf, 9800 Detroit Ave., Cleveland, Ohio 44102.

Rates: All classifications 50¢ per word. Box number, \$1. All classified ads must be received by Publisher the 10th of the month preceding publication date and be accompanied by cash or money order covering full payment.

FOR SALE

ARPS stump cutter teeth, top quality and best price in U.S.A., D. J. Andrews, Inc., 17 Silver St., Rochester, New York 14611. Call 716 235-1230.

WHOLESALE SOD business, Florida location, before depreciation profit \$75,000 on 1974 sales of \$385,000. Priced to sell. Box 134, Weeds Trees & Turf, 9800 Detroit Ave., Cleveland, Ohio 44102.

OVER 800 TAXUS SHRUBS for sale. 24" to 4' high. May leave at present location one year. \$5,000.00. Sycamore Tree Service, Sycamore, Ohio 44882. Phone 419 927-9752.

USED EQUIPMENT

FOR SALE 1974 Toro Groundsmaster 72 mower, 300 plus hours, excellent, \$4000.00. 1974 Excel Hustler mower, 150 hours, excellent \$4200.00. 1974 Rogers Aero-Seeder, seeded less than 20 acres, new blades, perfect, \$1650.00. T. Nelson, Beecher, Illinois 60401. Phone 312 946-2133; 312 798-7072.

FOR SALE: Used Ryan 18" auto-cut-off sod cutter with sulky. May be seen at Oak Harbor, Ohio. Phone 419 893-2311 or 308 697-4686.

FOR SALE: 2 used aerial baskets — 50 ft. working height, 2 Asplundh brush chippers. Bean sprayer, 35 G.P.M. Vermeer stump cutter 1560. Parkway Tree Service, Milwaukee, Wisconsin. Phone 414 257-1555.

HYDROSEEDER, Hydroturf 600 gallon, one year old, excellent condition. Cost new \$4000, sacrifice at \$3000. Lawn Medic, 212 Cobblestone, East Peoria, Ill. 61611. Phone 309 699-0780.

VERMEER TS-30A tree spade, Bowie Victor 500 hydro-mulcher. Phone 817 469-8943.

SEEDS

SOD QUALITY Seeds Merion, Fylking, Delta, Park, Newport, Nugget, Adelphi, Cheri, Glade and Baron bluegrasses also fine fescues. Manhattan rye grass. Custom mixing available. Michigan State Seed Co., Grand Ledge, Michigan 48837. Phone 517 627-2164.

LAWN SEEDS Wholesale. Full line of quality grasses. Fescue, Ryegrasses and Bluegrass varieties including Fylking, Nugget and Glade. Write today or call collect for price quotations. (216) 753-2259. Oliger Seed Company, 2705 Wingate, Akron, Ohio 44314.

HELP WANTED

DISTRIBUTORS for D. J. Andrews, Inc. stump cutter teeth, pockets and bolts. Best wholesale and retail price in U.S.A. Add to this exclusive area, local advertising at our expense, etc., and you have our story. D. J. An-

drews, Inc., 17 Silver St., Rochester, N.Y. 14611. Call 716 235-1230, or 716 436-1515.

WANTED MANUFACTURERS' REPRESENTATIVE Long established manufacturer of quality irrigation controls desires representation in Southern California area, including Arizona and Clark County, Nevada. Sales thru established distributors and O.E.M. accounts. Warehouse desirable to handle Consigned Stock. Write Mike Bizozco, Tork Time Controls, 1 Grove St., Mt. Vernon, New York 10550.

MARKETING REPRESENTATIVE Landscape Maintenance Industry — Excellent opportunity for ambitious man or woman with leading company in Dallas-Ft. Worth Metroplex. Applicant must have knowledge of all aspects of Professional landscape maintenance. Prefer 3 years sales experience. Earnings unlimited. Send complete resume to: Loyd Smith, Maintain, Inc., 2549 Southwell, Dallas, Texas 75229.

MISCELLANEOUS

EQUIPMENT SERVICE AND PARTS — New England and New York State. Authorized servicing of aerial lifts and chippers by factory trained personnel. Specializing in Asplundh and Skyworker. Two convenient locations plus complete road service. Service contracts available. Call C.U.E.S., Inc., 603 889-4071 or 203 634-3146.

Sloane Ends 2-Year Strike Votes Out Rubber Union

R & G Sloane Manufacturing Company, Inc., a wholly-owned subsidiary of The Susquehanna Corporation, reported the termination of a twenty-seven month strike by the United Rubber, Cork, Linoleum and Plastic Workers of America, AFL-CIO at the Sun Valley, California plant. On June 19, 1975, the National Labor Relations Board certified an election, held at the Sun Valley plant during the previous month, in which Sloane's employees voted 164 to 11 to decertify the United Rubber Workers Union as authorized bargaining agent, thus ending what is believed to have been one of the longest strikes in Southern California history.

Sloane's management expressed satisfaction with the vote of confidence by its employees. The nationwide boycotting of its products, which had taken place intermittently during the strike, is now at an end.

EDITORIAL (from page 6)

businessman who is in the business can bypass the benefits by remaining a non-member.

Like most groups with which we have worked, the ASPA has its

Advertisers

Adelphi Kentucky Bluegrass ..25	
Austin Products Inc.11	
Baker Equipment Engineering Co.47	
Bunton Co.35	
E. F. Burlingham & Sons31	
Cushman Motor Div., OMC-Lincoln13	
Ditch Witch Trenchers37	
E. I. duPont de Nemours & Co., Inc. 3	
FMC Corp., Sweeper Div.30	
Ford Tractor Implement & Operations..... 7	
Hercules, Inc.32,38,39	40, 43, 46
Hesston Corp.2nd cover	
Jacklin Seed Co. 8, 44	
Jacobsen Mfg. Co..... 3rd cover	
Jobe's Tree Food Spikes 4	
Kohler Co..... 9	
Lawn Maker, Inc.45	
Lofts Pedigreed Seed Co..... 4th cover	
Loft/Pickseed41	
Mott Co.34	
Olin, Agricultural Div.23	
Pennfine Perennial Ryegrass...10	
Perlite Institute29	
Princeton Mfg. Co.....46	
Promark Products Corp.....42	
Reinco, Inc.33	
Rhodia, Inc., Chipman Div.....20-21	
Rohm & Hass, Turf & Ornamentals19	
Sea Ranch, Inc.45	
Safety Test & Equipment Co. 6	
Solo Motors24	
The Toro Company36	
Tuco Div., Upjohn Co.18, 50	
Vermeer Mfg. Co.36	

strong member leaders. They were directly responsible for the early growth. Also, at this point, we have to mention the strong leadership of Dr. Henry Indyk of Rutgers University who for several years served as the executive secretary along with his university position. He put together a number of strong educational programs and several successful field day extravaganzas.

Association membership costs time and money. But it is usually the best expenditure of funds in terms of gainful management tips which you can make.

Trimnings

The Finite Element Method, a computer-fed image flashed on a screen, allows engineers to visualize weaknesses in a design. For example, a light pen which the engineer touches to any sub-component of the structure can be computer programmed to exert a given force to that area. The cubes actually deform before his eyes if the design is faulty. Using this visual examination, researcher and development engineers can resolve many problems before the first prototype is made.

Biological control methods are here to stay. According to a report in a recent issue of GRIT Magazine, a few researchers are planning for the day when herds of Southeast Asian water buffalo will roam the banks of

ivers and lakes in Florida chomping away on water bonnets, hyacinths and other weeds. Hugh L. Popenoe, director of the tropical agricultural center of the Institute of Food and Agricultural Sciences at the University of Florida at Gainesville, readily admits that water buffalo may be a very economical way of controlling aquatic weeds. The water buffalo is the latest in a long line of attempts to control water weeds clogging inland waterways in Florida. The white amur, an Asian weed-eating fish, was given an audition about three years ago. But Florida officials, according to the article, fear the giant fish, which can reach 80 pounds, might upset the natural balance of the waterways. Sea cows, or giant manatees, were also tested, but these sluggish mammals got in the way of motorboats, and many were killed. Popenoe said

that he has been trying for six years to import water buffalo, which can reach a weight of 2,000 and can eat up to 300 pounds of weeds daily.



When Stihl American decided to hold a Fight the Recession rally as part of their on-going campaign to boost confidence in the economy, it was only natural that a virtuoso wood-cutting demonstration be included in the day's program. Here Gordon Williams, chairman of Stihl, looks on while Janine Martella, Cliffside, N.J., tries the chair on for size.

Symposium Features Shade Tree Evaluation

The Ohio Agricultural Research and Development Center (OARDC) and Ohio Chapter, International Shade Tree Conference (ISTC) recently co-sponsored a Shade Tree Day at the Center's Wooster, Ohio facility.

The Shade Tree Symposium program and ISTC meeting were featured activities during the morning session. The one-day program was concluded by wagon tours to the Shade Tree Evaluation Plot in Secrest Arboretum.

L. C. Chadwick, professor emeritus Ohio State University (OSU) and OARDC, told the morning audience of nearly 200, that since the first planting in 1965, 140 different kinds of trees have been established in the evaluation plot. One of the methods used in selecting the desirability of the trees, Chadwick said, is to relocate and establish them in different areas throughout the state. "Our idea is to plant and observe the trees under different growing conditions than those conditions here at the arboretum," he said.

Frank S. Santamour, supervisory research geneticist, U. S. National Arboretum, Washington, D.C., presented his opinions on the new cultivars and weak points in the testing process. "The first thing to remember is that the new cultivars are not pure from top to bottom. A resistant root stock developed by selective breeding is grafted to a top section, Santamour said, and that doesn't necessarily assure a perfectly formed, disease-free specimen."

Other speakers discussed various municipalities and their street tree programs. Richard Boers, commissioner of forestry, Toledo, Ohio, described his program and some unique methods of recycling and distributing logs and wood chips.

Dutch Elm Disease (DED) and insect control research were updated by Charles L. Wilson, Agricultural Research Service USDA, Department of Plant Pathology, and David G. Nielsen, assistant professor of entomology, OARDC and OSU, respectively. Wilson discussed the extent to which DED has covered the country. "This disease is a lot smarter than we once thought it was, he said. It has spread from localized areas to most of the continental U.S." Control measures he is currently studying include applications of various forms of benomyl.

The Shade Tree Evaluation Project is being conducted in cooperation with various Ohio utility companies, Ohio Chapter, ISTC and the Ohio Nurseryman's Association. Each June and September, a committee representing all cooperating agencies evaluates the trees for their desirability as potential street and roadside trees.



The Shade Tree Evaluation Plot was featured in the afternoon portion of the meeting. Here people examine a few of the many varieties of new cultivars growing in the plots. Since the first planting in 1965, 140 different kinds of trees have been established in the plot. The area is "wide open" and resembles conditions found in most street tree and homeowner plantings.



Beautiful turf is no accident. Make it happen with Acti-dione® 4-season disease control

The old saying that beauty is more than skin-deep is nowhere more applicable than on a golf course. Beautiful turf will not retain its beauty unless it remains healthy. In addition to normal wear and tear from golf play and stress from variable weather conditions, fungi are an ever-present health threat to turf. There's little you can do about golf play and weather, but you can control fungal diseases. An effective, economical way to combat fungal growth all year long is to use Acti-dione® Thiram and Acti-dione TGF® in a four-season disease control program. With fungi out of the way, turf has a better chance to grow strong and healthy — to resist weed infestation, to bounce back from injury and to survive adverse weather conditions. See your TUCO distributor today for complete information and assistance in planning a four-season disease control program with Acti-dione turf fungicides.



Use Proxol* 8OSP to help prevent insect damage



Division of The Upjohn Company, Kalamazoo, Michigan 49001



Stop snow mold before it starts

Cold weather and snow cover before the ground is frozen make ideal conditions for development of snow molds. For winter disease control, apply Acti-dione Thiram in the late fall before the first snowfall and during periods of thaw.