



**Limited
Time
Offer**

FREE Vacuum Pickup Attachment when you buy a new Hesston Front Runner® GMT!

Now, when you need it most to clean up leaves and clippings, we'll give you FREE a self-contained Vacuum Pickup Attachment worth over \$500.00 when you buy any standard Front Runner Grounds Maintenance Tractor with mower.

It's the perfect time of year for a new powerful vacuum leaf pickup. And best of all, it's free when you buy the versatile Front Runner GMT.

What an unbeatable deal! A self-contained vacuum that deposits leaves and clippings into its own 20-bu. collection box as you mow. No trailer needed. And it's free . . . just when you need it most for your fall cleanup chores. The pivot dump and removable end-gate make dumping easy. An optional 15-ft. snorkel cleans hard-to-reach places.

Yes, the FREE Vacuum Attachment makes Front Runner GMT the best deal going this

fall. And up-front attachments give it year 'round versatility to mow with 48", 60" or giant 80" mowers, clear snow with the Snow Thrower, 2-Stage Snow Blower or V-Plow, handle dirt or snow with the Angle Blade. All are hydraulically controlled.

Front-wheel hydrostatic drive. One-lever speed control. Instant forward/reverse. Articulated steering for great maneuverability! Front Runner GMT is everything you expect from a 16 or 19.8 hp mower . . . and much more! And with the FREE Vacuum Offer, it's a deal you just can't beat!



Articulated steering lets you cut close around trees and next to buildings with ease.



Snow Thrower clears a 48" path directing snow to left or right. Cab is optional.

Front Runner GMT and FREE Vacuum Pickup — a powerful deal you shouldn't miss!

See your nearest participating Hesston Lawn Equipment dealer for details.

Hesston Corporation, Lawn Equipment Division
1504 Sadlier Circle S. Dr., Indianapolis, Indiana 46239 Dept. B
Phone: 317-352-0193
I want to know more about my FREE Vacuum Pickup Attachment and the all-season Front Runner GMT. Please rush the name of my Front Runner dealer.

Name _____
Company _____
Address _____ Phone _____
Town _____ State _____ Zip _____

**Ask about the new
Front Runner Turf
Truck and
Three Wheeler.**





It's summer.

**For effective control
of dollar spot and
large brown patch,
use**

TERSAN® 1991.
TURF FUNGICIDE

Sure, you want your course to look its best.

To keep it green, healthy and disease-free, spray TERSAN 1991 on tees, fairways and greens. Sprayed only every 10 to 14 days, it causes less inconvenience for players and reduces labor costs.

Used correctly, TERSAN 1991 stops dollar spot and large brown patch before they can damage your turf.

Should pythium be a problem in established turf or at overseeding, apply TERSAN SP.

With the Du Pont TERSAN 1-2-3 Program, you'll be on top of turf diseases all season long.

The TERSAN 1-2-3 Program gives you effective, economical and complete disease control. For details, contact your golf course supplier today.

**TERSAN 1•2•3
DISEASE CONTROL PROGRAM**



*With any chemical,
follow labeling instructions
and warnings carefully.*

Circle 108 on free information card

MY THREE MEN FERTILIZED 700 TREES IN A DAY AND A HALF...



"My three men fertilized 700 trees in a day and a half with Jobe's Tree Food Spikes. I couldn't believe it... so I went around and checked behind them. Sure enough, they'd fertilized all 700 trees. Beautiful," says Richard Boehm, Superintendent, Military Golf Course, Wright-Patterson Air Force Base, Dayton, Ohio.

"I want to keep my trees growing strong and beautiful. That's why I used Jobe's Tree Food Spikes. I just couldn't believe that Jobs could save so much time but we did the entire course in a day and a half," concludes Dick Boehm.

"And you can see the difference they make. Similar trees were put in on the other side of the road. Ours are greener," confirms Boehm.

Jobe's Spikes can save just as much time for you. Each spike is a premeasured amount of the right combination of plant foods for trees and shrubs. This eliminates the chance for mistakes, while saving time and money. And they've proven effective in University tests.

Order direct or from your jobber-distributor. \$30 per case (105 spikes) for 5 cases; \$25 per case for 15 cases. Shipped pre-paid.

Jobe's MAKES TREE FEEDING EASIER **TREE FOOD SPIKES**
INTERNATIONAL SPIKE, INC.,
462 EAST HIGH STREET
LEXINGTON, KENTUCKY 40508

WEEDS TREES & TURF®

August 1975, Vol. 14, No. 8

12 Repair or Replace? — When dealing with the complex world of machines, it's best to know when you've spent enough money repairing that old machine and when it's time to trade it in and purchase a new one. J. R. Watson, vice-president, Toro Co., presents guidelines for determining when the time has come to replace equipment.

14 Europeans Examine U.S. Implant System — The "lime induced chlorosis" problems experienced by many European fruit growers are being solved by the introduction of a popular U.S. brand of encapsulated iron.

16 Hydraulic Maintenance Is Back — Hydraulic systems have become so refined in the past few years that proper and regular maintenance is a must. J. L. Love, service supervisor, International Harvester, outlines a regular maintenance schedule to insure performance and longevity from a hydraulic system.

17 The Little, Big Machines — With the popularity of skid steer loaders increasing at a tremendous rate, a dozen or more manufacturers have appeared almost overnight. Even though they may all appear to be the same, there are important differences to consider when selecting the best skid steer loader for your particular needs.

26 Keeping Firestone in Championship Condition — Probably the single most important piece of maintenance equipment a golf course can own is a tractor. Peter Miller, superintendent at Firestone, explains just how valuable tractors can be in keeping a course in top-notch condition.

35 Guest Editorial — John Kinkead, National Mower Company, presents his opinions, as an equipment manufacturer and consumer, on proposed government regulations requiring additional mower safety devices, OSHA and EPA.

Editorial	6	Meeting Dates	41
Government News • Business	15	People on the Move	47
Industry News and Newsmakers ...	22	Classifieds	48
Sod Industry Section	28	Ad Index	48
Guest Editorial	35	Trimmings	49

Copyright © 1975 by The Harvest Publishing Company

Member, American Business Press,
Business Publications Audit



Single Copy Price: \$1.00 for current and all back issues. Foreign \$1.50. Subscription Rates: WEEDS TREES AND TURF is mailed free, within the U.S. and possessions and Canada, to qualified persons engaged in the vegetation care industry and related fields in controlled circulation categories. Non-qualified subscriptions in the U.S. and Canada are \$10.00 per year; other countries, \$12.00 per year. Controlled circulation postage paid at Cleveland, Ohio 44101.

THE COVER — Under Peter Miller's watchful supervision, a new green takes shape at Firestone. Tractor-drawn sod trailers bring the material right to the workers. Miller has been superintendent at Firestone Country Club for 7 years.

PUBLISHED MONTHLY BY
THE HARVEST PUBLISHING CO.
9800 Detroit Ave.
Cleveland, Ohio 44102
(216) 651-5500

HUGH CHRONISTER
PRESIDENT

ARTHUR V. EDWARDS
PUBLISHER

LEO NIST
SENIOR VICE PRESIDENT

WILLIAM CUNNINGHAM
VICE PRESIDENT, TREASURER

EDITORIAL

DONALD D. MILLER
EDITORIAL DIRECTOR

ROGER E. YOUNT
ASSOCIATE EDITOR

CIRCULATION

GILBERT HUNTER
VICE PRESIDENT CIRCULATION

DONALD D. LANGLEY
DIRECTOR OF CIRCULATION

PRODUCTION

PAUL BALTIMORE
DIRECTOR OF OPERATIONS

DARRELL GILBERT
ADVERTISING PRODUCTION MANAGER
9800 Detroit Ave.
Cleveland, Ohio 44102
(216) 651-5500

ADVERTISING

HEADQUARTERS:
9800 Detroit Ave.
Cleveland, Ohio 44102
(216) 651-5500

JEAN NEUENDORF
EXECUTIVE ASSISTANT

DOROTHY LOWE
CLASSIFIED ADVERTISING MANAGER

RICHARD H. SWANK
REGIONAL MANAGER
9800 Detroit Ave.
Cleveland, Ohio 44102
(216) 651-5500

RUSSELL B. BANDY
REGIONAL MANAGER
757 Third Avenue
New York, N.Y. 10017
(212) 421-1350

Editorial

We congratulate the American Sod Producers Association (ASPA) for their campaign to build membership. At the just completed national meeting in Kansas City, ASPA announced a new total of 300 members which approaches 30% of the cultivated sod growers.

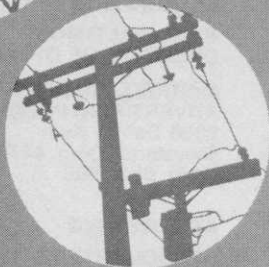
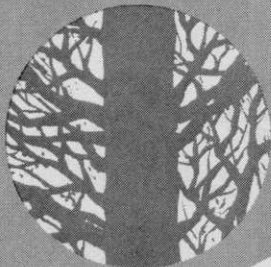
Many activities account for the success of this group which was first formally organized in 1967, but we believe one of their later innovations for gaining members — the key man idea — has helped greatly. Gerry Brouwer, grower and manufacturer of Keswick, Ontario, Canada, an outgoing board member, has most recently served as membership chairman. At the Kansas City session, he introduced most of the 31 key men organized by the ASPA to sign up new members. A "key man" is recruited for each sod producing state and given the assignment to contact his fellow state growers.

Naturally, to make membership worthwhile, an association or society, or foundation, has to offer a program of value to the member. Basically, regardless of the industry, the program needs are

about the same. They must offer a strong professional base. Technical industry information based on new techniques is foremost. How these are presented may vary from formal educational sessions to newsletters to field demonstrations and many others.

But these are the base which pay dividends to the members. In the case of the ASPA — and we use this example because their program and growth has been typical — members and non-member growers in numbers — were attracted by field demonstrations which brought together the special mechanical equipment needed to harvest sod. The ASPA also brought together those turfgrass researchers and teachers who provided the technical data necessary for successful cultivated sod production and marketing. They offered information from both university and industry. Coupled with legislative activities and the normal informal member to member exchange of ideas, the association made itself invaluable to the individual grower. The mystery is why any

(Continued on page 48)



TOUGH RUGGED HARDWARE for TOUGH RUGGED HARDWOOD

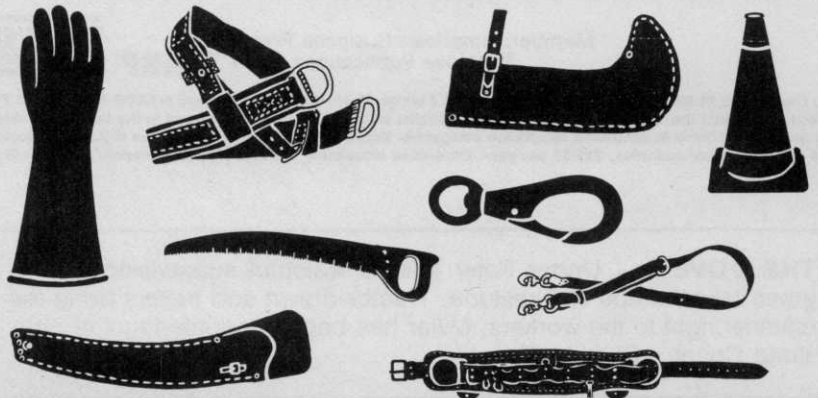
Durability in hardware and confidence in tested products are top priorities for you and the linemen you equip.

Safety Test, Inc., manufacturers and distributors of tree trimming and lineman's equipment, has the tools and accessories that your men have confidence in . . . safety tested products of proven durability. Tough tools! Sturdy, practical accessories! Everything they need for a good job done fast. In anybody's book, that saves money!

WRITE OR CALL SAFETY TEST FOR YOUR FREE CATALOGUE.

SAFETY TEST, INC.

Manufacturers of
WOOD/CHUCK Chipper.
Drawer 400-A, Shelby, N.C. 28150
(704) 432-7346





Ford 4110 LCG with 917 Flail Mower

Ford makes the PGA cut

Year after year, Ford mows for the pro's. At Firestone Country Club, and at championship fairways coast to coast, Ford tractor-mowers perform beautifully. Cutting smoothly. Evenly. Helping to groom rugged courses for top events like the 1975 PGA Tournament.

Now you can get similar results on your own lawn, regardless of its size. With a Ford lawn and garden

tractor that lets you ride in comfort on a deep-padded seat. Or a Ford riding mower that tilts on end for space-saving storage. Or a Ford walk-behind mower featuring remarkable Air Action that stands grass up for even mowing.

Help give your grounds that greenskeeper's touch. See all the better ideas from Ford. Including garden tillers and chain saws. At your Ford Tractor lawn and

garden equipment dealer. Look for him in the Yellow Pages under "Lawn Mowers."

Ford-for the long run

FORD TRACTORS



Ford lawn and garden tractor



Ford riding mower



Ford walk-behind mower





Trees and Glade Go Together

A new natural team, Glade Kentucky bluegrass and trees! Glade performs well in moderate shade, especially when mixed with fine fescues. A selection from Rutgers University (tested as P-29), Glade is an improved, low-growing, medium to dark green grass with fine leaf texture and thick, rapid-growing rhizome and root system. Glade has good resistance to important turfgrass diseases including powdery mildew.

Like boys and trees, Glade and shade go together. Mixed with other elite bluegrasses and fine fescues in moderate shade, Glade is a natural.

Get new Glade at local wholesale seed distributors.

Another fine product of Jacklin Seed Company

Glade
Glade

KENTUCKY BLUEGRASS

U. S. Plant Patent 3151

For ad on following page Circle 104 on free information card ▶

Kohler

Quiet plus engines.

Designed to make equipment quieter.

Kohler introduces a full line of "Quiet-plus" engines, both one- and two-cylinder models. Soft-spoken, air-cooled, cast iron engines that deliver big Kohler performance *plus* a dramatic noise reduction system... efficient mufflers, quiet-breathing carburetors, shrouded cooling. And designed to run hard and cool within a *closed* engine compartment—requiring only one intake and one exhaust duct. All of which results in a substantial reduction in dbA*

Until now there was nothing but a lot of noise about noise. Now there are "Quiet-plus" engines. Only from Kohler.

... no wonder 7 out of 10 major manufacturers of garden tractors specify Kohler 4-cycle engines.

KOHLER CO., KOHLER, WI 53044

*Test data available on request.



**When
they're
here...**

**they
sound like
they're
here!**



KOHLER

Pennfine Perennial Ryegrass.

If it's got a weakness, nobody's found it. But we have heard about some new strengths.

The Pennfine story gets better as it goes along.

Four years ago, the agronomists at Pennsylvania State University finished their work on Pennfine. And the professional turf community put this remarkable fine-leaved perennial ryegrass to work on golf courses, athletic fields, sod farms, parks, cemeteries and public grounds across the country.



Clean-cutting Pennfine

Other fine-leaved ryegrasses

The ultimate test.

Now, after thousands of grounds maintenance pros have used Pennfine, nobody's reported a real weakness. All the characteristics the Penn State agronomists

selected for—unsurpassed mowability, excellent disease resistance, exceptional decumbency, persistence under diverse management conditions, fine texture and compatibility with Kentucky Bluegrass—have proven out in the real world. That's the ultimate test.



Dr. Joe Duich of Penn State inspecting a new application for Pennfine: Independence National Historical Park, Philadelphia.

In fact, Pennfine has performed even better in some areas than anticipated. It's proven to be more tolerant to both shade and heat. It's shown excellent rust resistance on the West Coast. And, although Pennfine showed good to excellent disease tolerance in university trials, its disease tolerance appears to be even stronger in actual use.



Pennfine production fields in the Pacific Northwest where a major effort is underway to meet growing demand for seed.

Increased production.

From the very beginning, there's been only one problem with Pennfine: not enough seed to meet demand. And that problem is just about solved with substantially increased production. We can't make you a flat promise. But, if you order fairly soon, you should be able to get Pennfine seed in the quantity you want.

On the other hand, maybe you're still not convinced. In that case, we'll send you a test kit with enough Pennfine seed for you to develop a 100 sq. ft. test plot. And you can try to find a weakness on your own turf.

Either way, whether you seed Pennfine this year or just test it, we think you'll be impressed by the results.

Let me know how I can order Pennfine Perennial Ryegrass.

I'm still not convinced. Send me a Pennfine Test Kit.

Name _____

Title _____

Club or Company _____

Address _____

City _____ State _____ Zip _____

Please Note: The test kit offer is restricted to turf professionals, people whose livelihood depends on the establishment and maintenance of quality turf.

Mail to: Pennfine Perennial Ryegrass, P.O. Box 923, Minneapolis, Mn 55440.



WTT-8