

Champion Brass Mfg.  
Greenlawn Sprinkler Co.  
W. L. Hamilton Co.  
Hays Mfg. Div., Zurn Industries  
Melnor, Turf Irrigation Div.  
Moody Sprinkler Co., Inc.  
L. R. Nelson Mfg. Co., Inc.  
RainBird Sprinkler Mfg. Corp.  
Rain-O-Mat Sprinklers, Inc.  
Toro Irrigation Division  
Weather-matic Div., Telsco Ind.

**IRRIGATION VALVES, FLOW CONTROL**

Griswold Controls  
Moody Sprinkler Co., Inc.  
Toro Irrigation Division

**IRRIGATION VALVES, MANUAL**

Greenlawn Sprinkler Co.

**IRRIGATION VALVES,  
PRESSURE ACTIVATED**

Griswold Controls  
W. L. Hamilton Co.  
Moody Sprinkler Co., Inc.  
RainBird Sprinkler Mfg. Corp.  
Toro Irrigation Division

**IRRIGATION, QUICK  
COUPLING VALVES**

Buckner/Johns Manville  
Melnor, Turf Irrigation Div.  
Moody Sprinkler Co., Inc.  
L. R. Nelson Mfg. Co., Inc.  
RainBird Sprinkler Mfg. Corp.  
Rain-O-Mat Sprinklers, Inc.  
Sprinkler Irrigation Supply Co.  
Toro Irrigation Division  
Weather-matic Div., Telsco Ind.  
H. N. Webster Mfg.

**IRRIGATION VALVES, SOLENOID**

Griswold Controls  
Hays Mfg. Div., Zurn Industries, Inc.  
Melnor, Turf Irrigation Div.  
Moody Sprinkler Co., Inc.  
RainBird Sprinkler Mfg. Corp.  
Toro Irrigation Division

**KNIVES, INJECTOR**

Contree Sales, Inc.

**LANDSCAPING, STUDY COURSES**

Lifetime Career Schools

**LEAF BLOWERS**

Billy Goat Industries, Inc.  
Finn Equipment Co.  
Gravelly Corp., Div. Clarke-Gravelly Corp.  
Mid-State Metal Casters & Mfg. Co.  
F. E. Myers & Bro. Co.  
Papec Machine Co.  
Parker Sweeper Co.  
Solo Motors, Inc.  
The Vandermolen Co.

**LEVELERS**

(Also See Blades, Dozer Scrapers)

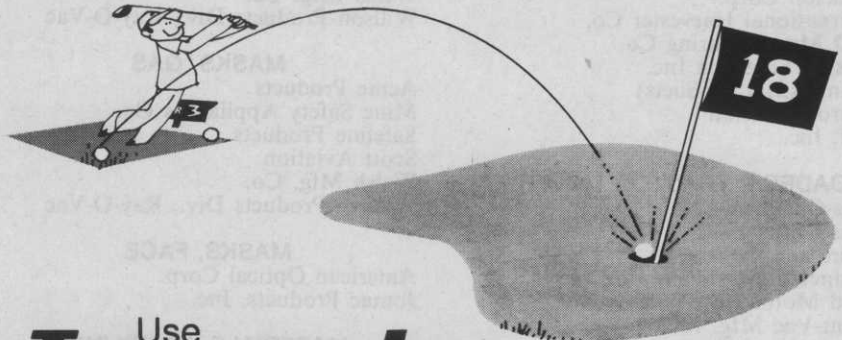
Arps Corporation  
Austin Products, Inc.  
Brillion Iron Works, Inc.  
Deere & Co.  
DriAll Drier's Inc.  
Eversman Mfg. Co.  
FMC Corp., Side-Winder  
International Harvester Co.

**LITTER RECEPTACLES**

Bemis Mfg. Co.  
Friend Mfg. Corp.

Control your fungi problems

**FROM TEE TO GREEN**



Use **Terrazole**<sup>®</sup>

To Fight Cottony Blight, Grease Spot, Damping-Off

Terrazole soil fungicide is your best weapon against Pythium fungi—the cause of grease spot, damping-off and cottony blight in your turf.

With a case of Terrazole in your storage shed, you're set to act fast at the first sign of these turf diseases. Terrazole goes to work quickly and provides effective control of the problems caused by both Pythium and Phytophthora. Repeating at 5 to 10-day intervals provides preventive control. Keep your best weapon against Pythium on hand. Keep your greens green, your golfers happy.

Use **Terraclor**<sup>®</sup>

To Control Brown Patch

Terraclor soil fungicide is the answer to Rhizoctonia control—the fungus that contributes to the formation of Brown Patch in Southern turf grasses.

Terraclor is easy to apply in liquid or dry granular form. Usually one application at the first sign of disease is all it takes.

Be sure you have Terraclor on hand. It's good assurance for healthy fairways and greens.

**Write for complete information.**

Mr. D. H. Sparks, Agricultural Division OLIN, **The rare bird in the business**  
P. O. Box 991, Little Rock, Arkansas 72203

Please send me more information on  
Terrazole/Terraclor for a healthy turf.



Name \_\_\_\_\_

Address \_\_\_\_\_

City \_\_\_\_\_

State \_\_\_\_\_ Zip \_\_\_\_\_

### LOADERS, BOOM

Century Engineering Corp.  
Deere & Co.  
Dico Co., Inc.  
Howard Rotavator Co., Inc.  
Pitman Mfg. Co.  
Waldon, Inc.

### LOADER, SKID STEER

Clark Equipment Co.  
Davis Mfg.  
Deere and Co.  
Erickson Corp.  
International Harvester Co.  
K-D Manufacturing Co.  
Massey Ferguson Inc.  
(Industrial Products)  
Melroe Division  
TCI, Inc.

### LOADERS, TRACTOR MOUNTED

Allis-Chalmers  
Arps Corp.  
Deere and Co.  
Engineering Products Co.  
Ford Motor Co., Tractor Div.  
Giant-Vac Mfg. Inc.  
International Harvester Co.  
Johnson Hydraulic Equip. Co.,  
Div. Arps Corp.  
Massey-Ferguson, Inc.  
Melroe Mfg. Co.  
Schwartz Mfg. Co.  
The Sun-Mastr Corp.  
Vermeer Manufacturing Co.

### LOG SPLITTERS

Lupton Tree Service  
Olathe Mfg., Inc.

Piqua Engineering, Inc.  
Vermeer Mfg. Co.

### MARKERS, LINE

Fox Valley Marking Systems

### MASKS, DUST

Acme Products  
American Optical Co.  
Friend Mfg. Corp.  
Martindale Electric Co.  
Mine Safety Appliances Co.  
Welsh Mfg. Co.  
Willson Products Div., Ray-O-Vac

### MASKS, GAS

Acme Products  
Mine Safety Appliances Co.  
Safeline Products  
Scott Aviation  
Welsh Mfg. Co.  
Willson Products Div., Ray-O-Vac

### MASKS, FACE

American Optical Corp.  
Jomac Products, Inc.

### MATERIALS, HANDLING

B.A.G. Corp.  
Bemis Mfg. Co.

### MEASURING WHEEL

Gandy Co.

### MISTBLOWERS, BACKPACK

Buffalo Turbine Ag. Equip. Co.  
Curtis Dyna Products Corporation  
Echo Chain Saw Div., Kioritz Corp.  
of America

Friends Mfg. Corp.  
H. D. Hudson Mfg. Co.  
Robco, Inc.  
Solo Motors, Inc.  
Stihl American, Inc.  
Tradewinds, Inc.  
Vandermolen Corp.

### MISTBLOWERS, ELECTRIC

Root-Lowell Corp.

### MISTBLOWERS, SELF-PROPELLED

Century Engineering Corp.  
Solo Motors, Inc.  
Tradewinds, Inc.

### MISTBLOWERS, TRUCK-MOUNTED

The Broyhill Co.  
Buffalo Turbine Ag. Equip. Co.  
FMC Corp., Ag. Machinery Div.  
Finn Equipment Co.  
F. E. Myers & Bro. Co.  
Solo Motors, Inc.  
Vandermolen Corp.

### MISTBLOWERS, NOZZLE PARTS

The Broyhill Co.  
Buffalo Turbine Equipment Co.  
Century Engineering Corp.  
Delevan Mfg. Co.  
Echo Chain Saw Div., Kioritz Corp.  
of America  
FMC Corp., Ag. Machinery Div.  
H. D. Hudson Mfg. Co.  
F. E. Myers & Bro. Co.  
Solo Motors, Inc.  
Spraying Systems Co.

### MOISTURE METERS

AgTronics Mfg. Co.  
Howard S. Crane, Inc.  
Harbor Industries, Inc.  
Irrrometer Company  
JLM Products & Design  
Soilmoisture Equipment Corp.  
Turf Service Laboratory, Inc.

### MOWERS, FLAIL

BMB Company  
Brillion Iron Works, Inc.  
E. L. Caldwell & Sons, Inc.  
Deere and Co.  
Excel Industries, Inc.  
FMC Corp., Ag. Machinery Div.  
FMC Side-Winder  
Ford Motor Co., Tractor Div.  
Friend Mfg. Corp.  
Gravely Corp., Div. Clarke-Gravely  
Corp.  
International Harvester Co.  
Kinco Mfg.  
Lakes Supply Co., Inc.  
Massey-Ferguson, Inc.  
Mathews Company  
Mott Corporation  
Slope Tractor, Inc.  
Sun-Master, Corp.  
Terrain King Corp.

### MOWERS, GREENS

Cooper Mfg. Co.  
Hahn, Inc.  
Jacobsen Mfg. Co.  
National Mower Co.  
The Toro Company

### MOWERS, REEL

Bunton Company  
Cooper Mfg. Co.  
Engineering Products Co.  
Friend Mfg. Corp.  
Hahn, Inc.

## 360 Degrees of Quality

Covering your entire irrigation needs.

### Systems:

White Turf designs maximum performance irrigation systems featuring durability and low maintenance.

### Installation:

Special techniques and equipment enable White Turf to install your system with a minimum of turf damage.

### Distribution:

Efficient handling methods of quality equipment provides you with the best irrigation service available.



## White Turf Engineering

5 SUMMER DRIVE, WINCHENDON, MASSACHUSETTS 01475 PHONE 617-297-0941

Jacobsen Mfg. Co.  
Locke Mfg. Div. Stellar Lawn Care  
McDonough Power Equipment, Inc.  
National Mower Co.  
Roseman Mower Corp.  
Simplicity Mfg. Co.  
The Sun-Master Corp.  
The Toro Company  
Year-A-Round Cab Corp., Jari Div.

#### MOWERS, ROTARY

AMF Western Tool Division  
Allis-Chalmers  
Ariens Company  
Austin Products, Inc.  
Avco Ezee Flow Div.  
BMB Company  
The Black & Decker Mfg. Co.  
Brillion Iron Works, Inc.  
Bachtold Bros.  
Bunton Co.  
E. L. Caldwell & Sons, Inc.  
J. I. Case Co., Outdoor Power  
Equip. Div.  
Conaway, Inc.  
Deere and Co.  
Economy Tractor  
Engineering Products Co.  
Excel Industries, Inc.  
FMC Corp., Ag. Machinery Div.  
FMC Corp., Outdoor Power Equip.  
Division  
FMC Corp., Side-Winder  
Flymo Division, Keltec, Inc.  
Ford Motor Co., Tractor Div.  
Friend Mfg. Corp.  
Goodall Div.  
Gravelly Corp., Div. Clarke-Gravelly  
Hesston Corporation, Ind. Div.  
Hydro Turf  
International Harvester Co.  
Jacobsen Mfg. Co.  
Lawn-Boy, OMC-Lincoln  
Lehara Equipment Co., Inc.  
Locke Mfg. Div. Stellar Lawn Care  
MTD Products, Inc.  
Massey-Ferguson, Inc.  
McDonough Power Equipment, Inc.  
Roof Mfg.  
Ryan, OMC-Lincoln  
M. J. Scott Co.  
Simplicity Mfg. Co.  
Slope Tractor, Inc.  
Solo Motors, Inc.  
Speedex Tractor Co.  
The Sun-Master Corp.  
Terrain King Corp.  
The Toro Company  
Triumph Machinery Co.  
Vicon Farm Machinery, Inc.  
Wheel-Horse Products  
Wisconsin Marine, Inc.  
Wood Brothers, Inc.  
Yazoo Mfg. Co.  
Year-A-Round Cab Corp., Jari Div.

#### MOWERS, SICKLE BAR

Allis-Chalmers  
BMB Co., Inc.  
Deere and Co.  
Ford Tractor Operations, North  
America  
Friend Mfg. Corp.  
International Harvester Co.  
Jacobsen Mfg. Co.  
Kinco Mfg.  
Massey-Ferguson, Inc.  
Simplicity Mfg. Co.  
Slope Tractor, Inc.  
Solo Motors, Inc.  
Thomas Equipment Ltd.  
Triumph Machinery Co.

Wheel Horse Products  
Year-A-Round Cab Corp. (Jari Div.)

#### MOWERS, VERTICAL (Also See Thatcher)

Artic Mizer Manufacturers, Inc.  
BlueBird International, Inc.  
Deere and Co.  
E-Z Rake, Inc.  
Giant-Vac Mfg., Inc.  
Hahn, Inc.  
International Harvester Co.  
Jacobsen Mfg. Co.  
F. D. Kees Mfg. Co.  
Kinco Mfg.  
Parker Sweeper Co.  
Ryan, OMC-Lincoln  
Terrain King Corp.  
Triumph Machinery Co.

#### MOWERS, REPLACEMENT PARTS

Allis-Chalmers  
Ariens Company  
Austin Products, Inc.  
Deere and Co.  
FMC Corp., Side-Winder  
Flymo Div., Keltec Inc.  
Ford Motor Co., Tractor Div.  
Goodall Div.  
Hesston Corp.  
International Harvester Co.  
Jacobsen Mfg. Co.  
Lakeshore Equipment & Supply Co.  
Locke Mfg. Co., Inc.  
Massey-Ferguson  
Roof Manufacturing Co.  
Ryan, OMC-Lincoln  
Slope Tractor, Inc.  
The Sun-Master Corp.  
Terrain King Corp.  
The Toro Company  
Wheel Horse Products  
Wood Brothers, Inc.  
Yazoo Mfg. Co., Inc.  
Year-A-Round Cab Corp. (Jari Div.)

#### MULCH BLOWERS

Bowie Industries, Inc.  
Finn Equipment Co.  
Reinco

#### NOZZLES (See Spray Nozzles)

#### OIL STORAGE

Contree Sales, Inc.

#### PAINT, MARKING

Fox Valley Marking Systems

#### PARK EQUIPMENT

Game Time, Inc.

#### PIPE

#### (See Irrigation Pipe)

Alcoa Aluminum Co. of America  
Amoco Chemicals Corp.  
Cast Iron Pipe Res. Assoc.  
Cresline Plastic Pipe Co., Inc.  
The Flintkote Co., Pipe  
Products Div.  
Hydro-Turf  
Ridge Plastics Co.

#### PIPE FITTINGS

Amoco Chemicals Corp.  
Certain-Teed Products Corp.  
Cresline Plastic Pipe Co., Inc.  
Melnor Ind., Turf Div.  
L. R. Nelson Corp.  
Plastiline, Inc.  
R & G Sloane Mfg. Co.

**PLAYGROUND EQUIPMENT**  
Game Time, Inc.

**PLOWS, VIBRATORY**  
Charles Machine Works, Inc.  
Jacobsen Manufacturing Co.  
Vermeer Mfg. Co.

**POST HOLE DIGGER**  
Austin Products, Inc.  
Hoffco, Inc.  
Fred A. Lewis Company  
Solo Motors, Inc.  
Stone Construction Equip., Inc.  
Village Blacksmith  
Vogel Tool & Die Corp.

**PROPORTIONING SYSTEMS**  
Contree Sales, Inc.  
Vineland Laboratories, Inc.

**PROTECTIVE CLOTHING**  
American Optical Co.  
Friend Mfg. Corp.  
Jomac Products, Inc.  
Mine Safety Appliances Co.

**PRUNERS**  
American Arborist Supplies  
Asplundh Chipper Co.  
Bartlett Mfg. Co.  
Corona Clipper Co.  
Fairmont Hydraulics  
Fanno Saw Works  
Friend Mfg. Co.  
Jameson Corporation  
Karl Kuemmerling, Inc.  
Limb-Lopper Co., Inc.  
Pitman Mfg. Co.  
H. K. Porter, Inc.  
Rowco Mfg. Co., Inc.  
Safety Test & Equipment Co.  
Seymour Smith & Son, Inc.  
Stanley Hydraulic Tools, Div.  
The Stanley Works  
Stihl American, Inc.  
Village Blacksmith



**Agway bags it!**

**NITROFORM\***  
organic nitrogen



The long-lasting, slow-release organic nitrogen that keeps feeding turf for months. Try it.

**Turf and Horticultural Products, Synthetics Dept.**  
Wilmington, Delaware 19899

\* Registered trademark of Hercules Incorporated. STH74-2

For More Details Circle (140) on Reply Card.

## PUMPS

(Also See Sprayers, Complete Power Unit)

Ace Pump Corp.  
Aurora Pump  
Berkley Pump Company  
John Blue Co.  
Bowie Industries, Inc.  
The Broyhill Co.  
Century Engineering Corp.  
Contree Sales, Inc.  
Delavan Manufacturing Corp.  
Energy Mfg. Co.  
FMC Corp., Ag. Machinery Div.  
Friend Manufacturing Corp.  
H. D. Hudson Mfg. Co.  
Hydraulic Products Co., Inc.  
Hydro Turf  
Hypro, Inc.  
ITT Marlow  
Larson Machine, Inc.  
F. E. Myers & Bro. Co.  
Oberdorfer Pump Div.  
Robco, Inc.  
Root-Lowell Corp.  
Solo Motors, Inc.  
Universal Motor Co.  
Venable Sprinkler Sales, Inc.  
Viking Pump Company

## PUMPS, CENTRIFUGAL

Ace Pump Corp.  
Aurora Pump  
Berkley Pump Company  
L. L. Larson Machine, Inc.  
Oberdorfer Foundries Inc.,  
Agri. Pump Div.  
Universal Motor Div., Medalist Ind.

## PUMPS, DIAPHRAGM

Ace Pump Corp.

## PUMPS, PISTON

L. L. Larson Machine, Inc.  
Robco, Inc.

## PUMPS, ROLLER

L. L. Larson Machine, Inc.

## PUMPS, SUBMERSIBLE

Hydraulic Products Co., Inc.  
ITT Marlow  
Stanley Hydraulic Tools, Div.  
The Stanley Works

## PUMPS, TURBINE

Aurora Pump  
Hydraulic Products Co., Inc.

## RAKES, LANDSCAPING

Arps Corporation  
Austin Products, Inc.  
Brillion Iron Works, Inc.  
Deere and Co.  
E-Z Rake, Inc.  
Ford Motor Co.  
International Harvester Co.  
Roseman Mower Corporation  
Triumph Machinery Co.  
York Modern Corp.

## RAKES, ALL PURPOSE

Arps Corp.  
Asplundh Chipper Co.  
Austin Products, Inc.  
Bartlett Mfg. Co.  
BlueBird International, Inc.  
Brillion Iron Works, Inc.  
Coursigns, Inc.  
Deere and Co.  
Ford Motor Co., Tractor Div.  
International Harvester Co.  
F. D. Kees Mfg. Co.  
Lely Corp.  
Roseman Mower Co.  
Ryan, OMC-Lincoln  
Skaggs Turf Equipment Co.  
Smithco, Inc.  
The Toro Company  
Vicon Farm Machinery, Inc.  
Year-A-Round Cab Corp., Jari Div.  
York Modern Corp.

## REELS, HOSE

American Hose & Reel Co.  
FMC Corp., Ag. Machinery Div.  
Friend Mfg. Corp.  
Clifford B. Hannay & Son, Inc.  
H. D. Hudson Mfg. Co.  
F. E. Myers & Bro. Co.

## RESPIRATORS

Acme Products  
American Optical Co.  
Friend Mfg. Co.  
Glendale Optical Co., Inc.  
Martindale Electric Co.  
Mine Safety Appliances Co.  
Safeline Products  
Scott Aviation  
The Vandermolen Co.  
Welsh Mfg. Co.  
Willson Products Div., Ray-O-Vac

## ROCK PICKERS

(Also See Stone Pickers)

Armor Metal Products  
William Bergman Company  
Bridgeport Imple. Works, Inc.

## ROLLERS, TURF

Brillion Iron Works, Inc.  
Erie Go Mfg., Inc.  
Ford Motor Co., Tractor Div.  
Hadfield Sod Roller Co.  
International Harvester Co.  
Lakes Supply Co., Inc.  
Rosco Manufacturing Co.  
Ryan, OMC-Lincoln  
Simplicity Mfg. Co.  
Wheel-Horse Products

## ROOT-FEEDING RODS

Ross Daniels, Inc.  
H. D. Hudson Mfg. Co.  
Hydroponic Chemical Co., Inc.

## ROOT PRUNERS

Schutt's Equipment Co.

## SAFETY BELTS AND SADDLES, TREE CLIMBERS

American Arborist Supplies  
Asplundh Chipper Co.  
Bartlett Mfg. Co.  
Karl Kuemmerling, Inc.  
Mine Safety Appliances Co.  
Product Development International

## SAFETY EQUIPMENT

American Optical Co.  
Asplundh Chipper Co.  
Bartlett Mfg. Co.  
FMC Corp., Ag. Machinery Div.  
Friend Mfg. Corp.  
General Scientific Equip. Co.  
Glendale Optical Co.  
Jomac Products, Inc.  
Karl Kuemmerling, Inc.  
Martindale Electric Co.  
Mine Safety Appliances Co.  
Product Development International  
Safeline Products  
Scott Aviation  
The Vandermolen Co.  
Welsh Mfg. Co.  
Willson Products Div., Ray-O-Vac

## SAWS, MANUAL

Bartlett Mfg. Co.  
Corona Clipper Co.  
The Fanno Saw Works  
Friend Mfg. Corp.  
Karl Kuemmerling, Inc.  
Seymour Smith & Son, Inc.

## SAWS, CHAIN, ELECTRIC

Beard-Poulan Div., Emerson  
Electric Co.  
Campbell-Hausfeld Co.  
Conaway, Inc.  
DESA Industries, Inc.  
Stihl American, Inc.  
Village Blacksmith

## SAWS, CHAIN, GASOLINE

Allis-Chalmers Corp., Outdoor and  
Leisure Products  
Beard-Poulan Div., Emerson  
Electric Co.  
Campbell-Hausfeld Co.  
Conaway, Inc.  
Deere & Co.  
DESA Industries, Inc.  
Echo Chain Saw Div., Kioritz Corp.  
of America  
Ford Tractor Operations,  
North America  
Friend Mfg. Corp.  
Hoffco, Inc.  
Homelite  
Husqvarna, Inc.  
Jobu Chain Saws  
Landcaster Pump & Mfg. Co., Inc.  
Lombard Power Equipment  
McCulloch Corp.  
Omark Industries, Inc., Oregon  
Saw Chain Div.  
Partner Industries of America  
Pioneer, OMC-Lincoln  
Quadra Mfg. Ltd.  
Roper Corporation  
Skil Corporation  
Solo Motors, Inc.



Lakeshore bags it!

**NITROFORM\***  
organic nitrogen



The slow-release nitrogen that helps turf keep its good looks without repeated fertilizing. Use it to save labor.

Turf and Horticultural Products, Synthetics Dept.  
Wilmington, Delaware 19899

Registered trademark of Hercules Incorporated. STH74-9

For More Details Circle (141) on Reply Card.

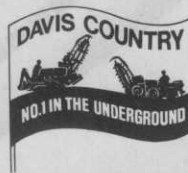
# New Davis Fleetline® 10+2

**A low-cost trencher with Davis quality that's easy to move on the job and that trenches by itself without manhandling!**

The new Fleetline 10+2 is the first new design in a compact 2-wheel drive trencher in over a decade! It gives you superior quality that you've come to expect from Davis. Its 10 hp Kohler air-cooled engine is forward so its weight keeps the digging boom in the ground—even in tough digging! No manhandling. The four-speed transaxle delivers equal torque to both wheels for straight trenches, and lets you select just the right digging speed for the soil conditions. The rigid guide wheel gives you superior control, so once the course is set, the incomparable Fleetline 10+2 digs by itself—no jostling

you around! Controls are grouped together at the rear so you needn't roam around the machine to take command. It digs from 4" wide, 36" deep to 8" wide, 24" deep at speeds up to 10 fpm. It's narrow enough to go through standard yard gates, so it's perfect for work in congested areas, low-cost house drops, and utility lines. Notice how easy it tracks in transport. That's because the differential axle lets you steer without unlocking a hub! So see your Davis trencher dealer or write Davis Manufacturing for a little relief on your small trenching jobs!

**Davis Manufacturing**  
Division of J I Case  
A Tenneco Company  
P.O. Box 1801  
Wichita, Kansas 67201



FL10-2-574



The Fleetline 10+2 slips through yard gates to work in congested areas.

Low profile lets you see the trench, boom and auger from the rear, where you have total command of the machine.



*doing something about it.*

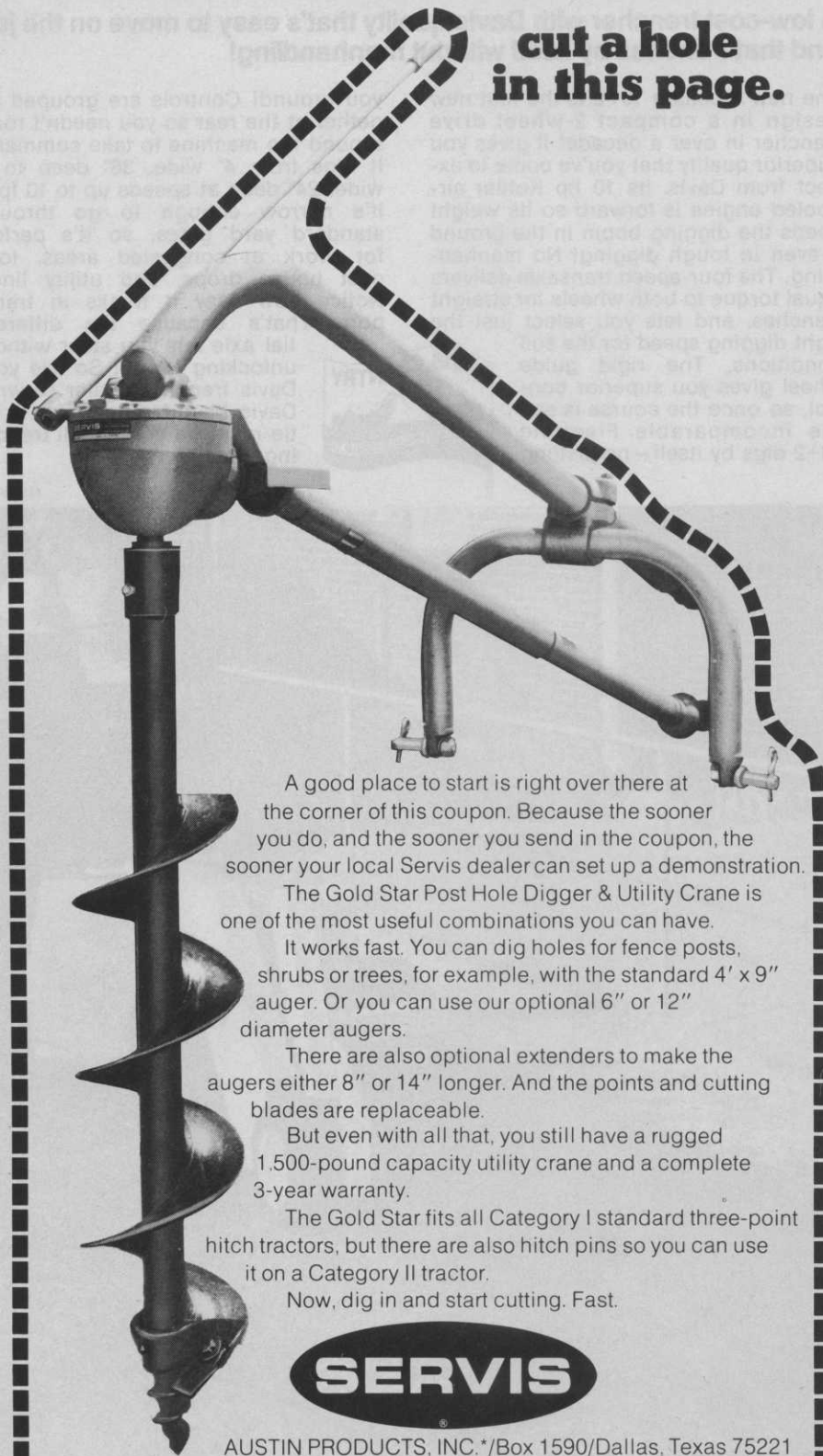
TM

# DAVIS®

For More Details Circle (127) on Reply Card

**To find out how good  
our Gold Star Digger really is,**

**cut a hole  
in this page.**



A good place to start is right over there at the corner of this coupon. Because the sooner you do, and the sooner you send in the coupon, the sooner your local Servis dealer can set up a demonstration.

The Gold Star Post Hole Digger & Utility Crane is one of the most useful combinations you can have.

It works fast. You can dig holes for fence posts, shrubs or trees, for example, with the standard 4' x 9" auger. Or you can use our optional 6" or 12" diameter augers.

There are also optional extenders to make the augers either 8" or 14" longer. And the points and cutting blades are replaceable.

But even with all that, you still have a rugged 1,500-pound capacity utility crane and a complete 3-year warranty.

The Gold Star fits all Category I standard three-point hitch tractors, but there are also hitch pins so you can use it on a Category II tractor.

Now, dig in and start cutting. Fast.



AUSTIN PRODUCTS, INC.\*/Box 1590/Dallas, Texas 75221

Name \_\_\_\_\_ Student? \_\_\_\_\_  
 Address \_\_\_\_\_  
 City \_\_\_\_\_ State \_\_\_\_\_ Zip \_\_\_\_\_

\*Formerly Servis Equipment Company

WT-9

- Stihl American, Inc.  
Waco Industries, Inc.
- SAWS, CHAIN, HYDRAULIC**  
Fairmont Hydraulics  
Friend Mfg. Corp.  
Limb Lopper Co., Inc.  
Stanley Hydraulic Tools, Div. The Stanley Works
- SAWS, CHAIN, PNEUMATIC**  
DESA Industries, Inc.  
Limb-Lopper Co., Inc.
- SAWS, CIRCULAR, GASOLINE**  
Skil Corporation  
Stihl American, Inc.
- SAWS, CIRCULAR, HYDRAULIC**  
Fairmont Hydraulics  
Limb Lopper Co., Inc.  
Stanley Hydraulic Tools, Div. The Stanley Works
- SAWS, CIRCULAR, PNEUMATIC**  
Limb Lopper Co., Inc.  
Stanley Hydraulic Tools, Div. The Stanley Works
- SAWS, CIRCULAR, ELECTRIC**  
Allis-Chalmers Corp., Outdoor and Leisure Products  
The Black & Decker Mfg. Co.  
Friend Mfg. Corp.  
Skil Corporation
- SAWS, CHAIN, PARTS**  
Beaird-Poulan Div., Emerson Electric Co.  
Campbell-Hausfeld Co.  
Grandberg Industries  
McCulloch Corporation  
Omark Industries, Inc., Oregon Saw Chain Div.  
Pioneer, OMC-Lincoln  
Sabre Saw Chain  
Skil Corporation  
Stihl American, Inc.  
Waco Industries, Inc.
- SAWS, EARTH**  
Charles Machine Works, Inc.
- SCAFFOLDS**  
Up-Right Scaffolds
- SCABBARDS, SAW**  
Bartlett Mfg. Company  
Tallman Equip. Co., Inc.  
Veri Products
- SCRAPERS**  
Austin Products, Inc.  
BMB Company  
Deere & Co.  
Eversman Mfg. Co.  
International Harvester Co.  
Massey-Ferguson, Inc. (Industrial Products)
- SCREENERS, SOIL**  
Lindig Mfg. Corp.  
Royer Foundry & Machine Co.
- SCYTHES**  
Echo Chain Saw Div., Kioritz Corp. of America  
Hoffco, Inc.
- SEEDERS, BELT TYPE**  
FMC Corp., Ag. Machinery Div.

### SEEDERS, DISC-TYPE

Brillion Iron Works, Inc.  
International Harvester Co.  
The Toro Company  
Vandermolen Export Co.

### SEEDERS, HOPPER-TYPE

Avco Ezee Flow Div.  
Brillion Iron Works, Inc.  
Cyclone Seeder Co., Inc.  
Deere & Co.  
Engineering Product Co.  
Gandy Co.  
Herd Seeder Co., Inc.  
Hydro-Turf  
International Harvester Co.  
Jacobsen Mfg. Co.  
Lakes Supply Co., Inc.  
L. L. Larson Machine, Inc.  
Lawn Medic, Inc.  
Lely Corporation  
Parker Sweeper Co.  
Vandermolen Corp.

### SEEDERS, HYDRAULIC

Bowie Industries  
Finn Equipment Co.  
Hydro Turf  
Reinco, Inc.  
Spray Baby  
The Toro Company

### SEEDERS, MOUNTED

Garber Seeders, Inc.

### SEEDERS, PULL-TYPE

Garber Seeders, Inc.

### SEEDERS, SOD

Brillion Iron Works, Inc.  
Cyclone Seeder Co., Inc.

### SHARPENER, CHAIN SAW

Foley Mfg. Co.  
Granberg Industries

### SHARPENER, MOWERS & CUTTERS

Foley Mfg. Co.  
Travelrain Power Sprinkler Co.

### SHEARS

Bartlett Mfg. Co.  
Black & Decker  
Corona Clipper Co.  
Friend Mfg. Co.  
Melnor Industries, Inc.  
H. K. Porter, Inc.

Seymour Smith & Son, Inc.  
Tallman Equipment Co., Inc.

### SHREDDERS (Also See Chippers)

Billy Goat  
E. L. Caldwell & Sons, Inc.  
Deere & Co.  
Engineering Products Co.  
FMC Corp., Outdoor Power  
Equip. Div.  
Ford Motor Co., Tractor Div.  
F. D. Kees Mfg. Co.  
Kemp Shredder Co.  
Lindig Mfg. Co.  
MTD Products, Inc.  
Roto-Hoe Co.  
Royer Foundry & Machine Co.  
W-W Grinder

### SNOW THROWER

Allis-Chalmers Corp., Outdoor and  
Leisure Products  
J. I. Case Co., Outdoor Power  
Equip. Div.  
Deere & Co.  
FMC Corp., Outdoor Power  
Equip. Div.  
Ferrari Tractors  
Gravely Corp., Div. Clarke-Gravely  
Hesston Corporation  
International Harvester Co.,  
Consumer Products  
Jacobsen Mfg. Co.  
Lakes Supply Co., Inc.  
Massey-Ferguson, Inc.  
Maxey Mfg. Co., Inc.  
Solo Motors, Inc.  
The Toro Company  
Wheel-Horse Products  
Wisconsin Marine, Inc.  
Yardman, The Leisure Group, Inc.

### SOD CUTTERS

Beck Mfg. Co.  
Big Brute Turf Cut  
Bowie Industries, Inc.  
Brouwer Turf Equipment, Ltd.  
Jacobsen Mfg. Co.  
Princeton Mfg. Co.  
Ryan, OMC-Lincoln

### SOD HARVESTERS

Beck Mfg. Company  
Brouwer Turf Equipment Ltd.  
Nunes Mfg.  
Princeton Mfg. Co.

### SOIL TESTERS

Contree Sales, Inc.  
Howard S. Crane, Inc.  
Harbor Industries, Inc.  
Hydroponic Chemical Co., Inc.  
Soilmoisture Equipment Corp.  
Sudbury Laboratory, Inc.

### SPADE, TREE (Also See Tree Movers)

CareTree Systems  
Vermeer Mfg. Co.

### SPIKERS

Hahn, Inc.  
Jacobsen Mfg. Co.  
Power Spike Mfg. Co.  
Ryan, OMC-Lincoln  
Smithco, Inc.

### SPRAY BOOMS

Amchem Products, Inc.  
The Broyhill Co.  
Century Engineering Corp.  
Contree Sales, Inc.  
Red Ewald, Inc.  
FMC Corp., Ag. Machinery Div.  
Friend Mfg. Corp.  
H. D. Hudson Mfg. Co.  
L. L. Larson Machine, Inc.  
F. E. Myers & Bro. Co.  
Papec Machine Co.  
Root-Lowell Corp.  
Walsh Manufacturing Co.

### SPRAY GUNS

Bar-Way Mfg. Co.  
The Broyhill Co.  
Century Engineering Corp.  
Contree Sales, Inc.  
Delavan Mfg. Co.  
FMC Corp., Ag. Machinery Div.  
Foamspray Chemicals, Inc.  
Friend Mfg. Corp.  
W. L. Hamilton Co.  
H. D. Hudson Mfg. Co.  
L. L. Larson Machine, Inc.  
Melnor Industries, Inc.  
F. E. Myers & Bro. Co.  
Root-Lowell Corp.  
Spraying Systems Co.  
Walsh Manufacturing Co.

### SPRAY NOZZLES, COMPLETE

Amchem Products, Inc.  
Bete Fog Nozzle, Inc.  
The Broyhill Co.

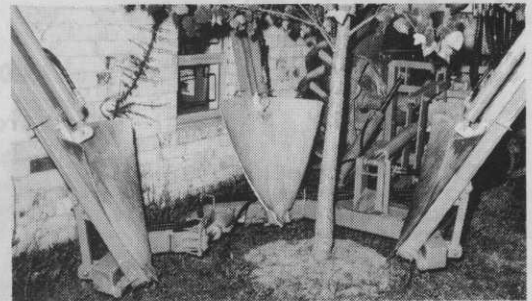
## NEW SHORT-FRAME

# CARETREE TRANSPLANTER

IMPROVED - MANEUVERABILITY



- ACCESS
- VISIBILITY
- BALANCE
- SPEED



FOR CLOSE-SPACED NURSERY  
AND LANDSCAPING OPERATIONS

## CARETREE SYSTEMS

BOX 347, WORTHINGTON, OHIO 43085

Tel. (614) 846-2665

Buffalo Turbine Equipment Co.  
 Century Engineering Corp.  
 Contree Sales, Inc.  
 Delavan Mfg. Co.  
 Foamspray Chemicals, Inc.  
 Friend Mfg. Corp.  
 W. L. Hamilton Co.  
 H. D. Hudson Mfg. Co.  
 L. L. Larson Machine, Inc.  
 Melnor Industries  
 F. E. Myers & Bro. Co.  
 Papec Machine Co.  
 Root-Lowell Corp.  
 Spraying Systems Co.  
 Walsh Mfg. Co.

**SPRAY NOZZLES, DISKS**

The Broyhill Co.  
 Century Engineering Corp.  
 Delavan Mfg. Co.  
 Friend Mfg. Corp.  
 L. L. Larson Machine, Inc.  
 F. E. Myers & Bro. Co.  
 Spraying Systems Co.  
 Vandermolen Co.  
 Walsh Mfg. Co.

**SPRAY NOZZLES, WHIRLS**

The Broyhill Co.  
 Century Engineering Corp.  
 Delavan Mfg. Co.  
 Friend Mfg. Corp.  
 L. L. Larson Machine, Inc.  
 F. E. Myers & Bro. Co.  
 Spraying Systems Co.  
 Walsh Mfg. Co.

**SPRAY-SLEEVE**

Becco Products Co.

**SPRAYER, BIFLUID**

The Broyhill Co.  
 Buffalo Turbine Equip. Co.  
 Red Ewald, Inc.  
 FMC Corp., Ag. Machinery Div.  
 Finn Equipment Co.  
 Friend Mfg. Corp.

**SPRAYERS, BOOM**

Amchem Products, Inc.  
 John Blue Co., Inc.  
 The Broyhill Co.  
 Century Engineering Corp.  
 Contree Sale, Inc.  
 Cushman, OMC-Lincoln  
 Deere & Co.  
 Red Ewald, Inc.  
 FMC Corp., Ag. Machinery Div.  
 Fimco, Inc.  
 Friend Mfg. Corp.  
 Hahn, Inc.  
 H. D. Hudson Mfg. Co.  
 International Harvester Co.  
 L. L. Larson Machine, Inc.  
 F. E. Myers & Bro. Co.  
 Papec Machine Co.  
 Root-Lowell Corp.  
 Walsh Mfg. Co.  
 Waymark

**SPRAYERS, CART OR WHEELBARROW TYPE**

Amchem Products, Inc.  
 The Broyhill Co.  
 Buffalo Turbine Ind. Equip. Co.  
 Century Engineering Corp.  
 Chapin, R. E., Mfg. Works, Inc.  
 Deere & Co.  
 Red Ewald, Inc.

FMC Corp., Ag. Machinery Div.  
 Fimco, Inc.  
 Friend Mfg. Co.  
 H. D. Hudson Mfg. Co.  
 L. L. Larson Machine, Inc.  
 F. E. Myers & Bro. Co.  
 Root-Lowell Corp.  
 Solo Motors, Inc.

**SPRAYERS, COMPLETE POWER UNIT (Also See Pumps)**

Joh ezlue Co., Inc.  
 Bowie Industries, Inc.  
 The Broyhill Co.  
 Buffalo Turbine Ag. Equip. Co.  
 Century Engineering Corp.  
 R. E. Chapin Mfg. Works, Inc.  
 Contree Sales, Inc.  
 Cushman, OMC-Lincoln  
 Deere & Co.  
 Echo Chain Saw Div., Kioritz Corp. of America  
 Edwards Mfg. Co.  
 Red Ewald, Inc.  
 FMC Corp., Ag. Machinery Div.  
 Ferrari Tractors  
 Fimco, Inc.  
 Friend Mfg. Corp.  
 Hub States Corporation  
 H. D. Hudson Mfg. Co.  
 Hydro Turf  
 Hypro Div., Lear Siegler, Inc.  
 L. L. Larson Machine, Inc.  
 Lawn Medic, Inc.  
 Leigh Products, Inc.  
 Lockwood Corporation  
 London Fog Company  
 F. E. Myers & Bro. Co.  
 Parco Products Co.  
 Public Health Equip. & Supply Co.  
 Robco, Inc.  
 Root-Lowell Corporation  
 Smith & Co., Inc. D. B.  
 Smithco, Inc.  
 Solo Motors, Inc.  
 Spray Baby, Inc.  
 Tradewinds, Inc.  
 Tree Ject Company  
 The Vandermolen Co.  
 Walsh Mfg. Co.  
 Waymark  
 Wayne Engineering Corp.

**SPRAYERS, COMPRESSED AIR**

R. E. Chapin Mfg. Works, Inc.  
 Curtis-Dyna Products Corp.  
 Red Ewald, Inc.  
 H. D. Hudson Mfg. Co.  
 L. L. Larson Machine, Inc.  
 Parco Products Co.  
 Public Health Equip. & Supply Co.  
 Root-Lowell Corp.

**SPRAYERS, HAND**

Bartlett Mfg. Co.  
 Broyhill Co.  
 Buffalo Turbine Ag. Equip. Co.  
 Century Engineering  
 R. E. Chapin Mfg. Works, Inc.  
 Contree Sales, Inc.  
 Deere & Co.  
 Friend Mfg. Co.  
 H. D. Hudson Mfg. Co.  
 L. L. Larson Machine, Inc.  
 Leigh Products, Inc.  
 Melnor Industries, Inc.  
 Parco Products Co.  
 Root-Lowell Corp.  
 Solo Motors, Inc.  
 Tradewinds, Inc.  
 The Vandermolen Co.  
 Walsh Mfg. Co.

**IT'S A FACT...**

**OVER A MILLION EARTHWORMS CAN INHABIT AN ACRE OF SOIL... DARWIN ESTIMATED THAT IN ONE ACRE, UP TO 10 TONS OF SOIL PASSES THROUGH THE BODIES OF EARTHWORMS EACH YEAR.**



**MOST CULTIVATED LAND** in humid areas of the U.S. WILL ERODE AT AN AVERAGE OF 1 INCH OR MORE PER CENTURY.

**NOTHING CAN MATCH terra TACK**



**...AND THAT'S A FACT!** Terra Tack as a spray helps control soil erosion.

- **TERRA TACK HELPS PREVENT EROSION** WHEN USED AS AN OVERSPRAY BY HOLDING STRAW OR HAY IN PLACE.
- **TERRA TACK, IN A SLURRY OF SEED, FERTILIZER, AND FIBER, FORMS AN ADHESIVE TO HELP PREVENT EROSION.**
- **TERRA TACK'S COST?... AMAZINGLY LOW!**



WITH TERRA TACK      WITHOUT TERRA TACK

**Grass Growers**

Box 584, Plainfield, N. J. 07061 (201) 755-0921



# Quality & Service from Asplundh

Lift trucks, backed by innovative engineering and quality control, assure you of extra years of satisfactory service performance. Both Forestry and General Service bodies are on regular production schedules. LR Series Models come in 40-, 42-, 45- and 50-feet. All booms are fully insulated and operated by a high pressure hydraulic system with controls mounted on the Pylon Mast and in the basket for maximum safety and efficiency. When you invest in one or a fleet of our aerial lift trucks, you are assured of good service from the aerial device and from the people who build it. ASPLUNDH CHIPPER CO., a division of Asplundh Tree Expert Co., 50 E. Hamilton St., Chalfont, Pa. 18914.

**ASPLUNDH**

*The famous Asplundh chipper is available with all our aerial device units if so desired. 12 inch or 16 inch models are in continuous production.*



**COMPLETE THE ATTACHED COUPON FOR MORE INFORMATION ON ASPLUNDH LIFT TRUCKS**

**Asplundh Chipper Co.**  
50 E. Hamilton Street  
Chalfont, Pa. 18914

- Please send specification sheet
- Please contact me, I'm interested

NAME \_\_\_\_\_

COMPANY \_\_\_\_\_

ADDRESS \_\_\_\_\_

Street                      City                      State                      Zip

SIGNED \_\_\_\_\_

TITLE \_\_\_\_\_

For More Details Circle (124) on Reply Card

### SPRAYERS, HOSE END

Amchem Products, Inc.  
Bar-Way Mfg. Company  
Broyhill Co.  
Century Engineering Corp.  
R. E. Chapin Mfg. Works, Inc.  
FMC Corp., Ag. Machinery Div.  
Friend Mfg. Co.  
Hub States Corporation  
H. D. Hudson Mfg. Co.  
L. L. Larson Machine, Inc.  
Leigh Products, Inc.  
Melnor Industries, Inc.  
F. E. Myers & Bro. Co.  
Tree Ject Company  
Walsh Mfg. Co.  
Wayne Engineering Corp.

### SPRAYERS, KNAPSACK

Bartlett Mfg. Co.  
Buffalo Turbine Ag. Equip. Co.  
R. E. Chapin Mfg. Works, Inc.  
Echo Chain Saw Div., Kioritz Corp.  
of America  
Friend Mfg. Co.  
H. D. Hudson Mfg. Co.  
Parco Products Co.  
Public Health Equip. & Supply Co.  
Robco, Inc.  
Root-Lowell Corp.  
Solo Motors, Inc.  
Stihl American, Inc.  
Tradewinds, Inc.  
Vandermolen Co.

### SPREADERS, DISC-TYPE

L. L. Larson Machine, Inc.  
The Vandermolen Co.  
Waymark

### SPREADERS, HOPPER-TYPE

Arctic Mizer  
Avco Ezee Flow Div.  
John Blue Co.  
Cushman, OMC-Lincoln  
Deere & Co.  
Ford Tractor Operations,  
North America  
Gandy Co.



**Regal Chemical bags it!**

**NITROFORM\***  
organic nitrogen



The nitrogen that pampers delicate turf. Feeds slowly instead of causing surges of growth that can cause stress.

Turf and Horticultural Products, Synthetics Dept.  
Wilmington, Delaware 19899

\*Registered trademark of Hercules Incorporated. STH74-22

For More Details Circle (142) on Reply Card

Great Lakes Chemical Div.  
Herd Seeder Co., Inc.  
Highway Equipment Co.  
International Harvester Co.  
F. D. Kees Mfg. Co.  
L. L. Larson Machine, Inc.  
Lely Corp.  
Ryan, OMC-Lincoln  
Simplex Mfg. Co.  
Swenson Spreader & MFG. Co.  
TCI, Inc.  
Vandermolen Corp.  
Vicon Farm Machinery, Inc.  
Willmar Mfg. Co.

### SPREADER, LIQUID

Amchem Products, Inc.  
TCI, Inc.

### SPRIGGERS

Beck Mfg. Co.  
Bermuda King Co.  
Bowie Machine Works

### SPRINKLERS (See Irrigation)

**STENCILS, MARKING**  
Fox Valley Marking Systems  
M-B Company

### STONE PICKER (Also See Rock Picker)

Armor Metal Products  
William Bergman Company  
Bridgeport Imple. Works, Inc.  
Lockwood Corp.

### STRAINERS

Hypro Division, Lear Siegler, Inc.

### STRAINERS, SUCTION

Bar-Way Mfg. Co.

### STUMP CUTTER/REMOVER

Arps Corp.  
FMC Corp., Sweeper Div.  
Hesston Corp., Lawn Equipment  
Div.  
International Harvester Co.  
Karl Kuemmerling, Inc.  
Levco Mfg., Inc.  
Olathe Mfg., Inc.  
Valley Products Corp.  
Vermeer Mfg. Co.

### SWEEPERS, LAWN (Also See Broom, Vacuum)

Billy Goat Industries, Inc.  
BlueBird International, Inc.  
Clark Div., Clarke-Gravely Corp.  
Deere & Co.  
FMC Corp., Sweeper Div.  
International Harvester Co.  
Jacobsen Mfg. Co.  
M-B Company  
Mars Industries, Inc.  
Mathews Company  
Melroe Mfg. Co.  
Mid-State Metal Casters & Mfg. Co.  
Nunes Mfg.  
Parker Sweeper Co.  
Ryan, OMC-Lincoln  
Sweepster, Jenkins Equip. Co.  
Tennant Maintenance Systems  
The Toro Company  
Turf Vac Corp.  
Wheel Horse Products, Inc.

### TAILGATES, LIFTING

Adventure Line Mfg. Co.  
S & H Industries, Inc.

### TANKS, SPRAY

John Blue Co.  
The Broyhill Co.  
Century Engineering Corp.  
Contree Sales  
Edwards Mfg. Co.  
Red Ewald, Inc.  
FMC Corp., Ag. Machinery Div.  
Fibre Glass Products  
Friend Mfg. Corp.  
Hemco Corporation  
H. D. Hudson Mfg. Co.  
Inject-O-Meter Mfg. Co.  
L. L. Larson Machine, Inc.  
Leigh Products, Inc.  
F. E. Myers & Bro. Co.  
Papec Machine Co.  
Raven Industries  
Root-Lowell Corporation  
Walsh Mfg. Co.

### THATCHERS (See Mowers, Vertical)

Arctic Mizer  
Arps Corporation  
BlueBird International, Inc.  
E-Z Rake, Inc.  
Giant-Vac Mfg., Inc.  
Johnson Hydraulic Equip.,  
Div. Arps Corp.  
F. D. Kees Mfg. Co.  
Parker Sweeper Company  
Ryan, OMC-Lincoln  
Swenson Spreader & Mfg. Co.  
Triumph Machinery Co.

### TILLERS

Allis-Chalmers  
Ariens Co.  
Auto Hoe, Inc.  
J. I. Case, Outdoor Power  
Equip. Div.  
Conaway, Inc.  
Contree Sales, Inc.  
Deere & Co.  
Engineering Products Co.  
FMC Corp., Ag. Machinery Div.  
FMC Corp., Outdoor Power  
Equip. Div.  
FMC Corp., Side-Winder  
Ferrari Tractors  
Ford Motor Co., Tractor Div.  
Gravely Corp., Div. Clarke-Gravely  
Howard Rotavator Co., Inc.  
International Harvester Co.  
Jacobsen Mfg. Co.  
Lakes Supply Co., Inc.  
Lely Corp.  
Massey-Ferguson, Inc.  
MTD Products, Inc.  
Roseman Mower Corp.  
Roto-Hoe Co.  
Simplicity Mfg. Co.  
Solo Industries, Inc.  
Village Blacksmith  
Wheel-Horse Products  
Yazoo Mfg. Co., Inc.

### TIRES

Dunlop Tire & Rubber Corp.

### TOOLS, HAND, HYDRAULIC, PNEUMATIC

Black & Decker Co.  
Deere & Co.  
Friend Mfg. Corp.  
F. D. Kees Mfg. Co.  
Limb Lopper Co., Inc.  
H. K. Porter, Inc.  
Seymour Smith & Son, Inc.  
Village Blacksmith

### TOOL BOXES, PICKUP (See Chests, Tool)