

Remember the famous old Turf King?

Just like the rest of us Jacobsen Distributors, Al Van Pelt of the Boyd Martin Company in Salt Lake City, Utah has fond memories of the 76" and 84" Turf Kings.

They were workhorse mowers in the turf world. But now they've become a memory with the introduction of the new, improved 1974 models.

First off, they've been completely redesigned. Look at the sharp styling. It's your first hint of all new features that are aimed at making the old leaders the new leaders.

The variable speed drive

has been replaced with a hydrostatic drive that's better. The transport speed has been increased to over 8 MPH.

The old handle bars are gone. You'll find a sleek new steering wheel instead because it makes turning easier and offers more control.

The rope starter has been replaced by recoil starting right from the driver's seat. Speaking of the driver's seat, you'll notice it's now high-backed for firmer support. And it's even more comfortable. The gas tank is bigger for fewer fuel stops.

There are some things that

were too good to change, so we didn't.

The Turf Kings can still cut their way through 30 acres in a day. With beautiful results. The mowers are fully articulated to follow the dips and slopes of uneven ground.

And the constant speed reels put a consistently fine and smooth finish to any turf.

You'd better talk to your Jacobsen Distributor about these new three-reelers. A simple demonstration will make you forget all about any second best equipment.

Even our old Turf Kings.

Your Jacobsen Distributors.

Before we sell it, we buy it.



For the name of the distributor near you write: Jacobsen Turf Distributor Directory, 1721 Packard Avenue, Racine, Wisconsin 53403.

For More Details Circle (147) on Reply Card



Dacthal® drives 20 annual weeds off the course with one easy swing.

One application early in the spring. That's all it takes. Dacthal preemergence herbicide prevents 20 annual weeds from sprouting all season long. Problem weeds like carpetweed, chickweed, purslane and others. So you can devote time and manpower to more important work.

Dacthal doesn't stop there. It also drives out troublesome crabgrass and *Poa annua*. Hit 'em in the spring. And follow through with Dacthal in late summer for control of *Poa annua* and other late-germinating weeds.

Over the years, Dacthal has proven to be the closest thing to worry-free weed control. It won't harm new grass when used as directed. Won't leach out with frequent waterings. And there's no problem of residue buildup in the soil.

Dacthal degrades, naturally, in one season. Just read and follow label directions.

You can even use Dacthal to keep the weeds out of flowers and shrubs. It's cleared for use on over 120 ornamentals. That's one more beauty of it.

This year, drive out weeds with Dacthal... the all-around favorite preemergence herbicide. Available in wettable powder or granules. Ask your supplier for more information or write: Agricultural Chemicals Division, Diamond Shamrock Chemical Company, 1100 Superior Avenue, Cleveland OH 44114.

**TOTAL
TURF
CARE**



**Diamond Shamrock
Chemical Company**

A UNIT OF DIAMOND SHAMROCK CORPORATION

For More Details Circle (111) on Reply Card

WEEDS TREES and TURF®

May 1974, Vol. 13, No. 5

THE COVER—Many services provided by a tree care firm require close contact with the tree. The best way to get close to a tree is to climb it. Here, Larry Holkenborg, Sandusky, Ohio, climbs a walnut tree with the assistance of a couple of his employees.



Editor
Donald D. Miller

Assistant Editor
Roger E. Yount

President
Hugh Chronister

Publisher
Arthur V. Edwards

Director of Circulation
D.D. Langley

ADVERTISING SERVICES

Advertising Production
Darrell Gilbert
9800 Detroit Avenue
Cleveland, Ohio 44102
216+651-5500

ADVERTISING SALES OFFICES

HEADQUARTERS
Cleveland, Ohio 44102
9800 Detroit Avenue
216-651-5500
Extension 27

New York, N.Y. 10017
757 Third Avenue
212-421-1350
Russell B. Bandy

WEEDS TREES and TURF is published monthly by The Harvest Publishing Company, a subsidiary of Harcourt Brace Jovanovich, Inc. Executive, editorial offices, 9800 Detroit Ave., Cleveland, Ohio 44102. Phone 216-651-5500.

TORRANCE RECOVERS From Pine Tip Moth — Residents of Torrance, Calif., become aware of the beauty and importance of their street-side trees when an infestation of pine tip moth threatens the trees' health. Robert Schrauben, city tree supervisor, works to rid the community of this pest **13**

DED CONTROLS: WILL SYSTEMICS WORK? — Richard Campana takes an historic look at Dutch Elm disease and reviews the role of the fungicide benomyl in its control **16**

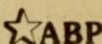

BUCKET RESCUE — A real "how-to" article on the basics of single-man aerial lift rescue. Robert Jones, of Commonwealth Edison Co., provides the illustrations and words for highly interesting reading **21**

SHADE TREES FOR CITIES — Community and urban forestry are here to stay. A couple of pros outline steps for developing a forestry program that combines beauty with utility **26**

JOB PERFORMANCE FROM YOUR EMPLOYEES — Competent supervision, authority, peer relationships, attitudes, etc. They're all part of the psychology of effectively managing your workers. Wallace Mitcheltree takes an objective look at the roles and relationships of the employer and his employees **34**

Editorial	6	Industry People on the Move	55
Letters to the Editor	10	Insect Report	59
Government News/Business	32	New Products	66
Green Industry Newsmakers	44	Advertisers Index	74
Sod Industry Section	48	Classifieds	75
Meeting Dates	52	Trimnings	76

Copyright© 1974 by The Harvest Publishing Company

Member, American Business Press, Business Publications Audit  

Single Copy Price: \$1.00 for current and all back issues. Foreign \$1.50. Subscription Rates: WEEDS TREES AND TURF is mailed free, within the U.S. and possessions and Canada, to qualified persons engaged in the vegetation care industry and related fields in controlled circulation categories. Non-qualified subscriptions in the U.S. and Canada are \$10.00 per year; other countries, \$12.00 per year. Controlled circulation postage paid at Fostia, Ohio 44830.

Quality & Service from Asplundh

Lift trucks, backed by innovative engineering and quality control, assure you of extra years of satisfactory service performance. Both Forestry and General Service bodies are on regular production schedules. LR Series Models come in 40-, 42-, 45- and 50-feet. All booms are fully insulated and operated by a high pressure hydraulic system with controls mounted on the Pylon Mast and in the basket for maximum safety and efficiency. When you invest in one or a fleet of our aerial lift trucks, you are assured of good service from the aerial device and from the people who build it. ASPLUNDH CHIPPER CO., a division of Asplundh Tree Expert Co., 50 E. Hamilton St., Chalfont, Pa. 18914.

ASPLUNDH

The famous Asplundh chipper is available with all our aerial device units if so desired. 12 inch or 16 inch models are in continuous production.



COMPLETE THE ATTACHED COUPON FOR MORE INFORMATION ON ASPLUNDH LIFT TRUCKS

Asplundh Chipper Co.
50 E. Hamilton Street
Chalfont, Pa. 18914

- Please send specification sheet
 Please contact me, I'm interested

NAME _____

COMPANY _____

ADDRESS _____
Street City State Zip

SIGNED _____

TITLE _____

For More Details Circle (101) on Reply Card

In a quiet sort of way, we signaled the Green Industry in December 1972 that noise control and abatement would be under increasing government scrutiny in the months ahead. Excessive noise levels are being charged against poor job performance, lack of incentive, and hearing disabilities both temporary and permanent. Congress in an effort to right the wrong has turned the matter over to the Occupational Safety and Health Administration.

Most people in our type of business have little appreciation of what constitutes excessive noise levels. We know that a chipper operating at full throttle produces quite a whine. Or a chain saw buzzing through a tree limb can put a temporary ring in the ears. But, even though hearing may be temporarily impaired, within a few hours we can hear adequately.

Not so, says the government. And to make their point stick, they've come up with charts, diagrams, graphs and other supporting data. One of the charts with which Green Industry businesses will undoubtedly become familiar is Table G-16 — Permissible Noise Exposure. Simply stated, the chart limits workers to a maximum 90 decibels of sound in an 8 hour day.

More on this chart and the impact of noise control can be found in the article by Robert R. Herder, vice

president, Asplundh Tree Expert Co. in this issue.

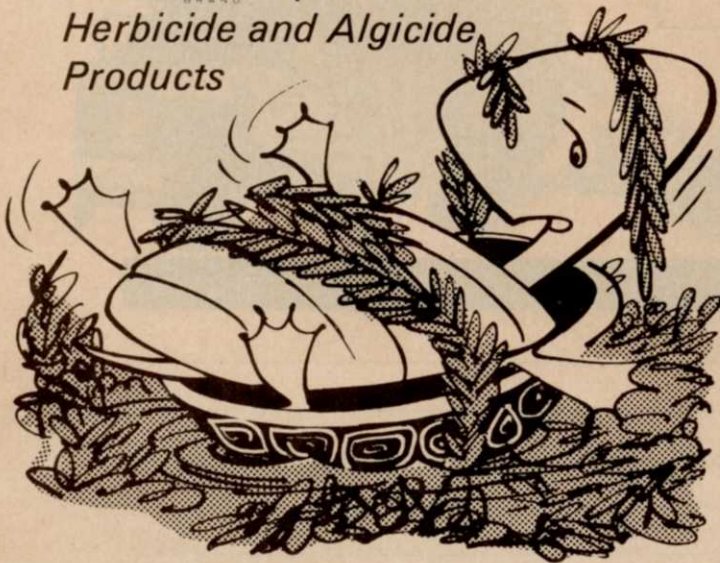
The noise issue is particularly challenging to manufacturers of noise producing equipment. Several leading manufacturers have reported producing equipment whose engines could be muffled well below the noise level, but whose chain or cutting mechanism remained above the acceptable tolerance. Further, just because a piece of equipment meets the noise requirements, doesn't mean that it will always be this way. Noise exposures have been made on new equipment operating under ideal conditions. You can bet your stump cutter that an older chipper or chain saw will produce more noise than a new one. When the OSHA inspector tests your equipment he'll cite you for excessive noise.

If you haven't bothered up to now to provide hearing protection devices for workers, do so immediately. In addition, exercise administrative controls over the labor force. Rotate workers away from noise producing equipment.

Lastly, the place where you can exert a little noise is in Washington. Legislators react first to the loudest squeaking wheel. A few letters, phone calls and thoughts expressed about the Green Industry will assure a substantial footing for your business in the future.

WHEN WEEDS and ALGAE MAKE LIFE MISERABLE...

it's time you found the **Mariner Aquatic** Herbicide and Algicide Products



For information on this new and growing line of 3M aquatic weed and algae control products, write: Plant Care Systems, 3M Company, 3M Center, P.O. Box 33050, St. Paul, Minn. 55101. Or call 305/943-0481.



Northern California Fertilizer bags it!

NITROFORM*
organic nitrogen

The turf nitrogen for nursery stock, too. Gives the same steady sustained growth.

Turf and Horticultural Products, Synthetics Dept. Wilmington, Delaware 19899

*Registered trademark of Hercules Incorporated STH74-17 B



For More Details Circle (155) on Reply Card



Robison's Lawn and Golf bags it!

NITROFORM*
organic nitrogen

The nitrogen that pampers delicate turf. Feeds slowly instead of causing surges of growth that can cause stress.

Turf and Horticultural Products, Synthetics Dept. Wilmington, Delaware 19899

*Registered trademark of Hercules Incorporated STH74-20 B



Get rid of unwanted green growth before it cuts into your profits.

The weed onslaught is just about universal.

An expensive headache.

For utilities, railroads, highway departments, the petroleum industry and industry in general.

But there is a way to con-

trol that costly green tide—with Tandex® herbicide.

It's a urea-carbamate compound that gives outstanding extended control over a range of weeds and grasses.

But it's more than weed control.

It's brush control, too. If you've got to get rid of really tough brush and woody vines, Tandex gets the job done.

You can spray Tandex or apply it in dry granular form.

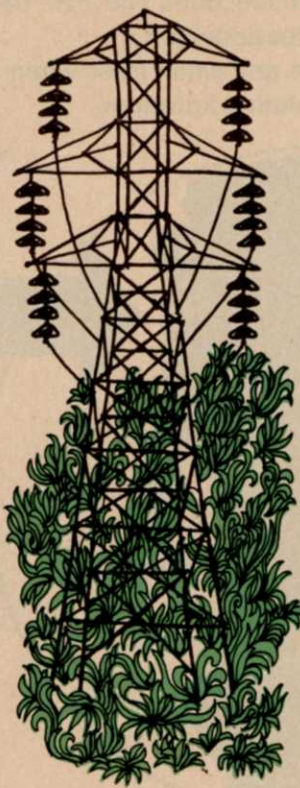
Either way you use it, you'll control that costly green tide.



FOR INDUSTRY



FOR RAILROADS



FOR UTILITIES



FOR ROADS

TANDEX

HERBICIDE

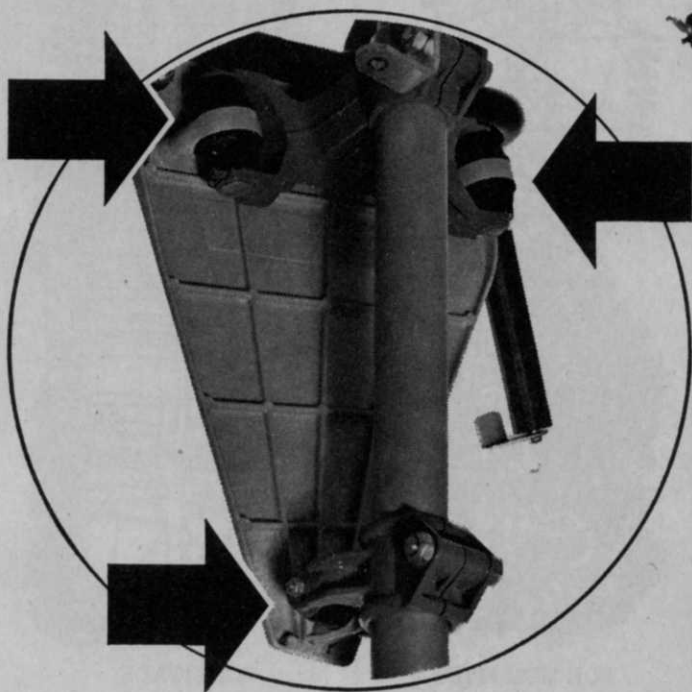
Agricultural Chemical Division
FMC Corporation, Middleport, N.Y. **FMC**

Tandex® is a registered trademark of FMC Corporation

For More Details Circle (116) on Reply Card

STIHL 08 S STIHL FS 08

A perfect pair: The versatile STIHL 08S big power chain saw and the handy new, lightweight STIHL FS - 08 Brush Cutter. The same high performance engine powers them both. The FS - 08 Brush Cutter does a real professional job in tough weeds, stubborn shrubs and small trees when using either the blade with rotating knives or



circular saw. This brush cutter features STIHL's famous AV anti-vibration system that absorbs fatiguing engine vibrations. Lets you cut longer and easier with less effort.

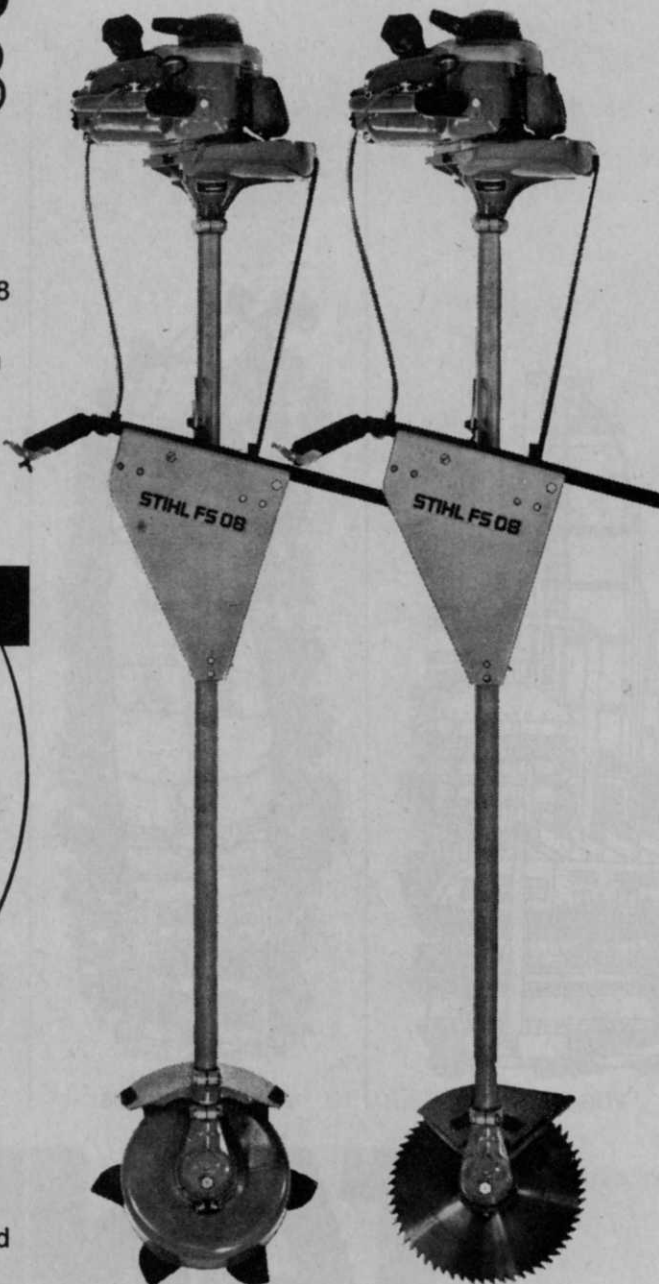
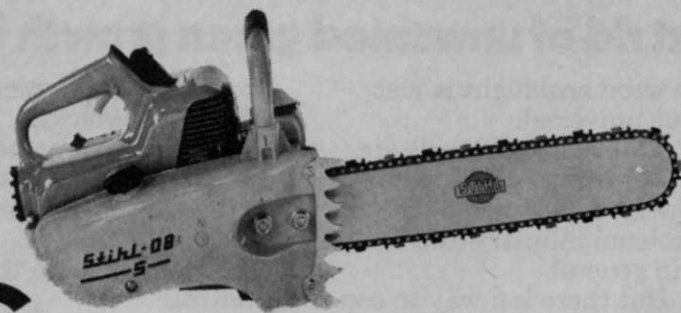
Ask your rental friends or your nearest dealer about STIHL'S better performance, lower maintenance & down-time and proven earning capacity.



STIHL American, Inc.

107 BAUER DRIVE
OAKLAND, NEW JERSEY 07436

For More Details Circle (161) on Reply Card





Choose 43, 50 or 62 horses with John Deere Turf Tractors

Roadside mowing, right-of-way finishing and maintenance, shoulder and median detail—John Deere can match your requirements job-for-tractor. Three horsepower classes answer the great range of work demands, and each engine is provided in gasoline or diesel versions.

In every machine, you get a constant-mesh transmission with park lock and eight speeds forward, four reverse. Inboard, wet-disk, self-adjusting brakes

are also standard, along with inboard planetary final drives that share filtered lubrication with the transmission. Low-profile design for full operator vision and stability, and ROPS are basic, too.

For details on PTO, tread width, and more than 20 other tractor options and equipment choices, see your dealer, listed in the Yellow Pages. He's your source for finance information, too. John Deere, Moline, Illinois.



Scrapers • Bulldozers and Construction Equipment

For More Details Circle (112) on Reply Card

THREE IN ONE

I have read the very excellent article on Page 16 in the March issue of WEEDS TREES AND TURF entitled "Gypsy Moth Threat to the Midwest".

Also on Page 16 you had a brief notation entitled "What is BT?". While you have properly described BT I think you should have mentioned there are currently three (3) product brands registered for commercial use. These are Dipel, Thuricide, and Biotrol XK. Thuricide is a product of Sandoz-Wander, Inc. and

Biotrol is a product of Nutrilite Products, Inc. which is marketed nationally by Thompson-Hayward Chemical Company.

Both Thuricide and Biotrol were in the marketplace prior to the introduction of Dipel. The omission of all of the products in the field might prove confusing to those people we have been communicating with prior to this article. **Bob DeCicco, Manager Marketing Services, Thompson-Hayward Chemical Company.**

NAME REQUESTED

In an article as a sidebar to "Bent

on Better Fairways" in the January, 1974 issue of W.T. & T. it is stated, "Bermudagrass greens constructed according to U.S.G.A. Green Section specifications can easily be converted to bentgrass with a herbicide treatment . . ." Either the writer has his tongue in cheek, or he is referring to a more co-operative type of Bermudagrass than that which has invaded western Oregon from our southern neighbor. If there is a chemical that will do this job, I would like to know it's name.

Thank you for your very fine magazine which in its month to month editions is "right on." **Ken Purkey, Turf Foreman, City of Eugene Park Department, Eugene, Oregon.**

ANSWERED

I believe the reference to chemical inhibition of bermuda in greens converted to bent appeared in material released by Dr. Richard Duble of Texas A & M University.

The DuPont herbicide Tupersan (Siduron) does indeed prevent germination of bermuda seed and encroachment from fairways and aprons, according to a number of experiences (involving conversion of greens to Pennecross) reported on in detail in the Nov. 1971 USGA Greens Section Journal. The cases cited in this report come from tests and practical usage on courses in the Carolinas and Georgia.

Texas A & M has done similar work, I believe, and information might possibly be available from Dr. Duble at the Dept. of Crops & Soils, College Station, Tex. 77543.

I heard about Tupersan 3 or 4 years ago. But I never heard of bermudagrass in Oregon until you relayed this letter. Live and learn . . . **Hal G. Dickey, vice president, Siddall Assoc. Advertising.**

NOXIOUS WEED ACT NOXIOUS

I have been wanting to express my "great disagreement" with the editorial which appeared in the February 1974 issue of the Weeds Trees and Turf magazine in regards to the noxious weed law . . .

In essence, my basic disagreement is not in the fact that we need a noxious weed law and that there are several noxious weeds that should be controlled for the good of humanity, motherhood, childhood, etc., etc., but the manner in which the law is put forth is completely unfair in my opinion. If you will read close you will see that the proposal is to allow the Secretary of Agriculture, in this

(continued on page 12)



The biggest improvement in sod handling since the industry began!

Mr. Brian Bouchard of Kingston Turf Farms, West Kingston, Rhode Island, says, "Beck's Big Roll Sod Harvesting and Laying System is the single, biggest improvement in sod handling methods since the industry started. It allows a landscaper or contractor to install sod quickly and easily and with a quality not ordinarily attained by using pieces."

Kingston's three-man crew will install 30,000 to 40,000 square feet per eight-hour day. And they have attained a single-day high of 52,400 square feet with only three men.

"Our three years' experience with this system indicates that under conditions in New England, we attain a 6% stretch factor in our laying operations. This is an added plus in the sale of sod because the contractor will actually purchase 6% less sod than he needs to cover a particular area."

The Big Roll harvesting operation in the field averages 12,000 square feet per sod hour, cut and loaded, using a crew of four men.

So, no matter where or when you sod, remember the proven Sod-O-Matic from Beck. For more information, write Box 752, Auburn, Alabama 36830.

BECK
MANUFACTURING CO.