



Now here's a mower.

This 9-gang giant will take on the biggest mowing job you have and breeze right through it.

Grady Hassell can tell you about it. He's with Lawn & Turf, Inc. in Conyers, Georgia.

As a Jacobsen Distributor he has all the answers about Jacobsen equipment. Like the huge F20 9-gang mower.

He'll tell you that it cuts a wide 19-foot swath. It has a gargantuan appetite that can cut through 76 acres in one work day. And that's mowing at a realistic pace.

But it's easily tamed for more delicate chores because the operator can raise and lower any of the reels with a fingertip control. Things like median strips can be mowed from the road shoulder with the outboard reels, for example.

Just because it's big doesn't mean it's clumsy. Far from it.

There's a ground-gripping front drive that gives sure traction on grades and sidehills.

And the rear wheel steering means that the reels turn in the same arc as the steering wheels. No skidding, no skipping, no uneven cutting in the turns. And no wheel streaks in the straightaways, either.

If you have big mowing chores ahead of you, ask your Jacobsen Distributor about how the mighty F20 can help you. An actual demonstration ought to raise your eyebrows a couple of notches.

And you might even find yourself saying, "Now here's a mower."

Your Jacobsen Distributors.

Before we sell it, we buy it.

For the name of the distributor near you write: Jacobsen Turf Distributor Directory, 1721 Packard Avenue, Racine, Wisconsin 53403.

For More Details Circle (116) on Reply Card

Get rid of unwanted green growth before it cuts into your profits.

The weed onslaught is just about universal.

An expensive headache.

For utilities, railroads, highway departments, the petroleum industry and industry in general.

But there is a way to con-

trol that costly green tide—with Tandex® herbicide.

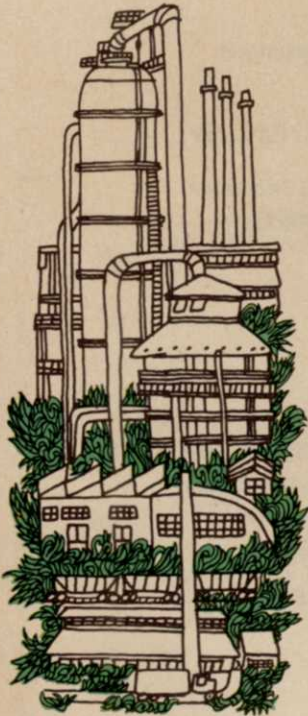
It's a urea-carbamate compound that gives outstanding extended control over a range of weeds and grasses.

But it's more than weed control.

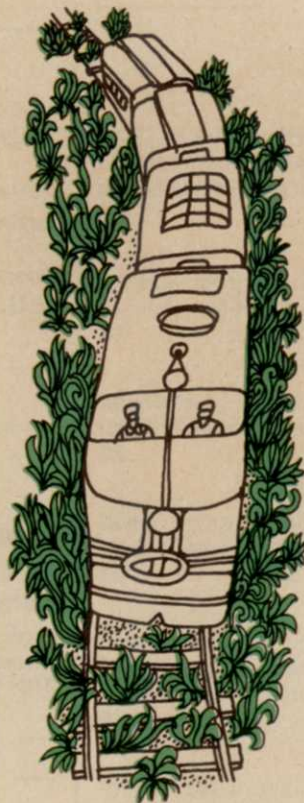
It's brush control, too. If you've got to get rid of really tough brush and woody vines, Tandex gets the job done.

You can spray Tandex or apply it in dry granular form.

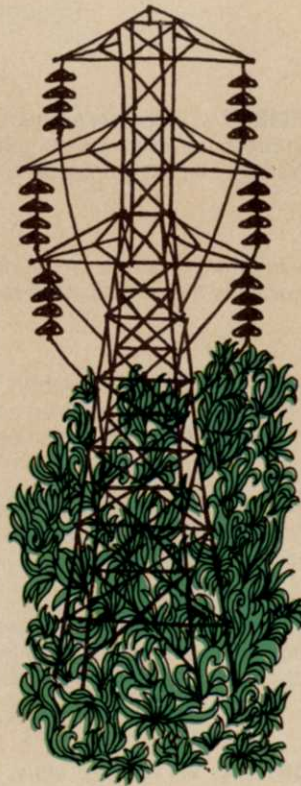
Either way you use it, you'll control that costly green tide.



FOR INDUSTRY



FOR RAILROADS



FOR UTILITIES



FOR ROADS

TANDEX

HERBICIDE

Agricultural Chemical Division
FMC Corporation, Middleport, N.Y. **FMC**

Tandex® is a registered trademark of FMC Corporation

For More Details Circle (144) on Reply Card

WEEDS TREES and TURF®

June 1974, Vol. 13, No. 6

THE COVER—It's early morning in Florida. And Harold Brown of South-eastern Helicopter Service, Fort Pierce, prepares to attack hydrilla by taking on premixed chemical from a nurse truck.



Editor
Donald D. Miller

Assistant Editor
Roger E. Yount

President
Hugh Chronister

Publisher
Arthur V. Edwards

Director of Circulation
D.D. Langley

MORE PLAY, BETTER MANAGEMENT at Baltimore's Sparrows Point Country Club. With gas supplies down and golfing pressure up a modern golf course superintendent cannot afford turf disorders. Alex Watson, club superintendent, is an excellent example of the efficient manager **14**

BONDS and BONDING: A highly informative article on the not-so-complex world of surety bonds. John J. Curtin, Jr., explains the ground rules in this fascinating field of finance **16**

ARE YOUR TREES STARVING TO DEATH?—Dr. Harold Davidson, of Michigan State's Department of Horticulture, describes several problems turf men encounter with trees. His report also includes a review of the latest remedies **20**

HERBICIDES FOR COMMERCIAL SOD: How do they influence the crop? Weed control is a constant problem for sod growers and herbicides a must. A recent study reveals interesting effects of herbicides on sod rooting **22**

NEMATODE CONTROL: Wise Insurance — Year-round play on a municipal golf course in Florida doesn't leave much time for nematode control. What is the answer? John Weseloh explores the role of the custom applicator in golf course nematode control **29**

DAWN ATTACK . . . ON HYDRILLA: WTT cover story. Aquatic weed control specialists continue the battle against one of Florida's waterways most prolific stranglers **38**

Editorial	6	Industry News and Newsmakers	42
Government News/Business	11	New Products	44
Letters to the Editor	12	Industry People on the Move	55
Sod Industry Section	22	Classifieds	57
Meeting Dates	35	Advertisers	57
Insect Report	41	Trimmings	58

ADVERTISING SERVICES

Advertising Production
Darrell Gilbert

9800 Detroit Avenue
Cleveland, Ohio 44102
216+651-5500

ADVERTISING SALES OFFICES

HEADQUARTERS
Cleveland, Ohio 44102
9800 Detroit Avenue
216-651-5500
Extension 27

New York, N.Y. 10017
757 Third Avenue
212-421-1350
Russell B. Bandy

Copyright© 1974 by The Harvest Publishing Company

Member, American Business Press, Business Publications Audit **☆ABP BPA**

Single Copy Price: \$1.00 for current and all back issues. Foreign \$1.50. Subscription Rates: WEEDS TREES AND TURF is mailed free, within the U.S. and possessions and Canada, to qualified persons engaged in the vegetation care industry and related fields in controlled circulation categories. Non-qualified subscriptions in the U.S. and Canada are \$10.00 per year; other countries, \$12.00 per year. Controlled circulation postage paid at Fostoria, Ohio 44830.

WEEDS TREES and TURF is published monthly by The Harvest Publishing Company, a subsidiary of Harcourt Brace Jovanovich, Inc. Executive, editorial offices, 9800 Detroit Ave., Cleveland, Ohio 44102. Phone 216-651-5500.



**Follow through
with Dacamine...
and knock out 76 stubborn
broadleaf weeds.**

Dacamine® turf herbicide kills your toughest broadleaf weeds . . . including perennial undesirables like dandelion, chickweed, poison ivy and knotweed.

Dacamine is powerful. Yet non-volatile. Won't jump up and move across the fairway on a hot day. So there's less danger to your valuable ornamentals.

Dacamine herbicide combines the weed-killing power of an ester with the safety of an amine. A water emulsifiable, postemergence herbicide, it has the unique characteristic to penetrate waxy weed foliage. Then Dacamine moves all the way to the roots. Kills the whole weed, not just the top.

This year, keep broadleaf weeds from blotting your turf. Add Dacamine to your weed control program and you'll kill tough weeds without the danger of volatilization.

Ask your supplier for more information or write: Agricultural Chemicals Division, Diamond Shamrock Chemical Company, 1100 Superior Avenue, Cleveland OH 44114.

BE DIAMOND SURE!



**Diamond Shamrock
Chemical Company**

A UNIT OF DIAMOND SHAMROCK CORPORATION

For More Details Circle (108) on Reply Card

editorial

FORMER Agriculture Secretary Benson used to say that water, land and people are inseparable components of one thing . . . *our welfare*.

Isn't this about the strongest environmental impact statement ever made? And it was delivered a decade or two before "environmental impact" was even coined as a phrase.

In our industry, the elements of water, land and people are parts of an aggregate and we must deal with the relationship as a single entity. Water resources are an excellent example.

This month WEEDS TREES and TURF deals with aspects of aquatic weed control in a special section. And next month there will be heavy emphasis on irrigation.

Irrigation, in our view, is more of a people business than water business. So is aquatic weed control.

People have been responsible for the spread of the aquatic weed industry up through most of the country. And we're not talking about a youngster tossing hydrilla seeds from a car window all the way to Iowa. We're talking about an ex-

plosion in the appreciation of water as a factor of beauty — about climbing real estate values where ponds, lakes and streams are concerned. About the ever-rising demands for recreational water.

We're talking about the critical concern for the protection of potable water supplies all across the country. Legislators and federal attorneys are looking right through microscopes at these concerns. Water quality . . . water beauty! These are terms for the 1970's and 80's. They are *people concepts*.

We agree with the ideas of former Hyacinth Control Society president Robert Gates . . . that environmental improvement is, in effect, good house-keeping. His chief concern two years ago is still ours today; that people must be willing to pay if they would solve environmental problems and preserve a way of life for their children and grandchildren.

For these reasons we see members of the vegetation care industry as stewards in the protection of America's resources . . . proprietors of the knowledge and techniques to preserve life and beauty . . . managers in an industry which provides for *the welfare of people*.



The Green PARK Rabbit symbolizes the fast start and seeding vigor for which PARK variety Kentucky bluegrass is famous. It is the registered trademark of the Northern Minnesota Bluegrass Growers Association . . . the original producers of PARK.

PARK

America's No. 1
certified bluegrass
from its No. 1 producer

More acres of PARK Kentucky bluegrass are grown in the United States each year than any other variety of certified Kentucky bluegrass.

It was the Northern Minnesota Bluegrass Growers Association which first introduced PARK to the commercial market . . . and the association remains the primary supplier of certified PARK seed.

Fact Sheet, prices and other information is available from Twin City Seed Company, exclusive distributor for all PARK variety Kentucky bluegrass grown by the Association.

Write or phone today.

Twin City Seed Company, 500 30th Avenue N.E., Minneapolis, Minn. 55418

The No. 1 name in golf course irrigation...



TORO®



4th hole at Pine Valley

The country's top golf courses use TORO irrigation systems. For a number of very good reasons:

REPEAT CYCLE WATERING—TORO makes it practical. So you automatically get just the right amount of water for your soil and terrain. At the right time. And for the right price.

CUSTOM TAILORING—TORO automatic sprinkling systems are tailored to your specific requirements. No two golf courses are alike...so no two TORO systems are the same.

THE STRONG, SILENT TYPE—TORO sprinkler heads are made of tough CYCOLAC. Gear driven so they're consistent and night-time quiet. Self-contained and sealed so a few grains of sand can't bring things to a grinding halt.

VALVE-IN-HEAD SPRINKLERS—This TORO exclusive eliminates line drain puddles and damaged turf.

VARIABLE SPEED GEAR DRIVES—Nobody but TORO lets your sprinkling patterns overlap without overwatering.

EASY EVERYTHING—Easy servicing...from top to bottom instead of vice versa. Easy installation. Easy conversion...with TORO's big, adaptable assortment of head sizes and variations.

MORE THAN 50 YEARS OF EXPERTISE—TORO's learned a lot about total turf care in 50 years. And all that experience is available to you whenever you need it through our distributor network.

If you've seen a totally TORO golf course lately, we'll let the results speak for themselves. If you haven't, let us tell you more. Write TORO Irrigation Division, Dept. W-674, P.O. Box 489, Riverside, CA 92502.

OSHA and the Tree Man

By Robert Felix, Executive Secretary
National Arborist Association, Inc.

guest editorial

When President Nixon signed the Occupational Safety and Health Act in 1970 no one had any idea what its impact would really be. The Tree Care Industry was as poorly prepared as anyone else. Three years have passed since OSHA became law (April 28, 1971) and I wonder how many tree companies are complying with the law today.

From the time your office door opens in the morning until the lock snaps at night, your personnel, your equipment and your techniques come under the scrutiny of OSHA. In my brief tenure as executive secretary of the National Arborist Association I have had occasion to visit the offices and shops of many tree companies. In some instances the degree of compliance has been substantial, in others feeble.

We are not currently a target indus-

try, but don't let that lead you to believe that you will not be visited by the man from OSHA. A number of tree companies have been visited resulting in citations in some instance in excess of \$2500.00. Don't be a victim of your own disinterest.

Keep in mind that OSHA was intended to provide a safe place to work for every American in private enterprise. By complying with the law and preparing in advance for the OSHA visit that may or may not come, you are improving your own position from a safety standpoint. In the long run you will save money.

Your cost of insurance will decrease as employee safety increases. Granted, initially you will incur some expenses in acquiring the necessary safety devices. But over a long term you will recover this in reduced cost of Workmans Compensation Insurance, reduced lost time due to injuries and increased efficiency. It is not as bad as it seems and if

you do it right it is almost painless.

How does a tree company comply with OSHA? There are numerous publications that interpret the law. Some insurance companies can offer guidance. The American National Standards Institute Z133 Standard has not yet been adopted by OSHA but provides most of the operational safety information. The National Institute of Occupational Safety and Health (NIOSH) in Washington, D.C. can help and if your plant requires considerable rehabilitation to comply. The Small Business Administration is prepared to help with low interest loans.

The National Arborist Association has distributed to its membership an "OSHA Manual" which interprets the law as it applies to the tree care industry. This manual is available to members only and is divided into several categories including management responsibility, plant safety, employee safety, equipment safety, material safety and operational safety.

As new regulations are made by the Occupational Safety and Health Administration they are interpreted and sent to NAA members for insertion in their NAA OSHA Manual.

OSHA might seem like a monster but if properly accepted and applied it will be a tremendous benefit to the employer. It was not designed as a penal code. You can live with it and make a profit from it if you handle it properly.

□



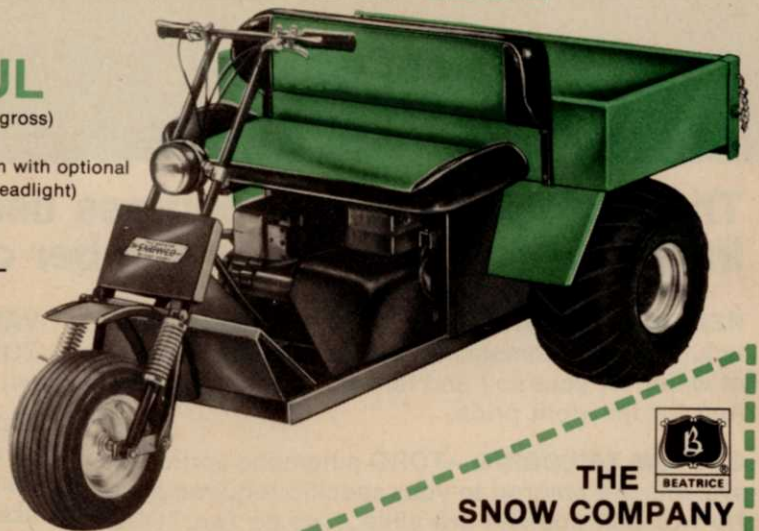
POWER-KART

RIDE
(seat for two)

HAUL
(500 pounds gross)

TOW
(pulls like a mule!)

(Shown with optional
headlight)



Snowco's torque converter drive converts the output of an 8 HP engine into almost unbelievable power for hauling and towing over all terrain.

Wide low pressure tires protect turf from compaction or other damage; and, at the same time, enable the Power-Kart to buck through mud and sand.

Save hundreds of dollars in time plus (as compared with larger vehicles) original cost, maintenance and operating costs.

**SEND COUPON
TODAY!**


**THE
SNOW COMPANY**

Division of Beatrice Foods Co.
Box B, 4386 McKinley, Omaha, Nebr. 68112

Please send illustrated folder on the Power-Kart.

NAME _____

FIRM _____

ADDRESS _____

CITY _____ STATE _____ ZIP _____

Check if dealer

Flymo[®] CUTS BEYOND THE EDGE WITHOUT WHEELS.

Flymo[®] is a revolutionary concept in rotary lawn care machines. Flymo floats along on its own cushion of air at exactly the height you want for healthy turf. The same air cushion that supports Flymo also pulls the grass up into the tempered steel blade for even cutting.

Flymo has no wheels to get bogged down in sand or wet ground. Flymo cuts grass wherever it grows — edges of sand traps, sides of tees, under benches. And goes places wheeled machines can't, like the edges of water hazards.

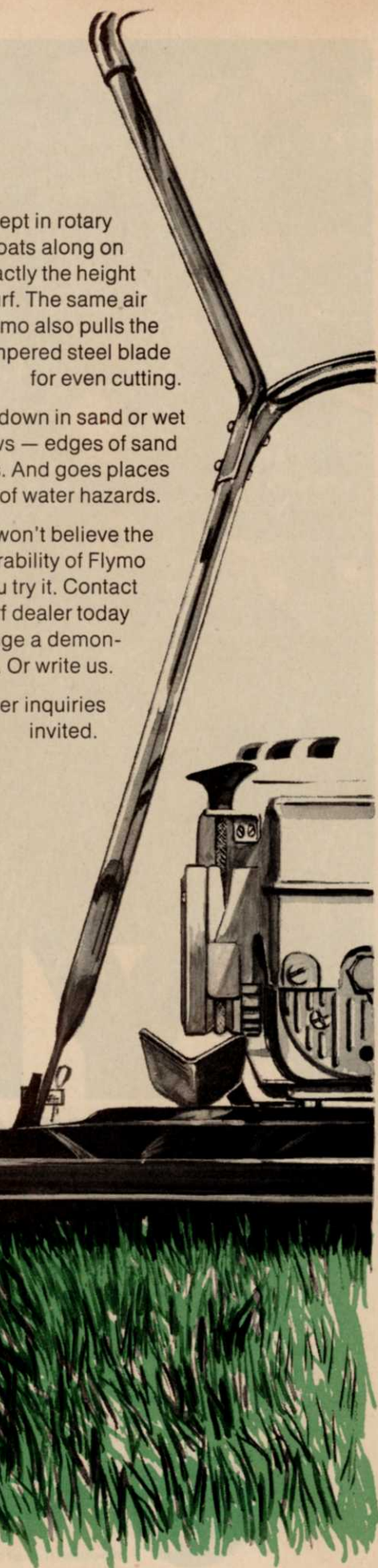
You won't believe the maneuverability of Flymo — until you try it. Contact your turf dealer today to arrange a demonstration. Or write us.

Dealer inquiries invited.



FLYMO PRODUCTS
KELTEC INC.
2310 Industrial Parkway
Elkhart, Indiana 46514

For More Details Circle (111) on Reply Card





a name you can't forget

The first time a turf expert sees Fylking and he gently tests the turf, lifts a swatch and examines the root system, and closely scrutinizes the low-growing, 90-degree side angled leaves, please notice the subtle smile that crosses his face. This is the countenance of the wine connoisseur who has wet his lips with classic vintage, the man who recognizes the truly classic beauty of the Venus de Milo, the research agronomist who has spent years seeking the perfect turf and now views Fylking. Once he has, he wants to know more about this obviously elite Kentucky bluegrass. This man will appreciate knowing Fylking has received overall superior disease-resistance ratings from every major university and institution where tested for leaf spot, stripe smut, stem rust and leaf rust. When he examines the technical brochure he will smile again. Fylking is not perfect, but it's the closest of any. Fylking. It's a name you can't forget.



FYLKING KENTUCKY BLUEGRASS

U.S. Plant Patent No. 2887

Another fine product of Jacklin Seed Company

If you would like our full color technical brochure No. 102 on 0217[®] Fylking Kentucky bluegrass, please ask your Fylking sod or seed distributor or write to Jacklin Seed Co., E. 8803 Sprague Ave., Spokane, WA 99213.

For More Details Circle (115) on Reply Card

**FOR MORE FACTS
USE THE
POSTAGE FREE CARD**

You are invited to use the Reader Service card provided to obtain further information on equipment, materials or supplies appearing in this issue. This card is preaddressed and postage paid.

Your inquiry will be forwarded to the manufacturers in whose products you are interested.

**ART EDWARDS
PUBLISHER**

**FOR MORE FACTS
USE THE
POSTAGE FREE CARD**

You are invited to use the Reader Service card provided to obtain further information on equipment, materials or supplies appearing in this issue. This card is preaddressed and postage paid.

Your inquiry will be forwarded to the manufacturers in whose products you are interested.

**ART EDWARDS
PUBLISHER**