

thousands of workplace hazards have been, and are being, corrected."

The latest available figures show that since its inception in April 1971, OSHA made 138,781 inspections resulting in 91,293 citations alleging 468,702 violations, with proposed penalties totaling \$11.8 million.

Stender identified among the standards most often cited those relating to machine guarding, safe walking and working surfaces, fire exits, proper electrical grounding and guarded floor openings.

He said further that of the 5 percent of the citations contested, 86 percent are "won" by OSHA. For purposes of the study, Stender said, a "win was any case that culminated in the employer's correcting a violation alleged by an OSHA inspector.

"And that's what OSHA is here for," he declared.

A breakdown of the 5 percent of citations that are contested shows:

— that 60 percent or three out of five, are settled before ever going to the independent Occupational Safety and Health Review Commission or the courts, resulting in abate-

ment by employers of the hazards alleged as the basis of violations.

— that of the 40 percent that reach the Review Commission, the employer is ordered to correct the violation in two out of three cases.

"That net effect is that almost all hazards discovered by OSHA inspectors are corrected," Stender emphasized, adding that "in the few instances where OSHA cannot require correction of hazards we have strong reason to believe that conscientious employers do take steps to at least improve the conditions causing the hazard."

Reclaiming Course Offered

A new program designed to train technicians in land rehabilitation practices is being initiated by Colorado Mountain College beginning September, 1974. The program, intended to upgrade or totally train, gives its graduates two years of classes and practical field experience.

For additional information, contact: Land Rehabilitation Program, Colorado Mountain College, Leadville, Colo. 80461.

On-the-spot Citations To be Issued by OSHA

Occupational Safety and Health Administration (OSHA) compliance officers will begin issuing on-the-spot citations under certain circumstances.

John H. Stender, who heads OSHA, said he has issued instructions that are "clear and specific enough to preclude possible abuse of authority."

He said his program directive to field personnel is intended to "expedite citations for many inspections, assuring that protection is offered to employees in the shortest possible time."

Inspectors must confer with their area director before issuing citations, Stender said, and under no circumstances is any inspector authorized to propose on-the-spot penalties. These will be proposed later by the area director.

Previously, all citations have been prepared by the OSHA area director away from the workplace. Stender said the new procedure will "streamline" inspection activities, although there will be certain cir-

Take the guesswork out of turf insect control

Diagnostic Aid from **TUCO**

Many turf insect larvae are night feeders, so the first evidence of their activity frequently is damaged turf. Diagnostic Aid, applied to turf as directed, causes insects to emerge to the surface within 10 minutes. They can be identified and counted to determine the level of infestation and whether an insecticide should be applied. It also can be used after insecticide application to measure the control obtained.

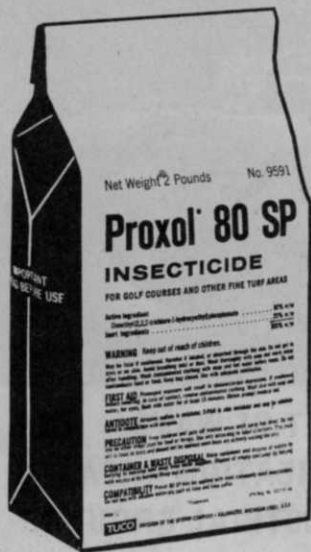


Proxol* 80 SP Insecticide from **TUCO**

Proxol is the one insecticide developed especially for use on fine turf and ornamentals. Sod webworms and cutworms are two major groups of turf insects controlled by Proxol. It is estimated that each sod webworm larva can chew up 20 square inches of turf in its average life span of 20 to 40 days; the cutworm larva can devour up to 36 square inches. With 300 to 500 larvae generated from each adult in a period of 10 to 21 days, it becomes apparent why early detection and control are desirable. Using Diagnostic Aid and Proxol together lets you program insect control.

*Trademark

One bottle of Diagnostic Aid FREE in each case of Proxol 80 SP.



Division of The Upjohn Company, Kalamazoo, Michigan 49001

cumstances where on-the-spot citations may not be issued. These include:

— where a laboratory analysis is needed to determine whether there has been a violation.

— where the advice of others, such as construction or industrial hygiene specialists, is needed prior to determining if a violation exists.

— where the advice of legal staff is needed.

— where there are questions of OSHA's jurisdiction to enforce compliance.

— where reference to documents not available at the inspected establishment is needed to prepare the citation.

Hammen Named Associate Grower

Hammen Brothers Sod Co., Pickett, Wisc., was appointed franchised associate grower of Warren's Sod A-20 and A-34 Kentucky Bluegrasses. Hammen is located in the Appleton-Oshkosh area and will service the state of Wisconsin.

Presently, Warren's have nurseries and associate growers in 14 states and England.

Ramsey Seed Forms New Marketer

Ramsey Seed, Inc., Manteca, Calif., announced the formation of Prillcote Industries, Inc. to market its expanded line of treated seeds in U.S. and Mexico.

In addition to assuming responsibility for Ramsey's Cal-Kote process, the new company obtained exclusive U.S. and Mexican licensed rights to the Prillcote process developed by Coated Seed Ltd., Christchurch, New Zealand.

The licensing arrangement and

the formation of Prillcote hopefully brings further technical improvement into seed coating.

The objective of the process is to provide each seed with a select strain of rhizobia to properly and effectively inoculate the germinating seedling. The seed is coated to increase the life span of the rhizobia until germination takes place. The coating helps protect the seed from damage by sunlight and other elements. It also provides nutrients for the germinating seed.

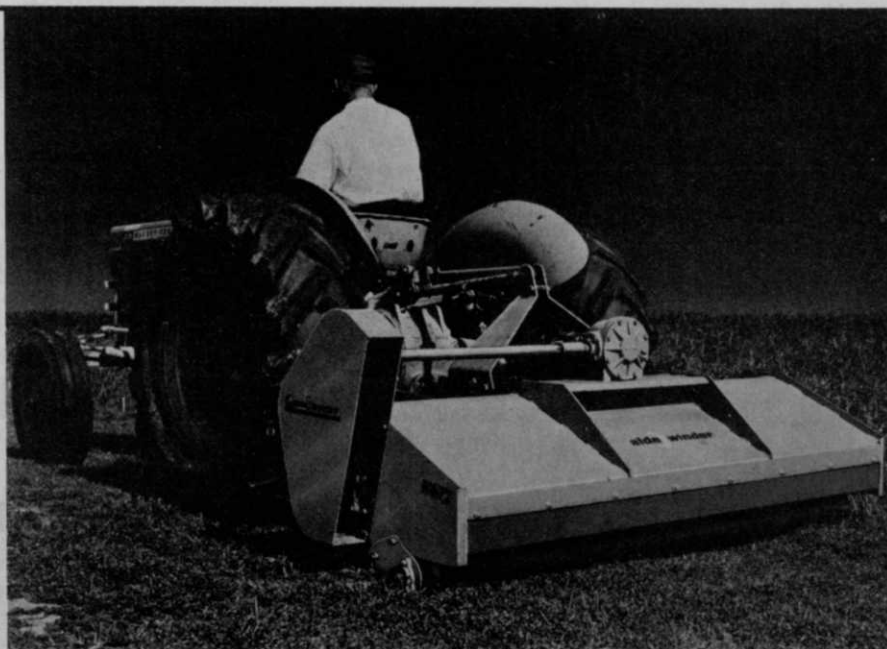


W. H. Ramsey (left), president of Ramsey Seed, Inc., and James Ramsey newly appointed president of Prillcote Industries.

side winder®

Flail Mower FM-72

The improved safety of flail mowing (compared to rotary cutting) plus a carpet-smooth finish in 6-foot wide swath. The new Side-Winder FM-72, designed for safer industrial, commercial and institutional mowing. Heavy steel shield and extra strong rubberized safety curtain give protection for operator and bystanders. New patented blade design thatches grass and weeds for smooth, well-groomed finish. Residue is pulverized for cleaner appearance and faster decomposition. Dyna-balanced blade drum protects bearings and gives a much smoother, quieter, vibrationless operation. Compare the FM-72 with any large capacity mower for a safe design and top performance.



GOLF COURSES **RIGHT-OF-WAYS**
PARKS & CEMETERIES **RECREATION AREAS**
COLLEGES & SCHOOLS **INDUSTRIAL GROUNDS**

FMC

Side-Winder Plant
Agricultural Machinery Division
Box 818 Minden, Louisiana 71055

TELL ME MORE

This page is provided for your convenience. To obtain additional information on new products, trade literature and advertised products in this issue, simply circle the corresponding number on the perforated card below, fill in your name, business address and mail the card. No postage is required.

FOR MORE INFORMATION FILL OUT AND MAIL TODAY!

ADVERTISED PRODUCTS

101	102	103	104	105	106	107	108	109
110	111	112	113	114	115	116	117	118
119	120	121	122	123	124	125	126	127
128	129	130	131	132	133	134	135	136
137	138	139	140	141	142	143	144	145
146	147	148	149	150	151	152	153	154
155	156	157	158	159	160	161	162	163
164	165	166	167	168	169	170	171	172
173	174	175	176	177	178	179	180	181
182	183	184	185	186	187	188	189	190
191	192	193	194	195	196	197	198	199

NEW PRODUCTS

700	701	702	703	704	705	706	707	708
709	710	711	712	713	714	715	716	717
718	719	720	721	722	723	724	725	726
727	728	729	730	731	732	733	734	735
736	737	738	739	740	741	742	743	744

Please send more information on items circled

(Please type or print)

7/74

Name

Position

Company

Street

City

State Zip Code

Signature

Please describe your type of business

DATE

Note Inquiries serviced until September 20, 1974

Use this convenient card if
you wish to receive further
information on products and
services advertised or de-
scribed in this issue.



BUSINESS REPLY MAIL

NO POSTAGE STAMP NECESSARY IF MAILED IN THE UNITED STATES

FIRST CLASS
PERMIT NO. 665
DULUTH, MINNESOTA

postage will be paid by

**WEEDS
TREES
and TURF**

POST OFFICE BOX 6049
DULUTH, MINNESOTA 55806



Pickseed West Expands

Pickseed West, Inc., world-wide producer and marketer of Certified Nugget Kentucky Bluegrass, plans to double the storage area at their Tangent, Oregon facility. The new addition should assist in servicing their customers more quickly and efficiently.

The company specializes in all Pacific Northwest grasses for turf and forage. It exports seed to users around the world as well as producing certified seed of foreign varieties for re-export.

Pickseed is affiliated with Otto Pick and Sons Seeds, Ltd., Richmond Hill, Ontario.



Pickseed West, Inc., plans to double this storage facility at Tangent, Ore.

New Book Stresses Labor

A new publication, *Allocating Resources for Golf Course Maintenance — An Economic Analysis*, by John Van Dam and William W. Wood, Jr., University of California, is now available at \$1.00 per copy.

The booklet illustrates a method of analyzing the management of a golf course, particularly with respect to labor requirements. Budgeting, task specification and labor flow charts are the principal tools utilized.

Single copies are available from the Public Service Office, 90 University Hall, University of California, Berkeley, Calif. 94720. Organizations wishing to purchase in volume should send checks and orders to William Schneeflock, Cooperative Extension, 1422 South 10th St., Richmond, Calif. 94804. A 20 percent discount is applicable to orders of more than 10 copies.

Myers Begins Construction

F. E. Myers & Bro. Co., manufacturer of pumps, water systems, water conditioners and agricultural and golf sprayers, is constructing a new modern, all electric foundry designed to handle castings for brass, iron and malleable production.

Myers president, E. M. Myers, announced that the \$5 million facility is scheduled for completion in late summer, 1975. He said the new plant will have a daily capacity of more than 60 tons of cast iron with the possibility of supplying other corporate needs.

Now, Exhalt800 Prolongs Pesticide Effectiveness; Exhalt4-10 Stops Excessive Moisture Loss.

You need both new Exhalt products to keep your turf and plants in top condition all year long.

Exhalt 800 Sticker-Extender. Even if it rains in an hour, you still get full extender activity, full pesticide effectiveness. Encapsulates and holds pesticides on turf or plant foliage; stops wash-off and weather erosion. Even flexes with leaf growth for longer action! And it reduces pesticide build-up in the soil.

Exhalt 4-10 Anti-Transpirant. Extends transplanting season, even

during active growing weather.

Minimizes effects of summer droughts, high temperatures and drying winds. Keeps grass in better condition! You don't have to agitate it during use, so you save time.

Both are simple to use. Both formulated for economical dilution ratios. Both mix with water—and you need only water to clean equipment. With Exhalt, messy clean-ups become a thing of the past.

Find out more. Write for our literature. Distributor inquiries welcome.



Exhalt

800 Sticker-Extender 4-10 Anti-Transpirant for plants and turf



Kay-Fries Chemicals, Inc.
Crop Protection Division
Stony Point, N.Y. 10980

'Creative' Cure for Chlorosis By WARREN WOLFE

You've got a tree with a chlorosis problem. You've tried ferrous sulfate sprays with erratic results, and you don't like what it does to leaves. You've tried foliar solutions with little success, and you haven't been satisfied with soil treatments.

Iron Medicaps could be the answer to your problem. This new approach lets you feed the iron compound directly into the sap stream of the tree. There's nothing to spray in the air, no chemicals to handle, no holes to drill in the ground. It takes just 10 minutes or less to treat a tree and you can expect results in only 2-4 weeks. More important, one treatment lasts up to three years.

The secret is fast-acting ferric ammonium citrate loaded into unique plastic capsules with slotted sides for slow, timed release. Marketed under the name "MEDICAP," these plastic capsules have been tested at leading experiment stations as well as by hundreds of commercial arborists and nurserymen.

Without exception, Medicaps have solved chlorosis problems. Researchers have found them easy to use and have reported no drawbacks to their use. Moreover, they report the unique bevelled head of the Medicap seals holes effectively and prevents sap from bleeding. Most implantation holes are closed by callus within a year.



John Duling (left) of Duling Tree Experts, Muncie, Ind., discusses Medicaps with author Warren Wolfe, president of Creative Sales, Inc., Fremont, Neb. Duling and other professional arborists use encapsulated soluble chemicals as part of their total tree-care program.

Medicaps are available in different sizes, Mini ($\frac{3}{8}$ inch), Standard ($\frac{1}{2}$ inch), and Super ($1\frac{1}{16}$ inch) for use with trees of varying diameters. The capsules should be inserted into the tree from 2-4 inches apart and at different heights (from 1 to 3 feet above the soil) around the trunk. The ideal pattern would be to follow a spiral line from the 1 foot height up and around the circum-

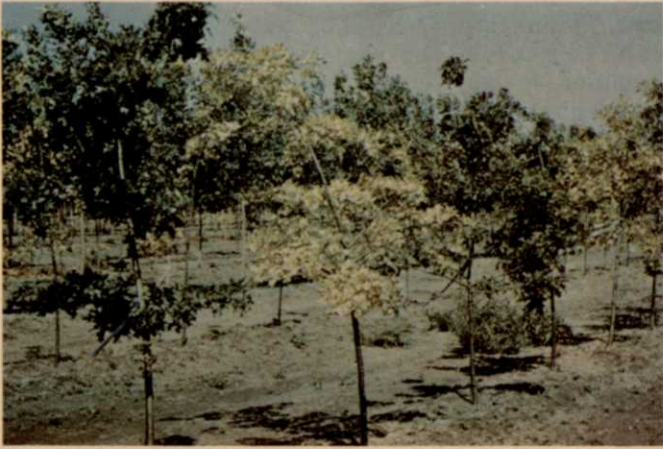
ference of the tree to a point 3 feet high directly above the starting point.

The hose size and depth must be enough to get the capsule entirely into the wood of the tree. When entirely inserted, the head of the capsule should be recessed slightly under the wood (not the bark). Then, the capsule will seal properly and avoid sap leakage.

Dan Neely, plant pathologist for the Illinois Natural History Survey, has been experimenting with iron capsules to control pin oak chlorosis for several years. In an article in the *Journal of Forestry*, Volume 71, Number 6, June, 1973 he reports on the successful use of Medicaps to treat chlorotic pin oaks in commercial nurseries and in several Illinois cities.

In summation of his work, Neely submitted data which shows the color of the tree before treatment and a comparison between MEDICAP treated and untreated (check) trees.

In the April, 1974 issue of *Arborist News*, Neely and D. F. Schoeneweiss reported on the use of iron capsules as well as other methods of controlling chlorosis. They report that "both implantation of dry salts and the soil injection of solutions have corrected iron chlorosis." But, they conclude "Implantation (Medicaps) requires less time and equipment than does soil injection, and is less troublesome."



Dan Neely treated these trees at Mayview Nursery with Medicaps in June '71. This photo was taken 30 days following treatment of trees 1, 3 and 4 (from left).

A close-up of trees 1 and 2 about 14 months after application shows second year effect of treated tree (left) and further decline of the untreated.



This Hinsdale, Ill. tree was treated in late July '72.



A Bald Cypress shows signs of iron chlorosis at time of treatment in June '71.



The same tree, 30 days after treatment, exhibits signs of total recovery.



The same tree in Hinsdale three weeks after treatment.



Medicap 'implants' remain in the tree. No return service call is needed to remove the applicators.



Injection sites normally heal over by tree callous a few months after application.

They recommend using Medicaps on pin oak in April, May or June according to table 1.

Neely and Schoeneweiss were not impressed with the use of foliar sprays and discounted the effect of soil treatments with sulfur and/or aluminum sulfate. Schoeneweiss did obtain good results with liquid iron chelates, soil injected at high rates. However the cost of material and the cost of application are considerably higher than the cost of treating with Medicaps. By conservative estimate, treating a 12 inch DBH tree with soil applied chelate would cost \$20.00 per tree for material alone. Then you have the cost of drilling 160 holes to a depth of 12-15 inches, plus the equipment to inject 200 gallons of solution at a minimum of 150 psi pressure.

By contrast, treating a 12 inch DBH tree with Medicaps, would cost a homeowner only \$8.95 for 10 capsules, plus the time to drill 10 injection holes and press in the cartridge. For a commercial arborist, the cost would be far less.

Elton M. Smith, Extension Specialist for Landscape Horticulture at Ohio State University, reports on Medicaps in his article "Chlorosis of Pin Oak-Encapsulated Iron Most Effective Remedy."

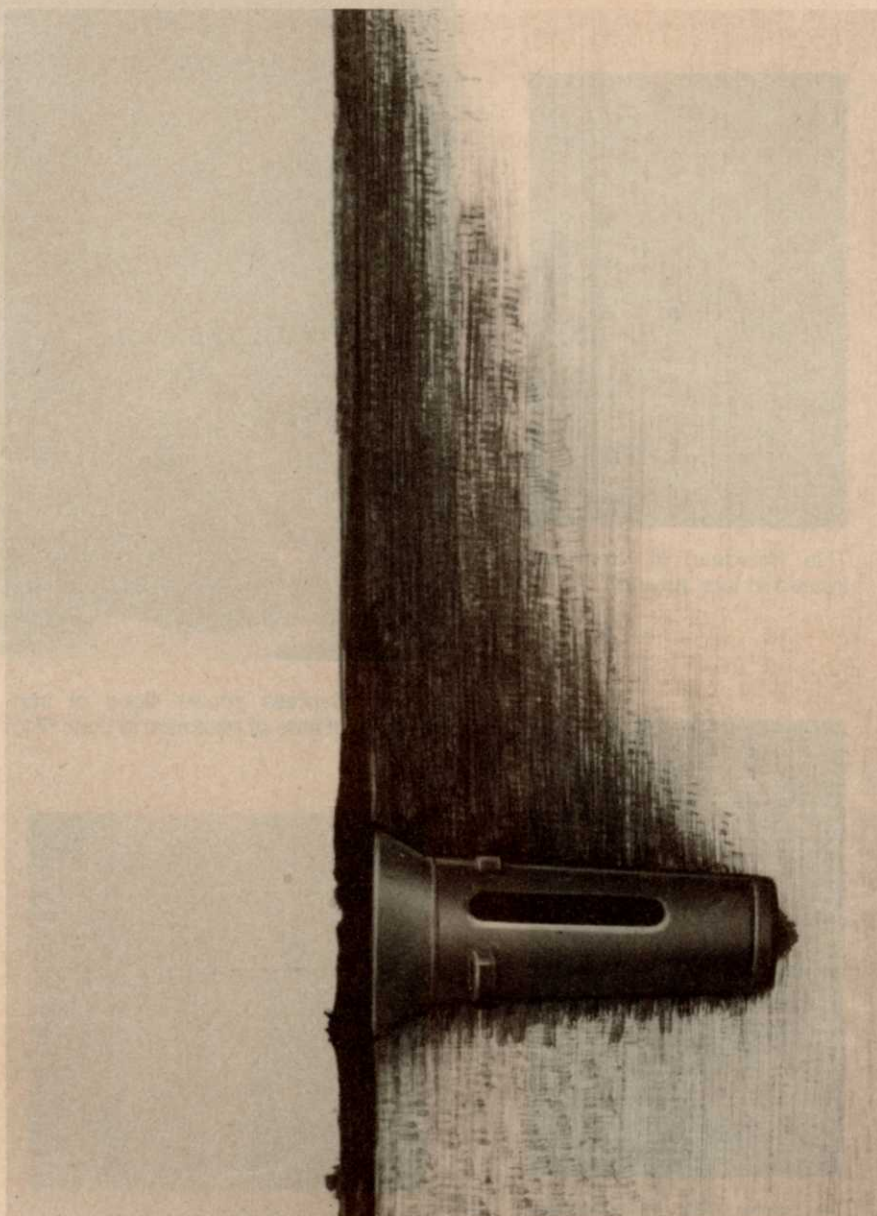
He used iron capsules in comparison studies with foliar spray and soil application of iron chelate, and trunk injections of iron sulfate. In

summing up he reports, "Trunk implantations with capsules (Medicaps) were superior to all three compared treatments on visual observation, were longer lasting and quicker to apply."

Similar reports have been received from research scientists, city foresters, and independent operators over a widespread area. Medicaps are curing iron chlorosis.

According to research evaluations by numerous universities, the capsule injection technique is equally adaptable to systemic pesticides. Recent popularity in tree trunk injection stems from the fact it avoids common public resistance to spraying. Furthermore far less time and equipment is required when compared to foliar sprays or soil injection.

TRUNK DIAMETER (breast height)	MEDICAP SIZE	DISTANCE BETWEEN HOLES
1-4	Mini (3/8")	2
4-12	Std. (1/2")	3
12 and up	Super (11/16")	4



Medicap tree injection cartridges provide easy, economical placement of encapsulated soluble chemical directly into the active sap flow of the tree.

Kerr-McGee bags it!
NITROFORM[®]
 organic nitrogen

The slow-release nitrogen for W.I.N.ning turf... because it has a high percentage of W.I.N. (water insoluble nitrogen). No danger of burning, either.

HERCULES
 INCORPORATED

Turf and Horticultural Products, Synthetics Dept.
 Wilmington, Delaware 19899
 • Registered trademark of Hercules Incorporated. STH74-24B

For More Details Circle (138) on Reply Card

WEEDS TREES and TURF

NEW IMPROVED

HYDOUT®

Works in
moving water

For control of Hydrilla,
Chara and other aquatic
weed and algae in Florida irrigation
and drainage canals, lakes and ponds.

HYDOUT pellets are:

- EASY TO APPLY — by mechanical spreader or by aircraft
- FAST ACTING — even in moving waters
- PROVEN — by growers, ranchers, drainage and water control districts, cities, etc.
- BIODEGRADABLE — with no harmful buildup of residues in water or soils
- ECONOMICAL — particularly when used in a continuing aquatic maintenance-management program

Hydout pellets settle to the bottom of the canal or lake to provide controlled slow release. Tests show that the slow release rate helps reduce fish toxicity and provide longer-lasting control when compared with other liquid formulations.

Hydout's new improved formulation eliminates equipment-clogging dust and fines to provide quick and economical control of aquatic weed and algae.


You can have weed and algae-free water flow to or from your fields and groves, through your irrigation or drainage systems, lakes and ponds—economically—by specifying **HYDOUT**.

When writing, ask for your free copy of the recently published *AGRI-FIELDMAN Guide to Aquatic Weed and Algae Control* research bulletin.



Before using be sure to read and follow directions and precautions on the label of the product

For more information, contact your local
HYDOUT dealer, or write:

 **PENNWALT**

AGCHEM-DECCO DIVISION

P.O. BOX 1470
MONTGOMERY, ALABAMA 36102
(205) 263-0513

Pennwalt is an equal opportunity employer.

HYDOUT — currently registered for use in Florida only.

NEW! AQUAPROBE



Sub-Soil Moisture Tester

AQUAPROBE takes the guesswork out of soil moisture testing. Scientifically measures moisture at depths from 2 to 26 inches. No digging; no fixed point of measurement. Amazingly light-weight, portable and easy to use. Aquaprobe is low in cost, too. Write:

HOWARD S. CRANE, INC.
Oneida, N.Y. 13421

For More Details Circle (108) on Reply Card



Lebanon
bags it!

NITROFORM*
organic nitrogen

The high-quality, economical organic nitrogen that's odorless too.

Turf and Horticultural Products, Synthetics Dept.
Wilmington, Delaware 19899

*Registered trademark of Hercules Incorporated. SH74 13B

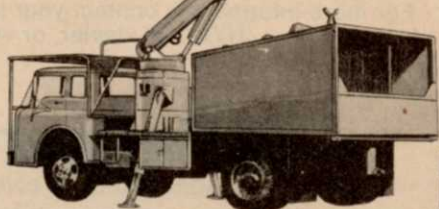


For More Details Circle (141) on Reply Card

HI-RANGER® . . . world leader on line-clearing & tree trim jobs . . . has GOOD NEWS FOR YOU . . .

Now HI-RANGER has added eleven great new improvements . . . more exclusive features . . . to the safest, fastest working personnel towers for many jobs . . . proven over twenty years . . . the most imitated . . . most wanted . . . and most used on overhead work.

HI-RANGER Aerial Towers meet the "American National Standard for Vehicle-Mounted Elevating and Rotating Work Platforms ANSI A92.2-1969," as required by the Williams-Steiger Occupational Safety and Health Act of 1970; Part 1910, Occupational Safety and Health Standards; Section 1910.67; Part 1926, Safety and Health Regulations for Construction; Sections 1926.451 (f), 1926.556, 1926.952 (b), and 1926.955 (e), as applicable.

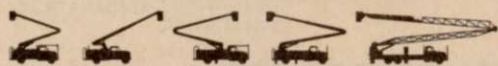


Send for new 4F/5F catalog

HI-RANGER



MOBILE AERIAL TOWERS, INC.



MOBILE AERIAL TOWERS, INC. • Dept. N • 2314 BOWSER AVE. • FORT WAYNE, IND. 46803

meeting dates

Hyacinth Control Society, Inc., Langford Hotel, Winter Park, Fla., July 14-17.

American Sod Producers Association, summer meeting, Sheraton Inn-Northeast, Washington, D.C., (New Carrollton, Md.) July 16-19.

Turfgrass Research and Equipment Field Day, University of Maryland Plant Research Farm, Fairland, Md., Aug. 8.

Ohio Turfgrass Field Day, Ohio State University, Columbus, Ohio, Aug. 8.

American Society for Horticulture Science, 71st annual meeting, and **Canadian Society for Horticulture Science**, 19th annual meeting, University of Guelph, Ont., Aug. 11-17.

International Shade Tree Conference, Golden Anniversary meeting, Atlanta, Ga., Aug. 18-23.

National Hardware Show, 29th annual show, New York Coliseum, New York, N.Y., Aug. 25-29.

Professional Grounds Maintenance Society Conference, annual meeting, Crown Center Hotel, Kansas City, Mo., Sept. 4-6.

International Plant Propagators' Society, Western Region, 15th annual meeting, Mission Bay area, San Diego, Calif., Sept. 4-6.

Northern Michigan Turfgrass Field Day, Michigan State University Experimental area, Sept. 10.

Lawn and Garden Distributors Association Convention, annual meeting, Fairmon-Roosevelt Hotel, New Orleans, La., Sept. 11-12.

Florida Turf-Grass Association, combined conference and show, Curtis Hixson Convention Center and Riverside Hilton, Tampa, Fla., Sept. 16-19.

Midwest Agricultural Chemicals Association, annual meeting, Four Seasons, Lake Ozark, Mo., Sept. 17-19.

International Pesticide Applicators Association, Seattle, Wash., Sept. 18-21.

Southwest Turfgrass Conference, New Mexico State University, Las Cruces, N. Mex., Oct. 10-11.

American Horticultural Society Congress, Washington, D.C., Oct. 10-12.

National Institute of Parks and Grounds Maintenance, fourth annual meeting, Pittsburgh Hilton, Pittsburgh, Pa., Oct. 7-10.

Central Plains Turfgrass Conference, K-State Union, Kansas State University, Manhattan, Kans., Oct. 23-25.

classifieds

When answering ads where box number only is given, please address as follows: Box number, c/o Weeds Trees and Turf, 9800 Detroit Ave., Cleveland, Ohio 44102.

Rates: All classifications 50¢ per word. Box number, \$1. All classified ads must be received by Publisher the 10th of the month preceding publication date and be accompanied by cash or money order covering full payment.

FOR SALE

DOUBLE EDGE sod cutter blades. Will fit any Ryan sod cutter. Works like double edge razor blade. Cuts much more sod per blade. Made to bolt on both ways. \$24.00 plus postage. New automatic sod loaders for direct loading to pallets, trucks or trailers. No workers needed on ground. Both products developed and designed by Hadfield. Write or call Glen Hadfield, 4643 Sherwood, Oxford, Michigan 48051. Phone 313 628-2000.

SOD BLADES for Ryan, Brouwer, Beck. 12" to 18" heavy duty — \$15.95, 24" — \$17.95. Cut-off blades 12", 15", 16", 18" — \$6.00, 20", 24", 26" — \$8.00. All prices F.O.B. factory. Please write for complete literature. Money back guarantee. R & R Products, 3334 E. Milber, Tucson, Arizona 85714. Phone 602 889-3593.

ARPS stump cutter teeth, top quality and best price in U.S.A., D. J. Andrews, Inc., 17 Silver St., Rochester, New York 14611. Call 716 235-1230.

SEEDS

LAWN SEEDS

Wholesale. Full line of quality grasses. Fescues, Ryegrasses and Bluegrass varieties including Fylking, Nugget and Glade.

Write today or call collect for price quotations. (216) 753-2259

OLIGER SEED COMPANY
Box 3765 Akron, Ohio 44314

SOD QUALITY Merion Seed for discriminating growers. Fylking, Delta, Park, Newport, Nugget, Adelphi, Cheri, Glade and Baron bluegrasses as well as fine fescues. Also Manhattan fine leaved rye grass. We will custom mix to your specifications. Michigan State Seed Co., Div. of Vaughan-Jacklin Corp., Grand Ledge, Michigan 48837. Phone No. 517 627-2164.

HELP WANTED

Industry Salesman

We want a man who can work independently and is knowledgeable in the commercial turfgrass industry.

Must have experience and proven sales ability.

30 weeks air travel yearly, balance in office. All weekends at home.

Qualified man can start at \$20,000 yearly. Travel expenses paid.

Send resume in confidence today. We will call you.

Our staff is aware of this ad.

Write WTT, Box 119, 9800 Detroit Ave., Cleveland, Ohio 44102.

to be maintained on the North Shore of Puerto Rico. Must be mature and have the ability to direct 50 people. Excellent salary and fringe benefits. Ability to speak Spanish desirable. Box 120, Weeds Trees and Turf, 9800 Detroit Ave., Cleveland, Ohio 44102.

DISTRIBUTORS for D. J. Andrews, Inc. stump cutter teeth, pockets and bolts. Best wholesale and retail price in U.S.A. Add to this exclusive area, local advertising at our expense, etc., and you have our story. D. J. Andrews, Inc., 17 Silver St., Rochester, N.Y. 14611. Call 716 235-1230, or 716 436-1515.

MISCELLANEOUS

TREE APPRAISALS, Surveys, loss evaluations and expert consultation services. For names of members of the American Society of Consulting Arborists, Inc., throughout the country, contact: Executive Director ASCA, 12 Lakeview Ave., Milltown, New Jersey 08850.

USED EQUIPMENT

FOR SALE: Sprayers: used and new; hydraulic and mist, all makes; Royal 20, 35, and 55 pumps. Used rotomist parts, big discount! Phone 313 665-5338 or 313 994-3110. Write: Ralph McFarland, 209 Pleasant Place, Ann Arbor, Michigan 48103.

1971 HYRANGER 57' working height on 1971 Ford, \$15,000.00; 1969 International Twin Screw with 60BC loader, 22' bed, \$9,000.00; 1968 Ford F700 with 60BC loader, 14' bed, \$7,000.00; 1966 Dodge with 60BC loader, 14' bed, \$5,500.00; Asplundh 12" Chipper, V/8 engine, \$1,800.00; Vermeer 604 log chipper, diesel engine \$13,000.00; Vermeer log splitter, like new, \$1,300.00; Bob Callaway, 5148 North Flora, Kansas City, Mo. 64118. Phone 816 454-2242.

SKY WORKER—57' working height, mounted on 1965 2 1/2 ton Chevy. truck, dual buckets, pony motor, air compressor and holding tank in real good condition. Kirby Tree Care, RR1, Box 36B, Fountain, Colorado 80817. Phone 303 382-7000.

TWO MITTS AND MERRILL chippers, 16 inch, V-8, Ford industrial automatic transmission, good condition. Phone 614 753-3628. Altier and Maccombs, 570 Chestnut St., Nelsonville, Ohio 45764.

TC700 VERMEER TREE MOVER, 1966 Chevy. truck and machine, 15,000 miles, mint condition. Instant Shade Company, 1401 Main, Pine Bluff, Ark. 71601. Phone 501 536-7795.

1967 GMC 7500 single axle truck with John Deere 3415 Kotoboom, \$8000.00. Phone 603 542-5030.

ISTC (from page 16)

"Business management," Prof. Charles H. Ingraham
Panel of the day's speakers

Session IV — Arboriculture Research and Education Academy

Panel discussion on research, extension and educational needs of arborists role, function and activities of the Academy (informal roundtable discussion)

Business discussion, John A. Weldhaas presiding

Evening:
Annual banquet and entertainment

advertisers

Adelphi Kentucky Bluegrass	12
Asplundh Tree Expert Co.	13
Beck Mfg. Co.	38
Bermuda King Co.	50
E. F. Burlingham & Sons	17
Charles Machine Works	29
Cowbell Seeds.....	6
Howard S. Crane, Inc.	48
Deere & Company	7
FMC Corp., Agri. Machinery Div.....	33
FMC Corp., Sidewinder Div.....	42
FMC Corp., Sweeper Div.	20
Golf Course Builders of America.....	32
Grass Growers, Inc.	28
Hercules, Inc.	19, 35, 46, 48, 49
Hydraulic Products Co., Inc.	34
International Spike, Inc.	25
Jacklin Seed Company	9, 14
Jacobsen Mfg.	2nd cover
Kay-Fries Chemical Co.	43
Lofts Pedigreed Seed Co. 4th cover	
Mallinckrodt Chemical Works	5
Mitts & Merrill, Inc.....	37
Mobile Aerial Towers, Inc.	48
Nunes Mfg. Co.	35
Pennwalt Corp.....	32, 47
Rainbird Sprinkler Co.	3rd cover
Rhodia, Inc., Chipman Div.	15, 27
Royer Foundry and Machine Co.	16
Ryan Equipment Co.	26
Safety Test & Equipment Co.	10
Servis Equipment Co.....	40
The Snow Company	31
Tuco Products	3, 41
White Turf Engineering	24



Lawn King bags it!

NITROFORM*
organic nitrogen



The economical nonleaching nitrogen that's great for turf, trees, shrubs, and evergreens, too.

Turf and Horticultural Products, Synthetics Dept.
Wilmington, Delaware 19899
Registered trademark of Hercules Incorporated. STH74-11 B

For More Details Circle (137) on Reply Card

The Big Red Line

bermuda king

The World's First Completely
Automatic Sprig Planters
And Harvesters
All One-Man Operation



**New "Landscape Special"
SPRIG PLANTER**

Ideal for Lawn Planting, Golf Courses, Industrial Landscaping, Estates and Parks. Works in close quarters with small tractor. Mounts on any 3-pt. tractor hookup. For Turf and all Lawn Type Grasses. 10 cu. ft. cap.



New "Fairway Special" Sprig Planter

Designed Especially for Golf Course Fairway Planting

The Fairway Special lays down a carpet of Bermuda sprigs, up to 100 bu. per acre. 36 large planter wheels insert sprigs to desired depth on 2" row spacing. In 2-4-6-8 and 10-ft. widths.

The "King" is the best sprigger for Bermuda, Alisa, Zimmerly, Coast Cross, Pangola and other top-growth root planting.

**New 42" Sprig
Harvester
with
Elevator**

6 Models
to Choose
From:
42", 28", 20"



Designed especially for Custom operators. Digs, loads and cuts to planting length 1000-1200 bu. of clean sprigs per hr. . . up to 2000 bu. when equipped with Side-Loading Elevator.

**New 20" Sprig
Harvester**



The popular new 20" Sprig Harvester digs and loads 400 to 500 bu. of clean sprigs per hr. Up to 600-900 bu. with side loading elevator. Floating PTO Shaft and Shear-Pin protection. Heavy-duty construction.

Inquire Now for Delivery This Season
Manufactured, distributed, serviced by

**Willard Duffy
BERMUDA KING CO.**

Okarche, Okla. 73762 • 405 263-7389

trimmings

Disposing of chemical containers is becoming a problem, say some experts. The National Agricultural Chemical Association suggests the rinse and drain method to help reduce the potential hazards of "empty" pesticide containers. First, the container should be allowed to drain in a vertical position for 30 seconds. Then, the container should be rinsed three times and allowed to drain 30 seconds after each rinse. The rinse should be drained into the sprayer that is being used for application. North Carolina State University specialists emphasize that used pesticide containers aren't safe for reuse for any purpose.

Who says you can't get something for nothing? A revised "Safety and Health Protection on the Job" poster is available free-of-charge from the Department of Labor. The poster, required by law to be posted in workplaces, is a more detailed version of the original one. It summarizes the provisions of the Act in easily understood language enabling both the employer and employee to understand their rights and responsibilities under the law. Posters may be obtained from OSHA regional offices in Atlanta, Boston, Chicago, Dallas, Denver, Kansas City, New York, Philadelphia, San Francisco and Seattle.

Achtung! Experiments conducted at Bavendorf, Germany have shown that certain systemic fungicides are toxic to earthworms. Earthworm activity was reduced significantly in the grass sod of apple orchards in which the trees had been sprayed with either benomyl, thiophanate or thiabendazole. Applications of dilute concentrations of these materials to soil in enclosed containers also produced a significant drop in earthworm activity. Of the three compounds, benomyl produced the greatest effect.

"If you can't plant a flower . . . pluck a weed." The City of Lubbock, Texas and Lubbock Chamber of Commerce have joined forces in a city-wide effort to rid alleys and vacant lots of weeds and rubbish. To

be in violation of the weed ordinance, property must have a profusion of weeds that average 12 inches in height. If a violation exists, a notice will be mailed to the property owner who then will be given 10 days to cleanup.

Hitch hiking gypsy moths will be carried long distances by cars and recreational vehicles this summer. As the weather warms and more campers, fishermen and hikers seek recreational activity in the northeastern states, all stages of the gypsy moth — egg masses, larvae, pupae and adults can cling to vehicles parked in infested areas. Motorists are advised to perform periodical inspections of their vehicle to stop what may be the beginning of a new infestation.

A little more you-all. *Forest Research News* has changed its name. It is now *For The South* instead of *Mid-South*. The magazine is also being sent bi-monthly instead of quarterly.

The Committee of Nine, a top research advisory committee of the U.S.D.A. says the American consumer faces the possibility of certain food and fiber shortages within a few years unless state agricultural pesticide research and label clearance can be accelerated. The nine represent 55 state agricultural research stations in the U.S. The committee called for immediate computerization of pesticide tolerance data records and activities of inter-regional (IR) project IR-4, established in 1963. IR-4, under the direction of Dr. Charles C. Compton, Rutgers University, has developed a data collecting center and services as a clearing house nationally for the state agricultural experiment stations. This research data is used by IR-4 to obtain clearance from EPA for use of many pesticides not otherwise cleared by industry with EPA.

**Equipment & Supplies
Guide**

WTT September Special